

**Antler Energy LLC
Powder Wash Federal 28-3
Location ID: 312968**



Unused equipment



Unused equipment

**Antler Energy LLC
Powder Wash Federal 28-3
Location ID: 312968**



No sign at tank battery



Staining

Antler Energy LLC
Powder Wash Federal 28-3
Location ID: 312968



Staining



Staining

Antler Energy LLC
Powder Wash Federal 28-3
Location ID: 312968

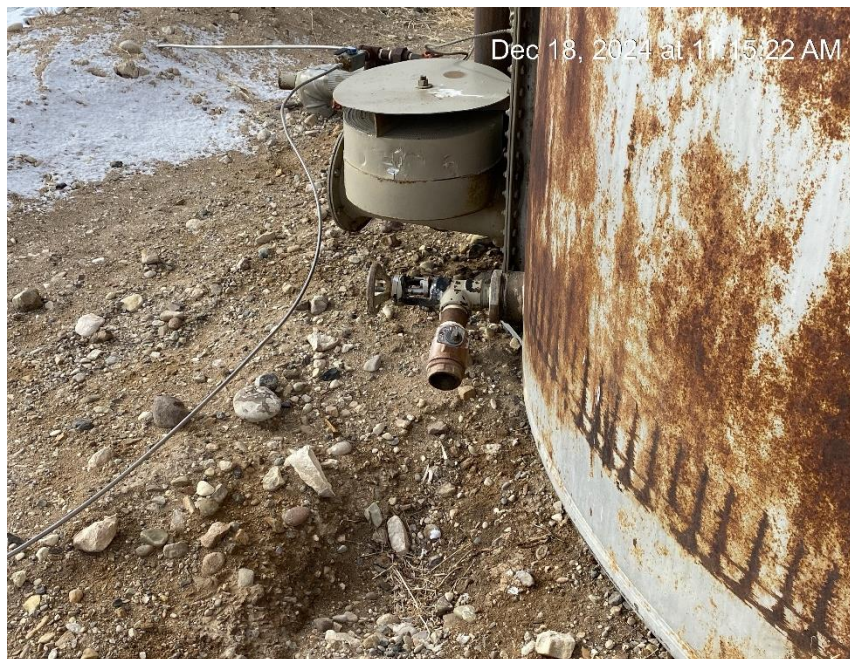


Staining



Debris

Antler Energy LLC
Powder Wash Federal 28-3
Location ID: 312968



Open end tank valve. Staining



Staining

Antler Energy LLC
Powder Wash Federal 28-3
Location ID: 312968



Production pit

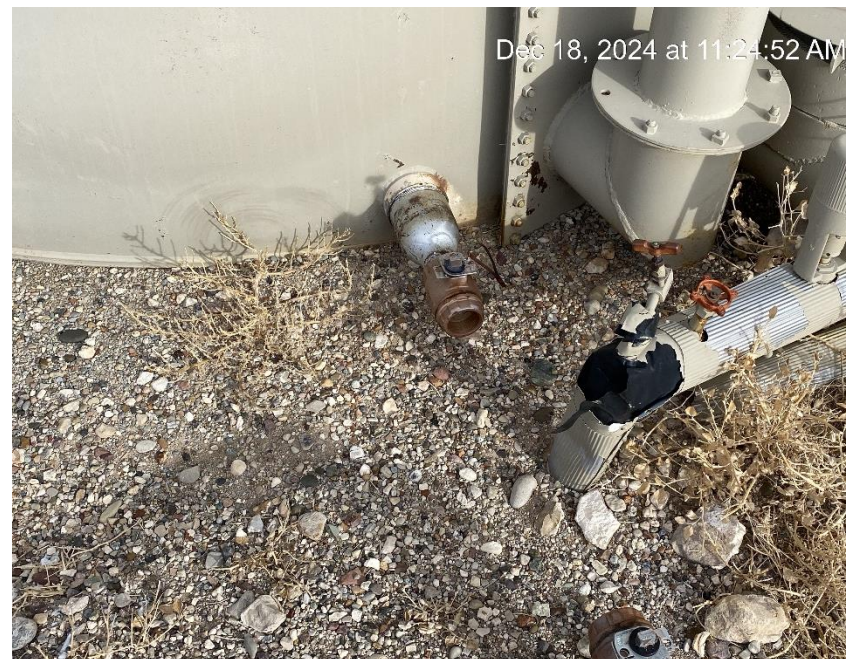


Production pit

**Antler Energy LLC
Powder Wash Federal 28-3
Location ID: 312968**



Staining



Open end tank valve. Staining

**Antler Energy LLC
Powder Wash Federal 28-3
Location ID: 312968**



Missing bird protection



????

**Antler Energy LLC
Powder Wash Federal 28-3
Location ID: 312968**



No spill containment



Unlabeled tank

Antler Energy LLC
Powder Wash Federal 28-3
Location ID: 312968



Oily waste and staining



Oily waste and staining

Antler Energy LLC
Powder Wash Federal 28-3
Location ID: 312968



Oily waste and staining



Oily waste and staining

**Antler Energy LLC
Powder Wash Federal 28-3
Location ID: 312968**



Oily waste and staining



Oily waste and staining

Antler Energy LLC
Powder Wash Federal 28-3
Location ID: 312968



Debris



Debris

Antler Energy LLC
Powder Wash Federal 28-3
Location ID: 312968



Unused pit



Unused pit

Antler Energy LLC
Powder Wash Federal 28-3
Location ID: 312968



Sign missing required information



Location from Northwest corner

**Antler Energy LLC
Powder Wash Federal 28-3
Location ID: 312968**



Location from Southeast corner



Location from Northeast corner