

Dataset: chevron-4-frico-16-15_cbl_4inch.db: field/well/cbl-/0-main
 Total length: 18.93 ft
 Total weight: 105.00 lb
 O.D.: 2.75 in

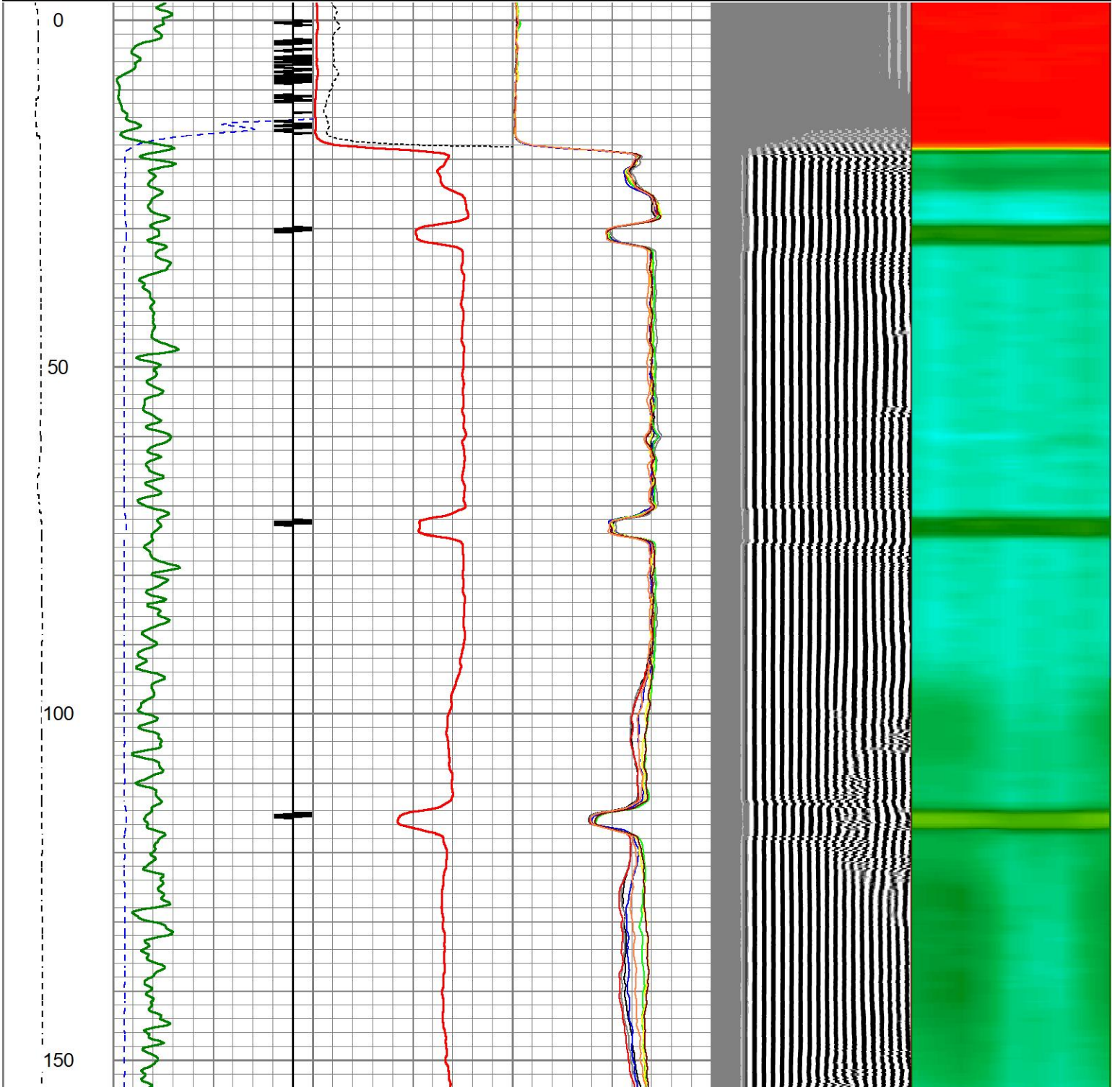


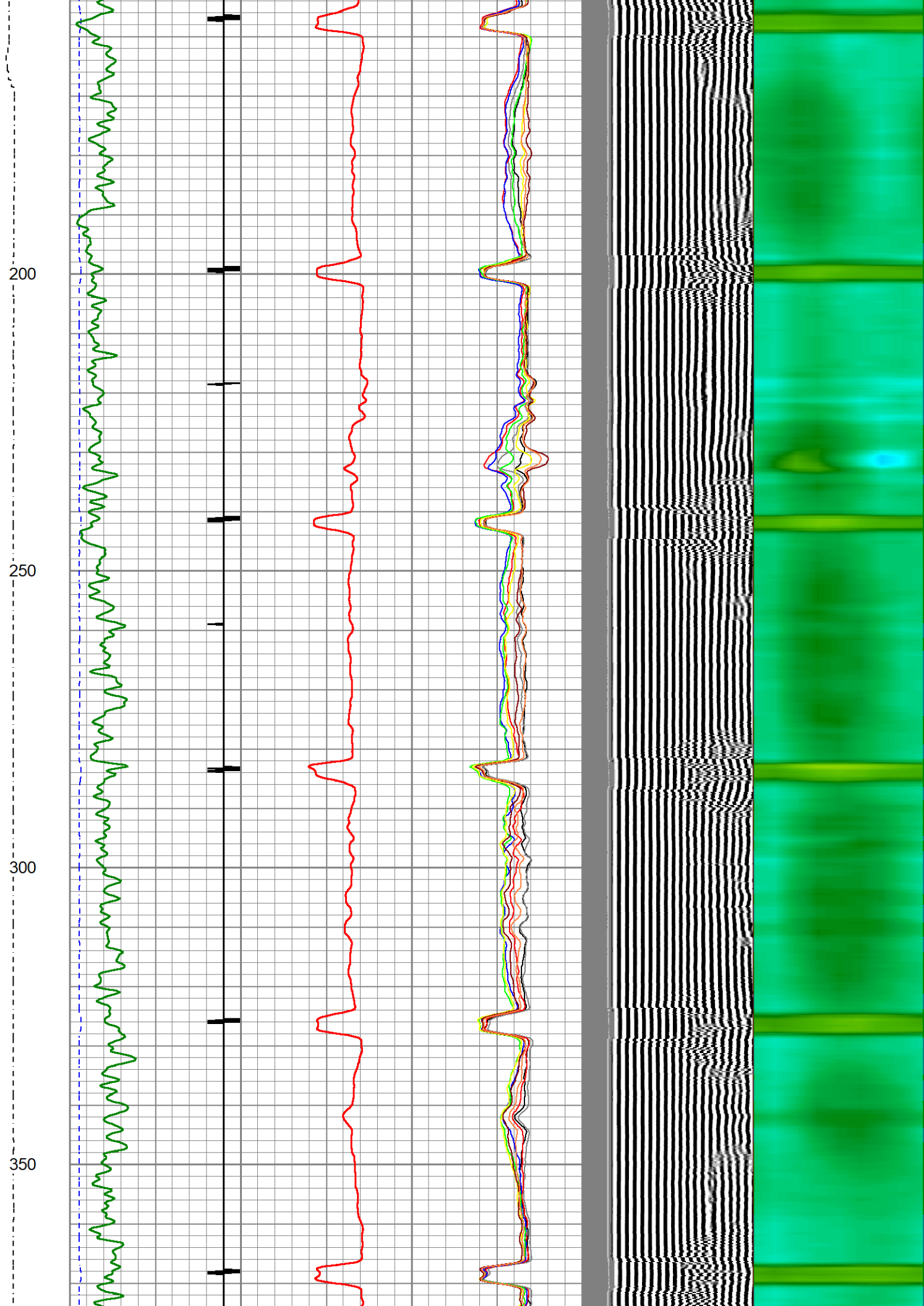
NO PRESSURE PASS

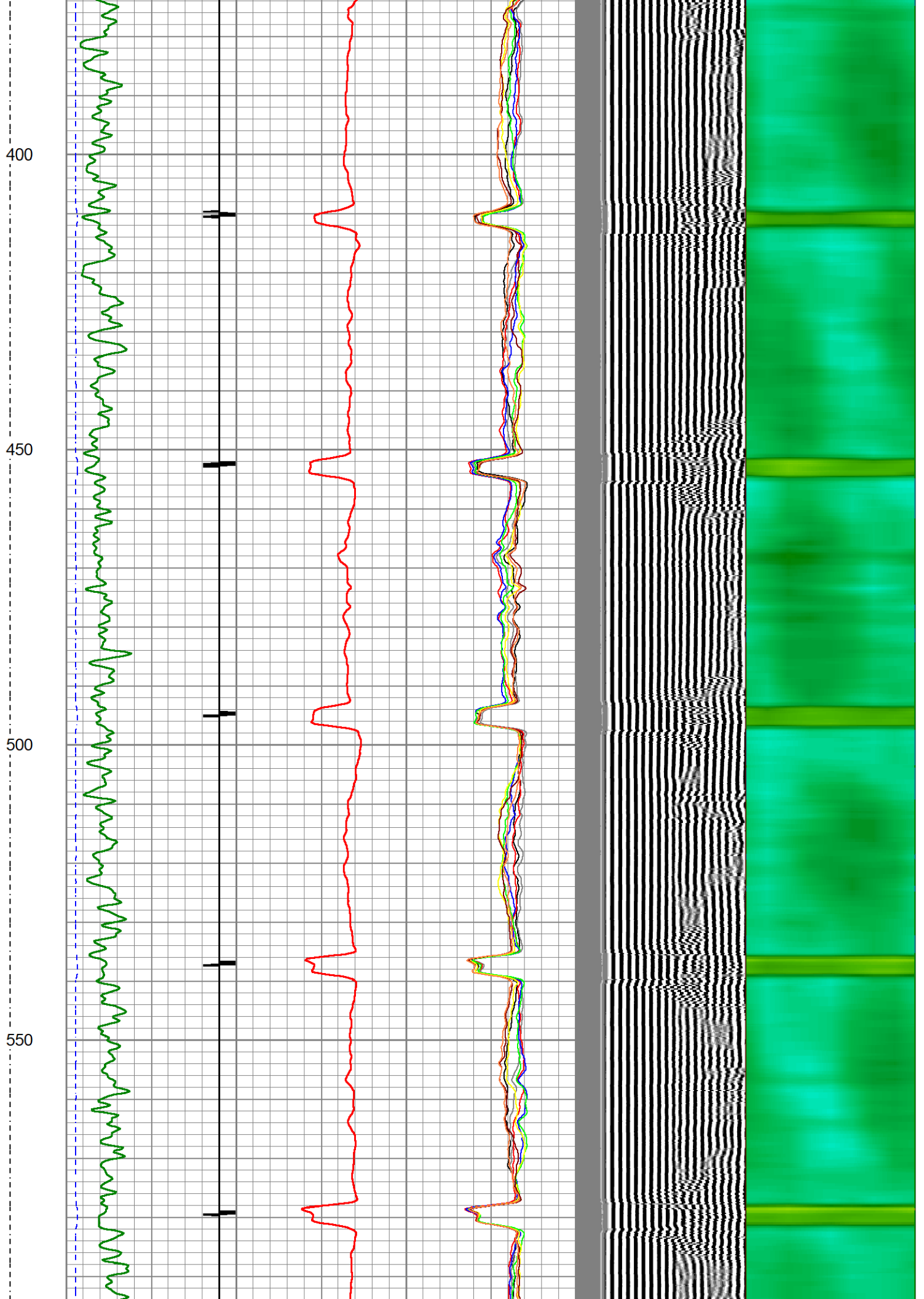
ENERGY SERVICES

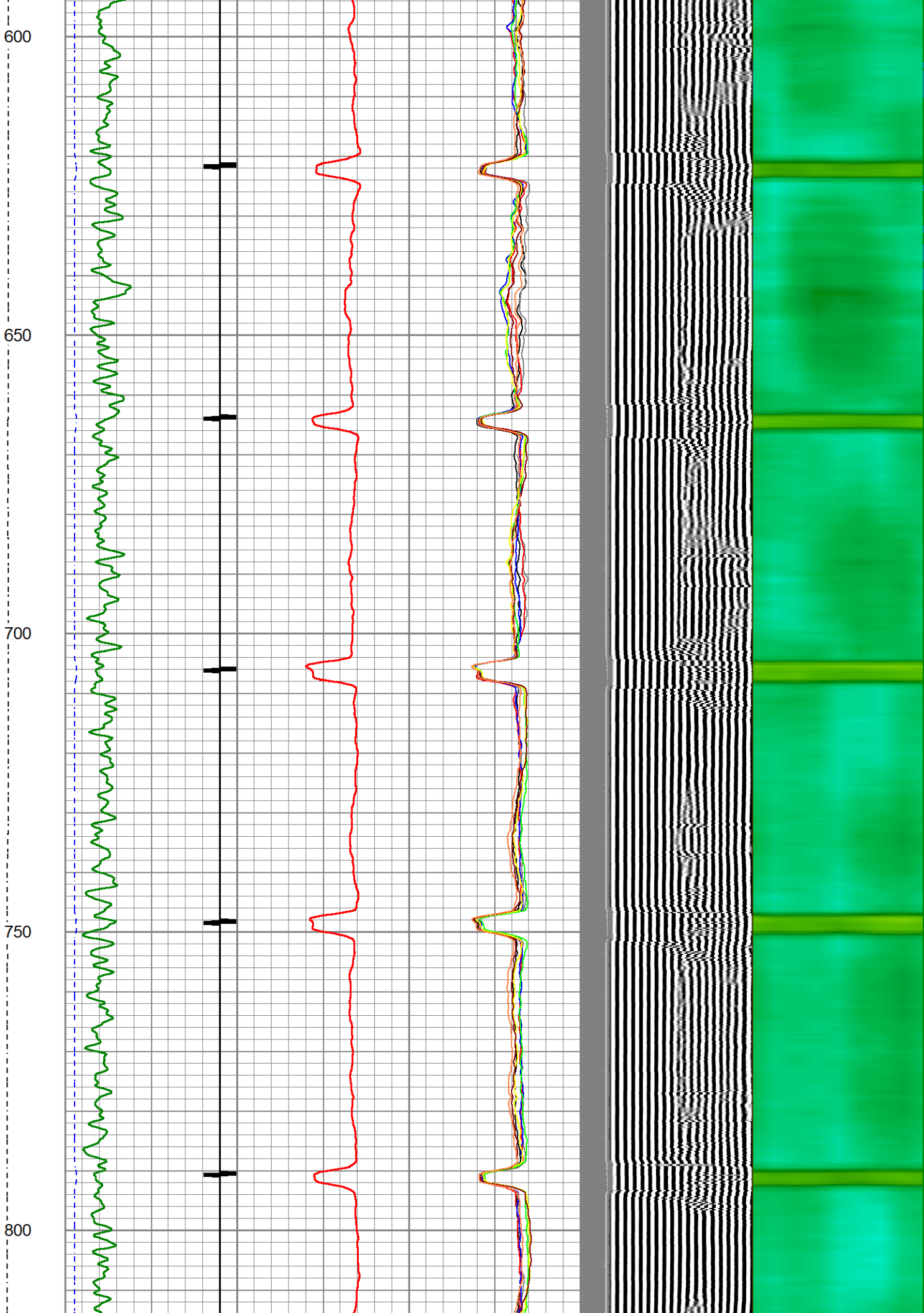
Database File chevron-4-frico-16-15_cbl_4inch.db
 Dataset Pathname cbl-/0-main
 Presentation Format ips_rbtcolorcivitas2
 Dataset Creation Fri Aug 09 10:43:36 2024
 Charted by Depth in Feet scaled 1:240

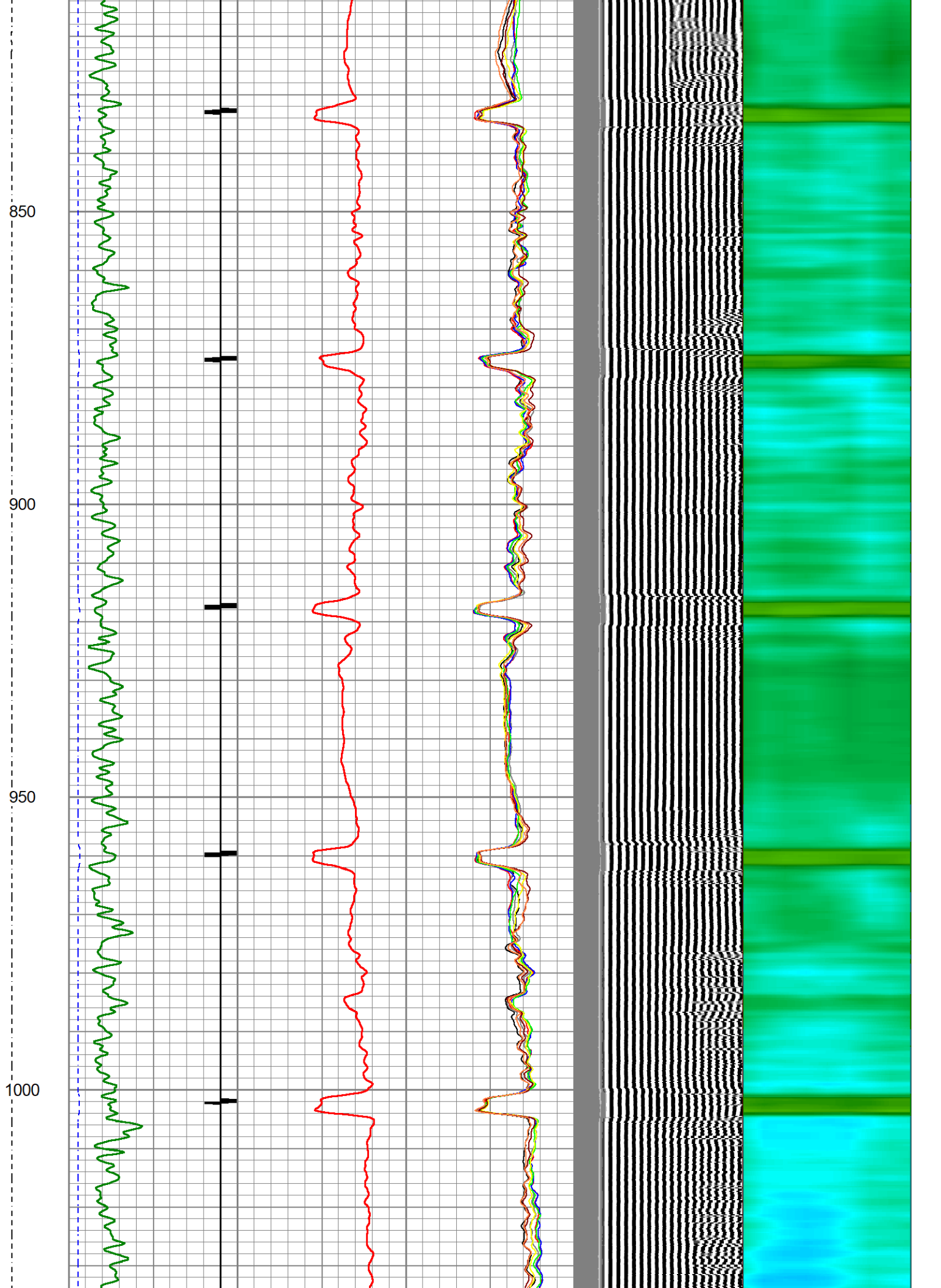
LSPD	200	TT (usec)	1000	0	AMP (mV)	100	0	AMPS1	100	200	VDL (usec)	1200	1	Cement Map	8
(ft/min)	-9	CCL	1	0	AMPx5 (mV)	20	0	AMPS2	100						
0	-250	0	GR (GAPI)	150				0	AMPS3	100					
		150	GR (GAPI)	400				0	AMPS4	100					
								0	AMPS5	100					
								0	AMPS6	100					
								0	AMPS7	100					
								0	AMPS8	100					

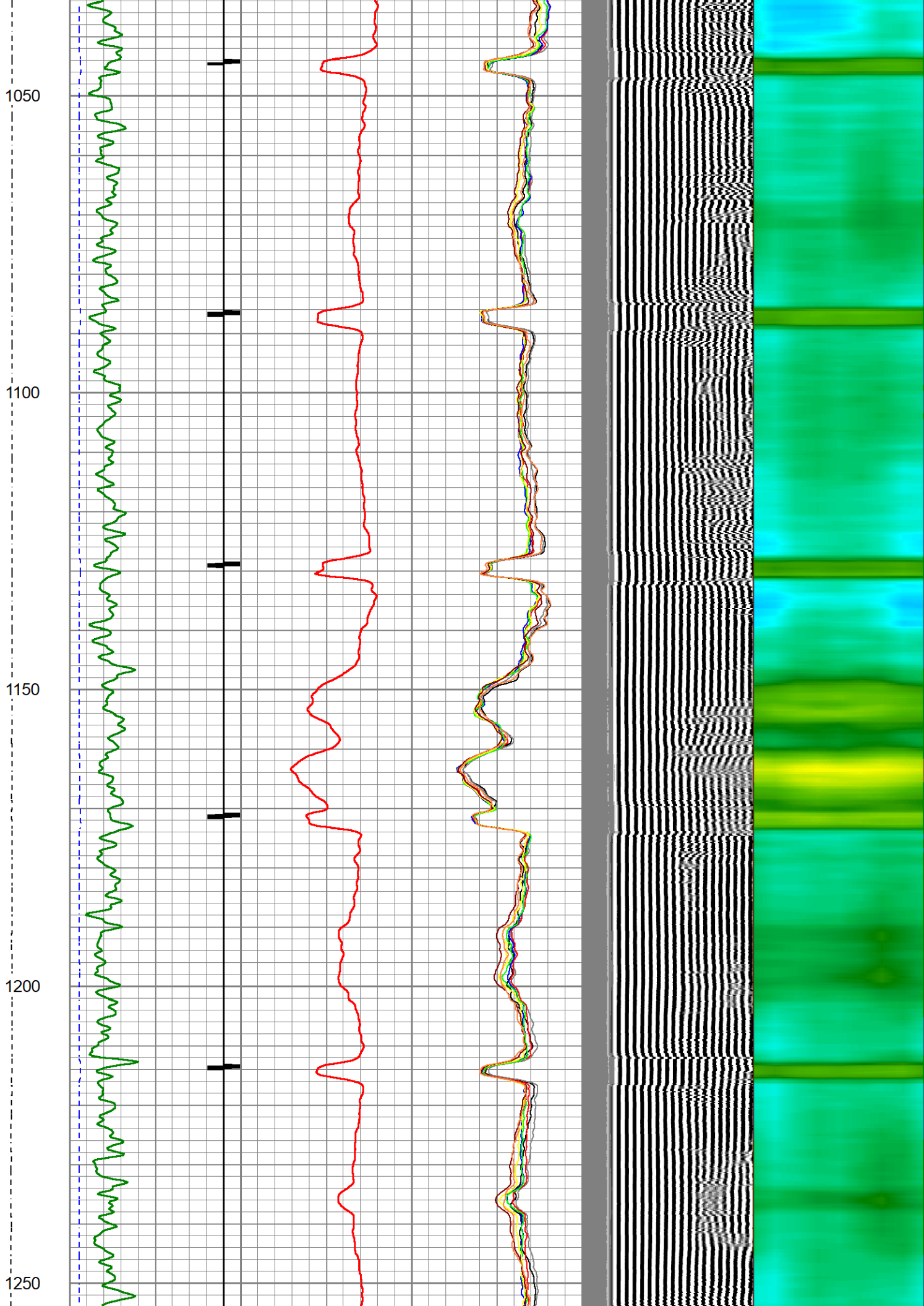


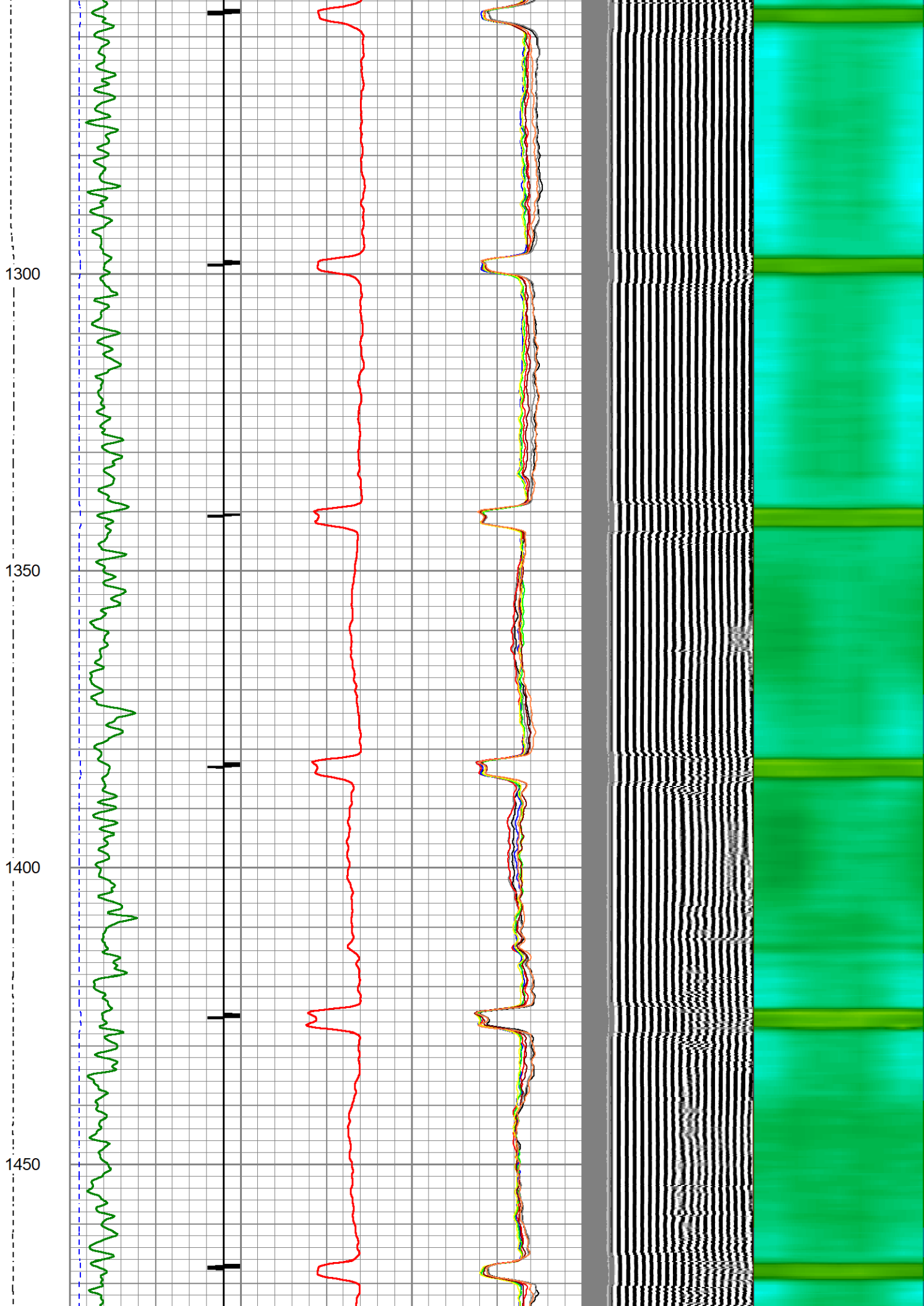


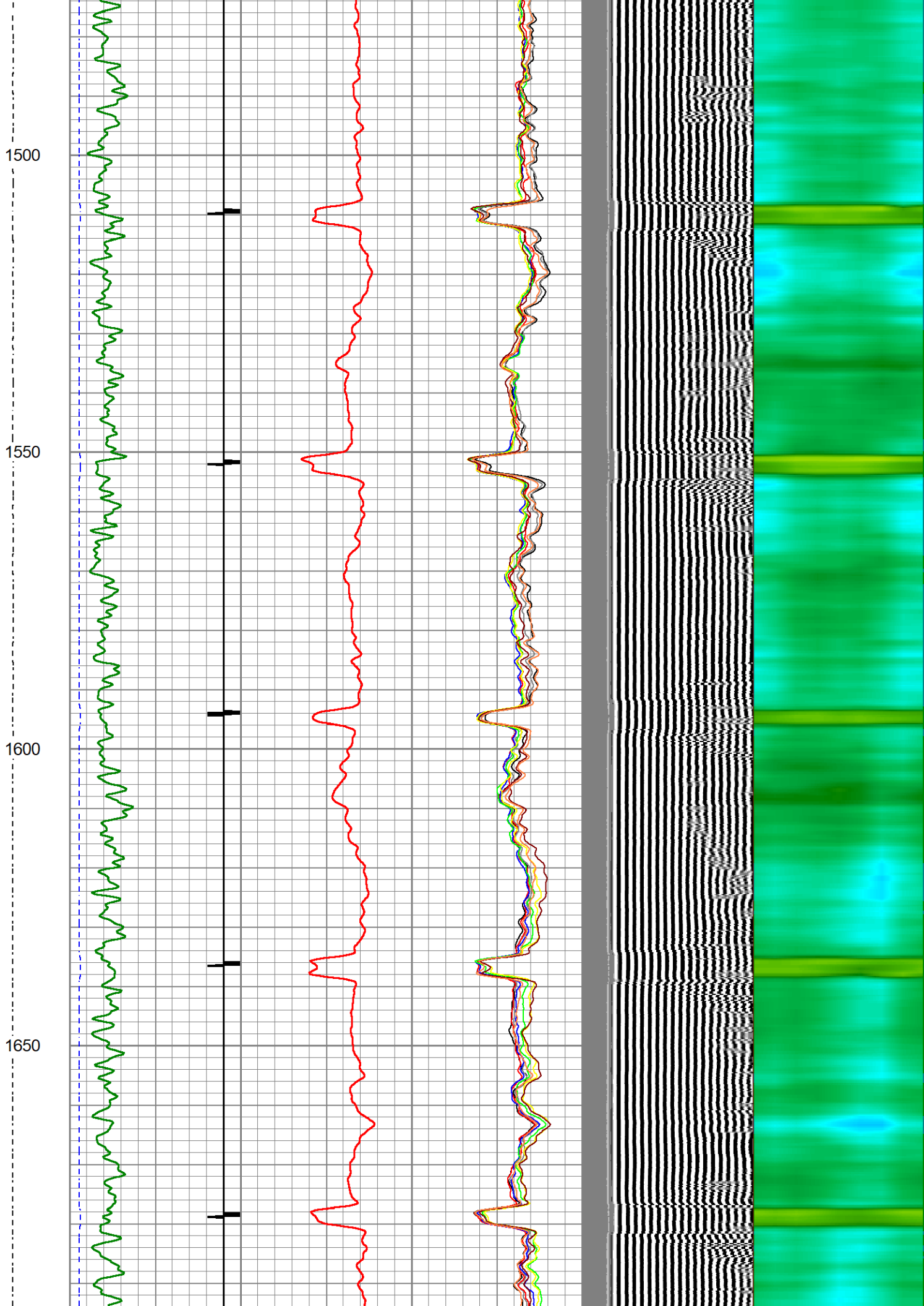


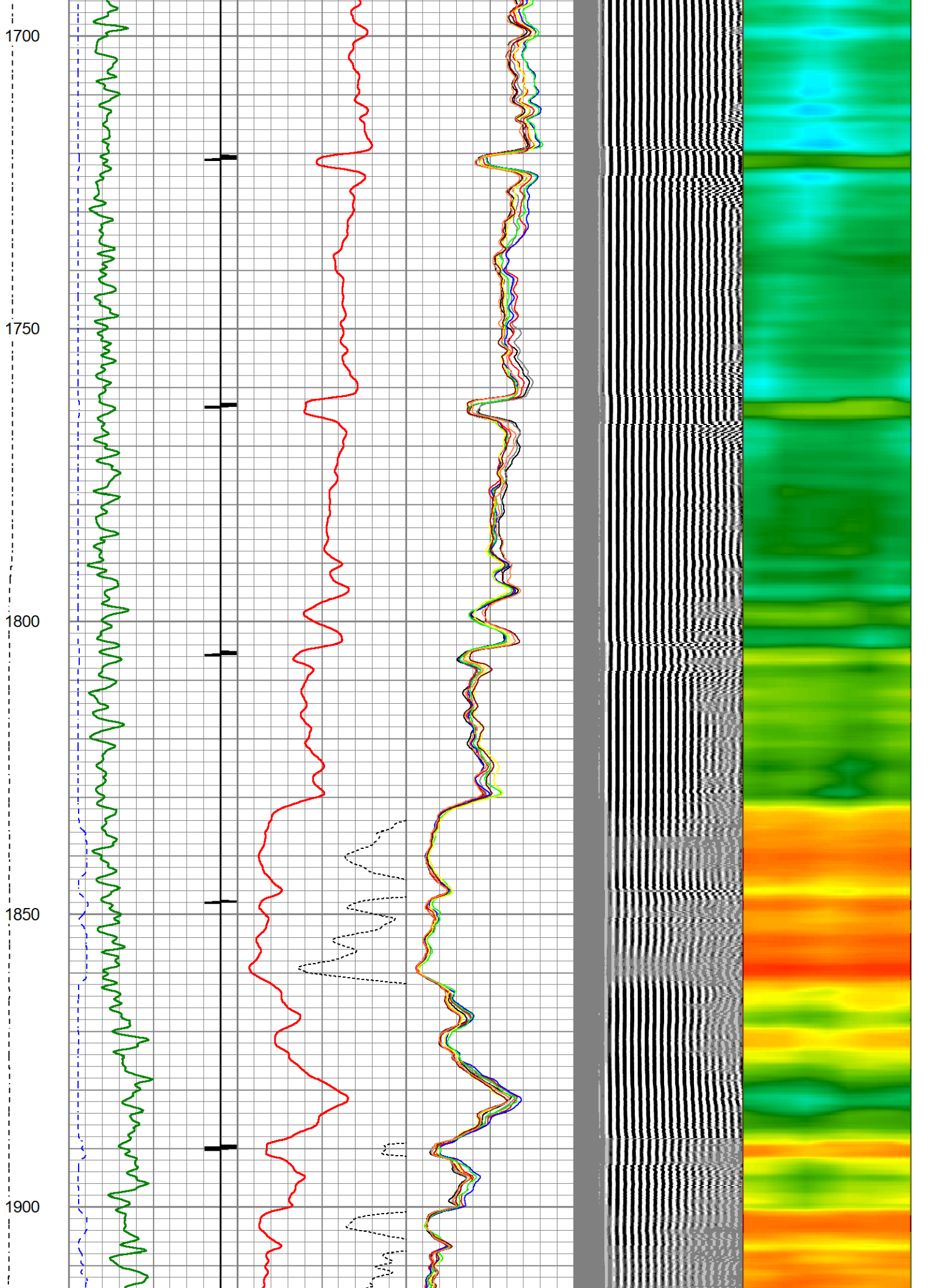


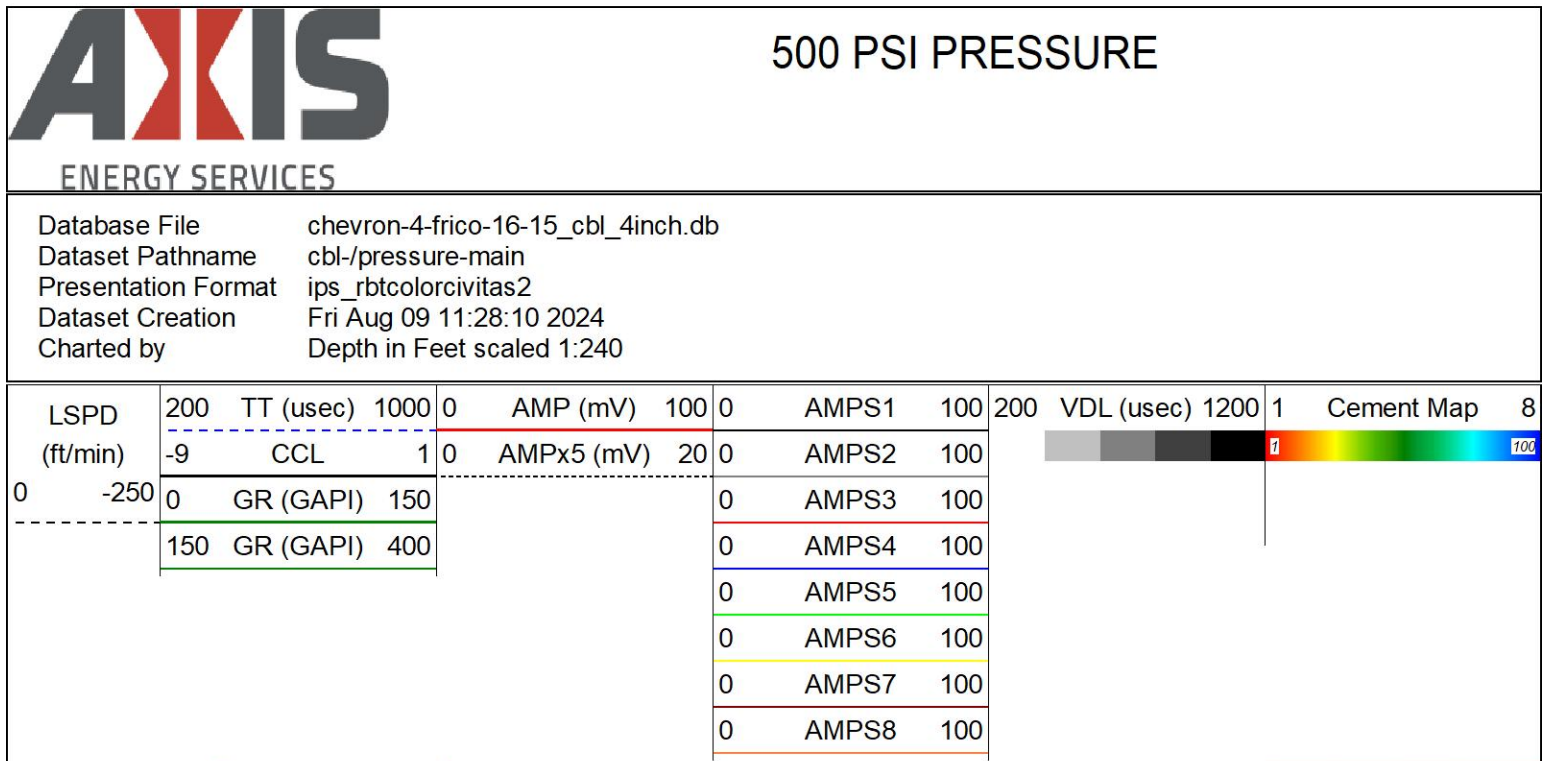
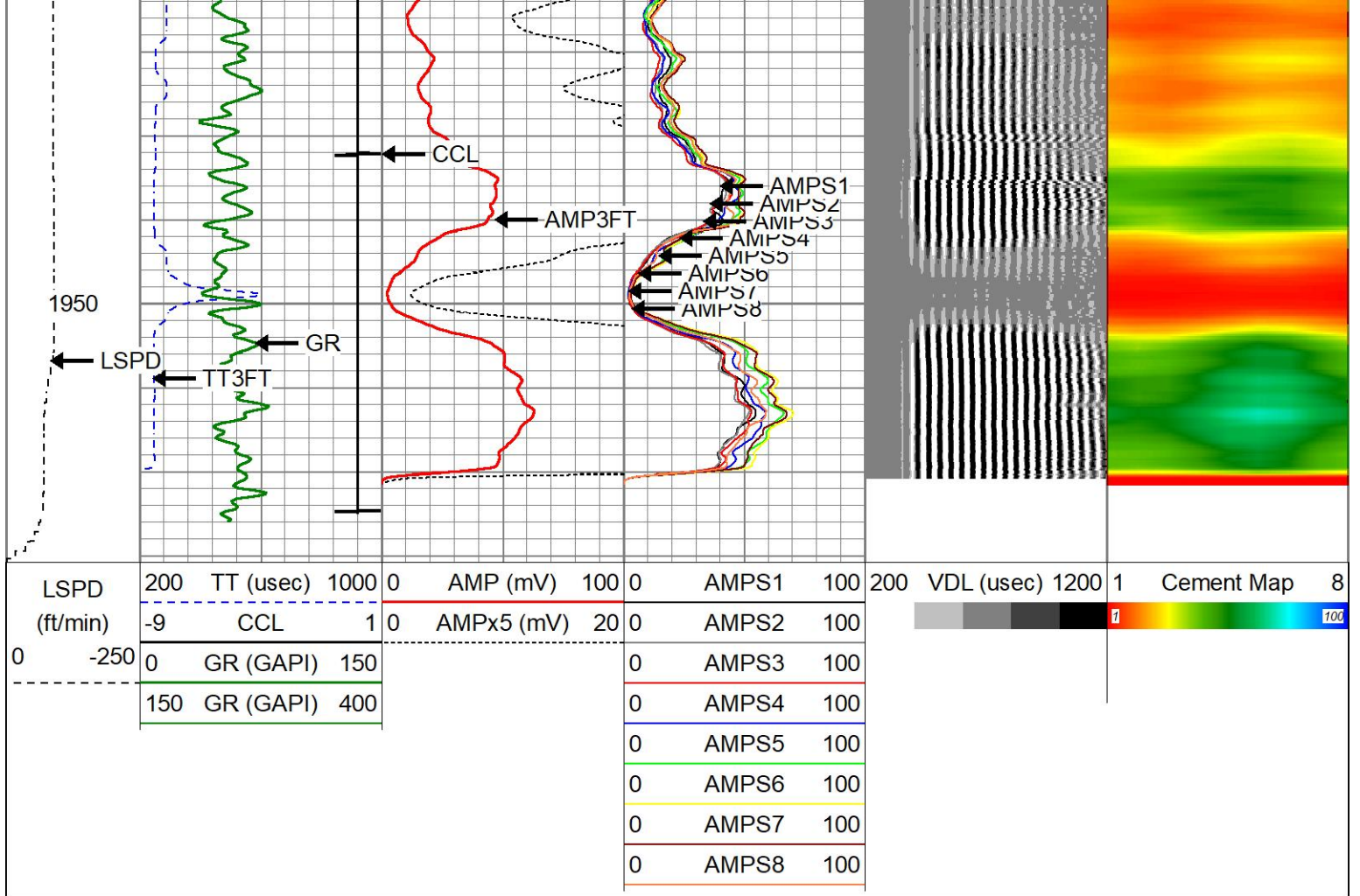


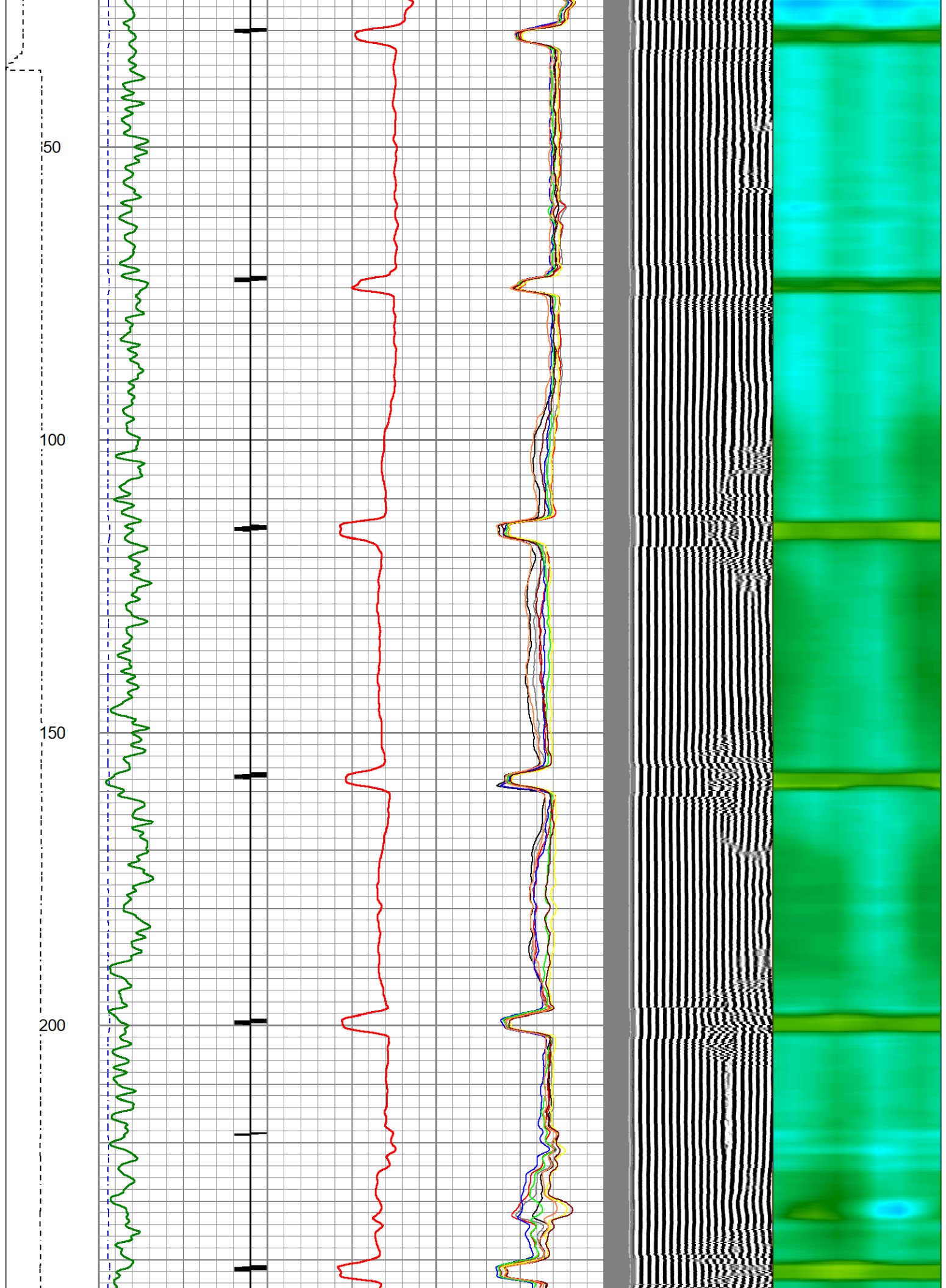




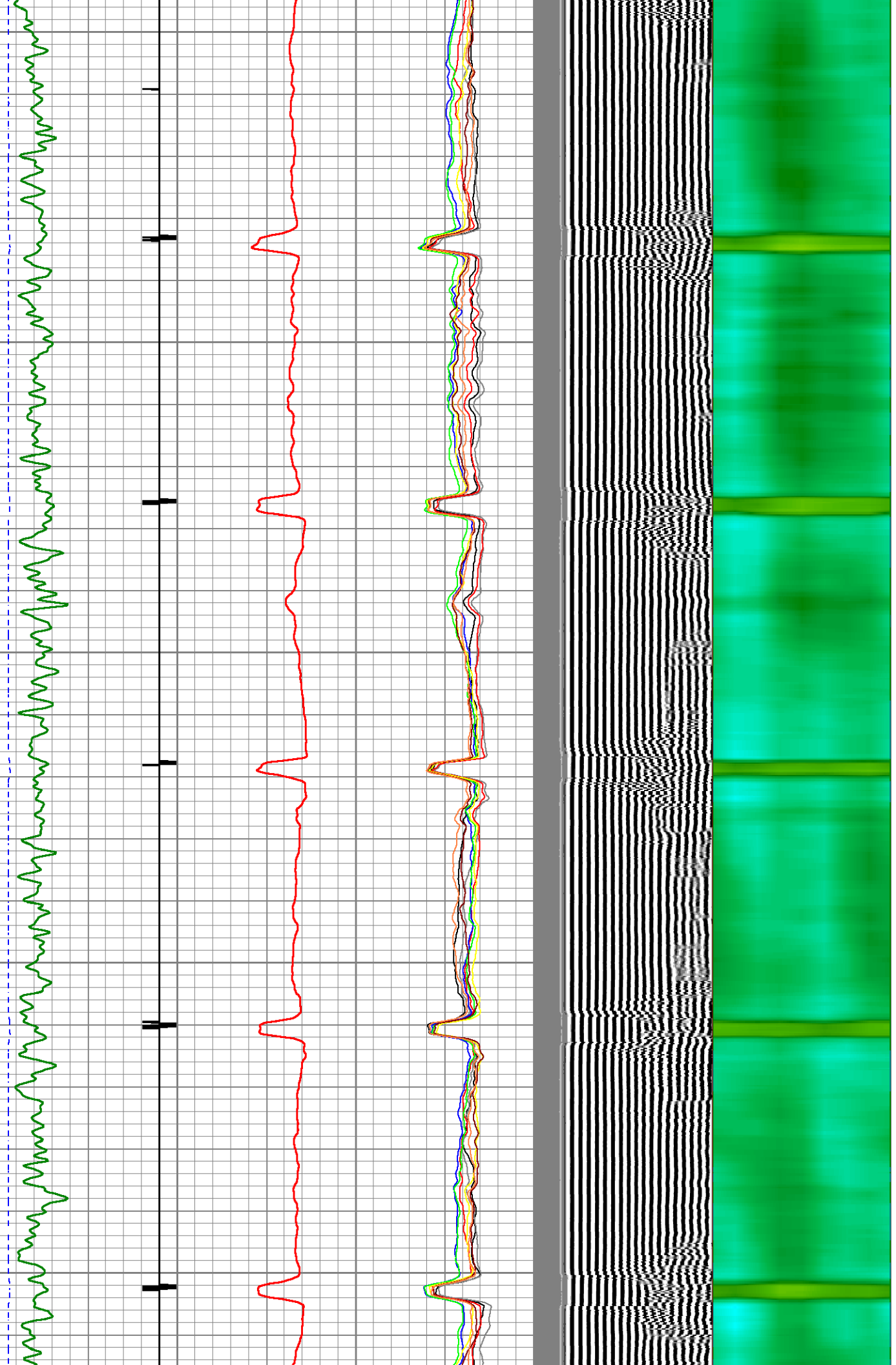


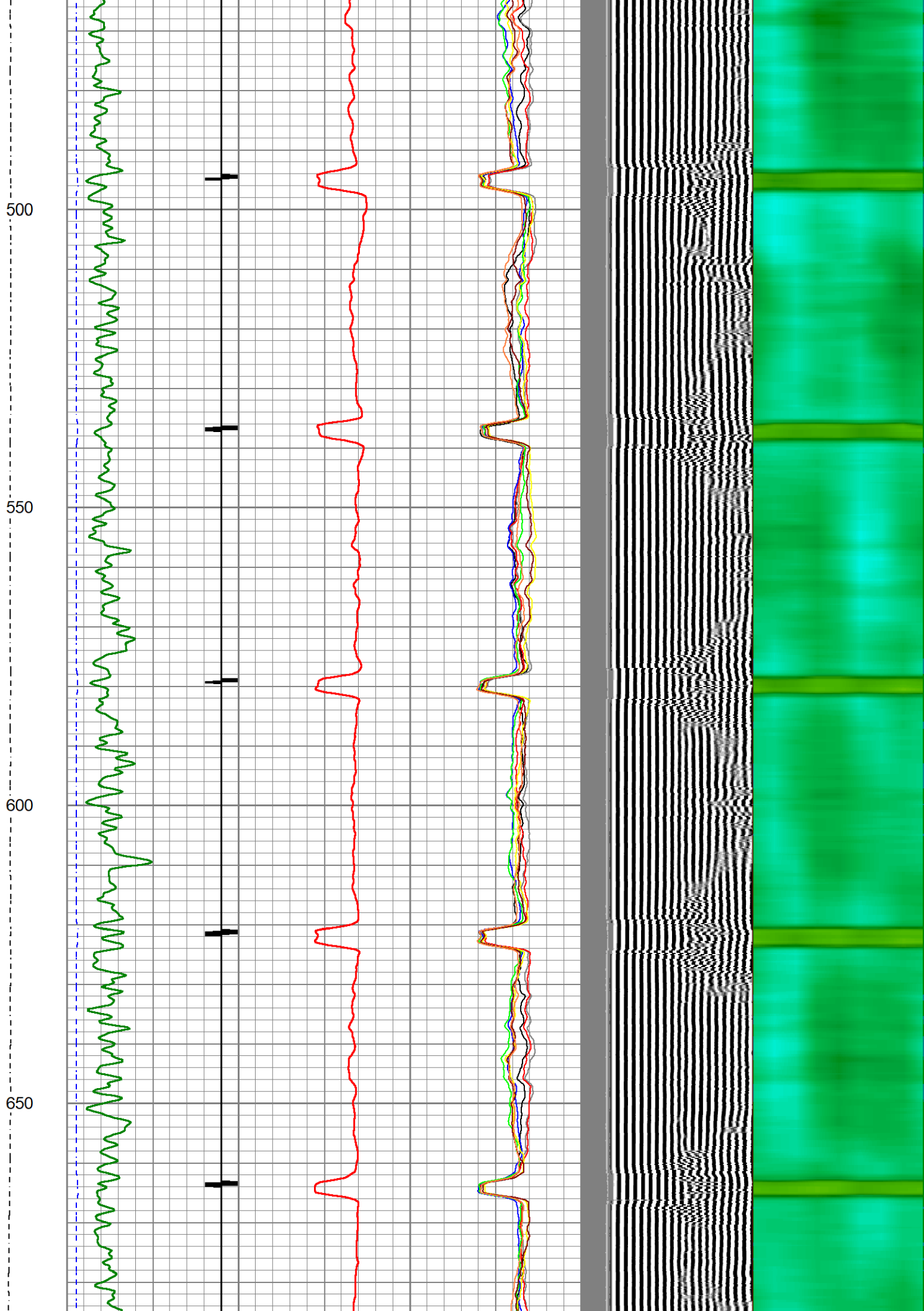


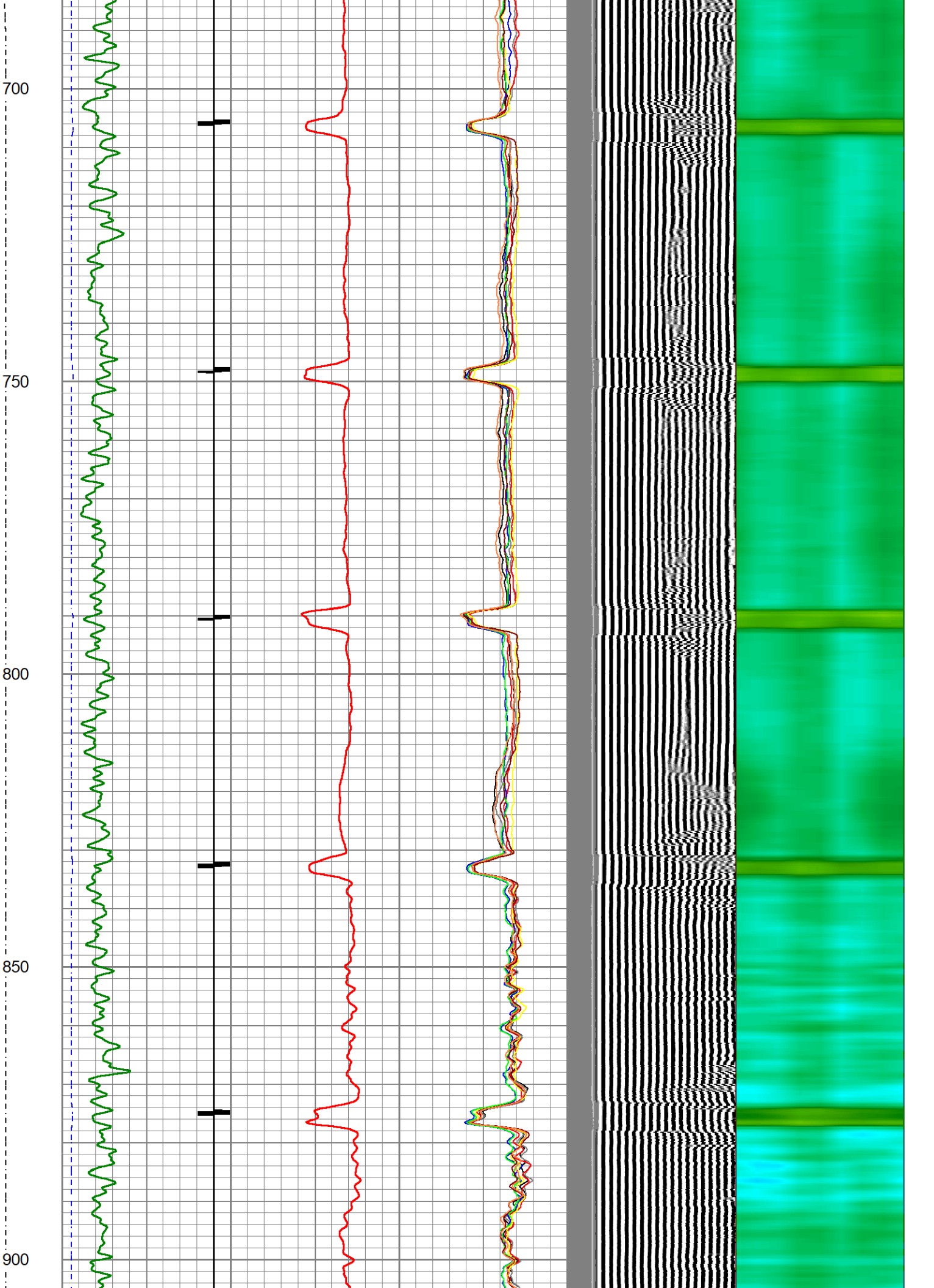


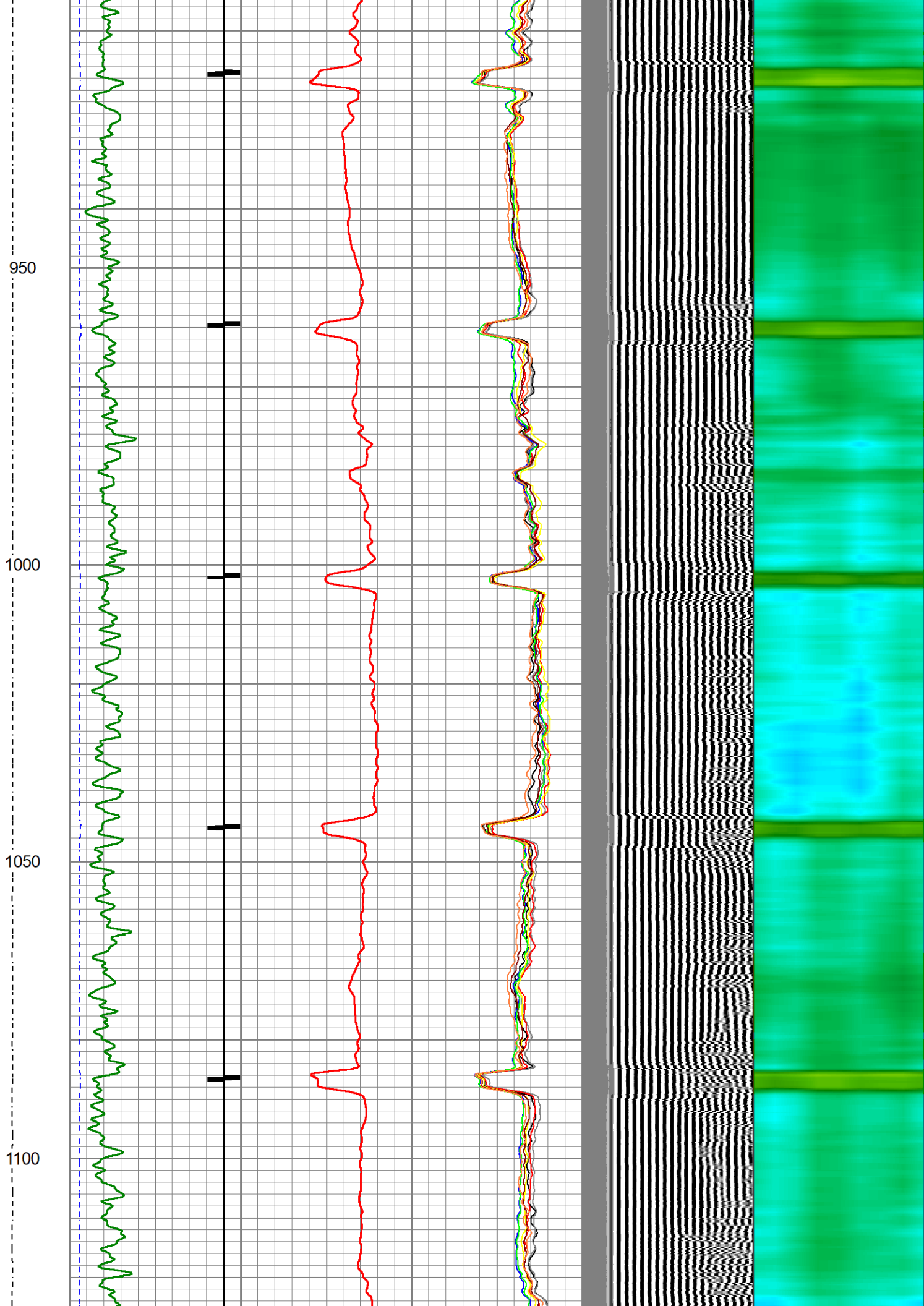


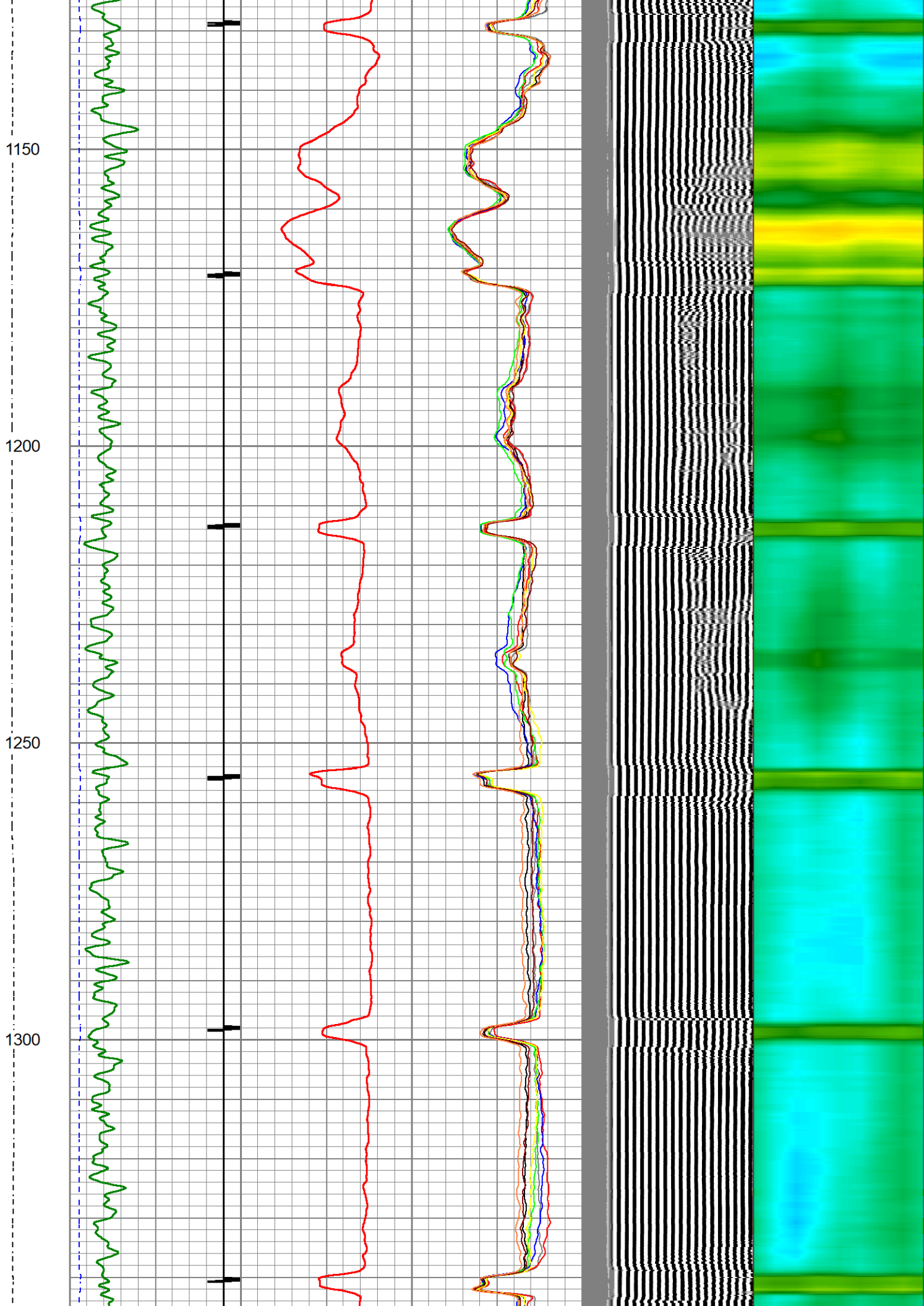
250
300
350
400
450



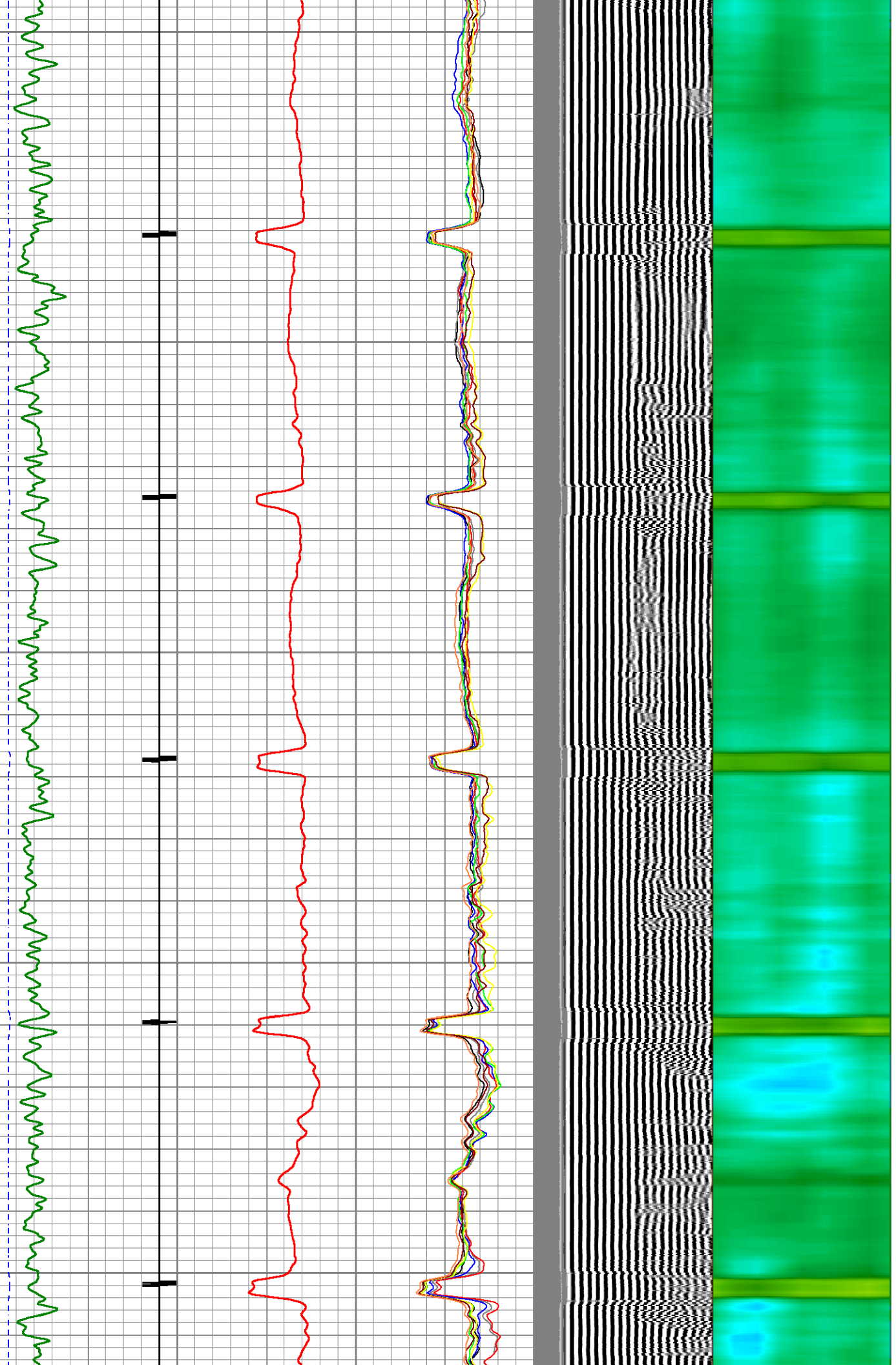


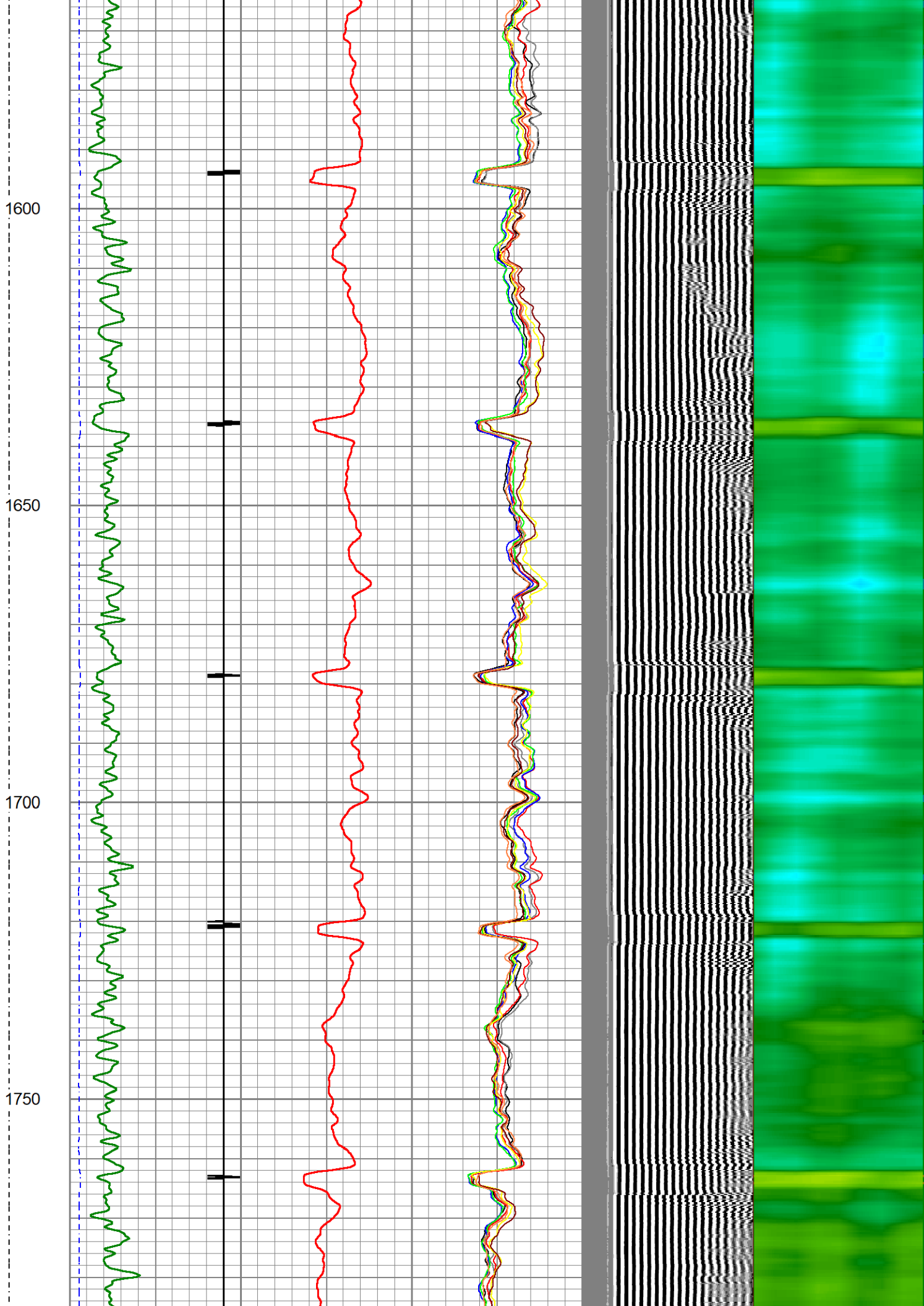


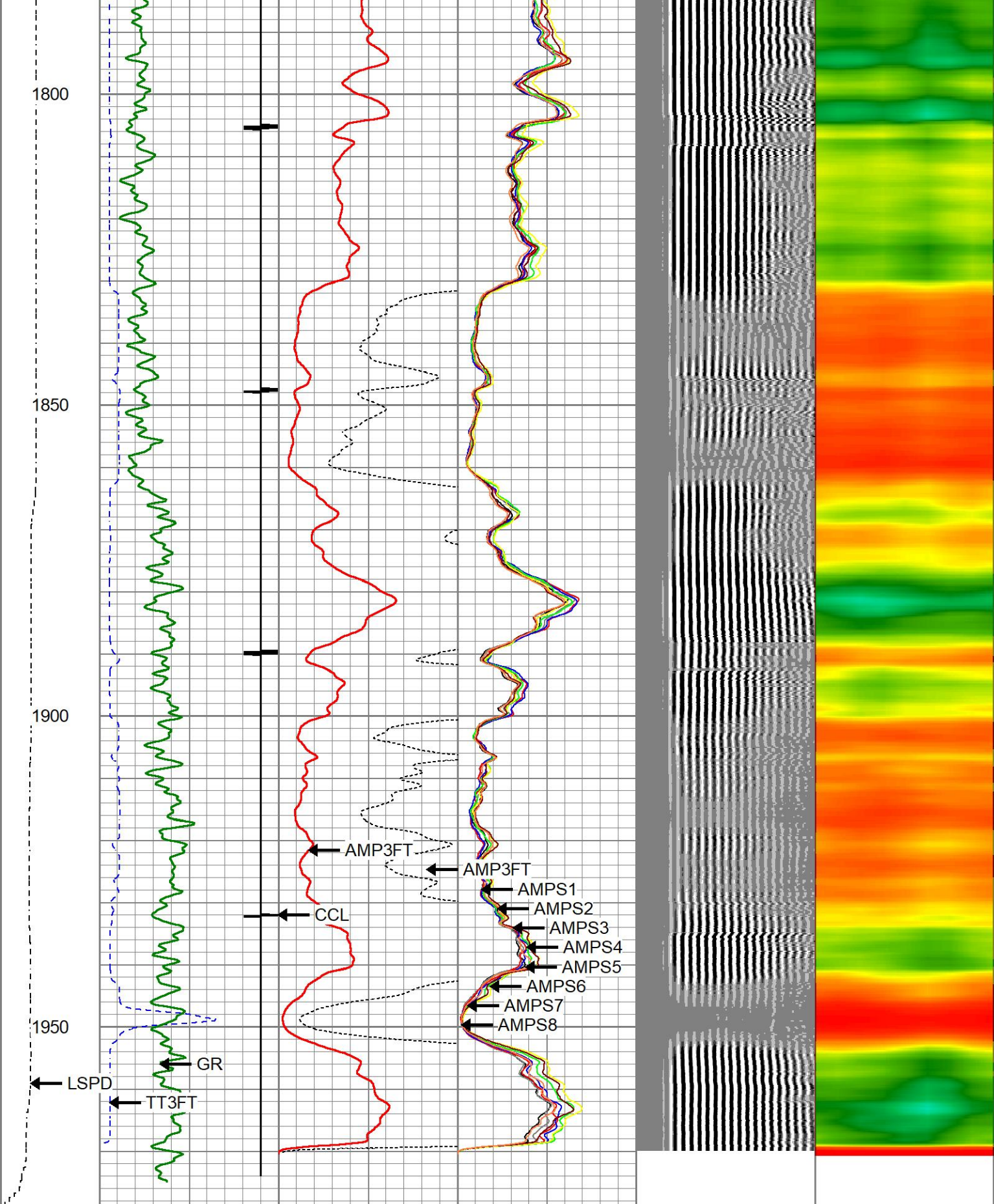




1350
1400
1450
1500
1550







LSPD	200	TT (usec)	1000	0	AMP (mV)	100	0	AMPS1	100	200	VDL (usec)	1200	1	Cement Map	8
(ft/min)	-9	CCL	1	0	AMPx5 (mV)	20	0	AMPS2	100						
0	-250	GR (GAPI)	150					AMPS3	100						
		GR (GAPI)	400					AMPS4	100						
								AMPS5	100						

0	AMPS6	100
0	AMPS7	100
0	AMPS8	100

Calibration Report

Database File chevron-4-frico-16-15_cbl_4inch.db
Dataset Pathname cbl-/0-main
Dataset Creation Fri Aug 09 10:43:36 2024

Gamma Ray Calibration Report

Serial Number: 27GRL10-XXXX
Tool Model: 27GRL10
Performed: Mon Mar 11 13:46:24 2024

Calibrator Value: 1.0 GAPI

Background Reading: 0.0 cps
Calibrator Reading: 1.0 cps

Sensitivity: 0.5000 GAPI/cps

Segmented Cement Bond Log Calibration Report

Serial Number: Greeley Ext Temp
Tool Model: 27SBT10

Calibration Casing Diameter: 4.500 in
Calibration Depth: 88.592 ft

Master Calibration, performed (Derived):

	Raw (v)		Calibrated (mv)		Results	
	Zero	Cal	Zero	Cal	Gain	Offset
3'	-0.011	0.693	0.250	81.196	115.092	1.483
CAL	1.114	1.087				
5'	-0.051	0.626	0.250	81.196	119.471	6.374
SUM						
S1	-0.078	0.619	0.000	81.196	116.395	9.098
S2	-0.009	0.681	0.000	81.196	117.557	1.086
S3	-0.010	0.729	0.000	81.196	109.851	1.146
S4	-0.013	0.770	0.000	81.196	103.741	1.319
S5	-0.016	0.782	0.000	81.196	101.705	1.639
S6	-0.051	0.774	0.000	81.196	98.425	5.001
S7	-0.011	0.771	0.000	81.196	103.947	1.103
S8	-0.010	0.716	0.000	81.196	111.869	1.117

Internal Reference Calibration, performed Thu Mar 10 14:36:00 2022:

	Raw (v)		Calibrated (v)		Results	
	Zero	Cal	Zero	Cal	Gain	Offset
CAL	0.000	0.000	1.114	1.087	1.000	0.000

Air Zero Calibration, performed Fri Aug 9 09:04:36 2024:

	Raw (v)		Calibrated (v)		Results	
	Zero		Zero		Offset	

3'	0.011	0.000	-0.011
5'	0.010	0.000	-0.051
SUM			
S1	0.009	0.000	-0.078
S2	0.009	0.000	-0.009
S3	0.011	0.000	-0.010
S4	0.013	0.000	-0.013
S5	0.016	0.000	-0.016
S6	0.014	0.000	-0.051
S7	0.011	0.000	-0.011
S8	0.010	0.000	-0.010



Company	CHEVRON		
Well	FRICO 16-15		
Field	WATTENBERG		
County	WELD		
State	CO	Country	USA