

TIN, RIO2W, 6<sup>th</sup> P.M.

PROJECT

CHEVRON OIL COMPANY

Well location, located as shown  
in the NW 1/4 NW 1/4 Section  
4, TIN, RIO2W, 6th P.M.,  
Rio Blanco County, Colorado.

NOTE:

Elev. Ref. Pt.	250'	South	=	5202.39'
"	"	"	=	5203.67'
"	"	250' West	=	5205.72'
"	"	300' "	=	5206.73'

COLO. OIL & GAS CONS. COMM.

RECEIVED  
JAN 28 1974



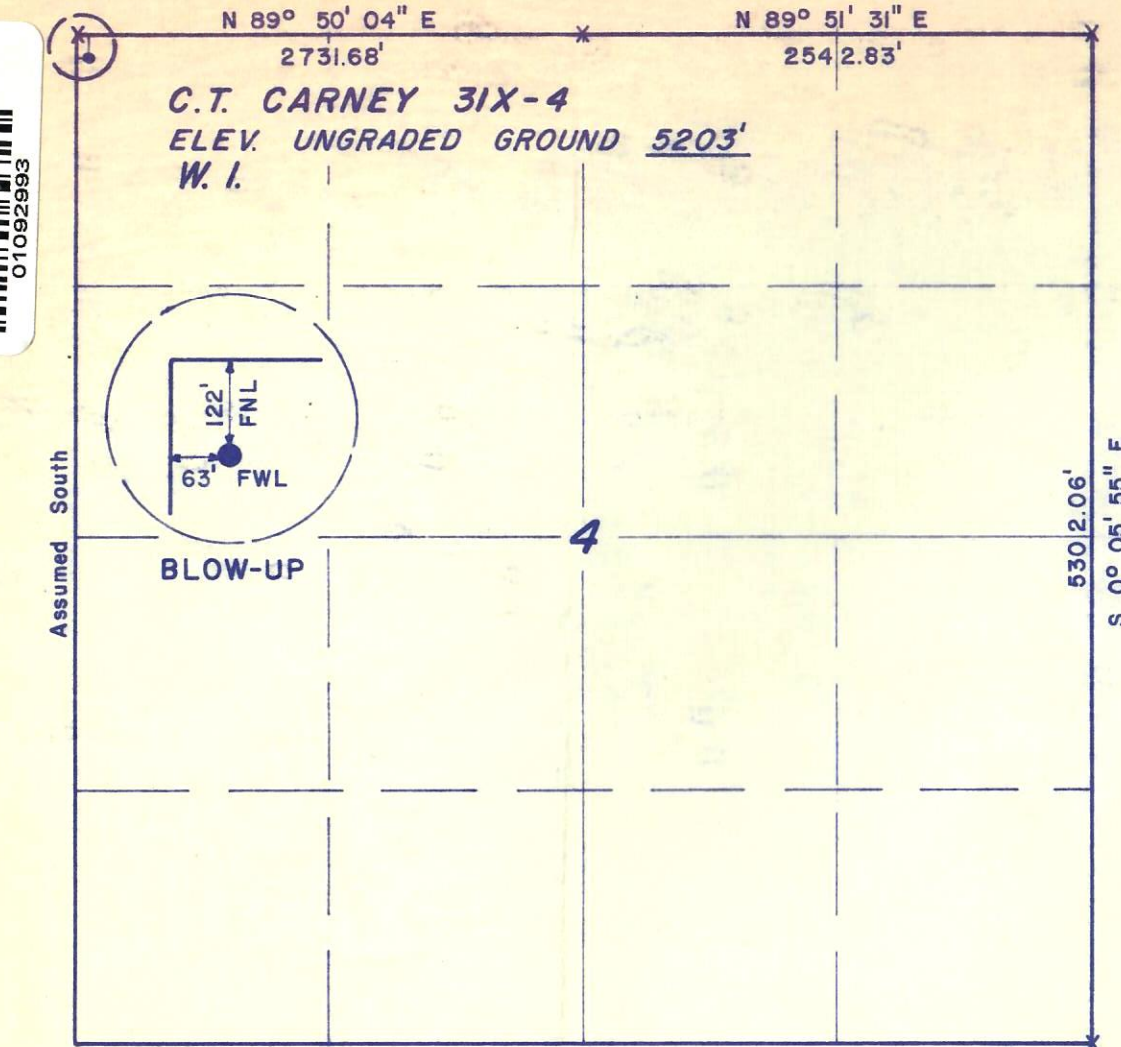
CERTIFICATE

THIS IS TO CERTIFY THAT THE ABOVE PLAT WAS PREPARED FROM  
FIELD NOTES OF ACTUAL SURVEYS MADE BY ME OR UNDER MY  
SUPERVISION AND THAT THE SAME ARE TRUE AND CORRECT TO THE  
BEST OF MY KNOWLEDGE AND BELIEF.

*Nelson J. Marshall*  
REGISTERED LAND SURVEYOR  
REGISTRATION NO 5839  
STATE OF COLORADO

UINTAH ENGINEERING & LAND SURVEYING  
P. O. BOX Q - 110 EAST - FIRST SOUTH  
VERNAL, UTAH - 84078

SCALE 1" = 1000'	DATE December 6, 1973
PARTY NJM	REFERENCES
WEATHER Cold	FILE CHEVRON OIL CO.



X = Section Corners Located