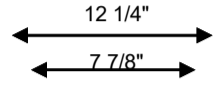




Impetro Resources, LLC

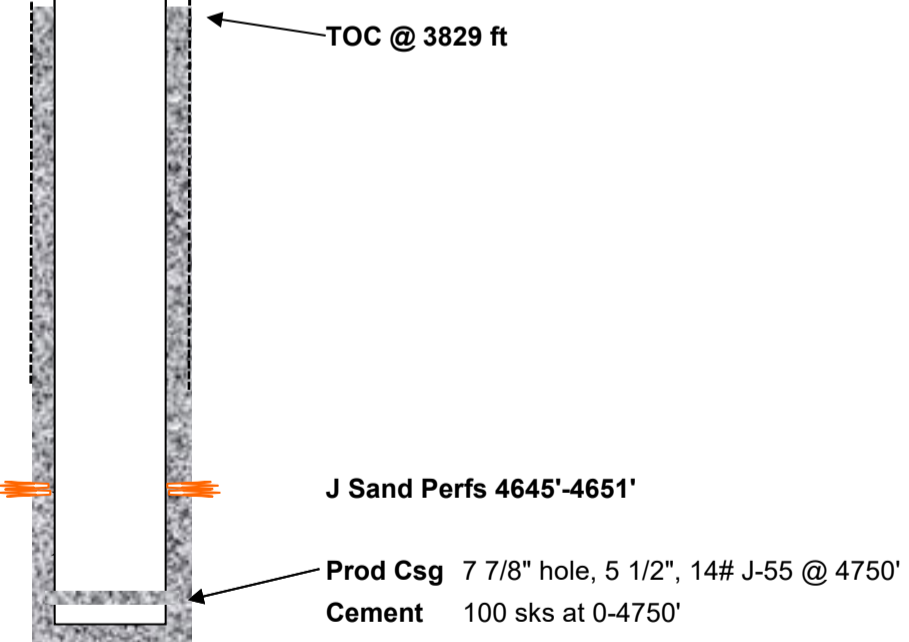
General Well Info			
Well Name:	Decker 32-18 #3	Field:	Bison
Diagram Date:	12/11/2024	County:	Washington
Srf Location:	SWNE 18 4S53W	State:	Colorado
Spud:	8/17/1961	API #:	05-121-05134
GL Elev:	5047'		
Formation Tops			
Zone	Depth	Zone	Depth
Niobrara	3666'	Bentonite	4503'
Codell	4195'	D Sand	4594'
Carlile	4204'	J Sand	4639'



Srf Csg 12 1/4" hole, 8 5/8", 24# H-40 @ 140'
Cement 90 sks at 140' to surface

Srf Csg 12 1/4" hole, 8 5/8", 24# H-40 @ 140'
 Cmt 90 sks at 140' to surface
 1st Csg 7 7/8" hole, 5 1/2", 14# J-55 @ 4750'
 Cmt 100 sks at 0-4750'

TOC Calculation		
15# cement slurry density	1.51	cuft/sx
	100	sx
Volume of cement	151	cuft
Piping	5.7737	ft/cuft
Cement height	871.8287	ft
Casing Set Depth	4701	ft
Calculated TOC	3829	ft



PBTD 4701' KB
TD 4753' KB