

TABLE 1
SUMMARY OF VOLATILE ORGANIC SOIL CHEMISTRY DATA
NOBLE 100322
BEELER 22-12, 13 TANK BATTERY, WELD COUNTY, COLORADO
REM # 21781

Sample ID	Sample Date	Depth (ft)	Benzene (mg/kg)	Toluene (mg/kg)	Ethyl-Benzene (mg/kg)	Xylenes (mg/kg)	1,2,4- Trimethyl- Benzene (mg/kg)	1,3,5- Trimethyl- Benzene (mg/kg)	Naphthalene (mg/kg)	TPH (mg/kg)	TPH GRO (mg/kg)	TPH DRO (mg/kg)	TPH ORO (mg/kg)
ECMC Table 915-1 Limits (Residential SSL)			1.2	490	5.8	58	30	27	2	500	500**		
ECMC Table 915-1 Limits (Protection of Groundwater SSL)			0.0026	0.69	0.78	9.9	0.0081	0.0087	0.0038	500	500**		
AST01@1.0'	3/2/2022	1	<0.002	0.017	0.046	6.5	6.5	6.1	0.013	869	150	670	<50
B01@7.0'	3/3/2022	7	<0.002	<0.005	<0.005	<0.01	<0.005	<0.005	0.017	<500	6.4	290	<50
S01@5.5'	3/3/2022	5.5	<0.002	<0.005	<0.005	<0.01	<0.005	<0.005	<0.0038	<500	<0.5	<50	<50
SEP01@6.0"	3/2/2022	0.5	0.023	0.300	0.41	<0.01	1.7	0.59	0.16	809	480	280	<50
SEP02@6.0"	3/2/2022	0.5	<0.002	<0.005	<0.005	<0.01	<0.005	<0.005	0.0047	<500	0.56	<50	<50
SB-1 13ft	5/3/2022	13	<0.0020	<0.0050	<0.0050	<0.010	<0.0050	<0.0050	<0.0038	<500	<0.5	<50	<50
SB-2 12ft	5/3/2022	12	<0.0020	<0.0050	<0.0050	<0.010	<0.0050	<0.0050	<0.0038	<500	<0.5	<50	<50
SB-3 12ft	5/3/2022	12	<0.0020	<0.0050	<0.0050	<0.010	<0.0050	<0.0050	<0.0038	<500	<0.5	<50	<50
SB-4 12ft	5/3/2022	12	<0.0020	<0.0050	<0.0050	<0.010	<0.0050	<0.0050	<0.0038	<500	<0.5	<50	<50
SB-5 12ft	5/3/2022	12	<0.0020	<0.0050	<0.0050	<0.010	<0.0050	<0.0050	<0.0038	<500	<0.5	<50	<50
SB-6 12ft	5/3/2022	12	<0.0020	<0.0050	<0.0050	<0.010	<0.0050	<0.0050	<0.0038	<500	<0.5	<50	<50
SB-7 12ft	5/3/2022	12	<0.0020	<0.0050	<0.0050	<0.010	<0.0050	<0.0050	<0.0038	<500	<0.5	<50	<50
SB-8 10ft	5/3/2022	10	<0.0020	<0.0050	<0.0050	<0.010	<0.0050	<0.0050	<0.0038	<500	<0.5	<50	<50
SB-9 7ft	5/3/2022	7	<0.0020	<0.0050	<0.0050	<0.010	<0.0050	<0.0050	<0.0038	<500	3.5	270	<50
SB-10 11ft	5/3/2022	11	<0.0020	<0.0050	<0.0050	<0.010	<0.0050	<0.0050	<0.0038	<500	<0.5	<50	<50
SB-11 6ft	5/3/2022	6	<0.0020	<0.0050	<0.0050	<0.010	<0.0050	<0.0050	<0.0038	<500	<0.5	<50	<50
SB-12 6ft	5/3/2022	6	<0.0020	<0.0050	<0.0050	<0.010	<0.0050	<0.0050	<0.0038	<500	<0.5	170	<50
SB-13 10ft	5/3/2022	10	<0.0020	<0.0050	<0.0050	<0.010	<0.0050	<0.0050	<0.0038	<500	<0.5	<50	<50
SB-14 6ft	5/3/2022	6	<0.0020	<0.0050	<0.0050	<0.010	<0.0050	<0.0050	<0.0038	<500	<0.5	<50	<50
SB-15 10ft	5/3/2022	10	<0.0020	<0.0050	<0.0050	<0.010	<0.0050	<0.0050	<0.0038	<500	<0.5	<50	<50
B01@7.0'	1/13/2023	7	<0.0020	<0.0050	<0.0050	<0.010	<0.0050	<0.0050	<0.0038	<500	<0.50	<50	<50
NW01@6.0'	1/13/2023	6	<0.0020	<0.0050	<0.0050	<0.010	<0.0050	<0.0050	<0.0038	<500	<0.50	<50	<50
NE01@6.0'	1/13/2023	6	<0.0020	<0.0050	<0.0050	<0.010	<0.0050	<0.0050	<0.0038	<500	<0.50	<50	<50
SE01@6.0'	1/13/2023	6	<0.0020	<0.0050	<0.0050	<0.010	<0.0050	<0.0050	<0.0038	<500	<0.50	<50	<50
B02@7.0'	1/16/2023	7	<0.0020	<0.0050	<0.0050	<0.010	<0.0050	<0.0050	<0.0038	<500	<0.50	<50	<50
NW02@6.0'	1/16/2023	6	<0.0020	<0.0050	<0.0050	<0.010	<0.0050	<0.0050	<0.0038	<500	<0.50	<50	<50
SE02@6.0'	1/16/2023	6	<0.0020	<0.0050	<0.0050	<0.010	<0.0050	<0.0050	<0.0038	<500	<0.50	<50	<50
SW01@6.0'	1/16/2023	6	<0.0020	<0.0050	<0.0050	<0.010	<0.0050	<0.0050	<0.0038	<500	<0.50	<50	<50
B03@7.0'	1/17/2023	7	<0.0020	<0.0050	<0.0050	<0.010	<0.0050	<0.0050	<0.0038	<500	<0.50	<50	<50
B04@7.0'	1/17/2023	7	<0.0020	<0.0050	<0.0050	<0.010	<0.0050	<0.0050	<0.0038	<500	<0.50	<50	<50
NW03@6.0'	1/17/2023	6	<0.0020	<0.0050	<0.0050	<0.010	<0.0050	<0.0050	<0.0038	<500	<0.50	<50	<50
NW04@6.0'	1/17/2023	6	<0.0020	<0.0050	<0.0050	<0.010	<0.0050	<0.0050	<0.0038	<500	<0.50	<50	<50
NE02@6.0'	1/17/2023	6	<0.0020	<0.0050	<0.0050	<0.010	<0.0050	<0.0050	<0.0038	<500	<0.50	<50	<50
SW02@6.0'	1/17/2023	6	<0.0020	<0.0050	<0.0050	<0.010	<0.0050	<0.0050	<0.0038	<500	<0.50	<50	<50
SE03@6.0'	1/17/2023	6	<0.0020	<0.0050	<0.0050	<0.010	<0.0050	<0.0050	<0.0038	<500	<0.50	<50	<50
SE04@6.0'	1/17/2023	6	<0.0020	<0.0050	<0.0050	<0.010	<0.0050	<0.0050	<0.0038	<500	<0.50	<50	<50

1. Bold values exceed the ECMC Table 915-1 limit(s)
2. Red & blue highlighted soil analytical values indicate an exceedance of the referenced soil screening level (SSL)
3. * Indicates laboratory minimum detection limit in excess of SSL
4. ** Summation of GRO+DRO+ORO must be less than 500 mg/kg
NA - Not analyzed

= Source material characterization sample, excavated and transported off site for disposal.
 = Material excavated and transported off site for disposal.

TABLE 2
SUMMARY OF POLYCYCLIC AROMATIC HYDROCARBON SOIL CHEMISTRY DATA
NOBLE 100322
BEELER 22-12, 13 TANK BATTERY, WELD COUNTY, COLORADO
REM # 21781

Sample ID	Sample Date	Depth (ft)	Acenaphthene (mg/kg)	Anthracene (mg/kg)	Benzo (a) Anthracene (mg/kg)	Benzo (a) Pyrene (mg/kg)	Benzo (b) Fluoranthene (mg/kg)	Benzo (k) Fluoranthene (mg/kg)	Chrysene (mg/kg)	Dibenzo (a,h) Anthracene (mg/kg)	Fluoranthene (mg/kg)	Fluorene (mg/kg)	Indeno (1,2,3- cd) Pyrene (mg/kg)	Pyrene (mg/kg)	1-Methyl - Naphthalene (mg/kg)	2-Methyl- Naphthalene (mg/kg)
ECMC Table 915-1 Limits (Residential SSL)			360	1800	1.1	0.11	1.1	11	110	0.11	240	240	1.1	180	18	24
ECMC Table 915-1 Limits (Protection of Groundwater SSL)			0.55	5.8	0.011	0.24	0.3	2.9	9	0.096	8.9	0.54	0.98	1.3	0.006	0.019
AST01@1.0'	3/2/2022	1	<0.005	<0.005	<0.005	<0.005	<0.005	<0.005	0.0191	<0.005	<0.005	0.0608	<0.005	<0.005	0.554	1.33
B01@7.0'	3/3/2022	7	<0.005	<0.005	<0.005	<0.005	<0.005	<0.005	0.00686	<0.005	<0.005	0.015	<0.005	<0.005	0.0571	0.152
S01@5.5'	3/3/2022	5.5	<0.005	<0.005	<0.005	<0.005	<0.005	<0.005	<0.005	<0.005	<0.005	<0.005	<0.005	<0.005	<0.005	<0.005
SEP01@6.0"	3/2/2022	0.5	<0.005	<0.005	<0.005	<0.005	<0.005	<0.005	<0.005	<0.005	<0.005	0.0282	<0.005	<0.005	0.215	0.512
SEP02@6.0"	3/2/2022	0.5	<0.005	<0.005	<0.005	<0.005	<0.005	<0.005	<0.005	<0.005	<0.005	<0.005	<0.005	<0.005	<0.005	<0.005
SB-1 13ft	5/3/2022	13	<0.00500	<0.00500	<0.00500	<0.00500	<0.00500	<0.00500	<0.00500	<0.00500	<0.00500	<0.00500	<0.00500	<0.00500	<0.00500	<0.00500
SB-2 12ft	5/3/2022	12	<0.00500	<0.00500	<0.00500	<0.00500	<0.00500	<0.00500	<0.00500	<0.00500	<0.00500	<0.00500	<0.00500	<0.00500	<0.00500	<0.00500
SB-3 12ft	5/3/2022	12	<0.00500	<0.00500	<0.00500	<0.00500	<0.00500	<0.00500	<0.00500	<0.00500	<0.00500	<0.00500	<0.00500	<0.00500	<0.00500	<0.00500
SB-4 12ft	5/3/2022	12	<0.00500	<0.00500	<0.00500	<0.00500	<0.00500	<0.00500	<0.00500	<0.00500	<0.00500	<0.00500	<0.00500	<0.00500	<0.00500	<0.00500
SB-5 12ft	5/3/2022	12	<0.00500	<0.00500	<0.00500	<0.00500	<0.00500	<0.00500	<0.00500	<0.00500	<0.00500	<0.00500	<0.00500	<0.00500	<0.00500	<0.00500
SB-6 12ft	5/3/2022	12	<0.00500	<0.00500	<0.00500	<0.00500	<0.00500	<0.00500	<0.00500	<0.00500	<0.00500	<0.00500	<0.00500	<0.00500	<0.00500	<0.00500
SB-7 12ft	5/3/2022	12	<0.00500	<0.00500	<0.00500	<0.00500	<0.00500	<0.00500	<0.00500	<0.00500	<0.00500	<0.00500	<0.00500	<0.00500	<0.00500	<0.00500
SB-8 10ft	5/3/2022	10	<0.00500	<0.00500	<0.00500	<0.00500	<0.00500	<0.00500	<0.00500	<0.00500	<0.00500	<0.00500	<0.00500	<0.00500	<0.00500	<0.00500
SB-9 7ft	5/3/2022	7	<0.00500	<0.00500	<0.00500	<0.00500	<0.00500	<0.00500	<0.00500	<0.00500	<0.00500	0.00647	<0.00500	<0.00500	0.0671	<0.00500
SB-10 11ft	5/3/2022	11	<0.00500	<0.00500	<0.00500	<0.00500	<0.00500	<0.00500	<0.00500	<0.00500	<0.00500	<0.00500	<0.00500	<0.00500	<0.00500	<0.00500
SB-11 6ft	5/3/2022	6	<0.00500	<0.00500	<0.00500	<0.00500	<0.00500	<0.00500	0.032	<0.00500	<0.00500	<0.00500	<0.00500	0.013	<0.00500	<0.00500
SB-12 6ft	5/3/2022	6	<0.00500	<0.00500	<0.00500	<0.00500	<0.00500	<0.00500	0.0236	<0.00500	<0.00500	<0.00500	<0.00500	0.00807	0.0247	<0.00500
SB-13 10ft	5/3/2022	10	<0.00500	<0.00500	<0.00500	<0.00500	<0.00500	<0.00500	<0.00500	<0.00500	<0.00500	<0.00500	<0.00500	<0.00500	<0.00500	<0.00500
SB-14 6ft	5/3/2022	6	<0.00500	<0.00500	<0.00500	<0.00500	<0.00500	<0.00500	<0.00500	<0.00500	<0.00500	<0.00500	<0.00500	<0.00500	<0.00500	<0.00500
SB-15 10ft	5/3/2022	10	<0.00500	<0.00500	<0.00500	<0.00500	<0.00500	<0.00500	<0.00500	<0.00500	<0.00500	<0.00500	<0.00500	<0.00500	<0.00500	<0.00500
B01@7.0'	1/13/2023	7	<0.00500	<0.00500	<0.00500	<0.00500	<0.00500	<0.00500	<0.00500	<0.00500	<0.00500	<0.00500	<0.00500	<0.00500	<0.00500	<0.00500
NW01@6.0'	1/13/2023	6	<0.00500	<0.00500	<0.00500	<0.00500	<0.00500	<0.00500	<0.00500	<0.00500	<0.00500	<0.00500	<0.00500	<0.00500	<0.00500	<0.00500
NE01@6.0'	1/13/2023	6	<0.00500	<0.00500	<0.00500	<0.00500	<0.00500	<0.00500	<0.00500	<0.00500	<0.00500	<0.00500	<0.00500	<0.00500	<0.00500	<0.00500
SE01@6.0'	1/13/2023	6	<0.00500	<0.00500	<0.00500	<0.00500	<0.00500	<0.00500	<0.00500	<0.00500	<0.00500	<0.00500	<0.00500	<0.00500	<0.00500	<0.00500
B02@7.0'	1/16/2023	7	<0.00500	<0.00500	<0.00500	<0.00500	<0.00500	<0.00500	<0.00500	<0.00500	<0.00500	<0.00500	<0.00500	<0.00500	<0.00500	<0.00500
NW02@6.0'	1/16/2023	6	<0.00500	<0.00500	<0.00500	<0.00500	<0.00500	<0.00500	<0.00500	<0.00500	<0.00500	<0.00500	<0.00500	<0.00500	<0.00500	<0.00500
SE02@6.0'	1/16/2023	6	<0.00500	<0.00500	<0.00500	<0.00500	<0.00500	<0.00500	<0.00500	<0.00500	<0.00500	<0.00500	<0.00500	<0.00500	<0.00500	<0.00500
SW01@6.0'	1/16/2023	6	<0.00500	<0.00500	<0.00500	<0.00500	<0.00500	<0.00500	<0.00500	<0.00500	<0.00500	<0.00500	<0.00500	<0.00500	<0.00500	<0.00500
B03@7.0'	1/17/2023	7	<0.00500	<0.00500	<0.00500	<0.00500	<0.00500	<0.00500	<0.00500	<0.00500	<0.00500	<0.00500	<0.00500	<0.00500	<0.00500	<0.00500
B04@7.0'	1/17/2023	7	<0.00500	<0.00500	<0.00500	<0.00500	<0.00500	<0.00500	<0.00500	<0.00500	<0.00500	<0.00500	<0.00500	<0.00500	<0.00500	<0.00500
NW03@6.0'	1/17/2023	6	<0.00500	<0.00500	<0.00500	<0.00500	<0.00500	<0.00500	<0.00500	<0.00500	<0.00500	<0.00500	<0.00500	<0.00500	<0.00500	<0.00500
NW04@6.0'	1/17/2023	6	<0.00500	<0.00500	<0.00500	<0.00500	<0.00500	<0.00500	<0.00500	<0.00500	<0.00500	<0.00500	<0.00500	<0.00500	<0.00500	<0.00500
NE02@6.0'	1/17/2023	6	<0.00500	<0.00500	<0.00500	<0.00500	<0.00500	<0.00500	<0.00500	<0.00500	<0.00500	<0.00500	<0.00500	<0.00500	<0.00500	<0.00500
SW02@6.0'	1/17/2023	6	<0.00500	<0.00500	<0.00500	<0.00500	<0.00500	<0.00500	<0.00500	<0.00500	<0.00500	<0.00500	<0.00500	<0.00500	<0.00500	<0.00500
SE03@6.0'	1/17/2023	6	<0.00500	<0.00500	<0.00500	<0.00500	<0.00500	<0.00500	<0.00500	<0.00500	<0.00500	<0.00500	<0.00500	<0.00500	<0.00500	<0.00500
SE04@6.0'	1/17/2023	6	<0.00500	<0.00500	<0.00500	<0.00500	<0.00500	<0.00500	<0.00500	<0.00500	<0.00500	<0.00500	<0.00500	<0.00500	<0.00500	<0.00500

1. Bold values exceed the ECMC Table 915-1 limit(s)
2. Red & blue highlighted soil analytical values indicate an exceedance of the referenced soil screening level (SSL)
3. * Indicates laboratory minimum detection limit in excess of SSL

NA - Not analyzed

= Source material characterization sample, excavated and transported off site for disposal.

= Material excavated and transported off site for disposal.

TABLE 3
SUMMARY OF SOIL SUITABILITY FOR RECLAMATION
NOBLE 100322
BEELER 22-12, 13 TANK BATTERY, WELD COUNTY, COLORADO
REM # 21781

Sample ID	Sample Date	Depth (ft)	pH (Standard Units)	EC (mmhos/cm)	SAR (Standard Units)	Boron (mg/L)
ECMC Table 915-1 Soil Suitability Limits			6 - 8.3	<4	<6	2
AST01@1.0'	3/2/2022	1	8.06	0.914	2.89	0.165
B01@7.0'	3/3/2022	7	7.78	1.54	8.7	0.155
S01@5.5'	3/3/2022	5.5	8.27	0.317	0.127	0.0724
SEP01@6.0"	3/2/2022	0.5	8.59	0.834	5.28	0.451
SEP02@6.0"	3/2/2022	0.5	8.52	0.589	1.51	0.138
B01@7.0'	1/13/2023	7	7.68	1.73	0.478	0.0637
NW01@6.0'	1/13/2023	6	7.98	0.279	0.0349	0.0327
NE01@6.0'	1/13/2023	6	7.82	0.407	0.2	0.0912
SE01@6.0'	1/13/2023	6	7.75	0.524	0.0774	0.0855
B02@7.0'	1/16/2023	7	8.72	1.25	23.9	0.689
NW02@6.0'	1/16/2023	6	7.56	2.87	0.296	0.222
SE02@6.0'	1/16/2023	6	7.56	1.34	0.232	0.229
SW01@6.0'	1/16/2023	6	7.49	2.7	0.243	0.083
B03@7.0'	1/17/2023	7	7.88	1.73	2.67	0.218
B04@7.0'	1/17/2023	7	7.49	3.28	0.954	0.308
NW03@6.0'	1/17/2023	6	7.74	1.64	0.826	0.0645
NW04@6.0'	1/17/2023	6	7.55	3.66	0.441	0.188
NE02@6.0'	1/17/2023	6	7.55	3.89	0.223	0.183
SW02@6.0'	1/17/2023	6	7.64	3.39	2.6	0.525
SE03@6.0'	1/17/2023	6	7.52	3.43	0.293	0.201
SE04@6.0'	1/17/2023	6	7.96	0.769	0.291	0.464
B02(2) 7FT	09/05/2023	7	7.67	NA	0.187	NA
B02 8FT	09/05/2023	8	7.74	NA	0.544	NA
B02 10FT	09/05/2023	10	8.41	NA	3.6	NA

TABLE 3
SUMMARY OF SOIL SUITABILITY FOR RECLAMATION
NOBLE 100322
BEELER 22-12, 13 TANK BATTERY, WELD COUNTY, COLORADO
REM # 21781

Sample ID	Sample Date	Depth (ft)	pH (Standard Units)	EC (mmhos/cm)	SAR (Standard Units)	Boron (mg/L)
ECMC Table 915-1 Soil Suitability Limits			6 - 8.3	<4	<6	2
B02 N 7FT	09/05/2023	7	7.73	NA	0.313	NA
B02 E 7FT	09/05/2023	7	8.02	NA	0.236	NA
B02 S 7FT	09/05/2023	7	7.68	NA	0.375	NA
B02 W 7FT	09/05/2023	7	7.71	NA	0.151	NA
BKG01@6.0"	3/2/2022	0.5	7.93	0.32	0.0541	0.205
BKG01@7.0'	1/16/2023	7	7.76	4.98	2.72	0.558
BKG-2 6FT	09/05/2023	6	8.7	NA	4.98	NA
BKG-2 7FT	09/05/2023	7	8.16	NA	4.58	NA
BKG-3 6FT	09/05/2023	6	8.12	NA	3.38	NA
BKG-3 7FT	09/05/2023	7	7.68	NA	0.261	NA
BKG-4 6FT	09/05/2023	6	8.07	NA	0.227	NA
BKG-4 7FT	09/05/2023	7	7.68	NA	0.112	NA
BKG-5 7FT	09/05/2023	7	8.23	NA	2.67	NA
BKG-6 6FT	09/05/2023	6	7.76	NA	1.95	NA
BKG-6 7FT	09/05/2023	7	7.91	NA	2.71	NA
Maximum Root Background Concentration (0 - 3 ft)			7.93	0.32	0.0541	0.205
Average Root Background Concentration (0 - 3 ft)			7.93	0.32	0.0541	0.205
Maximum Background Concentration			8.7	4.98	4.98	0.558
Average Background Concentration			8.00	2.65	2.15	0.38

1. Bold faced values exceed the ECMC Table 915-1 limit(s)

2. Blue highlighted soil analytical values indicate a regulatory exceedance

NA - Not analyzed



= Source material characterization sample, excavated and transported off site for disposal.

= Material excavated and transported off site for disposal.

= Resampled locations which previously exceeded ECMC Tables 915-1 SSLs but are now in compliance

TABLE 4
SUMMARY OF METALS IN SOIL CHEMISTRY DATA
NOBLE 100322
BEELER 22-12, 13 TANK BATTERY, WELD COUNTY, COLORADO
REM # 21781

Sample ID	Sample Date	Depth (ft)	Arsenic (mg/kg)	Barium (mg/kg)	Cadmium (mg/kg)	Chromium (VI) (mg/kg)	Copper (mg/kg)	Lead (mg/kg)	Nickel (mg/kg)	Selenium (mg/kg)	Silver (mg/kg)	Zinc (mg/kg)
ECMC Table 915-1 Limits (Residential SSL)			0.68	15000	71	0.3	3100	400	1500	390	390	23000
ECMC Table 915-1 Limits (Protection of Groundwater SSL)			0.29	82	0.38	0.00067	46	14	26	0.26	0.8	370
B01@7.0'	1/13/2023	7	1.48	16.7	0.0874	<0.30	5.13	6.18	6.29	0.85	0.0228	37.1
NW01@6.0'	1/13/2023	6	2.55	49.9	0.0498	<0.30	6.69	6.49	7.32	0.849	0.0366	35.4
NE01@6.0'	1/13/2023	6	2.79	43.4	0.0511	<0.30	4.38	6.16	6.49	1.07	0.0377	31.8
SE01@6.0'	1/13/2023	6	2.03	84.5	0.0379	<0.30	4.77	6.04	6.33	0.793	0.029	38.2
B02@7.0'	1/16/2023	7	1.69	18.6	0.0256	<0.30	5.22	5.9	6.54	0.481	0.0174	37.1
NW02@6.0'	1/16/2023	6	2.31	47.4	0.0364	<0.30	4.99	5.92	6.69	0.659	0.0183	33.1
SE02@6.0'	1/16/2023	6	3.38	72.7	0.0358	<0.30	4.03	5.12	5.79	0.461	0.023	30.1
SW01@6.0'	1/16/2023	6	2.77	36.1	0.0383	<0.30	4.41	5.48	6.5	0.527	0.0214	28.9
B03@7.0'	1/17/2023	7	3.7	9.9	0.0951	<0.30	4.28	6.42	4.69	<0.312	0.0125	22.2
B04@7.0'	1/17/2023	7	10.1	19.6	0.153	<0.30	6.88	10.2	6.83	<0.319	0.0339	31.4
NW03@6.0'	1/17/2023	6	5.34	107	0.139	<0.30	4.03	8.73	5.83	<0.295	0.0322	22.9
NW04@6.0'	1/17/2023	6	3.92	14.3	0.0956	<0.30	4.1	6.28	5.38	<0.311	0.0167	27.1
NE02@6.0'	1/17/2023	6	5.77	37.2	0.115	<0.30	5.75	8.76	5.05	<0.313	0.0304	36.3
SW02@6.0'	1/17/2023	6	11.9	34.3	0.123	<0.30	6.75	9.53	6.6	<0.325	0.0295	27.6
SE03@6.0'	1/17/2023	6	14.7	44.6	0.166	<0.30	11.1	15.3	8	<0.317	0.0332	36.8
SE04@6.0'	1/17/2023	6	9.08	59.5	0.162	<0.30	7.87	11.6	6.67	0.22	0.0407	32.8
B02 (2) 7FT	09/05/2023	7	0.56	44.7	<0.200	<0.30	0.918	4.48	1.51	<0.260	0.02	7.16
SE03 (2) 6FT	09/05/2023	6	1.42	152	<0.200	<0.30	1.97	7.23	2.93	<0.260	0.0264	10.8
BKG01@7.0'	1/16/2023	7	6.81	123	0.128	<0.30	11.4	6.14	47.7	0.615	0.0275	30.4
BKG-2 6FT	09/05/2023	6	1.13	22.1	<0.200	<0.30	1.35	5.81	2.23	<0.260	0.0242	10.1
BKG-2 7FT	09/05/2023	7	1.03	23.4	<0.200	<0.30	1.65	6.12	2.28	<0.260	<0.0200	11.2
BKG-3 6FT	09/05/2023	6	1.11	47.4	<0.200	<0.30	2.1	7.66	2.47	<0.260	0.0262	12.7
BKG-3 7FT	09/05/2023	7	0.696	39.6	<0.200	<0.30	1.28	5.83	1.92	<0.260	<0.0200	9.34
BKG-4 6FT	09/05/2023	6	1.36	204	<0.200	<0.30	2.09	7.41	3.05	<0.260	0.0295	10.2
BKG-4 7FT	09/05/2023	7	1.22	94.4	<0.200	<0.30	1.77	6.71	2.62	<0.260	<0.0200	11.1
BKG-5 7FT	09/05/2023	7	1.27	85.1	<0.200	<0.30	1.71	7.91	2.69	<0.260	0.0289	11.4
BKG-6 6FT	09/05/2023	6	1.47	153	<0.200	<0.30	1.99	6.64	3.13	<0.260	0.0311	9.19
BKG-6 7FT	09/05/2023	7	1.81	114	<0.200	<0.30	1.75	6.06	2.75	<0.260	0.0334	9.16
Maximum Root Zone Background Concentration (0 - 3 ft)			NA	NA	NA	NA	NA	NA	NA	NA	NA	NA
125% Average Root Zone Background Concentration (0 - 3 ft)			NA	NA	NA	NA	NA	NA	NA	NA	NA	NA
Maximum Background Concentration			6.81	204	NA	NA	NA	NA	47.7	0.615	NA	NA
125% Average Background Concentration			2.24	113	NA	NA	NA	NA	8.86	0.546	NA	NA

1. Bold values exceed the ECMC Table 915-1 limit(s)

2. Red & blue highlighted soil analytical values indicate an exceedance of the referenced soil screening level (SSL)

* Indicates laboratory minimum detection limit in excess of SSL

NA - Not analyzed

= Source material characterization sample, excavated and transported off site for disposal.

= Material excavated and transported off site for disposal.

= Resampled locations which previously exceeded ECMC Tables 915-1 SSLs but are now in compliance

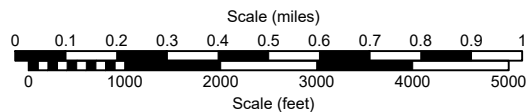
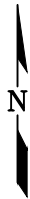
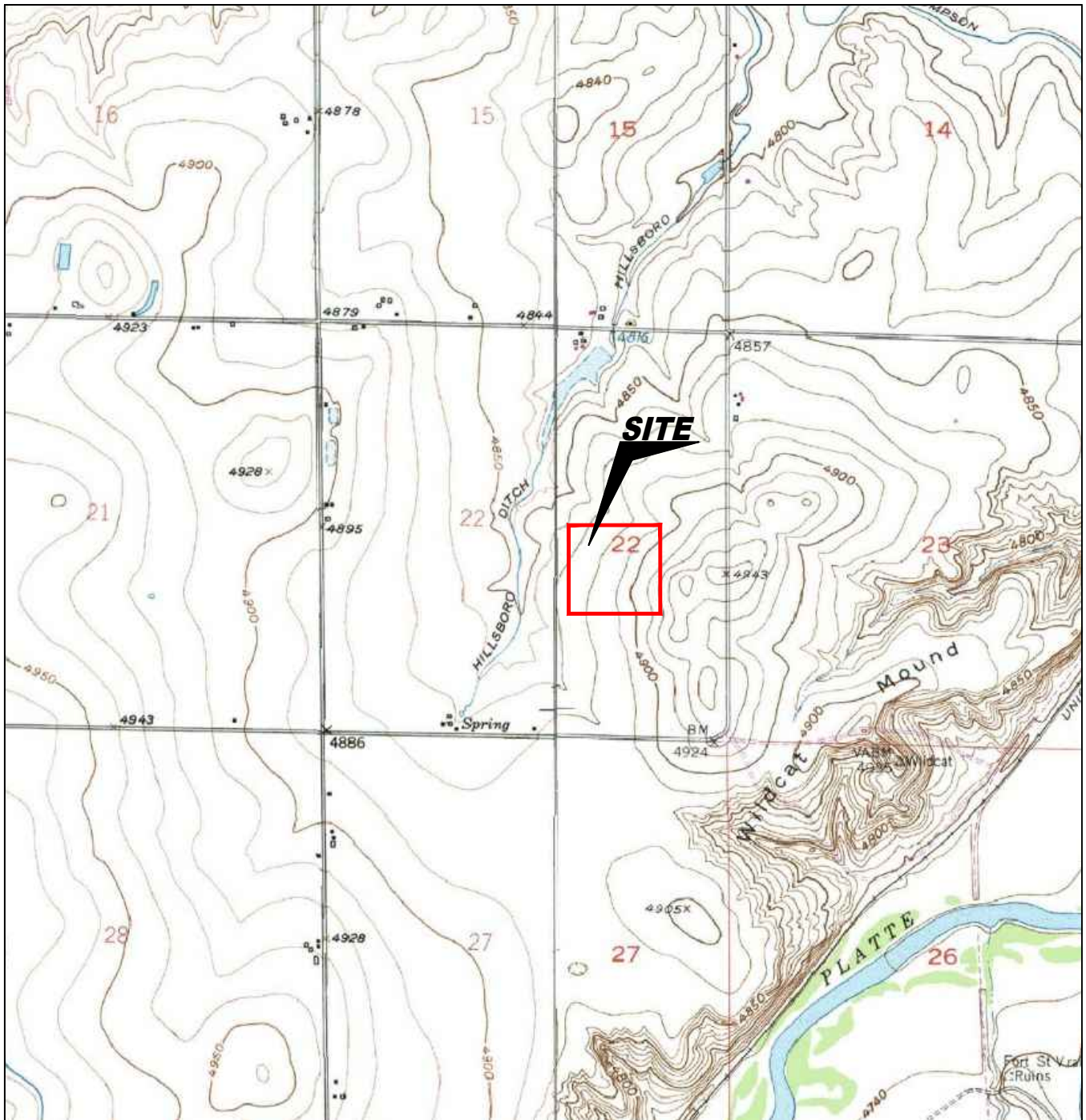
TABLE 5
SUMMARY OF GROUNDWATER ELEVATION DATA AND ORGANIC CHEMISTRY DATA
NOBLE 100322
BEELER 22-12, 13 TANK BATTERY, WELD COUNTY, COLORADO
REM # 21781

Sample ID	Sample Date	Benzene (µg/L)	Toluene (µg/L)	Ethyl-Benzene (µg/L)	Xylenes (µg/L)	Naphthalene (µg/L)	1,2,4- Trimethyl- Benzene (µg/L)	1,3,5- Trimethyl- Benzene (µg/L)	TOC Elevation (ft)	Depth to Groundwater Below TOC (ft)	Groundwater Elevation (ft)	LNAPL Thickness (ft)
ECMC Table 915-1 Limits		5.0	560	700	1400	140	67	67				
SB-7	05/03/22	DRY	DRY	DRY	DRY	DRY	DRY	DRY	100.00	DRY	DRY	NP
	05/26/22	DRY	DRY	DRY	DRY	DRY	DRY	DRY		DRY	DRY	NP
	06/30/22	DRY	DRY	DRY	DRY	DRY	DRY	DRY		DRY	DRY	NP
	01/13/23	DRY	DRY	DRY	DRY	DRY	DRY	DRY		DRY	DRY	NP

1. Bold values exceed the ECMC limit(s)

2. Red highlighted groundwater analytical values indicate a regulatory exceedance

NP - No measurable LNAPL, NA - Not Analyzed, NL - No Limit, INA - Inaccessible, IW - Insufficient Water, DES - Destroyed



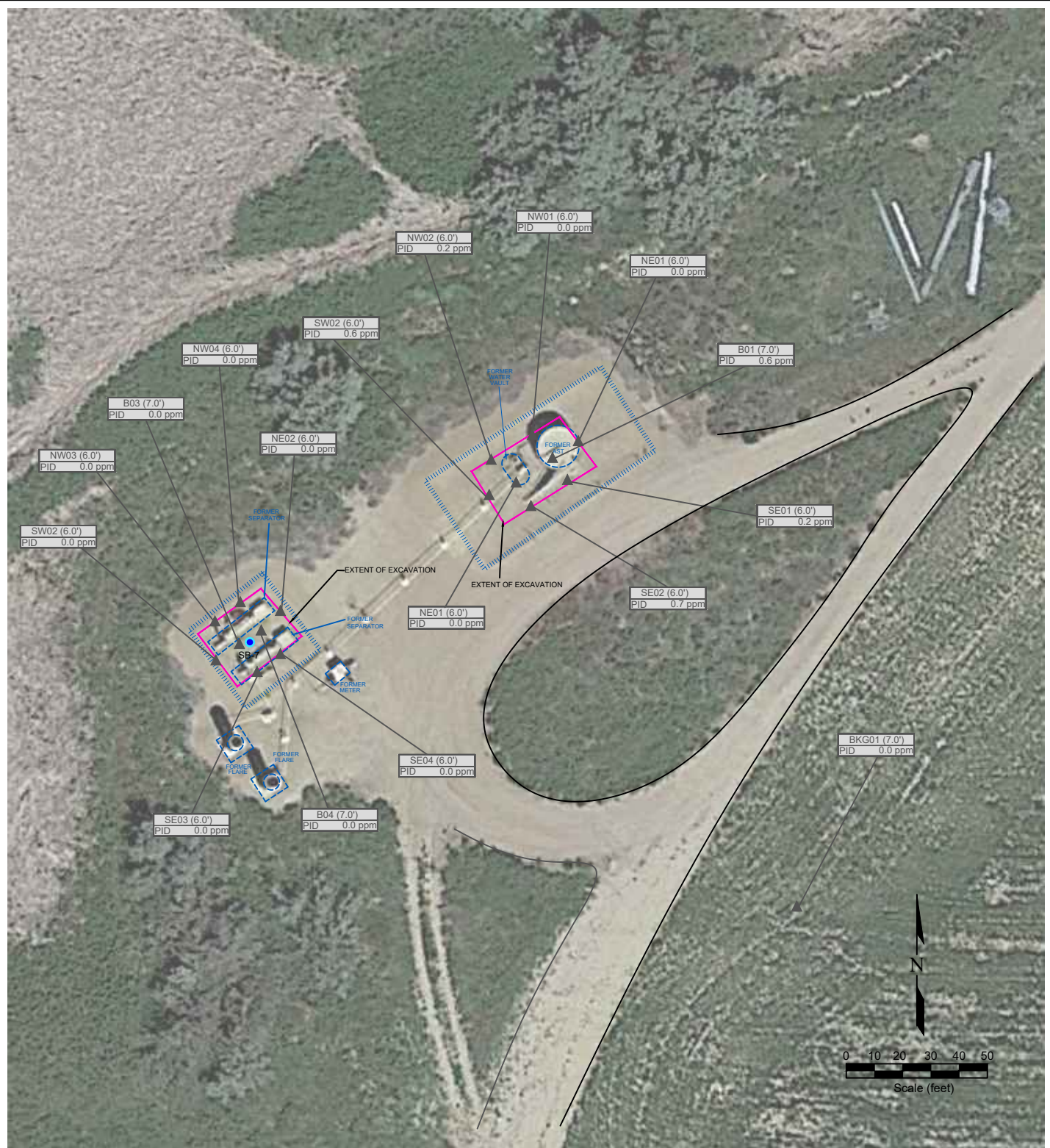
USGS 7.5 MINUTE SERIES (TOPOGRAPHIC)

Figure 1
SITE LOCATION MAP

Noble Energy, Inc. ~ Beeler 22-12, 13
 NWNE Sec. 22, T4N, R67W, 6th PM
 Weld County, Colorado
 40.303521°, -104.873342°

Project # C022-013	API #	Facility # 331032
Date 2/25/23	Remediation # 21781	Filename 22013T





LEGEND

 ABOVE GROUND STORAGE TANK
 FORMER FORMER FACILITY
 CONTAINMENT BERM
 EXTENT OF EXCAVATION

▲ PID READING LOCATION
 ● Former Monitoring Well

AST01 (1.0')
PID = 483.4 ppm
 PHOTO IONIZATION DETECTION READING (ppm)
 PID = photo ionization detection / PPM = parts per million

**Figure 2
SITE MAP**

Noble Energy, Inc. ~ Beeler 22-12, 13
 NWNE Sec. 22, T4N, R67W, 6th PM
 Weld County, Colorado
 40.303662°, -104.873344°

Project No. C022-013	API #	Facility # 331032
Date 2/25/23	Remediation # 21781	Filename 22013Q1



