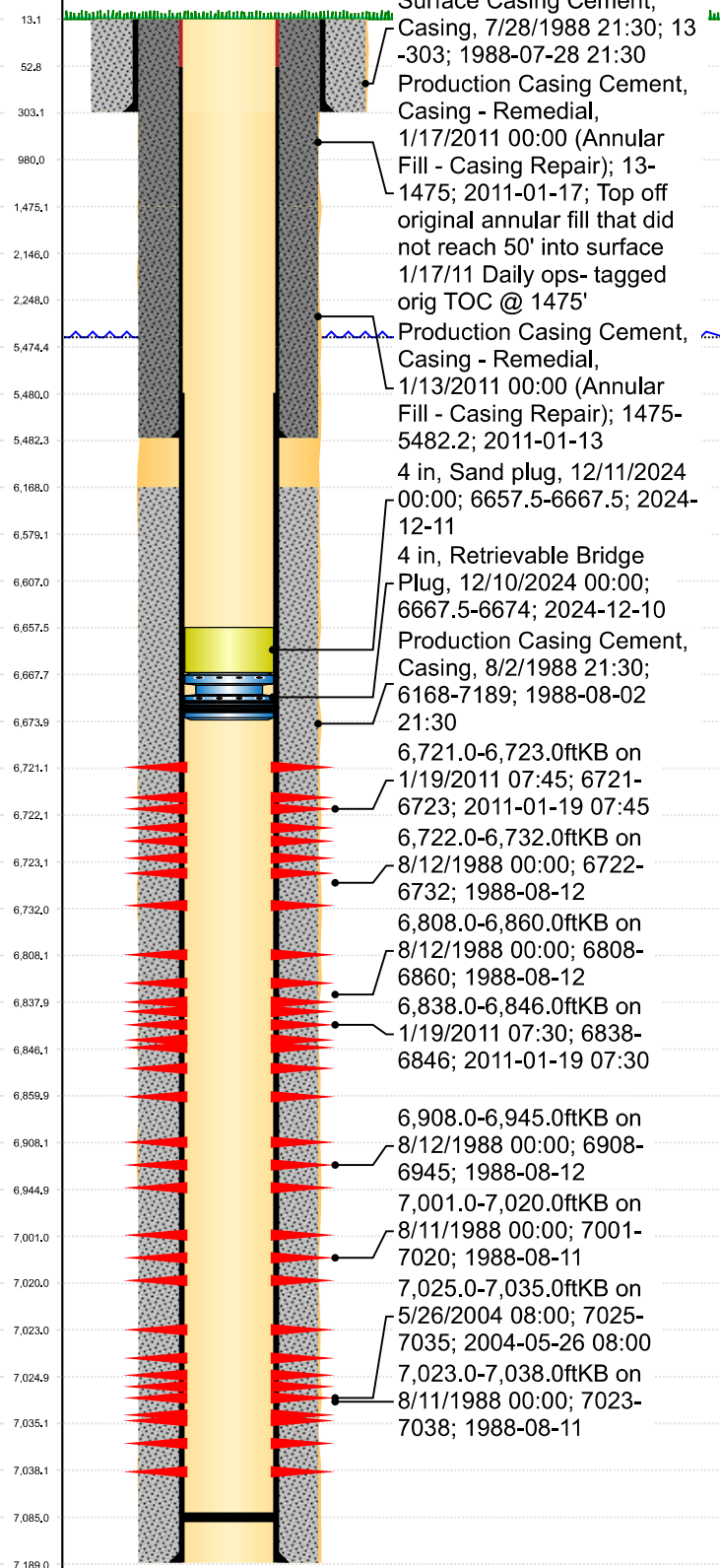




Original Hole [Land]

MD  
(ftK  
B)

Vertical schematic (actual)



Surface UWI 0512313979	Business Unit Rockies	Gov Auth Dist Evans	Prod Tree Loc Land	
Orig. KB to Grnd (ft) 13.00	Original Spud Date 7/28/1988	Abandon Date	Well Sub-Status TA	High... N

Comment	No Forms 5A for Codell and Niobrara refracs submitted to state. Sundry notice for csg repair but no Form 5 submitted to state. ??? Well on LPDCE Formation Tops spreadsheet but no depths entered as of 10/28/24. Entered formation depths from 1988 Form 5. JH 10/28/24
---------	--

Surface Location (Congressional)

Qtr 3 NE	Qtr 4 SW	Section 16	Twnshp 6	Twnsh... N	Range 64	Rng E/... W	Latitude (°) 40.48414	Longitude (°) -104.55678
-------------	-------------	---------------	-------------	---------------	-------------	----------------	--------------------------	-----------------------------

[illegible]

Section Des	Hole Size (in)	Top Depth (ftKB)	Btm Depth (ftKB)
Surface	12 1/4	13.0	303.0
Production	7 7/8	303.0	7,189.0

## Casing Strings

Csg Des	Run Date	OD (in)	Wt/Len (lb/ft)	Grade	Top Depth (MD) (ftKB)	Set Depth (MD) (ftKB)
Surface	7/28/1988	8 5/8	24.00		13	303
Production Casing	1/8/2011	4 1/2			13	5482.2
Production	8/2/1988	4 1/2	11.60		13	7189

## Cement

Des	Start Date	Top (ftKB)	Btm (ftKB)
Surface Casing Cement	7/28/1988	13.0	303.0
Production Casing Cement	8/2/1988	6,168.0	7,189.0
Annular Fill - Casing Repair	1/13/2011	1,475.0	5,482.2
Annular Fill - Casing Repair	1/17/2011	13.0	1,475.0

### Zone Statuses

Zone Name	Status Date	Status	Fluid Type	Job	Prod Method
Niobrara	12/11/2024	Closed		Frac Hit Prevention, 12/6/2024 00:00	
Codell	12/11/2024	Closed		Frac Hit Prevention, 12/6/2024 00:00	

Perforation Data	
1	12.75
2	12.75
3	12.75
4	12.75
5	12.75
6	12.75
7	12.75
8	12.75
9	12.75
10	12.75
11	12.75
12	12.75
13	12.75
14	12.75
15	12.75
16	12.75
17	12.75
18	12.75
19	12.75
20	12.75
21	12.75
22	12.75
23	12.75
24	12.75
25	12.75
26	12.75
27	12.75
28	12.75
29	12.75
30	12.75
31	12.75
32	12.75
33	12.75
34	12.75
35	12.75
36	12.75
37	12.75
38	12.75
39	12.75
40	12.75
41	12.75
42	12.75
43	12.75
44	12.75
45	12.75
46	12.75
47	12.75
48	12.75
49	12.75
50	12.75
51	12.75
52	12.75
53	12.75
54	12.75
55	12.75
56	12.75
57	12.75
58	12.75
59	12.75
60	12.75
61	12.75
62	12.75
63	12.75
64	12.75
65	12.75
66	12.75
67	12.75
68	12.75
69	12.75
70	12.75
71	12.75
72	12.75
73	12.75
74	12.75
75	12.75
76	12.75
77	12.75
78	12.75
79	12.75
80	12.75
81	12.75
82	12.75
83	12.75
84	12.75
85	12.75
86	12.75
87	12.75
88	12.75
89	12.75
90	12.75
91	12.75
92	12.75
93	12.75
94	12.75
95	12.75
96	12.75
97	12.75
98	12.75
99	12.75
100	12.75

Linked Zone	Explosive Type	Entered Shot Total	Top (ftKB)	Btm (ftKB)	Date
Niobrara_A, Original Hole		4	6,721.0	6,723.0	1/19/2011
Niobrara_A, Original Hole		3	6,722.0	6,732.0	8/12/1988
Niobrara_B, Original Hole		8	6,808.0	6,860.0	8/12/1988
Niobrara_B, Original Hole		16	6,838.0	6,846.0	1/19/2011
Niobrara_C, Original Hole		6	6,908.0	6,945.0	8/12/1988
Ft. Hayes, Original Hole		7	7,001.0	7,020.0	8/11/1988
Codell, Original Hole		30	7,023.0	7,038.0	8/11/1988
Codell, Original Hole		30	7,025.0	7,035.0	5/26/2004

**Stim/Frac Stage**

Zone	Start Date	Top (ftKB)	Btm (ftKB)
Codell, Original Hole	8/12/1988		
Codell, Original Hole	5/27/2004		
Niobrara, Original Hole	1/22/2011		
Niobrara, Original Hole	8/12/1988		

## Other In Hole

Run Date	Des	Make	OD (in)	Top (ftKB)	Btm (ftKB)
12/10/2024	Retrievable Bridge Plug		4	6,667.5	6,674.0
12/11/2024	Sand plug		4	6,657.5	6,667.5

## Logs

Date	Type	Depth Top (MD) (ftKB)	Btm (ftKB)
8/1/1988		3,600	7,171.0
8/1/1988	Dual Induction (DIT)	303	7,188.0
8/10/1988	Cement Bond Log	6,000	7,066.0
12/30/2010	CBL/VDL/GR/CCL	13	7,076.0
12/30/2010	CBL/VDL/GR/CCL	13	7,076.0

[illegible]

Date	Type	Com	PBTD (ftKB)
1/27/2011	Cast Iron Bridge Plug	Daily Ops comments: drilled out CIBP, chased to 7085'	7,085