



P&A Wellbore For State

Well Name: George 08N

Original Hole [Land]		Perforation Data					
MD (ftKB)	Vertical schematic (actual)	Linked Zone	Explosive Type	Entered Shot Total	Top (ftKB)	Btm (ftKB)	Date
7,662.4		Niobrara, Original Hole		4	9,412.0	9,413.0	10/7/2024
8,129.9		Niobrara, Original Hole		4	9,461.0	9,462.0	10/7/2024
8,499.0		Niobrara, Original Hole		4	9,492.0	9,493.0	10/7/2024
8,916.0		Niobrara, Original Hole		4	9,540.0	9,541.0	10/7/2024
9,268.0		Niobrara, Original Hole		4	9,588.0	9,589.0	10/7/2024
9,680.1		Niobrara, Original Hole		4	9,635.0	9,636.0	10/7/2024
10,037.1		Niobrara, Original Hole		4	9,680.0	9,681.0	10/7/2024
10,454.1		Niobrara, Original Hole		4	9,734.0	9,735.0	10/7/2024
10,824.1		Niobrara, Original Hole		4	9,764.0	9,765.0	10/6/2024
11,222.1		Niobrara, Original Hole		4	9,812.0	9,813.0	10/6/2024
11,591.9		Niobrara, Original Hole		4	9,855.0	9,856.0	10/6/2024
11,991.1		Niobrara, Original Hole		4	9,911.0	9,912.0	10/6/2024
12,360.9		Niobrara, Original Hole		4	9,957.0	9,958.0	10/6/2024
12,759.8		Niobrara, Original Hole		4	10,006.0	10,007.0	10/6/2024
13,081.0		Niobrara, Original Hole		4	10,036.0	10,037.0	10/6/2024
13,498.0		Niobrara, Original Hole		4	10,087.0	10,088.0	10/6/2024
13,850.1		Niobrara, Original Hole		4	10,132.0	10,133.0	10/6/2024
14,267.1		Niobrara, Original Hole		4	10,181.0	10,182.0	10/6/2024
14,637.1		Niobrara, Original Hole		4	10,229.0	10,230.0	10/6/2024
15,035.1		Niobrara, Original Hole		4	10,278.0	10,279.0	10/6/2024
15,404.9		Niobrara, Original Hole		4	10,309.0	10,310.0	10/6/2024
15,804.1		Niobrara, Original Hole		4	10,357.0	10,358.0	10/6/2024
16,173.9		Niobrara, Original Hole		4	10,405.0	10,406.0	10/6/2024
16,573.2		Niobrara, Original Hole		4	10,454.0	10,455.0	10/6/2024
16,941.9		Niobrara, Original Hole		4	10,502.0	10,503.0	10/6/2024
17,358.9		Niobrara, Original Hole		4	10,549.0	10,550.0	10/6/2024
17,709.0		Niobrara, Original Hole		4	10,581.0	10,582.0	10/6/2024
		Niobrara, Original Hole		4	10,629.0	10,630.0	10/6/2024
		Niobrara, Original Hole		4	10,677.0	10,678.0	10/6/2024
		Niobrara, Original Hole		4	10,726.0	10,727.0	10/6/2024
		Niobrara, Original Hole		4	10,774.0	10,775.0	10/6/2024
		Niobrara, Original Hole		4	10,823.0	10,824.0	10/6/2024
		Niobrara, Original Hole		4	10,853.0	10,854.0	10/6/2024
		Niobrara, Original Hole		4	10,901.0	10,902.0	10/6/2024
		Niobrara, Original Hole		4	10,949.0	10,950.0	10/6/2024
		Niobrara, Original Hole		4	10,998.0	10,999.0	10/6/2024
		Niobrara, Original Hole		4	11,046.0	11,047.0	10/6/2024
		Niobrara, Original Hole		4	11,093.0	11,094.0	10/6/2024
		Niobrara, Original Hole		4	11,126.0	11,127.0	10/6/2024
		Niobrara, Original Hole		4	11,174.0	11,175.0	10/6/2024
	Niobrara, Original Hole		4	11,222.0	11,223.0	10/6/2024	
	Niobrara, Original Hole		4	11,271.0	11,272.0	10/6/2024	
	Niobrara, Original Hole		4	11,315.0	11,316.0	10/6/2024	
	Niobrara, Original Hole		4	11,372.0	11,373.0	10/6/2024	
	Niobrara, Original Hole		4	11,398.0	11,399.0	10/5/2024	
	Niobrara, Original Hole		4	11,446.0	11,447.0	10/5/2024	
	Niobrara, Original Hole		4	11,494.0	11,495.0	10/5/2024	
	Niobrara, Original Hole		4	11,541.0	11,542.0	10/5/2024	
	Niobrara, Original Hole		4	11,591.0	11,592.0	10/5/2024	
	Niobrara, Original Hole		4	11,640.0	11,641.0	10/5/2024	
	Niobrara, Original Hole		4	11,670.0	11,671.0	10/5/2024	
	Niobrara, Original Hole		4	11,717.0	11,718.0	10/5/2024	
	Niobrara, Original Hole		4	11,768.0	11,769.0	10/5/2024	
	Niobrara, Original Hole		4	11,815.0	11,816.0	10/5/2024	
	Niobrara, Original Hole		4	11,863.0	11,864.0	10/5/2024	
	Niobrara, Original Hole		4	11,912.0	11,913.0	10/5/2024	
	Niobrara, Original Hole		4	11,944.0	11,945.0	10/5/2024	
	Niobrara, Original Hole		4	11,991.0	11,992.0	10/5/2024	
	Niobrara, Original Hole		4	12,039.0	12,040.0	10/5/2024	
	Niobrara, Original Hole		4	12,088.0	12,089.0	10/5/2024	



P&A Wellbore For State

Well Name: George 08N

Original Hole [Land]		Perforation Data					
MD (ftKB)	Vertical schematic (actual)	Linked Zone	Explosive Type	Entered Shot Total	Top (ftKB)	Btm (ftKB)	Date
		Niobrara, Original Hole		4	12,136.0	12,137.0	10/5/2024
		Niobrara, Original Hole		4	12,185.0	12,186.0	10/5/2024
		Niobrara, Original Hole		4	12,215.0	12,216.0	10/4/2024
		Niobrara, Original Hole		4	12,263.0	12,264.0	10/4/2024
7,662.4		Niobrara, Original Hole		4	12,311.0	12,312.0	10/4/2024
		Niobrara, Original Hole		4	12,360.0	12,361.0	10/4/2024
8,129.9		Niobrara, Original Hole		4	12,408.0	12,409.0	10/4/2024
		Niobrara, Original Hole		4	12,457.0	12,458.0	10/4/2024
8,499.0		Niobrara, Original Hole		4	12,487.0	12,488.0	10/4/2024
		Niobrara, Original Hole		4	12,535.0	12,536.0	10/4/2024
8,916.0		Niobrara, Original Hole		4	12,583.0	12,584.0	10/4/2024
		Niobrara, Original Hole		4	12,632.0	12,633.0	10/4/2024
9,268.0		Niobrara, Original Hole		4	12,680.0	12,681.0	10/4/2024
		Niobrara, Original Hole		4	12,729.0	12,730.0	10/4/2024
9,680.1		Niobrara, Original Hole		4	12,760.0	12,761.0	10/4/2024
		Niobrara, Original Hole		4	12,808.0	12,809.0	10/4/2024
10,037.1		Niobrara, Original Hole		4	12,856.0	12,857.0	10/4/2024
		Niobrara, Original Hole		4	12,905.0	12,906.0	10/4/2024
10,454.1		Niobrara, Original Hole		4	12,953.0	12,954.0	10/4/2024
		Niobrara, Original Hole		4	13,002.0	13,003.0	10/4/2024
10,824.1		Niobrara, Original Hole		4	13,032.0	13,033.0	10/4/2024
		Niobrara, Original Hole		4	13,080.0	13,081.0	10/4/2024
11,222.1		Niobrara, Original Hole		4	13,128.0	13,129.0	10/4/2024
		Niobrara, Original Hole		4	13,177.0	13,178.0	10/4/2024
11,591.9		Niobrara, Original Hole		4	13,225.0	13,226.0	10/4/2024
		Niobrara, Original Hole		4	13,274.0	13,275.0	10/4/2024
11,991.1		Niobrara, Original Hole		4	13,305.0	13,306.0	10/4/2024
		Niobrara, Original Hole		4	13,353.0	13,354.0	10/4/2024
12,360.9		Niobrara, Original Hole		4	13,401.0	13,402.0	10/4/2024
		Niobrara, Original Hole		4	13,450.0	13,451.0	10/4/2024
12,759.8		Niobrara, Original Hole		4	13,498.0	13,499.0	10/4/2024
		Niobrara, Original Hole		4	13,547.0	13,548.0	10/4/2024
13,081.0		Niobrara, Original Hole		4	13,577.0	13,578.0	10/3/2024
		Niobrara, Original Hole		4	13,625.0	13,626.0	10/3/2024
13,498.0		Niobrara, Original Hole		4	13,673.0	13,674.0	10/3/2024
		Niobrara, Original Hole		4	13,722.0	13,723.0	10/3/2024
13,850.1		Niobrara, Original Hole		4	13,770.0	13,771.0	10/3/2024
		Niobrara, Original Hole		4	13,818.0	13,819.0	10/3/2024
14,267.1		Niobrara, Original Hole		4	13,849.0	13,850.0	10/3/2024
		Niobrara, Original Hole		4	13,897.0	13,898.0	10/3/2024
14,637.1		Niobrara, Original Hole		4	13,945.0	13,946.0	10/3/2024
		Niobrara, Original Hole		4	13,994.0	13,995.0	10/3/2024
15,035.1		Niobrara, Original Hole		4	14,047.0	14,048.0	10/3/2024
		Niobrara, Original Hole		4	14,091.0	14,092.0	10/3/2024
15,404.9		Niobrara, Original Hole		4	14,122.0	14,123.0	10/3/2024
		Niobrara, Original Hole		4	14,170.0	14,171.0	10/3/2024
15,804.1		Niobrara, Original Hole		4	14,222.0	14,223.0	10/3/2024
		Niobrara, Original Hole		4	14,267.0	14,268.0	10/3/2024
16,173.9		Niobrara, Original Hole		4	14,315.0	14,316.0	10/3/2024
		Niobrara, Original Hole		4	14,364.0	14,365.0	10/3/2024
16,573.2		Niobrara, Original Hole		4	14,392.0	14,393.0	10/3/2024
		Niobrara, Original Hole		4	14,443.0	14,444.0	10/3/2024
16,941.9		Niobrara, Original Hole		4	14,490.0	14,491.0	10/3/2024
		Niobrara, Original Hole		4	14,539.0	14,540.0	10/3/2024
17,358.9		Niobrara, Original Hole		4	14,587.0	14,588.0	10/3/2024
		Niobrara, Original Hole		4	14,636.0	14,637.0	10/3/2024
17,709.0		Niobrara, Original Hole		4	14,666.0	14,667.0	10/2/2024
		Niobrara, Original Hole		4	14,714.0	14,715.0	10/2/2024
		Niobrara, Original Hole		4	14,762.0	14,763.0	10/2/2024
		Niobrara, Original Hole		4	14,811.0	14,812.0	10/2/2024



P&A Wellbore For State

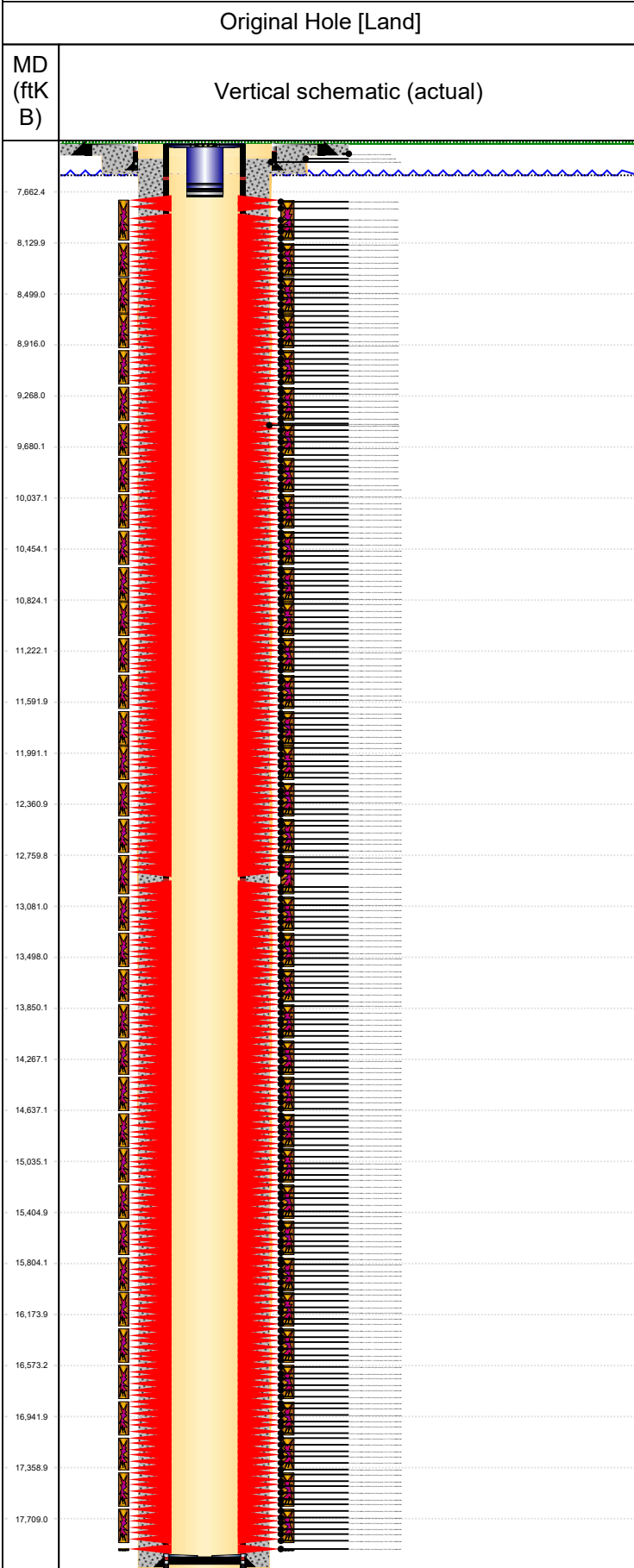
Well Name: George 08N

Original Hole [Land]		Perforation Data						
MD (ftKB)	Vertical schematic (actual)	Linked Zone	Explosive Type	Entered Shot Total	Top (ftKB)	Btm (ftKB)	Date	
		Niobrara, Original Hole		4	14,859.0	14,860.0	10/2/2024	
		Niobrara, Original Hole		4	14,908.0	14,909.0	10/2/2024	
		Niobrara, Original Hole		4	14,939.0	14,940.0	10/2/2024	
		Niobrara, Original Hole		4	14,987.0	14,988.0	10/2/2024	
7,662.4			Niobrara, Original Hole		4	15,035.0	15,036.0	10/2/2024
			Niobrara, Original Hole		4	15,084.0	15,085.0	10/2/2024
8,129.9			Niobrara, Original Hole		4	15,132.0	15,133.0	10/2/2024
			Niobrara, Original Hole		4	15,181.0	15,182.0	10/2/2024
8,499.0			Niobrara, Original Hole		4	15,211.0	15,212.0	10/2/2024
			Niobrara, Original Hole		4	15,259.0	15,260.0	10/2/2024
8,916.0			Niobrara, Original Hole		4	15,307.0	15,308.0	10/2/2024
			Niobrara, Original Hole		4	15,356.0	15,357.0	10/2/2024
9,268.0			Niobrara, Original Hole		4	15,404.0	15,405.0	10/2/2024
			Niobrara, Original Hole		4	15,453.0	15,454.0	10/2/2024
9,680.1			Niobrara, Original Hole		4	15,483.0	15,484.0	10/2/2024
			Niobrara, Original Hole		4	15,531.0	15,532.0	10/2/2024
10,037.1			Niobrara, Original Hole		4	15,579.0	15,580.0	10/2/2024
			Niobrara, Original Hole		4	15,628.0	15,629.0	10/2/2024
10,454.1			Niobrara, Original Hole		4	15,676.0	15,677.0	10/2/2024
			Niobrara, Original Hole		4	15,725.0	15,726.0	10/2/2024
10,824.1			Niobrara, Original Hole		4	15,756.0	15,757.0	10/1/2024
			Niobrara, Original Hole		4	15,804.0	15,805.0	10/1/2024
11,222.1			Niobrara, Original Hole		4	15,852.0	15,853.0	10/1/2024
			Niobrara, Original Hole		4	15,901.0	15,902.0	10/1/2024
11,591.9			Niobrara, Original Hole		4	15,949.0	15,950.0	10/1/2024
			Niobrara, Original Hole		4	15,998.0	15,999.0	10/1/2024
11,991.1			Niobrara, Original Hole		4	16,028.0	16,029.0	10/1/2024
			Niobrara, Original Hole		4	16,076.0	16,077.0	10/1/2024
12,360.9			Niobrara, Original Hole		4	16,076.0	16,077.0	10/1/2024
			Niobrara, Original Hole		4	16,124.0	16,125.0	10/1/2024
12,759.8			Niobrara, Original Hole		4	16,173.0	16,174.0	10/1/2024
			Niobrara, Original Hole		4	16,173.0	16,174.0	10/1/2024
13,081.0			Niobrara, Original Hole		4	16,221.0	16,222.0	10/1/2024
			Niobrara, Original Hole		4	16,221.0	16,222.0	10/1/2024
13,498.0			Niobrara, Original Hole		4	16,270.0	16,271.0	10/1/2024
			Niobrara, Original Hole		4	16,270.0	16,271.0	10/1/2024
13,850.1			Niobrara, Original Hole		4	16,300.0	16,301.0	10/1/2024
			Niobrara, Original Hole		4	16,300.0	16,301.0	10/1/2024
14,267.1			Niobrara, Original Hole		4	16,348.0	16,349.0	10/1/2024
			Niobrara, Original Hole		4	16,348.0	16,349.0	10/1/2024
14,637.1		Niobrara, Original Hole		4	16,396.0	16,397.0	10/1/2024	
		Niobrara, Original Hole		4	16,396.0	16,397.0	10/1/2024	
15,035.1		Niobrara, Original Hole		4	16,445.0	16,446.0	10/1/2024	
		Niobrara, Original Hole		4	16,445.0	16,446.0	10/1/2024	
15,404.9		Niobrara, Original Hole		4	16,493.0	16,494.0	10/1/2024	
		Niobrara, Original Hole		4	16,493.0	16,494.0	10/1/2024	
15,804.1		Niobrara, Original Hole		4	16,542.0	16,543.0	10/1/2024	
		Niobrara, Original Hole		4	16,542.0	16,543.0	10/1/2024	
16,173.9		Niobrara, Original Hole		4	16,573.0	16,574.0	10/1/2024	
		Niobrara, Original Hole		4	16,573.0	16,574.0	10/1/2024	
16,573.2		Niobrara, Original Hole		4	16,621.0	16,622.0	10/1/2024	
		Niobrara, Original Hole		4	16,621.0	16,622.0	10/1/2024	
16,941.9		Niobrara, Original Hole		4	16,669.0	16,670.0	10/1/2024	
		Niobrara, Original Hole		4	16,669.0	16,670.0	10/1/2024	
17,358.9		Niobrara, Original Hole		4	16,718.0	16,719.0	10/1/2024	
		Niobrara, Original Hole		4	16,718.0	16,719.0	10/1/2024	
17,709.0		Niobrara, Original Hole		4	16,766.0	16,767.0	10/1/2024	
		Niobrara, Original Hole		4	16,766.0	16,767.0	10/1/2024	
		Niobrara, Original Hole		4	16,815.0	16,816.0	10/1/2024	
		Niobrara, Original Hole		4	16,815.0	16,816.0	10/1/2024	
		Niobrara, Original Hole		4	16,845.0	16,846.0	9/30/2024	
		Niobrara, Original Hole		4	16,845.0	16,846.0	9/30/2024	
		Niobrara, Original Hole		4	16,893.0	16,894.0	9/30/2024	
		Niobrara, Original Hole		4	16,893.0	16,894.0	9/30/2024	
		Niobrara, Original Hole		4	16,941.0	16,942.0	9/30/2024	
		Niobrara, Original Hole		4	16,941.0	16,942.0	9/30/2024	
		Niobrara, Original Hole		4	16,990.0	16,991.0	9/30/2024	
		Niobrara, Original Hole		4	16,990.0	16,991.0	9/30/2024	
		Niobrara, Original Hole		4	17,038.0	17,039.0	9/30/2024	
		Niobrara, Original Hole		4	17,038.0	17,039.0	9/30/2024	
		Niobrara, Original Hole		4	17,087.0	17,088.0	9/30/2024	
		Niobrara, Original Hole		4	17,087.0	17,088.0	9/30/2024	
		Niobrara, Original Hole		4	17,117.0	17,118.0	9/30/2024	
		Niobrara, Original Hole		4	17,117.0	17,118.0	9/30/2024	
		Niobrara, Original Hole		4	17,165.0	17,166.0	9/30/2024	
		Niobrara, Original Hole		4	17,165.0	17,166.0	9/30/2024	
		Niobrara, Original Hole		4	17,213.0	17,214.0	9/30/2024	
		Niobrara, Original Hole		4	17,213.0	17,214.0	9/30/2024	
		Niobrara, Original Hole		4	17,262.0	17,263.0	9/30/2024	
		Niobrara, Original Hole		4	17,262.0	17,263.0	9/30/2024	
		Niobrara, Original Hole		4	17,310.0	17,311.0	9/30/2024	
		Niobrara, Original Hole		4	17,310.0	17,311.0	9/30/2024	
		Niobrara, Original Hole		4	17,359.0	17,360.0	9/30/2024	
		Niobrara, Original Hole		4	17,359.0	17,360.0	9/30/2024	
		Niobrara, Original Hole		4	17,390.0	17,391.0	9/30/2024	
		Niobrara, Original Hole		4	17,390.0	17,391.0	9/30/2024	
		Niobrara, Original Hole		4	17,438.0	17,439.0	9/30/2024	
		Niobrara, Original Hole		4	17,438.0	17,439.0	9/30/2024	
		Niobrara, Original Hole		4	17,486.0	17,487.0	9/30/2024	
		Niobrara, Original Hole		4	17,486.0	17,487.0	9/30/2024	
		Niobrara, Original Hole		4	17,538.0	17,539.0	9/30/2024	
		Niobrara, Original Hole		4	17,538.0	17,539.0	9/30/2024	



P&A Wellbore For State

Well Name: George 08N



Perforation Data					
Linked Zone	Explosive Type	Entered Shot Total	Top (ftKB)	Btm (ftKB)	Date
Niobrara, Original Hole		4	17,583.0	17,584.0	9/30/2024
Niobrara, Original Hole		4	17,632.0	17,633.0	9/30/2024
Niobrara, Original Hole		4	17,662.0	17,663.0	9/29/2024
Niobrara, Original Hole		4	17,708.0	17,709.0	9/29/2024
Niobrara, Original Hole		4	17,760.0	17,761.0	9/29/2024
Niobrara, Original Hole		4	17,807.0	17,808.0	9/29/2024
Niobrara, Original Hole		4	17,855.0	17,856.0	9/29/2024
Niobrara, Original Hole		4	17,904.0	17,905.0	9/29/2024
Niobrara, Original Hole		12	17,935.0	17,937.0	8/6/2024

Stim/Frac Stage			
Zone	Start Date	Top (ftKB)	Btm (ftKB)
Niobrara, Original Hole	10/8/2024	7,858.0	8,101.0
Niobrara, Original Hole	10/8/2024	8,130.0	8,373.0
Niobrara, Original Hole	10/7/2024	8,398.0	8,645.0
Niobrara, Original Hole	10/7/2024	8,675.0	8,917.0
Niobrara, Original Hole	10/7/2024	8,947.0	9,190.0
Niobrara, Original Hole	10/7/2024	9,219.0	9,462.0
Niobrara, Original Hole	10/7/2024	9,492.0	9,735.0
Niobrara, Original Hole	10/7/2024	9,764.0	10,007.0
Niobrara, Original Hole	10/6/2024	10,036.0	10,279.0
Niobrara, Original Hole	10/6/2024	10,309.0	10,550.0
Niobrara, Original Hole	10/6/2024	10,581.0	10,824.0
Niobrara, Original Hole	10/6/2024	10,853.0	11,094.0
Niobrara, Original Hole	10/6/2024	11,126.0	11,373.0
Niobrara, Original Hole	10/5/2024	11,398.0	11,641.0
Niobrara, Original Hole	10/5/2024	11,670.0	11,913.0
Niobrara, Original Hole	10/5/2024	11,944.0	12,186.0
Niobrara, Original Hole	10/5/2024	12,215.0	12,458.0
Niobrara, Original Hole	10/4/2024	12,487.0	12,730.0
Niobrara, Original Hole	10/4/2024	12,760.0	13,003.0
Niobrara, Original Hole	10/4/2024	13,032.0	13,275.0
Niobrara, Original Hole	10/4/2024	13,305.0	13,548.0
Niobrara, Original Hole	10/3/2024	13,577.0	13,819.0
Niobrara, Original Hole	10/3/2024	13,849.0	14,092.0
Niobrara, Original Hole	10/3/2024	14,122.0	14,365.0
Niobrara, Original Hole	10/3/2024	14,392.0	14,637.0
Niobrara, Original Hole	10/3/2024	14,666.0	14,909.0
Niobrara, Original Hole	10/2/2024	14,939.0	15,182.0
Niobrara, Original Hole	10/2/2024	15,211.0	15,454.0
Niobrara, Original Hole	10/2/2024	15,483.0	15,726.0
Niobrara, Original Hole	10/2/2024	15,756.0	15,999.0
Niobrara, Original Hole	10/1/2024	16,028.0	16,271.0
Niobrara, Original Hole	10/1/2024	16,300.0	16,543.0
Niobrara, Original Hole	10/1/2024	16,573.0	16,816.0
Niobrara, Original Hole	10/1/2024	16,845.0	17,088.0
Niobrara, Original Hole	9/30/2024	17,117.0	17,360.0
Niobrara, Original Hole	9/30/2024	17,390.0	17,633.0
Niobrara, Original Hole	9/30/2024	17,662.0	17,905.0
Niobrara, Original Hole	9/30/2024	17,935.0	17,937.0

Other In Hole					
Run Date	Des	Make	OD (in)	Top (ftKB)	Btm (ftKB)

Logs			
Date	Type	Depth Top (MD) (ftKB)	Btm (ftKB)

Wellbore Plug Back Total Depths			
Date	Type	Com	PBTD (ftKB)
10/25/2024	Ball Seat	COIL DEPTH ABOVE BALL SEAT	17,923
11/24/2024	Float Collar		17,968