

Comp. CHEVRON
Well SPOMER 32-16H6
Field Wattenberg
Co. Weld
State Colorado

Company **CHEVRON**
Well **SPOMER 32-16H6**
Field **Wattenberg**
County **Weld** State **Colorado**

Location: API # : 05-123-18031
SE/SE
Permanent Datum SEC 32 TWP 5N RGE 66W
Log Measured From KB 13 Elevation 4739
Drilling Measured From KB Above Perm. Datum
K.B. 4752
D.F. 4751
G.L. 4739

Date of Service	10/17/2024			
Run Number	ONE			
Depth Driller or PBTD	7313			
Depth Logger	4656			
Bottom Log Interval	4660			
Top Log Interval	SURFACE			
Open Hole Size	7.875			
Type Fluid	WATER			
Fluid Level	Full			
Fluid Density	N/A			
Max. Recorded Temperature	N/A			
Max. Wellhead Pressure	0			
Wellhead Connection	N/A			
Estimated Cement Top	SEE LOG			
Unit Number	5076			
Wireline Size	9/32			
Location	GREELEY CO			
Recorded By	CODY JENSEN			
Witnessed By				
Tubing Record	Size	WFt	Top	Bottom
Surface Casing				
Production Casing	3.5	7.7	SURFACE	7293
Liner Record				

<<< Fold Here >>>

All interpretations are opinions based on inferences from electrical or other measurements and Pioneer Wireline Services, LLC cannot and does not guarantee the accuracy or correctness of any interpretation, and Pioneer Wireline Services, LLC will not be liable or responsible for any loss, costs, damages, or expenses incurred or sustained by anyone resulting from any interpretation made by any of our officers, agents or employees.

Comments

N/A DENOTES NOT AVAILABLE OR NON-APPLICABLE.

THANK YOU FOR USING PIONEER ENERGY SERVICES!

Your Pioneer Energy Services Crew	Tool Data - Services	Serial Number
Engineer: Operator: Operator: Operator:		

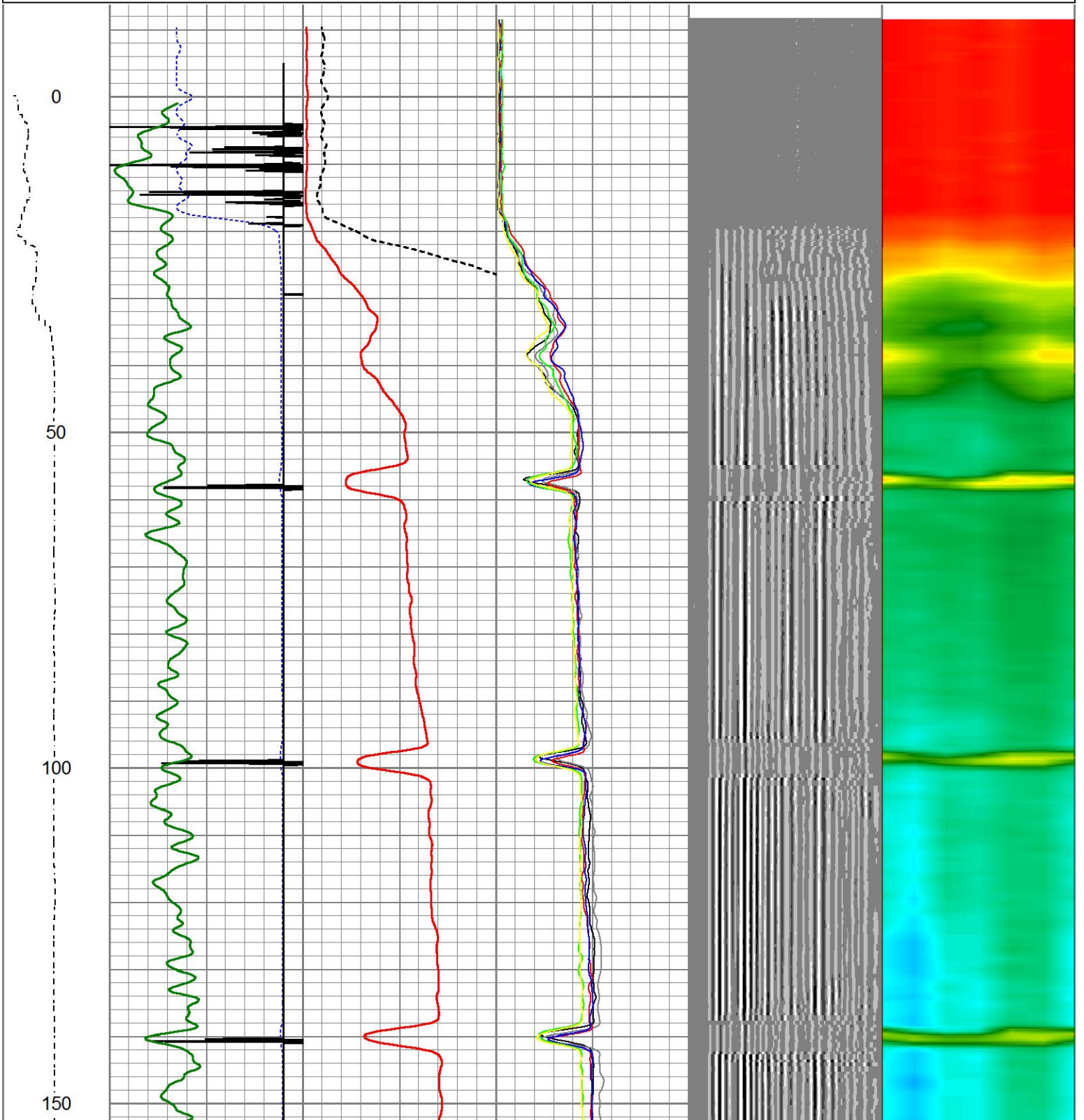
Quantity	Offset (ft)	Substrate	Description	Length (ft)	O.D. (in)	Weight (lb)
----------	-------------	-----------	-------------	-------------	-----------	-------------

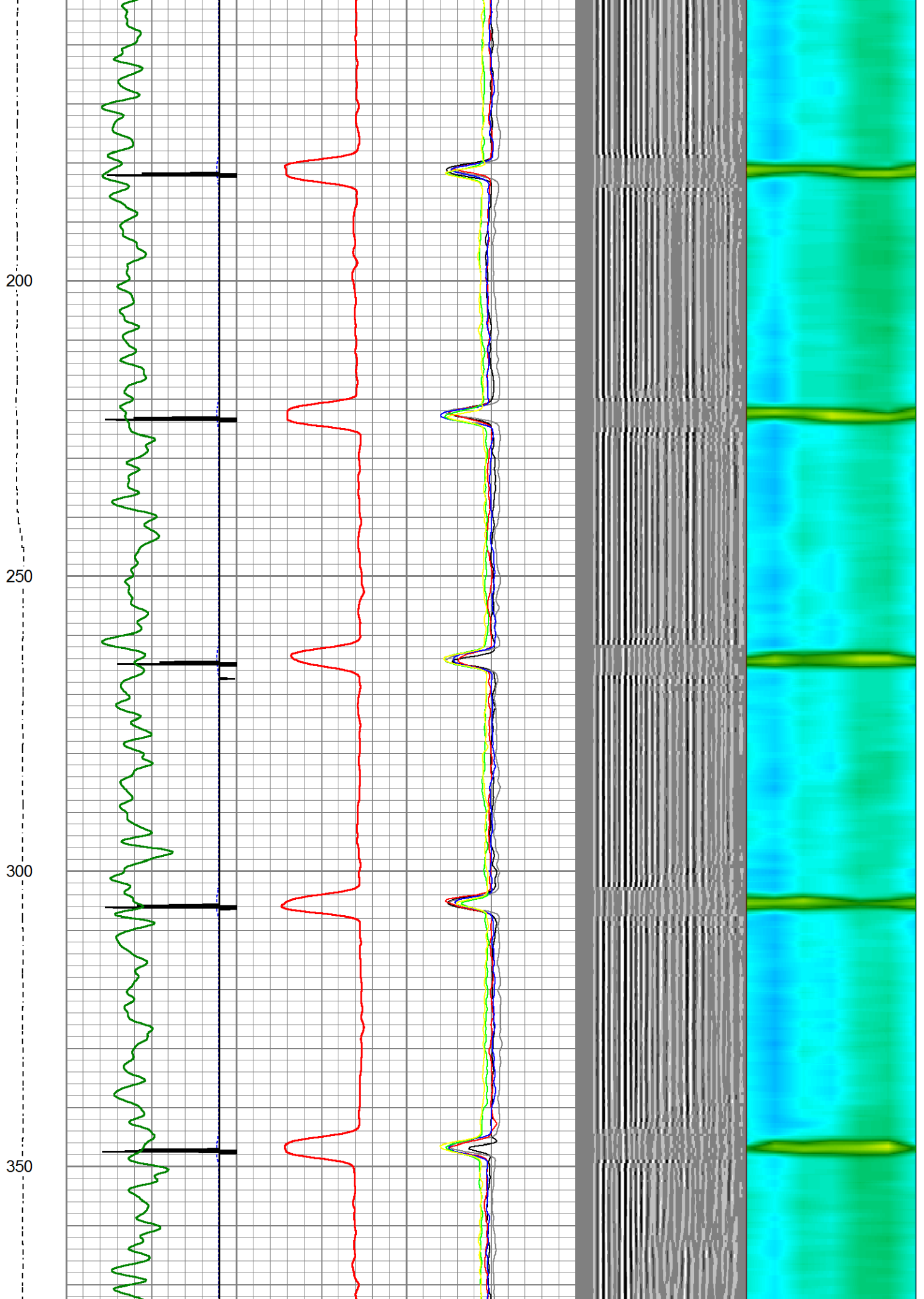
Sensor	Offset (ft)	Schematic	Description	Length (ft)	O.D. (in)	Weight (lb)	
			Cable Head-Titan_169 1 11/16" Titan Cable Head	1.03	1.69	2.00	
			Centralizer-169 Titan ADJ Titan 1 11/16" Adjustable Centralizer	2.75	1.69	22.00	
TEMP	14.67						
WVFCAL	14.00						
WVFS6	13.25						
WVFS5	13.25						
WVFS4	13.25						
WVFS3	13.25						
WVFS2	13.25						
WVFS1	13.25						
WVF3FT	12.50						
WVF5FT	11.50						
			TekCo-SCBL-169-169 TekCo w Temp (ICE-J4 02) 1 11/16" RIB w/ Temp 400 Deg. F	9.75	1.69	63.00	
WVFTEMP	8.17						
			Centralizer-169 Titan ADJ Titan 1 11/16" Adjustable Centralizer	2.75	1.69	22.00	
CCL	4.70		CCL_Logging-169 TekCo (TekCo-169) TekCo 1 11/16" Rare Earth	1.33	1.69	5.00	
GR	1.27		GR-169 TekCo (TekCo-169) TEKCO 1 11/16" 400 Deg. F Logging Gamma Ray	3.82	1.68	40.00	
			Bullnose-Titan GO Pin Pressure Cap	0.27	1.38	1.00	

Dataset: spomer 32-16h6.db: field/well/run1/pass47
 Total length: 21.70 ft
 Total weight: 155.00 lb
 O.D.: 1.69 in

Database File spomer 32-16h6.db
 Dataset Pathname pass47
 Presentation Format ips_rbtcolorcivitas
 Dataset Creation Thu Oct 17 15:40:10 2024
 Charted by Depth in Feet scaled 1:240

LSPD	650	TT (usec)	150	0	AMP (mV)	100	0	AMPS1	150	200	VDL (usec)	1200	1	Cement Map	6
(ft/min)	-9	CCL	1		AMPLIFIED		0	AMPS2	150						
0	250	0	GR (cps)	200	0	(mV)	20	0	AMPS3	150					
		200	GR (cps)	400				0	AMPS4	150					
								0	AMPS5	150					
								0	AMPS6	150					



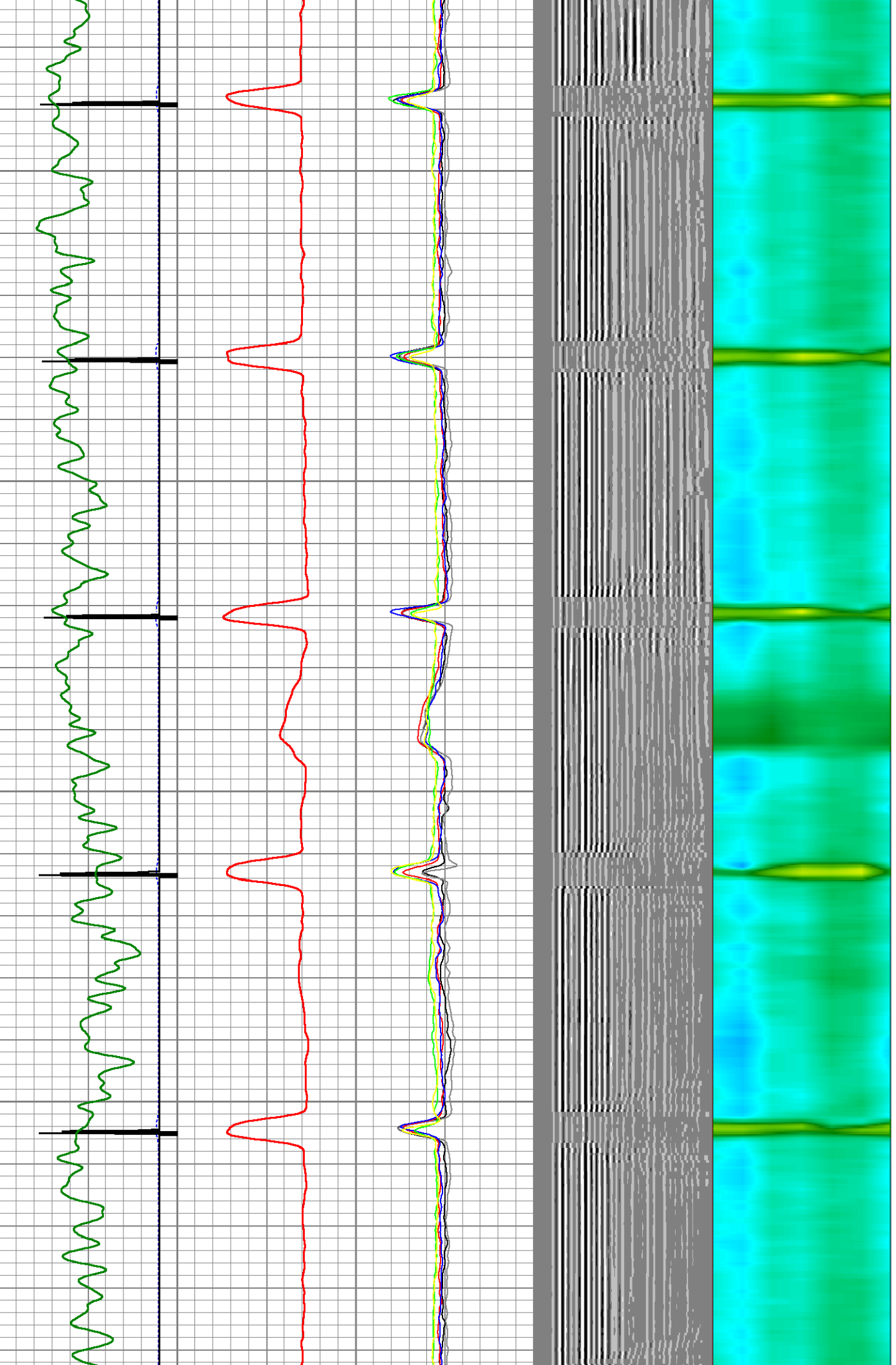


400

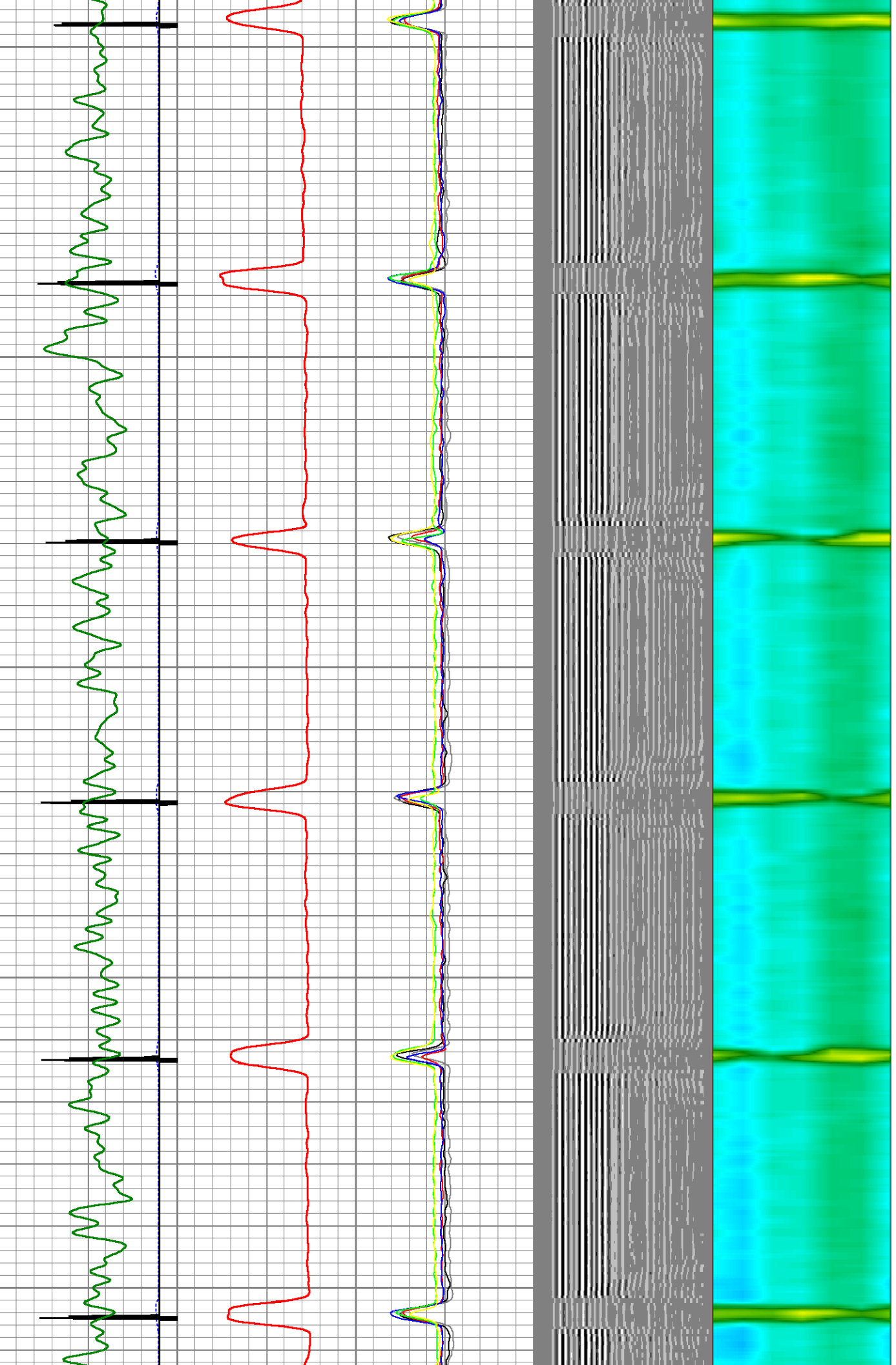
450

500

550



600
650
700
750
800

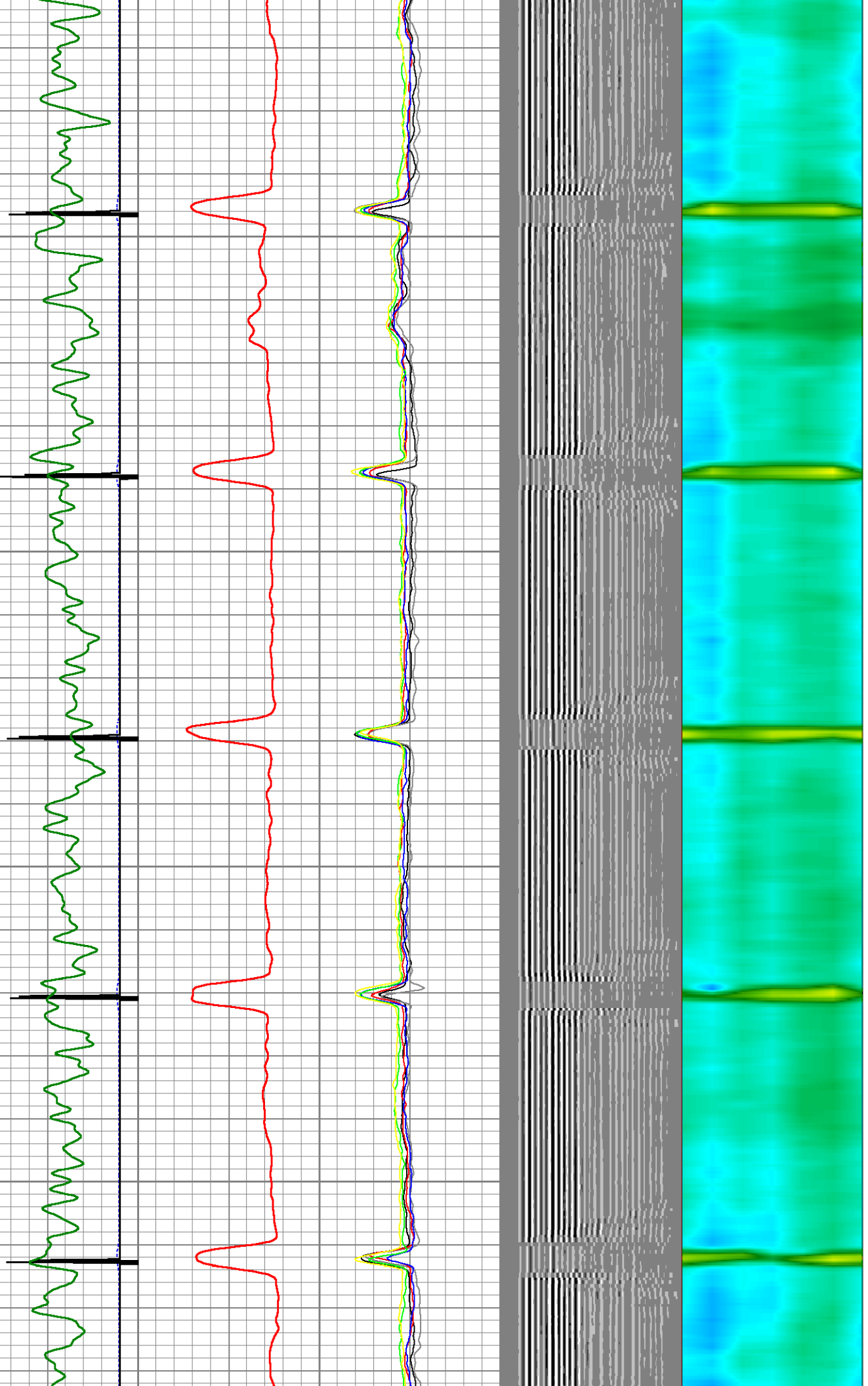


850

900

950

1000



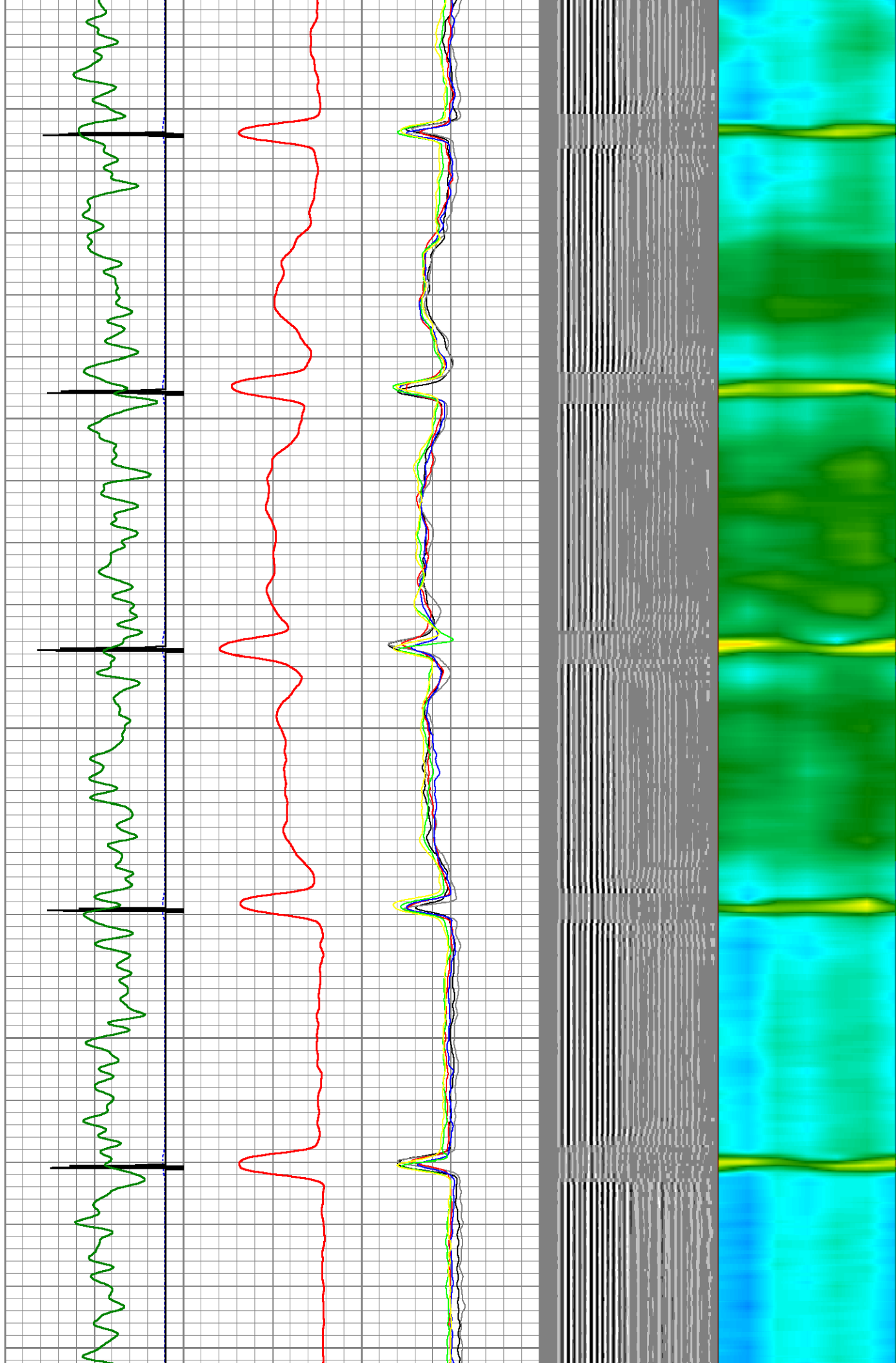
1050

1100

1150

1200

1250

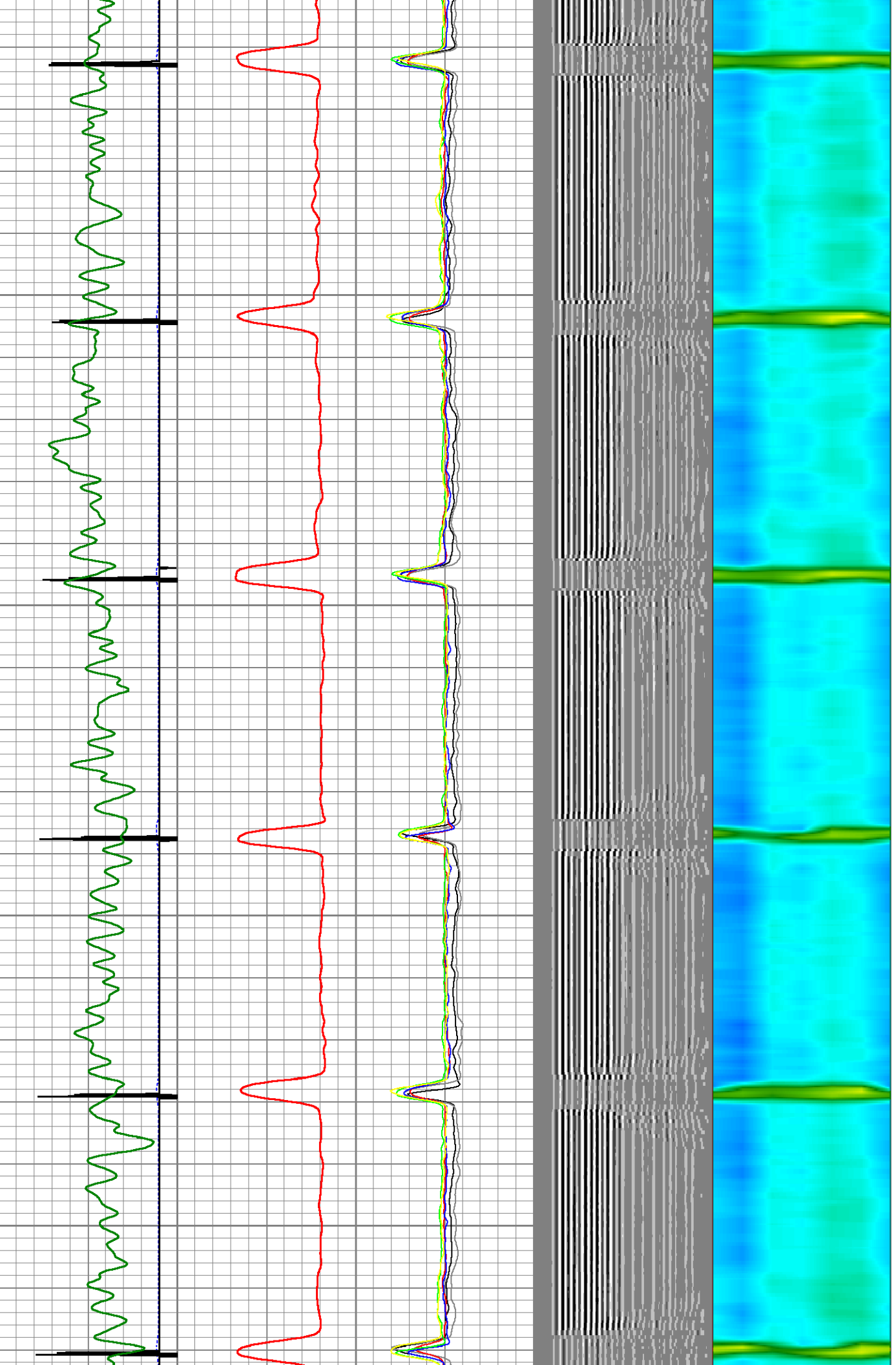


1300

1350

1400

1450

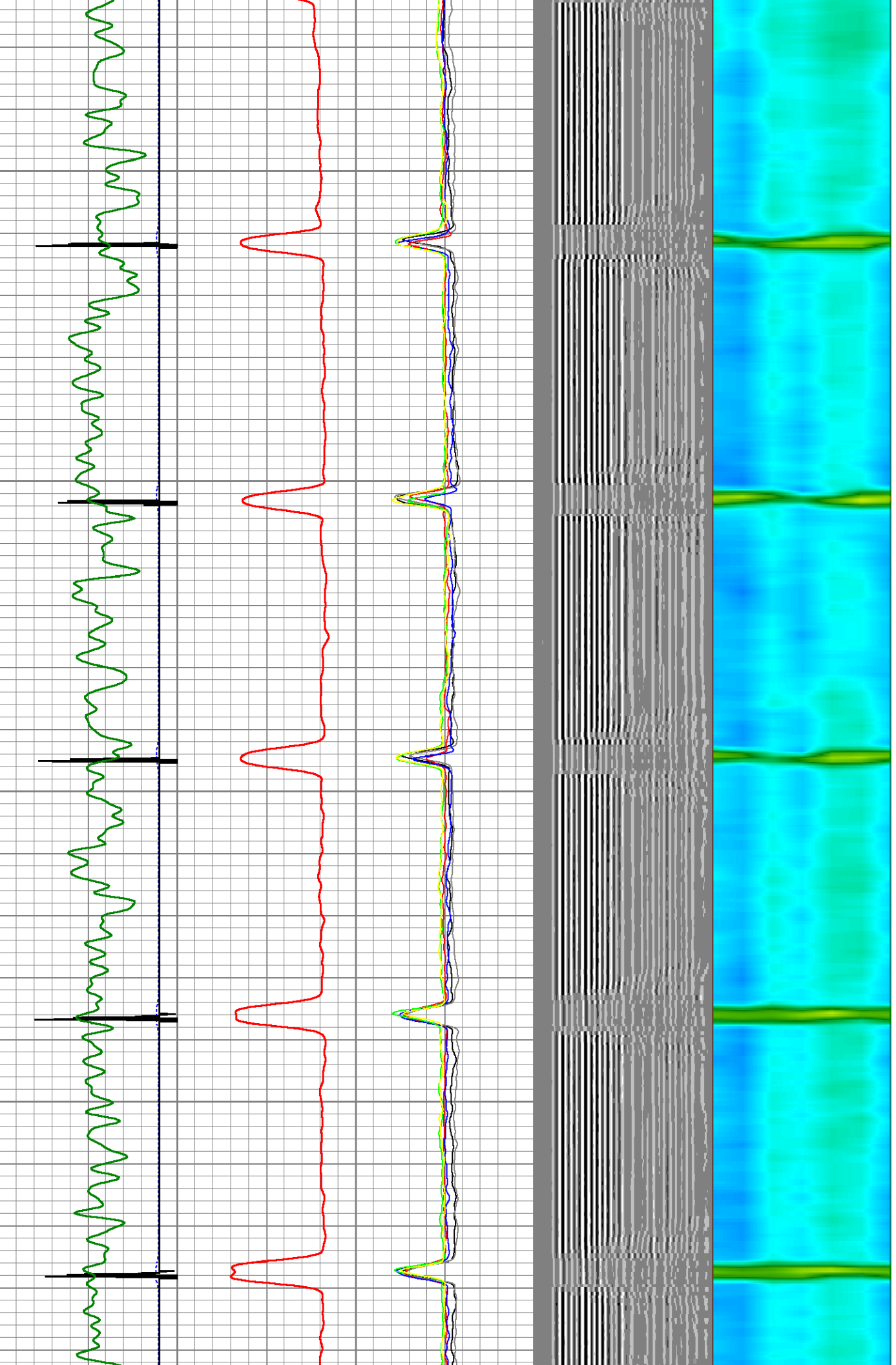


1500

1550

1600

1650



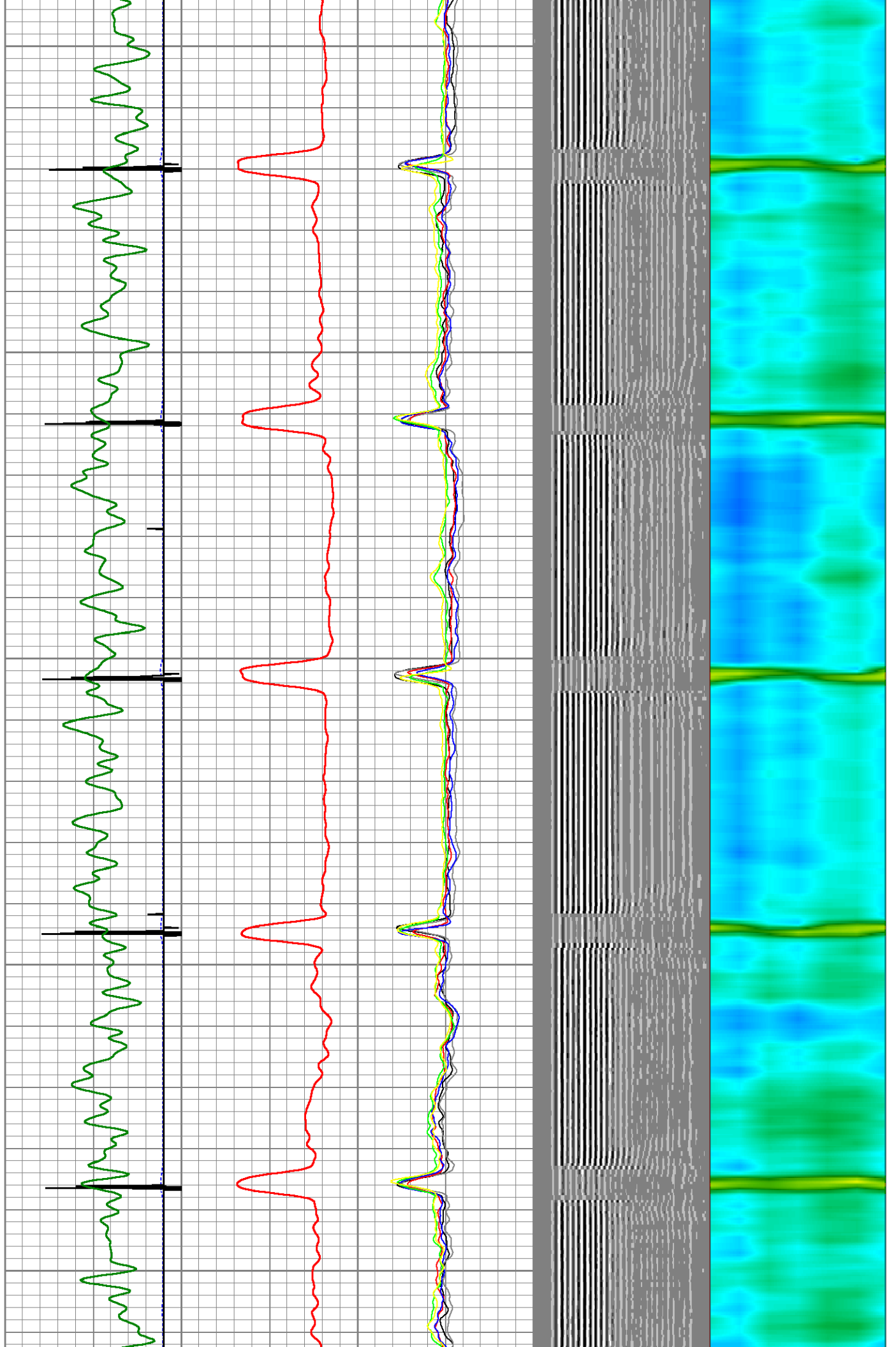
1700

1750

1800

1850

1900

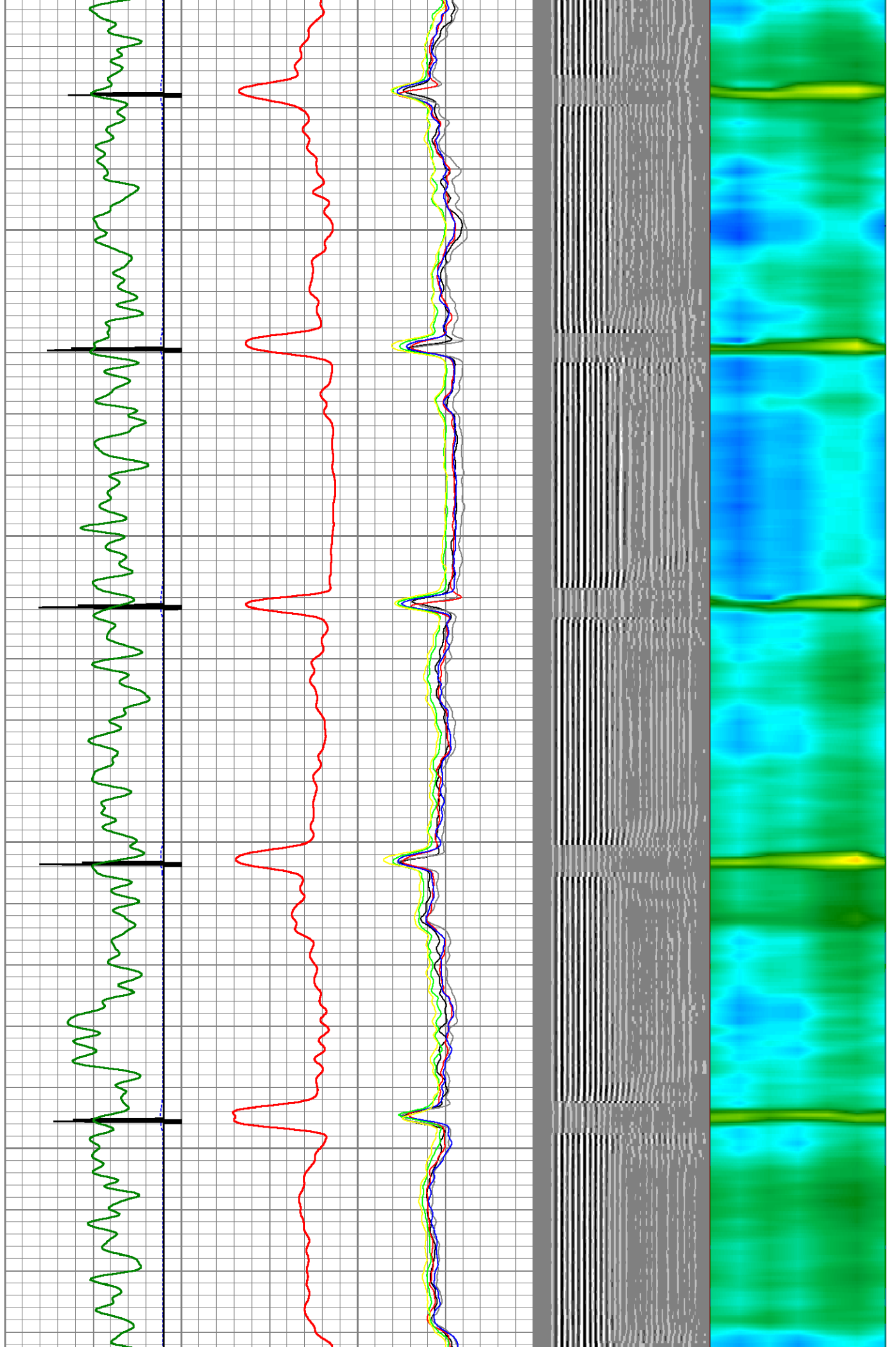


1950

2000

2050

2100



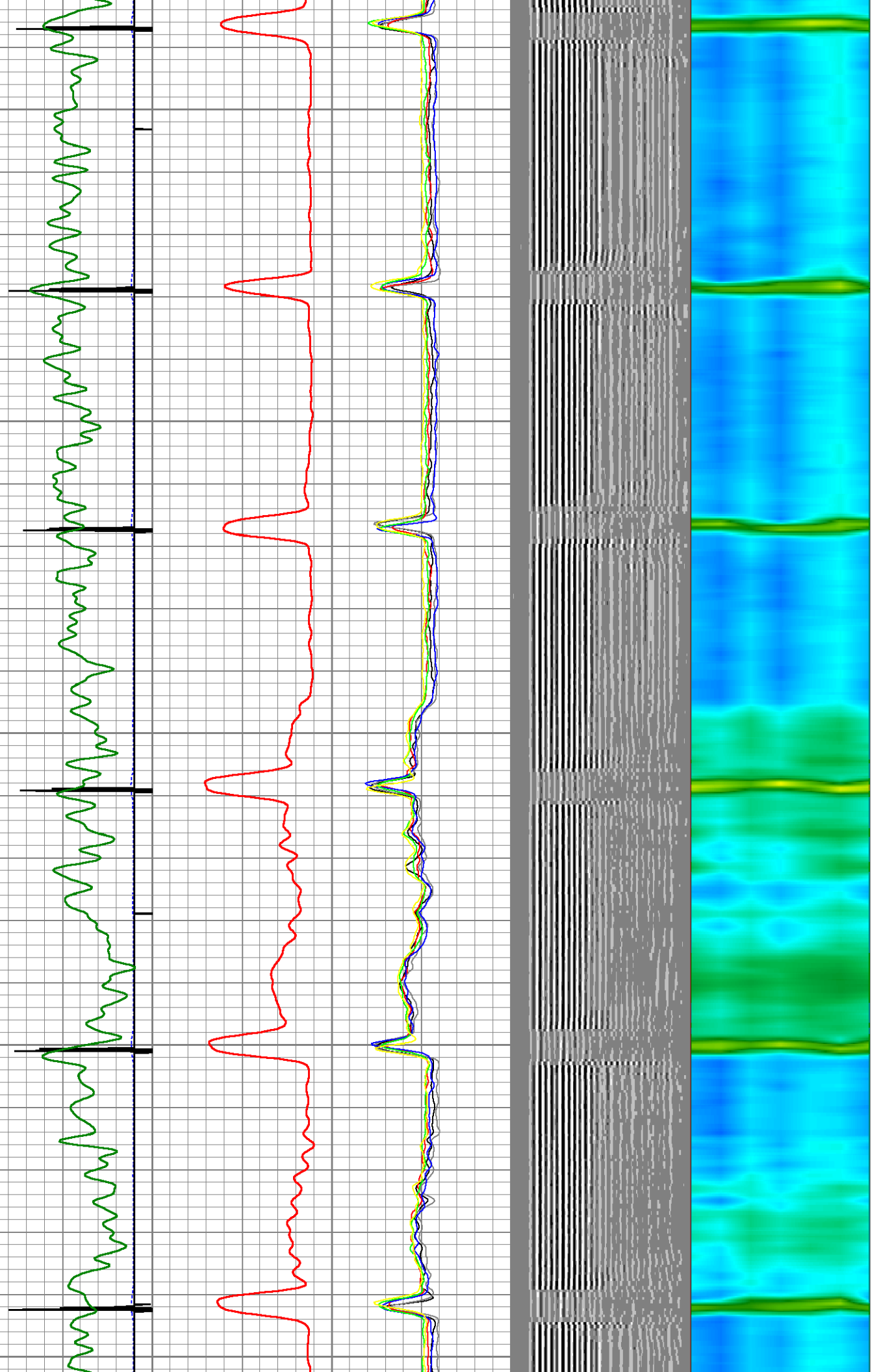
2150

2200

2250

2300

2350

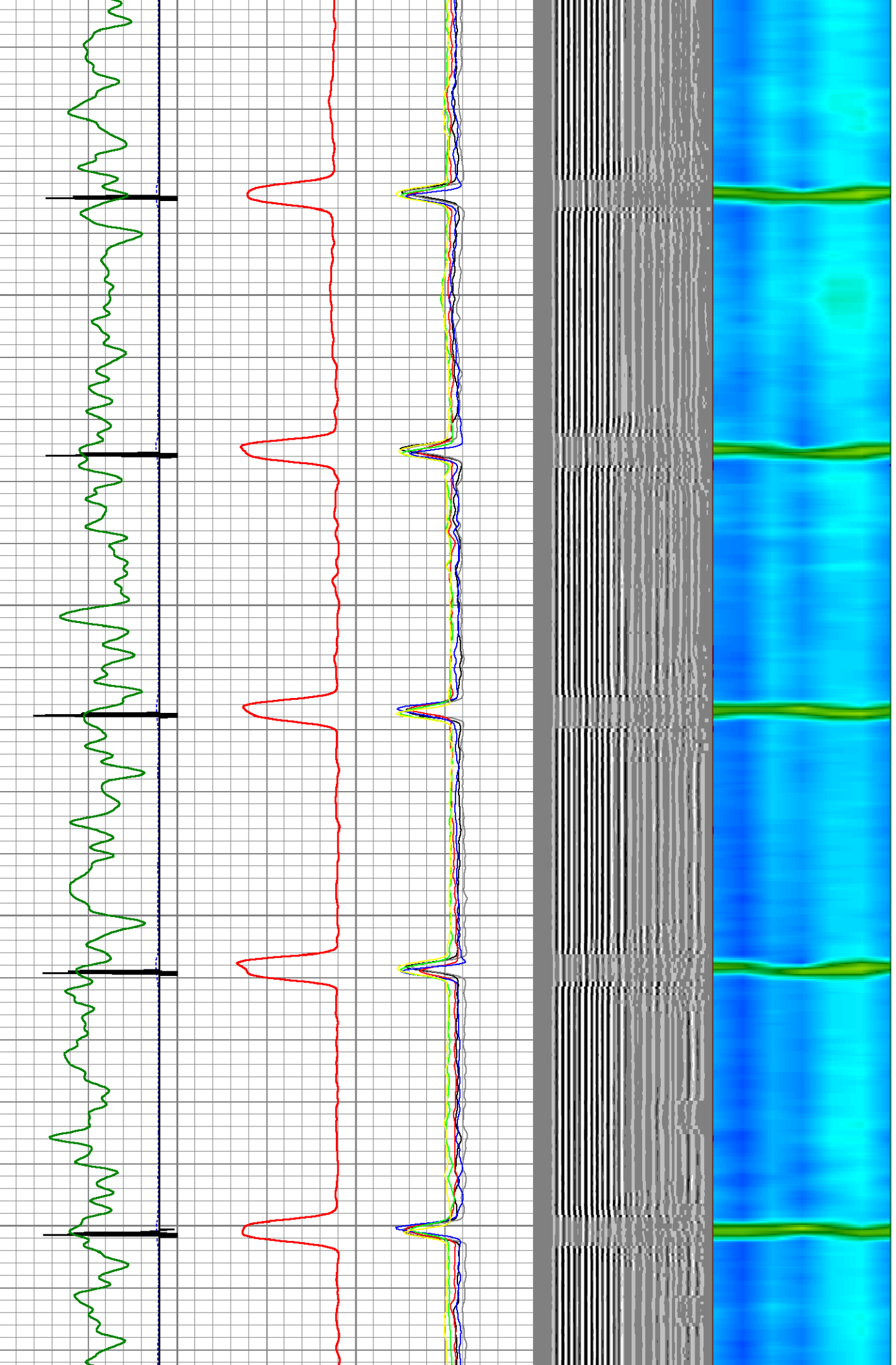


2400

2450

2500

2550

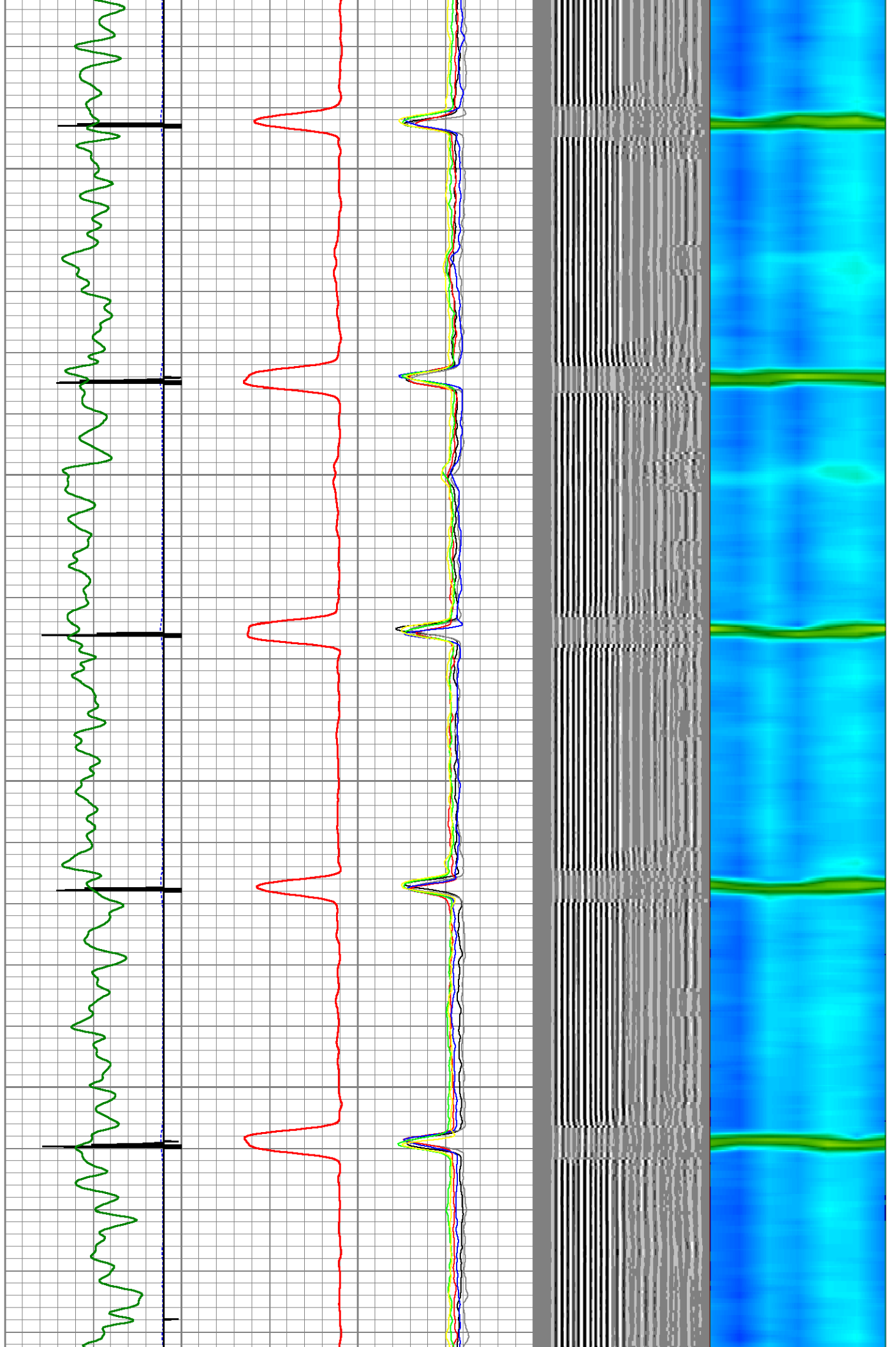


2600

2650

2700

2750



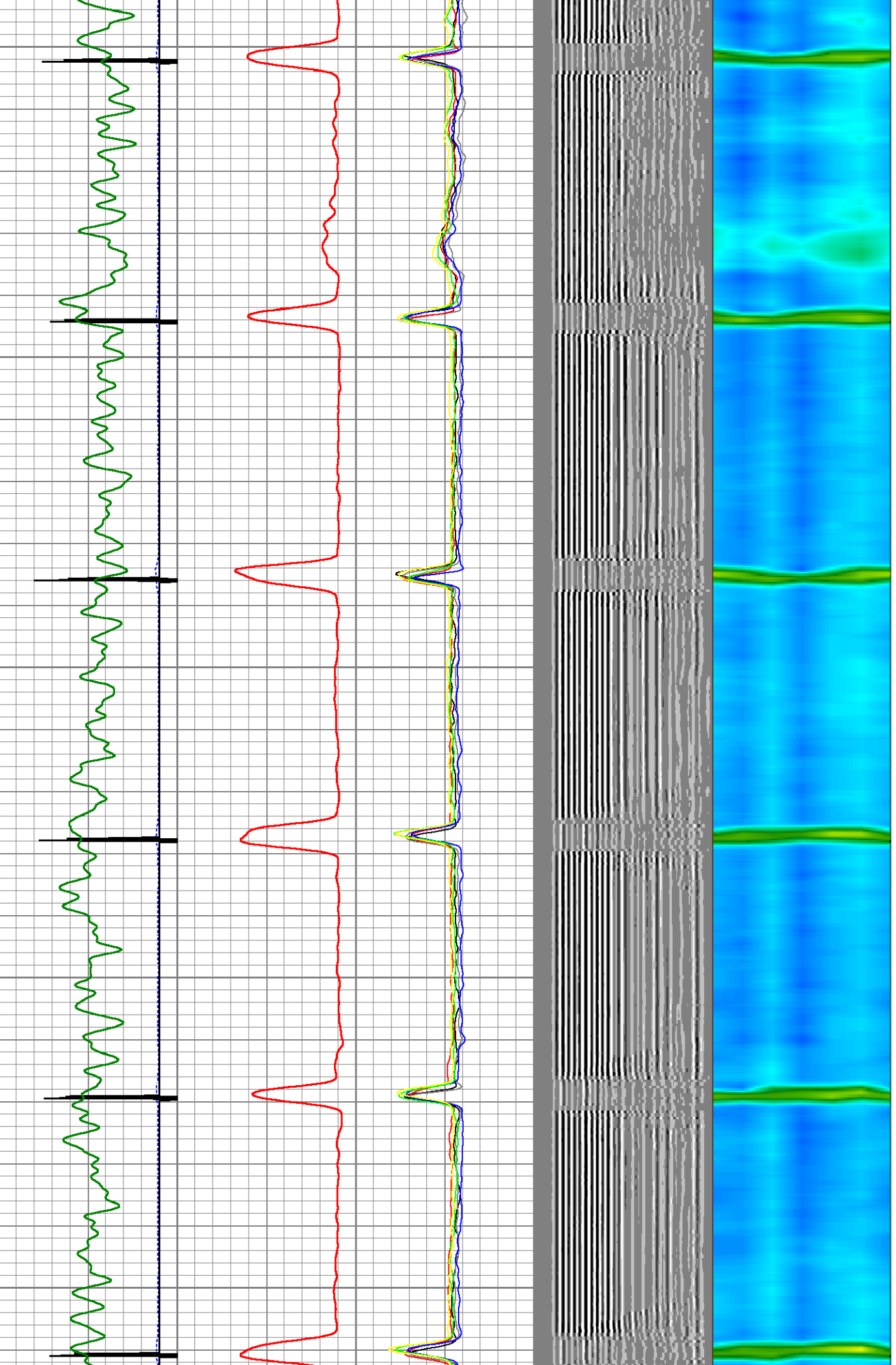
2800

2850

2900

2950

3000

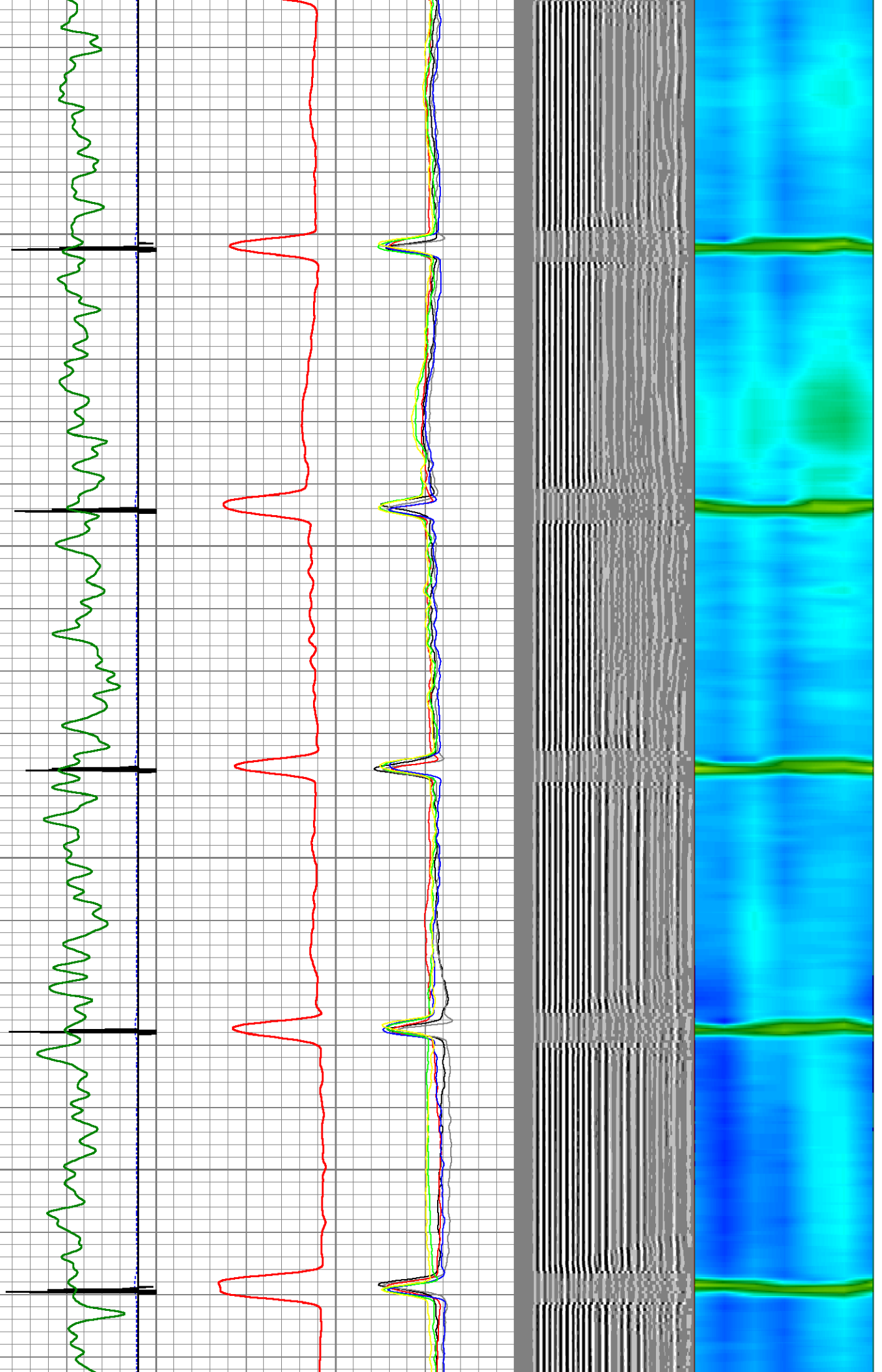


3050

3100

3150

3200



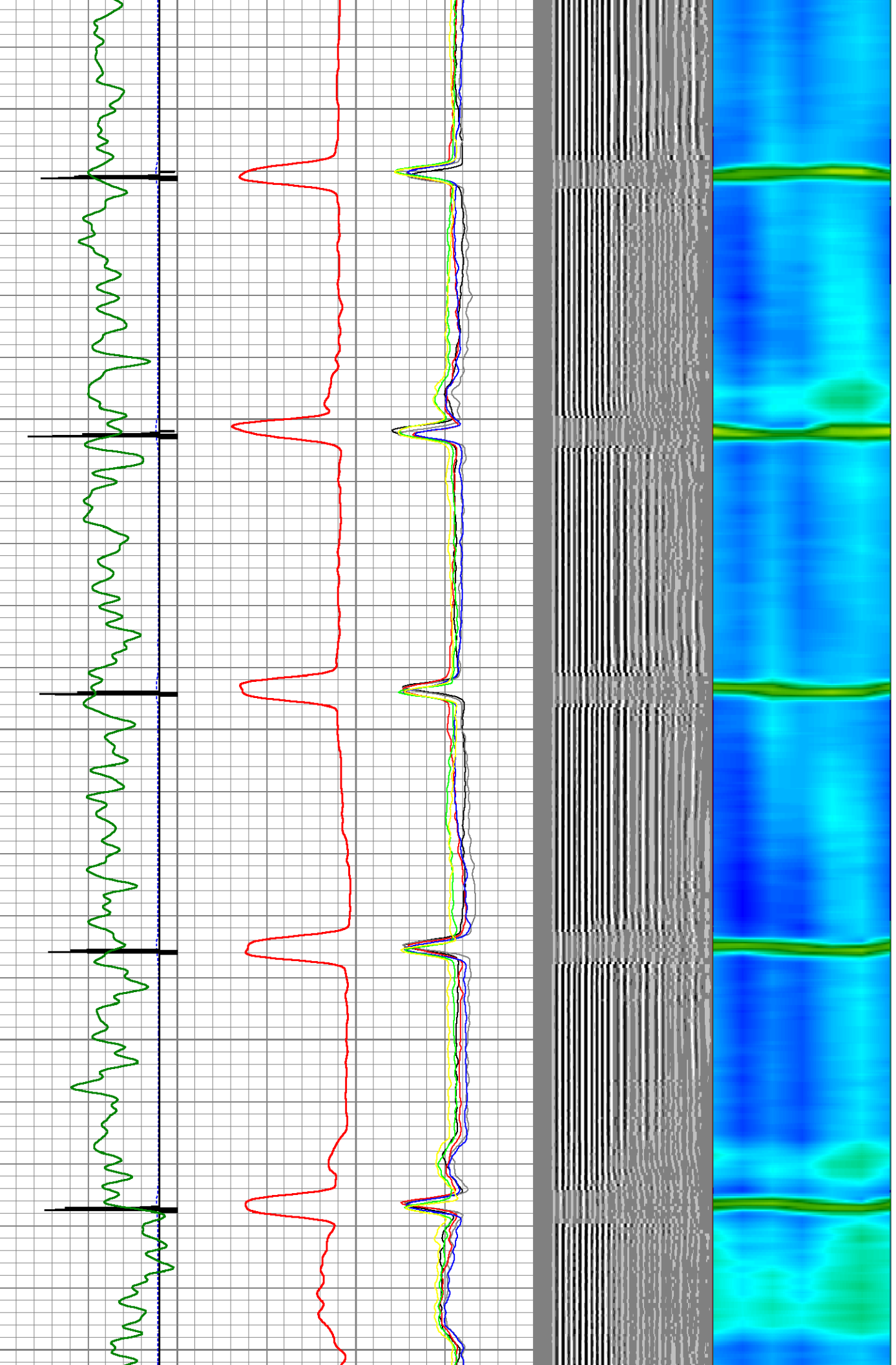
3250

3300

3350

3400

3450

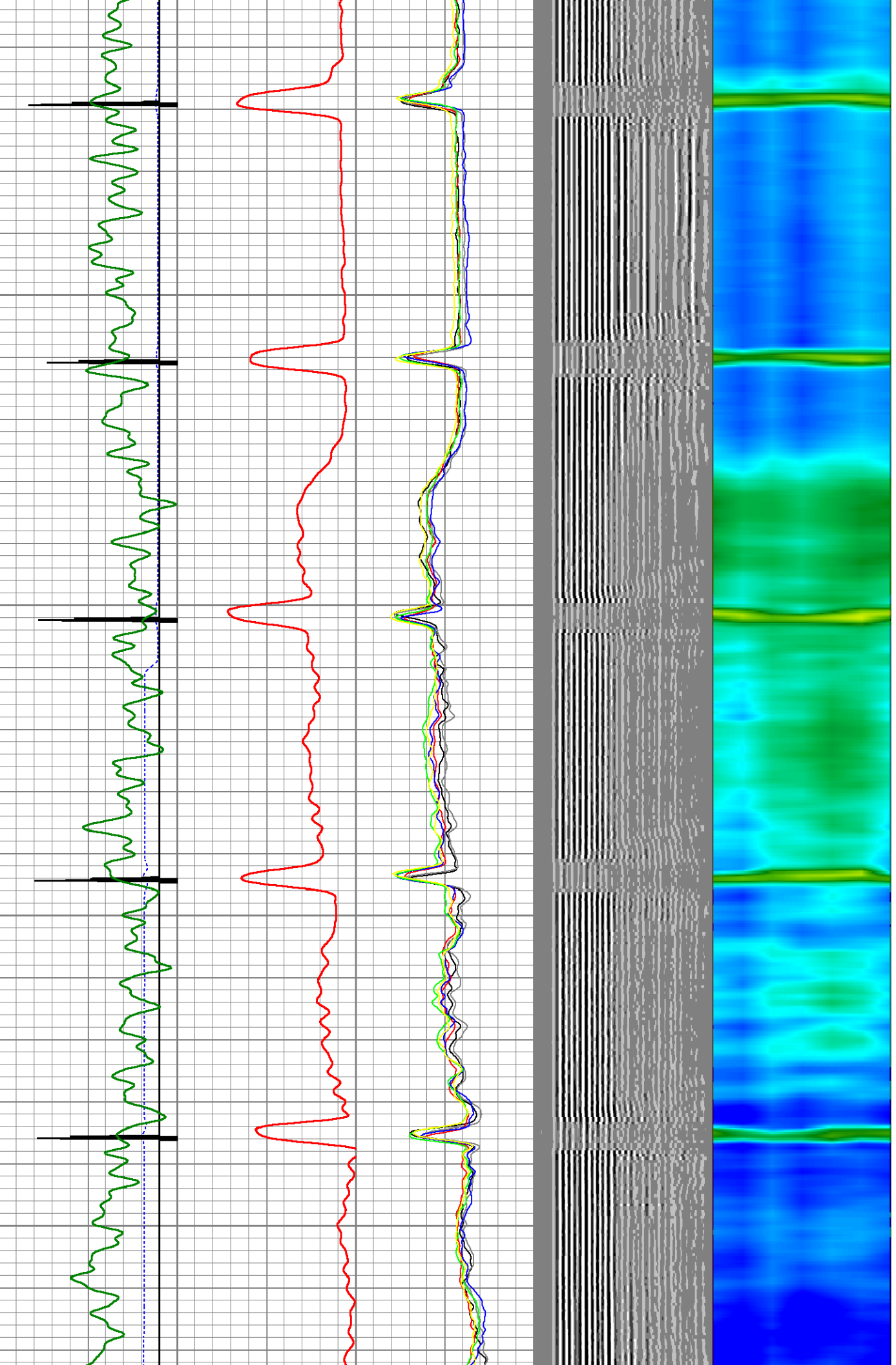


3500

3550

3600

3650

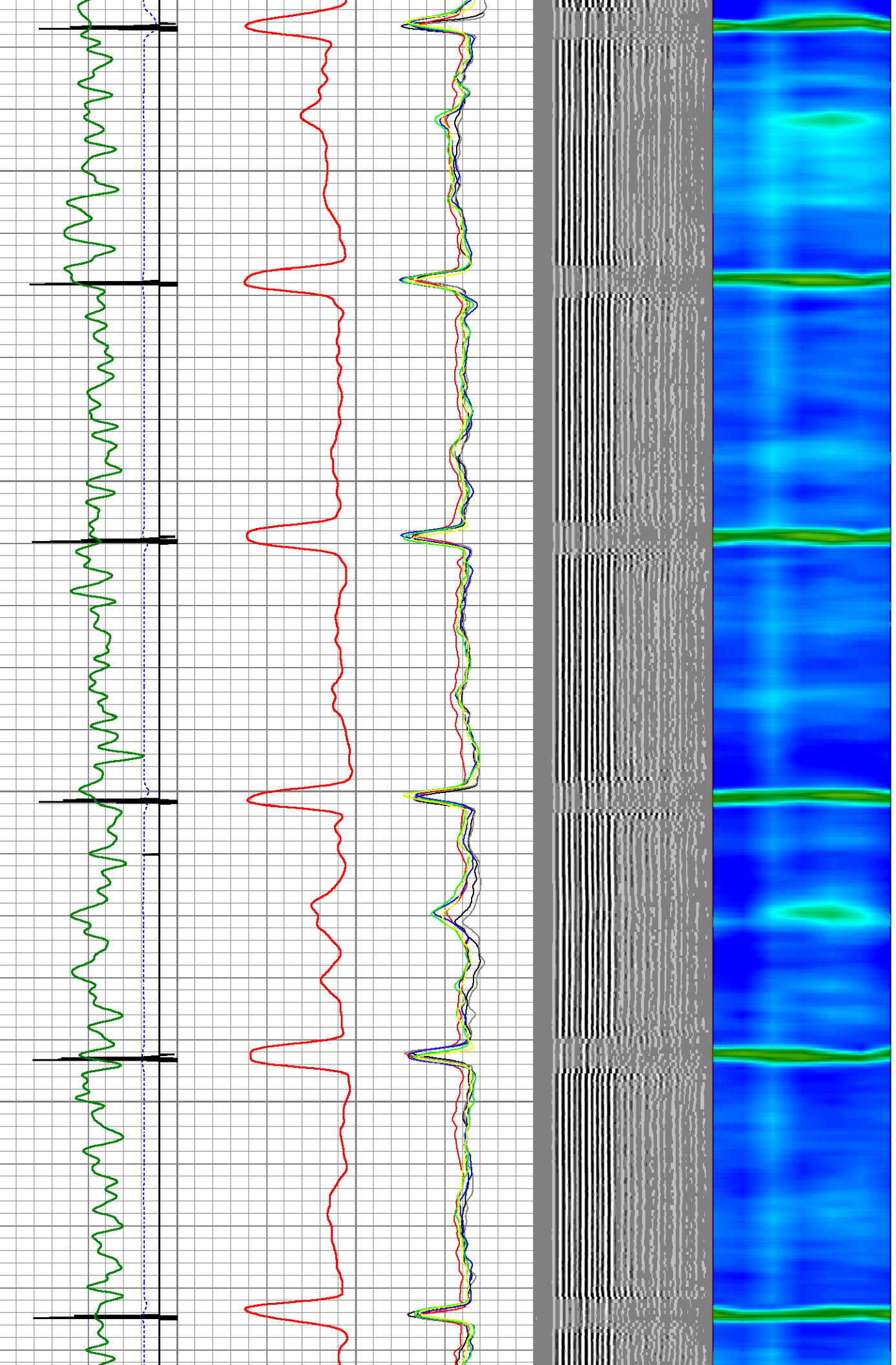


3700

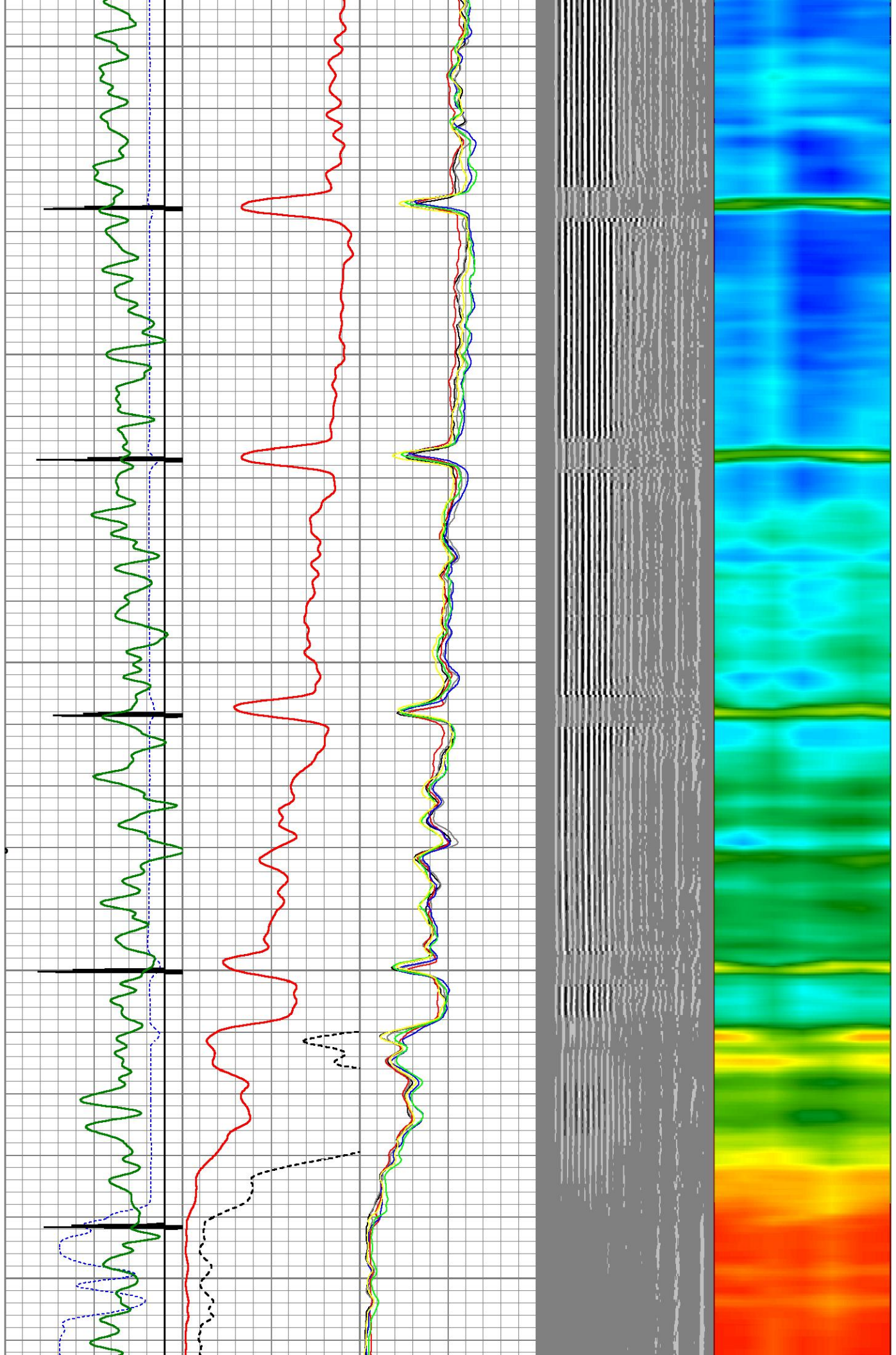
3750

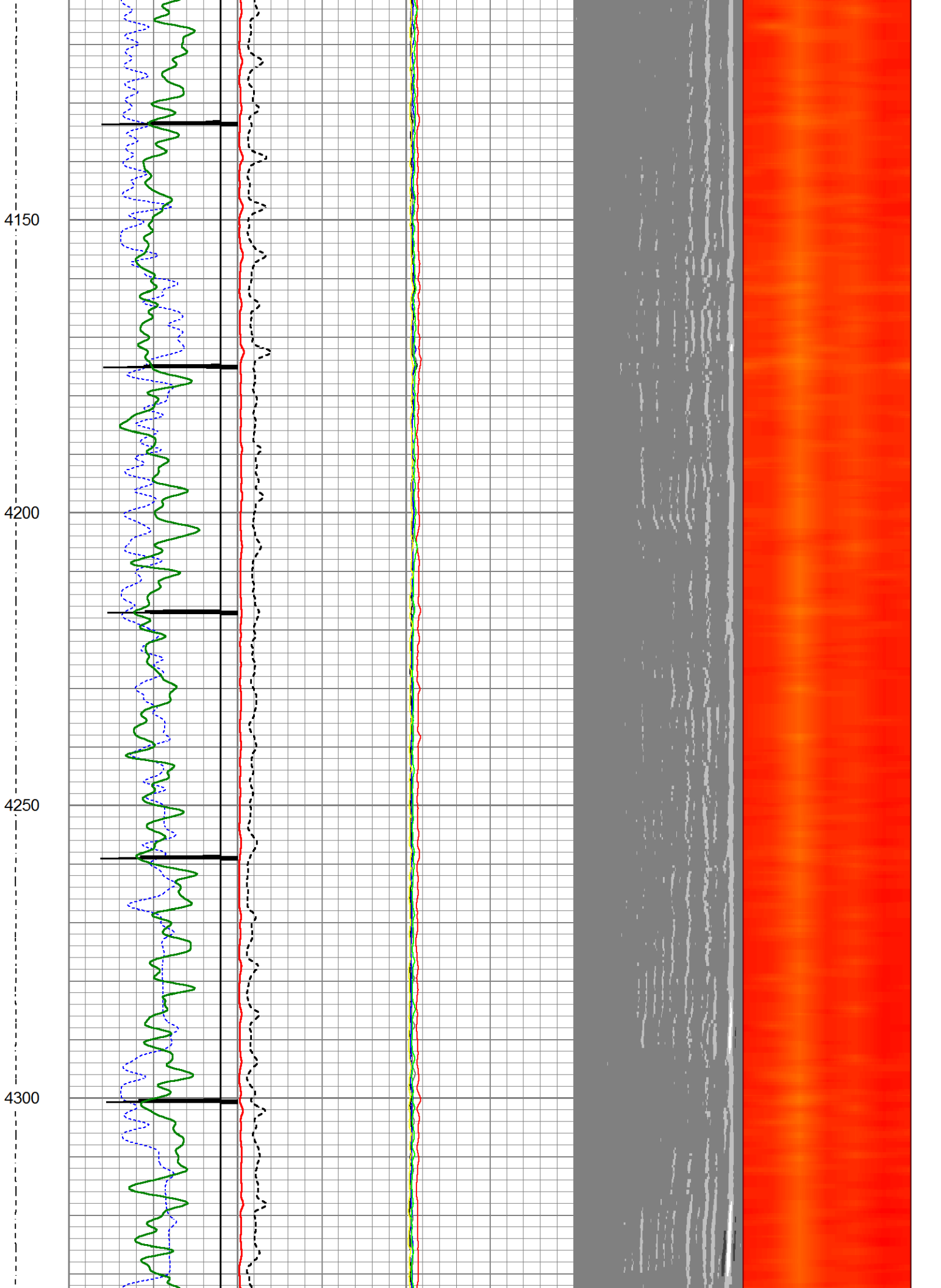
3800

3850



3900
3950
4000
4050
4100





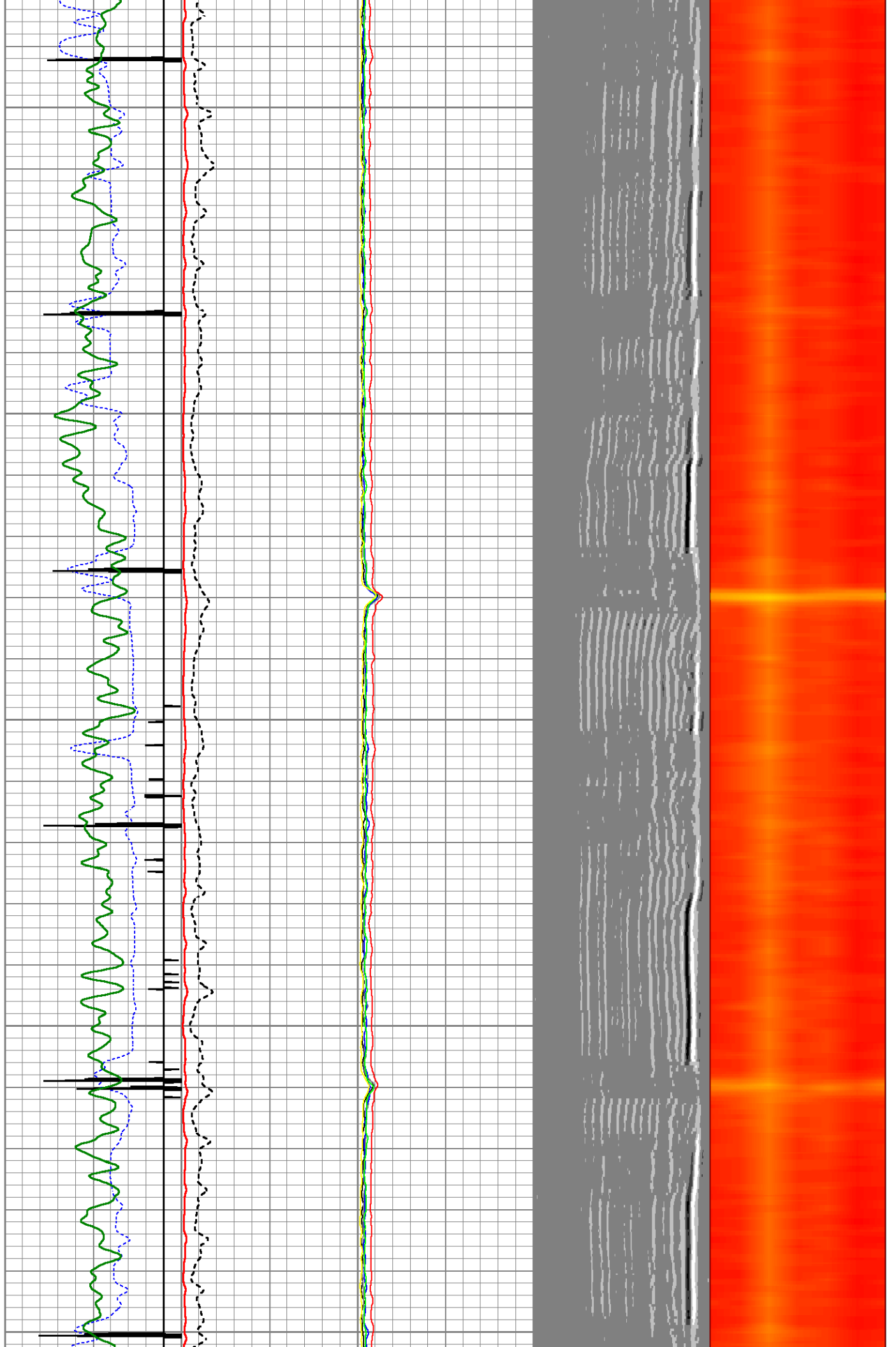
4350

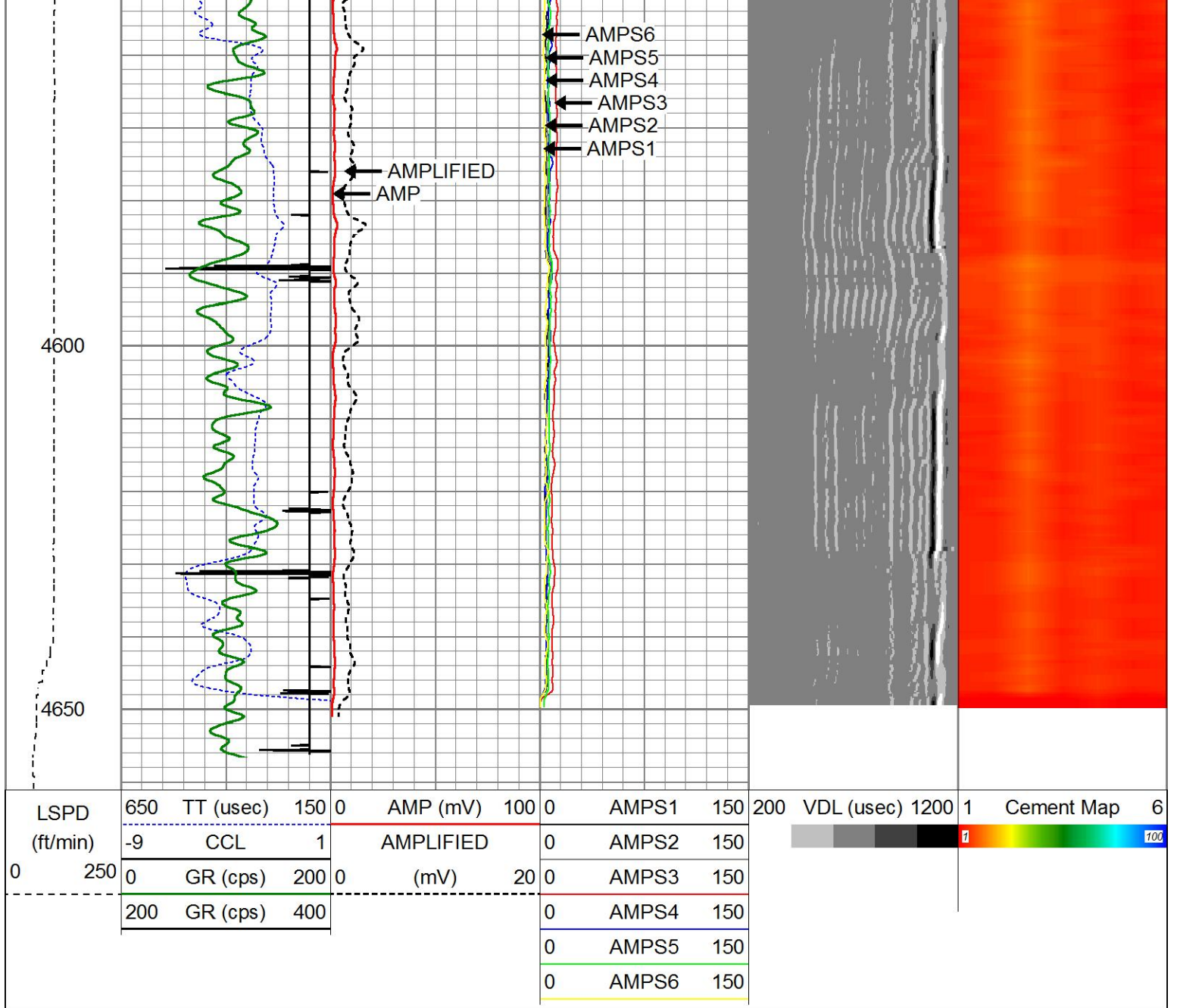
4400

4450

4500

4550





Calibration Report

Database File spomer 32-16h6.db
 Dataset Pathname pass47
 Dataset Creation Thu Oct 17 15:40:10 2024

Gamma Ray Calibration Report

Serial Number: TekCo-169
 Tool Model: 169 TekCo
 Performed: Wed Feb 14 08:06:26 2024

Calibrator Value: 1.0 cps

Background Reading: 0.0 cps
 Calibrator Reading: 1.0 cps

Sensitivity: 2.0000 cps/cps

Segmented Cement Bond Log Calibration Report

Serial Number: ICE-J4-02
 Tool Model: 169 TekCo w Temp

Calibration Casing Diameter: 3.500 in
 Calibration Depth: 3862.653 ft

Master Calibration, performed Thu Oct 17 15:36:52 2024:

	Raw (v)		Calibrated (mv)		Results	
	Zero	Cal	Zero	Cal	Gain	Offset
3'	0.000	1.322	0.800	94.517	70.910	0.800
CAL	0.760	0.444				
5'	0.000	1.761	0.800	94.517	53.223	0.800
SUM						
S1	0.000	1.217	0.000	94.517	77.675	-0.001
S2	-0.001	1.127	0.000	94.517	83.782	0.125
S3	-0.129	1.219	0.000	94.517	70.092	0.058
S4	-0.005	1.251	0.000	94.517	75.297	0.350
S5	-0.037	1.203	0.000	94.517	76.257	2.797
S6	0.000	1.265	0.000	94.517	74.739	-0.001
S7						
S8						

Internal Reference Calibration, performed (Not Performed):

	Raw (v)		Calibrated (v)		Results	
	Zero	Cal	Zero	Cal	Gain	Offset
CAL	0.000	0.000	0.760	0.444	1.000	0.000

Air Zero Calibration, performed Thu Oct 17 13:10:56 2024:

	Raw (v)		Calibrated (v)		Results	
	Zero		Zero		Offset	
3'	0.000		0.000			0.000
5'	0.000		0.000			0.000
SUM						
S1	0.000		0.000			0.000
S2	0.000		0.000			0.000
S3	0.000		0.000			0.000
S4	0.000		0.000			0.000
S5	0.000		0.000			0.000
S6	0.000		0.000			0.000
S7						
S8						

Temperature Calibration Report

Serial Number: ICE-J4-02
 Tool Model: 169 TekCo w Temp
 Performed: Thu Feb 01 13:01:23 2018

	Reference	Reading
Low Reference:	0.00 degF	0.00 usec
High Reference:	1.00 degF	1.00 usec

Gain: 0.33
 Offset: 0.00
 Delta Spacing: 1



Company	CHEVRON
Well	SPOMER 32-16H6
Field	Wattenberg
County	Weld
State	Colorado