

Site Specific Final Reclamation Completion Notice – Land Use Change Drone Imagery

Permit Closure Report – Designation Land Use Change - Industrial/Commercial

Location ID: 322729

Location Name: Bliss #1

Report Date:

12/13/2024

HWA Wildlife Consulting has reviewed the data provided in this report. This report was developed in accordance with the *ECMC Operator Guidance - operator supplied cropland drone imagery and information for submitting a final reclamation complete notice.*

Land Use:

2023-Industrial/Commercial

2024-Industrial/Commercial

Quality Assurance & Quality Control Audit:

Performed by	HWA Wildlife Consulting, LLC
Audit Date	22 July 2024



Prepared by:

*HWA Wildlife Consulting, LLC
2308 South 8th Street
Laramie, WY 82070
www.hwa-wildlife.com
(307) 742-5440*

Location Checklist:

Operator/#	PDC Energy INC #69175		
Location ID & Name	322729 & BLISS-65N65W/3SWSE		
County	Weld County, CO		
Well Information	Well Name: Bliss #1		
	Well API#: 05-123-11955		
	Lat/Long as Drilled: 40.421944/-104.647500		
	Plug Date & Form 6S Doc #: 10/23/2018 & 401841657		
Facility Entities	X	Tank Battery	Pits
	X	Well	X On-location Flowlines Form 42 Doc #: 401879769
		Domestic Taps	X Off-location Flowlines Form 44 Doc #: 403906126
Equipment On-site	X	None	Debris
		Pit mouse/rat holes, cellars backfilled	
Access Road	X	Regraded	X Contoured
	NA	Culvert removed	X Gravel removed
		Pre-Existing: must provide supporting documentation	
Reclamation Status	X	Location and associated disturbances reclaimed	
		Subsidence	
Spills or Releases (Form 19)	X	No	Yes
Site Investigation and Remediation Workplan (Form 27/27A)	X	No	Yes
On-Location Flowlines		No	X Yes
Off-Location Flowlines		No	X Yes
Inspection Corrective Actions		No	X Yes
Sundry Notice	No Sundry Notice (Form 4) related to 900-1200 Series Rules were identified.		
Drone Information	Make and Model		DJI Phantom 4 Pro & WM331S
	Image Processing Software		Drone Deploy
	Pilot Name & FAA Certification #		Emily Schmidt & 5021087
	Date of FAA Certificate Issuance		24 June 2024

Location Summary:

Name	BLISS-65N65W/3SWSE		
Location ID	322729		
Operator/#	PDC ENERGY INC/69175		
Field	GREELEY/32760		
County, State	Weld, CO		
Lat/Long	40.422295/-104.64734		
	X	Planned location	As Drilled
Facility Status	CL	Location	SWSE 3 5N65W
Facility Status Date	10/23/2018		
Facility Entities	X	Tank Battery (off-Site)	Pits
	X	Wells	X On-Location Flowlines
		Domestic Taps	X Off-Location Flowlines
		Electric Utilities	
Equipment On-site	X	No	Yes
		Pit mouse/rat holes, cellars backfilled	
Access Road	X	Regraded	X Contoured
	NA	Culvert removed	X Gravel Removed
		Pre-existing: must provide supporting documentations	
Environmental Incident and Remediations	X	None	Spill or Release (Form 19)
		Remediation (Form 27/27A)	
Variance Requests	No variances were identified		
Inspection Corrective Actions (CA)s	Corrective action identified (see closure information)		
Sundry Notice (Form 4)	No Sundry Notice (Form 4) related to 900-1200 Series Rules were identified.		
On-Location Flowlines (Form 42)	The on-location flowline was abandoned on 11/05/2018. Abandonment notice was given under Form 42 (401879769)		
Off-Location Flowlines (Form 44)	Abandonment Doc # 403906126. It is PDC's belief that this flowline was properly abandoned according to the regulations in effect at the time of the abandonment. PDC has diligently searched their records in order to provide all documentation that is available.		
Site Investigation and Remediation Workplan (Form 27/27A)	No Form 27 was identified		
Spill or Release (Form 19)	No Form 19 was identified		
Field Inspection Form (Form INSP)	Form Inspection Doc # & Date: 708201208 & 5/07/2024 <ul style="list-style-type: none"> ○ Status Summary: Follow-up inspection required ○ Inspection facilities: BLISS #1 		

	<ul style="list-style-type: none"> ○ Inspection Date and Inspector: 04/26/2024 & Edwardson, Dylan ○ Notes: ECMC Staff unable to find documentation of a remediation project for facility decommissioning per Rule 911.a. Operator shall provide documentation or submit Form 27 for facility closure.
COGIS Tank Facilities Information (Scout Card)	No tank battery scout card or documents were detected.
COGIS Well Information (Scout Card)	Well Name: BLISS #1 Facility ID: 244162 Status and Date: PA & 10/23/2018 Lat/Long as Drilled: 40.421944/-104.647500

Site Description:

Audit Key Findings – Designation Land Use Observations

PREVIOUS LAND USE	CURRENT LAND USE
Reference imagery for infrastructure: NAIP 2011	Remote sensed Imagery: 07/22/2024
Designation: Oil and Gas Facility	Designation: Industrial/Commercial

The following imagery sources were reviewed during this Investigation:

NAIP Imagery 2005, 2006, 2009, 2011, 2013, 2017, 2019, and 2023.

Closure Information:

The Bliss #1 well (API # 05-123-11955) is located in Weld County, Colorado near the intersection of E 8th Street and Fern Ave. The well was plugged and abandoned on October 23rd, 2018. The associated on-location flowline was abandoned on November 5th, 2018. The associated off-location flowline was abandoned on October 23rd, 2018. The Bliss #1 well and associated tank battery are located in an industrial storage yard. Both the tank battery and well will be passed in this report.

There were no documented spills/releases or remediation projects in COGIS related to the Bliss #1 well or the associated tank battery. Form INSP (Doc # 708201208) states that ECMC Staff was unable to find documentation of a remediation project for facility decommissioning per Rule 911.a. The corrective action states that the operator must provide documentation or submit Form 27 for facility closure. However, FIR Resolution Form (Doc # 403812452) states that the facility was closed in 2018, prior to the 2021 911.a rule requiring notification of closure operations, therefore the corrective action is complete.

Drone imagery confirms that no equipment remains after reclamation activities. The imagery also shows no disturbances from the well, flowlines, tank battery, or access road. Both the well location and associated tank battery have been compacted and stabilized in such a way as to minimize erosion and to support the industrial lot.

Drone information:

Make	DJI Phantom Pro
Model	WM331S
Image Processing Software	Drone Deploy
Pilot Name	Emily Schmidt
Pilot Certification Number	5021087
Date of FAA Certification Issuance	24 June 2024

Location Overview:

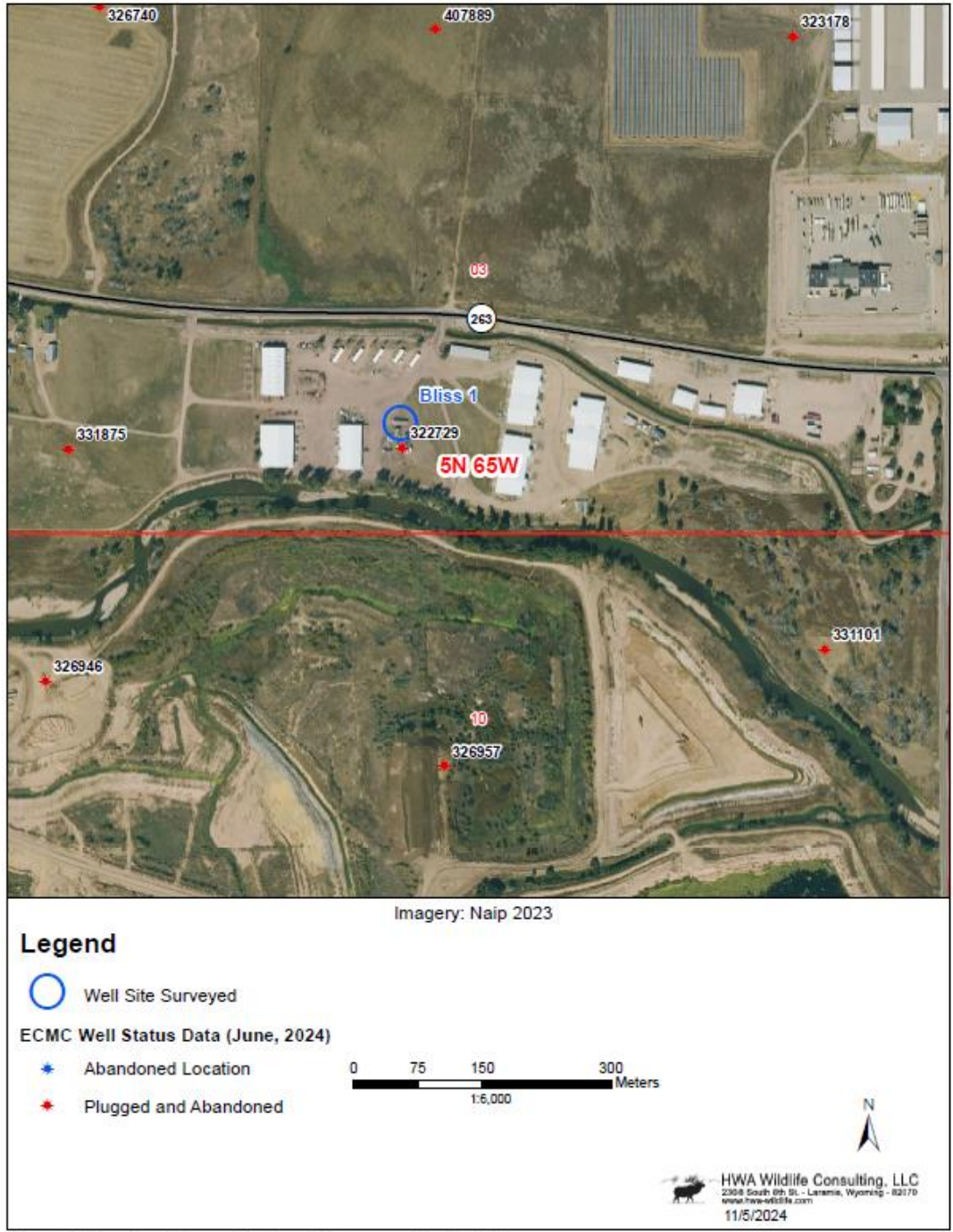


Figure 1. Overview of the reclaimed well site surveyed during 2024.

Pre-Plugging Active Operation Location Overview:

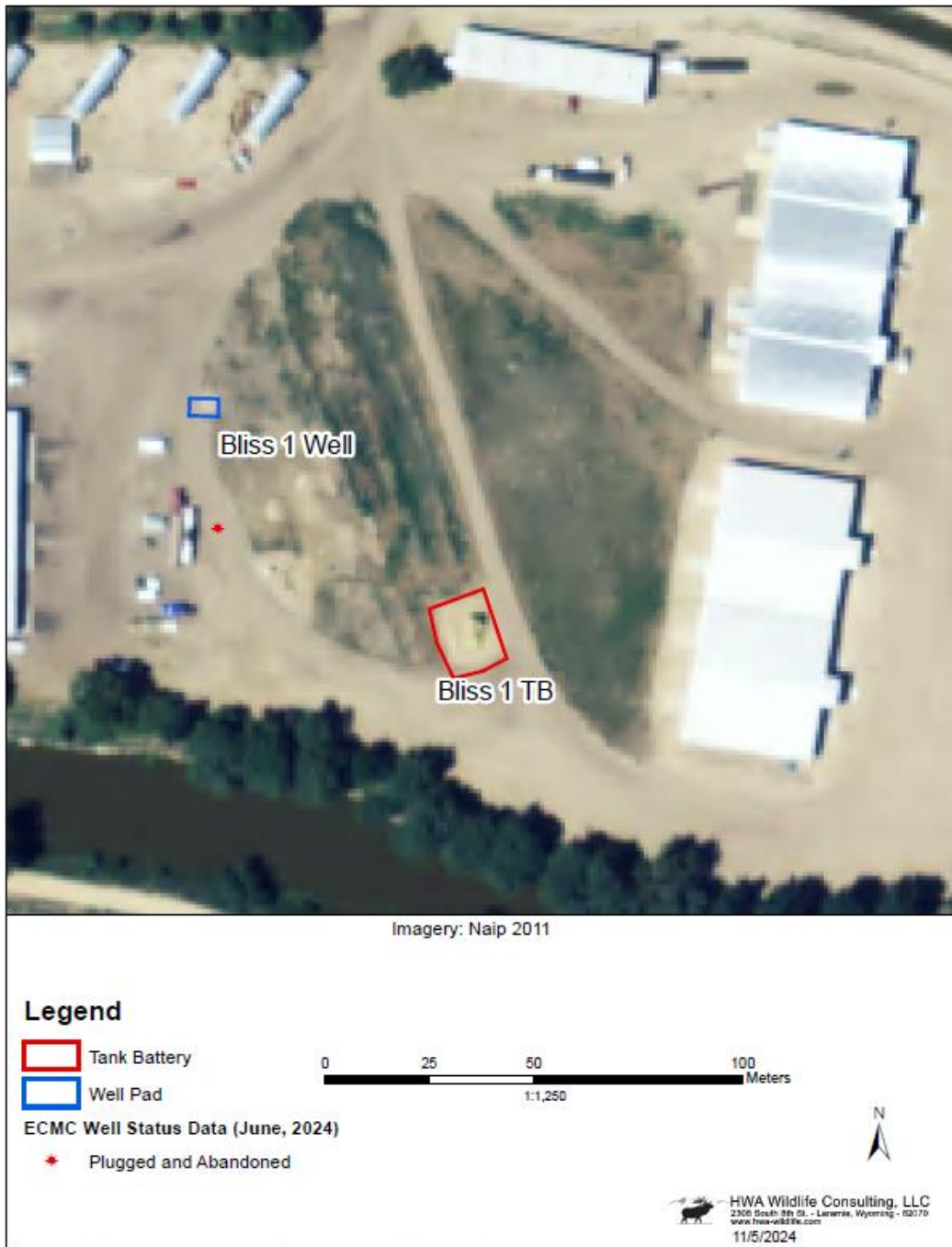


Figure 2. Pre-plugging overview of the reclaimed well site and the associated access road, tank battery, and flowline.

Post-Plugging and Abandonment Location Overview:

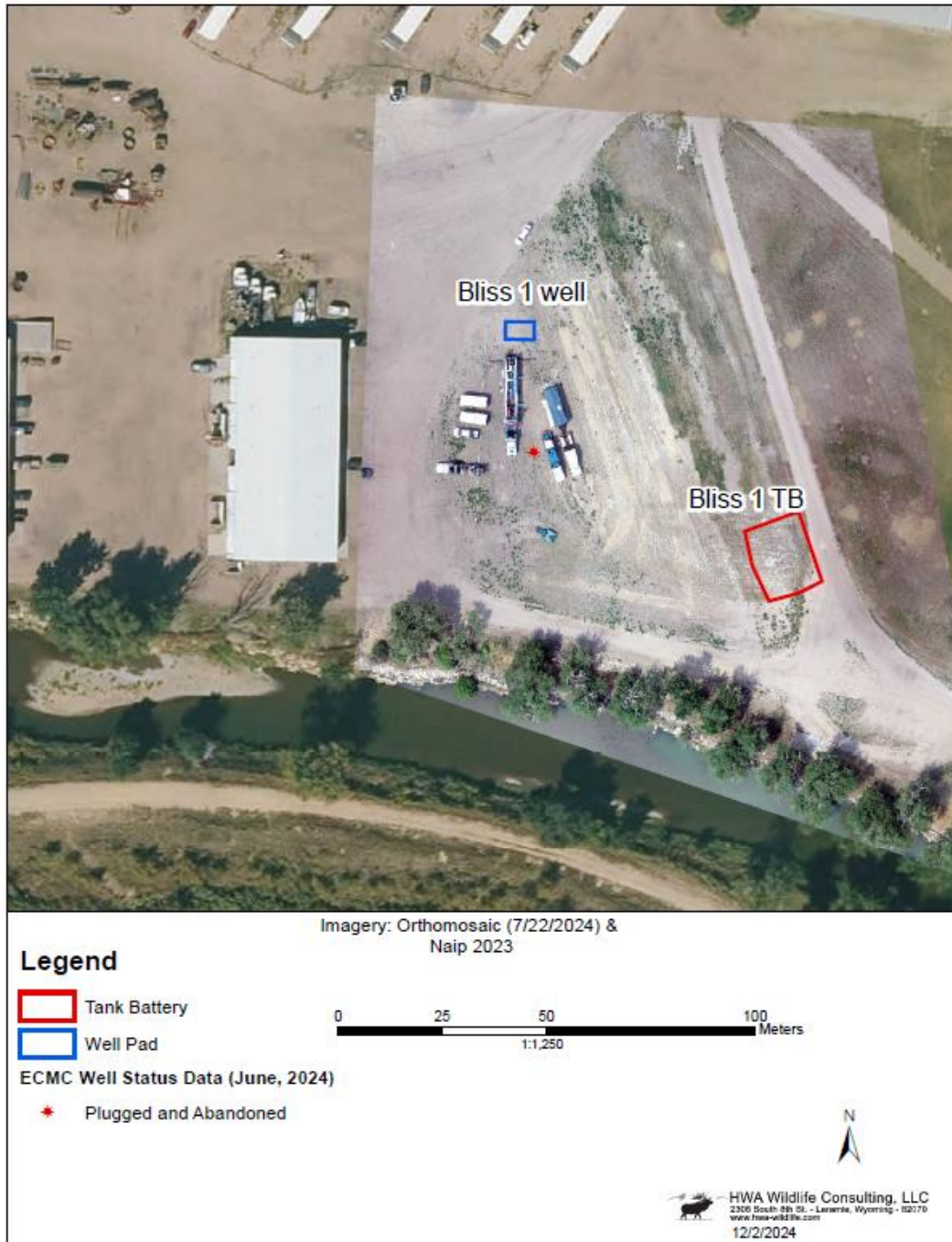


Figure 3. Post-plugging overview of the reclaimed well site and the associated access road, tank battery, and flowline.

Cardinal Directional Drone Photos and Reference Area Photos (7/22/2024):

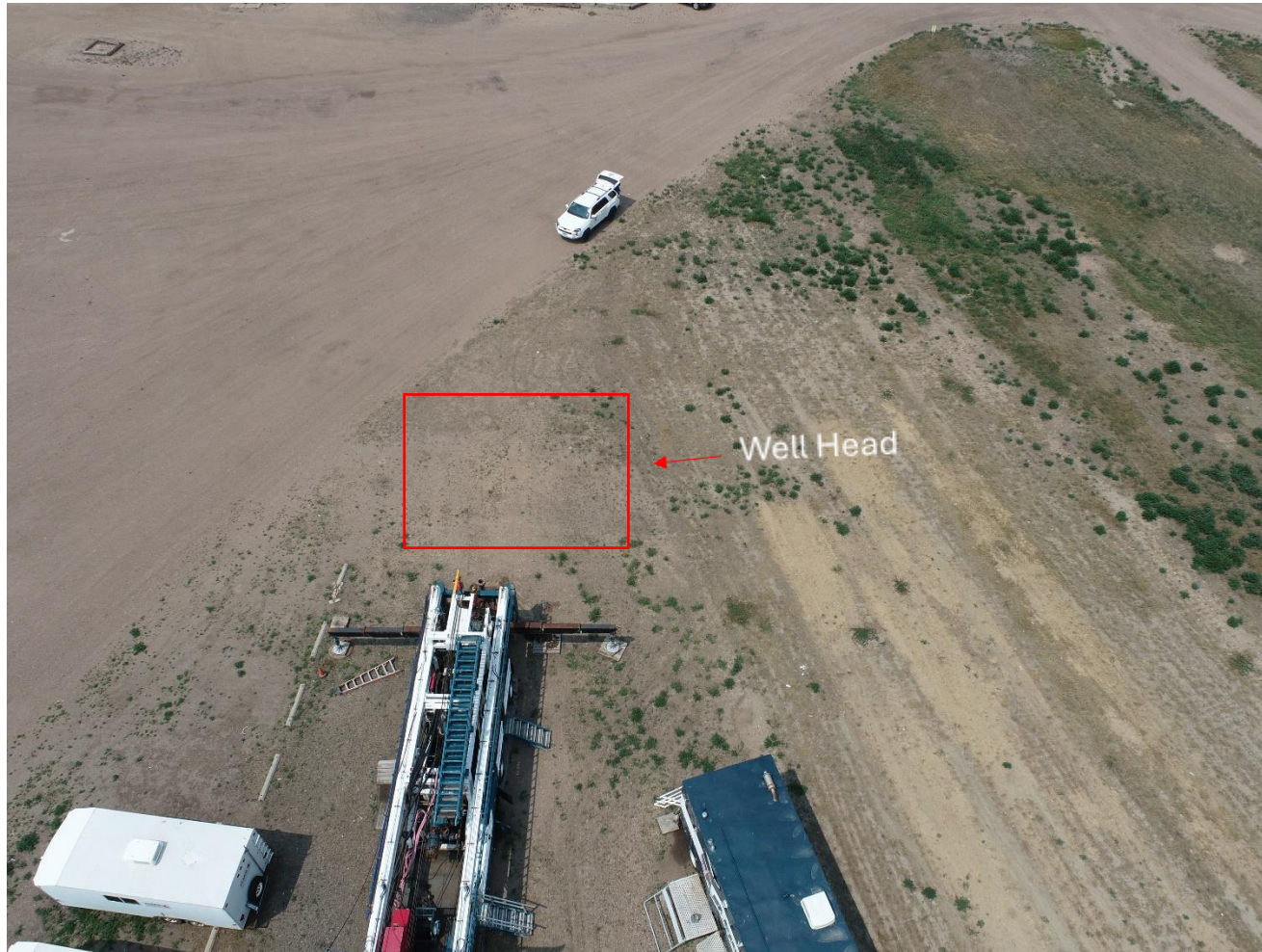


Figure 4: Looking North towards well, 100 feet in height, Lat/Long: 40.421956/-104.647501.

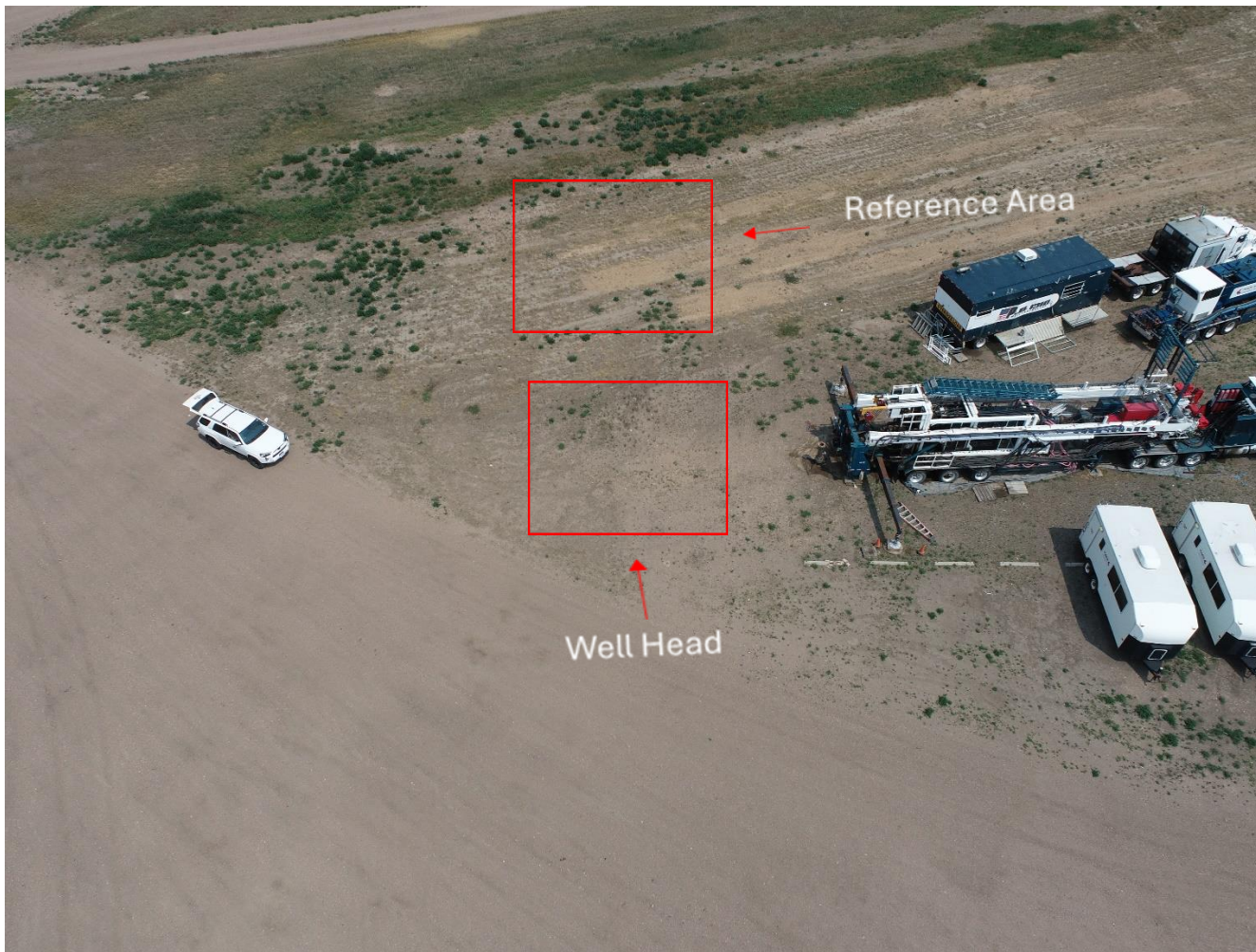


Figure 5: Looking East towards well and reference area, 100 feet in height, Lat/Long: 40.422263/-104.647959.



Figure 6: Looking West towards well and flowline, 100 feet in height, Lat/Long: 40.421652/-104.646307.

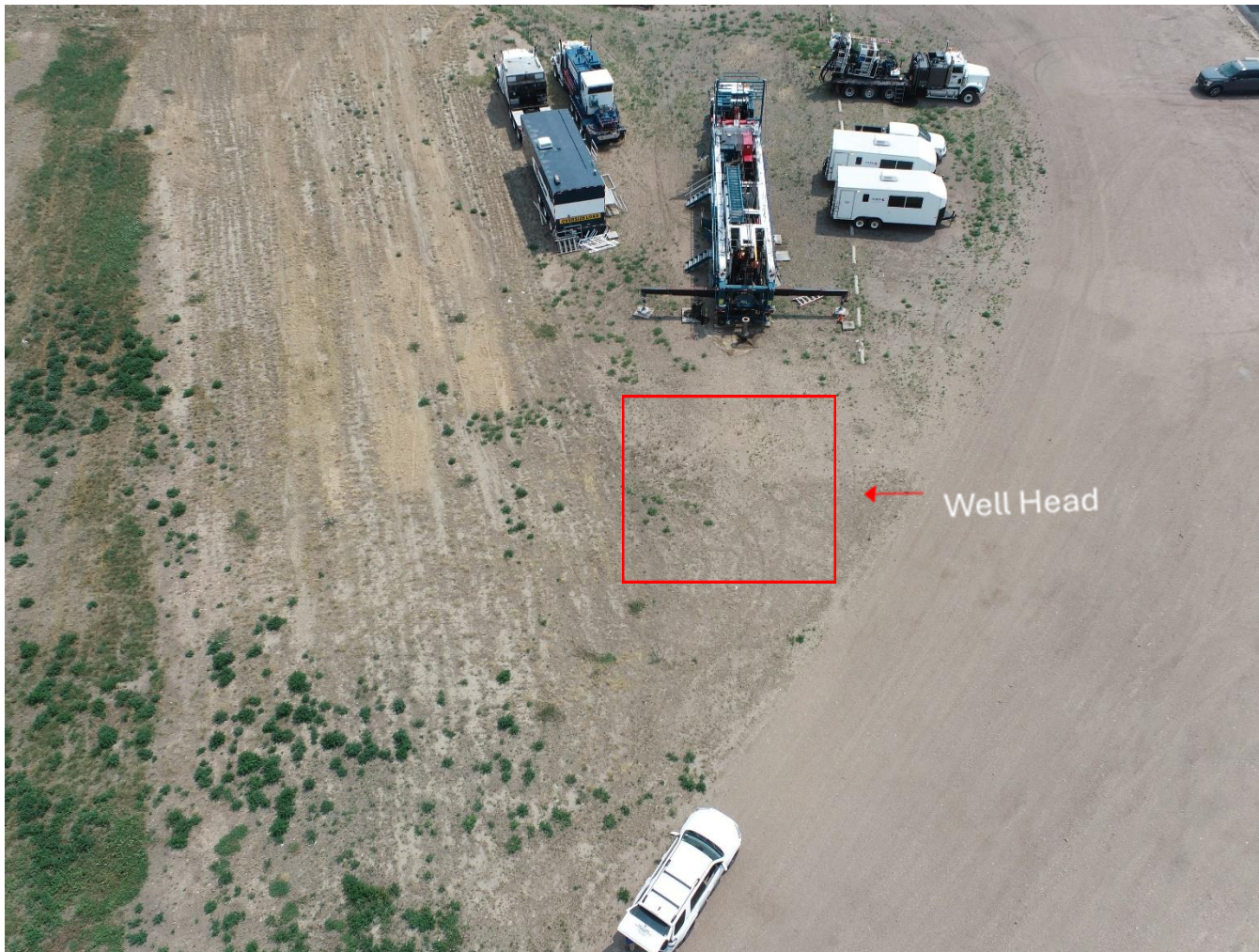


Figure 7: Looking South towards well, 100 feet in height Lat/Long: 40.422523/-104.647529.

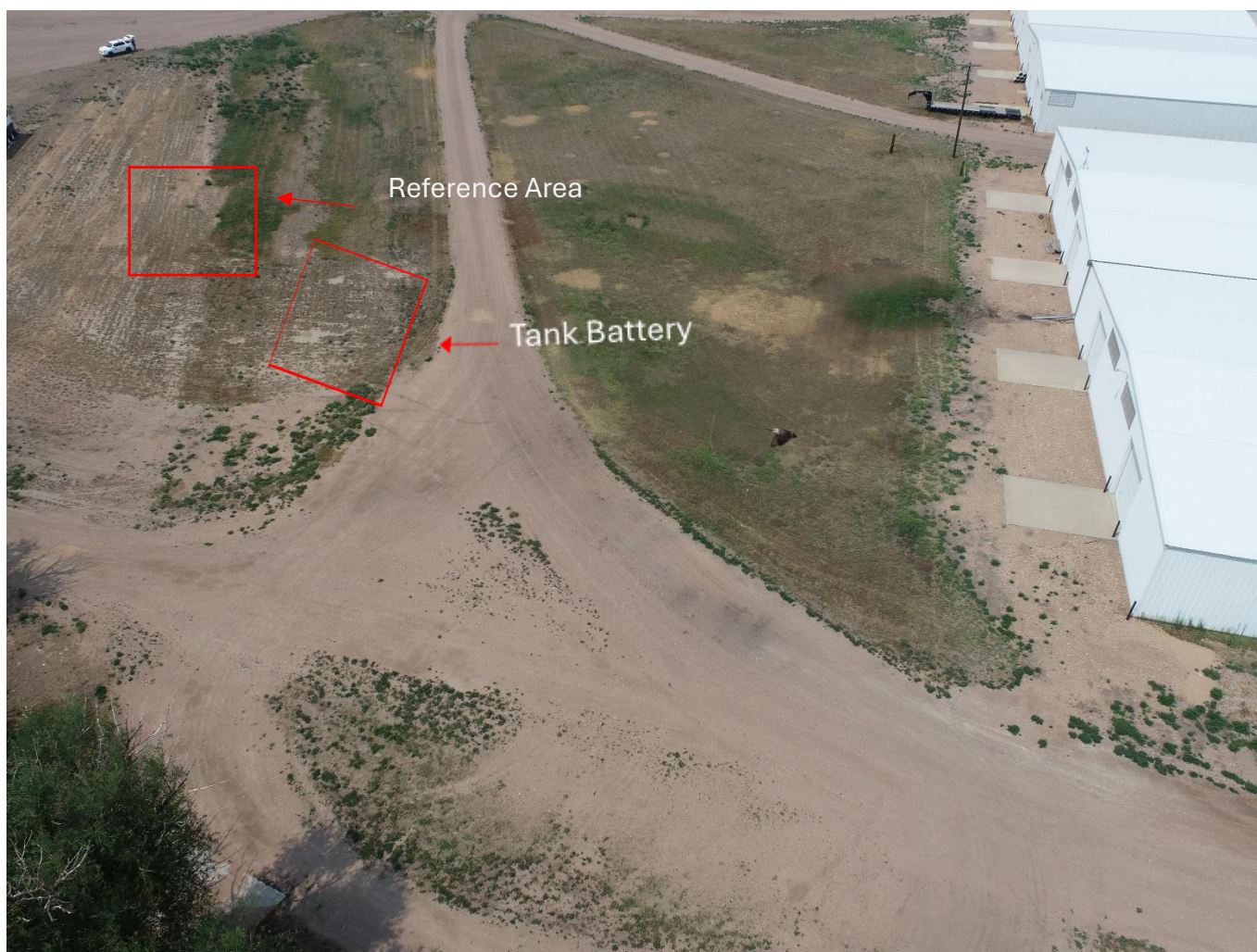


Figure 8: Looking North towards TB and reference area, 100 feet in height, Lat/Long: 40.421141/-104.646477.



Figure 9: Looking East toward TB, 100 feet in height, Lat/Long: 40.421675/-104.647184.



Figure 10: Looking West toward TB, 100 feet in height, Lat/Long: 40.422296/-104.647283.



**Figure 11: Looking South towards TB, 100 feet in height, Lat/Long: 40.422009/-104.646799.
Ground Photos (7/22/2024):**



Figure 12: North edge of well looking South.



Figure 13: East edge of well looking West.



Figure 14: South Edge of well looking North.



Figure 15: West edge of well looking East.



Figure 16: Noth edge of TB looking South.



Figure 17: East edge of TB looking West.



Figure 18: South edge of TB looking North.



Figure 19: West Edge of TB looking East.