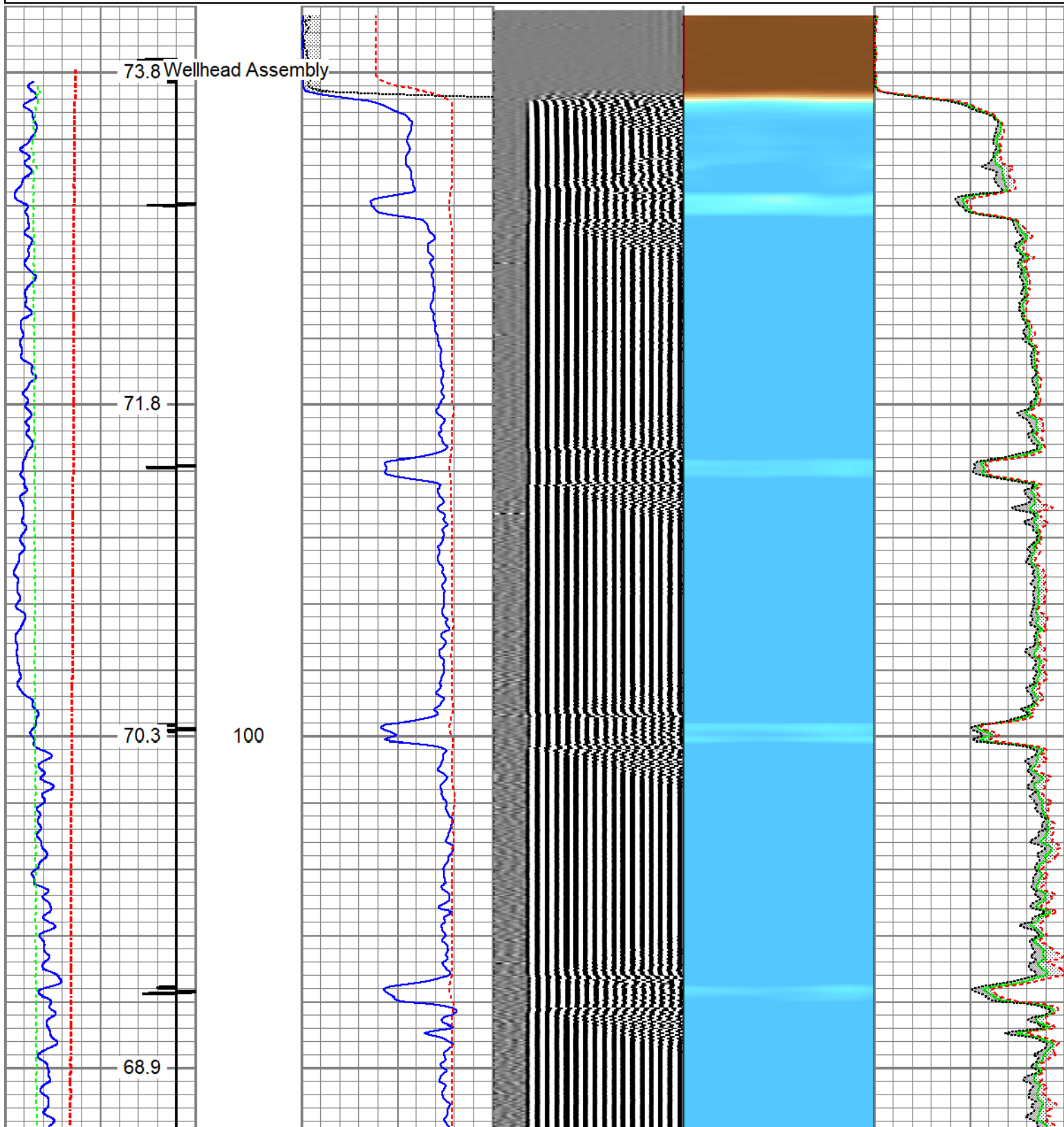
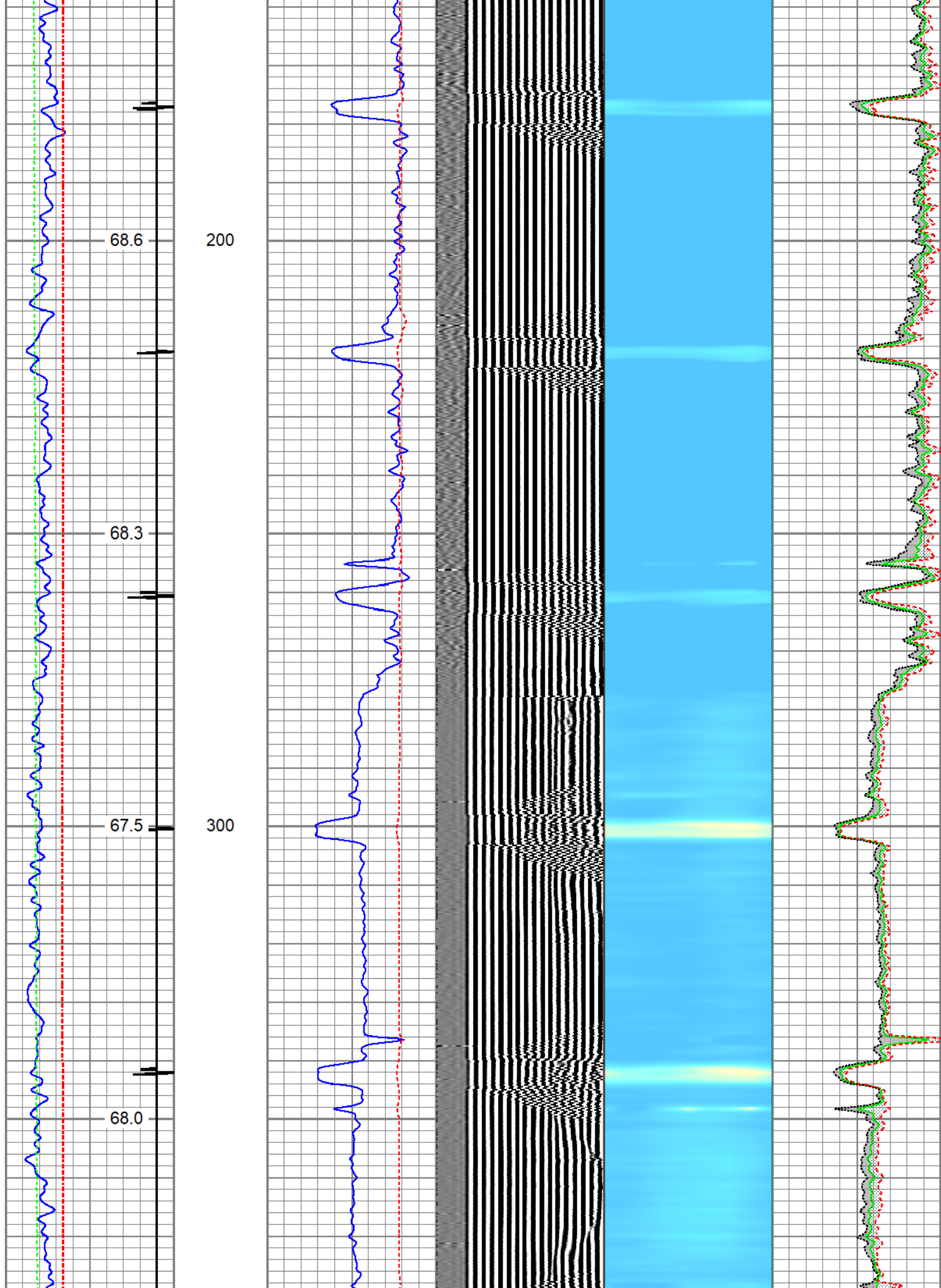


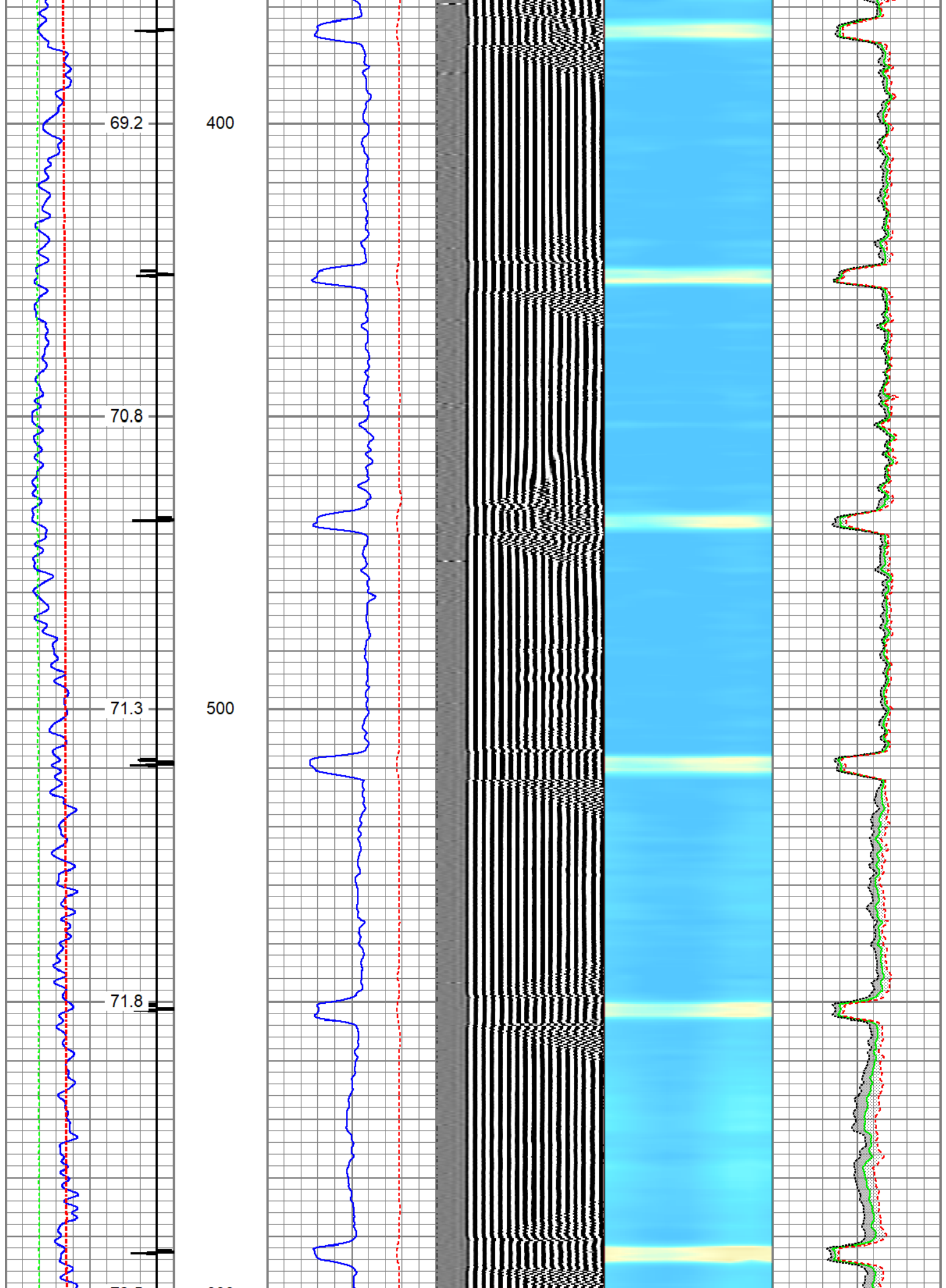


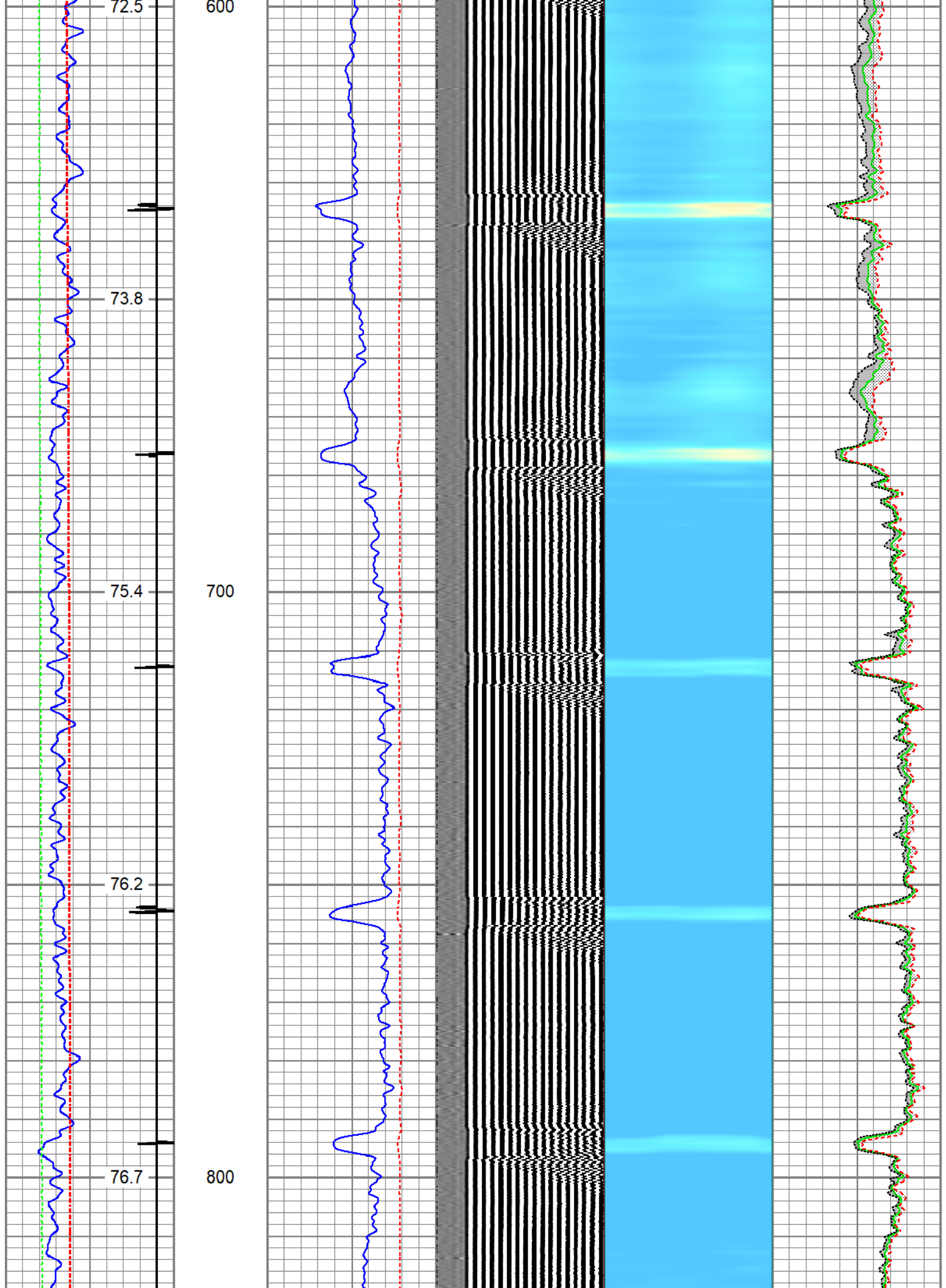
Database File fram\_mansur\_33-1-g\_owp\_rcbl.db  
 Dataset Pathname main.1  
 Presentation Format twgrcbl  
 Dataset Creation Tue Jun 18 17:26:48 2024  
 Charted by Depth in Feet scaled 1:240

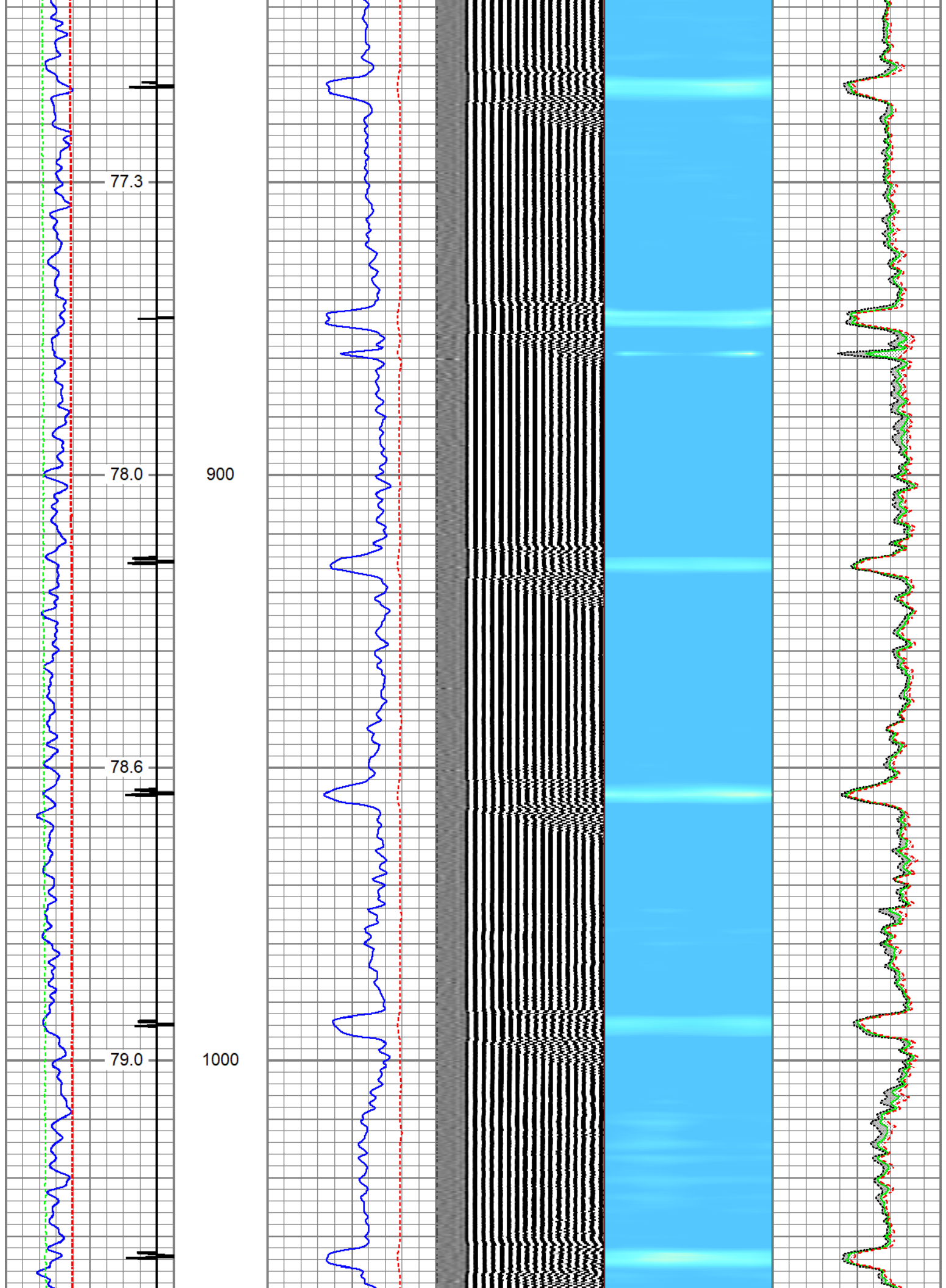
Gamma Ray (GAPI)	3' Amplitude (mV)	5' Variable Density Log (usec)	Sector Map	Average Amplitude
0 150	0 100	200 1200		0 120
Line Tension (lb)	3' Amplitude x 5 (mV)			Minimum Amplitude
0 2000	0 20			0 120
-9 CCL\$1	3' Travel Time (usec)			Maximum Amplitude
0 200	650 150			0 120

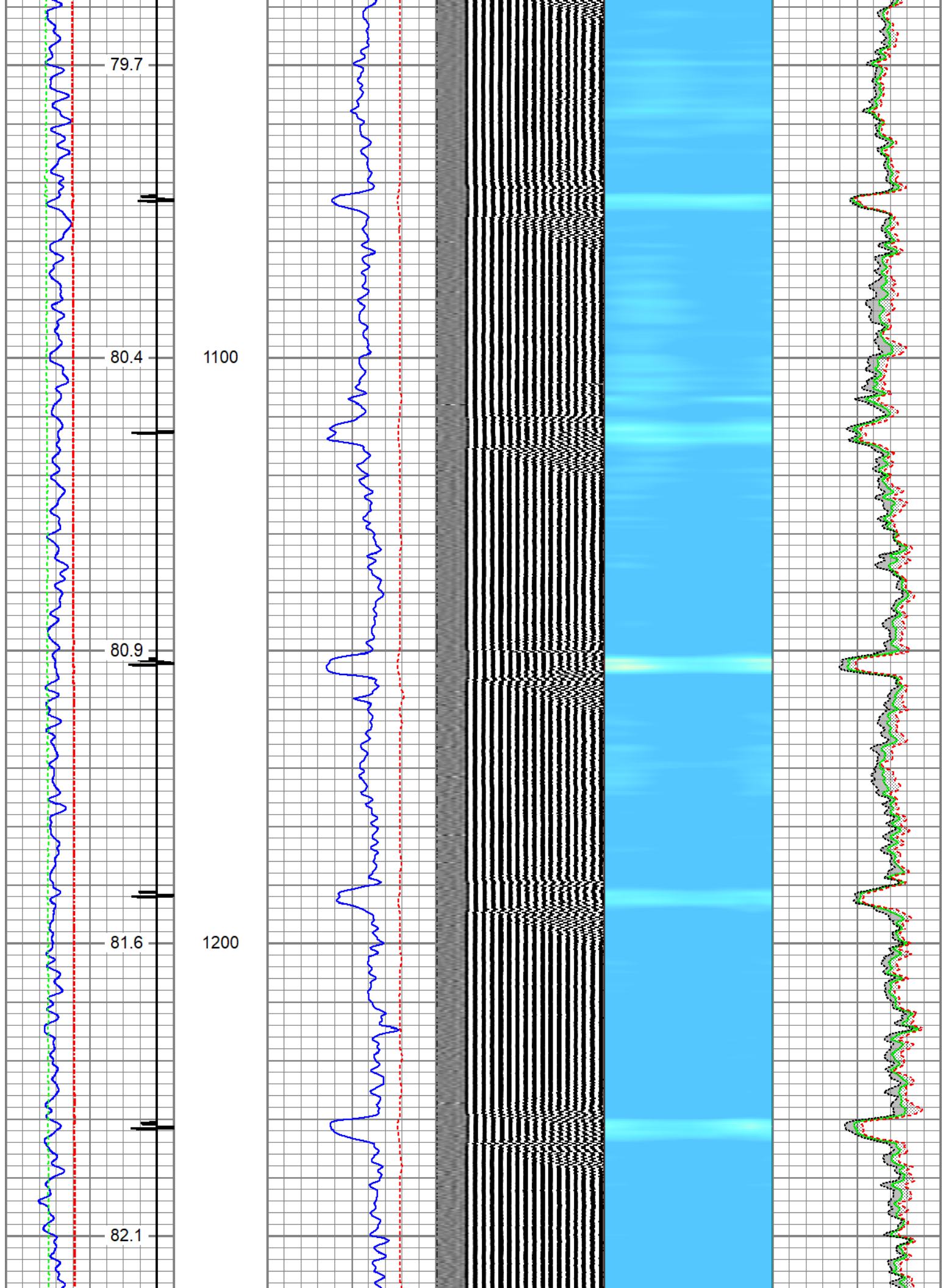


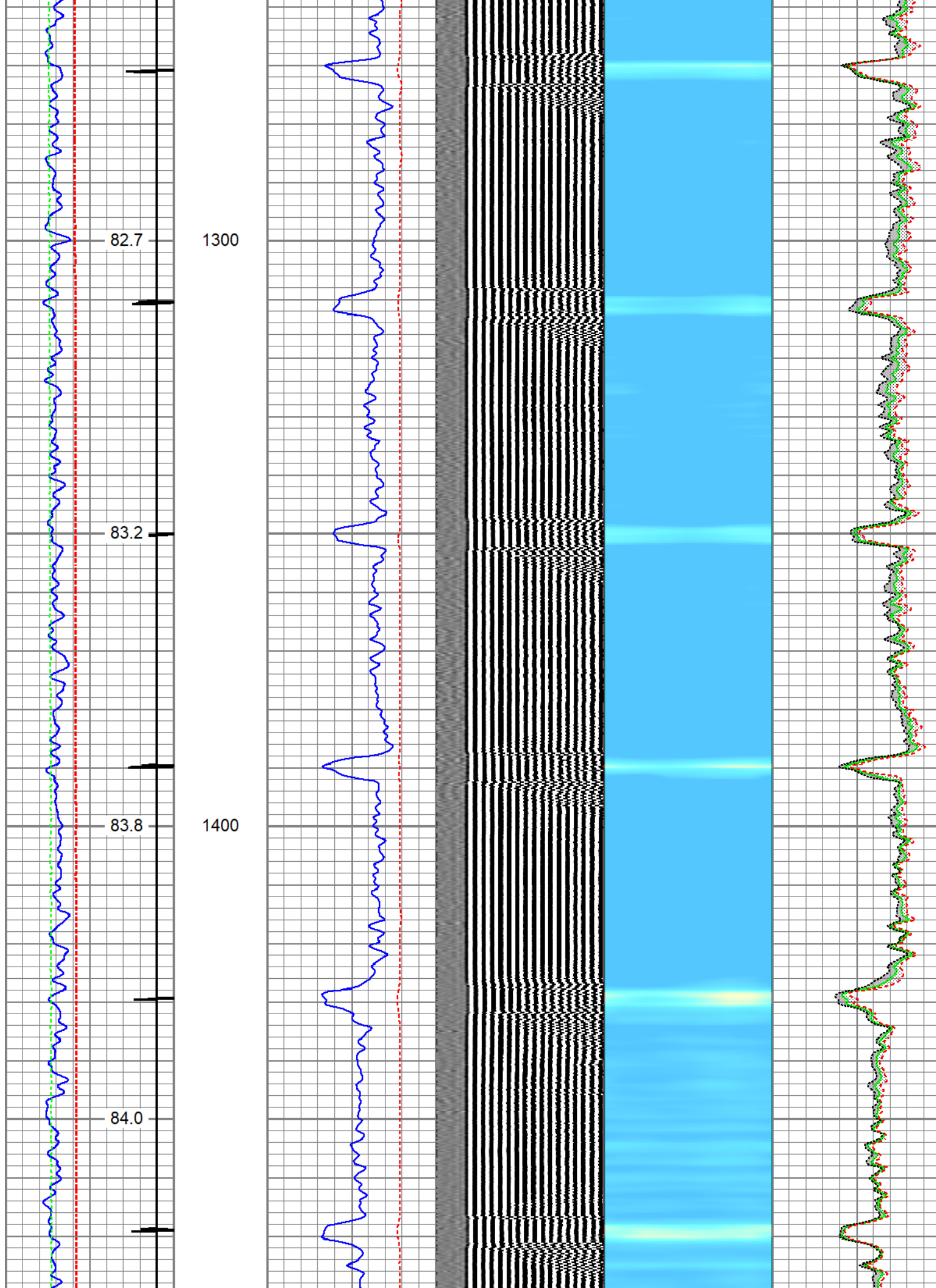




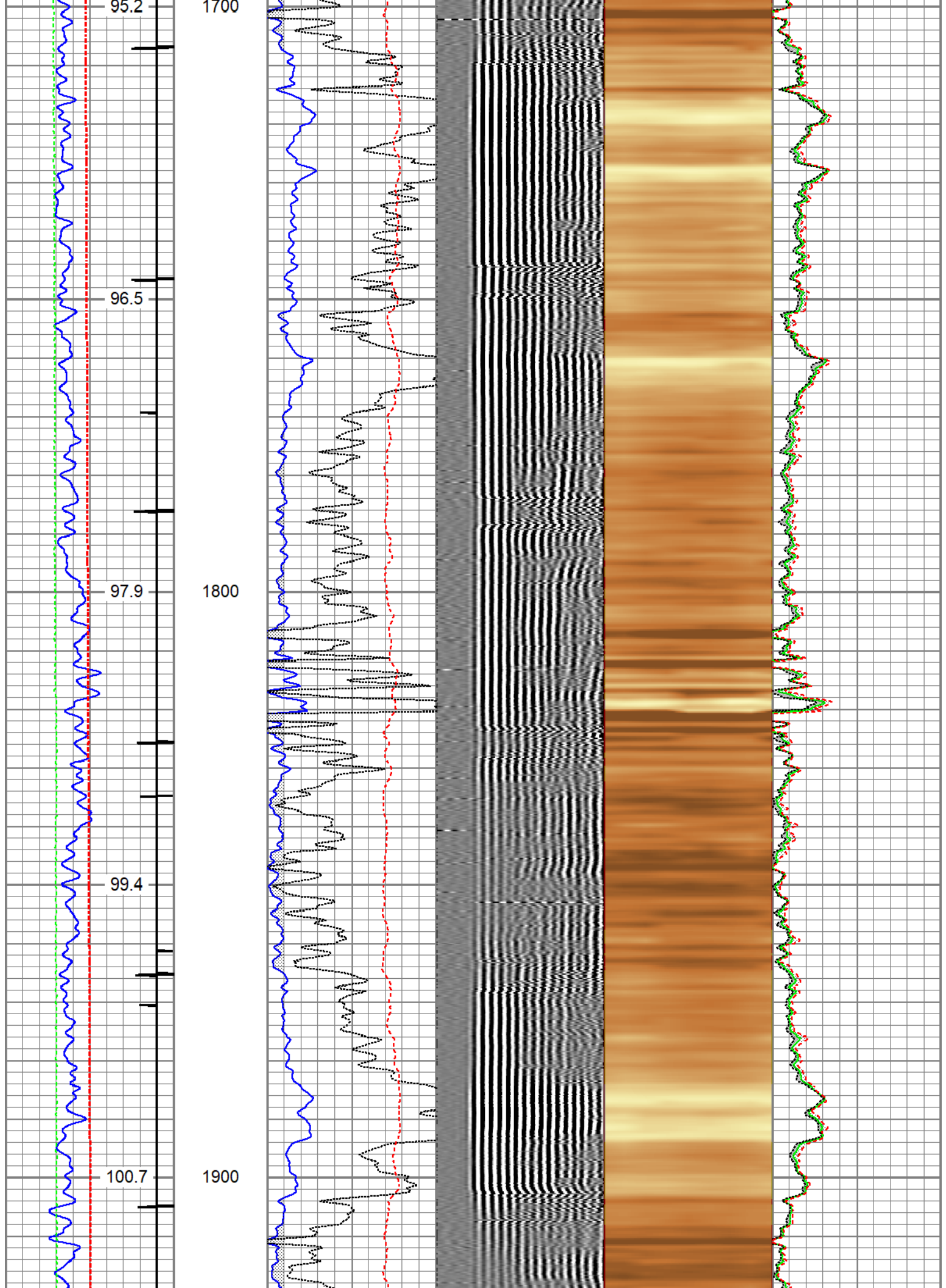


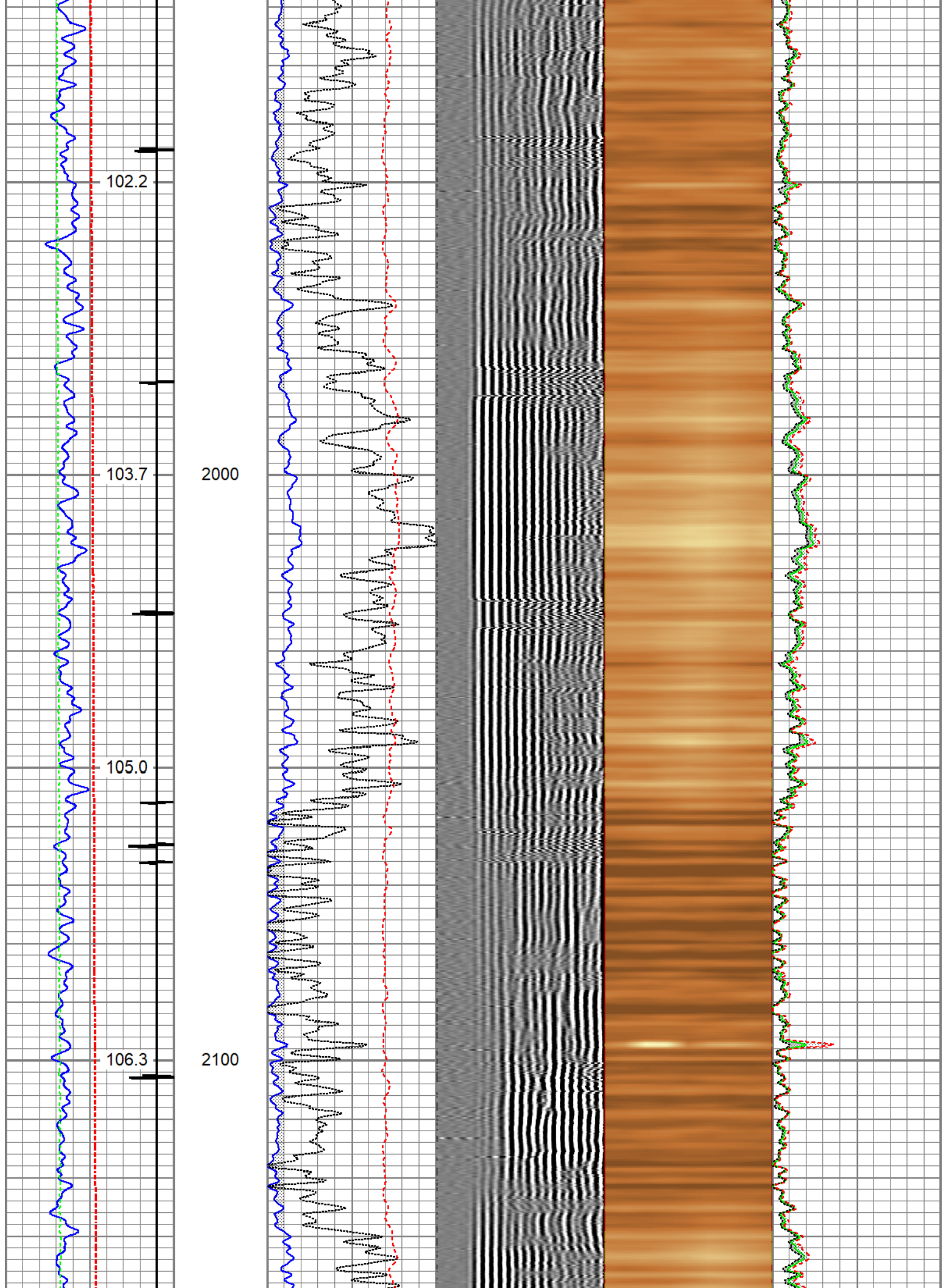


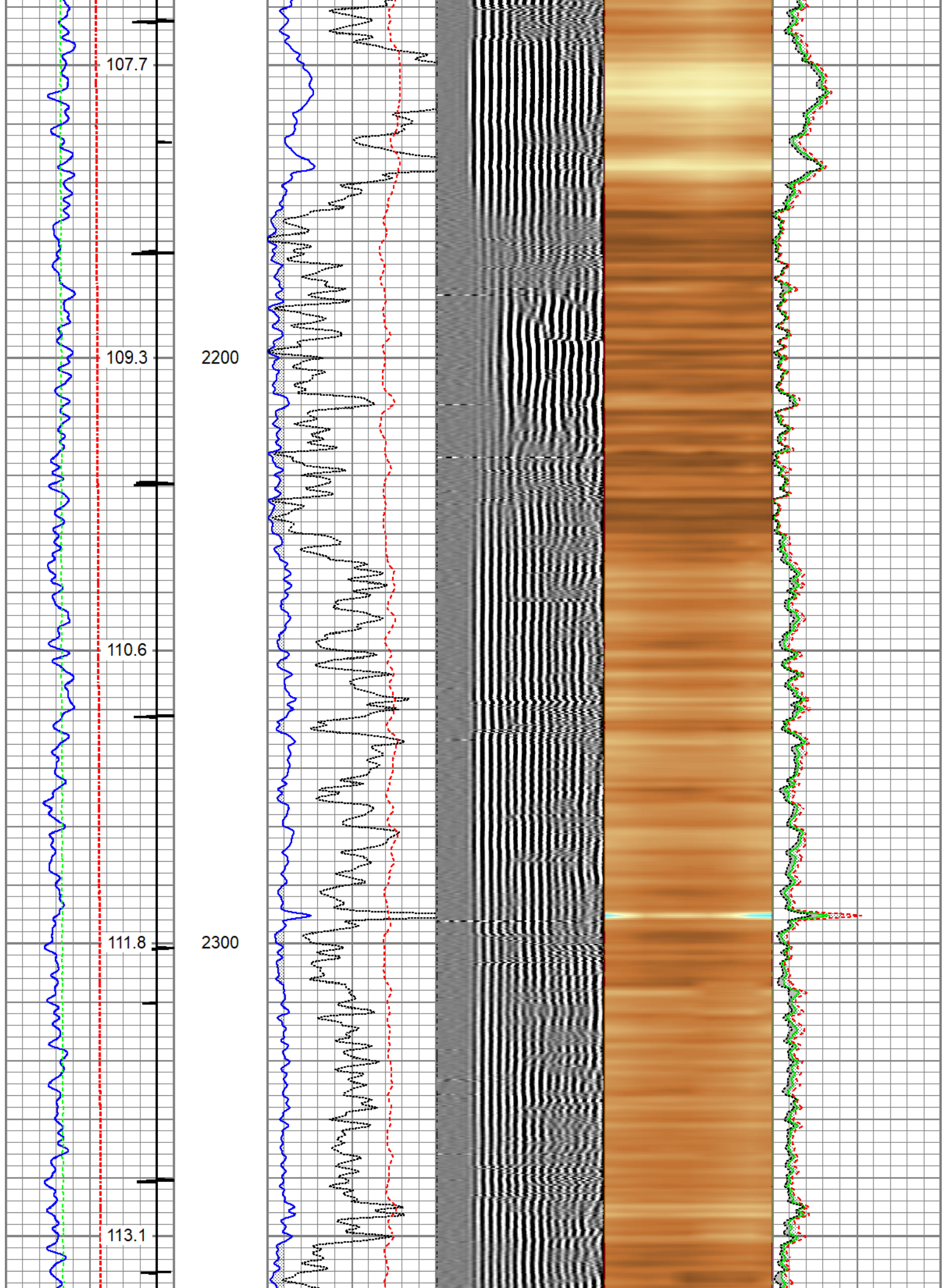


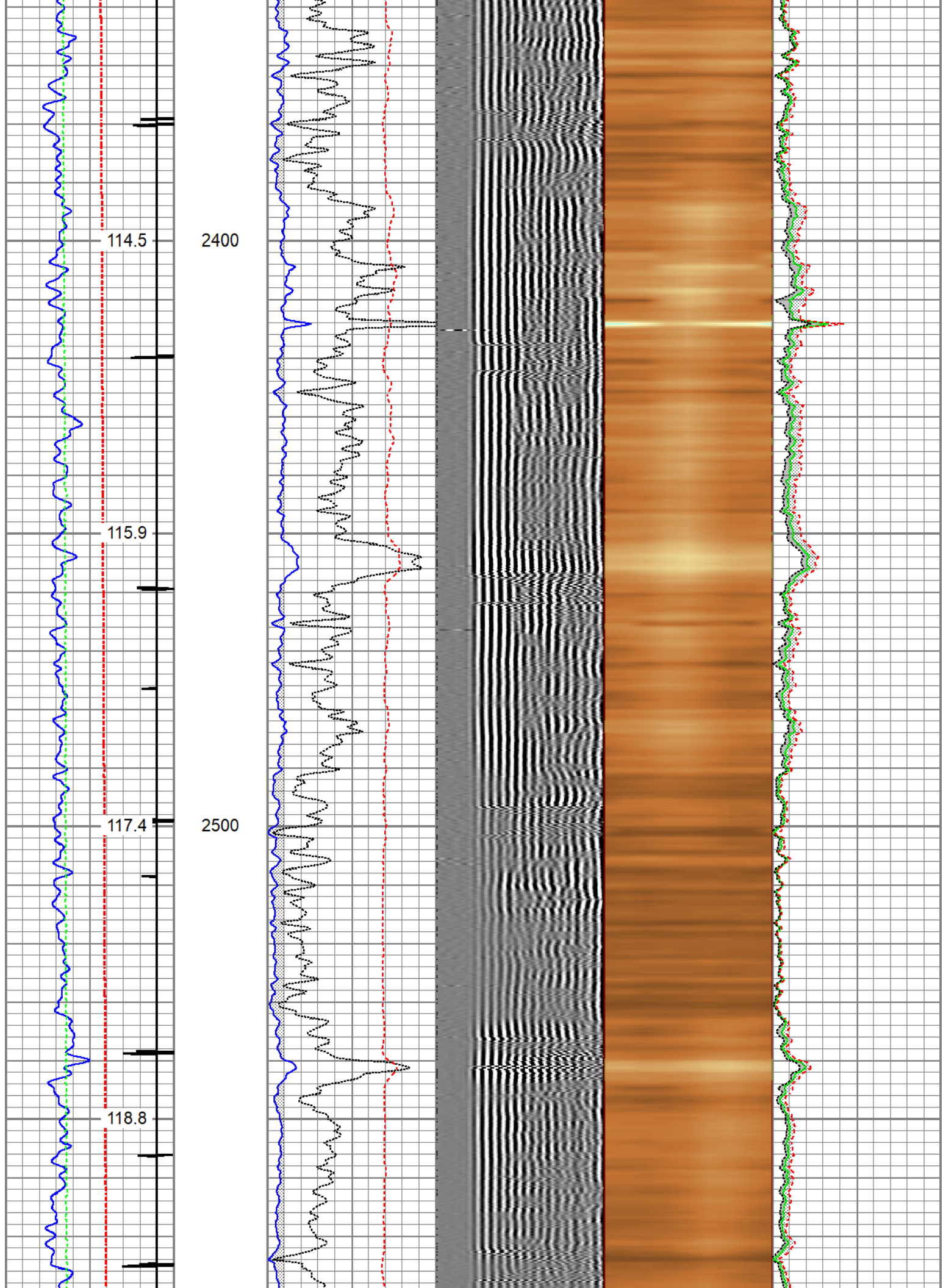


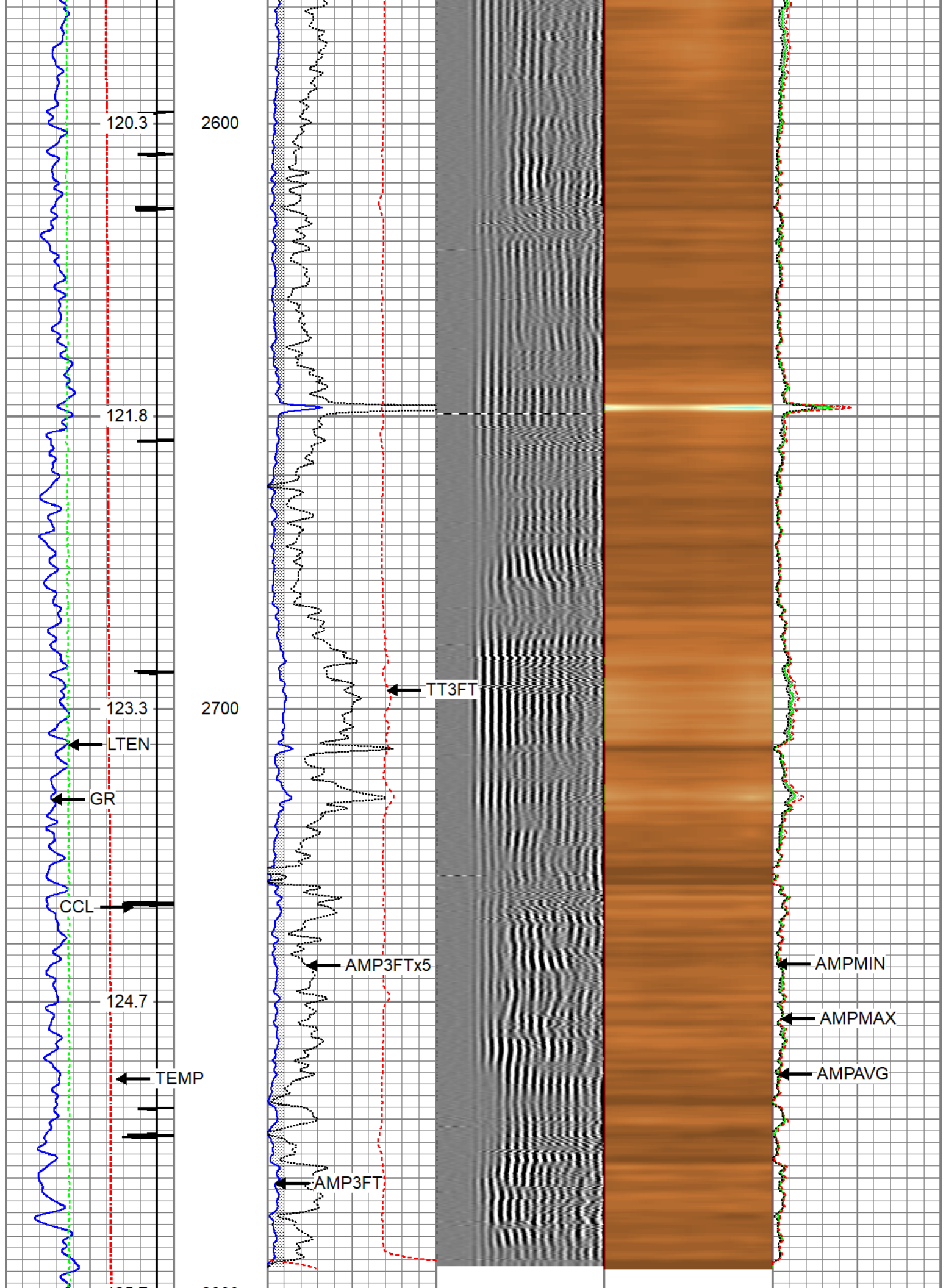












Gamma Ray 0 (GAPI) 150	2800	3' Amplitude 0 (mV) 100	5' Variable Density Log 200 (usec) 1200	Sector Map	Average Amplitude 0 120
Line Tension 0 (lb) 2000		3' Amplitude x 5 0 (mV) 20			Minimum Amplitude 0 120
-9 CCL\$1 1		3' Travel Time 650 (usec) 150			Maximum Amplitude 0 120
0 Temp (degF) 200					

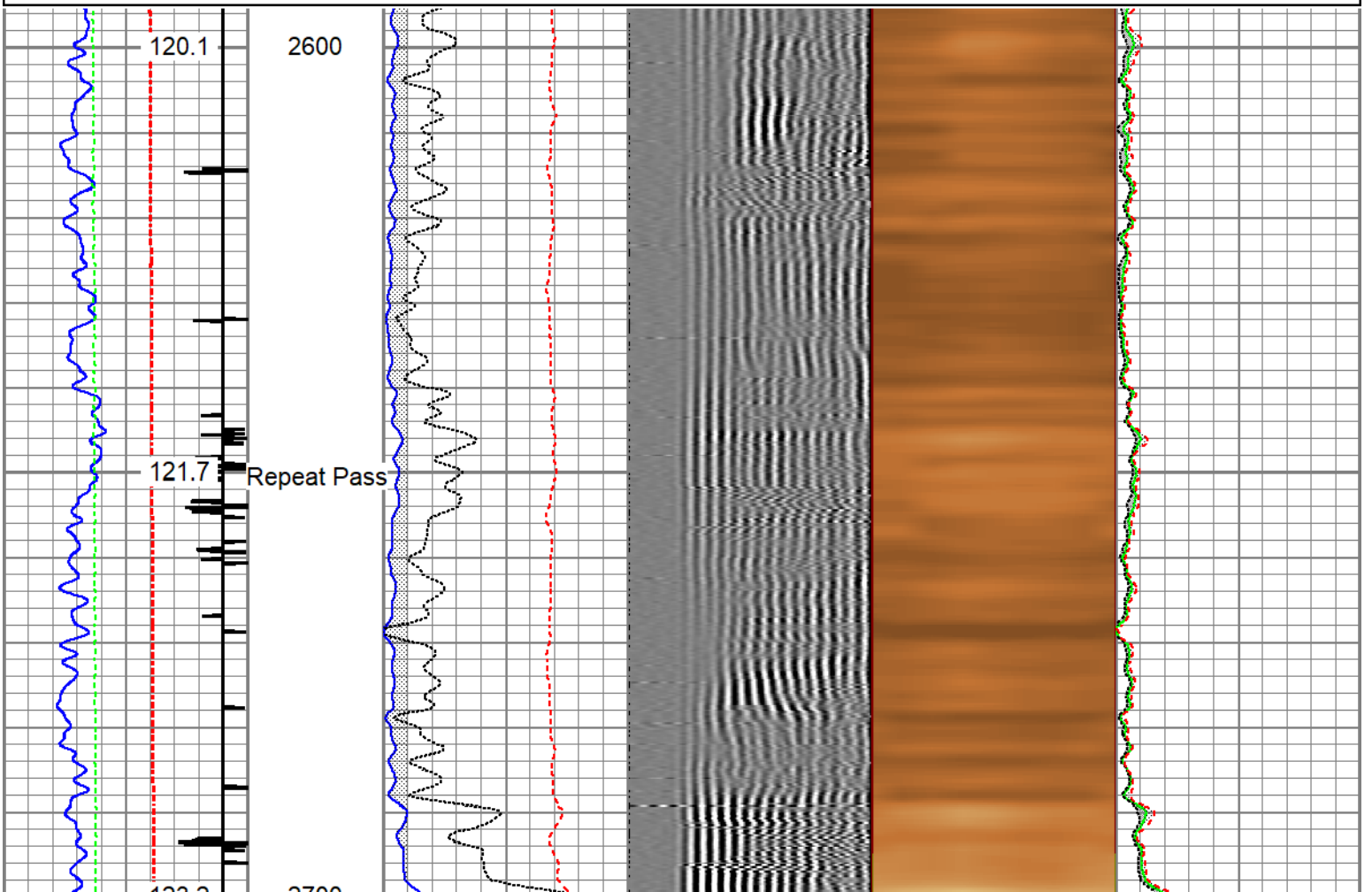


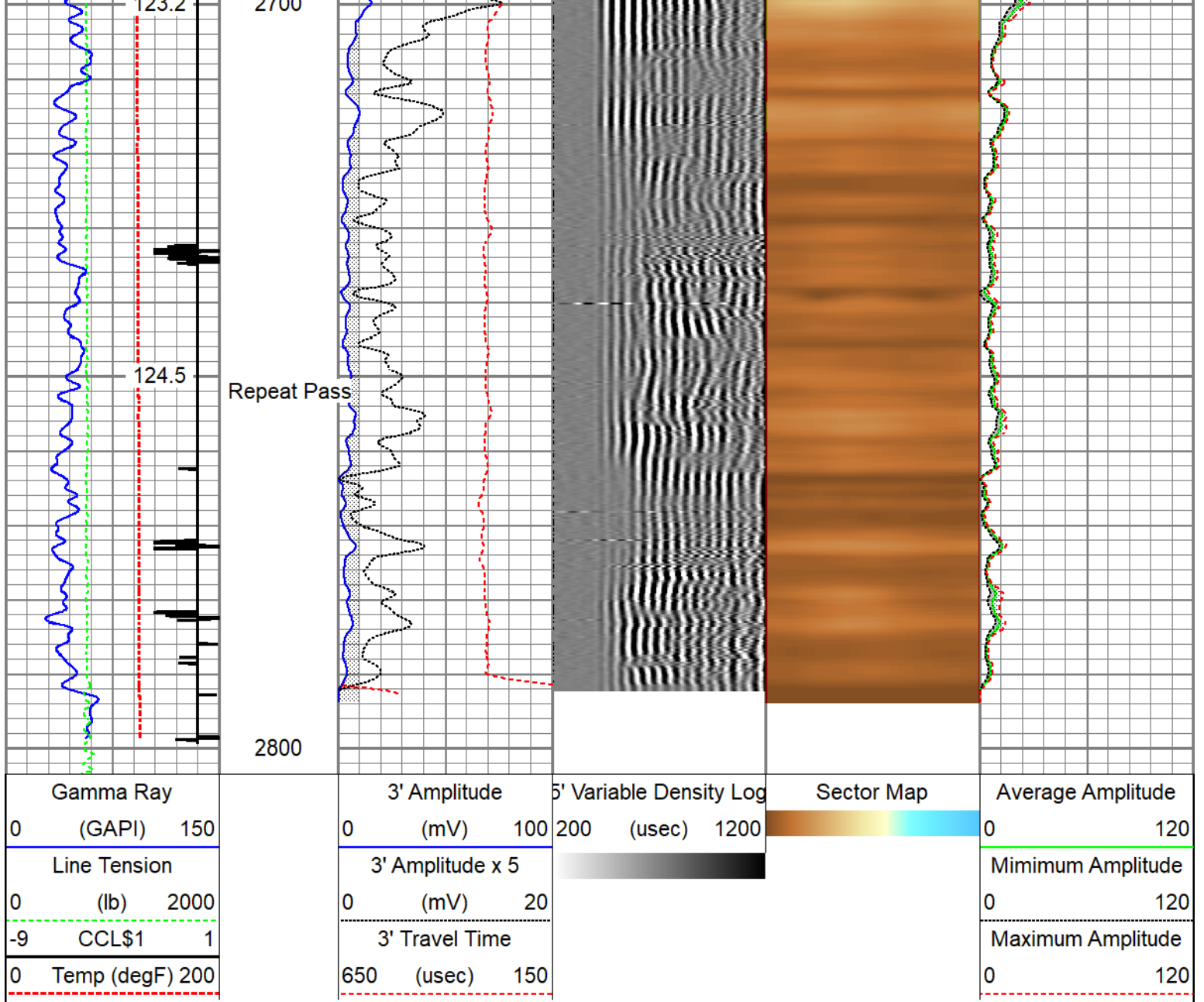
Repeat Pass 5" = 100'

0PSI

Database File fram\_mansur\_33-1-g\_owp\_rcbl.db  
 Dataset Pathname repeat.1  
 Presentation Format twgrcbl  
 Dataset Creation Tue Jun 18 17:15:29 2024  
 Charted by Depth in Feet scaled 1:240

Gamma Ray 0 (GAPI) 150		3' Amplitude 0 (mV) 100	5' Variable Density Log 200 (usec) 1200	Sector Map	Average Amplitude 0 120
Line Tension 0 (lb) 2000		3' Amplitude x 5 0 (mV) 20			Minimum Amplitude 0 120
-9 CCL\$1 1		3' Travel Time 650 (usec) 150			Maximum Amplitude 0 120
0 Temp (degF) 200					





### Calibration Report

Database File fram\_mansur\_33-1-g\_owp\_rcbl.db  
 Dataset Pathname repeat  
 Dataset Creation Tue Jun 18 16:56:01 2024

### Gamma Ray Calibration Report

Serial Number: FW1401-17  
 Tool Model: 50-GCT275-0000  
 Performed: Thu May 2 14:09:05 2024

Calibrator Value: 148.8 GAPI

Background Reading: 74.9 cps  
 Calibrator Reading: 301.0 cps

Sensitivity: 0.4079 GAPI/cps

### Inclinometer Calibration Report

Performed: Fri Oct 20 14:22:50 2023

Low Read. High Read. Low Ref. High Ref.

X Accelerometer	-903.00	892.00	-1.00	1.00	gee
Y Accelerometer	-900.00	901.00	-1.00	1.00	gee
Z Accelerometer	6.33	-897.73	0.00	1.00	gee

**Segmented Cement Bond Log Calibration Report**

Serial Number: 130433  
 Tool Model: Probe275acc  
 Calibration Casing Diameter: 5.500 in  
 Calibration Depth: 94.325 ft

Master Calibration, performed Tue Jun 18 15:44:30 2024:

	Raw (v)		Calibrated (mv)		Results	
	Zero	Cal	Zero	Cal	Gain	Offset
3'	0.006	0.721	0.250	71.921	100.251	-0.399
CAL	0.000	0.766				
5'	0.004	0.655	0.250	71.921	110.102	-0.184
SUM						
S1	0.005	0.758	0.000	100.000	132.690	-0.635
S2	0.005	0.709	0.000	100.000	142.040	-0.699
S3	0.003	0.663	0.000	100.000	151.507	-0.509
S4	0.004	0.632	0.000	100.000	159.179	-0.678
S5	0.004	0.687	0.000	100.000	146.325	-0.532
S6	0.004	0.745	0.000	100.000	134.988	-0.504
S7	0.004	0.768	0.000	100.000	130.869	-0.534
S8	0.005	0.738	0.000	100.000	136.558	-0.740

Internal Reference Calibration, performed (Not Performed):

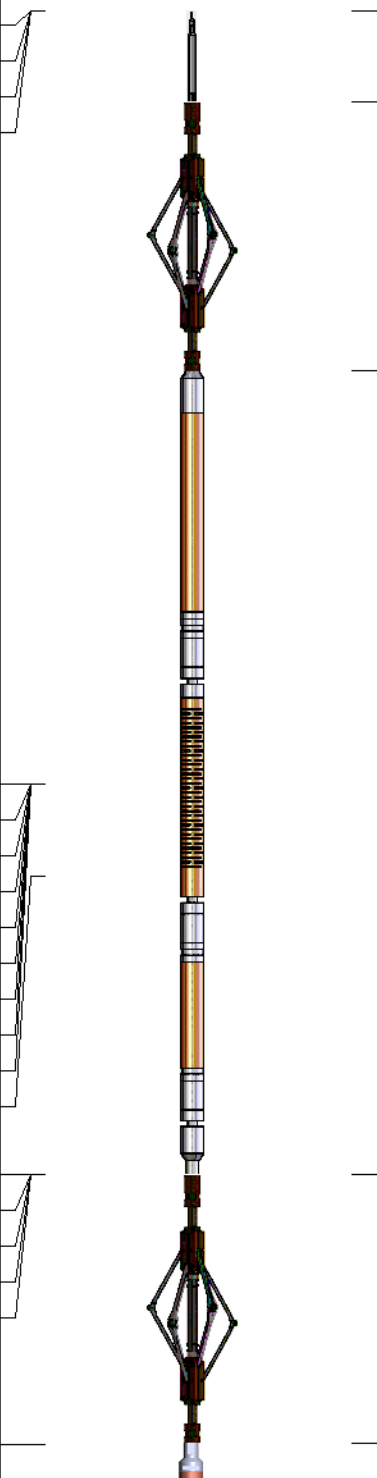
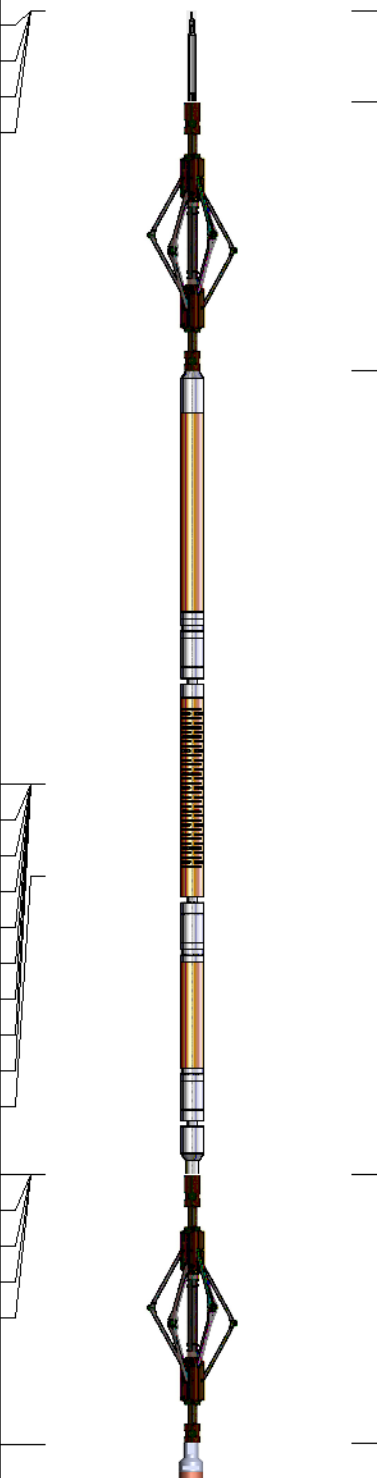
	Raw (v)		Calibrated (v)		Results	
	Zero	Cal	Zero	Cal	Gain	Offset
CAL	0.000	0.000	0.000	0.766	1.000	0.000

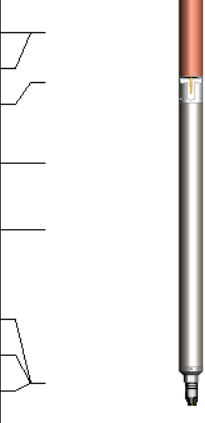
Air Zero Calibration, performed Thu Jun 13 10:34:00 2024:

	Raw (v)		Calibrated (v)		Results	
	Zero		Zero		Gain	Offset
3'	0.000		0.000			0.000
5'	0.000		0.000			0.000
SUM						
S1	0.000		0.000			0.000
S2	0.000		0.000			0.000
S3	0.000		0.000			0.000
S4	0.000		0.000			0.000
S5	0.000		0.000			0.000
S6	0.000		0.000			0.000
S7	0.000		0.000			0.000
S8	0.000		0.000			0.000


### Inclinometer Calibration Report

Performed:	(Not Performed)				
	Low Read.	High Read.	Low Ref.	High Ref.	
X Accelerometer	0.00	1.00	0.00	1.00	gee
Y Accelerometer	0.00	1.00	0.00	1.00	gee
Z Accelerometer	0.00	1.00	0.00	1.00	gee

Sensor	Offset (ft)	Schematic	Description	Length (ft)	O.D. (in)	Weight (lb)	
GCT_FMWR	20.60		Cable-Head-Titan 1 7/16" Cable Head	1.00	1.44	1.00	
mSec_Count	20.60		BTA-MUD BTA 2-3/4" Roller 6 Arm Centralizer with Reversible Ends	2.92	2.72	25.00	
RBT_Status	20.60						
Error_Ct	20.60						
WVFS8	12.19		RBT8acc-Probe275acc (130433) 2.75" Radial Corrosion with accelerometer	8.75	2.75	110.00	
WVFS7	12.19						
WVFS6	12.19						
WVFS5	12.19						
WVFS4	12.19						
WVFS3	12.19						
WVFS2	12.19						
WVFS1	12.19						
WVF3FT	12.19						
WVF5FT	11.19						
RBT_ACCZ	7.94		BTA-MUD BTA 2-3/4" Roller 6 Arm Centralizer with Reversible Ends	2.92	2.72	25.00	
RBT_ACCY	7.94						
RBT_ACCX	7.94						
WVFSYNC	7.94						
WVFCAL	7.94						
GCT_HV	5.01						

CCL\$2	4.06		GCT_acc-50-GCT275-0000 (FW1401-17) Probe 2.75" Gamma Ray - CCL w/Temp (Single Pin)	4.77	2.75	55.00
CCL\$1	4.06					
GCT_Temp	3.51					
GR	2.64					
GCT_IntTemp	1.92					
GCT_ACCZ	0.25					
GCT_ACCY	0.25					
GCT_ACCX	0.25					
			GO BN-14375 GO 1-7/16" Bull Nose with Go Box Top	0.25	1.44	1.00

Dataset: fram\_mansur\_33-1-g\_owp\_rcbl.db: field/well/run1/main  
Total length: 20.60 ft  
Total weight: 217.00 lb  
O.D.: 2.75 in

Company	Fram Operating LLC		
Well	Mansur 33-1-G (OWP)		
Field	Whitewater		
County	Mesa	State	Colorado
		Radial Cement Gamma Ray Casing Collar Log	