

# Site Specific Final Reclamation Completion Notice – Cropland Drone Imagery

## Permit Closure Report – Cropland

**Location ID:** 305914

**Location Name:** Alm #42-33

**Report Date:**

12/13/2024

HWA Wildlife Consulting has reviewed the data provided in this report. This report was developed in accordance with the *ECMC Operator Guidance - operator supplied cropland drone imagery and information for submitting a final reclamation complete notice.*

**Crop Year and Type:**

**Crop Type 2023-**Corn

**Crop Type 2024-**Corn

### Quality Assurance & Quality Control Audit:

<b>Performed by</b>	HWA Wildlife Consulting, LLC
<b>Audit Date</b>	31 July 2024



*Prepared by:*

*HWA Wildlife Consulting, LLC  
2308 South 8<sup>th</sup> Street  
Laramie, WY 82070  
www.hwa-wildlife.com  
(307) 742-5440*

**Location Checklist:**

<b>Operator/#</b>	PDC Energy INC #69175		
<b>Location ID &amp; Name</b>	305914 & ALM-67N65W/33SENE		
<b>County</b>	Weld County, CO		
<b>Well Information</b>	Well Name: Alm #42-33		
	Well API#: 05-123-23665		
	Lat/Long as Drilled: 40.532560/-104.661170		
	Plug Date & Form 6S Doc #: 4/05/2018 & 401629469		
<b>Facility Entities</b>		Tank Battery	Pits
	X	Well	X On-location Flowlines Form 42 Doc #: 403886981
		Domestic Taps	X Off-location Flowlines Form 44 Doc #: 403904464
<b>Equipment On-site</b>	X	None	Debris
		Pit mouse/rat holes, cellars backfilled	
<b>Access Road</b>	X	Regraded	X Contoured
	NA	Culvert removed	X Gravel removed
		Pre-Existing: must provide supporting documentation	
<b>Reclamation Status</b>	X	Location and associated disturbances reclaimed	
		Subsidence	
<b>Spills or Releases (Form 19)</b>	X	No	Yes
<b>Site Investigation and Remediation Workplan (Form 27/27A)</b>	X	No	Yes
<b>On-Location Flowlines</b>		No	X Yes
<b>Off-Location Flowlines</b>		No	X Yes
<b>Inspection Corrective Actions</b>	X	No	Yes
<b>Sundry Notice</b>	No Sundry Notice (Form 4s) related to 900-1200 Series Rules were identified.		
<b>Drone Information</b>	Make and Model		DJI Phantom 4 Pro & WM331S
	Image Processing Software		Drone Deploy
	Pilot Name & FAA Certification #		Emily Schmidt & 5021087
	Date of FAA Certificate Issuance		24 June 2024

**Location Summary:**

<b>Name</b>	ALM-67N65W/33SENE		
<b>Location ID</b>	305914		
<b>Operator/#</b>	PDC ENERGY INC/69175		
<b>Field</b>	Wattenberg/90750		
<b>County, State</b>	Weld, CO		
<b>Lat/Long</b>	40.533753/-104.666529		
	X	Planned location	As Drilled
<b>Facility Status</b>	CL	<b>Location</b>	SENE 33 7N65W
<b>Facility Status Date</b>	4/05/2018		
<b>Facility Entities</b>	X	Tank Battery (Off-Site)	Pits
	X	Wells	X On-Location Flowlines
		Domestic Taps	X Off-Location Flowlines
		Electric Utilities	
<b>Equipment On-site</b>	X	No	Yes
		Pit mouse/rat holes, cellars backfilled	
<b>Access Road</b>	X	Regraded	X Contoured
	NA	Culvert removed	X Gravel Removed
		Pre-existing: must provide supporting documentations	
<b>Environmental Incident and Remediations</b>	X	None	Spill or Release (Form 19)
		Remediation (Form 27/27A)	
<b>Variance Requests</b>	No variances were identified		
<b>Inspection Corrective Actions (CA)s</b>	No corrective action identified		
<b>Sundry Notice (Form 4)</b>	No Sundry Notice (Form 4) related to 900-1200 Series Rules were identified.		
<b>On-Location Flowlines (Form 42)</b>	The on-location flowline was abandoned on 4/02/2018. Abandonment notice is given under Form 42 (401653002)		
<b>Off-Location Flowlines (Form 44)</b>	Abandonment Doc #: 403904464 It is PDC's belief that this flowline was properly abandoned according to the regulations in effect at the time of the abandonment. PDC has diligently searched their records in order to provide all documentation that is available.		
<b>Site Investigation and Remediation Workplan (Form 27/27A)</b>	No Form 27 was identified		
<b>Spill or Release (Form 19)</b>	No Form 19 was identified		
<b>Field Inspection Form (Form INSP)</b>	There are no field inspection forms with unresolved corrective actions.		
<b>COGIS Tank Facilities</b>	No tank battery scout card or documents were detected.		

<b>Information (Scout Card)</b>	Tank battery serviced the Alm #32-33 and the Alm #42-33 well.
<b>COGIS Well Information (Scout Card)</b>	Well Name: ALM #42-33 Facility ID: 283677 Status and Date: PA & 4/05/2018 Lat/Long as Drilled: 40.532560/-104.661170

**Site Description:**

**Audit Key Findings – Designation Land Use Observations**

<b>PREVIOUS LAND USE</b>	<b>CURRENT LAND USE</b>
<b>Reference imagery for infrastructure: NAIP 2009</b>	<b>Remote sensed Imagery: 07/31/2024</b>
<b>Designation: Oil and Gas Facility</b>	<b>Designation: Cropland</b>

**The following imagery sources were reviewed during this Investigation:**

NAIP Imagery 2005, 2006, 2009, 2011, 2013, 2017, 2019, and 2023.

**Closure Information:**

The Alm #42-33 well (API # 05-123-23665) is located in Weld County, Colorado near the intersection of County Road 43 and County Road 74. The well was plugged and abandoned on April 5<sup>th</sup>, 2018. The associated on-location flowline was abandoned on April 2<sup>nd</sup>, 2018. The associated off-location flowline was abandoned on April 3<sup>rd</sup>, 2018.

The tank battery will not be passed with this report. The associated tank battery also serviced the Alm #32-33 well. The tank battery will be tied to the Alm #32-33 well (location ID 305295, see Figure 1), allowing the Alm #42-33 well to pass. There were no documented spills or releases, remediation projects, or inspection corrective actions in COGIS related to the Alm #42-33 well.

Drone imagery confirms that no equipment remains after reclamation activities. The imagery also shows no disturbances or stunted crop growth resulting from the well, flowlines, or access road.

**Drone information:**

<b>Make</b>	DJI Phantom Pro
<b>Model</b>	WM331S
<b>Image Processing Software</b>	Drone Deploy
<b>Pilot Name</b>	Emily Schmidt
<b>Pilot Certification Number</b>	5021087
<b>Date of FAA Certification Issuance</b>	24 June 2024

Location Overview:



Figure 1. Overview of the reclaimed well site surveyed during 2024.

**Pre-Plugging Active Operation Location Overview:**



Figure 2. Pre-plugging overview of the reclaimed well site and the associated access road, tank battery, and flowline.

### Post-Plugging and Abandonment Location Overview:

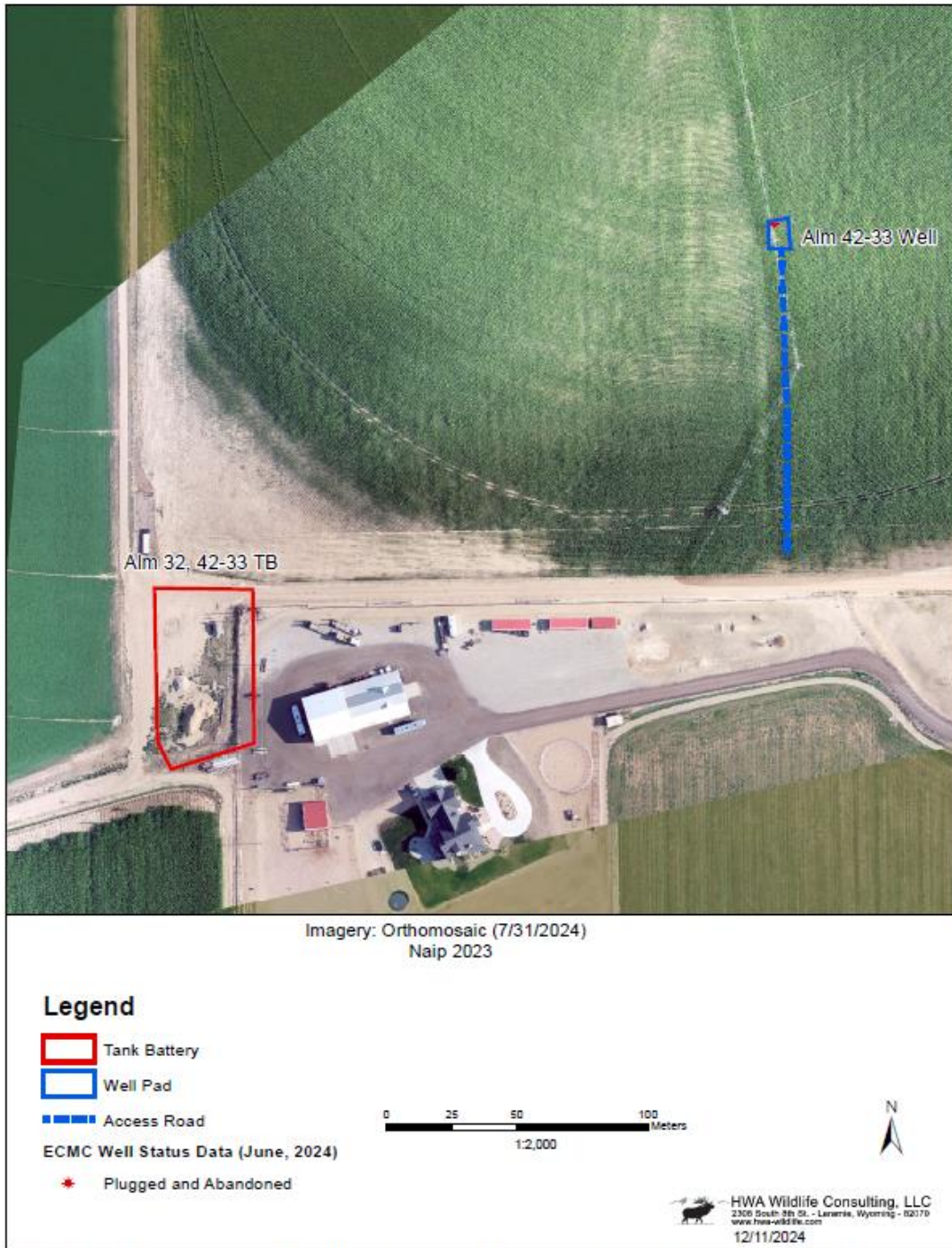
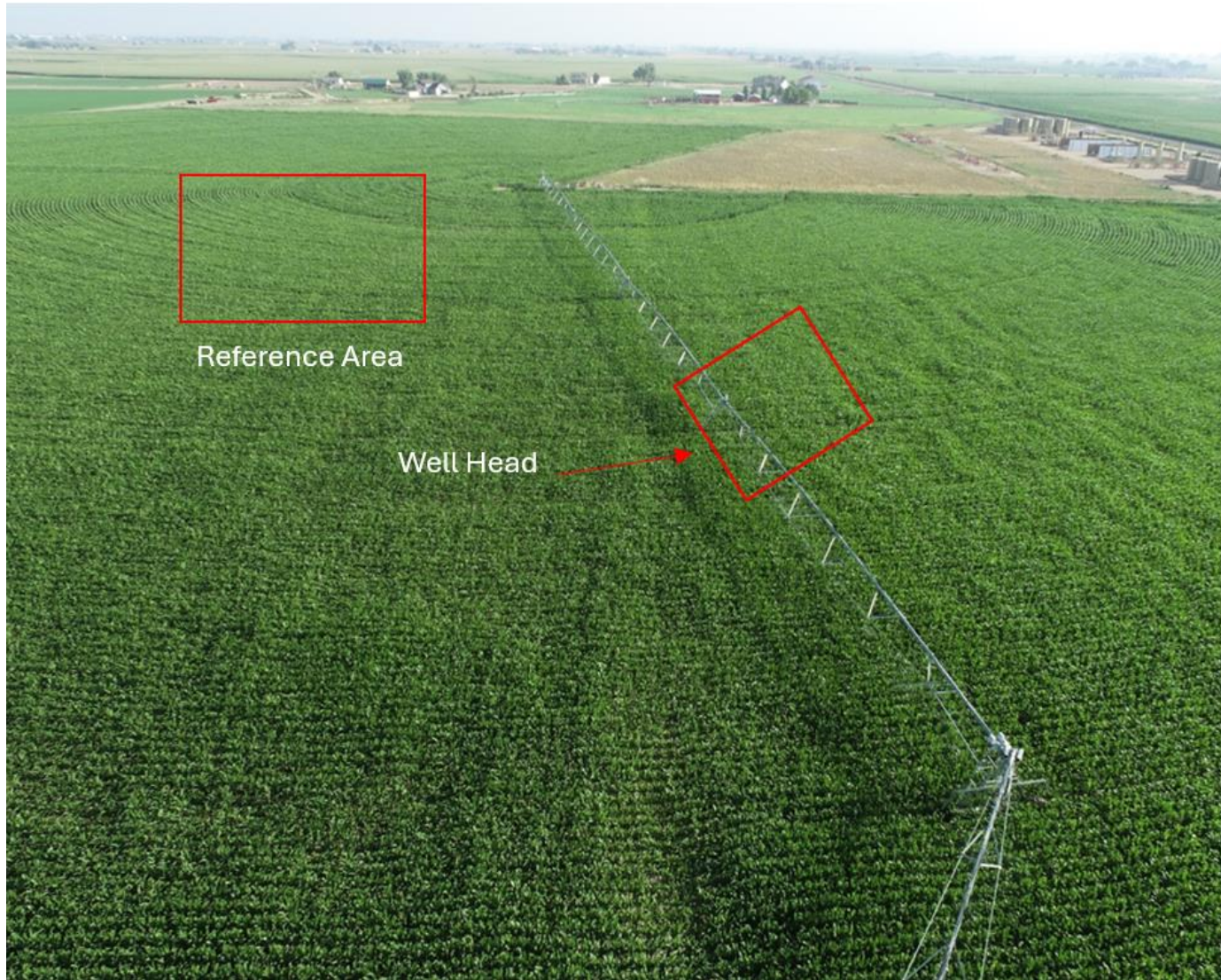


Figure 3. Post-plugging overview of the reclaimed well site and the associated access road, tank battery, and flowline.

**Cardinal Directional Drone Photos and Reference Area Photos (7/31/2024):**



*Figure 4: Looking North towards well and reference area, 200 feet in height, Lat/Long: 40.531736/-104.661206.*



*Figure 5: Looking South towards well, 100 feet in height, Lat/Long: 40.532995/-104.661179.*



Figure 6: Looking East towards well, 100 feet in height, Lat/Long: 40.532415/-104.662095.



Figure 7: Looking West towards well, 200 feet in height, Lat/Long: 40.532589/-104.659815.

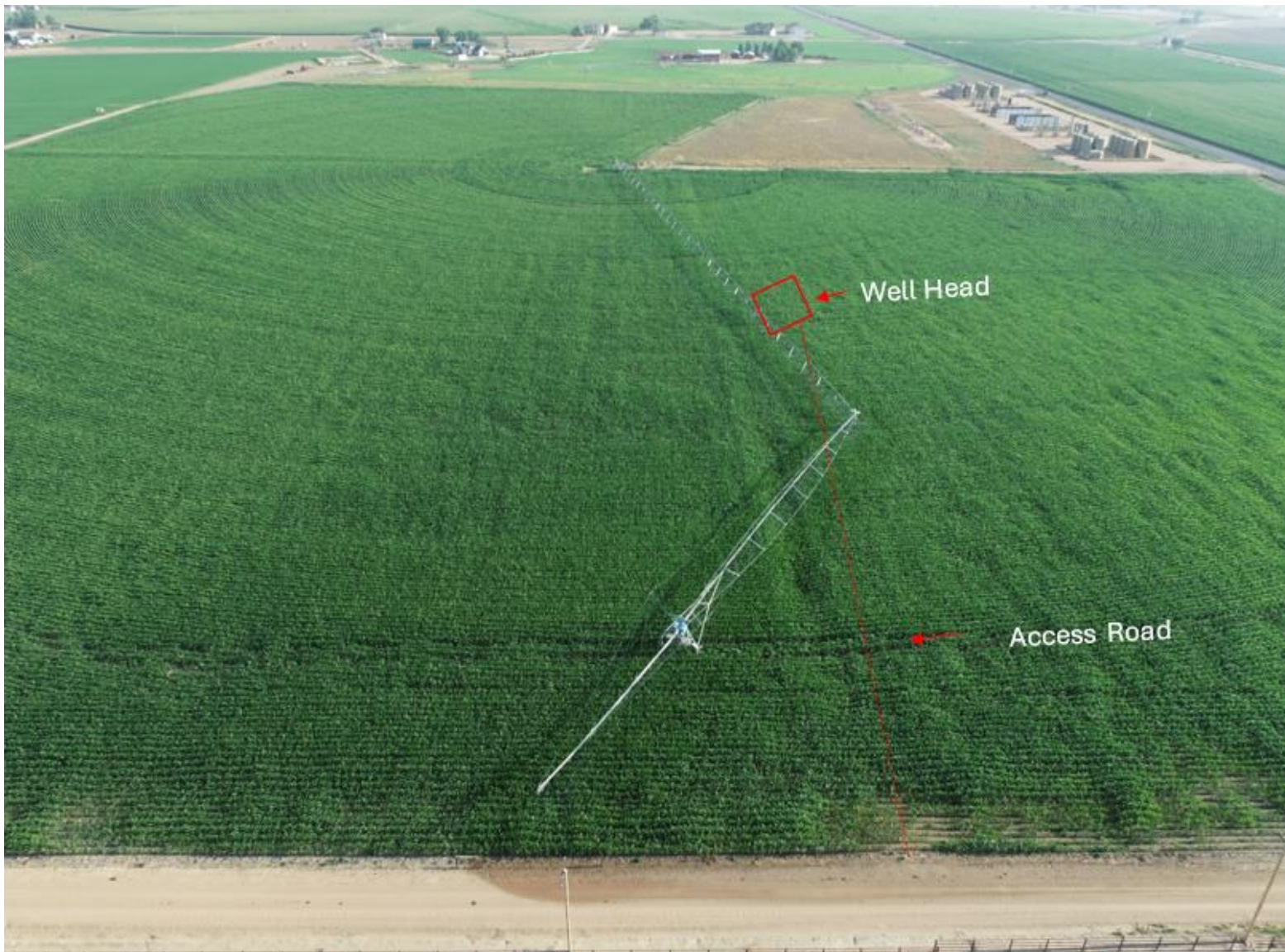


Figure 8: Looking North at access road, 200 feet in height, Lat/Long: 40.530846/-104.661421.



Figure 9: Looking West towards the Flowline, 200 feet in height, Lat/Long: 40.532589/-104.659815.

**Ground Photos (7/31/2024):**



*Figure 10: Looking North at the Access Road take off.*



*Figure 11: Cropland Reference Photo showing corn in the appropriate reproductive growth stage.*