

Well Name & API: Albrighton D-10HN, 05-123-42500

Flowline Abandonment Type:

On-location flowline. Abandon in Place due to common trench with active flowlines.

Flowlines

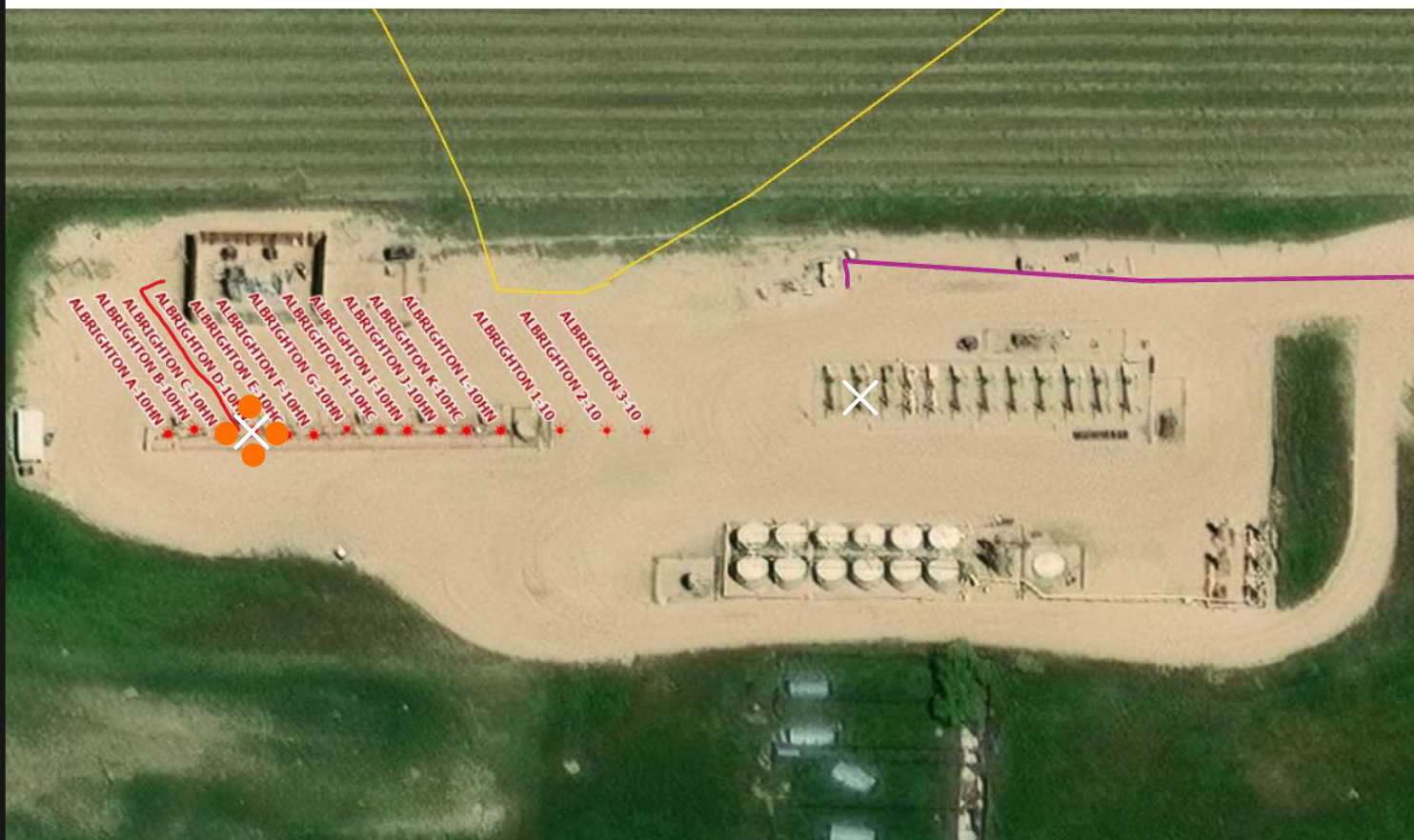
- Abandoned
- Active
- Out of Service
- Pre-commissioned
- Removed
- Turned into Air Line
- Area of Conflict (Proposed Abandon-in-Place Area)
- Proposed Soil Sample Location
- Field Screening Location

Wells

- Active
- Abandoned Location
- Dry & Abandoned
- Plugged & Abandoned
- Producing
- Shut-In
- Temporarily Abandoned

Third-Party Pipelines

- NWI Wetlands



Well Latitude/Longitude: 40.496612/-104.541691

Flowline Length (ft): N/A

Flowline Point A Latitude/Longitude: N/A

Flowline Point B Latitude/Longitude: N/A

Created By: Clara Jenck
Date: 12/12/2024

