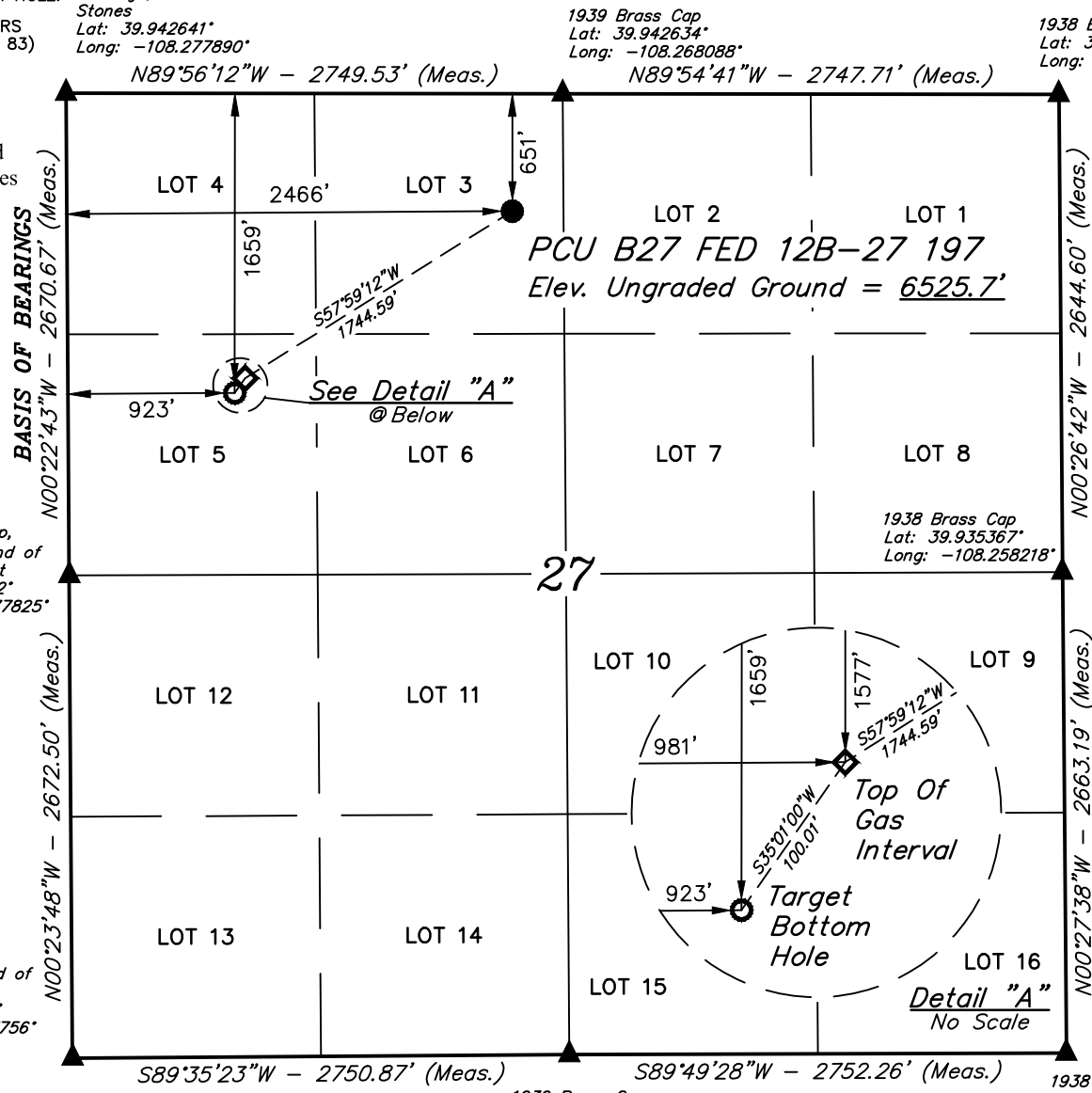


**LEGEND:**

- = PROPOSED WELLHEAD.
- ◆ = TOP OF GAS INTERVAL. 1939 Brass Cap, 1.0' High, Mound of Stones
- = TARGET BOTTOM HOLE. 1939 Brass Cap, 1.6' High, Mound of Stones, T-Post
- ▲ = SECTION CORNERS LOCATED. (NAD 83)

# T1S, R97W, 6th P.M.

**NOTE:**  
Distances referenced on plat to section lines are perpendicular.



PDOP = 1.9

<b>NAD 83 (SURFACE LOCATION)</b>
LATITUDE = 39°56'27.06" (39.940850°)
LONGITUDE = -108°16'08.69" (-108.269081°)
<b>NAD 27 (SURFACE LOCATION)</b>
LATITUDE = 39°56'27.16" (39.940878°)
LONGITUDE = -108°16'06.38" (-108.268439°)
<b>UTM, NAD 27 (ZONE 12)</b>
N: 14516238.97' E: 2406123.80'



<b>NAD 83 (TOP OF GAS INTERVAL)</b>	<b>NAD 83 (BOTTOM HOLE LOCATION)</b>
LATITUDE = 39°56'17.92" (39.938311°)	LATITUDE = 39°56'17.11" (39.938086°)
LONGITUDE = -108°16'27.68" (-108.274354°)	LONGITUDE = -108°16'28.41" (-108.274559°)
<b>NAD 27 (TOP OF GAS INTERVAL)</b>	<b>NAD 27 (BOTTOM HOLE LOCATION)</b>
LATITUDE = 39°56'18.02" (39.938339°)	LATITUDE = 39°56'17.21" (39.938114°)
LONGITUDE = -108°16'25.36" (-108.273712°)	LONGITUDE = -108°16'26.10" (-108.273916°)
<b>UTM, NAD 27 (ZONE 12)</b>	<b>UTM, NAD 27 (ZONE 12)</b>
N: 14515269.03' E: 2404673.84'	N: 14515185.40' E: 2404619.00'

1939 Brass Cap  
Lat: 39.928034°  
Long: -108.267951°

1938 Brass Cap  
Lat: 39.928059°  
Long: -108.258141°

**CERTIFICATE**

THIS IS TO CERTIFY THAT THE ABOVE PLAT WAS PREPARED AND THE LOCATION AS SHOWN WAS STAKED ON THE GROUND FROM FIELD NOTES OF ACTUAL SURVEYS MADE BY ME OR UNDER MY SUPERVISION AND THAT THE SAME ARE TRUE AND CORRECT TO THE BEST OF MY KNOWLEDGE AND BELIEF.



REV: 2 10-15-24 M.D. (SHL, TGI AND BHL CHANGE)

**BASIS OF BEARINGS**

BEARINGS ARE A BASED ASSUMPTION THAT THE WEST LINE OF THE NORTHWEST 1/4 OF SECTION 27 BEARS N00°22'43"W. MONUMENT'S DESCRIBED HEREON.

**BASIS OF ELEVATION**

BENCH MARK (MR 25) LOCATED IN THE NE 1/4 OF SECTION 25, T2S, R99W, 6th P.M., TAKEN FROM THE YANKEE GULCH QUADRANGLE, COLORADO, RIO BLANCO, 7.5 MINUTE SERIES (TOPOGRAPHIC MAP) PUBLISHED BY THE UNITED STATES DEPARTMENT OF THE INTERIOR, GEOLOGICAL SURVEY. SAID ELEVATION IS MARKED AS BEING 6971 FEET.

**UELS, LLC**  
Corporate Office \* 85 South 200 East  
Vernal, UT 84078 \* (435) 789-1017



**Caerus Piceance LLC**

**PCU B27 FED 12B-27 197**  
**LOT 3, SECTION 27, T1S, R97W, 6th P.M.**  
**RIO BLANCO COUNTY, COLORADO**

<b>SURVEYED BY</b>	BART HUNTING, J.L.	09-12-22	<b>SCALE</b>
<b>DRAWN BY</b>	T.L.L.	11-08-22	1" = 1000'

**WELL LOCATION PLAT**