

Project: Rio Blanco County, CO  
 Site: PCU B27 197 Pad  
 Well: RNPU B27 FED 25B-22 197  
 Wellbore: OH  
 Design: Prelim #2  
 Latitude: 39.941207  
 Longitude: -108.268599  
 Ground Level: 6510.0  
 RKB @ 6540.0usft (30')

FORMATION TOP DETAILS			
TVDPATH	MDPATH	FORMATION	
2479.0	2583.3	Orange Marker	
2626.0	2738.7	Wasatch	
5584.0	5864.8	Wasatch G	
6067.0	6375.3	Fort Union	
7583.0	7953.7	Ohio Creek	
8333.0	8703.8	Williams Fork	
11306.0	11679.2	Cameo	
11859.0	12229.3	Rollins	
11930.0	12301.3	Cozzette	
12530.0	12901.4	Corcoran	

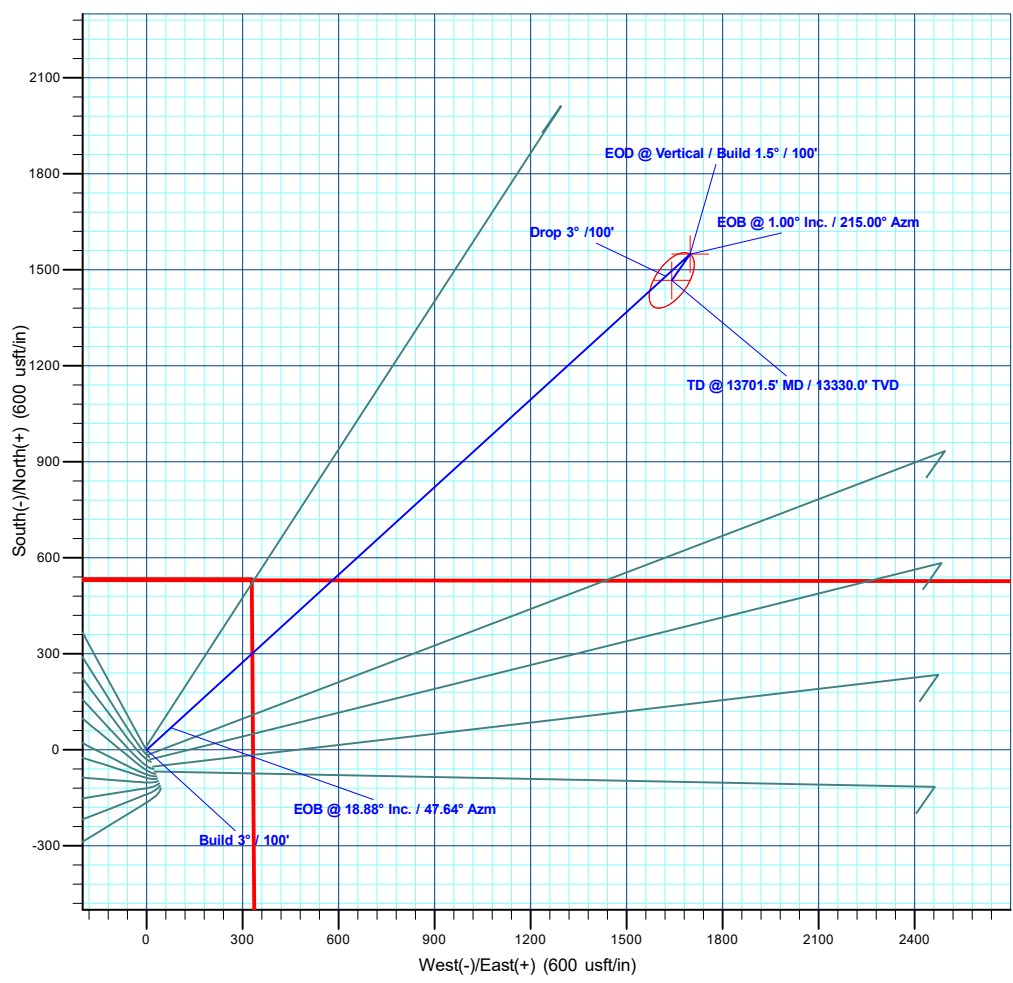
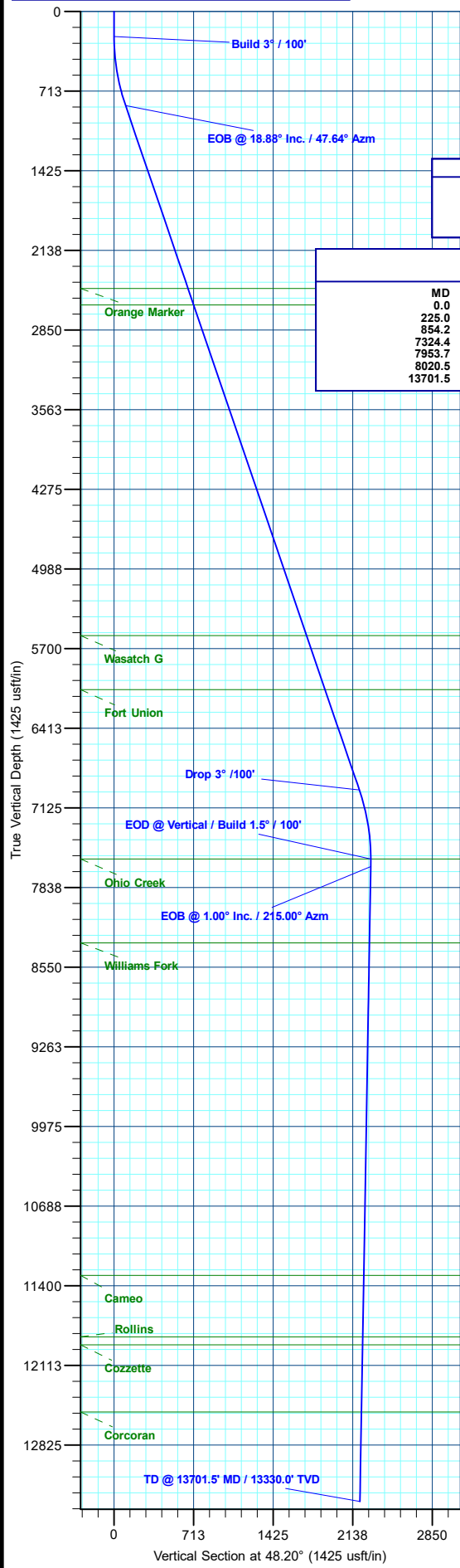
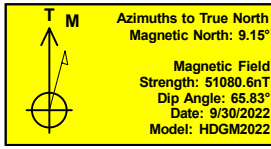
REFERENCE INFORMATION	
Co-ordinate (N/E) Reference:	Well RNPU B27 FED 25B-22 197 - Slot 25B-22, True North
Vertical (TVD) Reference:	RKB @ 6540.0usft (30')
Section (VS) Reference:	Slot - 25B-22(0.0N, 0.0E)
Measured Depth Reference:	RKB @ 6540.0usft (30')
Calculation Method:	Minimum Curvature

WELL DETAILS: RNPU B27 FED 25B-22 197					
+N/-S	+E/-W	Northing	Easting	Latitude	Longitude
0.0	0.0	14516357.50	2406075.40	39.941207	-108.268599
				6510.0	25B-22

PROJECT DETAILS: Rio Blanco County, CO  
 Geodetic System: Universal Transverse Mercator (US Survey Feet)  
 Datum: NAD 1927 - Western US  
 Ellipsoid: Clarke 1866  
 Zone: Zone 12N (114 W to 108 W)  
 System Datum: Mean Sea Level

DESIGN TARGET DETAILS							
Name	TVD	+N/-S	+E/-W	Northing	Easting	Latitude	Longitude
25B-22 - OHCR	7583.0	1549.1	1698.6	14517957.83	2407725.73	39.945458	-108.262543
25B-22 - PBHL	13330.0	1467.1	1641.2	14517874.20	2407670.90	39.945233	-108.262747

SECTION DETAILS										
MD	Inc	Azi	TVD	+N/-S	+E/-W	Dleg	TFace	VSec	Annotation	
0.0	0.00	0.00	0.0	0.0	0.0	0.00	0.00	0.0	Build 3° / 100'	
225.0	0.00	0.00	225.0	0.0	0.0	0.00	0.00	0.0	EOB @ 18.88° Inc. / 47.64° Azm	
854.2	18.88	47.64	842.9	69.2	75.9	3.00	47.64	102.7	Drop 3° / 100'	
7324.4	18.88	47.64	6965.1	1479.8	1622.7	0.00	0.00	2196.0	EOD @ Vertical / Build 1.5° / 100'	
7953.7	0.00	0.00	7583.0	1549.1	1698.6	3.00	180.00	2298.7	EOB @ 1.00° Inc. / 215.00° Azm	
8020.5	1.00	215.00	7649.8	1548.6	1698.2	1.50	215.00	2298.2	TD @ 13701.5' MD / 13330.0' TVD	
13701.5	1.00	215.00	13330.0	1467.1	1641.2	0.00	0.00	2201.4		



Plan: Prelim #2 (RNPU B27 FED 25B-22 197/OH)  
 Created By: Will Jircik Date: 19:35, October 03 2024



## **QB Energy Operating, LLC**

**Rio Blanco County, CO**

**PCU B27 197 Pad**

**RNPU B27 FED 25B-22 197 - Slot 25B-22**

**OH**

**Plan: Prelim #2**

## **KLX Well Planning Report**

**03 October, 2024**



<b>Database:</b>	KLXDirectional-AD	<b>Local Co-ordinate Reference:</b>	Well RNPU B27 FED 25B-22 197 - Slot 25B-22
<b>Company:</b>	QB Energy Operating, LLC	<b>TVD Reference:</b>	RKB @ 6540.0usft (30')
<b>Project:</b>	Rio Blanco County, CO	<b>MD Reference:</b>	RKB @ 6540.0usft (30')
<b>Site:</b>	PCU B27 197 Pad	<b>North Reference:</b>	True
<b>Well:</b>	RNPU B27 FED 25B-22 197	<b>Survey Calculation Method:</b>	Minimum Curvature
<b>Wellbore:</b>	OH		
<b>Design:</b>	Prelim #2		

<b>Project</b>	Rio Blanco County, CO		
<b>Map System:</b>	Universal Transverse Mercator (US Survey Fee	<b>System Datum:</b>	Mean Sea Level
<b>Geo Datum:</b>	NAD 1927 - Western US		
<b>Map Zone:</b>	Zone 12N (114 W to 108 W)		

<b>Site</b>	PCU B27 197 Pad				
<b>Site Position:</b>		<b>Northing:</b>	14,516,246.39 usft	<b>Latitude:</b>	39.940899
<b>From:</b>	Map	<b>Easting:</b>	2,406,120.81 usft	<b>Longitude:</b>	-108.268449
<b>Position Uncertainty:</b>	0.0 usft	<b>Slot Radius:</b>	13-3/16 "	<b>Grid Convergence:</b>	1.75 °

<b>Well</b>	RNPU B27 FED 25B-22 197 - Slot 25B-22					
<b>Well Position</b>	<b>+N/-S</b>	112.5 usft	<b>Northing:</b>	14,516,357.50 usft	<b>Latitude:</b>	39.941207
	<b>+E/-W</b>	-42.0 usft	<b>Easting:</b>	2,406,075.40 usft	<b>Longitude:</b>	-108.268599
<b>Position Uncertainty</b>		0.0 usft	<b>Wellhead Elevation:</b>		<b>Ground Level:</b>	6,510.0 usft

<b>Wellbore</b>	OH				
<b>Magnetics</b>	<b>Model Name</b>	<b>Sample Date</b>	<b>Declination (°)</b>	<b>Dip Angle (°)</b>	<b>Field Strength (nT)</b>
	HDGM2022	9/30/2022	9.15	65.83	51,080.60000000

<b>Design</b>	Prelim #2			
<b>Audit Notes:</b>				
<b>Version:</b>	<b>Phase:</b>	PLAN	<b>Tie On Depth:</b>	0.0
<b>Vertical Section:</b>	<b>Depth From (TVD) (usft)</b>	<b>+N/-S (usft)</b>	<b>+E/-W (usft)</b>	<b>Direction (°)</b>
	0.0	0.0	0.0	48.20

<b>Plan Sections</b>											
Measured Depth (usft)	Inclination (°)	Azimuth (°)	Vertical Depth (usft)	+N/-S (usft)	+E/-W (usft)	Dogleg Rate (°/100usft)	Build Rate (°/100usft)	Turn Rate (°/100usft)	TFO (°)	Target	
0.0	0.00	0.00	0.0	0.0	0.0	0.00	0.00	0.00	0.00		
225.0	0.00	0.00	225.0	0.0	0.0	0.00	0.00	0.00	0.00		
854.2	18.88	47.64	842.9	69.2	75.9	3.00	3.00	0.00	47.64		
7,324.4	18.88	47.64	6,965.1	1,479.8	1,622.7	0.00	0.00	0.00	0.00		
7,953.7	0.00	0.00	7,583.0	1,549.1	1,698.6	3.00	-3.00	0.00	180.00	25B-22 - OHCR	
8,020.5	1.00	215.00	7,649.8	1,548.6	1,698.2	1.50	1.50	-216.91	215.00		
13,701.5	1.00	215.00	13,330.0	1,467.1	1,641.2	0.00	0.00	0.00	0.00	25B-22 - PBHL	

<b>Database:</b>	KLXDirectional-AD	<b>Local Co-ordinate Reference:</b>	Well RNPU B27 FED 25B-22 197 - Slot 25B-22
<b>Company:</b>	QB Energy Operating, LLC	<b>TVD Reference:</b>	RKB @ 6540.0usft (30')
<b>Project:</b>	Rio Blanco County, CO	<b>MD Reference:</b>	RKB @ 6540.0usft (30')
<b>Site:</b>	PCU B27 197 Pad	<b>North Reference:</b>	True
<b>Well:</b>	RNPU B27 FED 25B-22 197	<b>Survey Calculation Method:</b>	Minimum Curvature
<b>Wellbore:</b>	OH		
<b>Design:</b>	Prelim #2		

**Planned Survey**

Measured Depth (usft)	Inclination (°)	Azimuth (°)	Vertical Depth (usft)	+N/-S (usft)	+E/-W (usft)	Vertical Section (usft)	Dogleg Rate (°/100usft)	Build Rate (°/100usft)	Turn Rate (°/100usft)
0.0	0.00	0.00	0.0	0.0	0.0	0.0	0.00	0.00	0.00
100.0	0.00	0.00	100.0	0.0	0.0	0.0	0.00	0.00	0.00
200.0	0.00	0.00	200.0	0.0	0.0	0.0	0.00	0.00	0.00
<b>Build 3° / 100'</b>									
225.0	0.00	0.00	225.0	0.0	0.0	0.0	0.00	0.00	0.00
300.0	2.25	47.64	300.0	1.0	1.1	1.5	3.00	3.00	0.00
400.0	5.25	47.64	399.8	5.4	5.9	8.0	3.00	3.00	0.00
500.0	8.25	47.64	499.1	13.3	14.6	19.8	3.00	3.00	0.00
600.0	11.25	47.64	597.6	24.7	27.1	36.7	3.00	3.00	0.00
700.0	14.25	47.64	695.1	39.6	43.4	58.8	3.00	3.00	0.00
800.0	17.25	47.64	791.4	57.9	63.5	85.9	3.00	3.00	0.00
<b>EOB @ 18.88° Inc. / 47.64° Azm</b>									
854.2	18.88	47.64	842.9	69.2	75.9	102.7	3.00	3.00	0.00
900.0	18.88	47.64	886.2	79.2	86.8	117.5	0.00	0.00	0.00
1,000.0	18.88	47.64	980.8	101.0	110.7	149.9	0.00	0.00	0.00
1,100.0	18.88	47.64	1,075.5	122.8	134.7	182.2	0.00	0.00	0.00
1,200.0	18.88	47.64	1,170.1	144.6	158.6	214.6	0.00	0.00	0.00
1,300.0	18.88	47.64	1,264.7	166.4	182.5	246.9	0.00	0.00	0.00
1,400.0	18.88	47.64	1,359.3	188.2	206.4	279.3	0.00	0.00	0.00
1,500.0	18.88	47.64	1,453.9	210.0	230.3	311.6	0.00	0.00	0.00
1,600.0	18.88	47.64	1,548.6	231.8	254.2	344.0	0.00	0.00	0.00
1,700.0	18.88	47.64	1,643.2	253.6	278.1	376.3	0.00	0.00	0.00
1,800.0	18.88	47.64	1,737.8	275.4	302.0	408.7	0.00	0.00	0.00
1,900.0	18.88	47.64	1,832.4	297.2	325.9	441.1	0.00	0.00	0.00
2,000.0	18.88	47.64	1,927.1	319.0	349.8	473.4	0.00	0.00	0.00
2,100.0	18.88	47.64	2,021.7	340.8	373.7	505.8	0.00	0.00	0.00
2,200.0	18.88	47.64	2,116.3	362.6	397.6	538.1	0.00	0.00	0.00
2,300.0	18.88	47.64	2,210.9	384.4	421.5	570.5	0.00	0.00	0.00
2,400.0	18.88	47.64	2,305.5	406.2	445.4	602.8	0.00	0.00	0.00
2,500.0	18.88	47.64	2,400.2	428.0	469.3	635.2	0.00	0.00	0.00
<b>Orange Marker</b>									
2,583.3	18.88	47.64	2,479.0	446.2	489.3	662.1	0.00	0.00	0.00
2,600.0	18.88	47.64	2,494.8	449.8	493.2	667.5	0.00	0.00	0.00
2,700.0	18.88	47.64	2,589.4	471.6	517.1	699.9	0.00	0.00	0.00
<b>Wasatch</b>									
2,738.7	18.88	47.64	2,626.0	480.1	526.4	712.4	0.00	0.00	0.00
2,800.0	18.88	47.64	2,684.0	493.4	541.1	732.2	0.00	0.00	0.00
2,900.0	18.88	47.64	2,778.6	515.2	565.0	764.6	0.00	0.00	0.00
3,000.0	18.88	47.64	2,873.3	537.0	588.9	796.9	0.00	0.00	0.00
3,100.0	18.88	47.64	2,967.9	558.8	612.8	829.3	0.00	0.00	0.00
3,200.0	18.88	47.64	3,062.5	580.6	636.7	861.6	0.00	0.00	0.00
3,300.0	18.88	47.64	3,157.1	602.4	660.6	894.0	0.00	0.00	0.00
3,400.0	18.88	47.64	3,251.7	624.2	684.5	926.3	0.00	0.00	0.00
3,500.0	18.88	47.64	3,346.4	646.0	708.4	958.7	0.00	0.00	0.00
3,600.0	18.88	47.64	3,441.0	667.8	732.3	991.0	0.00	0.00	0.00
3,700.0	18.88	47.64	3,535.6	689.6	756.2	1,023.4	0.00	0.00	0.00
3,800.0	18.88	47.64	3,630.2	711.4	780.1	1,055.8	0.00	0.00	0.00
3,900.0	18.88	47.64	3,724.9	733.2	804.0	1,088.1	0.00	0.00	0.00
4,000.0	18.88	47.64	3,819.5	755.1	827.9	1,120.5	0.00	0.00	0.00
4,100.0	18.88	47.64	3,914.1	776.9	851.8	1,152.8	0.00	0.00	0.00
4,200.0	18.88	47.64	4,008.7	798.7	875.7	1,185.2	0.00	0.00	0.00
4,300.0	18.88	47.64	4,103.3	820.5	899.6	1,217.5	0.00	0.00	0.00
4,400.0	18.88	47.64	4,198.0	842.3	923.5	1,249.9	0.00	0.00	0.00

<b>Database:</b>	KLXDirectional-AD	<b>Local Co-ordinate Reference:</b>	Well RNPU B27 FED 25B-22 197 - Slot 25B-22
<b>Company:</b>	QB Energy Operating, LLC	<b>TVD Reference:</b>	RKB @ 6540.0usft (30')
<b>Project:</b>	Rio Blanco County, CO	<b>MD Reference:</b>	RKB @ 6540.0usft (30')
<b>Site:</b>	PCU B27 197 Pad	<b>North Reference:</b>	True
<b>Well:</b>	RNPU B27 FED 25B-22 197	<b>Survey Calculation Method:</b>	Minimum Curvature
<b>Wellbore:</b>	OH		
<b>Design:</b>	Prelim #2		

**Planned Survey**

Measured Depth (usft)	Inclination (°)	Azimuth (°)	Vertical Depth (usft)	+N/-S (usft)	+E/-W (usft)	Vertical Section (usft)	Dogleg Rate (°/100usft)	Build Rate (°/100usft)	Turn Rate (°/100usft)
4,500.0	18.88	47.64	4,292.6	864.1	947.5	1,282.2	0.00	0.00	0.00
4,600.0	18.88	47.64	4,387.2	885.9	971.4	1,314.6	0.00	0.00	0.00
4,700.0	18.88	47.64	4,481.8	907.7	995.3	1,346.9	0.00	0.00	0.00
4,800.0	18.88	47.64	4,576.4	929.5	1,019.2	1,379.3	0.00	0.00	0.00
4,900.0	18.88	47.64	4,671.1	951.3	1,043.1	1,411.6	0.00	0.00	0.00
5,000.0	18.88	47.64	4,765.7	973.1	1,067.0	1,444.0	0.00	0.00	0.00
5,100.0	18.88	47.64	4,860.3	994.9	1,090.9	1,476.3	0.00	0.00	0.00
5,200.0	18.88	47.64	4,954.9	1,016.7	1,114.8	1,508.7	0.00	0.00	0.00
5,300.0	18.88	47.64	5,049.6	1,038.5	1,138.7	1,541.0	0.00	0.00	0.00
5,400.0	18.88	47.64	5,144.2	1,060.3	1,162.6	1,573.4	0.00	0.00	0.00
5,500.0	18.88	47.64	5,238.8	1,082.1	1,186.5	1,605.8	0.00	0.00	0.00
5,600.0	18.88	47.64	5,333.4	1,103.9	1,210.4	1,638.1	0.00	0.00	0.00
5,700.0	18.88	47.64	5,428.0	1,125.7	1,234.3	1,670.5	0.00	0.00	0.00
5,800.0	18.88	47.64	5,522.7	1,147.5	1,258.2	1,702.8	0.00	0.00	0.00
<b>Wasatch G</b>									
5,864.8	18.88	47.64	5,584.0	1,161.6	1,273.7	1,723.8	0.00	0.00	0.00
5,900.0	18.88	47.64	5,617.3	1,169.3	1,282.1	1,735.2	0.00	0.00	0.00
6,000.0	18.88	47.64	5,711.9	1,191.1	1,306.0	1,767.5	0.00	0.00	0.00
6,100.0	18.88	47.64	5,806.5	1,212.9	1,329.9	1,799.9	0.00	0.00	0.00
6,200.0	18.88	47.64	5,901.1	1,234.7	1,353.9	1,832.2	0.00	0.00	0.00
6,300.0	18.88	47.64	5,995.8	1,256.5	1,377.8	1,864.6	0.00	0.00	0.00
<b>Fort Union</b>									
6,375.3	18.88	47.64	6,067.0	1,272.9	1,395.8	1,888.9	0.00	0.00	0.00
6,400.0	18.88	47.64	6,090.4	1,278.3	1,401.7	1,896.9	0.00	0.00	0.00
6,500.0	18.88	47.64	6,185.0	1,300.1	1,425.6	1,929.3	0.00	0.00	0.00
6,600.0	18.88	47.64	6,279.6	1,321.9	1,449.5	1,961.6	0.00	0.00	0.00
6,700.0	18.88	47.64	6,374.3	1,343.7	1,473.4	1,994.0	0.00	0.00	0.00
6,800.0	18.88	47.64	6,468.9	1,365.5	1,497.3	2,026.3	0.00	0.00	0.00
6,900.0	18.88	47.64	6,563.5	1,387.3	1,521.2	2,058.7	0.00	0.00	0.00
7,000.0	18.88	47.64	6,658.1	1,409.1	1,545.1	2,091.0	0.00	0.00	0.00
7,100.0	18.88	47.64	6,752.7	1,430.9	1,569.0	2,123.4	0.00	0.00	0.00
7,200.0	18.88	47.64	6,847.4	1,452.7	1,592.9	2,155.8	0.00	0.00	0.00
7,300.0	18.88	47.64	6,942.0	1,474.5	1,616.8	2,188.1	0.00	0.00	0.00
<b>Drop 3° /100'</b>									
7,324.4	18.88	47.64	6,965.1	1,479.8	1,622.7	2,196.0	0.00	0.00	0.00
7,400.0	16.61	47.64	7,037.1	1,495.4	1,639.7	2,219.0	3.00	-3.00	0.00
7,500.0	13.61	47.64	7,133.6	1,512.9	1,658.9	2,245.1	3.00	-3.00	0.00
7,600.0	10.61	47.64	7,231.4	1,527.1	1,674.4	2,266.1	3.00	-3.00	0.00
7,700.0	7.61	47.64	7,330.1	1,537.7	1,686.1	2,281.9	3.00	-3.00	0.00
7,800.0	4.61	47.64	7,429.5	1,544.9	1,694.0	2,292.5	3.00	-3.00	0.00
7,900.0	1.61	47.64	7,529.4	1,548.5	1,698.0	2,298.0	3.00	-3.00	0.00
<b>EOD @ Vertical / Build 1.5° / 100' - Ohio Creek</b>									
7,953.7	0.00	0.00	7,583.0	1,549.1	1,698.6	2,298.7	3.00	-3.00	0.00
8,000.0	0.70	215.00	7,629.3	1,548.8	1,698.4	2,298.4	1.50	1.50	0.00
<b>EOB @ 1.00° Inc. / 215.00° Azm</b>									
8,020.5	1.00	215.00	7,649.8	1,548.6	1,698.2	2,298.2	1.50	1.50	0.00
8,100.0	1.00	215.00	7,729.3	1,547.4	1,697.4	2,296.8	0.00	0.00	0.00
8,200.0	1.00	215.00	7,829.3	1,546.0	1,696.4	2,295.1	0.00	0.00	0.00
8,300.0	1.00	215.00	7,929.3	1,544.6	1,695.4	2,293.4	0.00	0.00	0.00
8,400.0	1.00	215.00	8,029.3	1,543.1	1,694.4	2,291.7	0.00	0.00	0.00
8,500.0	1.00	215.00	8,129.3	1,541.7	1,693.4	2,290.0	0.00	0.00	0.00
8,600.0	1.00	215.00	8,229.3	1,540.3	1,692.4	2,288.3	0.00	0.00	0.00

<b>Database:</b>	KLXDirectional-AD	<b>Local Co-ordinate Reference:</b>	Well RNPU B27 FED 25B-22 197 - Slot 25B-22
<b>Company:</b>	QB Energy Operating, LLC	<b>TVD Reference:</b>	RKB @ 6540.0usft (30')
<b>Project:</b>	Rio Blanco County, CO	<b>MD Reference:</b>	RKB @ 6540.0usft (30')
<b>Site:</b>	PCU B27 197 Pad	<b>North Reference:</b>	True
<b>Well:</b>	RNPU B27 FED 25B-22 197	<b>Survey Calculation Method:</b>	Minimum Curvature
<b>Wellbore:</b>	OH		
<b>Design:</b>	Prelim #2		

Planned Survey										
Measured Depth (usft)	Inclination (°)	Azimuth (°)	Vertical Depth (usft)	+N/-S (usft)	+E/-W (usft)	Vertical Section (usft)	Dogleg Rate (°/100usft)	Build Rate (°/100usft)	Turn Rate (°/100usft)	
8,700.0	1.00	215.00	8,329.2	1,538.8	1,691.4	2,286.6	0.00	0.00	0.00	
<b>Williams Fork</b>										
8,703.8	1.00	215.00	8,333.0	1,538.8	1,691.4	2,286.5	0.00	0.00	0.00	
8,800.0	1.00	215.00	8,429.2	1,537.4	1,690.4	2,284.9	0.00	0.00	0.00	
8,900.0	1.00	215.00	8,529.2	1,536.0	1,689.4	2,283.2	0.00	0.00	0.00	
9,000.0	1.00	215.00	8,629.2	1,534.5	1,688.4	2,281.5	0.00	0.00	0.00	
9,100.0	1.00	215.00	8,729.2	1,533.1	1,687.4	2,279.8	0.00	0.00	0.00	
9,200.0	1.00	215.00	8,829.2	1,531.7	1,686.4	2,278.1	0.00	0.00	0.00	
9,300.0	1.00	215.00	8,929.1	1,530.2	1,685.4	2,276.4	0.00	0.00	0.00	
9,400.0	1.00	215.00	9,029.1	1,528.8	1,684.4	2,274.6	0.00	0.00	0.00	
9,500.0	1.00	215.00	9,129.1	1,527.4	1,683.4	2,272.9	0.00	0.00	0.00	
9,600.0	1.00	215.00	9,229.1	1,525.9	1,682.4	2,271.2	0.00	0.00	0.00	
9,700.0	1.00	215.00	9,329.1	1,524.5	1,681.4	2,269.5	0.00	0.00	0.00	
9,800.0	1.00	215.00	9,429.1	1,523.1	1,680.4	2,267.8	0.00	0.00	0.00	
9,900.0	1.00	215.00	9,529.1	1,521.6	1,679.3	2,266.1	0.00	0.00	0.00	
10,000.0	1.00	215.00	9,629.0	1,520.2	1,678.3	2,264.4	0.00	0.00	0.00	
10,100.0	1.00	215.00	9,729.0	1,518.8	1,677.3	2,262.7	0.00	0.00	0.00	
10,200.0	1.00	215.00	9,829.0	1,517.3	1,676.3	2,261.0	0.00	0.00	0.00	
10,300.0	1.00	215.00	9,929.0	1,515.9	1,675.3	2,259.3	0.00	0.00	0.00	
10,400.0	1.00	215.00	10,029.0	1,514.5	1,674.3	2,257.6	0.00	0.00	0.00	
10,500.0	1.00	215.00	10,129.0	1,513.0	1,673.3	2,255.9	0.00	0.00	0.00	
10,600.0	1.00	215.00	10,228.9	1,511.6	1,672.3	2,254.2	0.00	0.00	0.00	
10,700.0	1.00	215.00	10,328.9	1,510.2	1,671.3	2,252.5	0.00	0.00	0.00	
10,800.0	1.00	215.00	10,428.9	1,508.7	1,670.3	2,250.8	0.00	0.00	0.00	
10,900.0	1.00	215.00	10,528.9	1,507.3	1,669.3	2,249.1	0.00	0.00	0.00	
11,000.0	1.00	215.00	10,628.9	1,505.9	1,668.3	2,247.4	0.00	0.00	0.00	
11,100.0	1.00	215.00	10,728.9	1,504.4	1,667.3	2,245.7	0.00	0.00	0.00	
11,200.0	1.00	215.00	10,828.9	1,503.0	1,666.3	2,244.0	0.00	0.00	0.00	
11,300.0	1.00	215.00	10,928.8	1,501.6	1,665.3	2,242.3	0.00	0.00	0.00	
11,400.0	1.00	215.00	11,028.8	1,500.1	1,664.3	2,240.6	0.00	0.00	0.00	
11,500.0	1.00	215.00	11,128.8	1,498.7	1,663.3	2,238.9	0.00	0.00	0.00	
11,600.0	1.00	215.00	11,228.8	1,497.3	1,662.3	2,237.2	0.00	0.00	0.00	
<b>Cameo</b>										
11,679.2	1.00	215.00	11,308.0	1,496.1	1,661.5	2,235.8	0.00	0.00	0.00	
11,700.0	1.00	215.00	11,328.8	1,495.8	1,661.3	2,235.5	0.00	0.00	0.00	
11,800.0	1.00	215.00	11,428.8	1,494.4	1,660.3	2,233.8	0.00	0.00	0.00	
11,900.0	1.00	215.00	11,528.7	1,493.0	1,659.3	2,232.1	0.00	0.00	0.00	
12,000.0	1.00	215.00	11,628.7	1,491.5	1,658.3	2,230.4	0.00	0.00	0.00	
12,100.0	1.00	215.00	11,728.7	1,490.1	1,657.3	2,228.6	0.00	0.00	0.00	
12,200.0	1.00	215.00	11,828.7	1,488.7	1,656.3	2,226.9	0.00	0.00	0.00	
<b>Rollins</b>										
12,229.3	1.00	215.00	11,858.0	1,488.2	1,656.0	2,226.4	0.00	0.00	0.00	
12,300.0	1.00	215.00	11,928.7	1,487.2	1,655.3	2,225.2	0.00	0.00	0.00	
<b>Cozzette</b>										
12,301.3	1.00	215.00	11,930.0	1,487.2	1,655.2	2,225.2	0.00	0.00	0.00	
12,400.0	1.00	215.00	12,028.7	1,485.8	1,654.3	2,223.5	0.00	0.00	0.00	
12,500.0	1.00	215.00	12,128.7	1,484.4	1,653.2	2,221.8	0.00	0.00	0.00	
12,600.0	1.00	215.00	12,228.6	1,482.9	1,652.2	2,220.1	0.00	0.00	0.00	
12,700.0	1.00	215.00	12,328.6	1,481.5	1,651.2	2,218.4	0.00	0.00	0.00	
12,800.0	1.00	215.00	12,428.6	1,480.1	1,650.2	2,216.7	0.00	0.00	0.00	
12,900.0	1.00	215.00	12,528.6	1,478.6	1,649.2	2,215.0	0.00	0.00	0.00	
<b>Corcoran</b>										

<b>Database:</b>	KLXDirectional-AD	<b>Local Co-ordinate Reference:</b>	Well RNPU B27 FED 25B-22 197 - Slot 25B-22
<b>Company:</b>	QB Energy Operating, LLC	<b>TVD Reference:</b>	RKB @ 6540.0usft (30')
<b>Project:</b>	Rio Blanco County, CO	<b>MD Reference:</b>	RKB @ 6540.0usft (30')
<b>Site:</b>	PCU B27 197 Pad	<b>North Reference:</b>	True
<b>Well:</b>	RNPU B27 FED 25B-22 197	<b>Survey Calculation Method:</b>	Minimum Curvature
<b>Wellbore:</b>	OH		
<b>Design:</b>	Prelim #2		

Planned Survey										
Measured Depth (usft)	Inclination (°)	Azimuth (°)	Vertical Depth (usft)	+N/-S (usft)	+E/-W (usft)	Vertical Section (usft)	Dogleg Rate (°/100usft)	Build Rate (°/100usft)	Turn Rate (°/100usft)	
12,901.4	1.00	215.00	12,530.0	1,478.6	1,649.2	2,215.0	0.00	0.00	0.00	
13,000.0	1.00	215.00	12,628.6	1,477.2	1,648.2	2,213.3	0.00	0.00	0.00	
13,100.0	1.00	215.00	12,728.6	1,475.8	1,647.2	2,211.6	0.00	0.00	0.00	
13,200.0	1.00	215.00	12,828.5	1,474.3	1,646.2	2,209.9	0.00	0.00	0.00	
13,300.0	1.00	215.00	12,928.5	1,472.9	1,645.2	2,208.2	0.00	0.00	0.00	
13,400.0	1.00	215.00	13,028.5	1,471.5	1,644.2	2,206.5	0.00	0.00	0.00	
13,500.0	1.00	215.00	13,128.5	1,470.0	1,643.2	2,204.8	0.00	0.00	0.00	
13,600.0	1.00	215.00	13,228.5	1,468.6	1,642.2	2,203.1	0.00	0.00	0.00	
<b>TD @ 13701.5' MD / 13330.0' TVD</b>										
13,701.5	1.00	215.00	13,330.0	1,467.1	1,641.2	2,201.4	0.00	0.00	0.00	

Design Targets										
Target Name	Dip Angle (°)	Dip Dir. (°)	TVD (usft)	+N/-S (usft)	+E/-W (usft)	Northing (usft)	Easting (usft)	Latitude	Longitude	
25B-22 - OHCR - hit/miss target - Shape - Point	0.00	0.00	7,583.0	1,549.1	1,698.6	14,517,957.83	2,407,725.73	39.945458	-108.262543	
25B-22 - PBHL - plan hits target center - Ellipse (radii L100.0 W50.0 on 215.00 azi)	0.00	0.00	13,330.0	1,467.1	1,641.2	14,517,874.20	2,407,670.90	39.945233	-108.262748	

Formations						
Measured Depth (usft)	Vertical Depth (usft)	Name	Lithology	Dip (°)	Dip Direction (°)	
2,583.3	2,479.0	Orange Marker				
2,738.7	2,626.0	Wasatch				
5,864.8	5,584.0	Wasatch G				
6,375.3	6,067.0	Fort Union				
7,953.7	7,583.0	Ohio Creek				
8,703.8	8,333.0	Williams Fork				
11,679.2	11,308.0	Cameo				
12,229.3	11,858.0	Rollins				
12,301.3	11,930.0	Cozzette				
12,901.4	12,530.0	Corcoran				

<b>Database:</b>	KLXDirectional-AD	<b>Local Co-ordinate Reference:</b>	Well RNPU B27 FED 25B-22 197 - Slot 25B-22
<b>Company:</b>	QB Energy Operating, LLC	<b>TVD Reference:</b>	RKB @ 6540.0usft (30')
<b>Project:</b>	Rio Blanco County, CO	<b>MD Reference:</b>	RKB @ 6540.0usft (30')
<b>Site:</b>	PCU B27 197 Pad	<b>North Reference:</b>	True
<b>Well:</b>	RNPU B27 FED 25B-22 197	<b>Survey Calculation Method:</b>	Minimum Curvature
<b>Wellbore:</b>	OH		
<b>Design:</b>	Prelim #2		

**Plan Annotations**

Measured Depth (usft)	Vertical Depth (usft)	Local Coordinates		Comment
		+N/-S (usft)	+E/-W (usft)	
225.0	225.0	0.0	0.0	Build 3° / 100'
854.2	842.9	69.2	75.9	EOB @ 18.88° Inc. / 47.64° Azm
7,324.4	6,965.1	1,479.8	1,622.7	Drop 3° /100'
7,953.7	7,583.0	1,549.1	1,698.6	EOD @ Vertical / Build 1.5° / 100'
8,020.5	7,649.8	1,548.6	1,698.2	EOB @ 1.00° Inc. / 215.00° Azm
13,701.5	13,330.0	1,467.1	1,641.2	TD @ 13701.5' MD / 13330.0' TVD