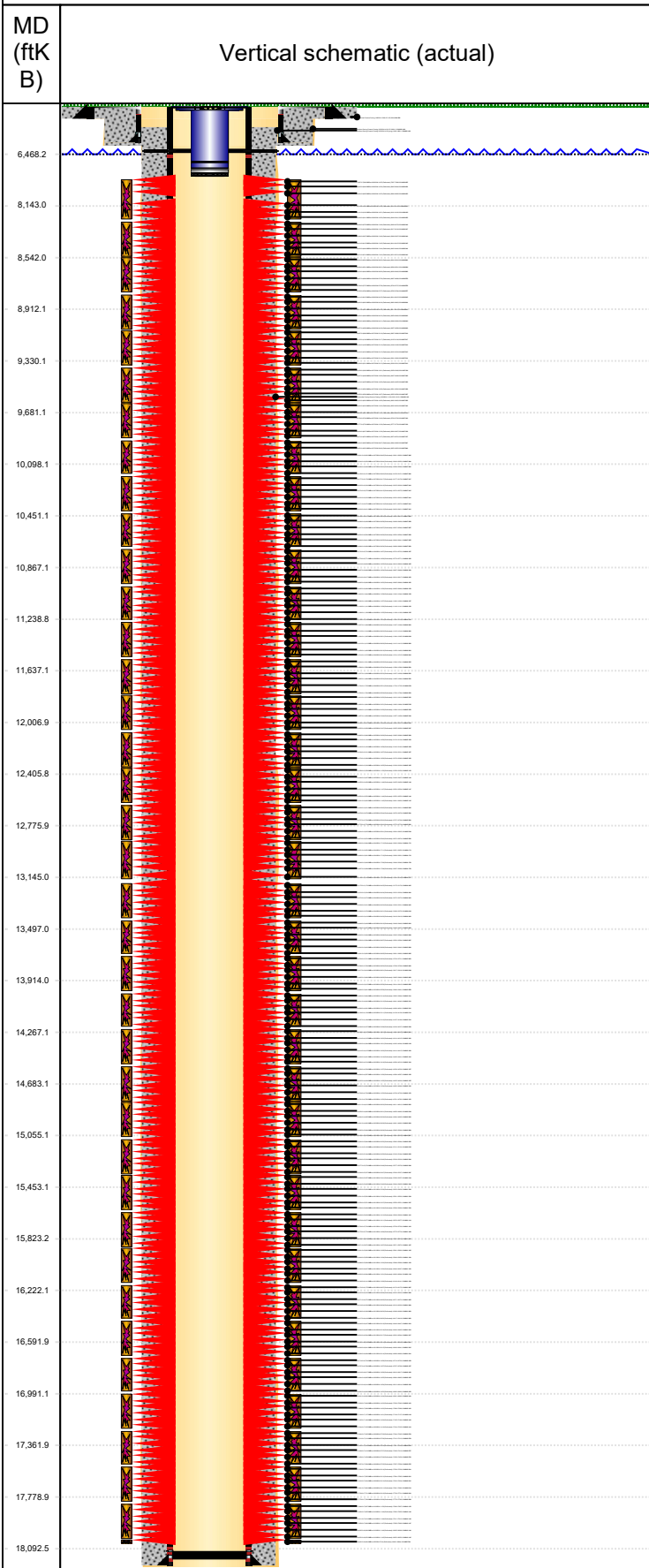




# P&A Wellbore For State

Well Name: George 05N

Original Hole [Land]



Well Header					
Surface UWI 0512351771	Business Unit Rockies	Gov Auth Dist Evans	Prod Tree Loc Land		
Orig. KB to Gnd (ft) 25.00	Original Spud Date 3/18/2024	Abandon Date	Well Sub-Status PR	High...	N
Comment					

Surface Location (Congressional)								
Qtr 3 SW	Qtr 4 NE	Section 21	Twnshp 4	Twnsh... N	Range 64	Rng E/... W	Latitude (°) 40.30019	Longitude (°) -104.554758

Wellbore Sections			
Section Des	Hole Size (in)	Top Depth (ftKB)	Btm Depth (ftKB)
Conductor	16	25.0	105.0
Surface	13 1/2	105.0	1,999.0
Production	8 1/2	1,999.0	18,129.0

Casing Strings						
Csg Des	Run Date	OD (in)	Wt/Len (lb/ft)	Grade	Top Depth (MD) (ftKB)	Set Depth (MD) (ftKB)
Conductor	2/6/2024	16	84.00	J-55	25	105
Surface	3/2/2024	9 5/8	36.00	J-55	25	1989.1
Production	3/20/2024	5 1/2	20.00	P-110	25	18121

Cement			
Des	Start Date	Top (ftKB)	Btm (ftKB)
Conductor Cement	2/6/2024	25.0	105.0
Surface	3/2/2024	25.0	1,989.1
Production Casing Cement	3/20/2024	1,029.0	18,121.0

Zone Statuses					
Zone Name	Status Date	Status	Fluid Type	Job	Prod Method
Niobrara	11/14/2024	Open	Oil	Complete, 6/5/2024 06:00	Naturally Flowing
Niobrara	11/14/2024	Open	Gas	Complete, 6/5/2024 06:00	Naturally Flowing

Perforation Data					
Linked Zone	Explosive Type	Entered Shot Total	Top (ftKB)	Btm (ftKB)	Date
Niobrara, Original Hole		4	7,997.0	7,998.0	9/28/2024
Niobrara, Original Hole		4	8,045.0	8,046.0	9/28/2024
Niobrara, Original Hole		4	8,094.0	8,095.0	9/28/2024
Niobrara, Original Hole		4	8,142.0	8,143.0	9/28/2024
Niobrara, Original Hole		4	8,191.0	8,192.0	9/28/2024
Niobrara, Original Hole		4	8,240.0	8,241.0	9/28/2024
Niobrara, Original Hole		4	8,269.0	8,270.0	9/28/2024
Niobrara, Original Hole		4	8,317.0	8,318.0	9/28/2024
Niobrara, Original Hole		4	8,366.0	8,367.0	9/28/2024
Niobrara, Original Hole		4	8,414.0	8,415.0	9/28/2024
Niobrara, Original Hole		4	8,463.0	8,464.0	9/28/2024
Niobrara, Original Hole		4	8,512.0	8,513.0	9/28/2024
Niobrara, Original Hole		4	8,542.0	8,543.0	9/28/2024
Niobrara, Original Hole		4	8,590.0	8,591.0	9/28/2024
Niobrara, Original Hole		4	8,639.0	8,640.0	9/28/2024
Niobrara, Original Hole		4	8,687.0	8,688.0	9/28/2024
Niobrara, Original Hole		4	8,736.0	8,737.0	9/28/2024
Niobrara, Original Hole		4	8,785.0	8,786.0	9/28/2024
Niobrara, Original Hole		4	8,814.0	8,815.0	9/28/2024
Niobrara, Original Hole		4	8,862.0	8,863.0	9/28/2024
Niobrara, Original Hole		4	8,911.0	8,912.0	9/28/2024
Niobrara, Original Hole		4	8,959.0	8,960.0	9/28/2024
Niobrara, Original Hole		4	9,008.0	9,009.0	9/28/2024
Niobrara, Original Hole		4	9,057.0	9,058.0	9/28/2024
Niobrara, Original Hole		4	9,087.0	9,088.0	9/27/2024
Niobrara, Original Hole		4	9,135.0	9,136.0	9/27/2024
Niobrara, Original Hole		4	9,184.0	9,185.0	9/27/2024
Niobrara, Original Hole		4	9,232.0	9,233.0	9/27/2024
Niobrara, Original Hole		4	9,281.0	9,282.0	9/27/2024
Niobrara, Original Hole		4	9,330.0	9,331.0	9/27/2024
Niobrara, Original Hole		4	9,359.0	9,360.0	9/27/2024
Niobrara, Original Hole		4	9,407.0	9,408.0	9/27/2024
Niobrara, Original Hole		4	9,454.0	9,455.0	9/27/2024
Niobrara, Original Hole		4	9,501.0	9,502.0	9/27/2024



# P&A Wellbore For State

Well Name: George 05N

Original Hole [Land]		Perforation Data					
MD (ftKB)	Vertical schematic (actual)	Linked Zone	Explosive Type	Entered Shot Total	Top (ftKB)	Btm (ftKB)	Date
		Niobrara, Original Hole		4	9,555.0	9,556.0	9/27/2024
		Niobrara, Original Hole		4	9,602.0	9,603.0	9/27/2024
		Niobrara, Original Hole		4	9,632.0	9,633.0	9/27/2024
		Niobrara, Original Hole		4	9,680.0	9,681.0	9/27/2024
		Niobrara, Original Hole		4	9,729.0	9,730.0	9/27/2024
		Niobrara, Original Hole		4	9,777.0	9,778.0	9/27/2024
		Niobrara, Original Hole		4	9,826.0	9,827.0	9/27/2024
		Niobrara, Original Hole		4	9,873.0	9,874.0	9/27/2024
		Niobrara, Original Hole		4	9,904.0	9,905.0	9/27/2024
		Niobrara, Original Hole		4	9,952.0	9,953.0	9/27/2024
		Niobrara, Original Hole		4	10,001.0	10,002.0	9/27/2024
		Niobrara, Original Hole		4	10,049.0	10,050.0	9/27/2024
		Niobrara, Original Hole		4	10,098.0	10,099.0	9/27/2024
		Niobrara, Original Hole		4	10,150.0	10,151.0	9/27/2024
		Niobrara, Original Hole		4	10,177.0	10,178.0	9/27/2024
		Niobrara, Original Hole		4	10,225.0	10,226.0	9/27/2024
		Niobrara, Original Hole		4	10,274.0	10,275.0	9/27/2024
		Niobrara, Original Hole		4	10,322.0	10,323.0	9/27/2024
		Niobrara, Original Hole		4	10,371.0	10,372.0	9/27/2024
		Niobrara, Original Hole		4	10,420.0	10,421.0	9/27/2024
		Niobrara, Original Hole		4	10,450.0	10,451.0	9/27/2024
		Niobrara, Original Hole		4	10,498.0	10,499.0	9/27/2024
		Niobrara, Original Hole		4	10,547.0	10,548.0	9/27/2024
		Niobrara, Original Hole		4	10,593.0	10,594.0	9/27/2024
		Niobrara, Original Hole		4	10,640.0	10,641.0	9/27/2024
		Niobrara, Original Hole		4	10,688.0	10,689.0	9/27/2024
		Niobrara, Original Hole		4	10,722.0	10,723.0	9/26/2024
		Niobrara, Original Hole		4	10,770.0	10,771.0	9/26/2024
		Niobrara, Original Hole		4	10,819.0	10,820.0	9/26/2024
		Niobrara, Original Hole		4	10,867.0	10,868.0	9/26/2024
		Niobrara, Original Hole		4	10,916.0	10,917.0	9/26/2024
		Niobrara, Original Hole		4	10,965.0	10,966.0	9/26/2024
		Niobrara, Original Hole		4	10,995.0	10,996.0	9/26/2024
		Niobrara, Original Hole		4	11,043.0	11,044.0	9/26/2024
		Niobrara, Original Hole		4	11,092.0	11,093.0	9/26/2024
		Niobrara, Original Hole		4	11,140.0	11,141.0	9/26/2024
		Niobrara, Original Hole		4	11,189.0	11,190.0	9/26/2024
		Niobrara, Original Hole		4	11,238.0	11,239.0	9/26/2024
		Niobrara, Original Hole		4	11,267.0	11,268.0	9/26/2024
		Niobrara, Original Hole		4	11,315.0	11,316.0	9/26/2024
		Niobrara, Original Hole		4	11,364.0	11,365.0	9/26/2024
		Niobrara, Original Hole		4	11,412.0	11,413.0	9/26/2024
		Niobrara, Original Hole		4	11,459.0	11,460.0	9/26/2024
		Niobrara, Original Hole		4	11,514.0	11,515.0	9/26/2024
		Niobrara, Original Hole		4	11,540.0	11,541.0	9/26/2024
		Niobrara, Original Hole		4	11,588.0	11,589.0	9/26/2024
		Niobrara, Original Hole		4	11,637.0	11,638.0	9/26/2024
		Niobrara, Original Hole		4	11,685.0	11,686.0	9/26/2024
		Niobrara, Original Hole		4	11,734.0	11,735.0	9/26/2024
		Niobrara, Original Hole		4	11,783.0	11,784.0	9/26/2024
		Niobrara, Original Hole		4	11,812.0	11,813.0	9/25/2024
		Niobrara, Original Hole		4	11,863.0	11,864.0	9/25/2024
		Niobrara, Original Hole		4	11,909.0	11,910.0	9/25/2024
		Niobrara, Original Hole		4	11,957.0	11,958.0	9/25/2024
		Niobrara, Original Hole		4	12,006.0	12,007.0	9/25/2024
		Niobrara, Original Hole		4	12,055.0	12,056.0	9/25/2024
		Niobrara, Original Hole		4	12,085.0	12,086.0	9/25/2024
		Niobrara, Original Hole		4	12,133.0	12,134.0	9/25/2024
		Niobrara, Original Hole		4	12,182.0	12,183.0	9/25/2024
		Niobrara, Original Hole		4	12,230.0	12,231.0	9/25/2024



# P&A Wellbore For State

Well Name: George 05N

Original Hole [Land]		Perforation Data					
MD (ftKB)	Vertical schematic (actual)	Linked Zone	Explosive Type	Entered Shot Total	Top (ftKB)	Btm (ftKB)	Date
6,468.2		Niobrara, Original Hole		4	12,279.0	12,280.0	9/25/2024
8,143.0		Niobrara, Original Hole		4	12,328.0	12,329.0	9/25/2024
8,542.0		Niobrara, Original Hole		4	12,358.0	12,359.0	9/25/2024
8,912.1		Niobrara, Original Hole		4	12,406.0	12,407.0	9/25/2024
9,330.1		Niobrara, Original Hole		4	12,455.0	12,456.0	9/25/2024
9,681.1		Niobrara, Original Hole		4	12,503.0	12,504.0	9/25/2024
10,098.1		Niobrara, Original Hole		4	12,552.0	12,553.0	9/25/2024
10,451.1		Niobrara, Original Hole		4	12,601.0	12,602.0	9/25/2024
10,867.1		Niobrara, Original Hole		4	12,630.0	12,631.0	9/25/2024
11,238.8		Niobrara, Original Hole		4	12,678.0	12,679.0	9/25/2024
11,637.1		Niobrara, Original Hole		4	12,727.0	12,728.0	9/25/2024
12,006.9		Niobrara, Original Hole		4	12,775.0	12,776.0	9/25/2024
12,405.8		Niobrara, Original Hole		4	12,824.0	12,825.0	9/25/2024
12,775.9		Niobrara, Original Hole		4	12,873.0	12,874.0	9/25/2024
13,145.0		Niobrara, Original Hole		4	12,903.0	12,904.0	9/24/2024
13,497.0		Niobrara, Original Hole		4	12,951.0	12,952.0	9/24/2024
13,914.0		Niobrara, Original Hole		4	13,000.0	13,001.0	9/24/2024
14,267.1		Niobrara, Original Hole		4	13,048.0	13,049.0	9/24/2024
14,683.1		Niobrara, Original Hole		4	13,097.0	13,098.0	9/24/2024
15,055.1		Niobrara, Original Hole		4	13,144.0	13,145.0	9/24/2024
15,453.1		Niobrara, Original Hole		4	13,175.0	13,176.0	9/24/2024
15,823.2		Niobrara, Original Hole		4	13,223.0	13,224.0	9/24/2024
16,222.1		Niobrara, Original Hole		4	13,272.0	13,273.0	9/24/2024
16,591.9		Niobrara, Original Hole		4	13,320.0	13,321.0	9/24/2024
16,991.1		Niobrara, Original Hole		4	13,369.0	13,370.0	9/24/2024
17,361.9		Niobrara, Original Hole		4	13,418.0	13,419.0	9/24/2024
17,778.9		Niobrara, Original Hole		4	13,448.0	13,449.0	9/23/2024
18,092.5		Niobrara, Original Hole		4	13,496.0	13,497.0	9/23/2024
		Niobrara, Original Hole		4	13,545.0	13,546.0	9/23/2024
		Niobrara, Original Hole		4	13,593.0	13,594.0	9/23/2024
		Niobrara, Original Hole		4	13,642.0	13,643.0	9/23/2024
		Niobrara, Original Hole		4	13,691.0	13,692.0	9/23/2024
		Niobrara, Original Hole		4	13,720.0	13,721.0	9/23/2024
		Niobrara, Original Hole		4	13,768.0	13,769.0	9/23/2024
		Niobrara, Original Hole		4	13,817.0	13,818.0	9/23/2024
		Niobrara, Original Hole		4	13,865.0	13,866.0	9/23/2024
		Niobrara, Original Hole		4	13,914.0	13,915.0	9/23/2024
		Niobrara, Original Hole		4	13,960.0	13,961.0	9/23/2024
		Niobrara, Original Hole		4	13,993.0	13,994.0	9/22/2024
		Niobrara, Original Hole		4	14,041.0	14,042.0	9/22/2024
	Niobrara, Original Hole		4	14,090.0	14,091.0	9/22/2024	
	Niobrara, Original Hole		4	14,138.0	14,139.0	9/22/2024	
	Niobrara, Original Hole		4	14,187.0	14,188.0	9/22/2024	
	Niobrara, Original Hole		4	14,236.0	14,237.0	9/22/2024	
	Niobrara, Original Hole		4	14,266.0	14,267.0	9/22/2024	
	Niobrara, Original Hole		4	14,314.0	14,315.0	9/22/2024	
	Niobrara, Original Hole		4	14,363.0	14,364.0	9/22/2024	
	Niobrara, Original Hole		4	14,414.0	14,415.0	9/22/2024	
	Niobrara, Original Hole		4	14,460.0	14,461.0	9/22/2024	
	Niobrara, Original Hole		4	14,509.0	14,510.0	9/22/2024	
	Niobrara, Original Hole		4	14,538.0	14,539.0	9/22/2024	
	Niobrara, Original Hole		4	14,586.0	14,587.0	9/22/2024	
	Niobrara, Original Hole		4	14,635.0	14,636.0	9/22/2024	
	Niobrara, Original Hole		4	14,683.0	14,684.0	9/22/2024	
	Niobrara, Original Hole		4	14,729.0	14,730.0	9/22/2024	
	Niobrara, Original Hole		4	14,781.0	14,782.0	9/22/2024	
	Niobrara, Original Hole		4	14,811.0	14,812.0	9/22/2024	
	Niobrara, Original Hole		4	14,859.0	14,860.0	9/22/2024	
	Niobrara, Original Hole		4	14,904.0	14,905.0	9/22/2024	
	Niobrara, Original Hole		4	14,961.0	14,962.0	9/22/2024	



# P&A Wellbore For State

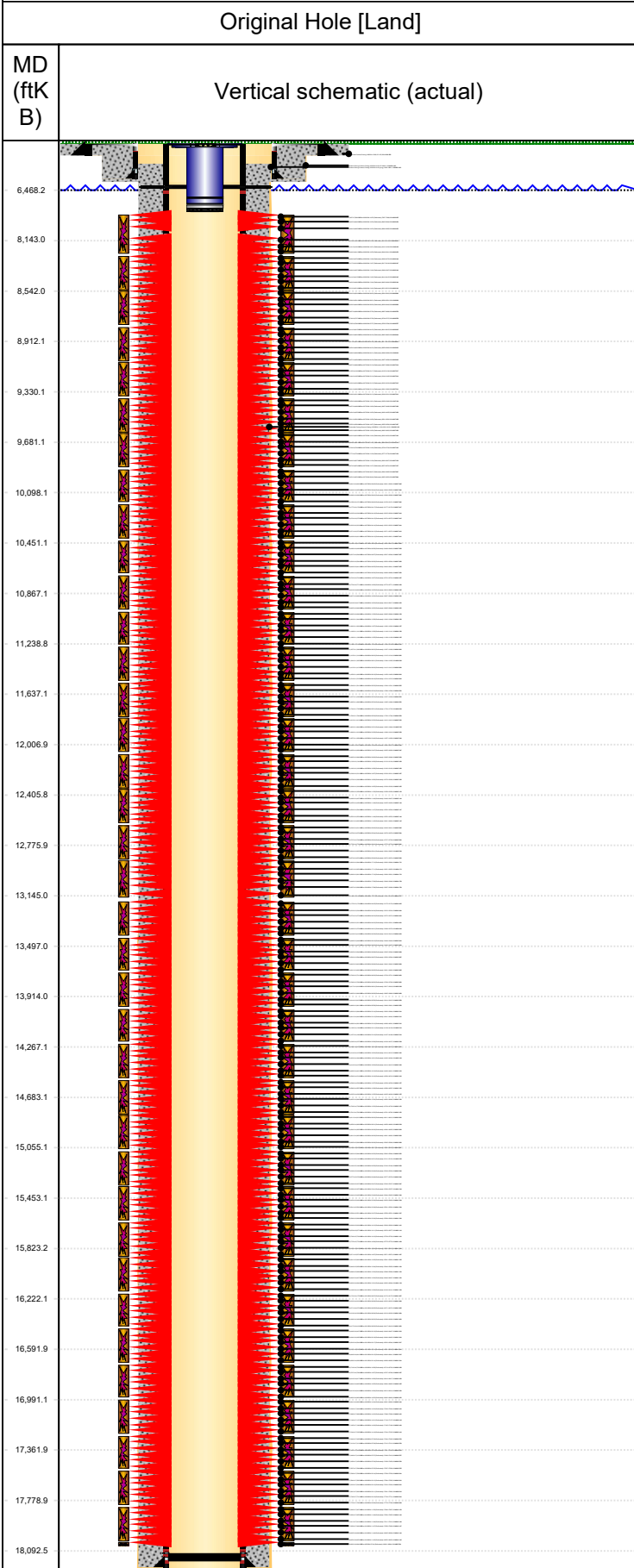
Well Name: George 05N

Original Hole [Land]		Perforation Data					
MD (ftKB)	Vertical schematic (actual)	Linked Zone	Explosive Type	Entered Shot Total	Top (ftKB)	Btm (ftKB)	Date
		Niobrara, Original Hole		4	15,005.0	15,006.0	9/22/2024
		Niobrara, Original Hole		4	15,054.0	15,055.0	9/22/2024
		Niobrara, Original Hole		4	15,083.0	15,084.0	9/22/2024
		Niobrara, Original Hole		4	15,131.0	15,132.0	9/22/2024
		Niobrara, Original Hole		4	15,183.0	15,184.0	9/22/2024
6,468.2		Niobrara, Original Hole		4	15,228.0	15,229.0	9/22/2024
		Niobrara, Original Hole		4	15,277.0	15,278.0	9/22/2024
8,143.0		Niobrara, Original Hole		4	15,326.0	15,327.0	9/22/2024
		Niobrara, Original Hole		4	15,356.0	15,357.0	9/21/2024
8,542.0		Niobrara, Original Hole		4	15,404.0	15,405.0	9/21/2024
		Niobrara, Original Hole		4	15,453.0	15,454.0	9/21/2024
8,912.1		Niobrara, Original Hole		4	15,501.0	15,502.0	9/21/2024
		Niobrara, Original Hole		4	15,550.0	15,551.0	9/21/2024
9,330.1		Niobrara, Original Hole		4	15,599.0	15,600.0	9/21/2024
		Niobrara, Original Hole		4	15,628.0	15,629.0	9/21/2024
9,681.1		Niobrara, Original Hole		4	15,676.0	15,677.0	9/21/2024
		Niobrara, Original Hole		4	15,728.0	15,729.0	9/21/2024
10,098.1		Niobrara, Original Hole		4	15,775.0	15,776.0	9/21/2024
		Niobrara, Original Hole		4	15,822.0	15,823.0	9/21/2024
10,451.1		Niobrara, Original Hole		4	15,871.0	15,872.0	9/21/2024
		Niobrara, Original Hole		4	15,901.0	15,902.0	9/21/2024
10,867.1		Niobrara, Original Hole		4	15,949.0	15,950.0	9/21/2024
		Niobrara, Original Hole		4	15,998.0	15,999.0	9/21/2024
11,238.8		Niobrara, Original Hole		4	16,046.0	16,047.0	9/21/2024
		Niobrara, Original Hole		4	16,093.0	16,094.0	9/21/2024
11,637.1		Niobrara, Original Hole		4	16,140.0	16,141.0	9/21/2024
		Niobrara, Original Hole		4	16,174.0	16,175.0	9/21/2024
12,006.9		Niobrara, Original Hole		4	16,222.0	16,223.0	9/21/2024
		Niobrara, Original Hole		4	16,271.0	16,272.0	9/21/2024
12,405.8		Niobrara, Original Hole		4	16,319.0	16,320.0	9/21/2024
		Niobrara, Original Hole		4	16,368.0	16,369.0	9/21/2024
12,775.9		Niobrara, Original Hole		4	16,417.0	16,418.0	9/21/2024
		Niobrara, Original Hole		4	16,446.0	16,447.0	9/21/2024
13,145.0		Niobrara, Original Hole		4	16,494.0	16,495.0	9/21/2024
		Niobrara, Original Hole		4	16,543.0	16,544.0	9/21/2024
13,497.0		Niobrara, Original Hole		4	16,591.0	16,592.0	9/21/2024
		Niobrara, Original Hole		4	16,640.0	16,641.0	9/21/2024
13,914.0		Niobrara, Original Hole		4	16,689.0	16,690.0	9/21/2024
		Niobrara, Original Hole		4	16,719.0	16,720.0	9/20/2024
14,267.1		Niobrara, Original Hole		4	16,767.0	16,768.0	9/20/2024
		Niobrara, Original Hole		4	16,816.0	16,817.0	9/20/2024
14,683.1		Niobrara, Original Hole		4	16,864.0	16,865.0	9/20/2024
		Niobrara, Original Hole		4	16,913.0	16,914.0	9/20/2024
15,055.1		Niobrara, Original Hole		4	16,962.0	16,963.0	9/20/2024
		Niobrara, Original Hole		4	16,991.0	16,992.0	9/20/2024
15,453.1		Niobrara, Original Hole		4	17,039.0	17,040.0	9/20/2024
		Niobrara, Original Hole		4	17,088.0	17,089.0	9/20/2024
15,823.2		Niobrara, Original Hole		4	17,136.0	17,137.0	9/20/2024
		Niobrara, Original Hole		4	17,185.0	17,186.0	9/20/2024
16,222.1		Niobrara, Original Hole		4	17,234.0	17,235.0	9/20/2024
		Niobrara, Original Hole		4	17,264.0	17,265.0	9/20/2024
16,591.9		Niobrara, Original Hole		4	17,312.0	17,313.0	9/20/2024
		Niobrara, Original Hole		4	17,361.0	17,362.0	9/20/2024
16,991.1		Niobrara, Original Hole		4	17,409.0	17,410.0	9/20/2024
		Niobrara, Original Hole		4	17,458.0	17,459.0	9/20/2024
17,361.9		Niobrara, Original Hole		4	17,507.0	17,508.0	9/20/2024
		Niobrara, Original Hole		4	17,538.0	17,539.0	9/20/2024
17,778.9		Niobrara, Original Hole		4	17,584.0	17,585.0	9/20/2024
		Niobrara, Original Hole		4	17,633.0	17,634.0	9/20/2024
18,092.5		Niobrara, Original Hole		4	17,681.0	17,682.0	9/20/2024



# P&A Wellbore For State

Well Name: George 05N



Perforation Data					
Linked Zone	Explosive Type	Entered Shot Total	Top (ftKB)	Btm (ftKB)	Date
Niobrara, Original Hole		4	17,730.0	17,731.0	9/20/2024
Niobrara, Original Hole		4	17,779.0	17,780.0	9/20/2024
Niobrara, Original Hole		4	17,806.0	17,807.0	9/19/2024
Niobrara, Original Hole		4	17,854.0	17,855.0	9/19/2024
Niobrara, Original Hole		4	17,911.0	17,912.0	9/19/2024
Niobrara, Original Hole		4	17,959.0	17,960.0	9/19/2024
Niobrara, Original Hole		4	18,005.0	18,006.0	9/19/2024
Niobrara, Original Hole		4	18,052.0	18,053.0	9/19/2024
Niobrara, Original Hole		12	18,082.0	18,084.0	8/5/2024

Stim/Frac Stage			
Zone	Start Date	Top (ftKB)	Btm (ftKB)
Niobrara, Original Hole	9/28/2024	7,997.0	8,241.0
Niobrara, Original Hole	9/28/2024	8,269.0	8,513.0
Niobrara, Original Hole	9/28/2024	8,542.0	8,786.0
Niobrara, Original Hole	9/28/2024	8,814.0	9,058.0
Niobrara, Original Hole	9/28/2024	9,087.0	9,331.0
Niobrara, Original Hole	9/27/2024	9,359.0	9,603.0
Niobrara, Original Hole	9/27/2024	9,632.0	9,874.0
Niobrara, Original Hole	9/27/2024	9,904.0	10,151.0
Niobrara, Original Hole	9/27/2024	10,177.0	10,421.0
Niobrara, Original Hole	9/27/2024	10,450.0	10,689.0
Niobrara, Original Hole	9/26/2024	10,722.0	10,966.0
Niobrara, Original Hole	9/26/2024	10,995.0	11,239.0
Niobrara, Original Hole	9/26/2024	11,267.0	11,515.0
Niobrara, Original Hole	9/26/2024	11,540.0	11,784.0
Niobrara, Original Hole	9/26/2024	11,812.0	12,056.0
Niobrara, Original Hole	9/25/2024	12,085.0	12,329.0
Niobrara, Original Hole	9/25/2024	12,358.0	12,602.0
Niobrara, Original Hole	9/25/2024	12,630.0	12,874.0
Niobrara, Original Hole	9/25/2024	12,903.0	13,145.0
Niobrara, Original Hole	9/24/2024	13,175.0	13,419.0
Niobrara, Original Hole	9/24/2024	13,448.0	13,692.0
Niobrara, Original Hole	9/23/2024	13,720.0	13,961.0
Niobrara, Original Hole	9/23/2024	13,993.0	14,237.0
Niobrara, Original Hole	9/22/2024	14,266.0	14,510.0
Niobrara, Original Hole	9/22/2024	14,538.0	14,782.0
Niobrara, Original Hole	9/22/2024	14,811.0	15,055.0
Niobrara, Original Hole	9/22/2024	15,083.0	15,327.0
Niobrara, Original Hole	9/22/2024	15,356.0	15,600.0
Niobrara, Original Hole	9/21/2024	15,628.0	15,872.0
Niobrara, Original Hole	9/21/2024	15,901.0	16,141.0
Niobrara, Original Hole	9/21/2024	16,174.0	16,418.0
Niobrara, Original Hole	9/21/2024	16,446.0	16,690.0
Niobrara, Original Hole	9/20/2024	16,719.0	16,963.0
Niobrara, Original Hole	9/20/2024	16,991.0	17,235.0
Niobrara, Original Hole	9/20/2024	17,264.0	17,508.0
Niobrara, Original Hole	9/20/2024	17,538.0	17,780.0
Niobrara, Original Hole	9/19/2024	17,806.0	18,053.0
Niobrara, Original Hole	9/19/2024	18,082.0	18,084.0

Other In Hole					
Run Date	Des	Make	OD (in)	Top (ftKB)	Btm (ftKB)

Logs			
Date	Type	Depth Top (MD) (ftKB)	Btm (ftKB)

Wellbore Plug Back Total Depths			
Date	Type	Com	PBTD (ftKB)
10/20/2024	Ball Seat	CLEANOUT	18,085
11/25/2024	Float Collar		18,108