



Release Location: 40.187928,-104.342822

Date:	August 2024
Designed By:	KPK
Drawn By:	CC

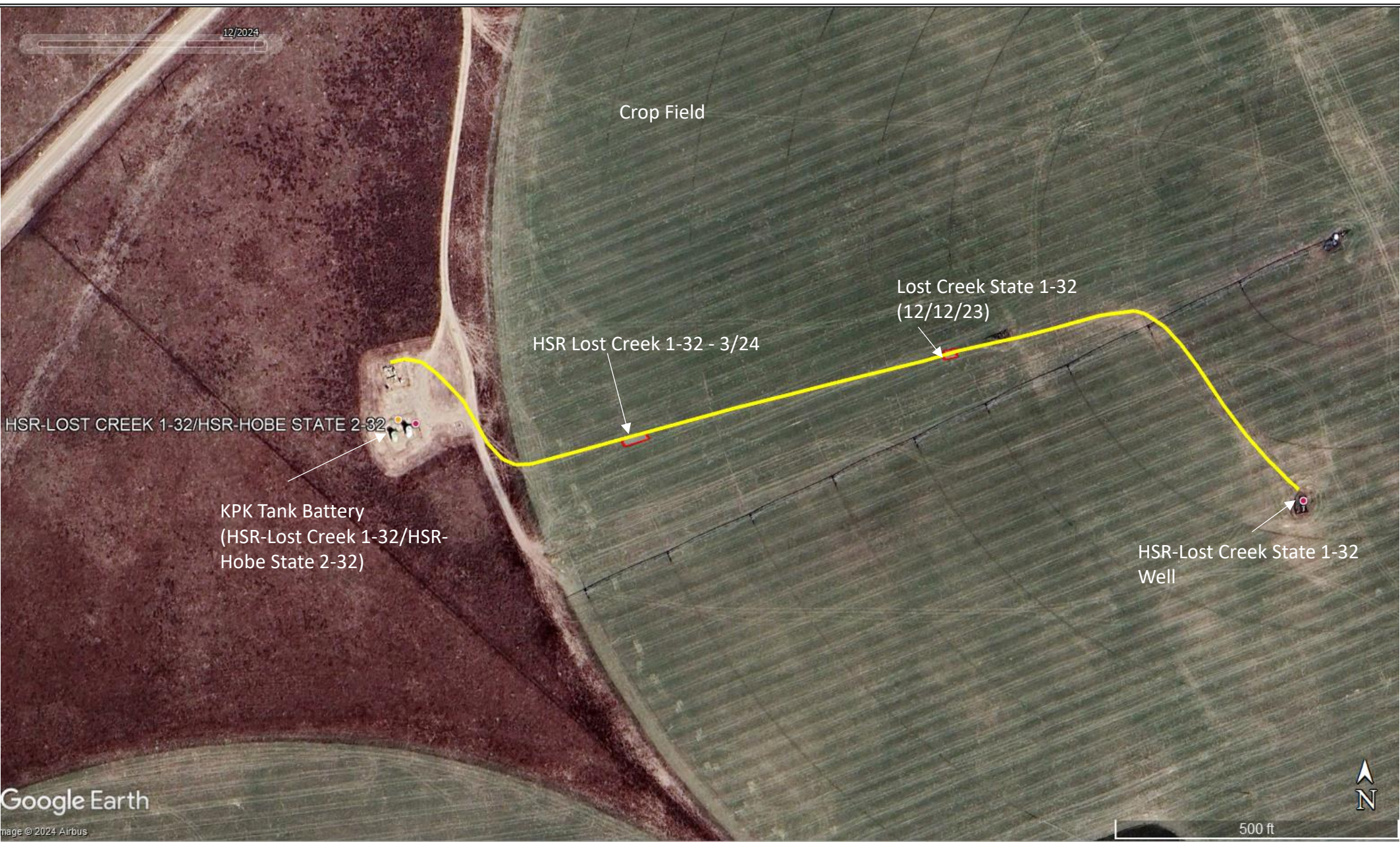




K.P. Kauffman Company, Inc.  
1700 Lincoln St. Suite 4550  
Denver CO, 80202

K.P. Kauffman Company, Inc.  
Lost Creek State 1-32 Flowline  
NENE, Section 32, Township 3 North, Range 62 West  
Weld County, Colorado

Topographic Map





-  KPK Flowline
-  Excavation Extent

Date:	December 2024
Designed By:	KPK
Drawn By:	CC



K.P. KAUFFMAN COMPANY, INC.

K.P. Kauffman Company, Inc.  
1700 Lincoln St. Suite 4550  
Denver CO, 80202

**K.P. Kauffman Company, Inc.**  
Lost Creek State 1-32 Flowline  
NENE, Section 32, Township 3 North, Range 62 West  
Weld County, Colorado

**Site Map**