

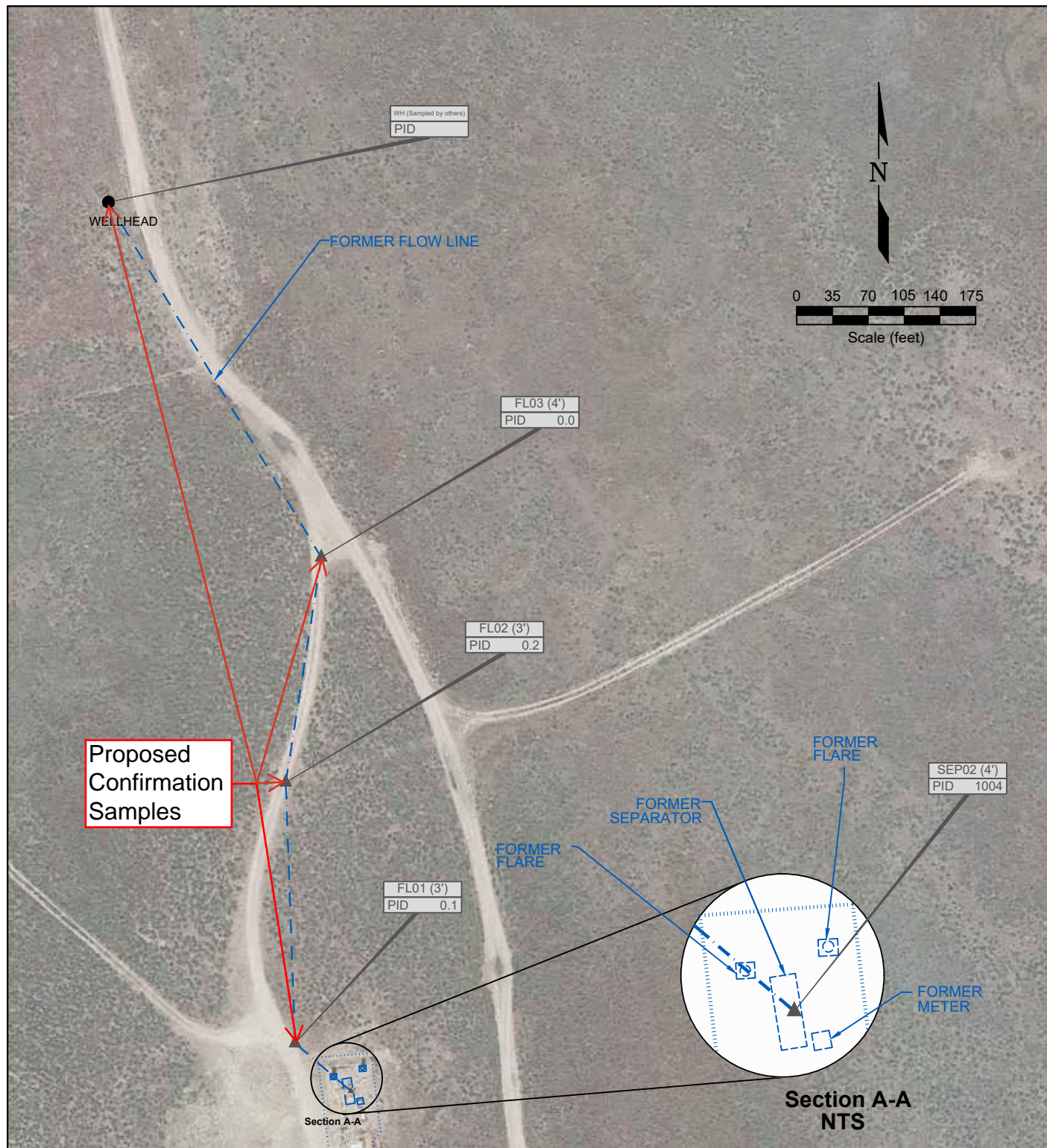
USGS 7.5 MINUTE SERIES (TOPOGRAPHIC)

Figure 1
SITE LOCATION MAP

NOBLE ENERGY INC - SPIKE STATE CC 30-20
 NESW Sec. 30, T4N, R63W, 6th PM
 Weld County, Colorado
 40.283074°, -104.484568°

Project # CO23-156	API # 05-123-25434	Facility #
Date 08/29/2023	Remediation # 26813	Filename 23156T





LEGEND

- WELLHEAD LOCATION
- ▲ PID READING LOCATION
- ABOVE GROUND STORAGE TANK
- FORMER FORMER FACILITY
- FLOW LINE
- CONTAINMENT BERM

FL01 PID READING LOCATION IDENTIFICATION
PID 0.1 PHOTO IONIZATION DETECTION (ppm)

Figure 2
SITE MAP

NOBLE ENERGY INC - SPIKE STATE CC 30-20
 NESW Sec. 30, T4N, R63W, 6th PM
 Weld County, Colorado
 40.283074°, -104.484568°

Project # CO23-156	API # 05-123-25434	Facility #
Date 08/29/2023	Remediation # 26813	Filename 23156T



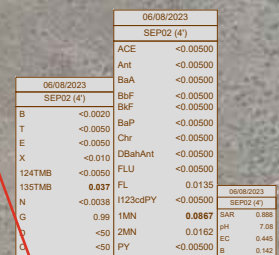



Figure 3
SOIL CHEMISTRY MAP

NOBLE ENERGY INC - SPIKE STATE CC 30-20
 NESW Sec. 30, T4N, R63W, 6th PM
 Weld County, Colorado
 40.283074°, -104.484568°

Project # CO23-156	API # 05-123-25434	Facility #	
Date 08/29/2023	Remediation # 26813	Filename 23156T	