

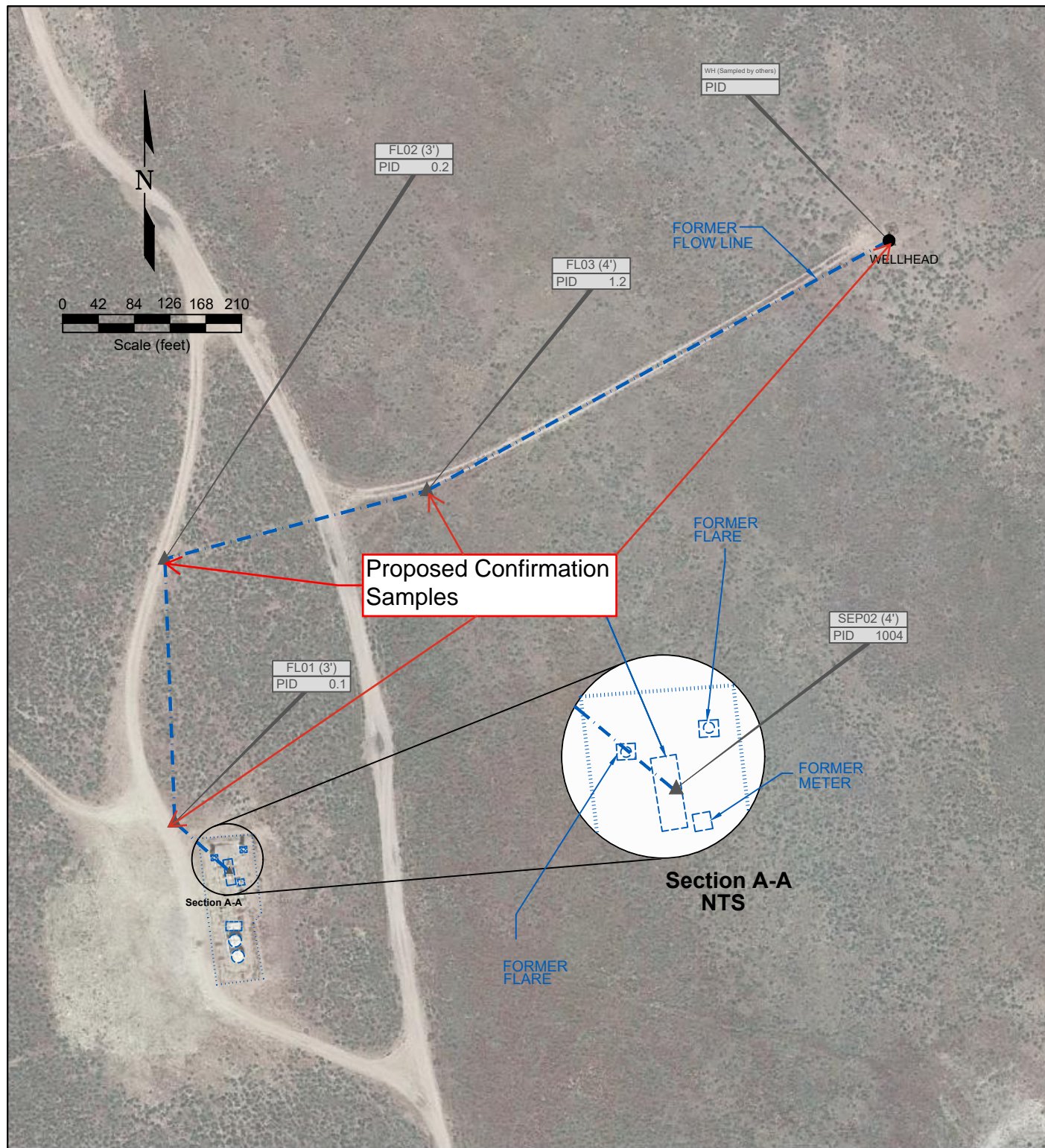
Figure 1
SITE LOCATION MAP

NOBLE ENERGY INC - SPIKE STATE CC 30-21
 NESW Sec. 30, T4N, R63W, 6th PM
 Weld County, Colorado
 40.282399°, -104.481537°

Project # CO23-160	API # 05-123-25432	Facility #
Date 09/2/2023	Remediation # 26815	Filename 23160T



USGS 7.5 MINUTE SERIES (TOPOGRAPHIC)



LEGEND

- WELLHEAD LOCATION
- ▲ PID READING LOCATION
- ABOVE GROUND STORAGE TANK
- FORMER FACILITY
- FLOW LINE
- CONTAINMENT BERM

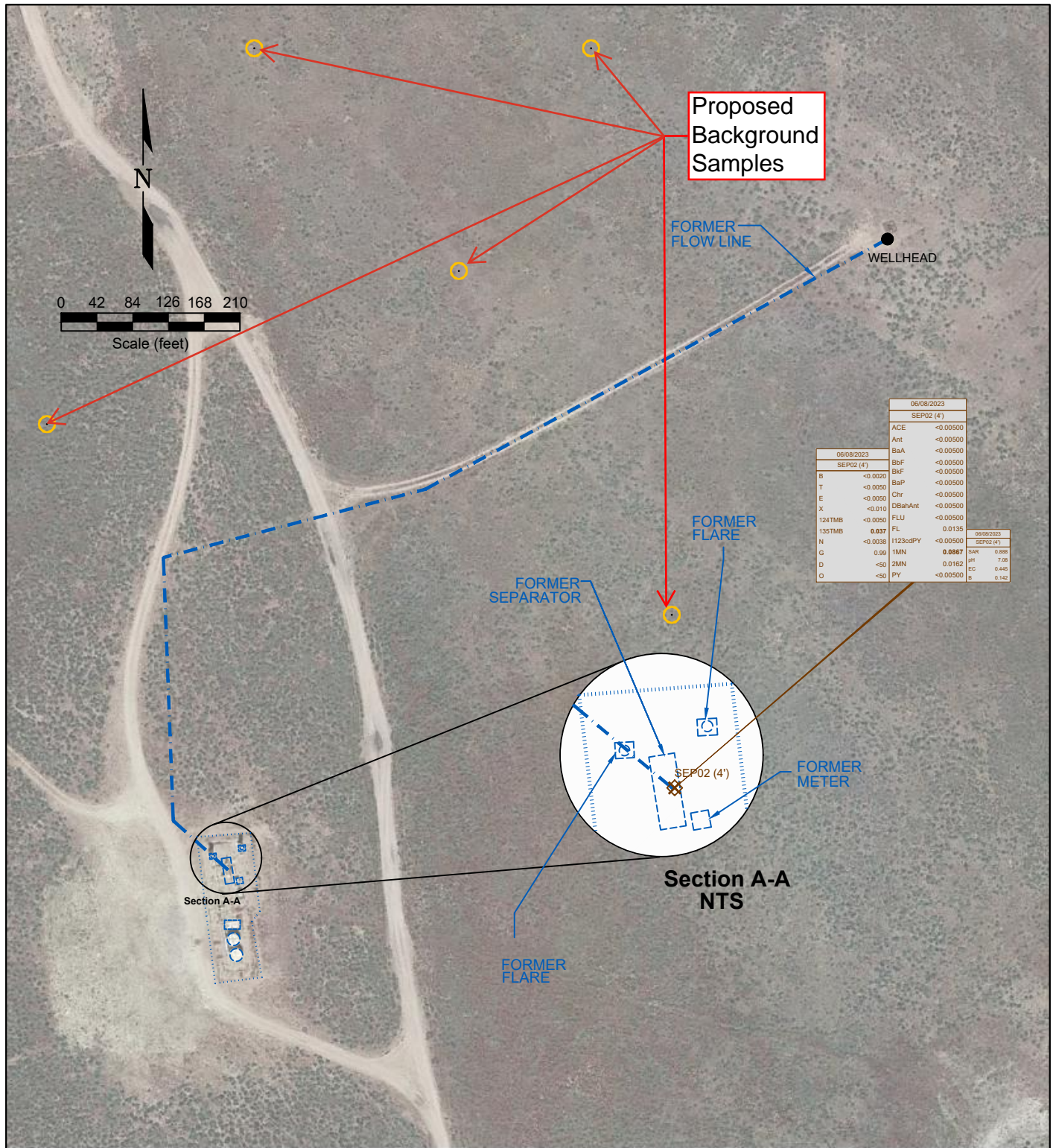
FL01 PID 0.1
PID READING LOCATION IDENTIFICATION
PHOTO IONIZATION DETECTION (ppm)

Figure 2
SITE MAP

NOBLE ENERGY INC - SPIKE STATE CC 30-21
 NESW Sec. 30, T4N, R63W, 6th PM
 Weld County, Colorado
 40.282399°, -104.481537°

Project # CO23-160	API # 05-123-25432	Facility #
Date 09/2/2023	Remediation # 26815	Filename 23160Q





LEGEND

- WELLHEAD LOCATION
- ABOVE GROUND STORAGE TANK
- FORMER FACILITY
- FLOW LINE
- CONTAINMENT BERM

4/7/2023	DATE SAMPLED	4/7/2023	DATE SAMPLED	4/7/2023	DATE SAMPLED
FL01 (4')	SAMPLE ID and DEPTH (ft)	FL01 (4')	SAMPLE ID and DEPTH (ft)	FL01 (4')	SAMPLE ID and DEPTH (ft)
ACE	ACENAPHTHENE (mg/kg)	B	BENZENE (mg/kg)	SAF	SAF (mg/kg)
Ant	ANTHRACENE (mg/kg)	T	TOLUENE (mg/kg)	pH	pH (units)
BaA	BENZO (A) ANTHRACENE (mg/kg)	E	ETHYLBENZENE (mg/kg)	EC	EC (mmhos/cm)
BaP	BENZO (B) FLUORANTHENE (mg/kg)	X	TOTAL XYLENES (mg/kg)	BORON	BORON (mg/L)
BaP	BENZO (K) FLUORANTHENE (mg/kg)	134TMB	1,2,4-TRIMETHYLBENZENE (mg/kg)		
Chr	BENZO (A) PYRENE (mg/kg)	135TMB	1,3,5-TRIMETHYLBENZENE (mg/kg)		
DBahAnt	DIBENZO (A,H) ANTHRACENE (mg/kg)	N	NAPHTHALENE (mg/kg)		
FLU	FLUORANTHENE (mg/kg)	G	TPH-GRO (mg/kg)		
FL	FLUORENE (mg/kg)	D	TPH-DRO (mg/kg)		
1123cdPY	INDENO (1,2,3-CD) PYRENE (mg/kg)	O	TPH-CRO (mg/kg)		
1MN	1-METHYLNAPHTHALENE (mg/kg)				
2MN	2-METHYLNAPHTHALENE (mg/kg)				
PY	PYRENE (mg/kg)				

Figure 3
SOIL CHEMISTRY MAP

NOBLE ENERGY INC - SPIKE STATE CC 30-21
 NESW Sec. 30, T4N, R63W, 6th PM
 Weld County, Colorado
 40.282399°, -104.481537°

Project #	API #	Facility #	
CO23-160	05-123-25432		
Date	Remediation #	Filename	
09/2/2023	26815	23160Q	