

Kiyota 3-35

SWSW Sec. 35-T3N-R67W

API #: 123-15404

Facility ID: 478461

Remediation Project #: 35532

Form 19 Data Package

August through November 2024



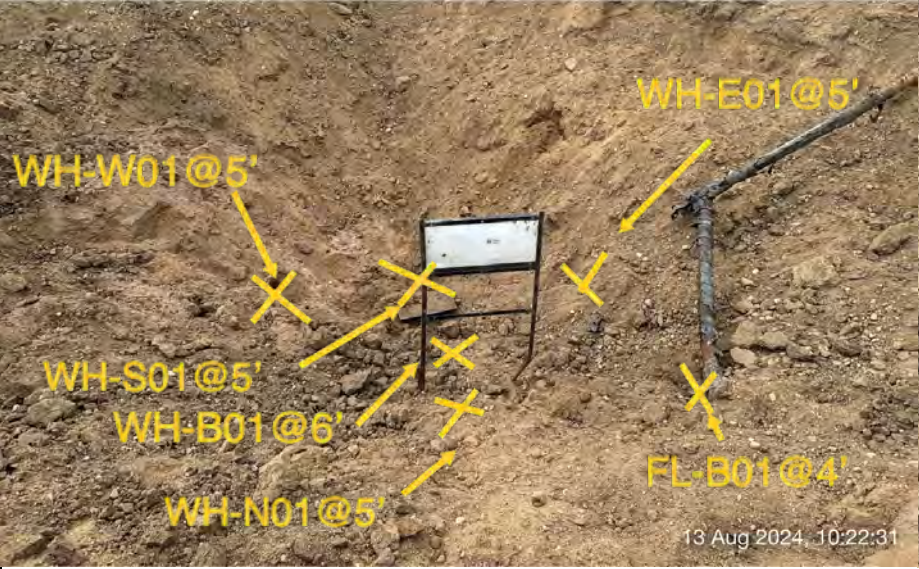

Prepared by Tasman, Inc.



On behalf of Crestone Peak Resources Operating, LLC



PHOTO LOG

							
							
Equipment ID:		Equipment Type:		Equipment ID:		Equipment Type:	
Material:	Volume:	Contents:		Material:	Volume:	Contents:	
Notes/Conditions: Soil sampling and screening locations.				Notes/Conditions: Soil screening location.			

							
Equipment ID:		Equipment Type:		Equipment ID:		Equipment Type:	
Material:		Volume:		Material:		Volume:	
Contents:				Contents:			
Notes/Conditions: Soil screening location.				Notes/Conditions: Soil screening location.			




							
Equipment ID:		Equipment Type:		Equipment ID:		Equipment Type:	
Material:	Volume:	Contents:		Material:	Volume:	Contents:	
Notes/Conditions: Soil screening location.				Notes/Conditions: Soil screening location.			

							
Equipment ID:		Equipment Type:		Equipment ID:		Equipment Type:	
Material:	Volume:	Contents:		Material:	Volume:	Contents:	
Notes/Conditions: Soil screening location.				Notes/Conditions: Soil screening location.			


 <p> ☉ 100°E (T) ☉ 40°10'49"N, 104°51'15"W ±16ft ▲ 4826ft </p> <p>22 Aug 2024 11:31:10</p>			 <p> ☉ 118°SE (T) ☉ 40°10'49"N, 104°51'15"W ±16ft ▲ 4825ft </p> <p>22 Aug 2024 11:36:04</p>				
Equipment ID:		Equipment Type:		Equipment ID:		Equipment Type:	
Material:	Volume:	Contents:		Material:	Volume:	Contents:	
Notes/Conditions: Soil screening location.				Notes/Conditions: Soil sampling location.			

					
<p>☉ 285°W (T) ● 40°10'49"N, 104°51'15"W ±16ft ▲ 4826ft</p>			<p>☉ 344°N (T) ● 40°10'49"N, 104°51'15"W ±16ft ▲ 4825ft</p>		
 <p style="text-align: center;">FL-B11@4' X</p> <p style="text-align: right;">22 Aug 2024, 11:40:52</p>			 <p style="text-align: center;">35, #4-35 FL-B11@4' X</p> <p style="text-align: right;">22 Aug 2024, 12:23:19</p>		
Equipment ID:		Equipment Type:	Equipment ID:		Equipment Type:
Material:	Volume:	Contents:	Material:	Volume:	Contents:
Notes/Conditions: Soil screening location.			Notes/Conditions: Soil sampling location.		

			
<p> 40°NE (T) ● 40°10'44"N, 104°51'14"W ±16ft ▲ 4827ft 188°S (T) ● 40°10'44"N, 104°51'13"W ±16ft ▲ 4827ft </p>			
 <p style="text-align: center; color: yellow; font-weight: bold;">X BG01@4' & 6'</p> <p style="text-align: center; font-size: small;">17 Sep 2024 09:24:23</p>	 <p style="text-align: center; color: yellow; font-weight: bold;">X BG02@4' & 6'</p> <p style="text-align: center; font-size: small;">17 Sep 2024 09:24:42</p>		
Equipment ID:	Equipment Type:	Equipment ID:	Equipment Type:
Material:	Volume:	Contents:	Material:
			Volume:
			Contents:
Notes/Conditions: Background Soil Sample Location		Notes/Conditions: Background Soil Sample Location	

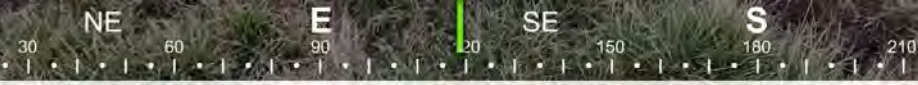
			
 <p style="text-align: center; color: yellow; font-weight: bold;">X BG03@4' x 6"</p> <p style="text-align: center; font-size: small;">17 Sep 2024 09:26:30</p>	 <p style="text-align: center; color: yellow; font-weight: bold;">X BG04@4' x 6"</p> <p style="text-align: center; font-size: small;">17 Sep 2024 09:27:10</p>		
Equipment ID:	Equipment Type:	Equipment ID:	Equipment Type:
Material:	Volume:	Contents:	Material:
			Volume:
			Contents:
Notes/Conditions: Background Soil Sample Location		Notes/Conditions: Background Soil Sample Location	


					
					
Equipment ID:		Equipment Type:	Equipment ID:		Equipment Type:
Material:	Volume:	Contents:	Material:	Volume:	Contents:
Notes/Conditions: Background Soil Sample Location			Notes/Conditions: Background Soil Sample Lithology		

							
Equipment ID:		Equipment Type:		Equipment ID:		Equipment Type:	
Material:		Volume:		Material:		Volume:	
Contents:				Contents:			
Notes/Conditions: Background Soil Sample Lithology				Notes/Conditions: Soil Sample Locations			

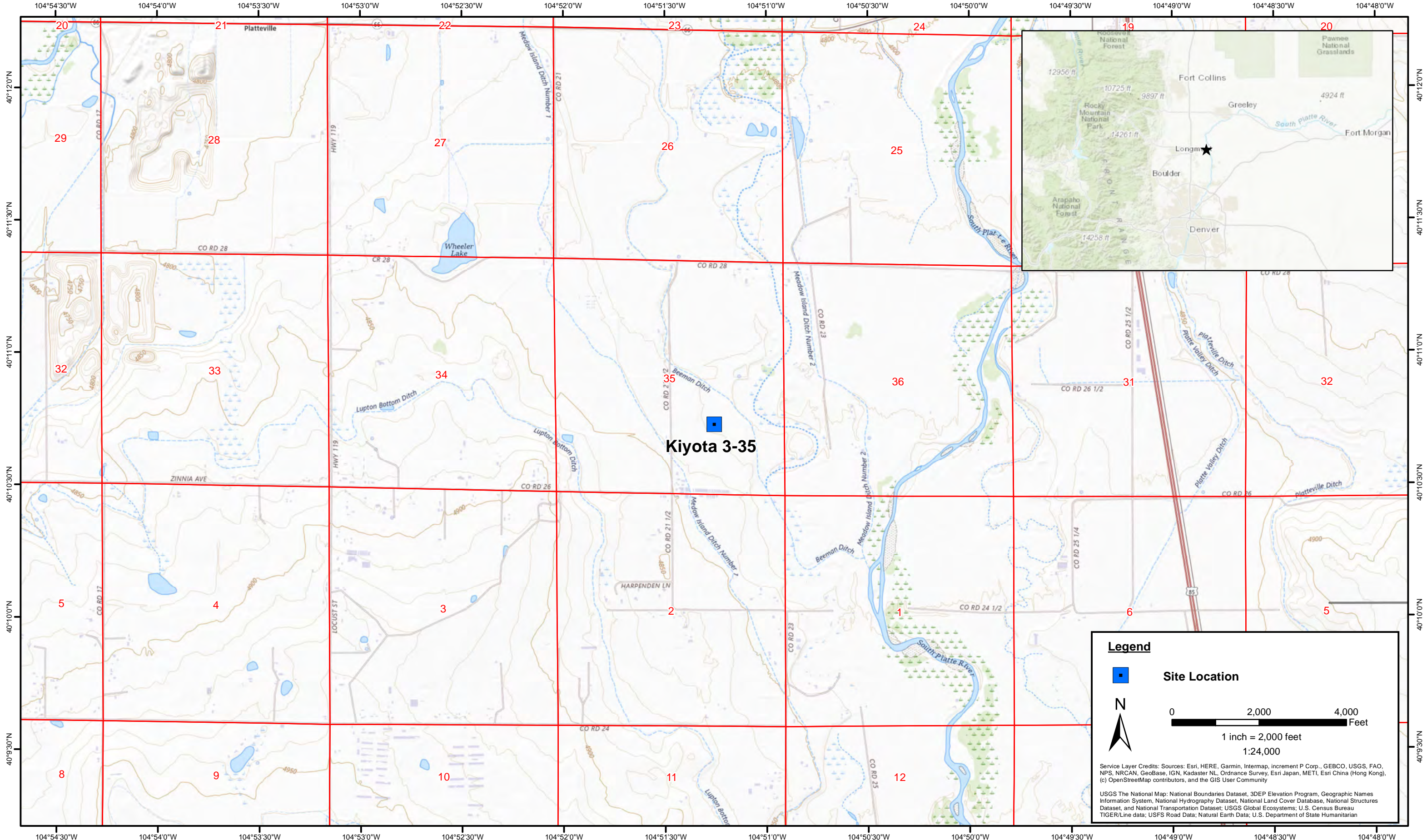
							
46°NE (T) ● 40°10'46"N, 104°51'16"W ±16ft ▲ 4825ft			199°S (T) ● 40°10'45"N, 104°51'16"W ±16ft ▲ 4825ft				
							
05 Nov 2024 15:57:21			05 Nov 2024 15:58:31				
Equipment ID:		Equipment Type:		Equipment ID:		Equipment Type:	
Material:		Volume:		Material:		Volume:	
Contents:				Contents:			
Notes/Conditions: Background Soil Sample Location				Notes/Conditions: Background Soil Sample Location			

Photographic Log

																																	
161°S (T) ● 40°10'46"N, 104°51'13"W ±16ft ▲ 4825ft	119°SE (T) ● 40°10'44"N, 104°51'13"W ±16ft ▲ 4825ft																																
																																	
05 Nov 2024, 16:01:10	05 Nov 2024, 16:02:41																																
<table border="1" style="width: 100%; border-collapse: collapse;"> <tr> <td style="width: 25%;">Equipment ID:</td> <td style="width: 25%;">Equipment Type:</td> <td style="width: 25%;">Equipment ID:</td> <td style="width: 25%;">Equipment Type:</td> </tr> <tr> <td>Material:</td> <td>Volume:</td> <td>Material:</td> <td>Volume:</td> </tr> <tr> <td colspan="2">Contents:</td> <td colspan="2">Contents:</td> </tr> <tr> <td colspan="2">Notes/Conditions: Background Soil Sample Location</td> <td colspan="2">Notes/Conditions: Background Soil Sample Location</td> </tr> </table>	Equipment ID:	Equipment Type:	Equipment ID:	Equipment Type:	Material:	Volume:	Material:	Volume:	Contents:		Contents:		Notes/Conditions: Background Soil Sample Location		Notes/Conditions: Background Soil Sample Location		<table border="1" style="width: 100%; border-collapse: collapse;"> <tr> <td style="width: 25%;">Equipment ID:</td> <td style="width: 25%;">Equipment Type:</td> <td style="width: 25%;">Equipment ID:</td> <td style="width: 25%;">Equipment Type:</td> </tr> <tr> <td>Material:</td> <td>Volume:</td> <td>Material:</td> <td>Volume:</td> </tr> <tr> <td colspan="2">Contents:</td> <td colspan="2">Contents:</td> </tr> <tr> <td colspan="2">Notes/Conditions: Background Soil Sample Location</td> <td colspan="2">Notes/Conditions: Background Soil Sample Location</td> </tr> </table>	Equipment ID:	Equipment Type:	Equipment ID:	Equipment Type:	Material:	Volume:	Material:	Volume:	Contents:		Contents:		Notes/Conditions: Background Soil Sample Location		Notes/Conditions: Background Soil Sample Location	
Equipment ID:	Equipment Type:	Equipment ID:	Equipment Type:																														
Material:	Volume:	Material:	Volume:																														
Contents:		Contents:																															
Notes/Conditions: Background Soil Sample Location		Notes/Conditions: Background Soil Sample Location																															
Equipment ID:	Equipment Type:	Equipment ID:	Equipment Type:																														
Material:	Volume:	Material:	Volume:																														
Contents:		Contents:																															
Notes/Conditions: Background Soil Sample Location		Notes/Conditions: Background Soil Sample Location																															

							
Equipment ID:		Equipment Type:		Equipment ID:		Equipment Type:	
Material:		Volume:		Material:		Volume:	
Contents:				Contents:			
Notes/Conditions: Background Soil Sample Lithology				Notes/Conditions:			

FIGURES



DATE: August 2024
 DESIGNED BY: S. Vogt
 DRAWN BY: J. Woffinden

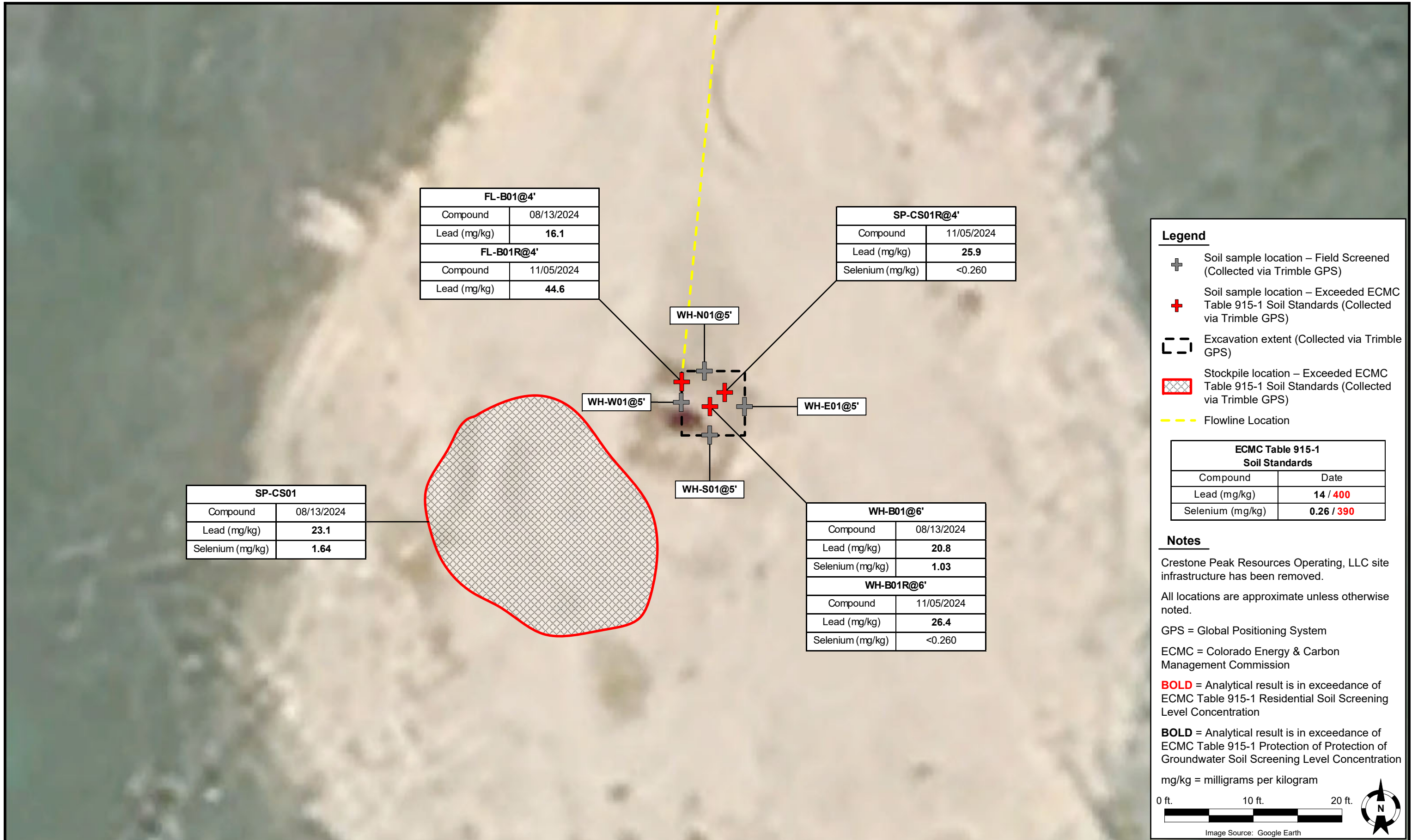


Tasman, Inc.
 6855 W. 119th Ave
 Broomfield, CO 80020

Crestone Peak Resources Operating, LLC
Kiyota 3-35
 NWSE Sec. 35-T3N-R67W
 Weld County, Colorado

Site Location Map

Figure
1



Legend

- ⊕ Soil sample location – Field Screened (Collected via Trimble GPS)
- ⊕ Soil sample location – Exceeded ECMC Table 915-1 Soil Standards (Collected via Trimble GPS)
- ⌚ Excavation extent (Collected via Trimble GPS)
- ▨ Stockpile location – Exceeded ECMC Table 915-1 Soil Standards (Collected via Trimble GPS)
- Flowline Location

Notes

Crestone Peak Resources Operating, LLC site infrastructure has been removed.

All locations are approximate unless otherwise noted.

GPS = Global Positioning System

ECMC = Colorado Energy & Carbon Management Commission

BOLD = Analytical result is in exceedance of ECMC Table 915-1 Residential Soil Screening Level Concentration

BOLD = Analytical result is in exceedance of ECMC Table 915-1 Protection of Protection of Groundwater Soil Screening Level Concentration

mg/kg = milligrams per kilogram

0 ft. 10 ft. 20 ft.

Image Source: Google Earth

DATE: December 9, 2024

DESIGNED BY: S. Vogt

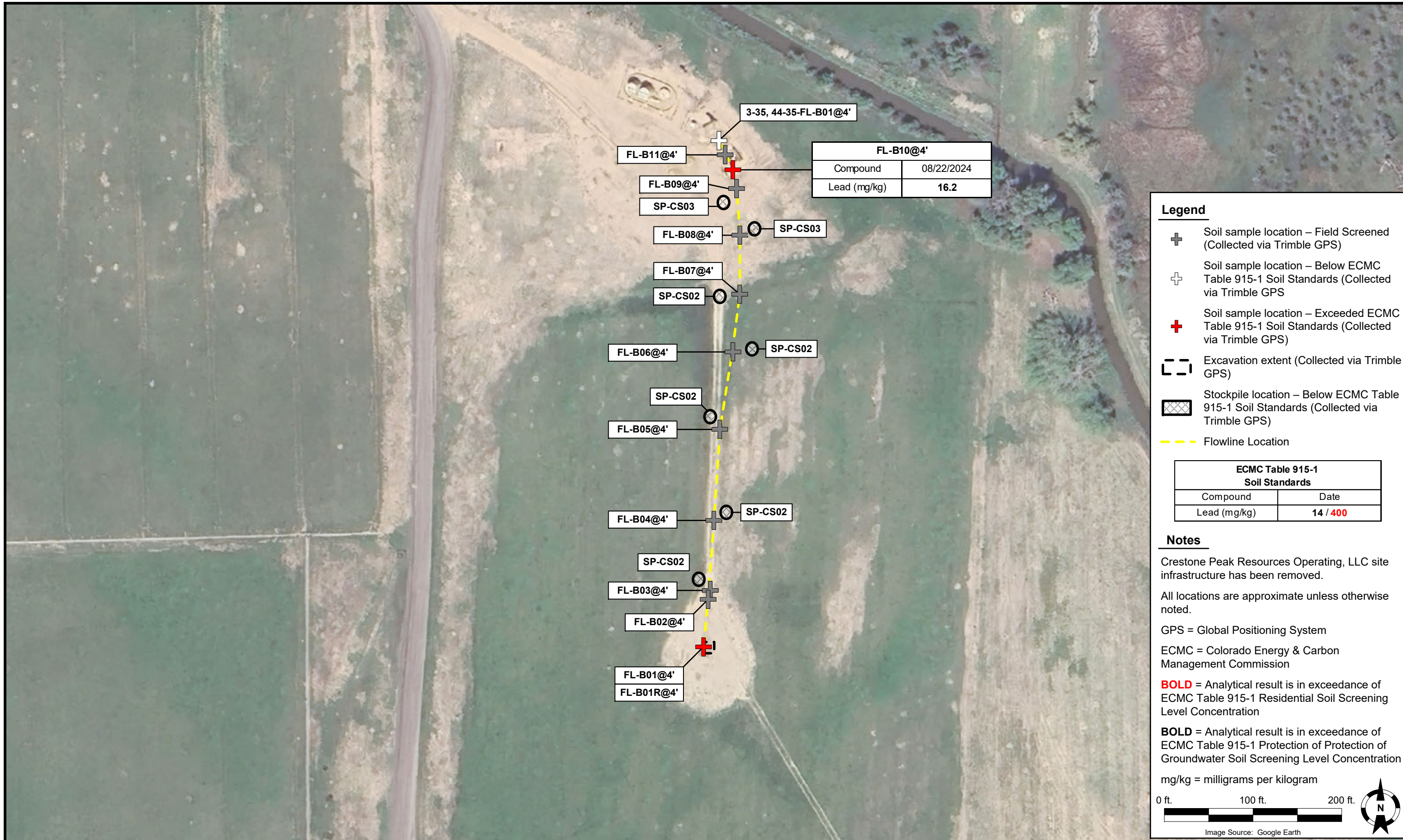
DRAWN BY: L. Molson

Tasman, Inc.
6855 W119th Ave.
Broomfield, CO 80020

Crestone Peak Resources Operating, LLC
Kiyota 3-35
NWSE Sec. 35-T3N-R67W
Weld County, Colorado

Wellhead Soil Sample Location Map
(08/13/2024 & 11/05/2024)

Figure 2



FL-B10@4'	
Compound	08/22/2024
Lead (mg/kg)	16.2

ECMC Table 915-1 Soil Standards	
Compound	Date
Lead (mg/kg)	14 / 400

- Legend**
- Soil sample location – Field Screened (Collected via Trimble GPS)
 - Soil sample location – Below ECMC Table 915-1 Soil Standards (Collected via Trimble GPS)
 - Soil sample location – Exceeded ECMC Table 915-1 Soil Standards (Collected via Trimble GPS)
 - Excavation extent (Collected via Trimble GPS)
 - Stockpile location – Below ECMC Table 915-1 Soil Standards (Collected via Trimble GPS)
 - Flowline Location

Notes

Crestone Peak Resources Operating, LLC site infrastructure has been removed.

All locations are approximate unless otherwise noted.

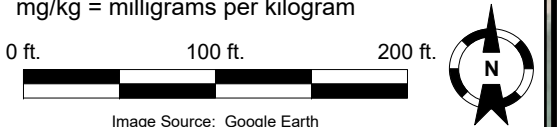
GPS = Global Positioning System

ECMC = Colorado Energy & Carbon Management Commission

BOLD = Analytical result is in exceedance of ECMC Table 915-1 Residential Soil Screening Level Concentration

BOLD = Analytical result is in exceedance of ECMC Table 915-1 Protection of Protection of Groundwater Soil Screening Level Concentration

mg/kg = milligrams per kilogram



DATE: December 9, 2024

DESIGNED BY: S. Vogt

DRAWN BY: L. Molson

Tasman, Inc.
6855 W119th Ave.
Broomfield, CO 80020

Crestone Peak Resources Operating, LLC
Kiyota 3-35
NWSE Sec. 35-T3N-R67W
Weld County, Colorado

Flowline Soil Sample
Location Map
(08/13/2024 – 11/05/2024)

Figure
3



Legend

- Background soil sample location (Collected via Trimble GPS)
- Excavation extent (Collected via Trimble GPS)
- Flowline Location

Notes


Crestone Peak Resources Operating, LLC site infrastructure has been removed.

All locations are approximate unless otherwise noted.


GPS = Global Positioning System

0 ft. 100 ft. 200 ft.

Image Source: Google Earth



DATE:	December 9, 2024
DESIGNED BY:	S. Vogt
DRAWN BY:	L. Molson



Tasman, Inc.
 6855 W119th Ave.
 Broomfield, CO 80020

Crestone Peak Resources Operating, LLC
 Kiyota 3-35
 NWSE Sec. 35-T3N-R67W
 Weld County, Colorado

Background Soil Sample
 Location Map
 (09/17/2024 & 11/05/2024)

Figure
 4

TABLES

**TABLE 1
KIYOTA 3-35**



**SOIL SAMPLE LOCATIONS
CRESTONE PEAK RESOURCES OPERATING, LLC**

Soil Sample Location	Depth	Date	PID Reading (ppm)	Latitude	Longitude	GPS PDOP Value	Lab (Y/N)
WH-B01@6'	6'	08/13/2024	4.7	40.178913	-104.854291	1.2	Y
WH-N01@5'	5'	08/13/2024	2.4	40.178928	-104.854293	1.4	N
WH-S01@5'	5'	08/13/2024	3.6	40.178910	-104.854290	1.4	N
WH-E01@5'	5'	08/13/2024	2.6	40.178917	-104.854277	1.4	N
WH-W01@5'	5'	08/13/2024	1.4	40.178919	-104.854303	1.4	N
SP-CS01	-	08/13/2024	1.9	40.178858	-104.854314	1.9	Y
FL-B01@4'	4'	08/13/2024	1.7	40.178932	-104.854303	1.3	Y
FL-B02@4'	4'	08/13/2024	1.4	40.179076	-104.854285	1.6	N
FL-B03@4'	4'	08/22/2024	0.0	40.179099	-104.854289	1.1	N
FL-B04@4'	4'	08/22/2024	0.0	40.179322	-104.854262	0.9	N
FL-B05@4'	4'	08/22/2024	0.0	40.179600	-104.854240	0.8	N
FL-B06@4'	4'	08/22/2024	0.1	40.179842	-104.854187	1	N
FL-B07@4'	4'	08/22/2024	0.0	40.180017	-104.854156	0.8	N
SP-CS02	-	08/22/2024	0.0	40.180020	-104.854239	0.9	Y
FL-B08@4'	4'	08/22/2024	0.4	40.180203	-104.854157	0.9	N
FL-B09@4'	4'	08/22/2024	0.1	40.180348	-104.854174	0.8	N
FL-B10@4'	4'	08/22/2024	0.1	40.180405	-104.854186	0.8	Y
FL-B11@4'	4'	08/22/2024	0.1	40.180450	-104.854214	1	N
SP-CS03	-	08/22/2024	0.2	40.180219	-104.854111	0.8	Y
3-35,44-35-FL-B01@4'	4'	08/22/2024	0.6	40.180496	-104.854241	0.9	Y
SP-CS01R@4'	4'	11/05/2024	0.8	40.178915	-104.854291	0.8	Y
WH-B01R@6'	6'	11/05/2024	0.6	40.178915	-104.854291	0.8	Y
FL-B01R@4'	4'	11/05/2024	1.1	40.178934	-104.854302	0.8	Y
BACKGROUND							
BG01@4'	4'	09/17/2024	0.9	40.179081	-104.853937	1.6	Y
BG01@6'	6'	09/17/2024	0.4	40.179081	-104.853937	1.6	Y
BG02@4'	4'	09/17/2024	1.8	40.178907	-104.853838	1.1	Y
BG02@6'	6'	09/17/2024	1.2	40.178907	-104.853838	1.1	Y
BG03@4'	4'	09/17/2024	1.1	40.178471	-104.854370	1.2	Y
BG03@6'	6'	09/17/2024	0.3	40.178471	-104.854370	1.2	Y
BG04@4'	4'	09/17/2024	0.8	40.178770	-104.854763	1.3	Y
BG04@6'	6'	09/17/2024	0.3	40.178770	-104.854763	1.3	Y
BG05@4'	4'	09/17/2024	1.4	40.179110	-104.854688	1.2	Y
BG05@6'	6'	09/17/2024	1.0	40.179110	-104.854688	1.2	Y
BG06@4'	4'	11/05/2024	0.0	40.179571	-104.854466	0.8	Y
BG06@6'	6'	11/05/2024	0.3	40.179571	-104.854466	0.8	Y
BG07@4'	4'	11/05/2024	0.8	40.179339	-104.854456	0.7	Y

TABLE 1
KIYOTA 3-35



SOIL SAMPLE LOCATIONS
CRESTONE PEAK RESOURCES OPERATING, LLC

Soil Sample Location	Depth	Date	PID Reading (ppm)	Latitude	Longitude	GPS PDOP Value	Lab (Y/N)
BG07@6'	6'	11/05/2024	0.4	40.179339	-104.854456	0.7	Y
BG08@4'	4'	11/05/2024	0.4	40.179518	-104.853782	0.8	Y
BG08@6'	6'	11/05/2024	0.5	40.179518	-104.853782	0.8	Y
BG09@4'	4'	11/05/2024	1.0	40.179127	-104.853838	1	Y
BG09@6'	6'	11/05/2024	0.7	40.179127	-104.853838	1	Y

Notes:

PID = Photoionization Detector

ppm = parts per million

GPS = Global Positioning System

PDOP = Position Dilution of Precision

- = Not Applicable

TABLE 2
KIYOTA 3-35
SOIL ANALYTICAL DATA - VOCs
CRESTONE PEAK RESOURCES OPERATING, LLC

Soil Sample Location	Depth	Date	Benzene (mg/kg)	Toluene (mg/kg)	Ethylbenzene (mg/kg)	Total Xylenes (mg/kg)	Naphthalene (mg/kg)	TVPH-GRO (mg/kg)	TEPH-DRO (mg/kg)	TEPH-ORO (mg/kg)	1,2,4-TMB (mg/kg)	1,3,5-TMB (mg/kg)
ECMC Organic Compounds in Soils - GSSL ⁽¹⁾			0.0026	0.69	0.78	9.9	0.0038	500			0.0081	0.0087
ECMC Organic Compounds in Soils - RSL ⁽²⁾			1.2	490	5.8	58	2	500			30	27
WH-B01@6'	6'	08/13/2024	<0.00200	<0.00500	<0.00500	<0.0100	<0.00408	<0.500	<50	<50	<0.00500	<0.00500
SP-CS01	-	08/13/2024	<0.00200	<0.00500	<0.00500	<0.0100	<0.00408	<0.500	<50	<50	<0.00500	<0.00500
FL-B01@4'	4'	08/13/2024	<0.00200	<0.00500	<0.00500	<0.0100	<0.00408	<0.500	<50	<50	<0.00500	<0.00500
SP-CS02	-	08/22/2024	<0.00200	<0.00500	<0.00500	<0.0100	<0.00408	<0.500	<50	<50	<0.00500	<0.00500
FL-B10@4'	4'	08/22/2024	<0.00200	<0.00500	<0.00500	<0.0100	<0.00408	<0.500	<50	<50	<0.00500	<0.00500
SP-CS03	-	08/22/2024	<0.00200	<0.00500	<0.00500	<0.0100	<0.00408	<0.500	<50	<50	<0.00500	<0.00500
3-35,44-35-FL-B01@4'	4'	08/22/2024	<0.00200	<0.00500	<0.00500	<0.0100	<0.00408	<0.500	<50	<50	<0.00500	<0.00500

Notes:

VOCs = Volatile Organic Compounds

(1) Standards for soil are taken from ECMC Table 915-1: Organic Compounds in Soils - Protection of Groundwater Soil Screening Level Concentrations (Effective January 15, 2021)

(2) Standards for soil are taken from ECMC Table 915-1: Organic Compounds in Soils - Residential Soil Screening Level Concentrations (Effective January 15, 2021)

ECMC = Colorado Energy & Carbon Management Commission

GSSL = Protection of Groundwater Screening Level

RSL = Residential Soil Screening Level

(<) = Analytical result is less than the indicated laboratory reporting limit

mg/kg = milligrams per kilogram

TVPH - GRO = Total Volatile Petroleum Hydrocarbons - Gasoline Range Organics

TEPH - DRO = Total Extractable Petroleum Hydrocarbons - Diesel Range Organics

TEPH - ORO = Total Extractable Petroleum Hydrocarbons - Oil Range Organics

1,2,4 - TMB = 1,2,4 - Trimethylbenzene

1,3,5 - TMB = 1,3,5 - Trimethylbenzene

BOLD = Analytical result is in exceedance of ECMC Table 915-1: Organic Compounds in Soils - Protection of Groundwater Soil Screening Level Concentrations

BOLD = Analytical result is in exceedance of ECMC Table 915-1: Organic Compounds in Soils - Residential Soil Screening Level Concentrations

Italics = Laboratory minimum detection limit exceeds the ECMC Table 915-1 standard

TABLE 3
KIYOTA 3-35
SOIL ANALYTICAL DATA - PAHs
CRESTONE PEAK RESOURCES OPERATING, LLC

Soil Sample Location	Depth	Date	Acenaphthene (mg/kg)	Anthracene (mg/kg)	Benzo(a)A (mg/kg)	Benzo(b)F (mg/kg)	Benzo(k)F (mg/kg)	Benzo(a)P (mg/kg)	Chrysene (mg/kg)	D (a,h) A (mg/kg)	Fluoranthene (mg/kg)	Fluorene (mg/kg)	1,2,3-CD (mg/kg)	1-M (mg/kg)	2-M (mg/kg)	Pyrene (mg/kg)
ECMC Organic Compounds in Soils - GSSL ⁽¹⁾			0.55	5.8	0.011	0.3	2.9	0.24	9	0.96	8.9	0.54	0.98	0.006	0.019	1.3
ECMC Organic Compounds in Soils - RSL ⁽²⁾			360	1,800	1.1	1.1	11	0.11	110	0.11	240	240	1.1	18	24	180
WH-B01@6'	6'	08/13/2024	<0.00500	<0.00500	<0.00500	<0.00500	<0.00500	<0.00500	<0.00500	<0.00500	<0.00500	<0.00500	<0.00500	<0.00500	<0.00500	<0.00500
SP-CS01	-	08/13/2024	<0.00500	<0.00500	<0.00500	<0.00500	<0.00500	<0.00500	<0.00500	<0.00500	<0.00500	<0.00500	<0.00500	<0.00500	<0.00500	<0.00500
FL-B01@4'	4'	08/13/2024	<0.00500	<0.00500	<0.00500	<0.00500	<0.00500	<0.00500	<0.00500	<0.00500	<0.00500	<0.00500	<0.00500	<0.00500	<0.00500	<0.00500
SP-CS02	-	08/22/2024	<0.00500	<0.00500	<0.00500	<0.00500	<0.00500	<0.00500	<0.00500	<0.00500	<0.00500	<0.00500	<0.00500	<0.00500	<0.00500	<0.00500
FL-B10@4'	4'	08/22/2024	<0.00500	<0.00500	<0.00500	<0.00500	<0.00500	<0.00500	<0.00500	<0.00500	<0.00500	<0.00500	<0.00500	<0.00500	<0.00500	<0.00500
SP-CS03	-	08/22/2024	<0.00500	<0.00500	<0.00500	<0.00500	<0.00500	<0.00500	<0.00500	<0.00500	<0.00500	<0.00500	<0.00500	<0.00500	<0.00500	<0.00500
3-35,44-35-FL-B01@4'	4'	08/22/2024	<0.00500	<0.00500	<0.00500	<0.00500	<0.00500	<0.00500	<0.00500	<0.00500	<0.00500	<0.00500	<0.00500	<0.00500	<0.00500	<0.00500

Notes:

PAHs = Polycyclic Aromatic Hydrocarbons

(1) Standards for soil are taken from ECMC Table 915-1: Organic Compounds in Soils - Protection of Groundwater Soil Screening Level Concentrations (Effective January 15, 2021)

(2) Standards for soil are taken from ECMC Table 915-1: Organic Compounds in Soils - Residential Soil Screening Level Concentrations (Effective January 15, 2021)

ECMC = Colorado Energy & Carbon Management Commission

GSSL = Protection of Groundwater Screening Level

RSL = Residential Soil Screening Level

(<) = Analytical result is less than the indicated laboratory reporting limit

mg/kg = milligrams per kilogram

Benzo(a)A = Benzo(a)Anthracene

Benzo(b)F = Benzo(b)Fluoranthene

Benzo(k)F = Benzo(k)Fluoranthene

Benzo(a)P = Benzo(a)Pyrene

D (a,h) A = Dibenz(a,h)Anthracene

1,2,3-CD = Indeno(1,2,3-cd)Pyrene

1-M = 1-Methylnaphthalene

2-M = 2-Methylnaphthalene

BOLD = Analytical result is in exceedance of ECMC Table 915-1: Organic Compounds in Soils - Protection of Groundwater Soil Screening Level Concentrations

BOLD = Analytical result is in exceedance of ECMC Table 915-1: Organic Compounds in Soils - Residential Soil Screening Level Concentrations

TABLE 4
KIYOTA 3-35



SOIL ANALYTICAL DATA - METALS
CRESTONE PEAK RESOURCES OPERATING, LLC

Soil Sample Location	Depth	Date	Arsenic (mg/kg)	Barium (mg/kg)	Cadmium (mg/kg)	Chromium (VI) (mg/kg)	Copper (mg/kg)	Lead (mg/kg)	Nickel (mg/kg)	Selenium (mg/kg)	Silver (mg/kg)	Zinc (mg/kg)	Confirmation/Resample for Sample Location(s) ⁽³⁾
ECMC Metals in Soils - GSSL ⁽¹⁾			0.29	82	0.38	0.00067	46	14	26	0.26	0.8	370	-
ECMC Metals in Soils - RSL ⁽²⁾			0.68	15,000	71	0.3	3,100	400	1,500	390	390	23,000	-
WH-B01@6'	6'	08/13/2024	2.24*	96.3*	0.243	<0.300	11.4	20.8	7.35	1.03	0.202	61.1	-
SP-CS01	-	08/13/2024	2.03*	144*	<0.200	<0.300	7.18	23.1	5.50	1.64	<0.127	39.0	-
FL-B01@4'	4'	08/13/2024	1.49*	84.6*	<0.200	<0.300	11.2	16.1	6.56	0.421*	<0.127	34.3	-
SP-CS02	-	08/22/2024	1.43*	166*	0.204	<0.300	11.0	12.9	8.04	0.896*	<0.200	42.7	-
FL-B10@4'	4'	08/22/2024	1.16*	91.2*	0.229	<0.300	16.7	16.2	7.10	0.508*	<0.200	49.6	-
SP-CS03	-	08/22/2024	0.746*	70.3	0.205	<0.300	8.18	9.49	5.57	0.440*	<0.200	34.1	-
3-35,44-35-FL-B01@4'	4'	08/22/2024	0.892*	53.5	<0.200	<0.300	4.33	5.54	4.95	<0.260	<0.200	21.4	-
SP-CS01R@4'	4'	11/05/2024	-	117*	-	-	-	25.9	-	<0.260	-	-	WH-B01@6'
WH-B01R@6'	6'	11/05/2024	-	128*	-	-	-	26.4	-	<0.260	-	-	SP-CS01
FL-B01R@4'	4'	11/05/2024	-	-	-	-	-	44.6	-	-	-	-	FL-B01@4'
BACKGROUND													-
BG01@4'	4'	09/17/2024	2.21	73.7	<0.200	<0.300	7.07	7.38	6.16	0.793	<0.0865	35.7	-
BG02@4'	4'	09/17/2024	0.593	16.2	<0.200	<0.300	1.77	2.35	1.49	0.281	<0.0865	9.51	-
BG03@4'	4'	09/17/2024	0.307	12.5	<0.200	<0.300	1.12	1.74	0.904	0.325	<0.0865	7.05	-
BG04@4'	4'	09/17/2024	1.36	61.6	<0.200	<0.300	4.21	4.74	3.69	0.463	<0.0865	20.4	-
BG05@4'	4'	09/17/2024	0.636	21.4	<0.200	<0.300	2.54	2.00	1.15	0.316	<0.0865	8.67	-
BG06@4'	4'	11/05/2024	1.56	64.8	0.211	<0.30	3.78	6.63	2.84	<0.260	0.0413	18.5	-
BG07@4'	4'	11/05/2024	2.90	120	0.390	<0.30	6.31	12.0	4.37	<0.260	0.105	27.9	-
BG08@4'	4'	11/05/2024	0.529	20.4	<0.200	<0.30	1.37	2.52	1.34	<0.260	<0.0200	8.69	-
BG01@6'	6'	09/17/2024	0.729	32.1	<0.200	<0.300	1.91	1.81	1.80	0.366	<0.0865	8.15	-
BG02@6'	6'	09/17/2024	0.436	15.5	<0.200	<0.300	1.88	2.06	1.46	0.357	<0.0865	10.4	-
BG03@6'	6'	09/17/2024	0.554	29.6	<0.200	<0.300	2.72	2.14	1.76	0.411	<0.0865	10.7	-
BG04@6'	6'	09/17/2024	1.05	37.8	<0.200	<0.300	2.99	3.18	2.41	0.578	<0.0865	13.3	-
BG05@6'	6'	09/17/2024	0.877	17.9	<0.200	<0.300	1.60	2.60	1.30	0.707	<0.0865	9.30	-
BG06@6'	6'	11/05/2024	0.956	24.9	<0.200	<0.30	1.01	1.63	1.14	<0.260	<0.0200	6.55	-
BG07@6'	6'	11/05/2024	0.652	13.0	<0.200	<0.30	1.04	1.97	1.12	<0.260	<0.0200	7.34	-
BG08@6'	6'	11/05/2024	0.502	17.8	<0.200	<0.30	1.17	2.46	1.25	<0.260	<0.0200	7.76	-

TABLE 4
KIYOTA 3-35
SOIL ANALYTICAL DATA - METALS
CRESTONE PEAK RESOURCES OPERATING, LLC

Soil Sample Location	Depth	Date	Arsenic (mg/kg)	Barium (mg/kg)	Cadmium (mg/kg)	Chromium (VI) (mg/kg)	Copper (mg/kg)	Lead (mg/kg)	Nickel (mg/kg)	Selenium (mg/kg)	Silver (mg/kg)	Zinc (mg/kg)	Confirmation/Resample for Sample Location(s) ⁽³⁾
ECMC Metals in Soils - GSSL ⁽¹⁾			0.29	82	0.38	0.00067	46	14	26	0.26	0.8	370	-
ECMC Metals in Soils - RSL ⁽²⁾			0.68	15,000	71	0.3	3,100	400	1,500	390	390	23,000	-
Highest Background @ 0 - 6' x1.25 (SW)			3.63	150	0.488	-	8.84	15.0	7.70	0.991	0.131	44.6	-
BG09@4'	4'	11/05/2024	3.20	165	0.314	<0.30	5.82	10.0	5.06	<0.260	0.0571	25.6	-
BG09@6'	6'	11/05/2024	4.24	201	0.311	<0.30	6.74	11.0	5.99	<0.260	0.0607	28.0	-
Highest Background @ 0 - 6' x1.25 (CL)			5.30	251	0.393	-	8.43	13.8	7.49	-	0.0759	35.0	-

Notes:

(1) Standards for soil are taken from ECMC Table 915-1: Metals in Soils - Protection of Groundwater Soil Screening Level Concentrations (Effective January 15, 2021)

(2) Standards for soil are taken from ECMC Table 915-1: Metals in Soils - Residential Soil Screening Level Concentrations (Effective January 15, 2021)

(3) List sample location that exceeded ECMC Table 915-1 Standards that the confirmation/resample sample represents. Sample location resampled to confirm heterogeneous lithology or lab variability.

ECMC = Colorado Energy & Carbon Management Commission

GSSL = Protection of Groundwater Screening Level

RSL = Residential Soil Screening Level

(<) = Analytical result is less than the indicated laboratory minimum detection limit

mg/kg = milligrams per kilogram

BOLD = Analytical result is in exceedance of ECMC Table 915-1: Metals in Soils - Protection of Groundwater Soil Screening Level Concentrations

BOLD = Analytical result is in exceedance of ECMC Table 915-1: Metals in Soils - Residential Soil Screening Level Concentrations

Highest background concentration x1.25

Italics = Laboratory minimum detection limit exceeds the ECMC Table 915-1 Standard

* Result exceeded the ECMC Table 915-1 standard, but was within site-specific 1.25x background multiplier levels

- = Constituent not analyzed

TABLE 5
KIYOTA 3-35



SOIL ANALYTICAL DATA - SOIL RECLAMATION
CRESTONE PEAK RESOURCES OPERATING, LLC

Soil Sample Location	Depth	Date	pH	SAR	EC (mmhos/cm)	Boron (mg/L)
ECMC Soil Suitability for Reclamation⁽¹⁾			6 - 8.3	< 6	< 4	2
WH-B01@6'	6'	08/13/2024	7.98	0.753	0.428	<2.00
SP-CS01	-	08/13/2024	7.97	1.84	0.430	<2.00
FL-B01@4'	4'	08/13/2024	7.77	0.799	0.510	<2.00
SP-CS02	-	08/22/2024	7.88	2.60	0.932	<2.00
FL-B10@4'	4'	08/22/2024	8.03	2.33	0.356	<2.00
SP-CS03	-	08/22/2024	7.83	0.608	0.590	<2.00
3-35,44-35-FL-B01@4'	4'	08/22/2024	7.93	1.66	0.523	<2.00
BACKGROUND						
BG01@4'	4'	09/17/2024	7.97	5.40	2.46	<2.00
BG02@4'	4'	09/17/2024	8.14	4.59	0.511	<2.00
BG03@4'	4'	09/17/2024	8.07	6.13	0.636	<2.00
BG04@4'	4'	09/17/2024	8.18	8.84	1.14	<2.00
BG05@4'	4'	09/17/2024	8.01	5.10	0.220	<2.00
BG06@4'	4'	11/05/2024	8.49	1.78	0.948	<2.00
BG07@4'	4'	11/05/2024	8.52	0.470	0.0896	<2.00
BG08@4'	4'	11/05/2024	9.39	0.759	0.415	<2.00
BG01@6'	6'	09/17/2024	7.95	2.53	0.902	<2.00
BG02@6'	6'	09/17/2024	8.03	4.19	3.83	<2.00
BG03@6'	6'	09/17/2024	8.64	2.17	0.267	<2.00
BG04@6'	6'	09/17/2024	7.81	3.30	0.367	<2.00
BG05@6'	6'	09/17/2024	7.86	3.73	0.674	<2.00
BG06@6'	6'	11/05/2024	8.17	1.20	1.50	<2.00
BG07@6'	6'	11/05/2024	8.96	0.538	0.140	<2.00
BG08@6'	6'	11/05/2024	9.29	0.759	0.420	<2.00
Highest Background @ 0 - 6' (SM)			9.39	8.84	3.83	-
BG09@4'	4'	11/05/2024	8.45	2.93	0.739	<2.00
BG09@6'	6'	11/05/2024	8.51	3.45	0.636	<2.00
Highest Background @ 0 - 6' (SM)			8.51	3.45	0.739	-

Notes:

(1) Standards for soil are taken from ECMC Table 915-1: Soil Suitability for Reclamation (Effective January 15, 2021)

ECMC = Colorado Energy & Carbon Management Commission

(<) = Analytical result is less than the indicated laboratory reporting limit

mmhos/cm = millimhos per centimeter

TABLE 5
KIYOTA 3-35



SOIL ANALYTICAL DATA - SOIL RECLAMATION
CRESTONE PEAK RESOURCES OPERATING, LLC

Soil Sample Location	Depth	Date	pH	SAR	EC (mmhos/cm)	Boron (mg/L)
ECMC Soil Suitability for Reclamation⁽¹⁾			6 - 8.3	< 6	< 4	2

mg/L = milligrams per liter

pH = Potential of Hydrogen

SAR = Sodium Adsorption Ratio

EC = Electrical Conductivity

BOLD = Analytical result is in exceedance of ECMC Table 915-1: Soil Suitability for Reclamation Concentrations

Highest background concentration

* Result exceeded the ECMC Table 915-1 standard, but was within site-specific background concentrations