

Inspection Photos

Location Name: TEP ROCKY MOUNTAIN LLC FEDERAL RU 13-6 Pad

Location ID: 324106



Photo # 2409 From entrance to location

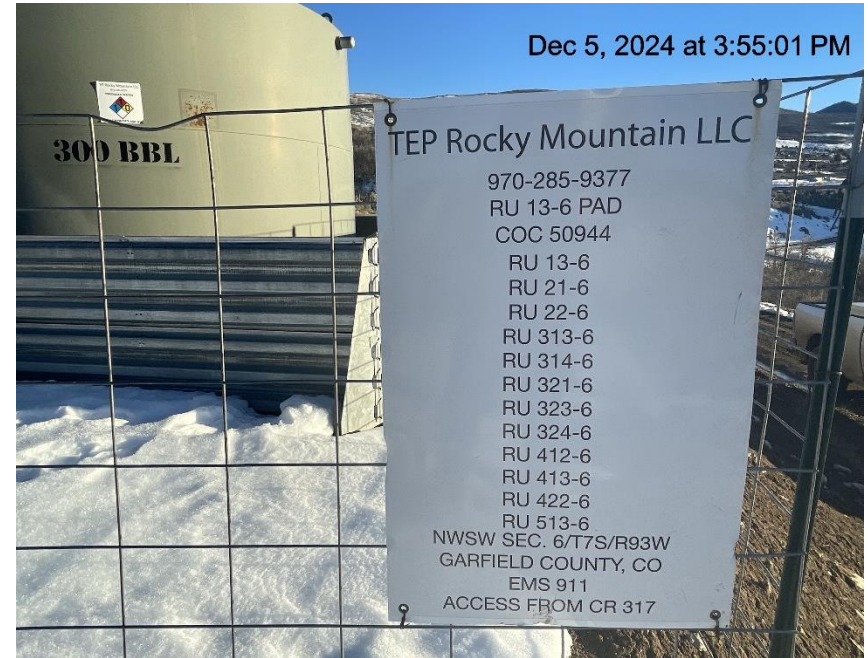


Photo # 2410 Location

Inspection Photos

Location Name: TEP ROCKY MOUNTAIN LLC FEDERAL RU 13-6 Pad
Location ID: 324106



Photo # 2411 Location



Photo # 2412 Location

Inspection Photos

Location Name: TEP ROCKY MOUNTAIN LLC FEDERAL RU 13-6 Pad

Location ID: 324106



Photo # 2413 Location



Photo # 2414 Location



COLORADO
Energy & Carbon Management
Commission
Department of Natural Resources

Inspection Photos

Location Name: TEP ROCKY MOUNTAIN LLC FEDERAL RU 13-6 Pad

Location ID: 324106



Photo # 2415 Location

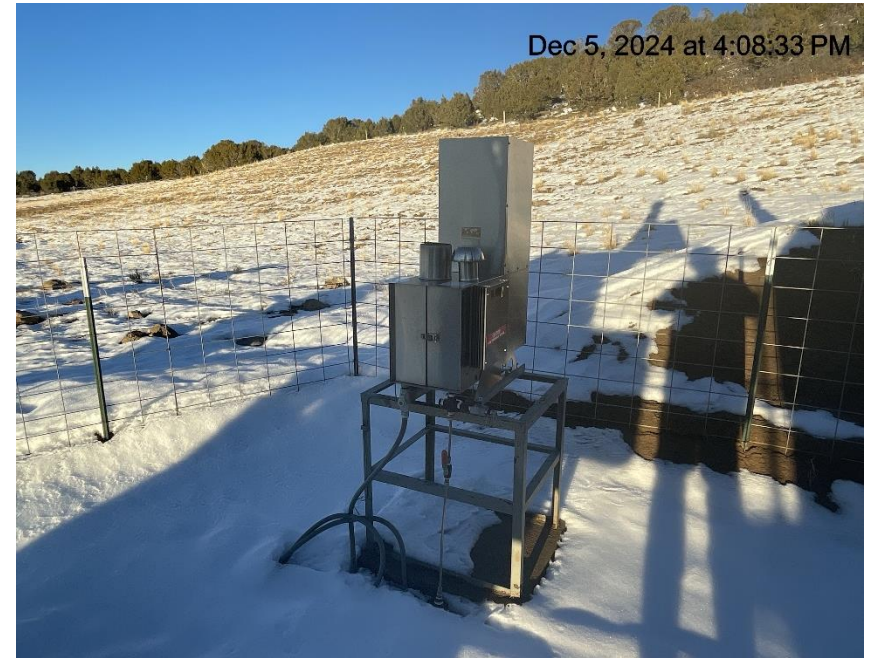


Photo # 2416 Location

Inspection Photos

Location Name: TEP ROCKY MOUNTAIN LLC FEDERAL RU 13-6 Pad

Location ID: 324106



Dec 5, 2024 at 4:03:52 PM

Photo # 2417 Location



Dec 5, 2024 at 4:04:34 PM

Photo # 2418 Location

Inspection Photos

Location Name: TEP ROCKY MOUNTAIN LLC FEDERAL RU 13-6 Pad

Location ID: 324106

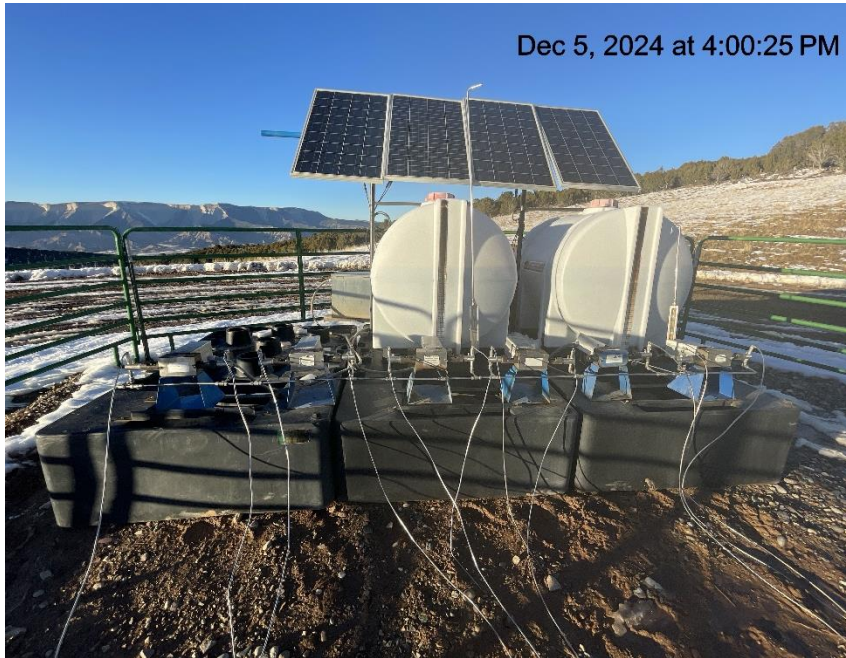


Photo # 2419 Location



**Photo # 2420 Multiple openings on chemical tank
containment/available for entry by wildlife/wildlife hazard**

Inspection Photos

Location Name: TEP ROCKY MOUNTAIN LLC FEDERAL RU 13-6 Pad

Location ID: 324106



Photo # 2421 Secondary containment insufficient/does not comply with CECMC rules.



Photo # 2422 Unable to locate FORM 4 SUNDRY for liquid nitrogen tank.

Inspection Photos

Location Name: TEP ROCKY MOUNTAIN LLC FEDERAL RU 13-6 Pad

Location ID: 324106



Photo # 2423 Summit Midstream meter house & pig station are not listed in operators FORM 2A



Photo # 2424 Chemical tanks not in operators FORM 2A or FORM 4 SUNDRY.