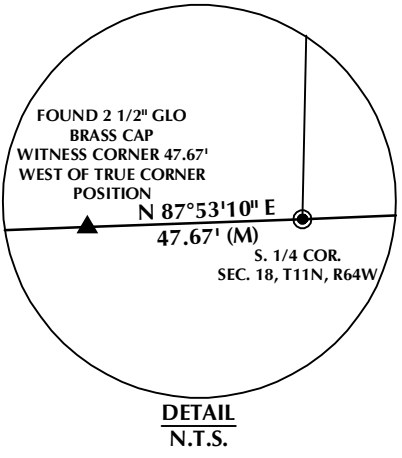
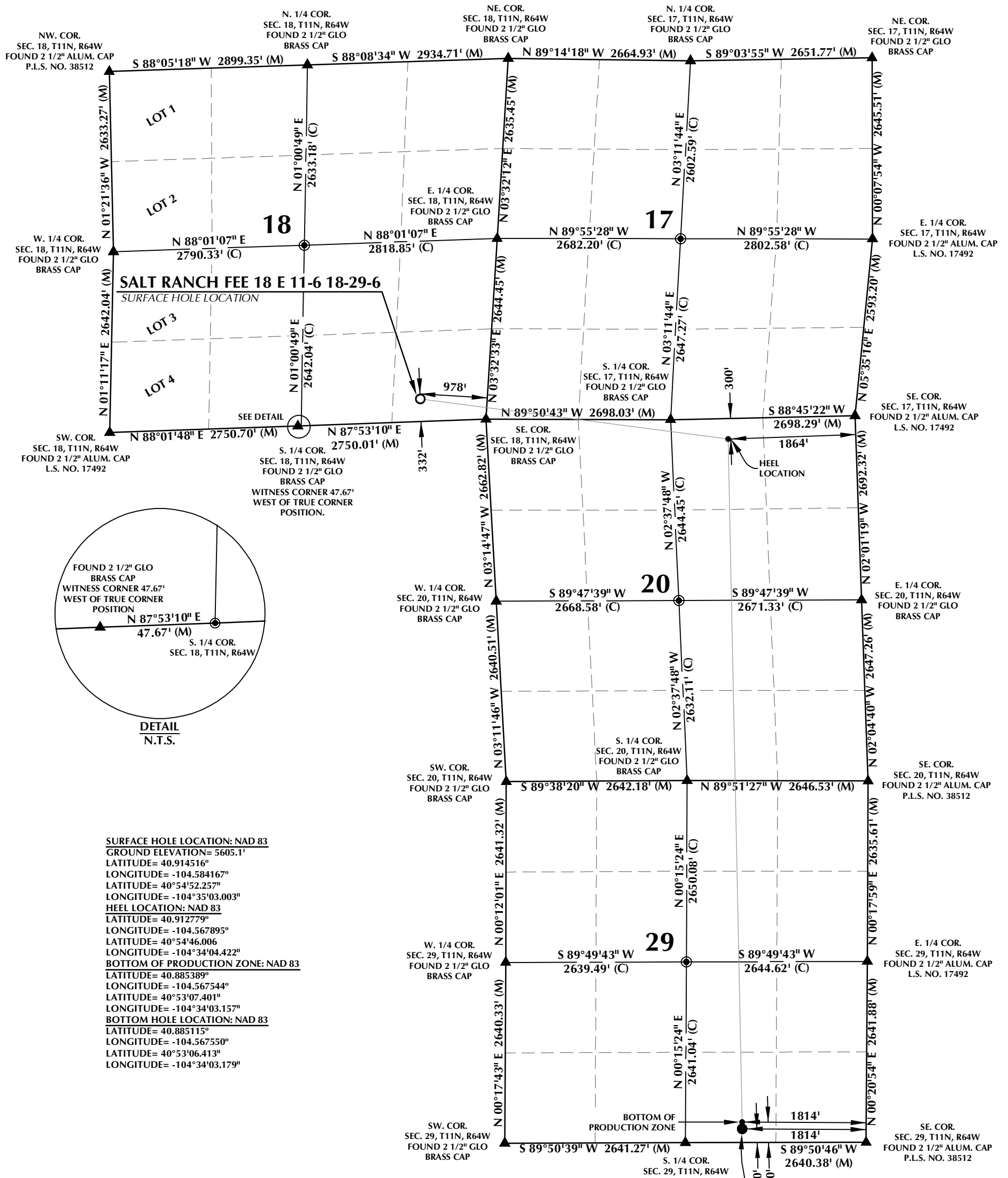


# T11N, R64W



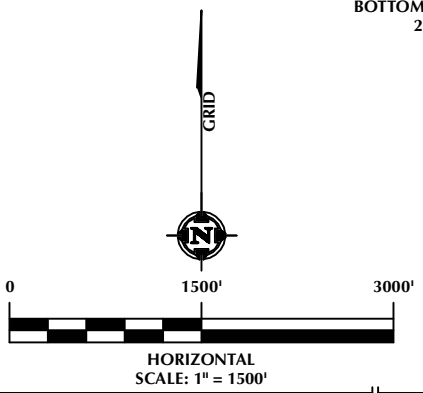
**SURFACE HOLE LOCATION: NAD 83**  
 GROUND ELEVATION= 5605.1'  
 LATITUDE= 40.914516°  
 LONGITUDE= -104.584167°  
 LATITUDE= 40°54'52.257"  
 LONGITUDE= -104°35'03.003"  
**HEEL LOCATION: NAD 83**  
 LATITUDE= 40.912779°  
 LONGITUDE= -104.567895°  
 LATITUDE= 40°54'46.006"  
 LONGITUDE= -104°34'04.422"  
**BOTTOM OF PRODUCTION ZONE: NAD 83**  
 LATITUDE= 40.885389°  
 LONGITUDE= -104.567544°  
 LATITUDE= 40°53'07.401"  
 LONGITUDE= -104°34'03.157"  
**BOTTOM HOLE LOCATION: NAD 83**  
 LATITUDE= 40.885115°  
 LONGITUDE= -104.567550°  
 LATITUDE= 40°53'06.413"  
 LONGITUDE= -104°34'03.179"

**CERTIFICATE OF SURVEYOR:**

THIS IS TO CERTIFY THAT THE ABOVE WAS PREPARED FROM FIELD NOTES OF ACTUAL SURVEYS MADE BY ME OR UNDER MY SUPERVISION AND THAT THE SAME ARE TRUE AND CORRECT TO THE BEST OF MY KNOWLEDGE AND BELIEF. THIS CERTIFICATE DOES NOT REPRESENT A LAND SURVEY THAT OR IMPROVEMENT SURVEY PLAN AS DEFINED BY C.R.S. 38-51-102 AND CANNOT BE RELIED UPON TO DETERMINE OWNERSHIP.

*Randall K. French*  
 RANDALL K. FRENCH  
 PROFESSIONAL LAND SURVEYOR  
 COLORADO REGISTRATION NUMBER 38512  
 11/15/24

NOTICE:  
 ACCORDING TO COLORADO STATE LAW YOU MUST COMMENCE A LEGAL ACTION BASED UPON ANY DEFECT IN THIS SURVEY WITHIN THREE YEARS FROM YOUR FIRST DISCOVERY OF SUCH DEFECT. IN NO EVENT MAY ANY ACTION BE BASED UPON ANY DEFECT IN THIS SURVEY BE COMMENCED MORE THAN TEN YEARS FROM THE DATE ON THE CERTIFICATION SHOWN HEREON.



**NOTES:**

- ▲ INDICATES SECTION CORNER.
- INDICATES CALCULATED CORNER.
- ELEVATION BASED ON NAVD88 (GEOID18).
- BASIS OF BEARINGS DERIVED FROM COLORADO COORDINATE SYSTEM OF 1983, NORTH ZONE.
- ALL MEASURED DISTANCES ARE GRID.
- COMBINED SCALE FACTOR: .99976326 CALCULATED FROM THE S. 1/4 CORNER OF SECTION 18, T11N, R64W.
- OPERATOR: JASON CURNUIT / PDOP = 1.6
- WELL FOOTAGES ARE MEASURED AT RIGHT ANGLES TO THE SECTION LINES.

**WELL PAD - SALT RANCH FEE 18**

SALT RANCH FEE 18 E 11-6 18-29-6  
 WELL LOCATION CERTIFICATE  
 332' FSL & 978' FEL (SESE) (SURFACE HOLE LOCATION)  
 LOCATED IN SECTION 18  
 300' FNL & 1864' FEL (NWNE) (HEEL LOCATION)  
 LOCATED IN SECTION 20  
 300' FSL & 1814' FEL (SWSE) (BOTTOM OF PRODUCTION ZONE)  
 200' FSL & 1814' FEL (SWSE) (BOTTOM HOLE LOCATION)  
 LOCATED IN SECTION 29  
 T11N, R64W, 6TH P.M.  
 WELD COUNTY, COLORADO

Prepared For:



**CONSULTING, LLC**  
 SHERIDAN OFFICE  
 1095 Saberton Avenue  
 Sheridan, Wyoming 82801  
 Phone 307-674-0609  
 LOVELAND OFFICE  
 6706 North Franklin Avenue  
 Loveland, Colorado 80538  
 Phone 970-776-4331

DRAFTED BY:	SJM	CHECKED BY:	RKF
DATE DRAFTED:	10/8/24	DATE SURVEYED:	9/30/24
REVISED:	11/15/24	FILE NAME:	24-130

K:\BISON\10\2024\130\_SALT\_RANCH\_FEE\_18\_E\_11-6\_18-29-6.dwg, 11/19/2024, 4:37:51 PM, smiller