

WGS84 $\pm 16\text{ft}$ 40.12396, -105.00984 $\Delta^{\text{ft}}_{\pm 11\text{ft}}$ 4905 $\nabla^{\circ, T}_{\pm 10}$ N345



ECMC
Environmental
Field Inspection



KPK
© 15-Nov-24 01:48:17 PM
ECMC Environmental Inspection

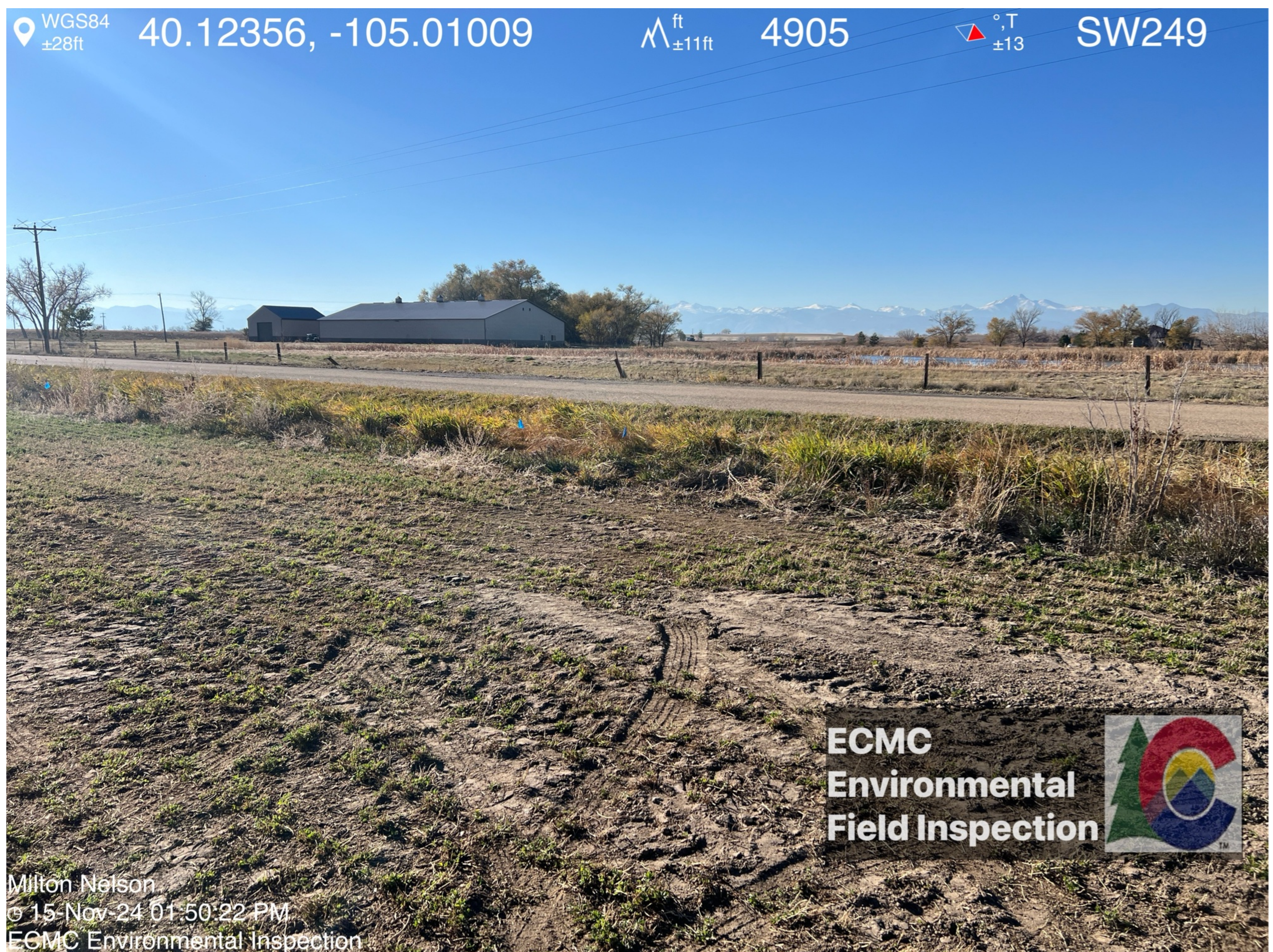
WGS84 $\pm 16\text{ft}$ 40.12396, -105.00984 $\Delta^{\text{ft}}_{\pm 11\text{ft}}$ 4905 $\nabla^{\circ, T}_{\pm 10}$ N9



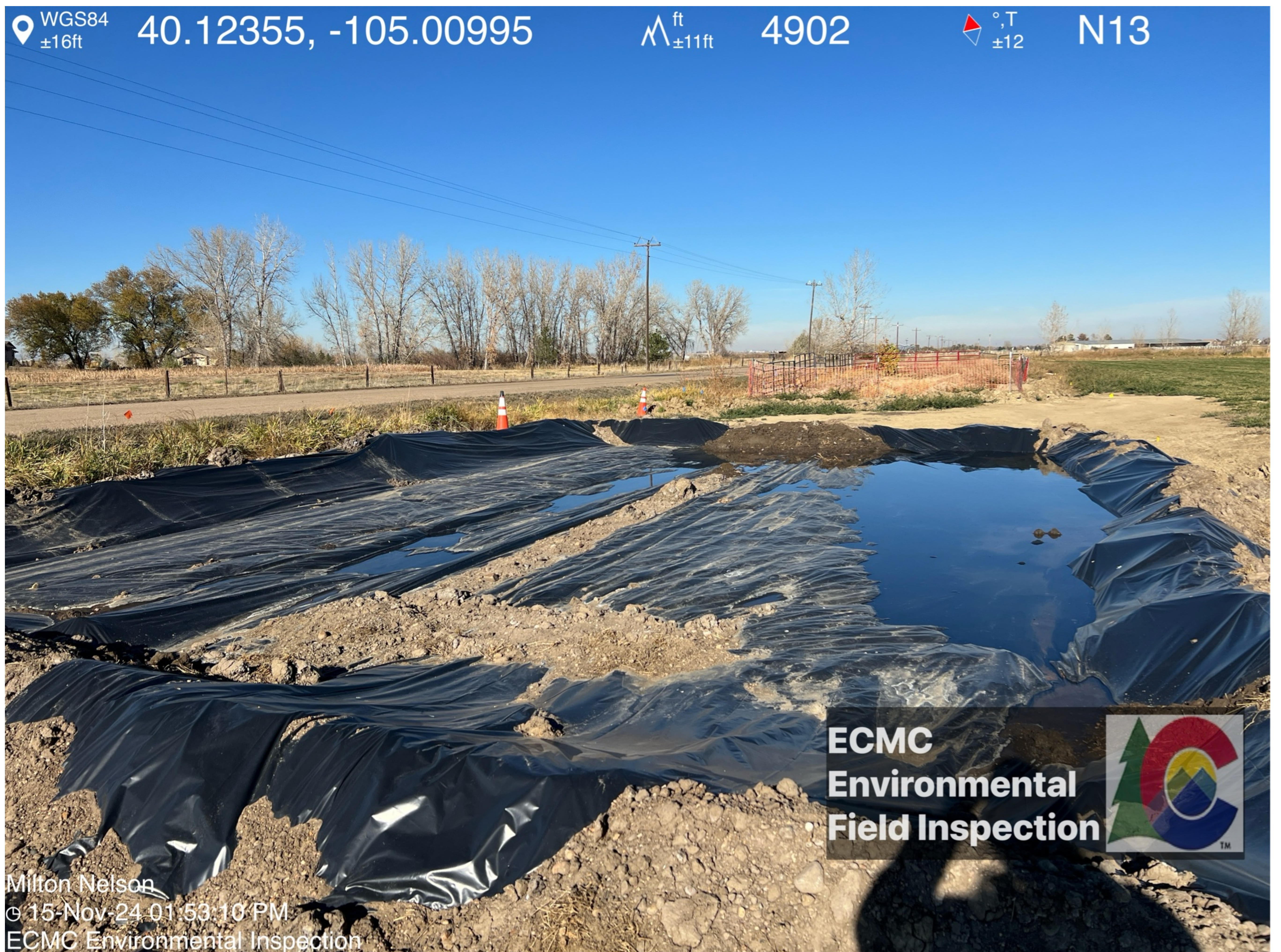
ECMC
Environmental
Field Inspection

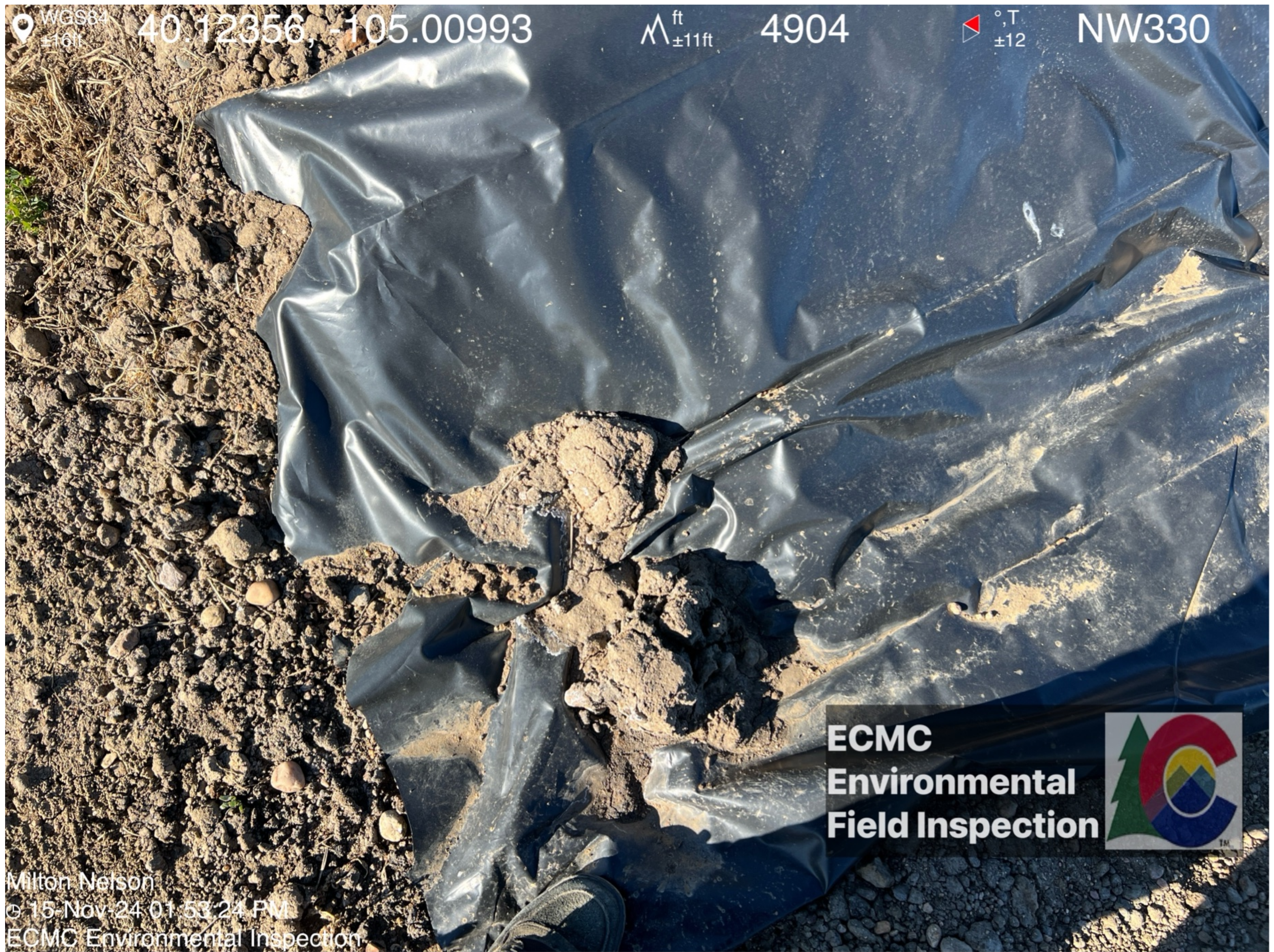


KPK
© 15-Nov-24 01:48:18 PM
ECMC Environmental Inspection









WGS84 40.12356, -105.00993

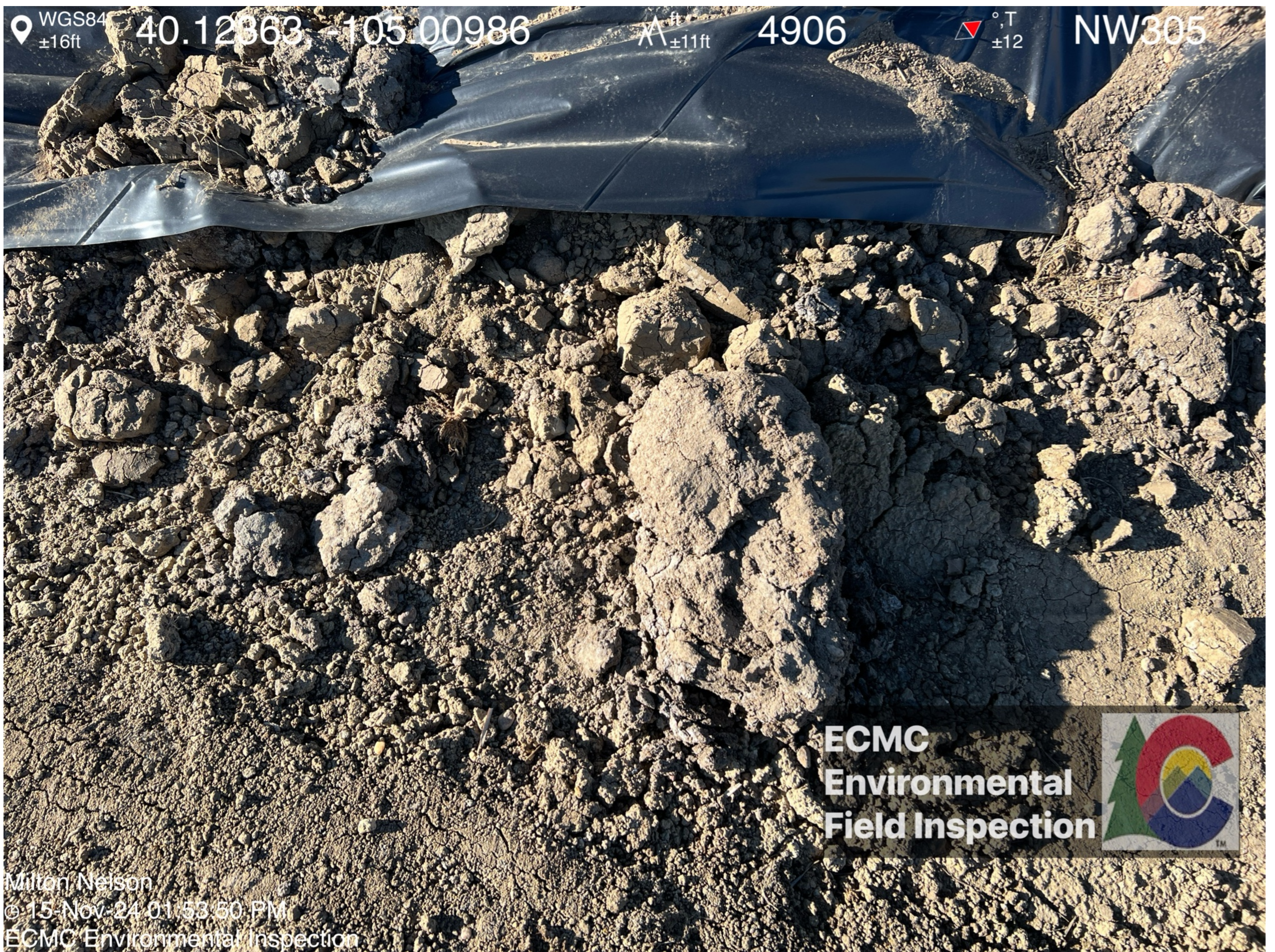
ft ±11ft 4904

°T ±12 NW330

**ECMC
Environmental
Field Inspection**



Milton Nelson
© 15-Nov-24 01:53:24 PM
ECMC Environmental Inspection



WGS84 40.12363, -105.00986

ft ±11ft 4906

°T ±12 NW305

**ECMC
Environmental
Field Inspection**



Milton Nelson
© 15-Nov-24 01:53:50 PM
ECMC Environmental Inspection





