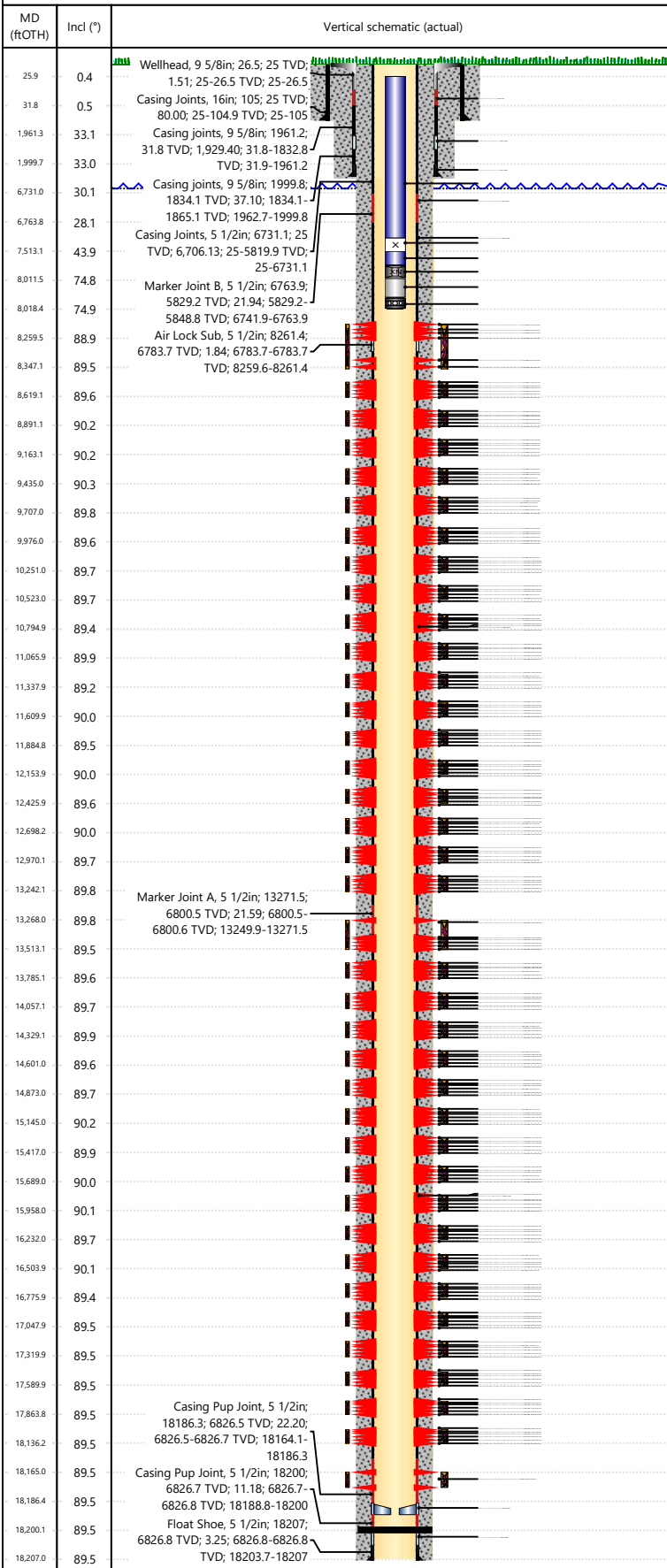




# Wellbore Schematic Input Report

Well Name: George 20N

## Original Hole [Land]



## Well Header

Surface UWI 0512351785	Asset Team 10004112	Production Tree Location Land	
Original RKB Elevation (ft) 4,743.00	Original KB to Ground (ft) 25.00	Original Spud Date 4/29/2024	Abandon Date
Range 64W	Well Sub-Status PR	High Press... N	
Directions To Well WCR 42-53 East 6/10 North into. ALL traffic must arrive from and leave to the West via CR 53		Latitude (°) 40° 17' 59.006" N	Longitude (°) 104° 33' 15.214" W

Comment

## Congressional Location

Quarter 3 SW	Quarter 4 NE	Section 21	Township 4	Twntshp N/S Dir N	Range 64	Range E/W Dir W
-----------------	-----------------	---------------	---------------	----------------------	-------------	--------------------

## Rig Operator

Rig/Unit Supervisor  
joel meraz

## Daily Cost Summary

Sum of Field Est (Cost)

0

## Wellbore Plug Back Total Depths

Date	PBTD (ftOTH)	Method	Com
5/5/2024			

## Wellbore Sections

Section Des	Hole Size (in)	Top Depth (ftOTH)	Btm Depth (ftOTH)
Conductor	16		
Conductor	16		
Surface	13 1/2		
Production	8 1/2		

## Zone Statuses

Zone Name	Status Date	Status
Niobrara B	12/4/2024	Open

## Casing Strings

### Conductor, Actual, <DepthBtm>ftOTH

Casing Description	Run Date	OD (in)	Wt/Len (l...)	Grade	Top Depth...	Set Depth...
Conductor	2/6/2024	16	84.00	J-55		

### Surface, Actual, <DepthBtm>ftOTH

Casing Description	Run Date	OD (in)	Wt/Len (l...)	Grade	Top Depth...	Set Depth...
Surface	2/25/2024	9 5/8	36.00	J-55		

### Production, Actual, <DepthBtm>ftOTH

Casing Description	Run Date	OD (in)	Wt/Len (l...)	Grade	Top Depth...	Set Depth...
Production	5/5/2024	5 1/2	20.00	P-110		

## Cement

Des	Start Date	Top (ftOTH)	Btm (ftOTH)
Conductor Cement	2/6/2024		
Surface	2/25/2024		
Production Casing Cement	5/1/2024		

## Proposed Cement

Des	Top (ftOTH)	Btm (ftOTH)

## Tubing Strings

Tubing Description	Run Date	String...	ID (in)	Wt (lb/ft)	Grade	Len (ft)	Set De...
Tubing - Production	11/24/2024	2 3/8	1.995	4.70	L-80	7,993.39	

## Tubing Components

Item Des	OD (in)	Wt (lb/ft)	Grade	Jts	Len (ft)	Btm (ftOTH)	Btm (TVD) (ftOTH)
Tubing Hanger				1	0.85		
Tubing	2 3/8	4.70	L-80	226	7,486.50		
X-Nipple	2 3/8			1	0.89		
Tubing	2 3/8	4.70	L-80	15	497.25		
XN - Nipple	2 3/8			1	0.90		
Tubing Pup Joint	2 3/8	4.70	L-80	1	6.10		
MULE SHOE/RD	2 3/8			1	0.90		

## Other In Hole

Run Date	Des	Make	OD (in)	Top (ftOTH)	Btm (ftOTH)





# Wellbore Schematic Input Report

Well Name: George 20N

Original Hole [Land]			Perforation Data				
MD (ftOHT)	Incl (°)	Vertical schematic (actual)	Linked Zone	Sum of Entered Shot Total	Top (ftOHT)	Btm (ftOHT)	Date
25.9	0.4	Wellhead, 9 5/8in; 26.5; 25 TVD; 1.51; 25-26.5 TVD; 25-26.5	Niobrara B, Original Hole	4			10/26/2024
31.8	0.5	Casing Joints, 16in; 105; 25 TVD; 80.00; 25-104.9 TVD; 25-105	Niobrara B, Original Hole	4			10/26/2024
1961.3	33.1	Casing joints, 9 5/8in; 1961.2; 31.8 TVD; 1,929.40; 31.8-1832.8	Niobrara B, Original Hole	4			10/26/2024
1999.7	33.0	TVD; 31.9-1961.2	Niobrara B, Original Hole	4			10/26/2024
6731.0	30.1	Casing joints, 9 5/8in; 1999.8; 1834.1 TVD; 37.10; 1834.1-1865.1 TVD; 1962.7-1999.8	Niobrara B, Original Hole	4			10/26/2024
6763.8	28.1	Casing Joints, 5 1/2in; 6731.1; 25 TVD; 6,706.13; 25-5819.9 TVD; 25-6731.1	Niobrara B, Original Hole	4			10/25/2024
7513.1	43.9	Marker Joint B, 5 1/2in; 6763.9; 5829.2 TVD; 21.94; 5829.2-5848.8 TVD; 6741.9-6763.9	Niobrara B, Original Hole	4			10/25/2024
8011.5	74.8	Air Lock Sub, 5 1/2in; 8261.4; 6783.7 TVD; 1.84; 6783.7-6783.7	Niobrara B, Original Hole	4			10/25/2024
8018.4	74.9	TVD; 8259.6-8261.4	Niobrara B, Original Hole	4			10/25/2024
8259.5	88.9		Niobrara B, Original Hole	4			10/25/2024
8347.1	89.5		Niobrara B, Original Hole	4			10/25/2024
8619.1	89.6		Niobrara B, Original Hole	4			10/25/2024
8891.1	90.2		Niobrara B, Original Hole	4			10/25/2024
9163.1	90.2		Niobrara B, Original Hole	4			10/25/2024
9435.0	90.3		Niobrara B, Original Hole	4			10/25/2024
9707.0	89.8		Niobrara B, Original Hole	4			10/25/2024
9976.0	89.6		Niobrara B, Original Hole	4			10/25/2024
10251.0	89.7		Niobrara B, Original Hole	4			10/25/2024
10523.0	89.7		Niobrara B, Original Hole	4			10/25/2024
10794.9	89.4		Niobrara B, Original Hole	4			10/25/2024
11065.9	89.9		Niobrara B, Original Hole	4			10/25/2024
11337.9	89.2		Niobrara B, Original Hole	4			10/25/2024
11609.9	90.0		Niobrara B, Original Hole	4			10/25/2024
11884.8	89.5		Niobrara B, Original Hole	4			10/25/2024
12153.9	90.0		Niobrara B, Original Hole	4			10/25/2024
12425.9	89.6		Niobrara B, Original Hole	4			10/25/2024
12698.2	90.0		Niobrara B, Original Hole	4			10/25/2024
12970.1	89.7		Niobrara B, Original Hole	4			10/24/2024
13242.1	89.8		Niobrara B, Original Hole	4			10/24/2024
13268.0	89.8	Marker Joint A, 5 1/2in; 13271.5; 6800.5 TVD; 21.59; 6800.5-6800.6 TVD; 13249.9-13271.5	Niobrara B, Original Hole	4			10/24/2024
13513.1	89.5		Niobrara B, Original Hole	4			10/24/2024
13785.1	89.6		Niobrara B, Original Hole	4			10/24/2024
14057.1	89.7		Niobrara B, Original Hole	4			10/24/2024
14329.1	89.9		Niobrara B, Original Hole	4			10/24/2024
14601.0	89.6		Niobrara B, Original Hole	4			10/24/2024
14873.0	89.7		Niobrara B, Original Hole	4			10/24/2024
15145.0	90.2		Niobrara B, Original Hole	4			10/24/2024
15417.0	89.9		Niobrara B, Original Hole	4			10/24/2024
15689.0	90.0		Niobrara B, Original Hole	4			10/24/2024
15958.0	90.1		Niobrara B, Original Hole	4			10/24/2024
16232.0	89.7		Niobrara B, Original Hole	4			10/24/2024
16503.9	90.1		Niobrara B, Original Hole	4			10/24/2024
16775.9	89.4		Niobrara B, Original Hole	4			10/23/2024
17047.9	89.5		Niobrara B, Original Hole	4			10/23/2024
17319.9	89.5		Niobrara B, Original Hole	4			10/23/2024
17589.9	89.5		Niobrara B, Original Hole	4			10/23/2024
17863.8	89.5	Casing Pup Joint, 5 1/2in; 18186.3; 6826.5 TVD; 22.20; 6826.5-6826.7 TVD; 18164.1-18186.3	Niobrara B, Original Hole	4			10/23/2024
18136.2	89.5		Niobrara B, Original Hole	4			10/23/2024
18165.0	89.5	Casing Pup Joint, 5 1/2in; 18200; 6826.7 TVD; 11.18; 6826.7-6826.8 TVD; 18188.8-18200	Niobrara B, Original Hole	4			10/23/2024
18186.4	89.5		Niobrara B, Original Hole	4			10/23/2024
18200.1	89.5	Float Shoe, 5 1/2in; 18207; 6826.8 TVD; 3.25; 6826.8-6826.8	Niobrara B, Original Hole	4			10/23/2024
18207.0	89.5	TVD; 18203.7-18207	Niobrara B, Original Hole	4			10/23/2024



# Wellbore Schematic Input Report

Well Name: George 20N

Original Hole [Land]			Perforation Data				
MD (ftOHT)	Incl (°)	Vertical schematic (actual)	Linked Zone	Sum of Entered Shot Total	Top (ftOHT)	Btm (ftOHT)	Date
25.9	0.4	Wellhead, 9 5/8in; 26.5; 25 TVD; 1.51; 25-26.5 TVD; 25-26.5	Niobrara B, Original Hole	4			10/23/2024
31.8	0.5	Casing Joints, 16in; 105; 25 TVD; 80.00; 25-104.9 TVD; 25-105	Niobrara B, Original Hole	4			10/23/2024
1961.3	33.1	Casing joints, 9 5/8in; 1961.2; 31.8 TVD; 1,929.40; 31.8-1832.8	Niobrara B, Original Hole	4			10/23/2024
1999.7	33.0	TVD; 31.9-1961.2	Niobrara B, Original Hole	4			10/23/2024
6731.0	30.1	Casing joints, 9 5/8in; 1999.8; 1834.1 TVD; 37.10; 1834.1-	Niobrara B, Original Hole	4			10/23/2024
6763.8	28.1	1865.1 TVD; 1962.7-1999.8	Niobrara B, Original Hole	4			10/23/2024
7513.1	43.9	Casing Joints, 5 1/2in; 6731.1; 25 TVD; 6,706.13; 25-5819.9 TVD;	Niobrara B, Original Hole	4			10/23/2024
8011.5	74.8	25-6731.1	Niobrara B, Original Hole	4			10/23/2024
8018.4	74.9	Marker Joint B, 5 1/2in; 6763.9; 5829.2 TVD; 21.94; 5829.2-	Niobrara B, Original Hole	4			10/23/2024
8259.5	88.9	5848.8 TVD; 6741.9-6763.9	Niobrara B, Original Hole	4			10/23/2024
8347.1	89.5	Air Lock Sub, 5 1/2in; 8261.4; 6783.7 TVD; 1.84; 6783.7-6783.7	Niobrara B, Original Hole	4			10/23/2024
8619.1	89.6	TVD; 8259.6-8261.4	Niobrara B, Original Hole	4			10/22/2024
8891.1	90.2		Niobrara B, Original Hole	4			10/22/2024
9163.1	90.2		Niobrara B, Original Hole	4			10/22/2024
9435.0	90.3		Niobrara B, Original Hole	4			10/22/2024
9707.0	89.8		Niobrara B, Original Hole	4			10/22/2024
9976.0	89.6		Niobrara B, Original Hole	4			10/22/2024
10251.0	89.7		Niobrara B, Original Hole	4			10/22/2024
10523.0	89.7		Niobrara B, Original Hole	4			10/22/2024
10794.9	89.4		Niobrara B, Original Hole	4			10/22/2024
11065.9	89.9		Niobrara B, Original Hole	4			10/22/2024
11337.9	89.2		Niobrara B, Original Hole	4			10/22/2024
11609.9	90.0		Niobrara B, Original Hole	4			10/22/2024
11884.8	89.5		Niobrara B, Original Hole	4			10/22/2024
12153.9	90.0		Niobrara B, Original Hole	4			10/22/2024
12425.9	89.6		Niobrara B, Original Hole	4			10/22/2024
12698.2	90.0		Niobrara B, Original Hole	4			10/22/2024
12970.1	89.7		Niobrara B, Original Hole	4			10/21/2024
13242.1	89.8		Niobrara B, Original Hole	4			10/21/2024
13268.0	89.8	Marker Joint A, 5 1/2in; 13271.5; 6800.5 TVD; 21.59; 6800.5-	Niobrara B, Original Hole	4			10/21/2024
13513.1	89.5	6800.6 TVD; 13249.9-13271.5	Niobrara B, Original Hole	4			10/21/2024
13785.1	89.6		Niobrara B, Original Hole	4			10/21/2024
14057.1	89.7		Niobrara B, Original Hole	4			10/21/2024
14329.1	89.9		Niobrara B, Original Hole	4			10/21/2024
14601.0	89.6		Niobrara B, Original Hole	4			10/21/2024
14873.0	89.7		Niobrara B, Original Hole	4			10/21/2024
15145.0	90.2		Niobrara B, Original Hole	4			10/21/2024
15417.0	89.9		Niobrara B, Original Hole	4			10/21/2024
15689.0	90.0		Niobrara B, Original Hole	4			10/21/2024
15958.0	90.1		Niobrara B, Original Hole	4			10/21/2024
16232.0	89.7		Niobrara B, Original Hole	4			10/21/2024
16503.9	90.1		Niobrara B, Original Hole	4			10/21/2024
16775.9	89.4		Niobrara B, Original Hole	4			10/21/2024
17047.9	89.5		Niobrara B, Original Hole	4			10/21/2024
17319.9	89.5		Niobrara B, Original Hole	4			10/21/2024
17589.9	89.5		Niobrara B, Original Hole	4			10/21/2024
17863.8	89.5	Casing Pup Joint, 5 1/2in; 18186.3; 6826.5 TVD; 22.20;	Niobrara B, Original Hole	4			10/21/2024
18136.2	89.5	6826.5-6826.7 TVD; 18164.1-	Niobrara B, Original Hole	4			10/21/2024
18165.0	89.5	18186.3	Niobrara B, Original Hole	4			10/21/2024
18186.4	89.5	Casing Pup Joint, 5 1/2in; 18200; 6826.7 TVD; 11.18; 6826.7-	Niobrara B, Original Hole	4			10/21/2024
18200.1	89.5	6826.8 TVD; 18188.8-18200	Niobrara B, Original Hole	4			10/21/2024
18207.0	89.5	Float Shoe, 5 1/2in; 18207; 6826.8 TVD; 3.25; 6826.8-6826.8	Niobrara B, Original Hole	4			10/21/2024
		TVD; 18203.7-18207	Niobrara B, Original Hole	4			10/21/2024



# Wellbore Schematic Input Report

Well Name: George 20N

Original Hole [Land]			Perforation Data				
MD (fROTH)	Incl (°)	Vertical schematic (actual)	Linked Zone	Sum of Entered Shot Total	Top (fROTH)	Btm (fROTH)	Date
25.9	0.4	Wellhead, 9 5/8in; 26.5; 25 TVD; 1.51; 25-26.5 TVD; 25-26.5	Niobrara B, Original Hole	4			10/21/2024
31.8	0.5	Casing Joints, 16in; 105; 25 TVD; 80.00; 25-104.9 TVD; 25-105	Niobrara B, Original Hole	4			10/20/2024
1961.3	33.1	Casing joints, 9 5/8in; 1961.2; 31.8 TVD; 1,929.40; 31.8-1832.8	Niobrara B, Original Hole	4			10/20/2024
1999.7	33.0	TVD; 31.9-1961.2	Niobrara B, Original Hole	4			10/20/2024
6731.0	30.1	Casing joints, 9 5/8in; 1999.8; 1834.1 TVD; 37.10; 1834.1-	Niobrara B, Original Hole	4			10/20/2024
6763.8	28.1	1865.1 TVD; 1962.7-1999.8	Niobrara B, Original Hole	4			10/20/2024
7513.1	43.9	Casing Joints, 5 1/2in; 6731.1; 25 TVD; 6,706.13; 25-5819.9 TVD;	Niobrara B, Original Hole	4			10/20/2024
8011.5	74.8	25-6731.1	Niobrara B, Original Hole	4			10/20/2024
8018.4	74.9	Marker Joint B, 5 1/2in; 6763.9; 5829.2 TVD; 21.94; 5829.2-	Niobrara B, Original Hole	4			10/20/2024
8259.5	88.9	5848.8 TVD; 6741.9-6763.9	Niobrara B, Original Hole	4			10/20/2024
8347.1	89.5	Air Lock Sub, 5 1/2in; 8261.4; 6783.7 TVD; 1.84; 6783.7-6783.7	Niobrara B, Original Hole	4			10/20/2024
8619.1	89.6	TVD; 8259.6-8261.4	Niobrara B, Original Hole	4			10/20/2024
8891.1	90.2		Niobrara B, Original Hole	4			10/20/2024
9163.1	90.2		Niobrara B, Original Hole	4			10/20/2024
9435.0	90.3		Niobrara B, Original Hole	4			10/20/2024
9707.0	89.8		Niobrara B, Original Hole	4			10/20/2024
9976.0	89.6		Niobrara B, Original Hole	4			10/20/2024
10251.0	89.7		Niobrara B, Original Hole	4			10/20/2024
10523.0	89.7		Niobrara B, Original Hole	4			10/20/2024
10794.9	89.4		Niobrara B, Original Hole	4			10/20/2024
11065.9	89.9		Niobrara B, Original Hole	4			10/20/2024
11337.9	89.2		Niobrara B, Original Hole	4			10/20/2024
11609.9	90.0		Niobrara B, Original Hole	4			10/19/2024
11884.8	89.5		Niobrara B, Original Hole	4			10/19/2024
12153.9	90.0		Niobrara B, Original Hole	4			10/19/2024
12425.9	89.6		Niobrara B, Original Hole	4			10/19/2024
12698.2	90.0		Niobrara B, Original Hole	4			10/19/2024
12970.1	89.7		Niobrara B, Original Hole	4			10/19/2024
13242.1	89.8		Niobrara B, Original Hole	4			10/19/2024
13268.0	89.8	Marker Joint A, 5 1/2in; 13271.5; 6800.5 TVD; 21.59; 6800.5-	Niobrara B, Original Hole	4			10/19/2024
13513.1	89.5	6800.6 TVD; 13249.9-13271.5	Niobrara B, Original Hole	4			10/19/2024
13785.1	89.6		Niobrara B, Original Hole	4			10/19/2024
14057.1	89.7		Niobrara B, Original Hole	4			10/19/2024
14329.1	89.9		Niobrara B, Original Hole	4			10/19/2024
14601.0	89.6		Niobrara B, Original Hole	4			10/19/2024
14873.0	89.7		Niobrara B, Original Hole	4			10/19/2024
15145.0	90.2		Niobrara B, Original Hole	4			10/19/2024
15417.0	89.9		Niobrara B, Original Hole	4			10/19/2024
15689.0	90.0		Niobrara B, Original Hole	4			10/19/2024
15958.0	90.1		Niobrara B, Original Hole	4			10/19/2024
16232.0	89.7		Niobrara B, Original Hole	4			10/19/2024
16503.9	90.1		Niobrara B, Original Hole	4			10/19/2024
16775.9	89.4		Niobrara B, Original Hole	4			10/19/2024
17047.9	89.5		Niobrara B, Original Hole	4			10/19/2024
17319.9	89.5		Niobrara B, Original Hole	4			10/19/2024
17589.9	89.5		Niobrara B, Original Hole	4			10/19/2024
17863.8	89.5	Casing Pup Joint, 5 1/2in; 18186.3; 6826.5 TVD; 22.20; 6826.5-6826.7 TVD; 18164.1-	Niobrara B, Original Hole	4			10/19/2024
18136.2	89.5	18186.3	Niobrara B, Original Hole	4			10/19/2024
18165.0	89.5	Casing Pup Joint, 5 1/2in; 18200; 6826.7 TVD; 11.18; 6826.7-	Niobrara B, Original Hole	4			10/19/2024
18186.4	89.5	6826.8 TVD; 18188.8-18200	Niobrara B, Original Hole	4			10/19/2024
18200.1	89.5	Float Shoe, 5 1/2in; 18207; 6826.8 TVD; 3.25; 6826.8-6826.8	Niobrara B, Original Hole	4			10/19/2024
18207.0	89.5	TVD; 18203.7-18207	Niobrara B, Original Hole	4			10/19/2024
<b>Total</b>				<b>900</b>			
<b>Job Supply Amounts</b>							
Supply Item Des		Job Supply Type	Uni...	Job Category	Total...	Total...	Total...
<b>Daily Cost Breakdown by Category</b>							
Field Est (Cost)		Description	Note				