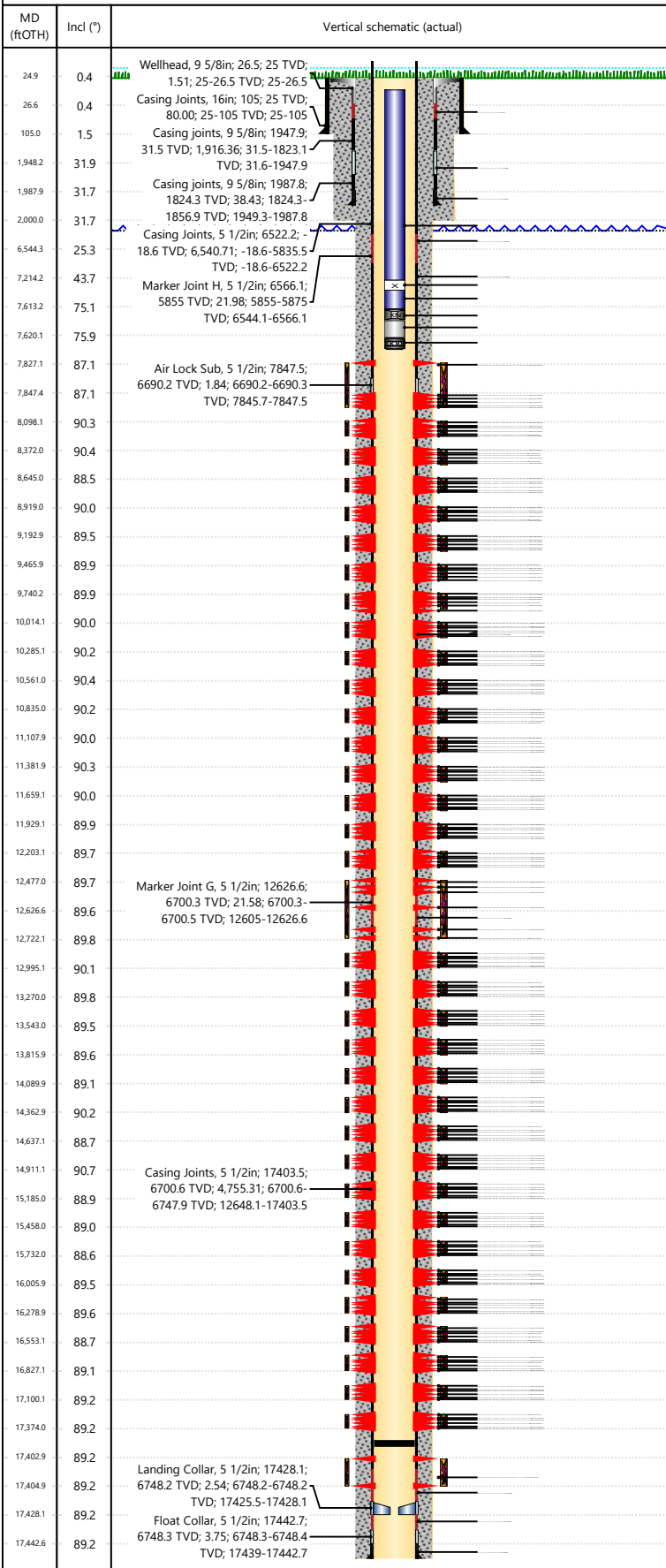




Wellbore Schematic Input Report

Well Name: George 19NA

Original Hole [Land]



Well Header			
Surface UWI 0512351780	Asset Team 10004114	Production Tree Location Land	
Original RKB Elevation (ft) 4,743.00	Original KB to Ground (ft) 25.00	Original Spud Date 4/25/2024	Abandon Date
Range 64W	Well Sub-Status PR	High Press... Y	
Directions To Well WCR 42-53 East 6/10 North into. ALL traffic must arrive from and leave to the West via CR 53		Latitude (°) 40° 17' 59.104" N	Longitude (°) 104° 33' 15.325" W
Comment			

Congressional Location						
Quarter 3 SW	Quarter 4 NE	Section 21	Township 4	Twnshp N/S Dir N	Range 64	Range E/W Dir W

Rig Operator	
Rig/Unit Supervisor Jolel Meraz	

Daily Cost Summary	
Sum of Field Est (Cost)	0

Wellbore Plug Back Total Depths			
Date	PBTD (ftOTH)	Method	Com
11/12/2024		COIL TUBING	

Wellbore Sections			
Section Des	Hole Size (in)	Top Depth (ftOTH)	Btm Depth (ftOTH)
Conductor	16		
Surface	13 1/2		
Production	8 1/2		

Zone Statuses		
Zone Name	Status Date	Status
Niobrara A	12/3/2024	Open

Casing Strings						
Conductor, Actual, <DepthBtm>ftOTH						
Casing Description	Run Date	OD (in)	Wt/Len (l...)	Grade	Top Depth...	Set Depth...
Conductor	2/6/2024	16	84.00	J-55		

Surface, Actual, <DepthBtm>ftOTH						
Casing Description	Run Date	OD (in)	Wt/Len (l...)	Grade	Top Depth...	Set Depth...
Surface	2/25/2024	9 5/8	36.00	J-55		

Production, Actual, <DepthBtm>ftOTH						
Casing Description	Run Date	OD (in)	Wt/Len (l...)	Grade	Top Depth...	Set Depth...
Production	4/28/2024	5 1/2	20.00	P-110		

Cement			
Des	Start Date	Top (ftOTH)	Btm (ftOTH)
Conductor Cement	2/6/2024		
Surface	2/25/2024		
Production Casing Cement	4/28/2024		

Proposed Cement			
Des	Top (ftOTH)	Btm (ftOTH)	

Tubing Strings							
Tubing Description	Run Date	String...	ID (in)	Wt (lb/ft)	Grade	Len (ft)	Set De...
Tubing - Production	11/23/2024	4	2 3/8	1.995	L-80	7,596.03	

Tubing Components							
Item Des	OD (in)	Wt (lb/ft)	Grade	Jts	Len (ft)	Btm (ftOTH)	Btm (TVD) (ftOTH)
Tubing Hanger				1	0.85		
Tubing	2 3/8	4.70	L-80	217	7,188.48		
X-Nipple	2 3/8			1	0.80		
Tubing	2 3/8	4.70	L-80	12	398.20		
XN - Nipple	2 3/8			1	0.85		
Tubing Pup Joint	2 3/8	4.70	L-80	1	6.00		
MULE SHOE/RD	2 3/8			1	0.85		

Other In Hole						
Run Date	Des	Make	OD (in)	Top (ftOTH)	Btm (ftOTH)	



Wellbore Schematic Input Report

Well Name: George 19NA

Original Hole [Land]			Perforation Data				
MD (ftOHT)	Incl (°)	Vertical schematic (actual)	Linked Zone	Sum of Entered Shot Total	Top (ftOHT)	Btm (ftOHT)	Date
24.9	0.4	Wellhead, 9 5/8in; 26.5; 25 TVD; 1.51; 25-26.5 TVD; 25-26.5	Niobrara A, Original Hole	4			10/25/2024
26.6	0.4	Casing Joints, 16in; 105; 25 TVD; 80.00; 25-105 TVD; 25-105	Niobrara A, Original Hole	4			10/25/2024
105.0	1.5	Casing joints, 9 5/8in; 1947.9; 31.5 TVD; 1,916.36; 31.5-1823.1 TVD; 31.6-1947.9	Niobrara A, Original Hole	4			10/25/2024
1,948.2	31.9		Niobrara A, Original Hole	4			10/25/2024
1,987.9	31.7	Casing joints, 9 5/8in; 1987.8; 1824.3 TVD; 38.43; 1824.3-1856.9 TVD; 1949.3-1987.8	Niobrara A, Original Hole	4			10/25/2024
2,000.0	31.7		Niobrara A, Original Hole	4			10/25/2024
6,544.3	25.3	Casing Joints, 5 1/2in; 6522.2; 18.6 TVD; 6,540.71; -18.6-5835.5 TVD; -18.6-6522.2	Niobrara A, Original Hole	4			10/25/2024
7,214.2	43.7	Marker Joint H, 5 1/2in; 6566.1; 5855 TVD; 21.98; 5855-5875 TVD; 6544.1-6566.1	Niobrara A, Original Hole	4			10/25/2024
7,613.2	75.1		Niobrara A, Original Hole	4			10/25/2024
7,620.1	75.9		Niobrara A, Original Hole	4			10/25/2024
7,827.1	87.1	Air Lock Sub, 5 1/2in; 7847.5; 6690.2 TVD; 1.84; 6690.2-6690.3 TVD; 7845.7-7847.5	Niobrara A, Original Hole	4			10/25/2024
7,847.4	87.1		Niobrara A, Original Hole	4			10/25/2024
8,098.1	90.3		Niobrara A, Original Hole	4			10/24/2024
8,372.0	90.4		Niobrara A, Original Hole	4			10/24/2024
8,645.0	88.5		Niobrara A, Original Hole	4			10/24/2024
8,919.0	90.0		Niobrara A, Original Hole	4			10/24/2024
9,192.9	89.5		Niobrara A, Original Hole	4			10/24/2024
9,465.9	89.9		Niobrara A, Original Hole	4			10/24/2024
9,740.2	89.9		Niobrara A, Original Hole	4			10/24/2024
10,014.1	90.0		Niobrara A, Original Hole	4			10/24/2024
10,285.1	90.2		Niobrara A, Original Hole	4			10/24/2024
10,561.0	90.4		Niobrara A, Original Hole	4			10/24/2024
10,835.0	90.2		Niobrara A, Original Hole	4			10/24/2024
11,107.9	90.0		Niobrara A, Original Hole	4			10/24/2024
11,381.9	90.3		Niobrara A, Original Hole	4			10/24/2024
11,659.1	90.0		Niobrara A, Original Hole	4			10/24/2024
11,929.1	89.9		Niobrara A, Original Hole	4			10/24/2024
12,203.1	89.7		Niobrara A, Original Hole	4			10/23/2024
12,477.0	89.7	Marker Joint G, 5 1/2in; 12626.6; 6700.3 TVD; 21.58; 6700.3-6700.5 TVD; 12605-12626.6	Niobrara A, Original Hole	4			10/23/2024
12,626.6	89.6		Niobrara A, Original Hole	4			10/23/2024
12,722.1	89.8		Niobrara A, Original Hole	4			10/23/2024
12,995.1	90.1		Niobrara A, Original Hole	4			10/23/2024
13,270.0	89.8		Niobrara A, Original Hole	4			10/23/2024
13,543.0	89.5		Niobrara A, Original Hole	4			10/23/2024
13,815.9	89.6		Niobrara A, Original Hole	4			10/23/2024
14,089.9	89.1		Niobrara A, Original Hole	4			10/23/2024
14,362.9	90.2		Niobrara A, Original Hole	4			10/23/2024
14,637.1	88.7		Niobrara A, Original Hole	4			10/23/2024
14,911.1	90.7	Casing Joints, 5 1/2in; 17403.5; 6700.6 TVD; 4,755.31; 6700.6-6747.9 TVD; 12648.1-17403.5	Niobrara A, Original Hole	4			10/23/2024
15,185.0	88.9		Niobrara A, Original Hole	4			10/23/2024
15,458.0	89.0		Niobrara A, Original Hole	4			10/23/2024
15,732.0	88.6		Niobrara A, Original Hole	4			10/23/2024
16,005.9	89.5		Niobrara A, Original Hole	4			10/23/2024
16,278.9	89.6		Niobrara A, Original Hole	4			10/23/2024
16,553.1	88.7		Niobrara A, Original Hole	4			10/23/2024
16,827.1	89.1		Niobrara A, Original Hole	4			10/23/2024
17,100.1	89.2		Niobrara A, Original Hole	4			10/23/2024
17,374.0	89.2		Niobrara A, Original Hole	4			10/23/2024
17,402.9	89.2		Niobrara A, Original Hole	4			10/23/2024
17,404.9	89.2	Landing Collar, 5 1/2in; 17428.1; 6748.2 TVD; 2.54; 6748.2-6748.2 TVD; 17425.5-17428.1	Niobrara A, Original Hole	4			10/23/2024
17,428.1	89.2	Float Collar, 5 1/2in; 17442.7; 6748.3 TVD; 3.75; 6748.3-6748.4 TVD; 17439-17442.7	Niobrara A, Original Hole	4			10/23/2024
17,442.6	89.2		Niobrara A, Original Hole	4			10/23/2024



Wellbore Schematic Input Report

Well Name: George 19NA

Original Hole [Land]			Perforation Data				
MD (ftO/H)	Incl (°)	Vertical schematic (actual)	Linked Zone	Sum of Entered Shot Total	Top (ftO/H)	Btm (ftO/H)	Date
24.9	0.4	Wellhead, 9 5/8in; 26.5; 25 TVD; 1.51; 25-26.5 TVD; 25-26.5	Niobrara A, Original Hole	4			10/23/2024
26.6	0.4	Casing Joints, 16in; 105; 25 TVD; 80.00; 25-105 TVD; 25-105	Niobrara A, Original Hole	4			10/22/2024
105.0	1.5	Casing joints, 9 5/8in; 1947.9; 31.5 TVD; 1,916.36; 31.5-1823.1 TVD; 31.6-1947.9	Niobrara A, Original Hole	4			10/22/2024
1,948.2	31.9		Niobrara A, Original Hole	4			10/22/2024
1,987.9	31.7	Casing joints, 9 5/8in; 1987.8; 1824.3 TVD; 38.43; 1824.3-1856.9 TVD; 1949.3-1987.8	Niobrara A, Original Hole	4			10/22/2024
2,000.0	31.7		Niobrara A, Original Hole	4			10/22/2024
6,544.3	25.3	Casing Joints, 5 1/2in; 6522.2; 18.6 TVD; 6,540.71; -18.6-5835.5 TVD; -18.6-6522.2	Niobrara A, Original Hole	4			10/22/2024
7,214.2	43.7	Marker Joint H, 5 1/2in; 6566.1; 5855 TVD; 21.98; 5855-5875 TVD; 6544.1-6566.1	Niobrara A, Original Hole	4			10/22/2024
7,613.2	75.1		Niobrara A, Original Hole	4			10/22/2024
7,620.1	75.9		Niobrara A, Original Hole	4			10/22/2024
7,827.1	87.1	Air Lock Sub, 5 1/2in; 7847.5; 6690.2 TVD; 1.84; 6690.2-6690.3 TVD; 7845.7-7847.5	Niobrara A, Original Hole	4			10/22/2024
7,847.4	87.1		Niobrara A, Original Hole	4			10/22/2024
8,098.1	90.3		Niobrara A, Original Hole	4			10/22/2024
8,372.0	90.4		Niobrara A, Original Hole	4			10/22/2024
8,645.0	88.5		Niobrara A, Original Hole	4			10/22/2024
8,919.0	90.0		Niobrara A, Original Hole	4			10/22/2024
9,192.9	89.5		Niobrara A, Original Hole	4			10/21/2024
9,465.9	89.9		Niobrara A, Original Hole	4			10/21/2024
9,740.2	89.9		Niobrara A, Original Hole	4			10/21/2024
10,014.1	90.0		Niobrara A, Original Hole	4			10/21/2024
10,285.1	90.2		Niobrara A, Original Hole	4			10/21/2024
10,561.0	90.4		Niobrara A, Original Hole	4			10/21/2024
10,835.0	90.2		Niobrara A, Original Hole	4			10/21/2024
11,107.9	90.0		Niobrara A, Original Hole	4			10/21/2024
11,381.9	90.3		Niobrara A, Original Hole	4			10/21/2024
11,659.1	90.0		Niobrara A, Original Hole	4			10/21/2024
11,929.1	89.9		Niobrara A, Original Hole	4			10/21/2024
12,203.1	89.7		Niobrara A, Original Hole	4			10/21/2024
12,477.0	89.7	Marker Joint G, 5 1/2in; 12626.6; 6700.3 TVD; 21.58; 6700.3-6700.5 TVD; 12605-12626.6	Niobrara A, Original Hole	4			10/21/2024
12,626.6	89.6		Niobrara A, Original Hole	4			10/21/2024
12,722.1	89.8		Niobrara A, Original Hole	4			10/21/2024
12,995.1	90.1		Niobrara A, Original Hole	4			10/21/2024
13,270.0	89.8		Niobrara A, Original Hole	4			10/21/2024
13,543.0	89.5		Niobrara A, Original Hole	4			10/21/2024
13,815.9	89.6		Niobrara A, Original Hole	4			10/21/2024
14,089.9	89.1		Niobrara A, Original Hole	4			10/21/2024
14,362.9	90.2		Niobrara A, Original Hole	4			10/21/2024
14,637.1	88.7		Niobrara A, Original Hole	4			10/21/2024
14,911.1	90.7	Casing Joints, 5 1/2in; 17403.5; 6700.6 TVD; 4,755.31; 6700.6-6747.9 TVD; 12648.1-17403.5	Niobrara A, Original Hole	4			10/21/2024
15,185.0	88.9		Niobrara A, Original Hole	4			10/21/2024
15,458.0	89.0		Niobrara A, Original Hole	4			10/21/2024
15,732.0	88.6		Niobrara A, Original Hole	4			10/21/2024
16,005.9	89.5		Niobrara A, Original Hole	4			10/21/2024
16,278.9	89.6		Niobrara A, Original Hole	4			10/20/2024
16,553.1	88.7		Niobrara A, Original Hole	4			10/20/2024
16,827.1	89.1		Niobrara A, Original Hole	4			10/20/2024
17,100.1	89.2		Niobrara A, Original Hole	4			10/20/2024
17,374.0	89.2		Niobrara A, Original Hole	4			10/20/2024
17,402.9	89.2		Niobrara A, Original Hole	4			10/20/2024
17,404.9	89.2	Landing Collar, 5 1/2in; 17428.1; 6748.2 TVD; 2.54; 6748.2-6748.2 TVD; 17425.5-17428.1	Niobrara A, Original Hole	4			10/20/2024
17,428.1	89.2	Float Collar, 5 1/2in; 17442.7; 6748.3 TVD; 3.75; 6748.3-6748.4 TVD; 17439-17442.7	Niobrara A, Original Hole	4			10/20/2024
17,442.6	89.2		Niobrara A, Original Hole	4			10/20/2024



Wellbore Schematic Input Report

Well Name: George 19NA

Original Hole [Land]			Perforation Data				
MD (ftOHT)	Incl (°)	Vertical schematic (actual)	Linked Zone	Sum of Entered Shot Total	Top (ftOHT)	Btm (ftOHT)	Date
24.9	0.4	Wellhead, 9 5/8in; 26.5; 25 TVD; 1.51; 25-26.5 TVD; 25-26.5	Niobrara A, Original Hole	4			10/20/2024
26.6	0.4	Casing Joints, 16in; 105; 25 TVD; 80.00; 25-105 TVD; 25-105	Niobrara A, Original Hole	4			10/20/2024
105.0	1.5	Casing joints, 9 5/8in; 1947.9; 31.5 TVD; 1,916.36; 31.5-1823.1 TVD; 31.6-1947.9	Niobrara A, Original Hole	4			10/20/2024
1,948.2	31.9		Niobrara A, Original Hole	4			10/20/2024
1,987.9	31.7	Casing joints, 9 5/8in; 1987.8; 1824.3 TVD; 38.43; 1824.3-1856.9 TVD; 1949.3-1987.8	Niobrara A, Original Hole	4			10/20/2024
2,000.0	31.7		Niobrara A, Original Hole	4			10/20/2024
6,544.3	25.3	Casing Joints, 5 1/2in; 6522.2; 18.6 TVD; 6,540.71; -18.6-5835.5 TVD; -18.6-6522.2	Niobrara A, Original Hole	4			10/20/2024
7,214.2	43.7	Marker Joint H, 5 1/2in; 6566.1; 5855 TVD; 21.98; 5855-5875 TVD; 6544.1-6566.1	Niobrara A, Original Hole	4			10/20/2024
7,613.2	75.1		Niobrara A, Original Hole	4			10/20/2024
7,620.1	75.9		Niobrara A, Original Hole	4			10/20/2024
7,827.1	87.1	Air Lock Sub, 5 1/2in; 7847.5; 6690.2 TVD; 1.84; 6690.2-6690.3 TVD; 7845.7-7847.5	Niobrara A, Original Hole	4			10/20/2024
7,847.4	87.1		Niobrara A, Original Hole	4			10/19/2024
8,098.1	90.3		Niobrara A, Original Hole	4			10/19/2024
8,372.0	90.4		Niobrara A, Original Hole	4			10/19/2024
8,645.0	88.5		Niobrara A, Original Hole	4			10/19/2024
8,919.0	90.0		Niobrara A, Original Hole	4			10/19/2024
9,192.9	89.5		Niobrara A, Original Hole	4			10/19/2024
9,465.9	89.9		Niobrara A, Original Hole	4			10/19/2024
9,740.2	89.9		Niobrara A, Original Hole	4			10/19/2024
10,014.1	90.0		Niobrara A, Original Hole	4			10/19/2024
10,285.1	90.2		Niobrara A, Original Hole	4			10/19/2024
10,561.0	90.4		Niobrara A, Original Hole	4			10/19/2024
10,835.0	90.2		Niobrara A, Original Hole	4			10/19/2024
11,107.9	90.0		Niobrara A, Original Hole	4			10/19/2024
11,381.9	90.3		Niobrara A, Original Hole	4			10/19/2024
11,659.1	90.0		Niobrara A, Original Hole	4			10/19/2024
11,929.1	89.9		Niobrara A, Original Hole	4			10/19/2024
12,203.1	89.7		Niobrara A, Original Hole	4			10/19/2024
12,477.0	89.7	Marker Joint G, 5 1/2in; 12626.6; 6700.3 TVD; 21.58; 6700.3-6700.5 TVD; 12605-12626.6	Niobrara A, Original Hole	4			10/19/2024
12,626.6	89.6		Niobrara A, Original Hole	4			10/19/2024
12,722.1	89.8		Niobrara A, Original Hole	4			10/19/2024
12,995.1	90.1		Niobrara A, Original Hole	4			10/19/2024
13,270.0	89.8		Niobrara A, Original Hole	4			10/19/2024
13,543.0	89.5		Niobrara A, Original Hole	12			8/11/2024
13,815.9	89.6						
14,089.9	89.1						
14,362.9	90.2						
14,637.1	88.7						
14,911.1	90.7	Casing Joints, 5 1/2in; 17403.5; 6700.6 TVD; 4,755.31; 6700.6-6747.9 TVD; 12648.1-17403.5					
15,185.0	88.9						
15,458.0	89.0						
15,732.0	88.6						
16,005.9	89.5						
16,278.9	89.6						
16,553.1	88.7						
16,827.1	89.1						
17,100.1	89.2						
17,374.0	89.2						
17,402.9	89.2	Landing Collar, 5 1/2in; 17428.1; 6748.2 TVD; 2.54; 6748.2-6748.2 TVD; 17425.5-17428.1					
17,404.9	89.2						
17,428.1	89.2	Float Collar, 5 1/2in; 17442.7; 6748.3 TVD; 3.75; 6748.3-6748.4 TVD; 17439-17442.7					
17,442.6	89.2						
Total				852			
Job Supply Amounts							
Supply Item Des		Job Supply Type	Uni...	Job Category	Total...	Total...	Total...
Daily Cost Breakdown by Category							
Field Est (Cost)		Description	Note				