





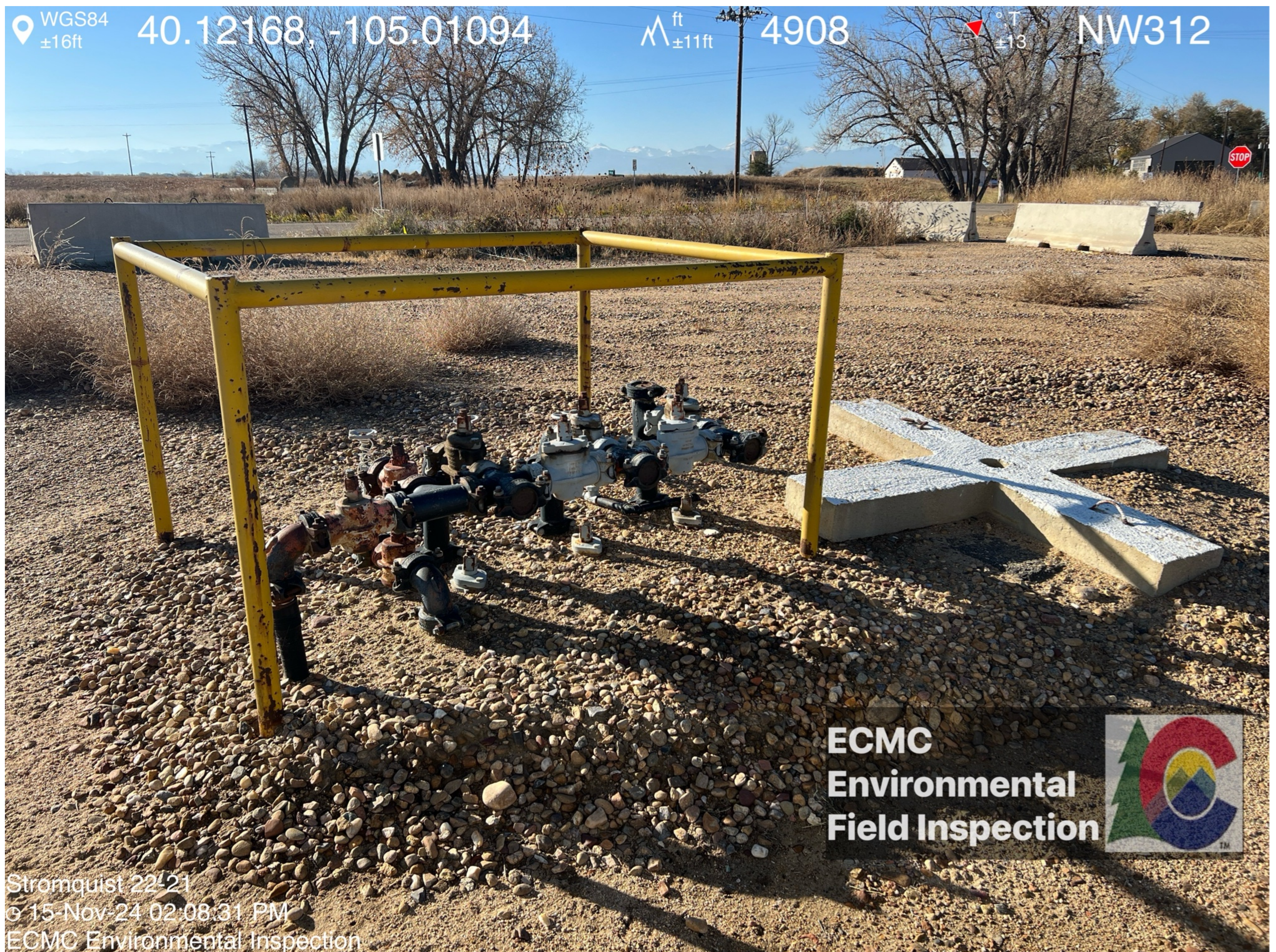
WGS84 $\pm 16\text{ft}$ 40.12151, -105.01058 $\Delta^{\text{ft}}_{\pm 11\text{ft}}$ 4909 $\nabla^{\circ, T}_{\pm 10}$ NE67

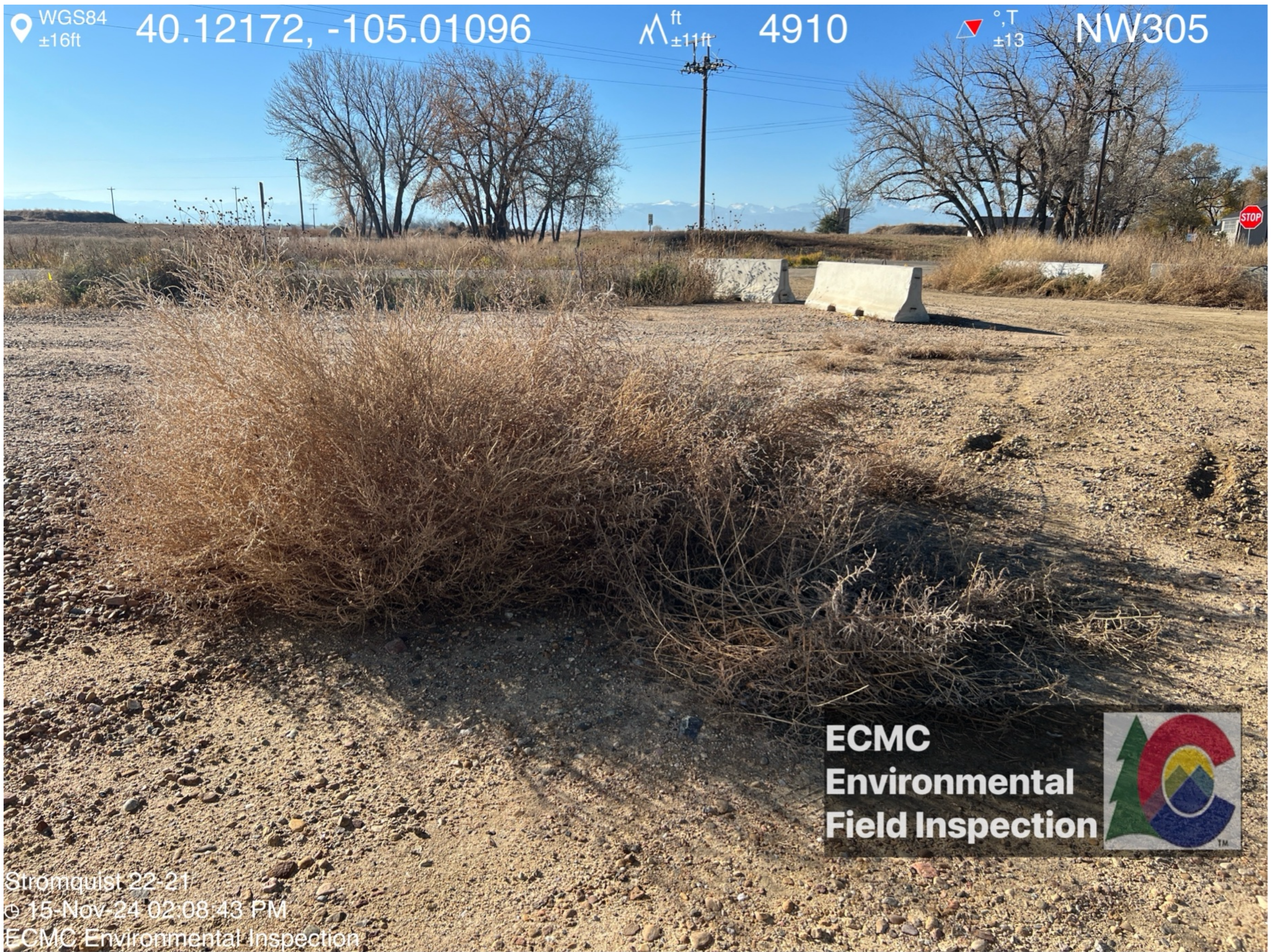


WGS84 $\pm 16\text{ft}$ 40.12143, -105.01046 $\Delta^{\text{ft}}_{\pm 11\text{ft}}$ 4908 $\nabla^{\circ, T}_{\pm 10}$ SW238









WGS84 40.12172, -105.01096 Δ ± 11 ft 4910 Δ ± 13 NW305

ECMC
Environmental
Field Inspection



Stromquist 22-21
© 15 Nov 24 02:08:43 PM
ECMC Environmental Inspection