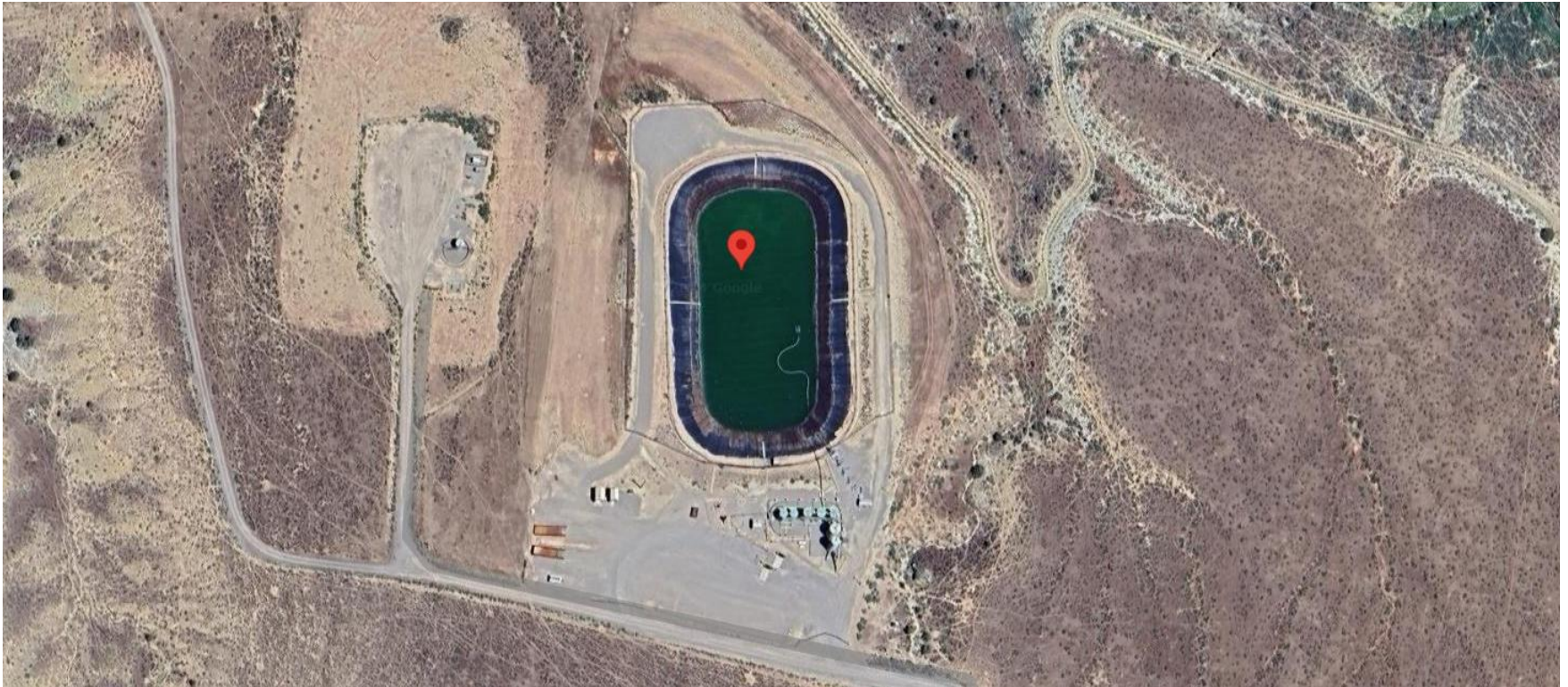


Storm Water Management and Erosion control

Location Name: TEP ROCKY MOUNTAIN LLC WASATCH BENCH WATER MGMT FACILITY

Location ID: 414907



Location Overview: Location is within High Priority/Density/Black Bear Habitat areas & in close proximity to NSO Habitat area. Location is within Rule 411a Surface Water Internal & Intermediate Buffers. Location is approximately 222 yards from Mamm Creek.

Section/Township/Range: 20 6S92W



Storm water Management and Erosion control

Location Name: TEP ROCKY MOUNTAIN LLC WASATCH BENCH WATER MGMT FACILITY

Location ID: 414907



North West corner of location.



North East corner of location.



South West corner of location.



South East corner of location.

Storm water Management and Erosion control
Location Name: TEP ROCKY MOUNTAIN LLC WASATCH BENCH WATER MGMT FACILITY
Location ID: 414907



Photo # 2032 Shed containing chemical tanks



Photo # 2033 Chemical tanks in shed lack BMP's

Storm water Management and Erosion control

Location Name: TEP ROCKY MOUNTAIN LLC WASATCH BENCH WATER MGMT FACILITY

Location ID: 414907



Photo # 2034 Stockpiled soils with BMP's