

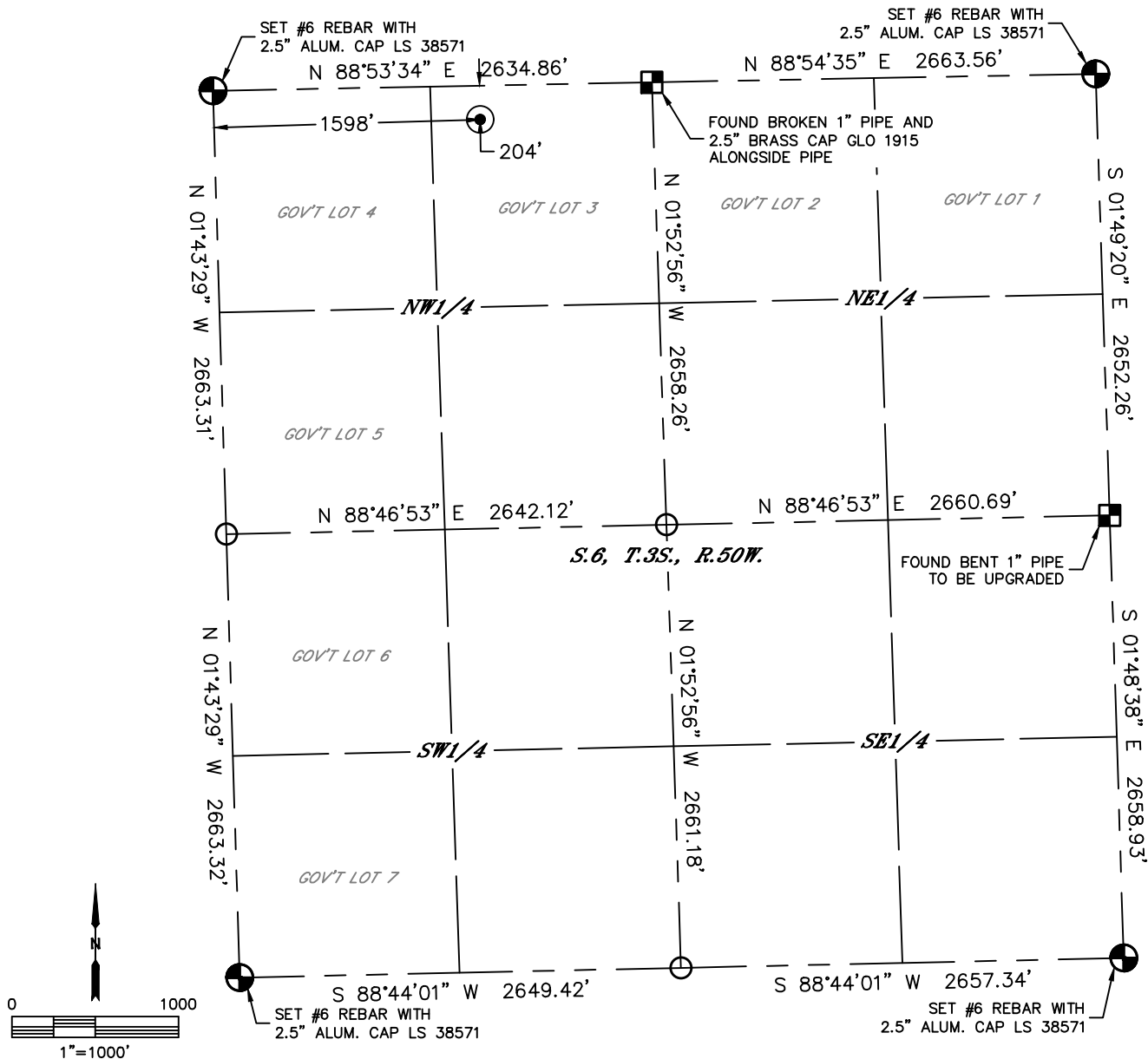


Lat40°, Inc. 6250 W. 10th Street, Unit 2, Greeley, CO 970-515-5294

WELL LOCATION CERTIFICATE

LONGKNIFE SWD 3
ST. CROIX OPERATING, INC.

Q: NENW
SECTION: 6
TOWNSHIP: 3S
RANGE: 50W
6TH. P.M.
WASHINGTON COUNTY, CO



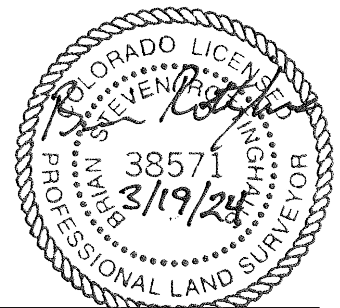
CLIENT: ST. CROIX OPERATING, INC.				LANDMAN: ANDY PETERSON			
INSTRUMENT OPERATOR: CASEY KOHOUT				SURVEY DATE: 12/20/2023		SURFACE USE: CROP LAND	
SHL FOOTAGE	SHL LAT °	SHL LONG °	SHL PDOP	SHL ELEV (FT.)	SHL 1/4/1/4	SHL S-T-R	
204	FNL 1598 FWL	39.82992	-103.02343	1.0	4563	NENW	6-3S-50

LEGEND

- = ALIQUOT MONUMENT AS DESCRIBED
- = SET ALIQUOT MONUMENT AS DESCRIBED
- = CALCULATED POSITION
- ⊙ = SURFACE HOLE LOCATION (SHL)
- ▲ = ENTRY POINT LOCATION (EP)
- ◆ = TOP OF PRODUCTIVE ZONE (PZONE)
- _{BH} = BOTTOM HOLE LOCATION (BHL)
- ⊕ = EXISTING WELL
- ⊖ = ABANDONED WELL

NOTE:

- Bearings shown are Grid Bearings of the Colorado State Plane Coordinate System, North Zone, North American Datum 1983. The lineal dimensions as contained herein are based upon the "U.S. Survey Foot."
- Distances to section lines measured at 90 degrees from said section lines.
- Ground elevations are based on an observed GPS elevation (NAVD 1988 DATUM).
- Latitude and Longitude shown are (NAD 83 DATUM).
- IMPROVEMENTS: See LOCATION DRAWING for all visible improvements.
- This map does not represent a boundary survey.



Brian S. Rottinghaus—On behalf of Lat40°, Inc.
Colorado Licensed Professional Land Surveyor No. 38571
DATE: 3/19/2024
PROJECT#: 2023468