



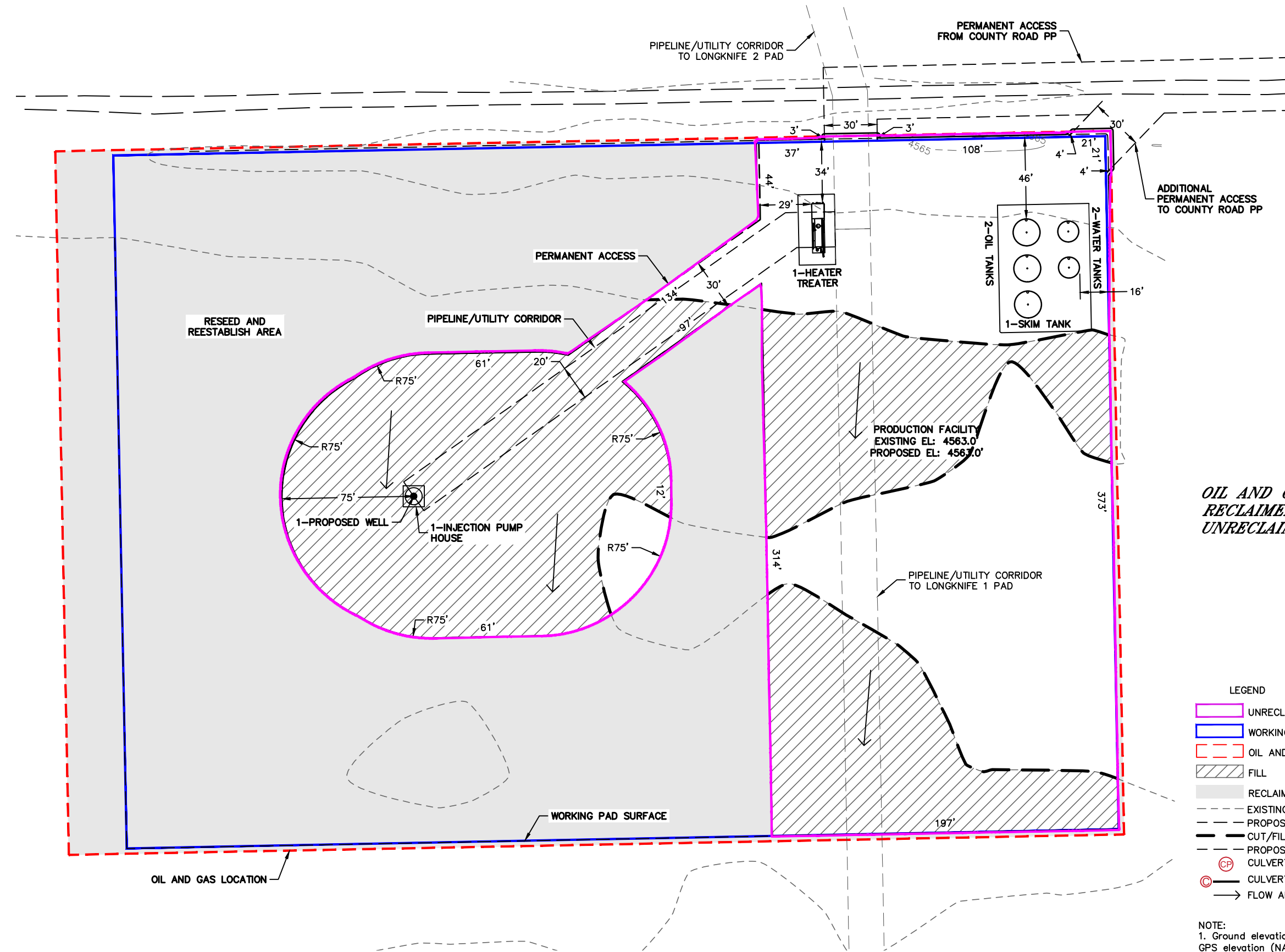
Lat40°, Inc. 6250 W. 10th Street, Unit 2, Greeley, CO 970-515-5294

OIL AND GAS FACILITIES LAYOUT DRAWING

LONGKNIFE PRODUCTION FACILITY PAD

ST. CROIX OPERATING, INC.

Q: NENW
SECTION: 6
TOWNSHIP: 3S
RANGE: 50W
6TH. P.M.
WASHINGTON COUNTY, CO



OIL AND GAS LOCATION: ±5.5 ACRES
RECLAIMED AREA: ±2.9 ACRES
UNRECLAIMED AREA: ±2.6 ACRES

- LEGEND
- UNRECLAIMED AREA
 - WORKING PAD SURFACE
 - OIL AND GAS LOCATION
 - FILL
 - RECLAIMED AREA - RESEED & REESTABLISH
 - EXISTING CONTOUR - 1' INTERVAL
 - PROPOSED CONTOUR - 1' INTERVAL
 - CUT/FILL LINE
 - PROPOSED EDGE OF GRAVEL
 - CULVERT PROTECTION
 - CULVERT
 - FLOW ARROW

NOTE:
1. Ground elevations are based on an observed GPS elevation (NAVD 1988 DATUM).
2. All equipment is PROPOSED unless otherwise noted.

