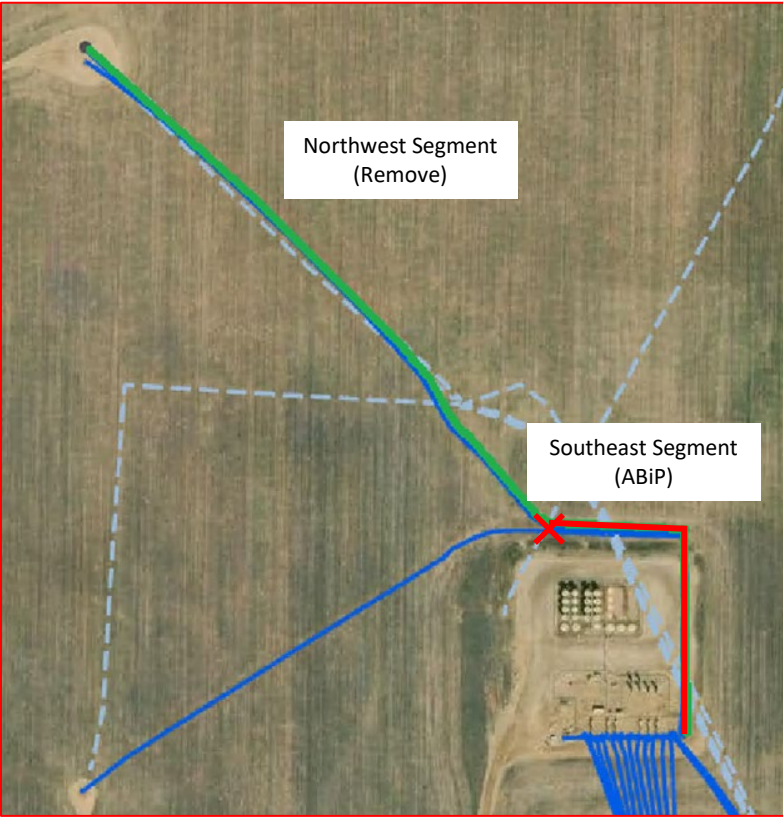


# SPRAGUE 2-4-9 (12324118\_FL): Abandon in Place Layout

40.151162, -104.902269  
NWSW Sec. 9 T2N, R67W, 6th PM  
Weld County, Colorado  
Crestone Peak Resources Operating LLC

Flowline Unique OperFeatID	Line Type	Start Location Latitude	Start Location Longitude	End Location Latitude (Cut Point)	End Location Longitude (Cut Point)	Segment Length (ft)	Segment	Abandonment Type
12324118_FL	Multiphase	40.151162	-104.902269	40.14879	-104.899249	1215	Green	Remove
12324118_FL	Multiphase	40.14879	-104.899249	40.147722	-104.898372	625	Red	ABiP



**Segment End Points**  
X Indicates where flowline abandonment type changes