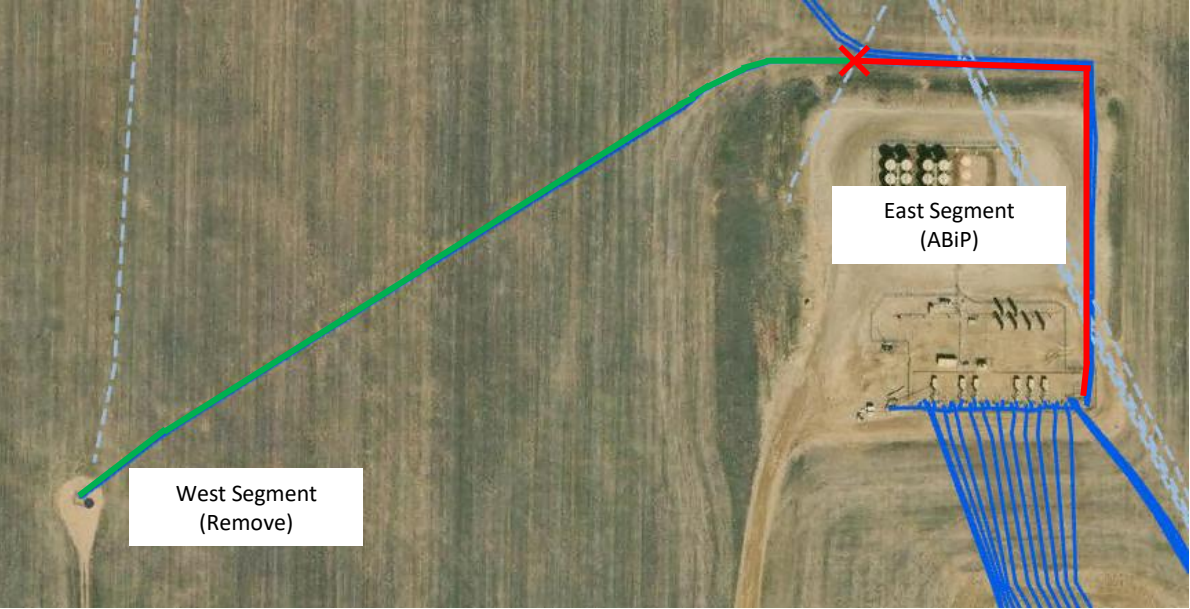


SPRAGUE 14-9 (12324905_FL): Abandon in Place Layout

40.147430, -104.902260
SWSW Sec. 9 T2N, N67W, 6th PM
Weld County, Colorado
Crestone Peak Resources Operating LLC (10633)

Flowline Unique OperFeatID	Line Type	Start Location Latitude	Start Location Longitude	End Location Latitude (Cut Point)	End Location Longitude (Cut Point)	Segment Length (ft)	Segment	Abandonment Type
12324905_FL	Multiphase	40.147430	-104.902260	40.148746	-104.899276	980	Green	Remove
12324905_FL	Multiphase	40.148746	-104.899276	40.147742	-104.89838	610	Red	ABiP



Segment End Points
X Indicates where flowline abandonment type changes