

**Beeman Oil & Gas Inc**  
**Welker 6-92 1-2H11**  
**Location ID: 438580**



**When replaced additional information will be required**



**Debris**





Beeman Oil & Gas Inc  
Welker 6-92 1-2H11  
Location ID: 438580



When replaced additional information will be required

Debris



**COLORADO**  
Energy & Carbon Management  
Commission  
Department of Natural Resources



Beeman Oil & Gas Inc  
Welker 6-92 1-2H11  
Location ID: 438580



Open to wildlife



Debris

Beeman Oil & Gas Inc  
Welker 6-92 1-2H11  
Location ID: 438580



**Open to wildlife**



**Debris**



Beeman Oil & Gas Inc  
Welker 6-92 1-2H11  
Location ID: 438580



**Needs designated label**



**Debris**

Beeman Oil & Gas Inc  
Welker 6-92 1-2H11  
Location ID: 438580



**Open to wildlife**



**Vent riser missing cap**





Beeman Oil & Gas Inc  
Welker 6-92 1-2H11  
Location ID: 438580



**Faded and illegible label**



**Open to wildlife**

Beeman Oil & Gas Inc  
Welker 6-92 1-2H11  
Location ID: 438580



Debris



Debris



Beeman Oil & Gas Inc  
Welker 6-92 1-2H11  
Location ID: 438580



Tank battery sign missing required information



Oily waste and staining

Beeman Oil & Gas Inc  
Welker 6-92 1-2H11  
Location ID: 438580



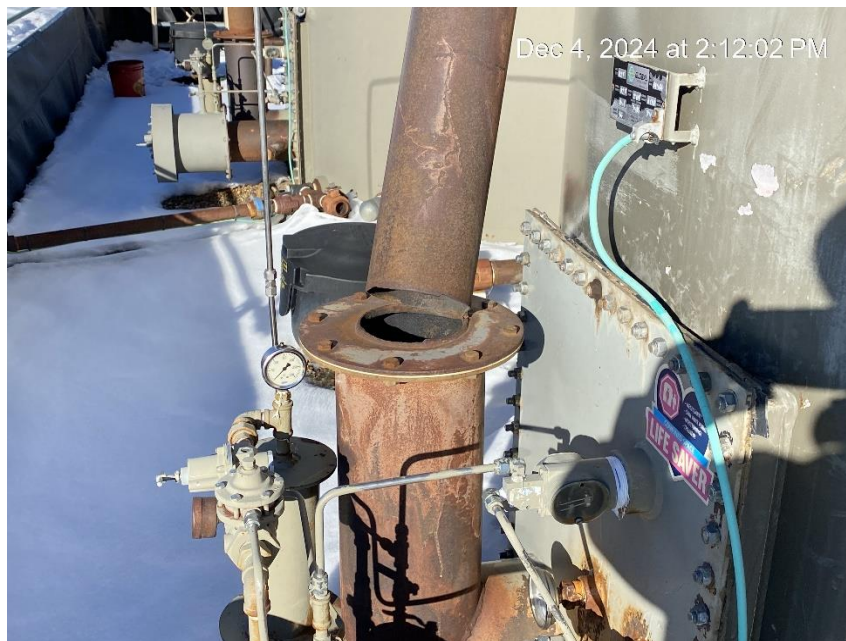
**Debris. Open to wildlife.**



**Open end load line. Line is double valved.**



Beeman Oil & Gas Inc  
Welker 6-92 1-2H11  
Location ID: 438580



Open to wildlife



Debris

**Beeman Oil & Gas Inc**  
**Welker 6-92 1-2H11**  
**Location ID: 438580**



**Location from Southeast corner**



**Location from Southwest corner**



**Beeman Oil & Gas Inc**  
**Welker 6-92 1-2H11**  
**Location ID: 438580**



**Location from Northwest corner**



**Location from Northeast corner**