

# Aristocrat Angus 32-4, Aristocrat Angus 32-4C Common Line (1231657312309333\_FL): Partial Abandon in Place Layout

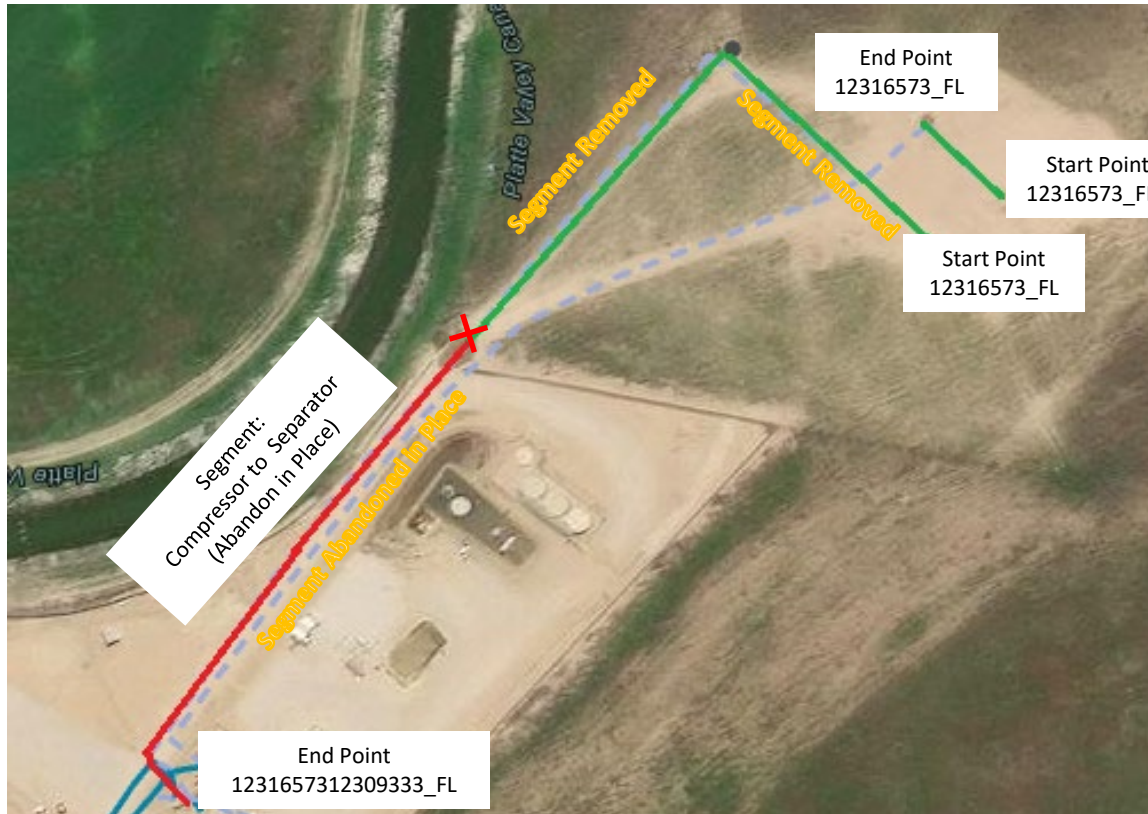
40.256167, -104.665961

SWNE Sec. 4 T3N, R65W, 6th PM

Weld County, Colorado

Crestone Peak Resources (10633)

Flowline Unique OperFeatID		Line Type	Start Location Latitude	Start Location Longitude	End Location Latitude (Cut Point)	End Location Longitude (Cut Point)	Segment Length (ft)	Segment	Abandonment Type
12316573_FL	Aristocrat Angus 4-2-4	Multiphase	40.25569	-104.666318	40.255829	-104.666141	70	Green	Removed
12316573_FL	Aristocrat Angus AA 32-4C	Multiphase	40.255791	-104.666417	40.256167	-104.665961	190	Green	Removed
1231657312309333_FL	Aristocrat Angus 32-4, Aristocrat Angus 32-4C Common Line	Multiphase	40.256167	-104.665961	40.256628	-104.666647	245	Green	Removed
1231657312309333_FL	Aristocrat Angus 32-4, Aristocrat Angus 32-4C Common Line	Multiphase	40.256628	-104.666647	40.257132	-104.667773	395	Red	Abandoned in Place



**Segment End Points**

✗ Indicates where flowline abandonment type changes