

TABLE 1
FIELD DATA SUMMARY TABLE
PDC ENERGY, INC. - 69175
DUNHAM 41-5 TANK BATTERY, WELD COUNTY, COLORADO
REM # 36700

Sample ID	Sample Date	Depth (ft. bgs)	GPS Data Latitude/Longitude		PDOP Value	VOC Concentration (ppm)
MH01@0-6"	09/05/24	0-0.5	40.087381	-104.455318	0.8	0.2
FLARE01@0-6"	09/05/24	0-0.5	40.087311	-104.455352	0.8	0.3
AST01@0-6"	09/05/24	0-0.5	40.087346	-104.454973	0.9	0.2
SEP01-FL@3'	09/05/24	3	40.087331	-104.455320	0.8	0.5
SEP01-DL-B@3'	09/05/24	3	40.087352	-104.455257	1	0.1
SEP01-DL-N@1.5'	09/05/24	1.5	40.087359	-104.455258	0.9	0.1
SEP01-DL-S@1.5'	09/05/24	1.5	40.087346	-104.455256	0.9	0.3
SEP01-DL-E@1.5'	09/05/24	1.5	40.087353	-104.455244	1	0.2
SEP01-DL-W@1.5'	09/05/24	1.5	40.087351	-104.455270	0.9	0.1
VRU01@0-6"	09/05/24	0-0.5	40.087322	-104.455017	1	0.3
BKG01@0-6"	09/05/24	0-0.5	40.086290	-104.454490	0.9	0.0
BKG01@1.5'	09/05/24	1.5	40.086290	-104.454490	0.9	0.0
BKG01@3'	09/05/24	3	40.086290	-104.454490	0.9	0.0
SEP01-DL-BR@3-4'	11/27/24	3-4	40.087347	-104.455253	1.1	0.8
SEP01-DL-BR@4-5'	11/27/24	4-5	40.087347	-104.455253	1.1	0.6
SEP01-DL-ER@3-4'	11/27/24	3-4	40.087349	-104.455243	1.4	0.5
SEP01-DL-ER@4-5'	11/27/24	4-5	40.087349	-104.455243	1.4	0.4
SEP01-DL-NR@3-4'	11/27/24	3-4	40.087357	-104.455254	1.2	0.3
SEP01-DL-NR@4-5'	11/27/24	4-5	40.087357	-104.455254	1.2	0.0
SEP01-DL-SR@3-4'	11/27/24	3-4	40.087342	-104.455254	1.1	0.5
SEP01-DL-SR@4-5'	11/27/24	4-5	40.087342	-104.455254	1.1	0.5
SEP01-DL-WR@3-4'	11/27/24	3-4	40.087350	-104.455265	1.1	1.2
SEP01-DL-WR@4-5'	11/27/24	4-5	40.087350	-104.455265	1.1	1.8

Sample ID	Sample Date	Depth (ft. bgs)	GPS Data		PDOP Value	VOC Concentration (ppm)
			Latitude/Longitude			
BKG02@0-1'	11/27/24	0-1	40.087442	-104.455406	1.0	2.2
BKG02@2-3'	11/27/24	2-3	40.087442	-104.455406	1.0	1.6
BKG02@3-4'	11/27/24	3-4	40.087442	-104.455406	1.0	0.7
BKG02@4-5'	11/27/24	4-5	40.087442	-104.455406	1.0	0.7
BKG03@0-1'	11/27/24	0-1	40.087128	-104.455025	1.1	0.1
BKG03@2-3'	11/27/24	2-3	40.087128	-104.455025	1.1	0.3
BKG03@3-4'	11/27/24	3-4	40.087128	-104.455025	1.1	0.3
BKG03@4-5'	11/27/24	4-5	40.087128	-104.455025	1.1	0.3
BKG04@0-1'	11/27/24	0-1	40.087209	-104.455100	1.1	0.1
BKG04@2-3'	11/27/24	2-3	40.087209	-104.455100	1.1	0.0
BKG04@3-4'	11/27/24	3-4	40.087209	-104.455100	1.1	0.2
BKG04@4-5'	11/27/24	4-5	40.087209	-104.455100	1.1	0.0
BKG05@0-1'	11/27/24	0-1	40.087199	-104.454959	1.3	0.0
BKG05@2-3'	11/27/24	2-3	40.087199	-104.454959	1.3	0.1
BKG05@3-4'	11/27/24	3-4	40.087199	-104.454959	1.3	0.0
BKG05@4-5'	11/27/24	4-5	40.087199	-104.454959	1.3	0.0
BKG06@0-1'	11/27/24	0-1	40.087510	-104.455459	1.0	0.0
BKG06@2-3'	11/27/24	2-3	40.087510	-104.455459	1.0	0.0
BKG06@3-4'	11/27/24	3-4	40.087510	-104.455459	1.0	0.0
BKG06@4-5'	11/27/24	4-5	40.087510	-104.455459	1.0	0.0

Notes:

1. Global Positioning System (GPS) data is provided in decimal degrees using North American Datum (NAD) 83 UTMZone 13 North.
2. Volatile organic compound (VOC) concentrations are measured in the field using a photoionization detector (PID).

PDOP = Position Dilution of Precision

ppm = Parts per million

ft. = Feet

bgs = Below ground surface

TABLE 2
SUMMARY OF VOLATILE ORGANIC SOIL CHEMISTRY DATA
PDC ENERGY, INC. - 69175
DUNHAM 41-5 TANK BATTERY, WELD COUNTY, COLORADO
REM # 36700

Sample ID	Sample Date	Depth (ft. bgs)	Benzene (mg/kg)	Toluene (mg/kg)	Ethyl-Benzene (mg/kg)	Xylenes (mg/kg)	1,2,4-Trimethyl-Benzene (mg/kg)	1,3,5-Trimethyl-Benzene (mg/kg)	Naphthalene (mg/kg)	TPH (mg/kg)	TPH GRO (mg/kg)	TPH DRO (mg/kg)	TPH ORO (mg/kg)
ECMC Table 915-1 Limits (Residential SSL)			1.2	490	5.8	58	30	27	2	500	500**		
ECMC Table 915-1 Limits (Protection of Groundwater SSL)			0.0026	0.69	0.78	9.9	0.0081	0.0087	0.0038	500	500**		
AST01@0-6"	09/05/24	0-0.5	<0.0020	<0.0050	<0.0050	<0.010	<0.0050	<0.0050	<0.0038	<50	<0.50	<50	<50
SEP01-FL@3'	09/05/24	3	<0.0020	<0.0050	<0.0050	<0.010	<0.0050	<0.0050	<0.0038	<50	<0.50	<50	<50
SEP01-DL-B@3'	09/05/24	3	<0.0020	<0.0050	<0.0050	<0.010	<0.0050	<0.0050	<0.0038	<50	<0.50	<50	<50
SEP01-DL-S@1.5'	09/05/24	1.5	<0.0020	<0.0050	<0.0050	<0.010	<0.0050	<0.0050	<0.0038	<50	<0.50	<50	<50
SEP01-DL-BR@3-4'	11/27/24	3-4	<0.0020	<0.0050	<0.0050	<0.010	<0.0050	<0.0050	<0.0038	<50	<0.50	<50	<50
SEP01-DL-BR@4-5'	11/27/24	4-5	<0.0020	<0.0050	<0.0050	<0.010	<0.0050	<0.0050	<0.0038	<50	<0.50	<50	<50
SEP01-DL-ER@3-4'	11/27/24	3-4	<0.0020	<0.0050	<0.0050	<0.010	<0.0050	<0.0050	<0.0038	<50	<0.50	<50	<50
SEP01-DL-ER@4-5'	11/27/24	4-5	<0.0020	<0.0050	<0.0050	<0.010	<0.0050	<0.0050	<0.0038	<50	<0.50	<50	<50
SEP01-DL-NR@3-4'	11/27/24	3-4	<0.0020	<0.0050	<0.0050	<0.010	<0.0050	<0.0050	<0.0038	<50	<0.50	<50	<50
SEP01-DL-NR@4-5'	11/27/24	4-5	<0.0020	<0.0050	<0.0050	<0.010	<0.0050	<0.0050	<0.0038	<50	<0.50	<50	<50
SEP01-DL-SR@3-4'	11/27/24	3-4	<0.0020	<0.0050	<0.0050	<0.010	<0.0050	<0.0050	<0.0038	<50	<0.50	<50	<50
SEP01-DL-SR@4-5'	11/27/24	4-5	<0.0020	<0.0050	<0.0050	<0.010	<0.0050	<0.0050	<0.0038	<50	<0.50	<50	<50
SEP01-DL-WR@3-4'	11/27/24	3-4	<0.0020	<0.0050	<0.0050	<0.010	<0.0050	<0.0050	<0.0038	<50	<0.50	<50	<50
SEP01-DL-WR@4-5'	11/27/24	4-5	<0.0020	<0.0050	<0.0050	<0.010	<0.0050	<0.0050	<0.0038	<50	<0.50	<50	<50

Notes:

1. **Bold** values exceed the ECMC Table 915-1 limit(s).
2. Pink & blue highlighted soil analytical values indicate an exceedance of the referenced soil screening level (SSL).
3. * Indicates laboratory minimum detection limit in excess of SSL.
3. ** Summation of GRO+DRO+ORO must be less than 500 mg/kg.

ECMC = Energy & Carbon Management Commission

(<) = Analytical result is less than the indicated laboratory reporting limit.

TPH-GRO = Total petroleum hydrocarbons - gasoline range organics

TPH-DRO = Total petroleum hydrocarbons - diesel range organics

TPH-ORO = Total petroleum hydrocarbons - oil range organics

mg/kg = Milligrams per kilogram

ft. = Feet

bgs = Below ground surface

TABLE 3
SUMMARY OF POLYCYCLIC AROMATIC HYDROCARBON SOIL CHEMISTRY DATA
PDC ENERGY, INC. - 69175
DUNHAM 41-5 TANK BATTERY, WELD COUNTY, COLORADO
REM # 36700

Sample ID	Sample Date	Depth (ft. bgs)	Acenaphthene (mg/kg)	Anthracene (mg/kg)	Benzo (a) Anthracene (mg/kg)	Benzo (a) Pyrene (mg/kg)	Benzo (b) Fluoranthene (mg/kg)	Benzo (k) Fluoranthene (mg/kg)	Chrysene (mg/kg)	Dibenzo (a,h) Anthracene (mg/kg)	Fluoranthene (mg/kg)	Fluorene (mg/kg)	Indeno (1,2,3-cd) Pyrene (mg/kg)	Pyrene (mg/kg)	1-Methyl - Naphthalene (mg/kg)	2-Methyl- Naphthalene (mg/kg)
ECMC Table 915-1 Limits (Residential SSL)			360	1,800	1.1	0.11	1.1	11	110	0.11	240	240	1.1	180	18	24
ECMC Table 915-1 Limits (Protection of Groundwater SSL)			0.55	5.8	0.011	0.24	0.3	2.9	9	0.096	8.9	0.54	0.98	1.3	0.006	0.019
AST01@0-6"	09/05/24	0-0.5	<0.00500	<0.00500	<0.00500	<0.00500	<0.00500	<0.00500	<0.00500	<0.00500	<0.00500	<0.00500	<0.00500	<0.00500	<0.00500	<0.00500
SEP01-FL@3'	09/05/24	3	<0.00500	<0.00500	<0.00500	<0.00500	<0.00500	<0.00500	<0.00500	<0.00500	<0.00500	<0.00500	<0.00500	<0.00500	<0.00500	<0.00500
SEP01-DL-B@3' ^[3]	09/05/24	3	<0.00500	<0.00500	<0.00500	<0.00500	<0.00500	<0.00500	<0.00500	<0.00500	<0.00500	<0.00500	<0.00500	<0.00500	0.00880	0.0126
SEP01-DL-B@3' ^[4]	09/05/24	3	<0.00500	<0.00500	<0.00500	<0.00500	<0.00500	<0.00500	<0.00500	<0.00500	<0.00500	<0.00500	<0.00500	<0.00500	<0.00500	<0.00500
SEP01-DL-S@1.5'	09/05/24	1.5	<0.00500	<0.00500	<0.00500	<0.00500	<0.00500	<0.00500	<0.00500	<0.00500	<0.00500	<0.00500	<0.00500	<0.00500	<0.00500	<0.00500
SEP01-DL-BR@3-4'	11/27/24	3-4	<0.00500	<0.00500	<0.00500	<0.00500	<0.00500	<0.00500	<0.00500	<0.00500	<0.00500	<0.00500	<0.00500	<0.00500	<0.00500	<0.00500
SEP01-DL-BR@4-5'	11/27/24	4-5	<0.00500	<0.00500	<0.00500	<0.00500	<0.00500	<0.00500	<0.00500	<0.00500	<0.00500	<0.00500	<0.00500	<0.00500	<0.00500	<0.00500
SEP01-DL-ER@3-4'	11/27/24	3-4	<0.00500	<0.00500	<0.00500	<0.00500	<0.00500	<0.00500	<0.00500	<0.00500	<0.00500	<0.00500	<0.00500	<0.00500	<0.00500	<0.00500
SEP01-DL-ER@4-5'	11/27/24	4-5	<0.00500	<0.00500	<0.00500	<0.00500	<0.00500	<0.00500	<0.00500	<0.00500	<0.00500	<0.00500	<0.00500	<0.00500	<0.00500	<0.00500
SEP01-DL-NR@3-4'	11/27/24	3-4	<0.00500	<0.00500	<0.00500	<0.00500	<0.00500	<0.00500	<0.00500	<0.00500	<0.00500	<0.00500	<0.00500	<0.00500	<0.00500	<0.00500
SEP01-DL-NR@4-5'	11/27/24	4-5	<0.00500	<0.00500	<0.00500	<0.00500	<0.00500	<0.00500	<0.00500	<0.00500	<0.00500	<0.00500	<0.00500	<0.00500	<0.00500	<0.00500
SEP01-DL-SR@3-4'	11/27/24	3-4	<0.00500	<0.00500	<0.00500	<0.00500	<0.00500	<0.00500	<0.00500	<0.00500	<0.00500	<0.00500	<0.00500	<0.00500	<0.00500	<0.00500
SEP01-DL-SR@4-5'	11/27/24	4-5	<0.00500	<0.00500	<0.00500	<0.00500	<0.00500	<0.00500	<0.00500	<0.00500	<0.00500	<0.00500	<0.00500	<0.00500	<0.00500	<0.00500
SEP01-DL-WR@3-4'	11/27/24	3-4	<0.00500	<0.00500	<0.00500	<0.00500	<0.00500	<0.00500	<0.00500	<0.00500	<0.00500	<0.00500	<0.00500	<0.00500	<0.00500	<0.00500
SEP01-DL-WR@4-5'	11/27/24	4-5	<0.00500	<0.00500	<0.00500	<0.00500	<0.00500	<0.00500	<0.00500	<0.00500	<0.00500	<0.00500	<0.00500	<0.00500	<0.00500	<0.00500

Notes:

1. **Bold** values exceed the ECMC Table 915-1 limit(s).
2. Pink & blue highlighted soil analytical values indicate an exceedance of the referenced soil screening level (SSL).
3. Batch ID #BHI0159, Lab Report 2409063
4. Batch ID #BHI0425, Lab Report 2409063R

ECMC = Colorado Energy & Carbon Management Commission

(<) = Analytical result is less than the indicated laboratory reporting limit.

ft. = Feet

bgs = Below ground surface

mg/kg = Milligrams per kilogram

TABLE 4
SUMMARY OF SOIL SUITABILITY FOR RECLAMATION
PDC ENERGY, INC. - 69175
DUNHAM 41-5 TANK BATTERY, WELD COUNTY, COLORADO
REM # 36700

Sample ID	Sample Date	Depth (ft. bgs)	pH (Standard Units)	EC (mmhos/cm)	SAR (Standard Units)	Boron (mg/L)
ECMC Table 915-1 Soil Suitability Limits			6 - 8.3	<4	<6	2
AST01@0-6"	09/05/24	0-0.5	7.98	0.492	0.930	<2.00
SEP01-FL@3'	09/05/24	3	8.59	0.398	3.26	<2.00
SEP01-DL-B@3'	09/05/24	3	8.23	0.247	0.0942	<2.00
SEP01-DL-S@1.5'	09/05/24	1.5	8.38	0.143	0.0358	<2.00
SEP01-DL-BR@3-4'	11/27/24	3-4	RP	RP	1.45	<2.00
SEP01-DL-BR@4-5'	11/27/24	4-5	RP	RP	1.34	<2.00
SEP01-DL-ER@3-4'	11/27/24	3-4	RP	RP	1.42	<2.00
SEP01-DL-ER@4-5'	11/27/24	4-5	RP	RP	1.31	<2.00
SEP01-DL-NR@3-4'	11/27/24	3-4	RP	RP	1.05	<2.00
SEP01-DL-NR@4-5'	11/27/24	4-5	RP	RP	0.802	<2.00
SEP01-DL-SR@3-4'	11/27/24	3-4	RP	RP	1.14	<2.00
SEP01-DL-SR@4-5'	11/27/24	4-5	RP	RP	1.80	<2.00
SEP01-DL-WR@3-4'	11/27/24	3-4	RP	RP	0.312	<2.00
SEP01-DL-WR@4-5'	11/27/24	4-5	RP	RP	0.124	<2.00
BKG01@0-6"	09/05/24	0-0.5	8.34	0.279	1.10	<2.00
BKG01@1.5'	09/05/24	1.5	7.93	4.62	6.51	3.24
BKG01@3'	09/05/24	3	8.20	10.2	24.9	<2.00
BKG02@0-1'	11/27/24	0-1	RP	RP	0.372	<2.00
BKG02@2-3'	11/27/24	2-3	RP	RP	9.22	<2.00
BKG02@3-4'	11/27/24	3-4	RP	RP	21.6	<2.00
BKG02@4-5'	11/27/24	4-5	RP	RP	11.3	<2.00
BKG03@0-1'	11/27/24	0-1	RP	RP	0.181	<2.00
BKG03@2-3'	11/27/24	2-3	RP	RP	8.67	<2.00

Sample ID	Sample Date	Depth (ft. bgs)	pH (Standard Units)	EC (mmhos/cm)	SAR (Standard Units)	Boron (mg/L)
ECMC Table 915-1 Soil Suitability Limits			6 - 8.3	<4	<6	2
BKG03@3-4'	11/27/24	3-4	RP	RP	13.0	<2.00
BKG03@4-5'	11/27/24	4-5	RP	RP	0.840	<2.00
BKG04@0-1'	11/27/24	0-1	RP	RP	0.387	<2.00
BKG04@2-3'	11/27/24	2-3	RP	RP	25.0	<2.00
BKG04@3-4'	11/27/24	3-4	RP	RP	14.9	<2.00
BKG04@4-5'	11/27/24	4-5	RP	RP	7.98	<2.00
BKG05@0-1'	11/27/24	0-1	RP	RP	1.35	<2.00
BKG05@2-3'	11/27/24	2-3	RP	RP	18.1	<2.00
BKG05@3-4'	11/27/24	3-4	RP	RP	15.0	<2.00
BKG05@4-5'	11/27/24	4-5	RP	RP	7.72	<2.00
BKG06@0-1'	11/27/24	0-1	RP	RP	0.152	<2.00
BKG06@2-3'	11/27/24	2-3	RP	RP	0.964	<2.00
BKG06@3-4'	11/27/24	3-4	RP	RP	4.64	<2.00
BKG06@4-5'	11/27/24	4-5	RP	RP	5.77	<2.00
Maximum Root Background Concentration (0 - 3 ft)			8.34	-	-	-
Mean Root Background Concentration (0 - 3 ft)			8.16	-	-	-
Maximum Background Concentration			8.34	-	-	-
Mean Background Concentration			8.16	-	-	-

Notes:

1. **Bold** faced values exceed the ECMC Table 915-1 limit(s), but are within background concentrations.
2. **Bold** faced values exceed the ECMC Table 915-1 limit(s) and native background concentrations.
3. Brown highlighted soil analytical values indicate a regulatory exceedance.

ECMC = Colorado Energy & Carbon Management Commission

EC = Electrical conductivity

SAR = Sodium adsorption ratio

mmhos/cm = millimhos per centimeter

mg/L = milligram per liter

(<) = Analytical result is less than the indicated laboratory reporting limit.

ft. = Feet

bgs = Below ground surface

RP = Results pending

TABLE 5
SUMMARY OF METALS IN SOIL CHEMISTRY DATA
PDC ENERGY, INC. - 69175
DUNHAM 41-5 TANK BATTERY, WELD COUNTY, COLORADO
REM # 36700

Sample ID	Sample Date	Depth (ft. bgs)	Arsenic (mg/kg)	Barium (mg/kg)	Cadmium (mg/kg)	Chromium (VI) ^[4] (mg/kg)	Copper (mg/kg)	Lead (mg/kg)	Nickel (mg/kg)	Selenium (mg/kg)	Silver (mg/kg)	Zinc (mg/kg)
ECMC Table 915-1 Limits (Residential SSL)			0.68	15,000	71	0.3	3,100	400	1,500	390	390	23,000
ECMC Table 915-1 Limits (Protection of Groundwater SSL)			0.29	82	0.38	0.00067	46	14	26	0.26	0.8	370
AST01@0-6"	09/05/24	0-0.5	1.95	31.4	<0.200	<0.30*	5.45	2.96	3.62	<0.260	<0.0200	12.9
SEP01-FL@3'	09/05/24	3	3.08	84.9	0.450	<0.30*	9.16	9.47	8.74	<0.260	0.0328	32.2
SEP01-DL-B@3'	09/05/24	3	3.42	67.4	<0.200	<0.30*	7.91	14.5	6.98	<0.260	0.0265	26.8
SEP01-DL-S@1.5'	09/05/24	1.5	2.83	76.7	<0.200	<0.30*	8.28	6.89	7.69	<0.260	0.0279	26.7
SEP01-DL-BR@3-4'	11/27/24	3-4	4.50	171	0.345	<0.30*	6.39	11.1	6.59	<0.260	0.0643	24.0
SEP01-DL-BR@4-5'	11/27/24	4-5	3.92	133	0.308	<0.30*	6.13	9.86	6.33	<0.260	0.0588	22.3
SEP01-DL-ER@3-4'	11/27/24	3-4	5.05	300	0.406	<0.30*	6.61	11.4	7.25	<0.260	0.0602	24.3
SEP01-DL-ER@4-5'	11/27/24	4-5	3.59	132	0.265	<0.30*	5.91	8.30	5.96	<0.260	0.0427	21.1
SEP01-DL-NR@3-4'	11/27/24	3-4	4.72	92.2	0.342	<0.30*	6.76	11.3	6.89	<0.260	0.0618	24.4
SEP01-DL-NR@4-5'	11/27/24	4-5	4.40	116	0.332	<0.30*	6.45	10.5	6.89	<0.260	0.0563	24.4
SEP01-DL-SR@3-4'	11/27/24	3-4	3.63	96.9	0.269	<0.30*	5.36	8.51	5.64	<0.260	0.0438	20.3
SEP01-DL-SR@4-5'	11/27/24	4-5	4.96	189	0.387	<0.30*	7.29	12.0	7.56	<0.260	0.0694	26.7
SEP01-DL-WR@3-4'	11/27/24	3-4	2.34	42.7	<0.200	<0.30*	4.42	4.56	3.65	<0.260	<0.0200	14.9
SEP01-DL-WR@4-5'	11/27/24	4-5	3.19	100	0.228	<0.30*	5.12	8.28	4.74	<0.260	0.0498	20.2
BKG01@0-6"	09/05/24	0-0.5	3.09	90.8	0.267	<0.30*	9.47	9.94	8.89	<0.260	0.0410	32.8
BKG01@1.5'	09/05/24	1.5	3.56	118	0.264	<0.30*	11.2	9.12	12.7	<0.260	0.0375	35.4
BKG01@3'	09/05/24	3	2.42	73.6	<0.200	<0.30*	5.97	5.79	5.86	<0.260	0.0305	21.0
BKG02@0-1'	11/27/24	0-1	2.77	86.0	0.276	<0.30*	4.86	8.48	4.99	<0.260	0.0294	18.1
BKG02@2-3'	11/27/24	2-3	3.35	93.8	0.283	<0.30*	5.04	7.92	5.30	<0.260	0.0350	18.0
BKG02@3-4'	11/27/24	3-4	5.77	187	0.416	<0.30*	7.50	11.5	6.93	0.263	0.157	25.5
BKG02@4-5'	11/27/24	4-5	5.03	214	0.358	<0.30*	7.11	10.8	7.19	<0.260	0.0630	24.1
BKG03@0-1'	11/27/24	0-1	3.05	96.3	0.294	<0.30*	5.27	9.44	25.3	<0.260	0.0236	19.7
BKG03@2-3'	11/27/24	2-3	3.22	78.8	0.212	<0.30*	4.76	7.71	5.42	<0.260	0.0418	18.7
BKG03@3-4'	11/27/24	3-4	5.47	184	0.310	<0.30*	5.58	9.33	6.66	<0.260	0.0514	21.4
BKG03@4-5'	11/27/24	4-5	1.45	39.7	<0.200	<0.30*	1.98	2.88	2.28	<0.260	<0.0200	7.54
BKG04@0-1'	11/27/24	0-1	2.88	103	0.259	<0.30*	5.74	8.86	5.72	<0.260	0.0407	18.9
BKG04@2-3'	11/27/24	2-3	4.03	101	0.271	<0.30*	5.33	8.49	6.37	<0.260	0.0486	19.8
BKG04@3-4'	11/27/24	3-4	3.62	173	0.256	<0.30*	5.18	8.21	5.83	<0.260	0.0408	20.2
BKG04@4-5'	11/27/24	4-5	2.40	102	<0.200	<0.30*	3.51	5.49	3.63	<0.260	0.0230	14.0

Sample ID	Sample Date	Depth (ft. bgs)	Arsenic (mg/kg)	Barium (mg/kg)	Cadmium (mg/kg)	Chromium (VI) ^[4] (mg/kg)	Copper (mg/kg)	Lead (mg/kg)	Nickel (mg/kg)	Selenium (mg/kg)	Silver (mg/kg)	Zinc (mg/kg)
ECMC Table 915-1 Limits (Residential SSL)			0.68	15,000	71	0.3	3,100	400	1,500	390	390	23,000
ECMC Table 915-1 Limits (Protection of Groundwater SSL)			0.29	82	0.38	0.00067	46	14	26	0.26	0.8	370
BKG05@0-1'	11/27/24	0-1	3.05	96.3	0.311	<0.30*	5.38	9.39	5.14	<0.260	0.0370	19.8
BKG05@2-3'	11/27/24	2-3	4.15	92.9	0.244	<0.30*	5.52	8.84	5.77	<0.260	0.0517	21.1
BKG05@3-4'	11/27/24	3-4	3.38	79.9	<0.200	<0.30*	4.26	6.42	4.83	<0.260	0.0286	15.9
BKG05@4-5'	11/27/24	4-5	3.42	124	0.331	<0.30*	5.90	9.89	6.05	<0.260	0.0847	22.4
BKG06@0-1'	11/27/24	0-1	3.49	108	0.343	<0.30*	5.88	11.4	5.76	<0.260	0.0443	21.9
BKG06@2-3'	11/27/24	2-3	3.16	87.6	0.271	<0.30*	4.94	8.66	5.89	<0.260	0.0494	18.9
BKG06@3-4'	11/27/24	3-4	4.47	108	0.254	<0.30*	5.77	9.55	6.59	<0.260	0.0452	21.5
BKG06@4-5'	11/27/24	4-5	3.63	221	0.307	<0.30*	5.56	9.25	6.13	<0.260	0.0452	21.0
Maximum Background Concentration			5.77	221	0.416	-	-	11.5	-	-	-	-
Maximum Background Concentration X 1.25			7.21	276	0.520	-	-	14.4	-	-	-	-
Mean Background Concentration			3.52	116	0.291	-	-	8.58	-	-	-	-
Mean Background Concentration X 1.25			4.39	144	0.364	-	-	10.7	-	-	-	-

Notes:

1. **Bold** faced values exceed the ECMC Table 915-1 limit(s), but are within 1.25x background concentrations.
2. **Bold** faced values exceed the ECMC Table 915-1 limit(s) and native background concentrations.
3. Pink & blue highlighted soil analytical values indicate an exceedance of the referenced soil screening level (SSL).
4. Compound falls within ECMC Table 915-1 Footnote 9.
5. Non-detect background results accounted for in the highest background concentration by using the reporting limit.

ECMC = Energy & Carbon Management Commission

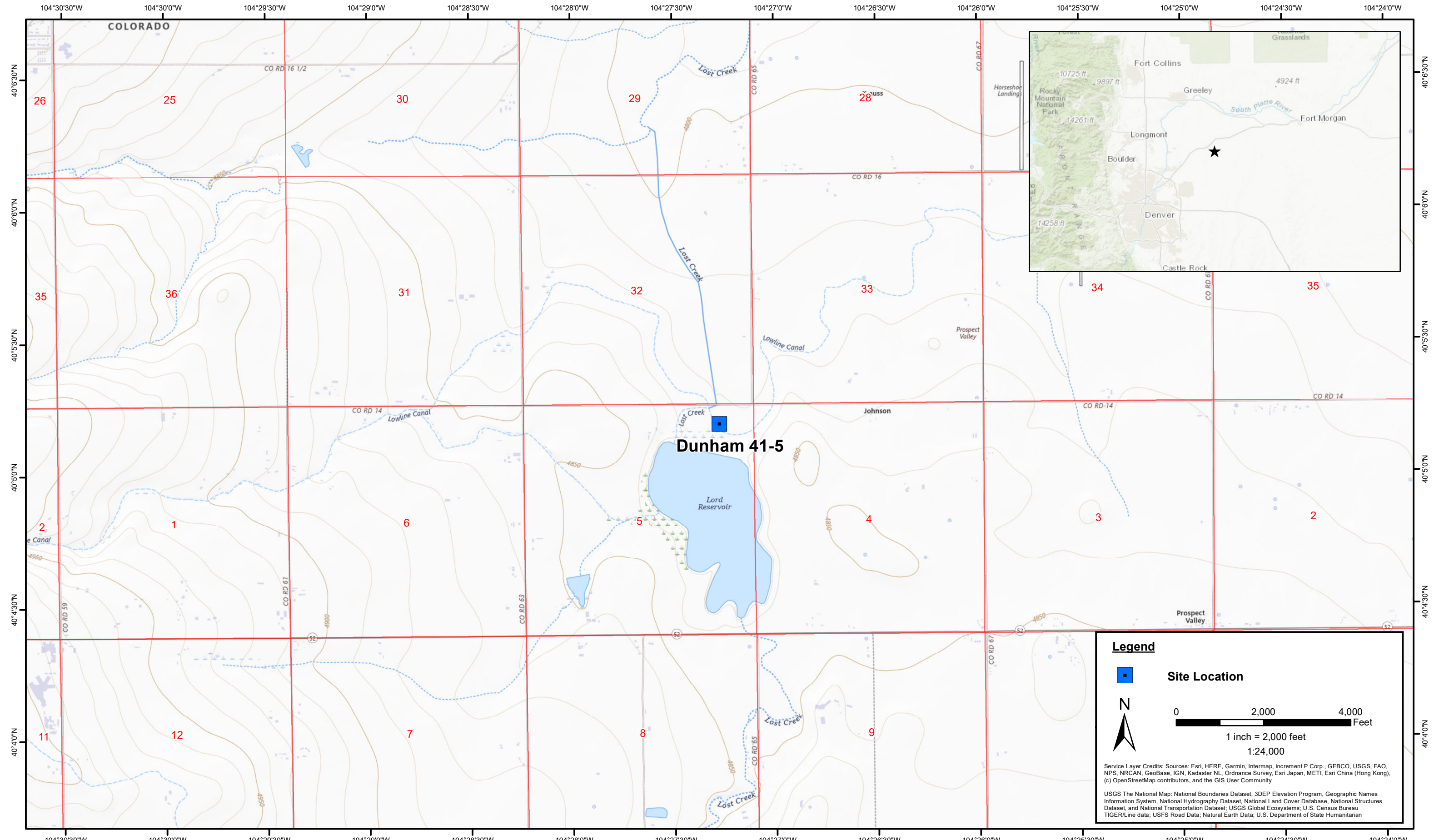
(<) = Analytical result is less than the indicated laboratory reporting limit.

mg/kg = Milligrams per kilogram

ft. = Feet

bgs = Below ground surface

* Indicates laboratory minimum detection limit in excess of SSL



DATE: October 30, 2024
 DESIGNED BY: B. Nelson
 DRAWN BY: J. Woffinden

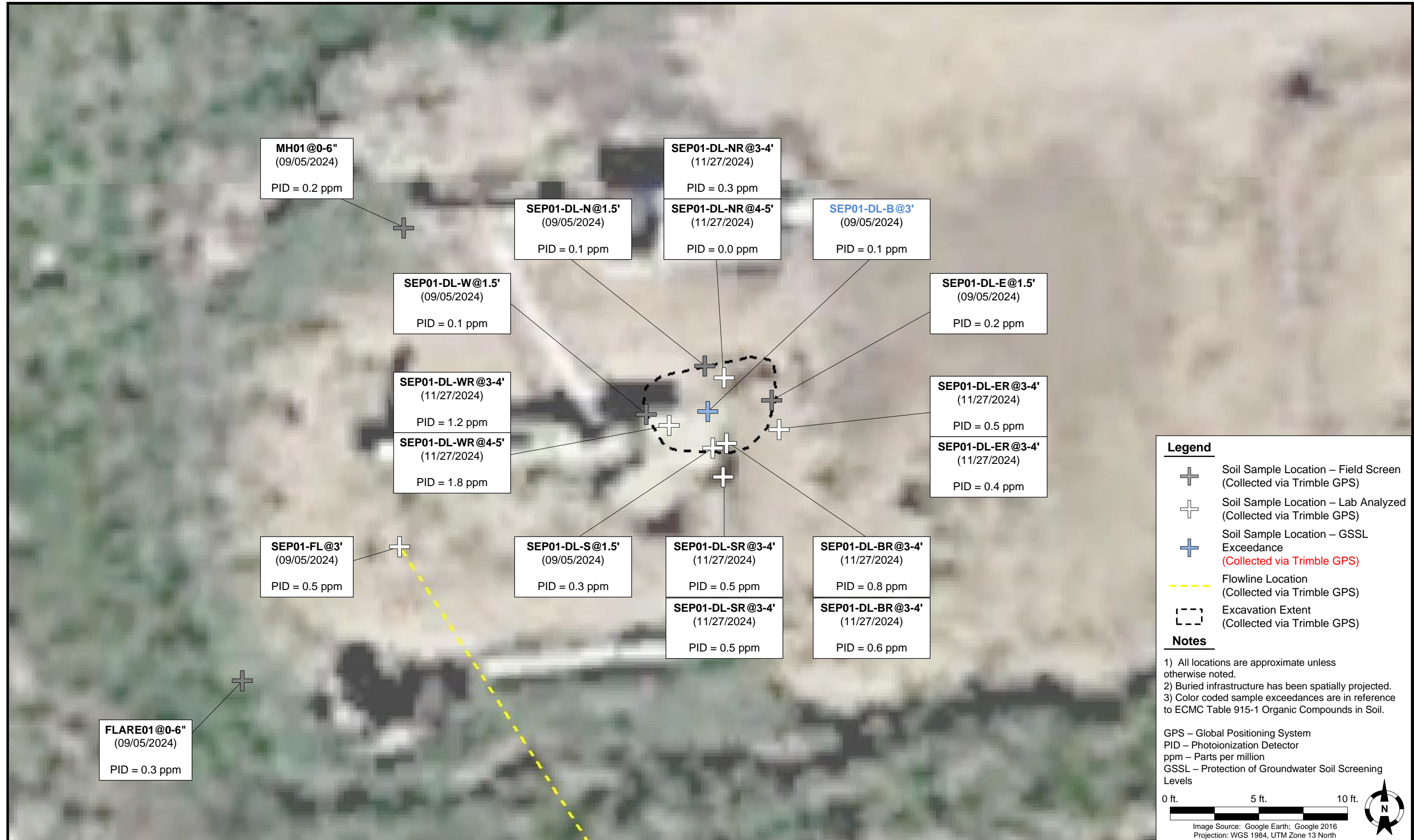


Tasman, Inc.
 6855 W. 119th Ave
 Broomfield, CO 80020

PDC Energy, Inc. – 69175 – DJ Basin
Dunham 41-5
 NENE Sec. 5-T1S-R63W
 Weld County, Colorado

Site Location Map

Figure
1



MH01@0-6"
 (09/05/2024)
 PID = 0.2 ppm

SEP01-DL-N@1.5'
 (09/05/2024)
 PID = 0.1 ppm

SEP01-DL-NR@3-4'
 (11/27/2024)
 PID = 0.3 ppm

SEP01-DL-NR@4-5'
 (11/27/2024)
 PID = 0.0 ppm

SEP01-DL-B@3'
 (09/05/2024)
 PID = 0.1 ppm

SEP01-DL-W@1.5'
 (09/05/2024)
 PID = 0.1 ppm

SEP01-DL-E@1.5'
 (09/05/2024)
 PID = 0.2 ppm

SEP01-DL-WR@3-4'
 (11/27/2024)
 PID = 1.2 ppm

SEP01-DL-ER@3-4'
 (11/27/2024)
 PID = 0.5 ppm

SEP01-DL-WR@4-5'
 (11/27/2024)
 PID = 1.8 ppm

SEP01-DL-ER@3-4'
 (11/27/2024)
 PID = 0.4 ppm

SEP01-FL@3'
 (09/05/2024)
 PID = 0.5 ppm

SEP01-DL-S@1.5'
 (09/05/2024)
 PID = 0.3 ppm

SEP01-DL-SR@3-4'
 (11/27/2024)
 PID = 0.5 ppm

SEP01-DL-BR@3-4'
 (11/27/2024)
 PID = 0.8 ppm

SEP01-DL-SR@3-4'
 (11/27/2024)
 PID = 0.5 ppm

SEP01-DL-BR@3-4'
 (11/27/2024)
 PID = 0.6 ppm

FLARE01@0-6"
 (09/05/2024)
 PID = 0.3 ppm

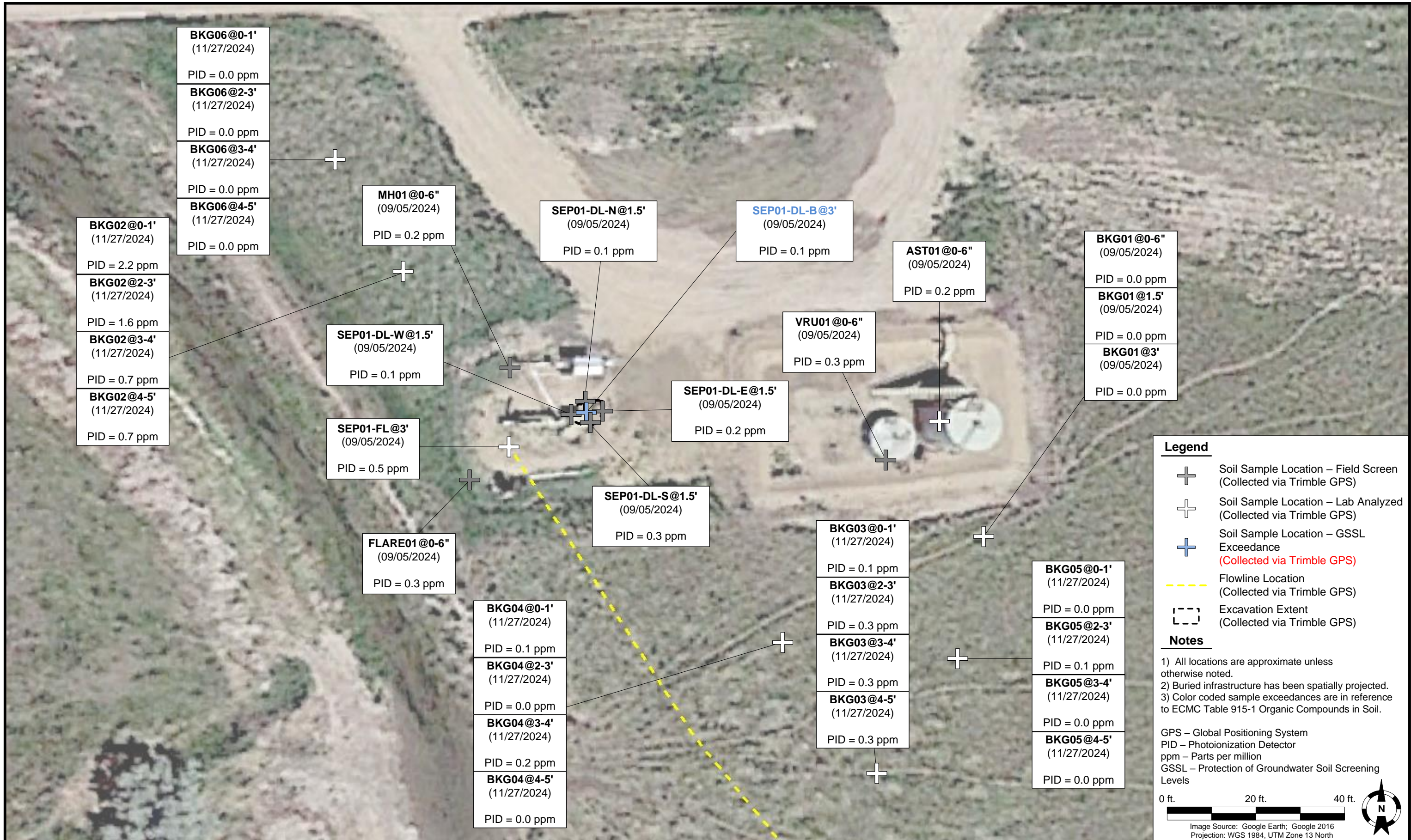
DATE: December 3, 2024
 DESIGNED BY: J. Whritenour
 DRAWN BY: J. Rollins



PDC Energy, Inc. – 69175 – DJ Basin
Dunham 41-5 Tank Battery
 NENE, Section 5, Township 1 North, Range 63 West
 Weld County, Colorado

SOIL SAMPLE LOCATION MAP (TANK BATTERY)

FIGURE 2



DATE: December 3, 2024

DESIGNED BY: J. Whritenour

DRAWN BY: J. Rollins



TASMAN Tasman, Inc.
 6855 W 119th Avenue
 Broomfield, CO 80020

PDC Energy, Inc. – 69175 – DJ Basin
Dunham 41-5 Tank Battery
 NENE, Section 5, Township 1 North, Range 63 West
 Weld County, Colorado

SOIL SAMPLE LOCATION MAP (TANK BATTERY)

FIGURE 3



6855 W. 119th Ave.
Broomfield, CO 80020

CLIENT: PDC

LOGGED BY: David Erwin

PROJECT MANAGER: Brock Nelson

DRILLING CONTRACTOR: Tasman

DRILLING EQUIPMENT: HA

DRILL BIT SIZE (INCHES): 3"

DATE STARTED - COMPLETED: 09/05/24-09/08/24

TOTAL WELL DEPTH (FT. BGS): 3

DEPTH WATER ENCOUNTERED (FT. BGS): NM

Dunham 41-5

BORING/WELL ID: BKG01

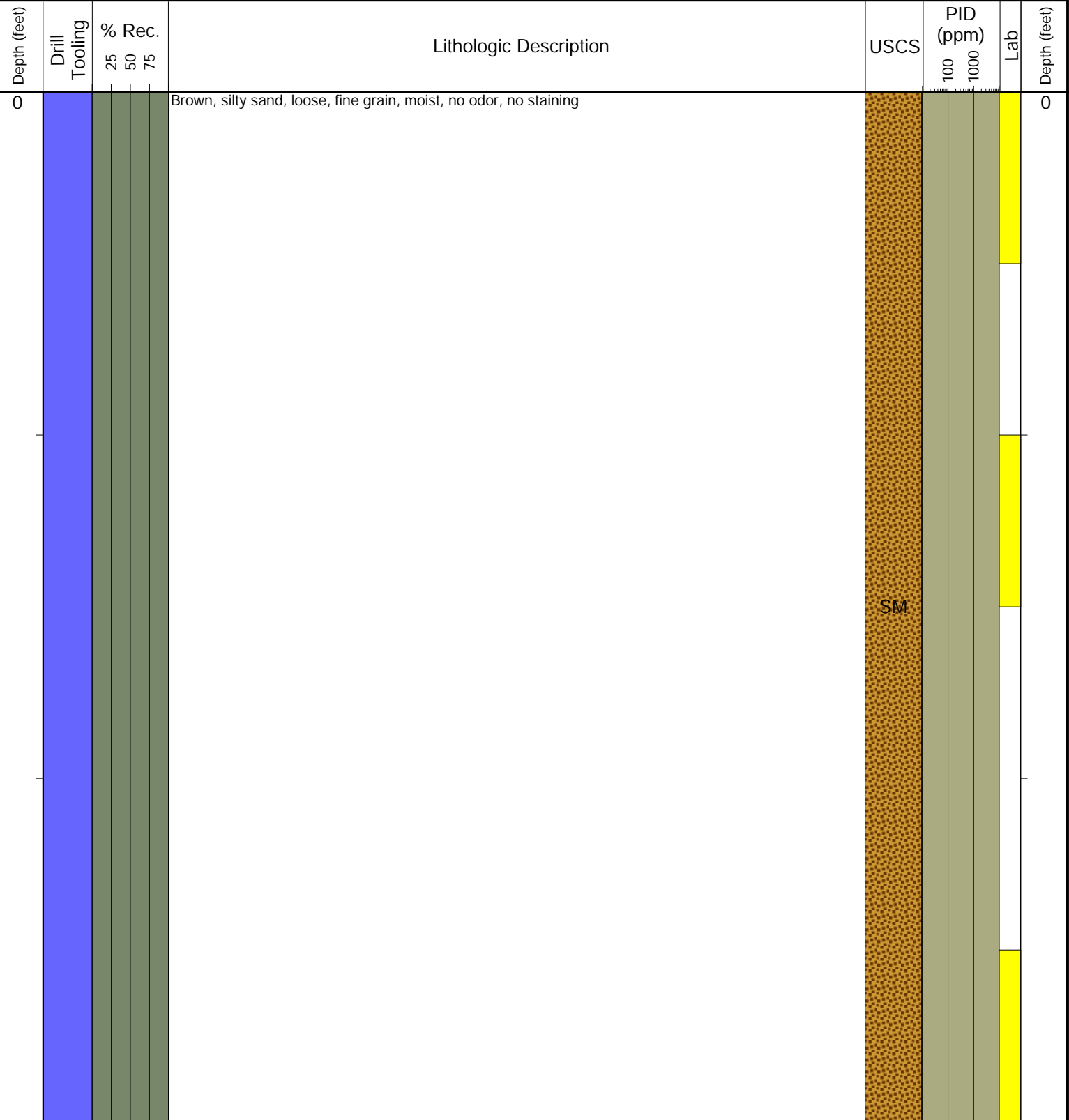
LOCATION: Weld County, Colorado

Latitude (NAD 83): 40.0862900163

Longitude (NAD 83): -104.454490419

GROUND ELEVATION (FT. AMSL):

ABANDONMENT METHOD: NM



Drilling / Sample Method:

- Macro-Core
- Hand Auger
- HydroPunch Groundwater Sampler
- Expendable Well Tip

Laboratory Sample Types:

- Geotechnical Lab
- Analytical Chemistry Lab
- Geotechnical & Analytical Chemistry Lab



6855 W. 119th Ave.
Broomfield, CO 80020

CLIENT: PDC

LOGGED BY: McKenzie Reynolds

PROJECT MANAGER: Daniel Simpson

DRILLING CONTRACTOR: Tasman

DRILLING EQUIPMENT: HA

DRILL BIT SIZE (INCHES): 3"

DATE STARTED - COMPLETED: 11/27/24-11/27/24

TOTAL WELL DEPTH (FT. BGS): 5

DEPTH WATER ENCOUNTERED (FT. BGS): NM

Dunham 41-5

BORING/WELL ID: BKG02

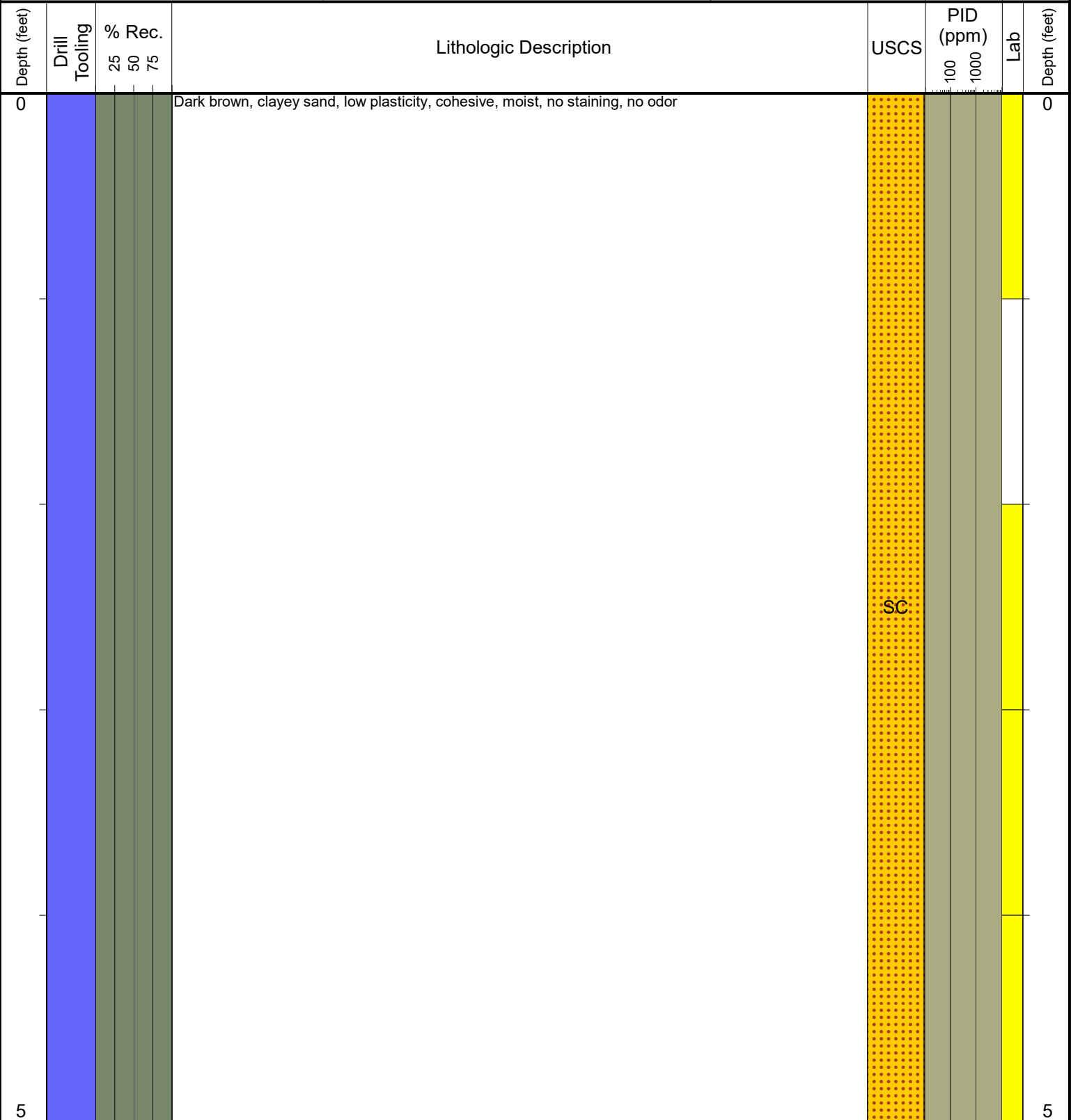
LOCATION: Weld County, Colorado

Latitude (NAD 83): 40.087441641145

Longitude (NAD 83): -104.45540589707

GROUND ELEVATION (FT. AMSL):

ABANDONMENT METHOD: NM



Drilling / Sample Method:

- Macro-Core
- Hand Auger
- Expendable Well Tip
- HydroPunch Groundwater Sampler

Laboratory Sample Types:

- Geotechnical Lab
- Analytical Chemistry Lab
- Geotechnical & Analytical Chemistry Lab



6855 W. 119th Ave.
Broomfield, CO 80020

CLIENT: PDC

LOGGED BY: McKenzie Reynolds

PROJECT MANAGER: Daniel Simpson

DRILLING CONTRACTOR: Tasman

DRILLING EQUIPMENT: HA

DRILL BIT SIZE (INCHES): 3"

DATE STARTED - COMPLETED: 11/27/24-11/27/24

TOTAL WELL DEPTH (FT. BGS): 5

DEPTH WATER ENCOUNTERED (FT. BGS): NM

Dunham 41-5

BORING/WELL ID: BKG03

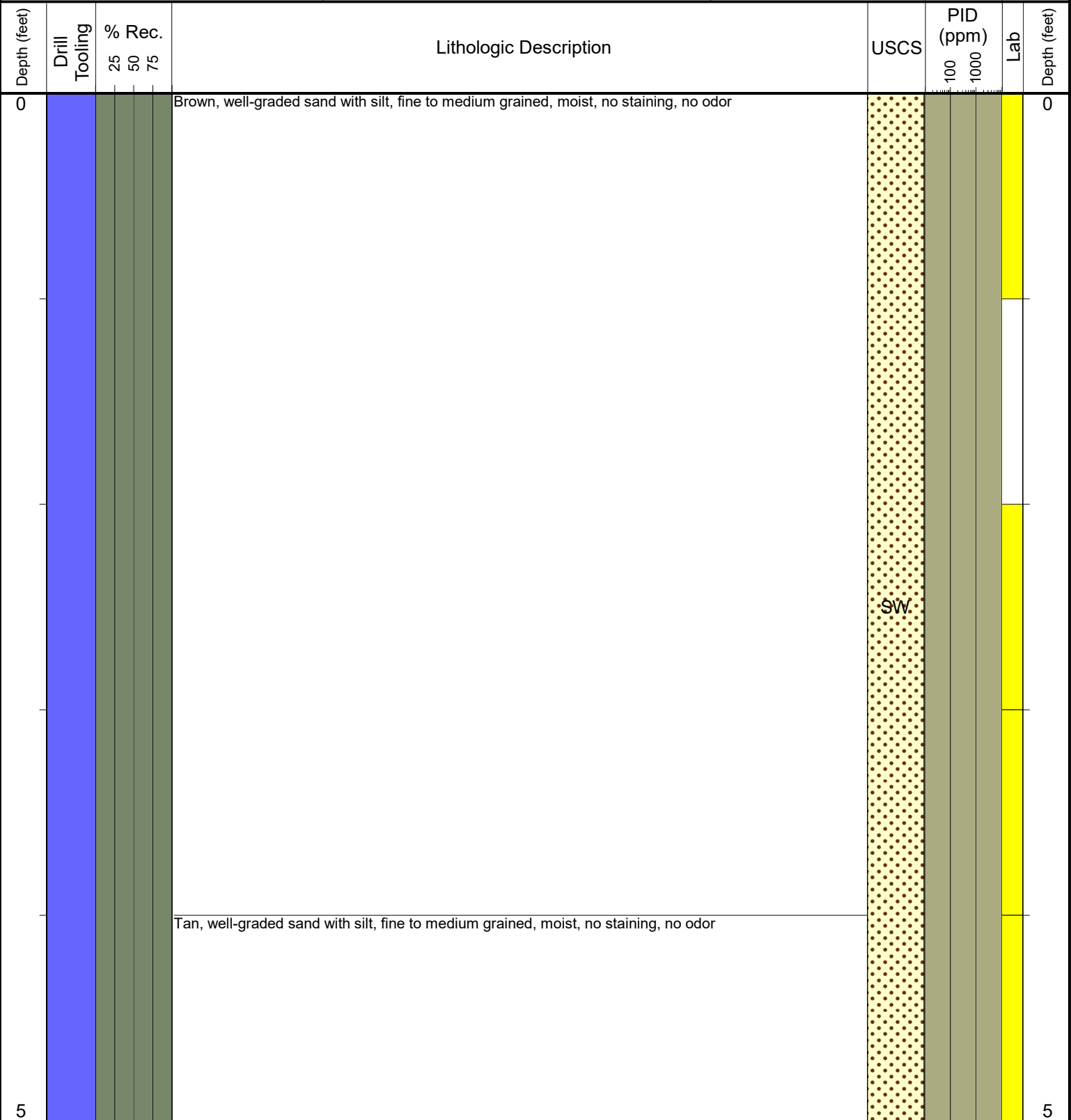
LOCATION: Weld County, Colorado

Latitude (NAD 83): 40.087127986371

Longitude (NAD 83): -104.45502483422

GROUND ELEVATION (FT. AMSL):

ABANDONMENT METHOD: NM



Drilling / Sample Method:

- Macro-Core
- Hand Auger
- Expendable Well Tip
- HydroPunch Groundwater Sampler

Laboratory Sample Types:

- Geotechnical Lab
- Analytical Chemistry Lab
- Geotechnical & Analytical Chemistry Lab



6855 W. 119th Ave.
Broomfield, CO 80020

CLIENT: PDC

LOGGED BY: McKenzie Reynolds

PROJECT MANAGER: Daniel Simpson

DRILLING CONTRACTOR: Tasman

DRILLING EQUIPMENT: HA

DRILL BIT SIZE (INCHES): 3"

DATE STARTED - COMPLETED: 11/27/24-11/27/24

TOTAL WELL DEPTH (FT. BGS): 5

DEPTH WATER ENCOUNTERED (FT. BGS): NM

Dunham 41-5

BORING/WELL ID: BKG04

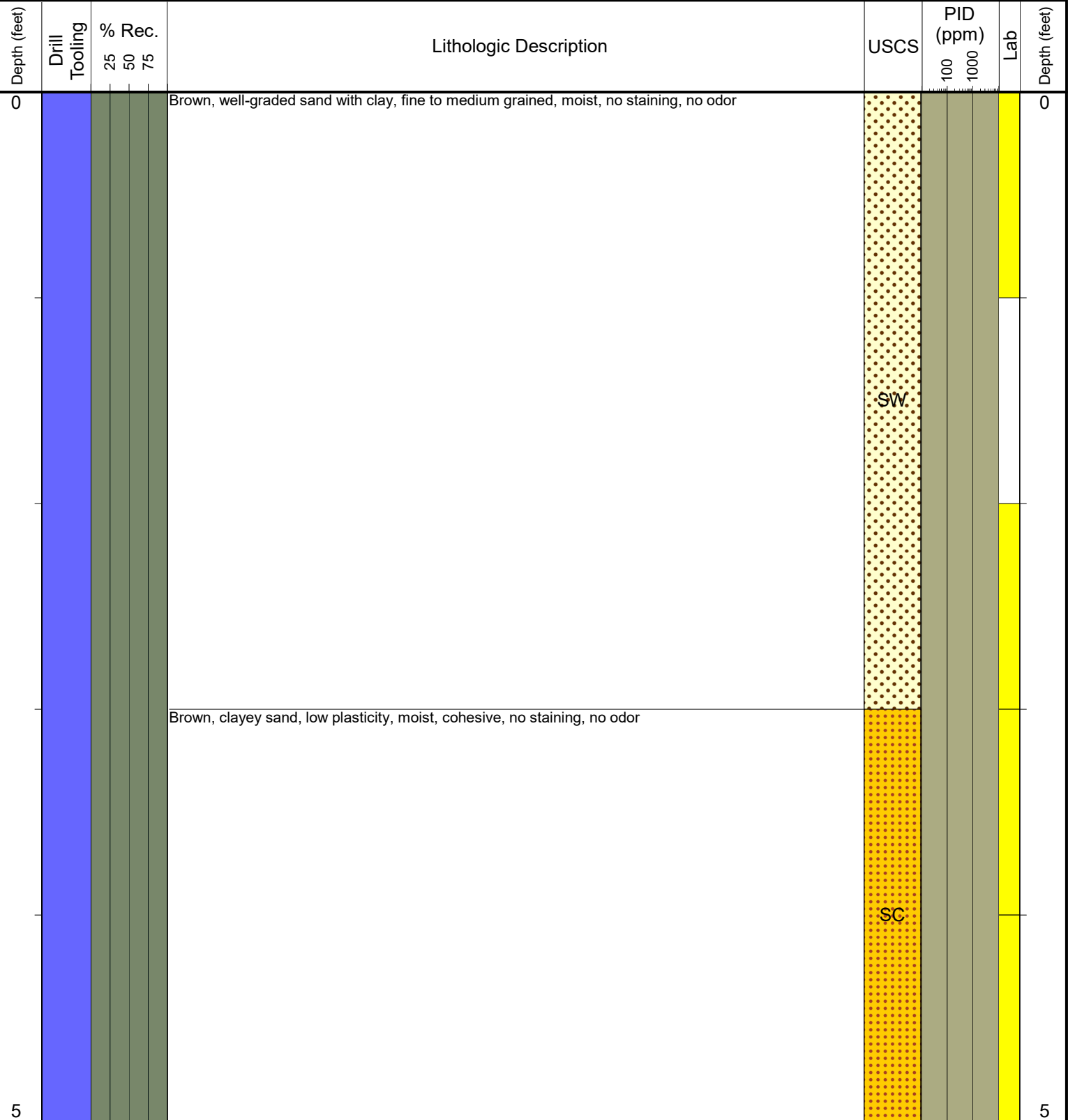
LOCATION: Weld County, Colorado

Latitude (NAD 83): 40.087208988227

Longitude (NAD 83): -104.455100323

GROUND ELEVATION (FT. AMSL):

ABANDONMENT METHOD: NM



Drilling / Sample Method:

- Macro-Core
- Hand Auger
- Expendable Well Tip
- HydroPunch Groundwater Sampler

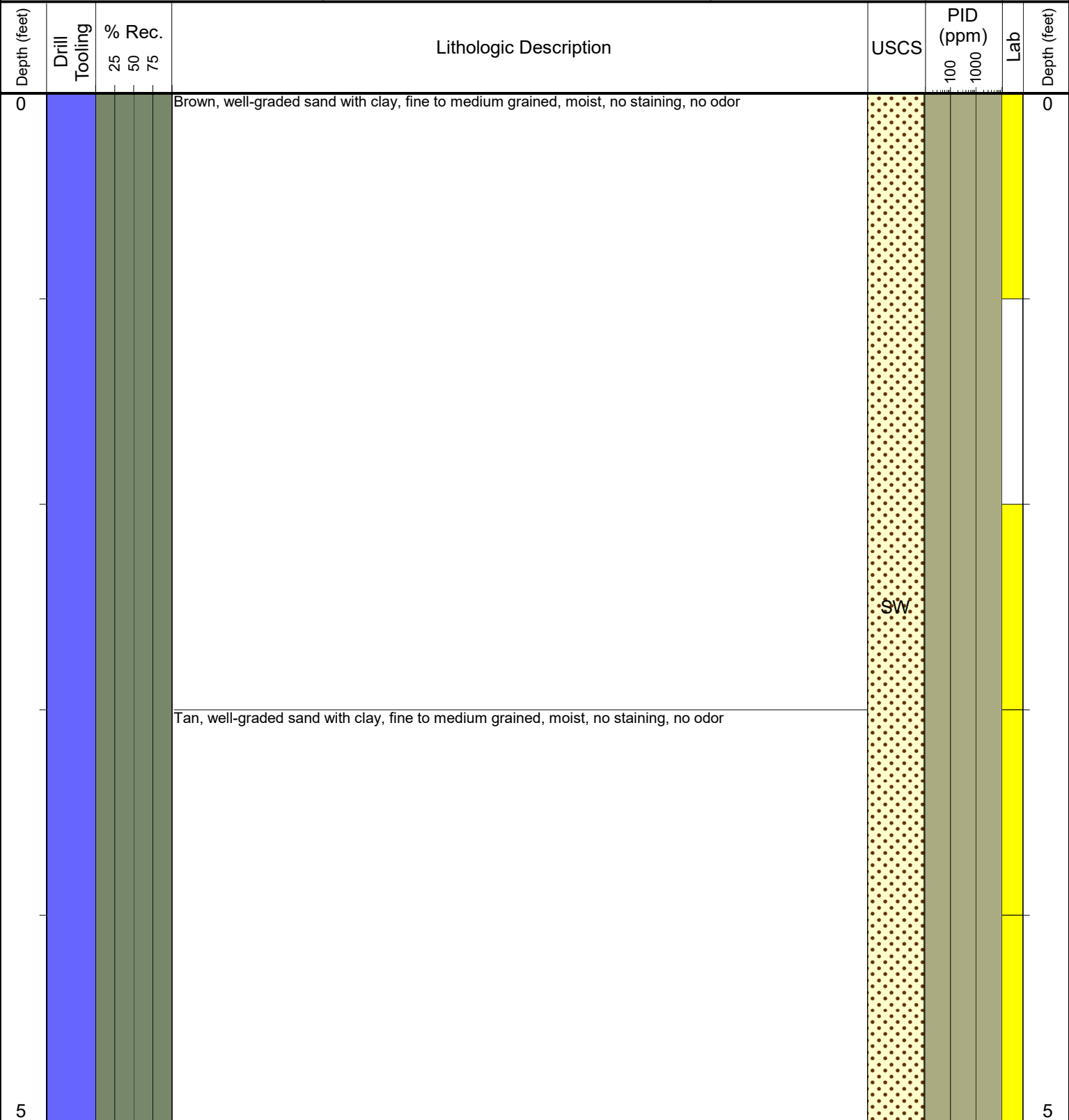
Laboratory Sample Types:

- Geotechnical Lab
- Analytical Chemistry Lab
- Geotechnical & Analytical Chemistry Lab



6855 W. 119th Ave.
Broomfield, CO 80020

CLIENT: PDC	Dunham 41-5
LOGGED BY: McKenzie Reynolds	
PROJECT MANAGER: Daniel Simpson	BORING/WELL ID: BKG05
DRILLING CONTRACTOR: Tasman	
DRILLING EQUIPMENT: HA	LOCATION: Weld County, Colorado
DRILL BIT SIZE (INCHES): 3"	Latitude (NAD 83): 40.087198607075
DATE STARTED - COMPLETED: 11/27/24-11/27/24	Longitude (NAD 83): -104.45495908372
TOTAL WELL DEPTH (FT. BGS): 5	GROUND ELEVATION (FT. AMSL):
DEPTH WATER ENCOUNTERED (FT. BGS): NM	ABANDONMENT METHOD: NM



Drilling / Sample Method:

- Macro-Core
- Hand Auger
- Expendable Well Tip
- HydroPunch Groundwater Sampler

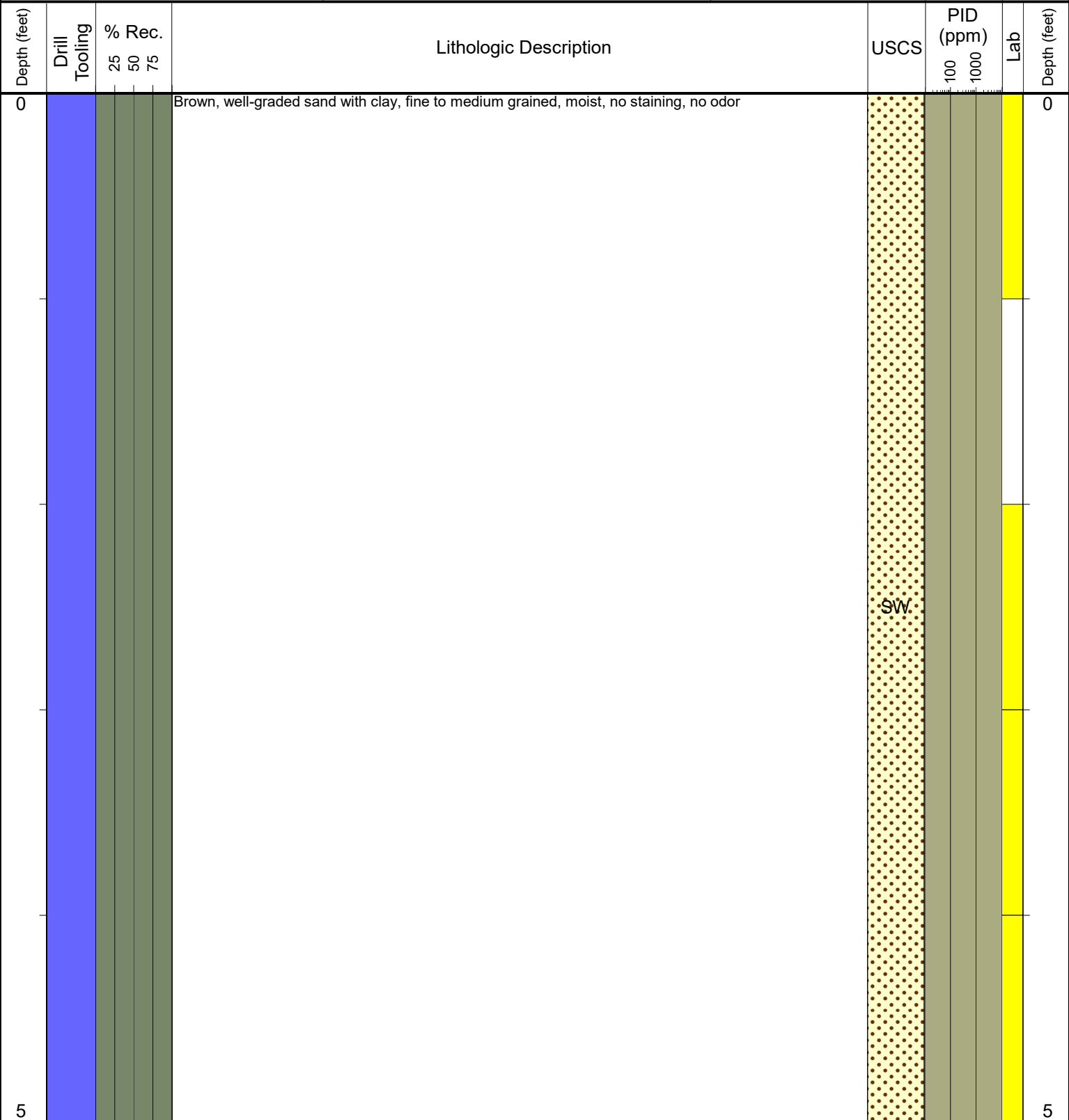
Laboratory Sample Types:

- Geotechnical Lab
- Analytical Chemistry Lab
- Geotechnical & Analytical Chemistry Lab



6855 W. 119th Ave.
Broomfield, CO 80020

CLIENT: PDC	Dunham 41-5
LOGGED BY: McKenzie Reynolds	
PROJECT MANAGER: Daniel Simpson	BORING/WELL ID: BKG06
DRILLING CONTRACTOR: Tasman	
DRILLING EQUIPMENT: HA	LOCATION: Weld County, Colorado
DRILL BIT SIZE (INCHES): 3"	Latitude (NAD 83): 40.087510112493
DATE STARTED - COMPLETED: 11/27/24-11/27/24	Longitude (NAD 83): -104.45545856136
TOTAL WELL DEPTH (FT. BGS): 5	GROUND ELEVATION (FT. AMSL):
DEPTH WATER ENCOUNTERED (FT. BGS): NM	ABANDONMENT METHOD: NM



Drilling / Sample Method:

- Macro-Core
- Hand Auger
- Expendable Well Tip
- HydroPunch Groundwater Sampler

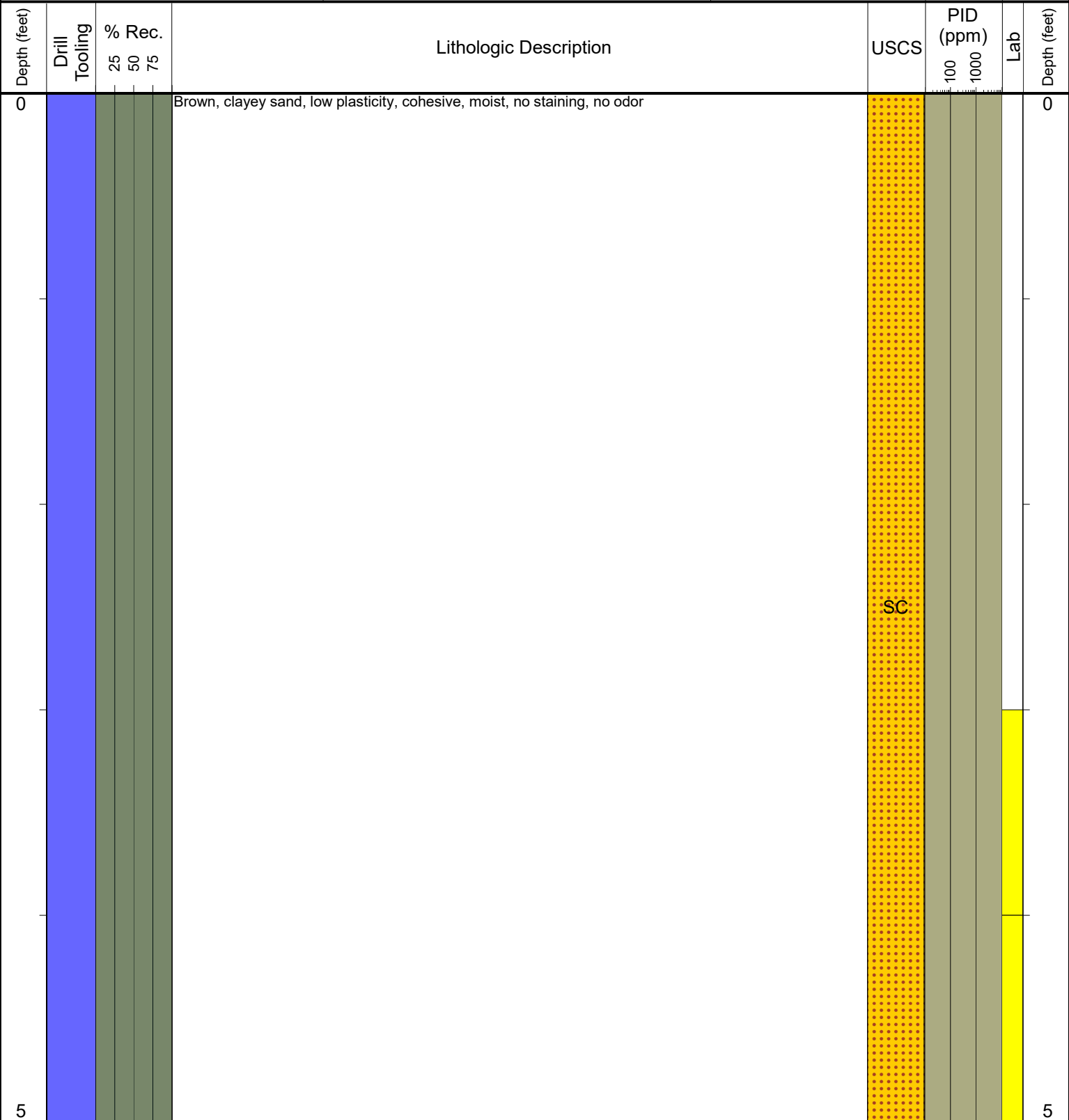
Laboratory Sample Types:

- Geotechnical Lab
- Analytical Chemistry Lab
- Geotechnical & Analytical Chemistry Lab



6855 W. 119th Ave.
Broomfield, CO 80020

CLIENT: PDC	Dunham 41-5
LOGGED BY: McKenzie Reynolds	
PROJECT MANAGER: Daniel Simpson	BORING/WELL ID: SEP01-DL-BR
DRILLING CONTRACTOR: Tasman	
DRILLING EQUIPMENT: HA	LOCATION: Weld County, Colorado
DRILL BIT SIZE (INCHES): 3"	Latitude (NAD 83): 40.087346834288
DATE STARTED - COMPLETED: 11/27/24-11/27/24	Longitude (NAD 83): -104.45525341027
TOTAL WELL DEPTH (FT. BGS): 5	GROUND ELEVATION (FT. AMSL):
DEPTH WATER ENCOUNTERED (FT. BGS): NM	ABANDONMENT METHOD: NM



Drilling / Sample Method:

- Macro-Core
- Hand Auger
- Expendable Well Tip
- HydroPunch Groundwater Sampler

Laboratory Sample Types:

- Geotechnical Lab
- Analytical Chemistry Lab
- Geotechnical & Analytical Chemistry Lab



6855 W. 119th Ave.
Broomfield, CO 80020

CLIENT: PDC

LOGGED BY: McKenzie Reynolds

PROJECT MANAGER: Daniel Simpson

DRILLING CONTRACTOR: Tasman

DRILLING EQUIPMENT: HA

DRILL BIT SIZE (INCHES): 3"

DATE STARTED - COMPLETED: 11/27/24-11/27/24

TOTAL WELL DEPTH (FT. BGS): 5

DEPTH WATER ENCOUNTERED (FT. BGS): NM

Dunham 41-5

BORING/WELL ID: SEP01-DL-ER

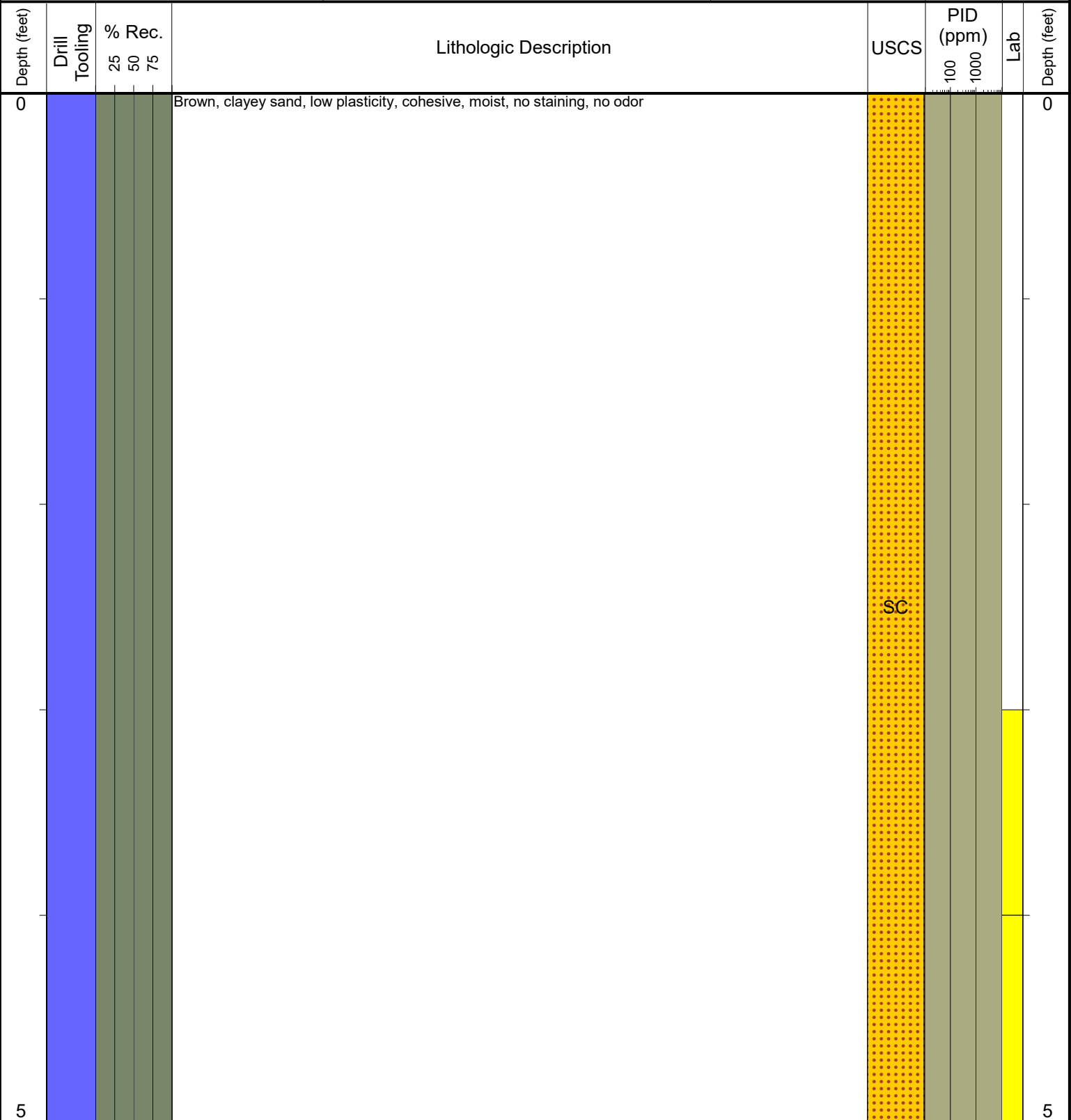
LOCATION: Weld County, Colorado

Latitude (NAD 83): 40.08734915897

Longitude (NAD 83): -104.45524295123

GROUND ELEVATION (FT. AMSL):

ABANDONMENT METHOD: NM



Drilling / Sample Method:

- Macro-Core
- Hand Auger
- Expendable Well Tip
- HydroPunch Groundwater Sampler

Laboratory Sample Types:

- Geotechnical Lab
- Analytical Chemistry Lab
- Geotechnical & Analytical Chemistry Lab



6855 W. 119th Ave.
Broomfield, CO 80020

CLIENT: PDC

LOGGED BY: McKenzie Reynolds

PROJECT MANAGER: Daniel Simpson

DRILLING CONTRACTOR: Tasman

DRILLING EQUIPMENT: HA

DRILL BIT SIZE (INCHES): 3"

DATE STARTED - COMPLETED: 11/27/24-11/27/24

TOTAL WELL DEPTH (FT. BGS): 5

DEPTH WATER ENCOUNTERED (FT. BGS): NM

Dunham 41-5

BORING/WELL ID: SEP01-DL-NR

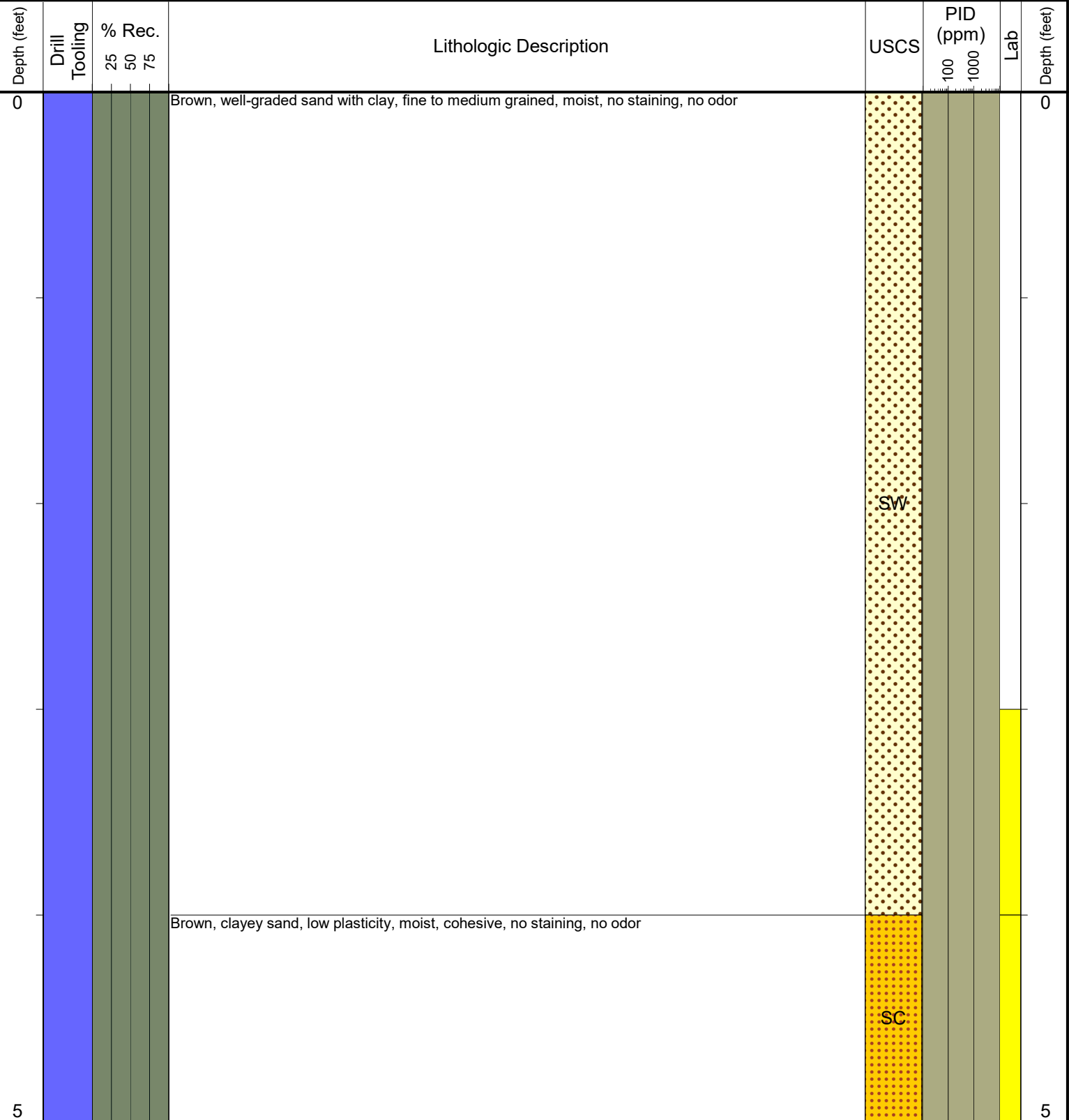
LOCATION: Weld County, Colorado

Latitude (NAD 83): 40.087357002266

Longitude (NAD 83): -104.45525391989

GROUND ELEVATION (FT. AMSL):

ABANDONMENT METHOD: NM



Drilling / Sample Method:

- Macro-Core
- Hand Auger
- Expendable Well Tip
- HydroPunch Groundwater Sampler

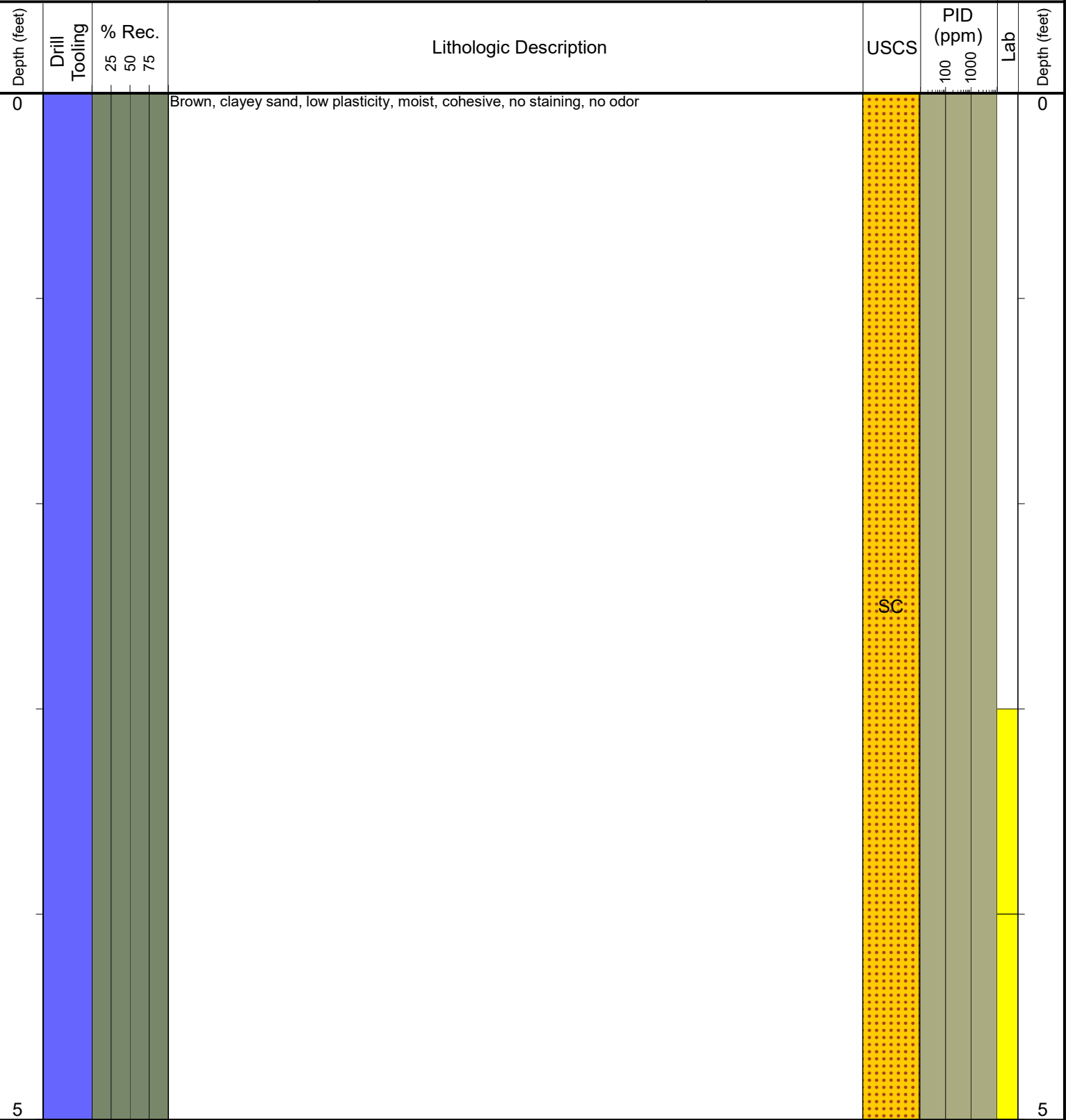
Laboratory Sample Types:

- Geotechnical Lab
- Analytical Chemistry Lab
- Geotechnical & Analytical Chemistry Lab



6855 W. 119th Ave.
Broomfield, CO 80020

CLIENT: PDC	Dunham 41-5
LOGGED BY: McKenzie Reynolds	
PROJECT MANAGER: Daniel Simpson	BORING/WELL ID: SEP01-DL-SR
DRILLING CONTRACTOR: Tasman	
DRILLING EQUIPMENT: HA	LOCATION: Weld County, Colorado
DRILL BIT SIZE (INCHES): 3"	Latitude (NAD 83): 40.08734156524
DATE STARTED - COMPLETED: 11/27/24-11/27/24	Longitude (NAD 83): -104.45525397775
TOTAL WELL DEPTH (FT. BGS): 5	GROUND ELEVATION (FT. AMSL):
DEPTH WATER ENCOUNTERED (FT. BGS): NM	ABANDONMENT METHOD: NM



Drilling / Sample Method:

- Macro-Core
- Hand Auger
- Expendable Well Tip
- HydroPunch Groundwater Sampler

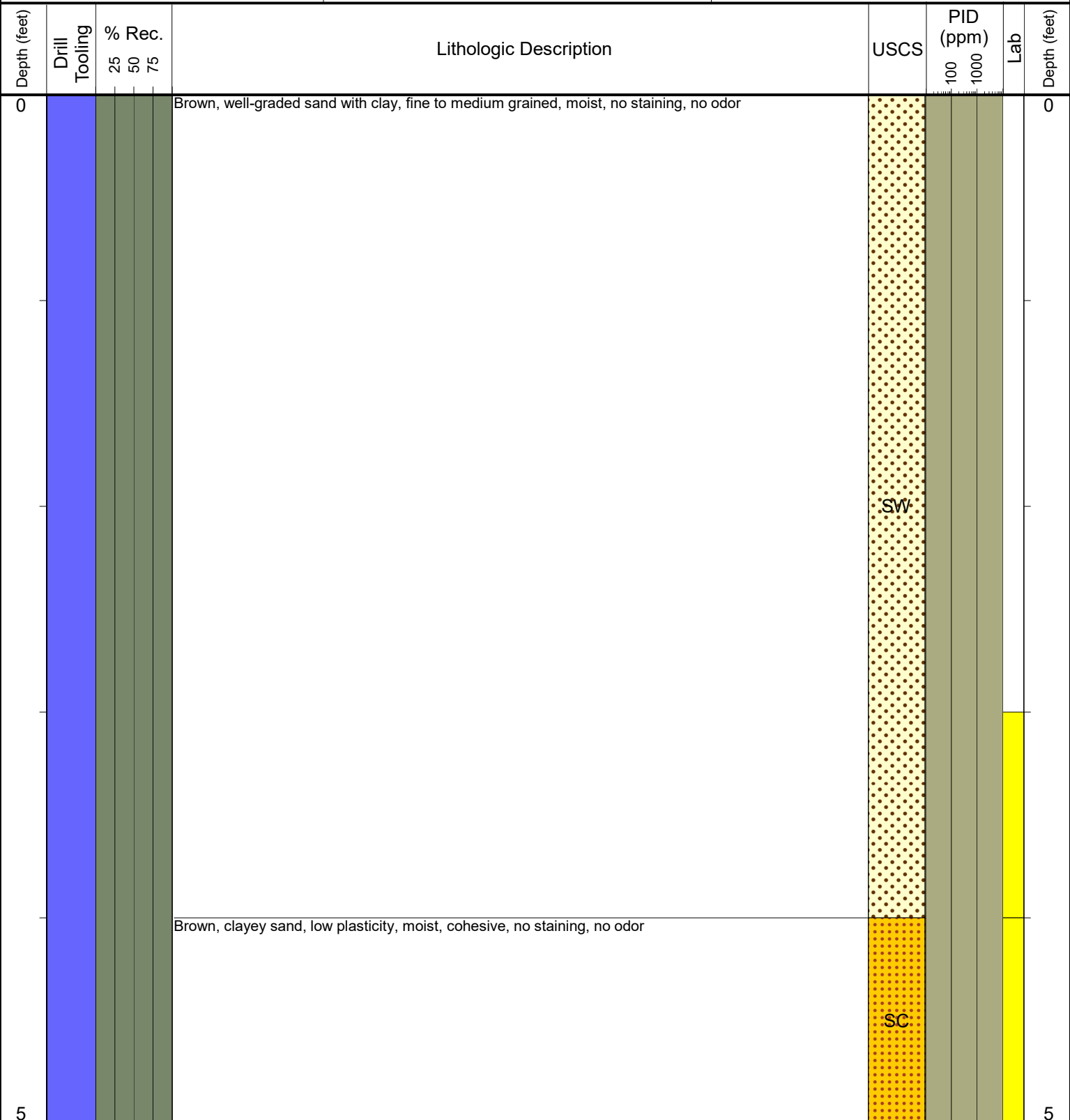
Laboratory Sample Types:

- Geotechnical Lab
- Analytical Chemistry Lab
- Geotechnical & Analytical Chemistry Lab



6855 W. 119th Ave.
Broomfield, CO 80020

CLIENT: PDC	Dunham 41-5
LOGGED BY: McKenzie Reynolds	
PROJECT MANAGER: Daniel Simpson	BORING/WELL ID: SEP01-DL-WR
DRILLING CONTRACTOR: Tasman	
DRILLING EQUIPMENT: HA	LOCATION: Weld County, Colorado
DRILL BIT SIZE (INCHES): 3"	Latitude (NAD 83): 40.087349736952
DATE STARTED - COMPLETED: 11/27/24-11/27/24	Longitude (NAD 83): -104.45526507957
TOTAL WELL DEPTH (FT. BGS): 5	GROUND ELEVATION (FT. AMSL):
DEPTH WATER ENCOUNTERED (FT. BGS): NM	ABANDONMENT METHOD: NM



Drilling / Sample Method:

- Macro-Core
- Hand Auger
- Geotechnical Lab
- Geotechnical & Analytical Chemistry Lab
- Expendable Well Tip
- HydroPunch Groundwater Sampler
- Analytical Chemistry Lab