



TANK BATTERY DECOMMISSIONING FORM

SITE NAME: Land 31-13, 17, 19, 24, 36D Tank Battery							DATE: 9/9/2024	REM. PROJECT #: 33833	WEATHER: 70s sunny	
SITE DIRECTIONS: CR 16 x CR 49, 0.75 mi N, E into							CLIENT: PDC			
LEGALS AND LAT/LONG: 40.088426, -104.602473							TASMAN PERSONNEL: E. Brauer, D. Decker			
SOIL TYPES: Silty Sand - SM							SURFACE GRADIENT: Southeast			
SOIL SAMPLING							FACILITY INFRASTRUCTURE			
Date/Time	Soil Sample ID	PID (ppm)	Visual	Olfactory	Photo?	Grab or Lab Sample?	EQUIPMENT	Quantity	Photo?	
							Above Ground Storage Tank (AST)	3		
9/9/2024 09:10	AST01@0-6"	0.6	No Staining	No Odor	Yes	Lab	Buried or Partially Buried Vessel	2		
9/9/2024 09:11	AST02@0-6"	0.6	No Staining	No Odor	Yes	Lab	Separator	1		
9/9/2024 09:12	AST03@0-6"	0.2	No Staining	No Odor	Yes	Lab	Emission Control Device (ECD)	2		
9/9/2024 10:51	PWV01-B@4.5'	0.1	No Staining	No Odor	Yes	Lab	Dump Line			
9/9/2024 11:06	PWV01-N@2.5'	0.0	No Staining	No Odor	Yes	On-hold	Wellhead			
9/9/2024 10:58	PWV01-E@2.5'	0.6	No Staining	No Odor	Yes	Lab	Flowline			
9/9/2024 10:49	PWV01-S@2.5'	0.0	No Staining	No Odor	Yes	On-hold	Other:			
9/9/2024 10:47	PWV02-B@4.5'	0.0	No Staining	No Odor	Yes	On-hold	Soil Loads Removed			
9/9/2024 11:04	PWV02-N@2.5'	0.0	No Staining	No Odor	Yes	On-hold	IMPACTED SOIL IDENTIFIED?			
9/9/2024 10:52	PWV02-S@2.5'	0.9	No Staining	No Odor	Yes	Lab	ESTIMATED VOLUME OF IMPACTS:			
9/9/2024 10:55	PWV02-W@2.5'	0.0	Organic Cont	No Odor	Yes	On-hold	Date	Number	CY	
9/9/2024 11:31	SEP01-DL@4.5'	0.0	No Staining	No Odor	Yes	Lab				
9/9/2024 13:25	SEP01-FL01@4.5'	0.0	No Staining	No Odor	Yes	Lab				
9/9/2024 13:20	SEP01-FL02@4.5'	0.0	No Staining	No Odor	Yes	Lab				
9/9/2024 13:28	SEP01-FL03@4.5'	0.0	No Staining	No Odor	Yes	Lab				
9/9/2024 13:18	SEP01-FL04@4.5'	0.0	No Staining	No Odor	Yes	Lab	Total Removed	0	0	
9/9/2024 13:30	SEP01-FL05@4.5'	0.0	No Staining	No Odor	Yes	Lab	Disposal Facility:			
							Groundwater Recovery			
9/9/2024 09:03	GL01@0-6"	0.2	No Staining	No Odor	Yes	Lab	DATE GW ENCOUNTERED:		DEPTH:	
9/9/2024 08:52	FLARE01@0-6"	0.0	No Staining	No Odor	Yes	Grab	GROUNDWATER IN CONTACT WITH IMPACTED SOIL?			
9/9/2024 08:56	FLARE02@0-6"	0.0	No Staining	No Odor	Yes	Grab				
9/9/2024 09:17	MH01@0-6"	0.2	No Staining	No Odor	Yes	Grab	LNAPL OR SHEEN OBSERVED ON GW?			
GROUNDWATER SAMPLING							Date	BBLs		
Date/Time	Groundwater Sample ID	Depth Collected	Turbid?	Sheen?	Odor?	Photo?				
							Total Removed	0		
							Disposal Facility:			



Equipment ID: AST01@0-6	Equipment Type: Above Ground Storage Tank	
Material: Steel	Volume:	Contents: Crude Oil
Notes/Conditions: Facing east		

Equipment ID: AST02@0-6	Equipment Type: Above Ground Storage Tank	
Material: Steel	Volume:	Contents: Crude Oil
Notes/Conditions: Facing east		



Equipment ID: AST03@0-6"	Equipment Type: Above Ground Storage Tank	
Material: Steel	Volume:	Contents: Crude Oil
Notes/Conditions: Facing east		

Equipment ID: PWV01-B@4.5'	Equipment Type: Partially Buried Vault	
Material: Fiberglass	Volume:	Contents: Produced Water
Notes/Conditions: Facing SE		


Equipment ID: PWV01-N@2.5'

Equipment Type: Partially Buried Vault

Material: Fiberglass

Volume:
Contents: Produced Water

Notes/Conditions:
Equipment ID: PWV01-E@2.5'

Equipment Type: Partially Buried Vault

Material: Fiberglass

Volume:
Contents: Produced Water

Notes/Conditions: Facing east



Equipment ID: PWV01-S@2.5'		Equipment Type: Partially Buried Vault	
Material: Fiberglass	Volume:	Contents: Produced Water	
Notes/Conditions: FACING SE			

Equipment ID: PWV02-B@4.5'		Equipment Type: Partially Buried Vault	
Material: Fiberglass	Volume:	Contents: Produced Water	
Notes/Conditions: FACING SE			



Equipment ID: PWV02-B@4.5'		Equipment Type: Partially Buried Vault	
Material: Fiberglass	Volume:	Contents: Produced Water	
Notes/Conditions: FACING SOUTH			

Equipment ID: PWV02-N@2.5'		Equipment Type: Partially Buried Vault	
Material: Fiberglass	Volume:	Contents: Produced Water	
Notes/Conditions: FACING NORTH			



Equipment ID: PWV02-W@2.5'		Equipment Type: Partially Buried Vault	
Material: Fiberglass	Volume:	Contents: Produced Water	
Notes/Conditions: FACING WEST			

Equipment ID: PWV02-S@2.5'		Equipment Type: Partially Buried Vault	
Material: Fiberglass	Volume:	Contents: Produced Water	
Notes/Conditions: FACING SOUTH			



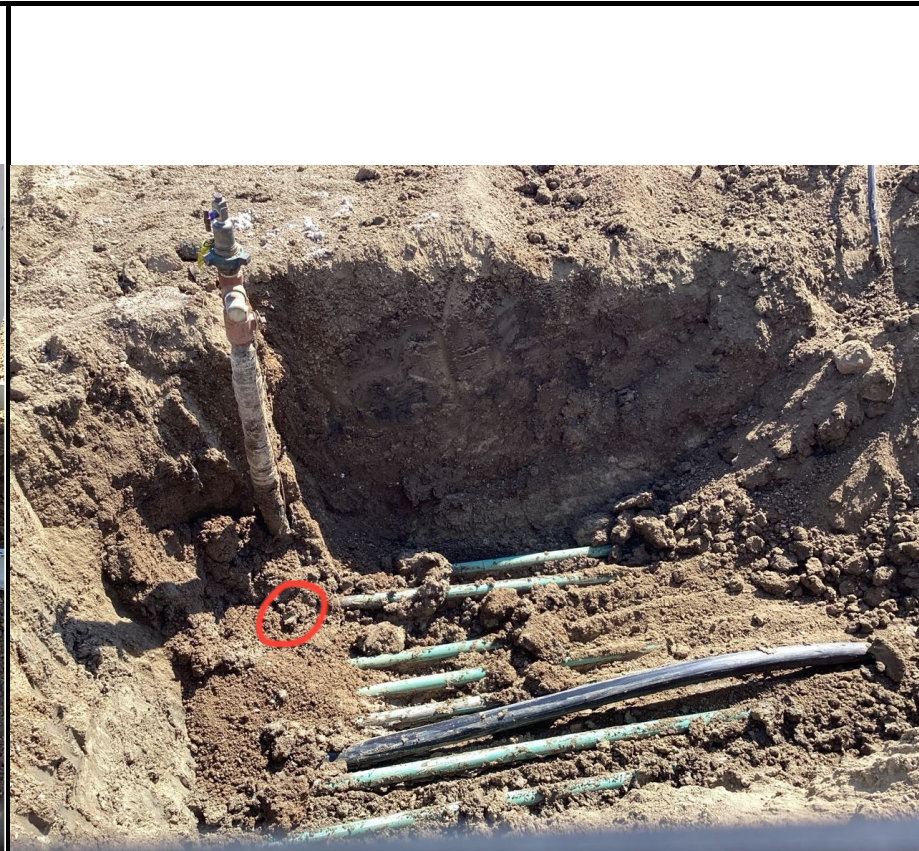
Equipment ID: PWV02-N@2.5'	Equipment Type: Partially Buried Vault
Material: Fiberglass	Volume:
Contents: Produced Water	
Notes/Conditions: FACING NORTH	

Equipment ID: FLARE01@0-6"	Equipment Type: Emission Control Device
Material: Fiberglass	Volume:
Contents: Condensate	
Notes/Conditions: FACING WEST	



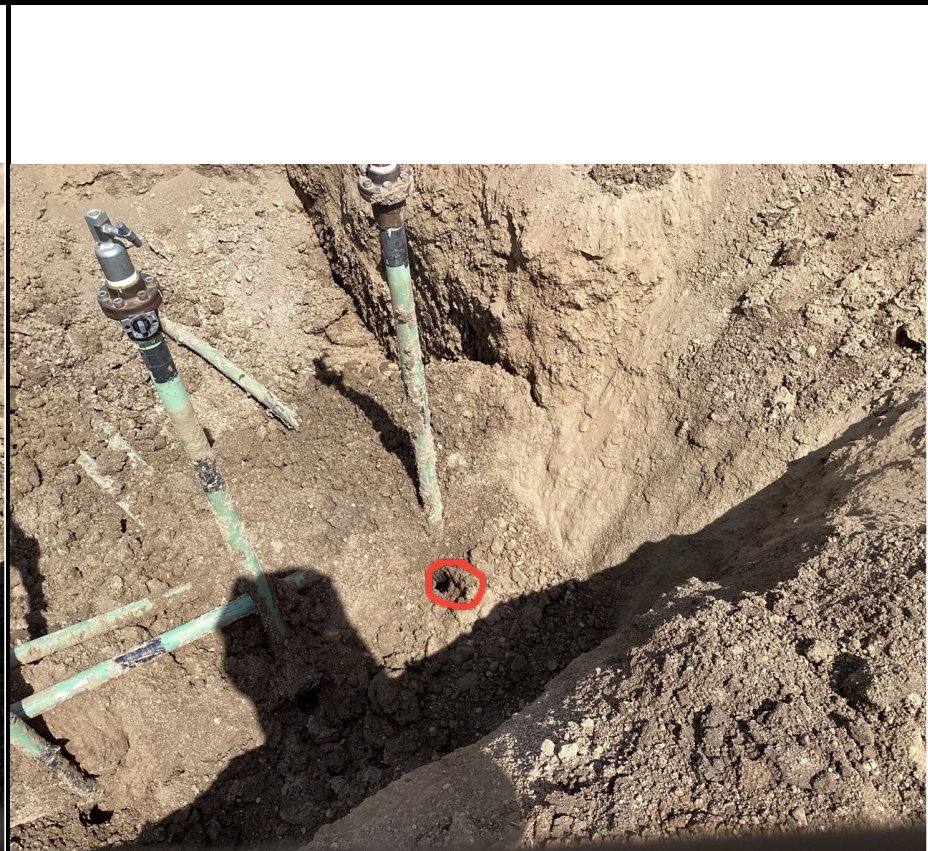
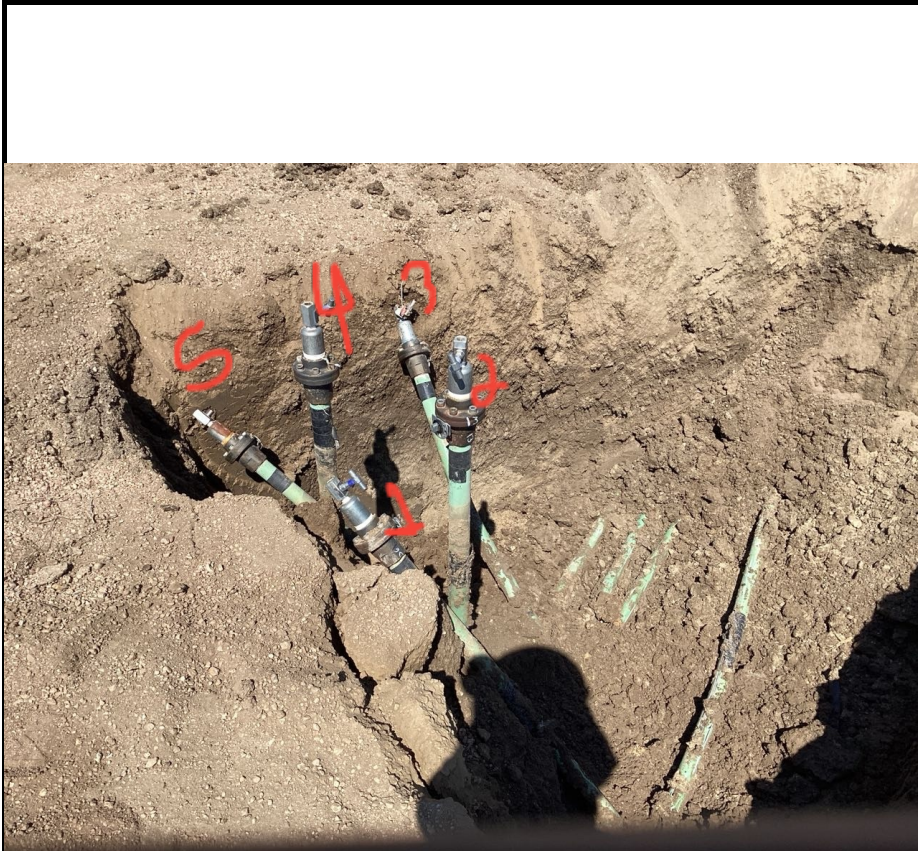
Equipment ID: FLARE02@0-6"		Equipment Type: Emission Control Device	
Material: Steel	Volume:	Contents:	
Notes/Conditions: FACING WEST			

Equipment ID: GL01@0-6"		Equipment Type:	
Material:	Volume:	Contents:	
Notes/Conditions: FACING WEST			



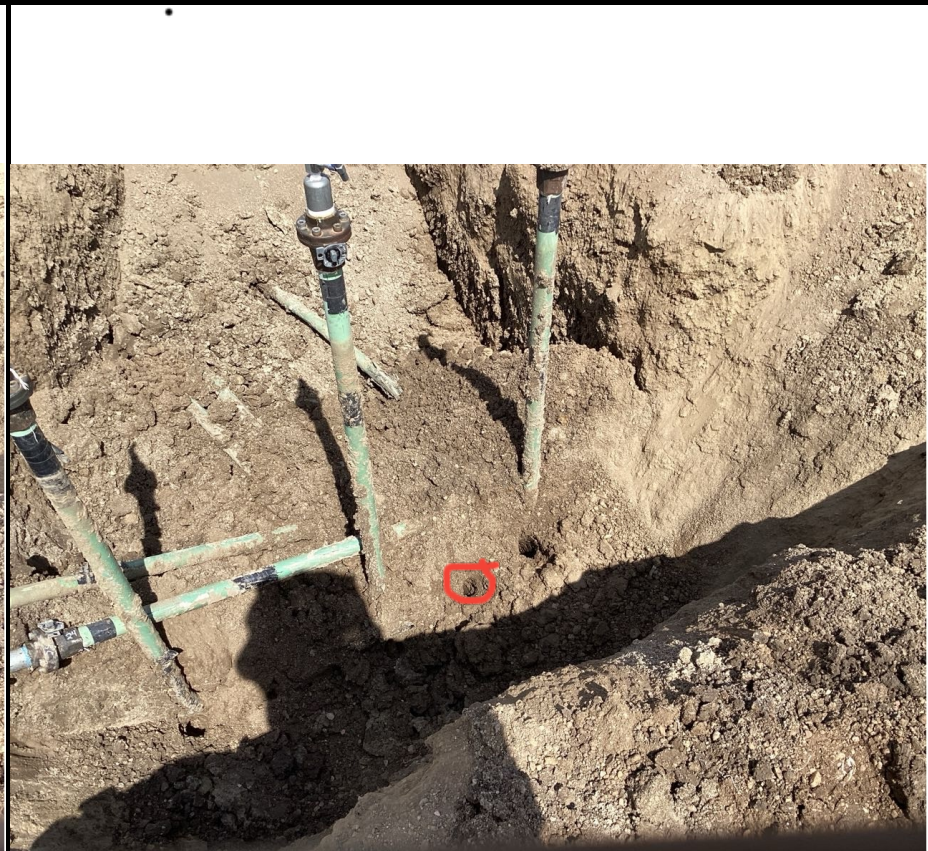
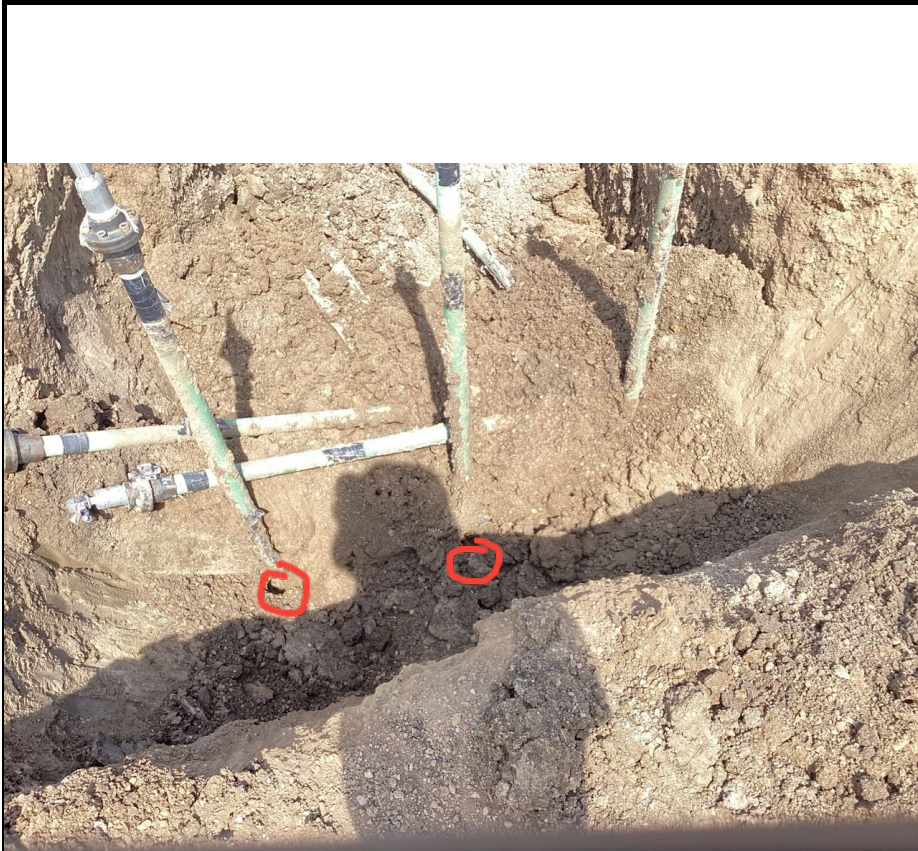
Equipment ID: MH01 @ 0-6"	Equipment Type:	
Material: Steel	Volume:	Contents:
Notes/Conditions: FACING NORTH		

Equipment ID: SEP01-DL@5'	Equipment Type: Dump Line	
Material: Steel	Volume:	Contents: Oil/Gas/Water
Notes/Conditions: FACING EAST		



Equipment ID: SEP01-FL risers		Equipment Type: Flowline	
Material:	Volume:	Contents:	
Notes/Conditions: FACING NORTH			

Equipment ID: SEP01-FL01 @4.5'		Equipment Type: Flowline	
Material: Steel	Volume:	Contents: Oil/Gas/Water	
Notes/Conditions: FACING NORTH			

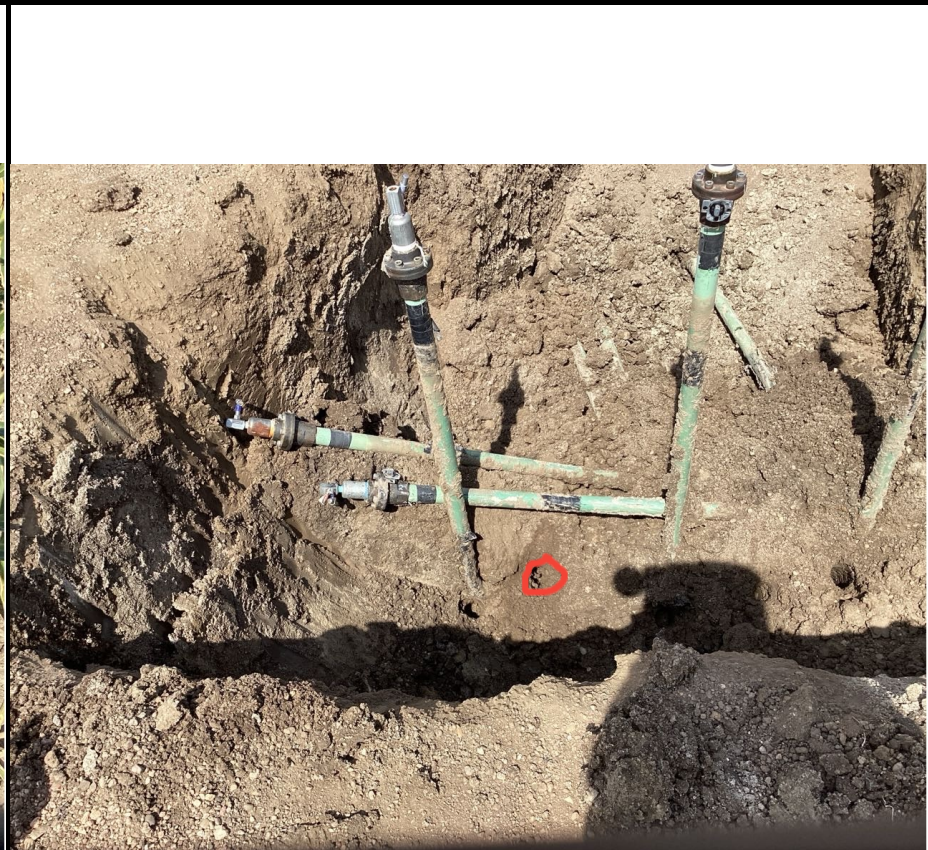
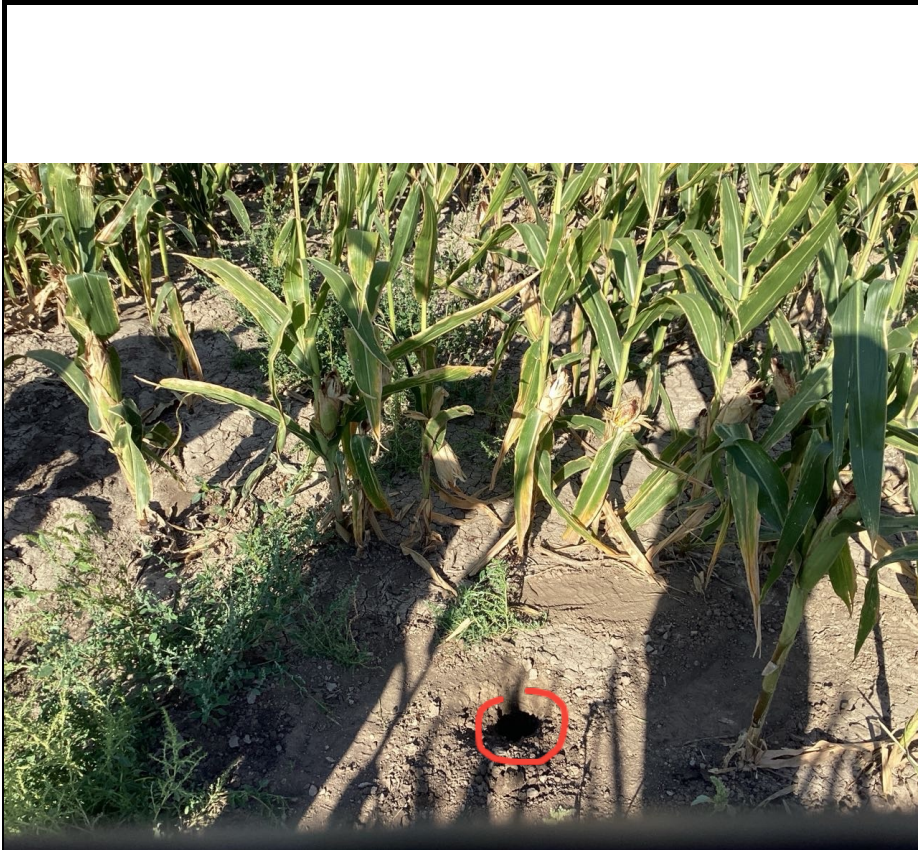


Equipment ID: SEP01-FL02@4.5'	Equipment Type: Flowline
Material: Steel	Volume:
Contents: Oil/Gas/Water	

Notes/Conditions: SEP01-FL02@4.5' on right, SEP01-FL04@4.5' on left, FACING NORTH

Equipment ID: SEP01-FL03@4.5'	Equipment Type: Flowline
Material: Steel	Volume:
Contents: Oil/Gas/Water	

Notes/Conditions: FACING NORTH



Equipment ID: BKG01		Equipment Type:	
Material:	Volume:	Contents:	
Notes/Conditions: FACING WEST			

Equipment ID: SEP01-FL5@4.5'		Equipment Type: Flowline	
Material: Steel	Volume:	Contents: Oil/Gas/Water	
Notes/Conditions: FACING NORTH			



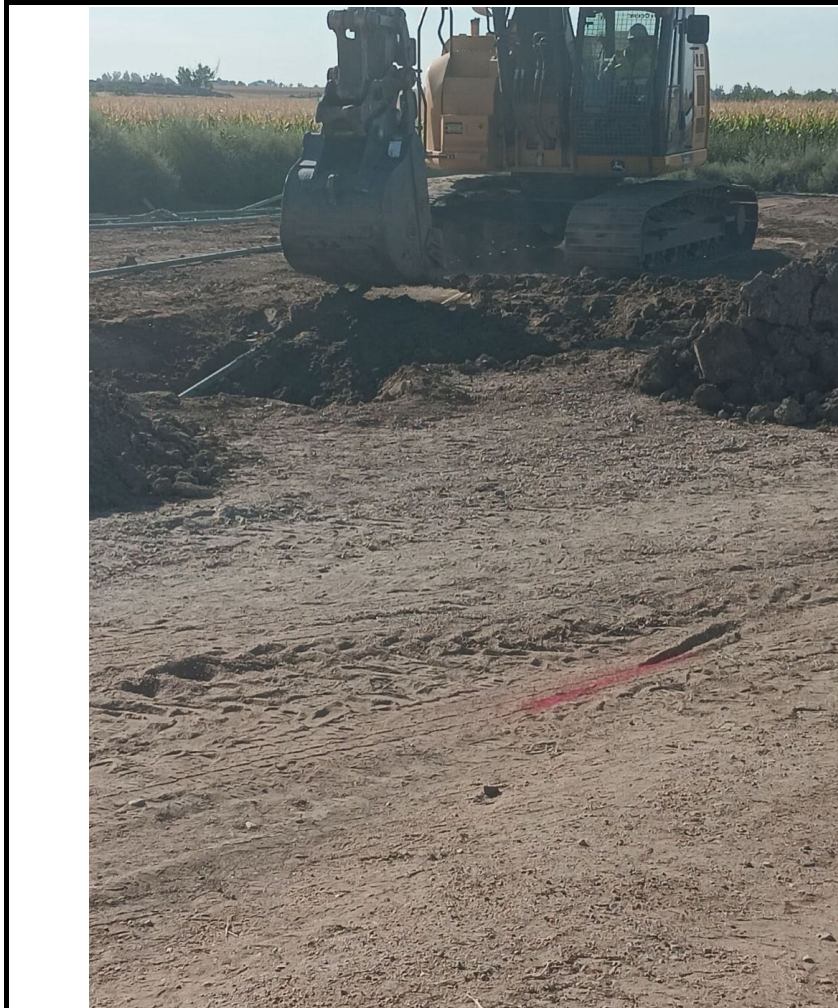
Equipment ID:		Equipment Type:	
Material:	Volume:	Contents:	
Notes/Conditions: AST bottom, taken by crew			

Equipment ID:		Equipment Type:	
Material:	Volume:	Contents:	
Notes/Conditions: AST bottom, taken by crew			



Equipment ID:		Equipment Type:	
Material:	Volume:	Contents:	
Notes/Conditions: AST bottom, taken by crew			

Equipment ID:		Equipment Type:	
Material:	Volume:	Contents:	
Notes/Conditions: Dumplines being removed			



Equipment ID:		Equipment Type:		Equipment ID:		Equipment Type:	
Material:	Volume:	Contents:		Material:	Volume:	Contents:	
Notes/Conditions: Dumplines being removed from facility pad				Notes/Conditions:			



SITE NAME: Land 31-13, 17, 19, 24, 36D Flowline							DATE: 9/17/2024	REM. PROJECT #: 33835	WEATHER: Sunny 70	
SITE DIRECTIONS: CR 16 X CR 49, 0.75 MI N, E INTO							CLIENT: PDC			
LEGALS AND LAT/LONG: 40.088426, -104.602473							TASMAN PERSONNEL: S. Walus, M. Parks			
SOIL TYPES: Well Graded Sand - SW							SURFACE GRADIENT: Southeast			
SOIL SAMPLING							FACILITY INFRASTRUCTURE			
Date/Time	Soil Sample ID	PID (ppm)	Visual	Olfactory	Photo?	Grab or Lab Sample?	EQUIPMENT	Quantity	Photo?	
							Above Ground Storage Tank (AST)			
9/17/2024 08:49	FL02R-W@3'	0.1	No Staining	No Odor	Yes	Lab	Buried or Partially Buried Vessel			
9/17/2024 08:51	FL02-06@3'	0.1	No Staining	No Odor	Yes	Lab	Separator			
9/17/2024 09:39	FL06-05@2'	0.0	No Staining	No Odor	Yes	Lab	Emission Control Device (ECD)			
9/17/2024 09:41	FL07-05@2'	0.0	No Staining	No Odor	Yes	Lab	Dump Line			
9/17/2024 11:00	FL03-06@3'	0.0	No Staining	No Odor	Yes	Lab	Wellhead	10	✓	
9/17/2024 11:01	FL03R-W@3'	0.0	No Staining	No Odor	Yes	Lab	Flowline	7	✓	
9/17/2024 11:21	FL04-06@3'	0.0	No Staining	No Odor	Yes	Lab	Other:			
9/17/2024 11:23	FL04R-W@3'	0.7	No Staining	No Odor	Yes	Lab	Soil Loads Removed			
9/17/2024 11:25	FL07-06@3'	0.0	No Staining	No Odor	Yes	Lab	IMPACTED SOIL IDENTIFIED?			
9/17/2024 11:33	FL07-08@3'	0.0	No Staining	No Odor	Yes	Lab	ESTIMATED VOLUME OF IMPACTS:			
9/17/2024 11:41	FL01R-W@3'	0.0	No Staining	No Odor	Yes	Lab	Date	Number	CY	
9/17/2024 11:43	FL06R-W@3'	0.7	No Staining	No Odor	Yes	Lab				
9/17/2024 11:53	FL05R-W@3'	0.2	No Staining	Organic Odor	Yes	Lab				
9/17/2024 12:00	FL07R-W@3'	0.0	No Staining	No Odor	Yes	Lab				
9/17/2024 12:04	FL01-04R@4.5'	0.0	No Staining	No Odor	Yes	Lab				
9/17/2024 12:21	FL02-04R@4.5	0.3	No Staining	No Odor	Yes	Lab	Total Removed	0	0	
9/17/2024 12:24	FL03-04R@4.5	0.2	No Staining	No Odor	Yes	Lab	Disposal Facility:			
9/17/2024 12:26	FL04-04R@4.5	0.0	No Staining	No Odor	Yes	Grab	Groundwater Recovery			
9/17/2024 12:27	FL05-04R@4.5	0.1	No Staining	No Odor	Yes	Lab	DATE GW ENCOUNTERED:	DEPTH:		
9/17/2024 12:29	FL06-04R@4.5	0.0	No Staining	No Odor	Yes	Lab	GROUNDWATER IN CONTACT WITH IMPACTED SOIL?			
9/17/2024 13:31	FL07-04R@4.5	0.2	No Staining	No Odor	Yes	Lab				
9/17/2024 13:34	FL08-06@3'	0.1	No Staining	No Odor	Yes	Lab	LNAPL OR SHEEN OBSERVED ON GW?			
GROUNDWATER SAMPLING							Date	BBLs		
Date/Time	Groundwater Sample ID	Depth Collected	Turbid?	Sheen?	Odor?	Photo?				
							Total Removed	0		
							Disposal Facility:			

GENERAL OBSERVATION FORM

 Site Area/AOC: Land 31-13, 17, 19, 24, 36D Flowline Client: PDC

 Daily Forecast/Weather: Sunny 70 Personnel: S. Walus, M. Parks

Task/Location Description: _____

Time	Description
08:01	Arrived on site, JSA was filled out and met with crew to go over todays scope
	Crew began to dig up wellhead and risers
	Crew went to northern end of WH pad to redig and sample FL06 and FL07
	Crew dug all 10 wellheads up for us to sample
16:01	left site
	-Crew cut and capped FL01-07, FL02-07, FL03-07, FL04-05, and FL05-07 yesterday after we left site we will need to reach out to the chevron rep for photos to complete the form 44 due to these flowlines being ABIP until crop season is over
	-All lines on the wellhead pad have been removed
	-Line ABIP from FL01-05 to FL01-07, FL02-05-FL02-07, FL03-05-FL03-07, FL04-05-FL04-07, FL05-05-FL05-05
	-These first five lines share a common trench with FL06 flowline and FL08 flowline
	As we progressed we ran into five more existing Flowlines that are to be removed today
	Land 31-20D, land 31-12D, land 31-18D, land 31-32D and land 31-35
	Land 31-20D and land 31-13D share the same flowline but go to two separate wellheads right next to each other (T pipe)
	Crew pulled flowlines for existing 04-05 points. Need to redig so we can resubmit samples to the lab and sample exist two line
	Land 31-12D will be named FL06
	Land 31-18D will be named FL07
	Land 31-20D will be named FL08
	All new flowlines be added to imagery will correspond to exist location numbers to lessen confusion
	The redig of samples at 04 location will be changed to 04R on the map
	FL04, FL08 and FL09 are all connected to the same flowline in the field
	FL09 (31-32D abandon in place) older
	FL10 (31-35 old abip with a cross)
	09.18.24
08:01	On Site/Started JSA/ Scope: background sampling and reviewing and confirming all sample locations have been sampled
	Background Soil Sample lithology:
	0-6": CL dark brown, medium plasticity, dry, no staining organic odor
	1-2.5': SC sandy clay, fine grain, well sort, low plasticity, dry, no staying organic odor
	2.5-3.5': SM Silty sand, light tan, fine grain, well sort, dry, no staining organic odor
	3.5-4.5' SW Well graded sand brown with trace iron, fine grain, poorly sorted dry, no door or staining
	Approximate flowlines drawn in by GIS due to hammer locations creating mulitple flowline patterns going in different directions
	Form 27 proposed imagery did not match up what was presented on site (ex. 31-17D did not have an elbow near WH)

Need photo log?



Equipment ID: FL02R-W@3'		Equipment Type: Wellhead		Equipment ID: FL02-06@3'		Equipment Type: Flowline	
Material: Steel	Volume:	Contents: Oil/Gas/Water		Material: Steel	Volume:	Contents: Oil/Gas/Water	
Notes/Conditions:				Notes/Conditions:			



Equipment ID: FL06-05 @2'		Equipment Type: Flowline	
Material: Steel	Volume:	Contents: Oil/Gas/Water	
Notes/Conditions: South facing s			

Equipment ID: FL07-05 @2'		Equipment Type: Flowline	
Material: Steel	Volume:	Contents: Oil/Gas/Water	
Notes/Conditions: South facing			



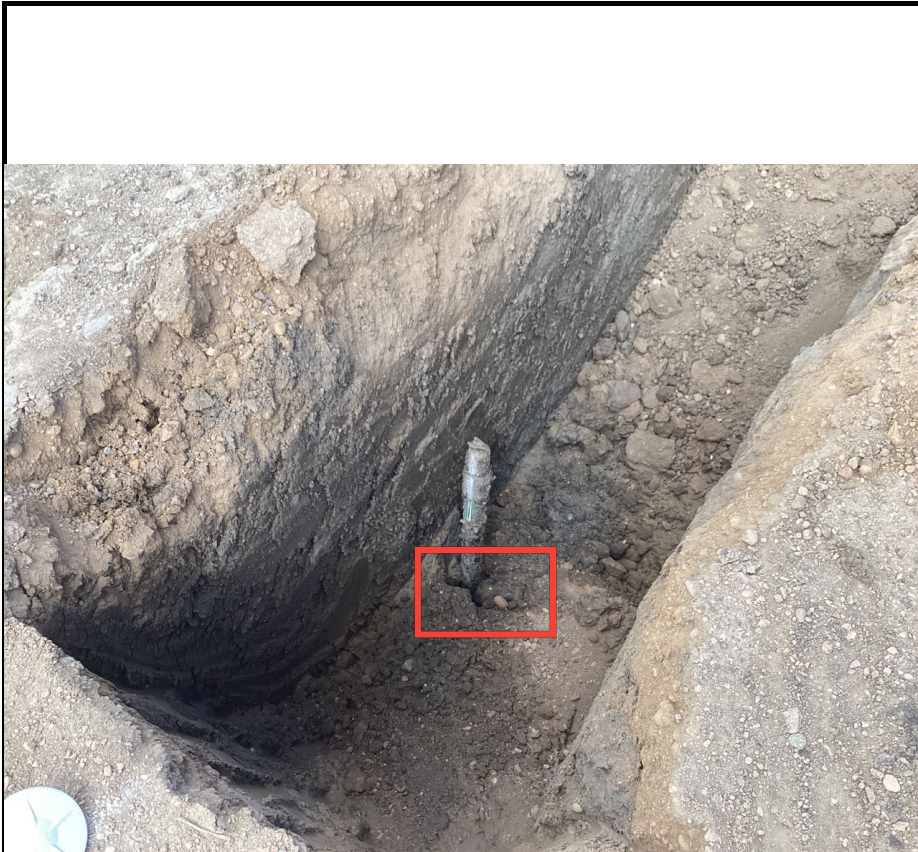
Equipment ID: FL03R-W & FL03-06		Equipment Type: Wellhead	
Material: Steel	Volume:	Contents: Oil/Gas/Water	
Notes/Conditions:			

Equipment ID: FL04R-W & FL04-06		Equipment Type: Wellhead	
Material: Steel	Volume:	Contents: Oil/Gas/Water	
Notes/Conditions:			



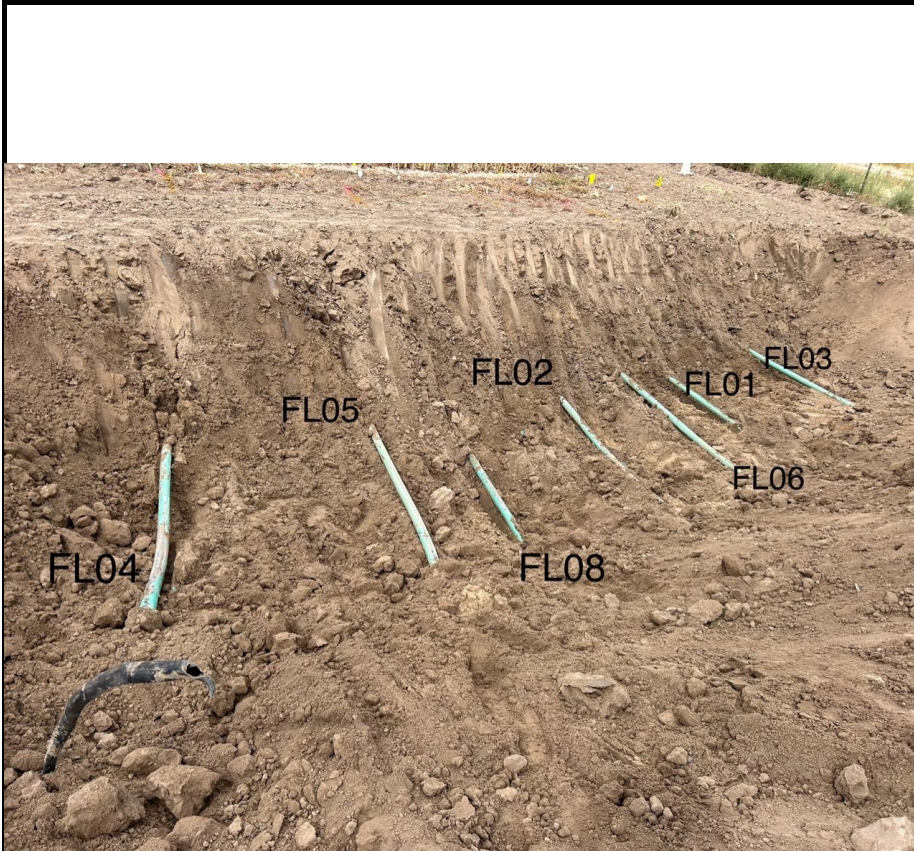
Equipment ID: FL07-06/07@3'	Equipment Type: Flowline	
Material: Steel	Volume:	Contents: Oil/Gas/Water
Notes/Conditions: 07 crosses over existing flowline so will be submitting to the lab		

Equipment ID: FL01R-W@3'	Equipment Type: Wellhead	
Material: Steel	Volume:	Contents: Oil/Gas/Water
Notes/Conditions:		



Equipment ID: FL06R-W@3'		Equipment Type: Wellhead	
Material: Steel	Volume:	Contents: Oil/Gas/Water	
Notes/Conditions:			

Equipment ID: FL05R-W@3'		Equipment Type: Wellhead	
Material: Steel	Volume:	Contents: Oil/Gas/Water	
Notes/Conditions:			



Equipment ID:		Equipment Type: ^{Flowline}	
Material: ^{Steel}	Volume:	Contents: ^{Oil/Gas/Water}	
Notes/Conditions: This was taken before existing lines had been cut and capped for ABIP			

Equipment ID: FL07R-W@3'		Equipment Type: ^{Wellhead}	
Material: ^{Steel}	Volume:	Contents: ^{Oil/Gas/Water}	
Notes/Conditions:			



Equipment ID: FL08R-W & FL08-06		Equipment Type: Wellhead	
Material: Steel	Volume:	Contents: Oil/Gas/Water	
Notes/Conditions:			



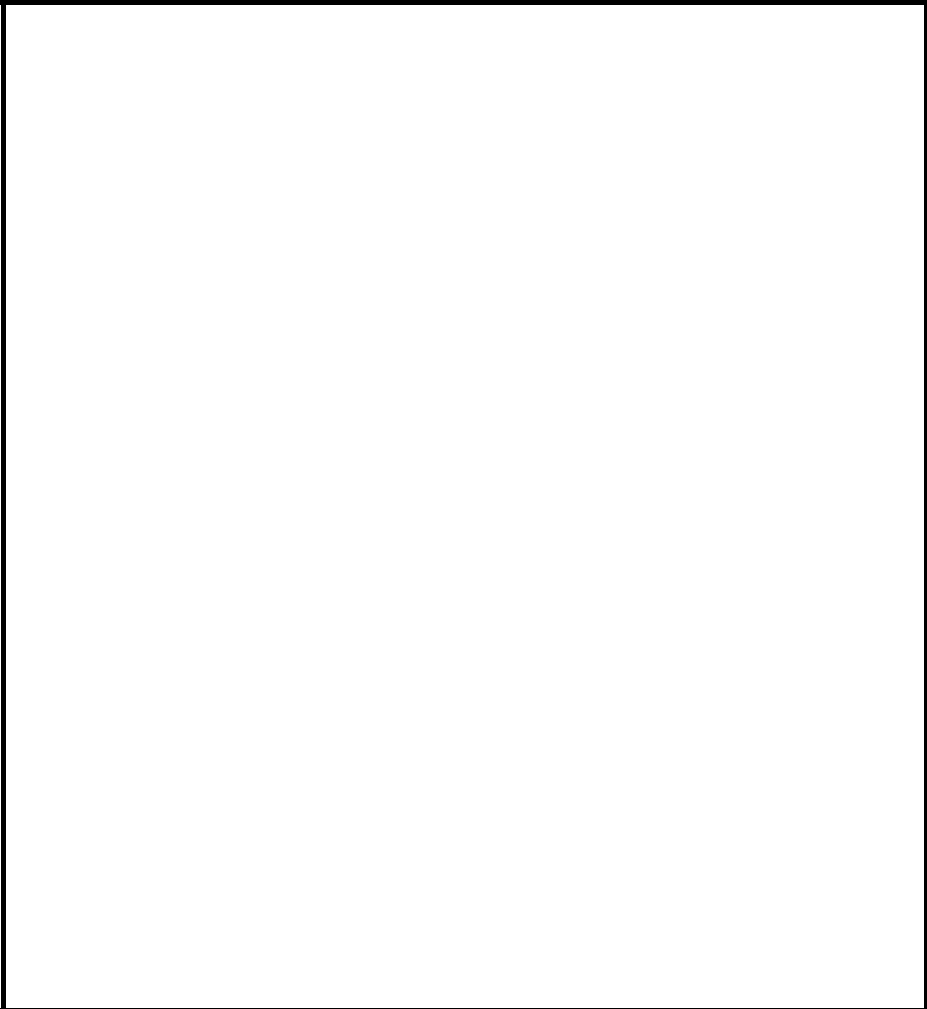
Equipment ID: FL0R-W@3'		Equipment Type: Wellhead	
Material: Steel	Volume:	Contents: Oil/Gas/Water	
Notes/Conditions:			



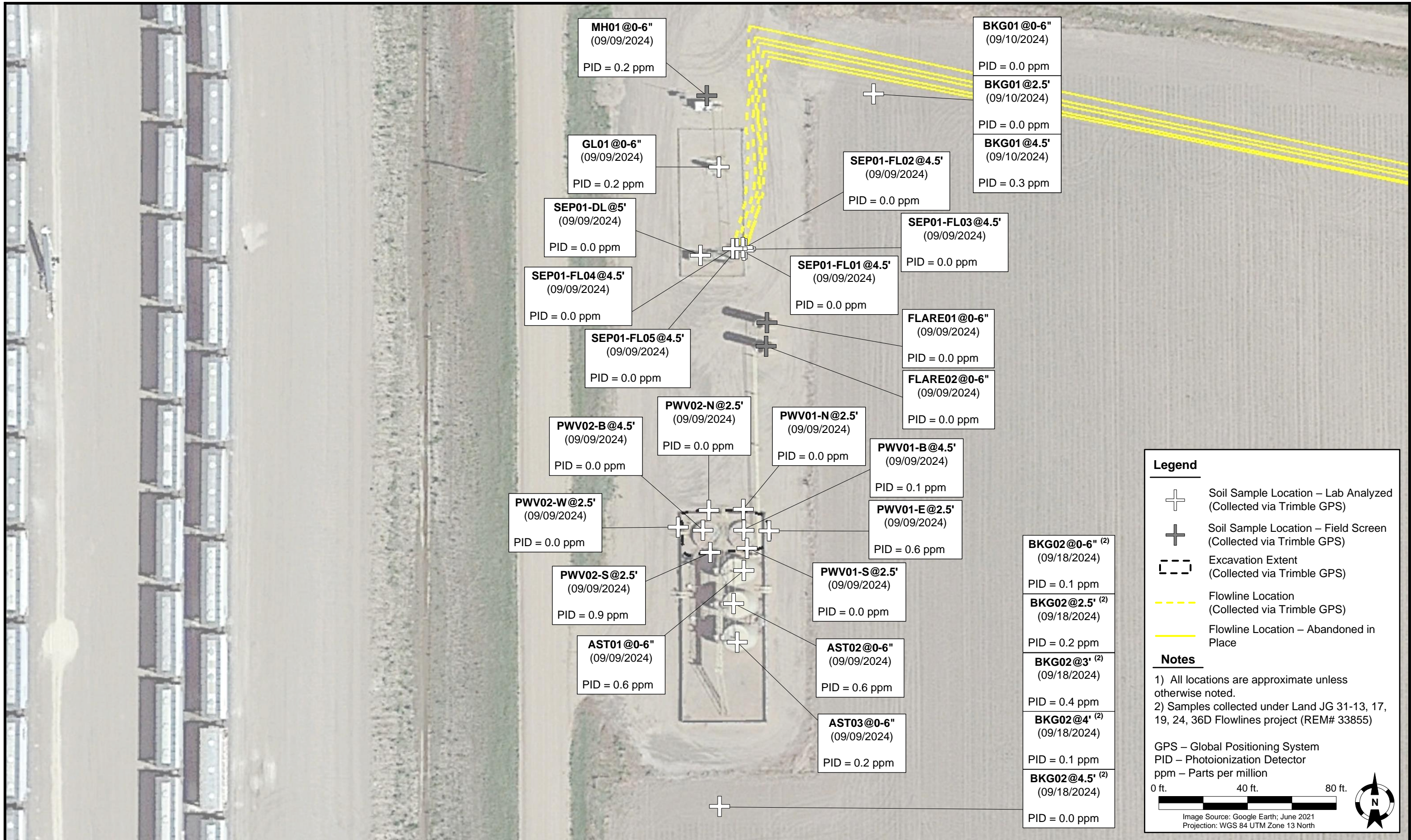
Equipment ID: FL10-06@3'		Equipment Type: Flowline		Equipment ID: FL10R-W@3'		Equipment Type: Wellhead	
Material: Steel	Volume:	Contents: Oil/Gas/Water		Material: Steel	Volume:	Contents: Oil/Gas/Water	
Notes/Conditions:				Notes/Conditions:			



Equipment ID: BKG02		Equipment Type:	
Material:	Volume:	Contents:	
Notes/Conditions: BKG02 was taken at near the facility pad in native soil by the cornfield. Background samples were not collected near the wellhead due to the pad being so large and not in native soil			



Equipment ID:		Equipment Type:	
Material:	Volume:	Contents:	
Notes/Conditions:			



DATE: September 10, 2024

DESIGNED BY: C. Hamlin

DRAWN BY: L. Reed

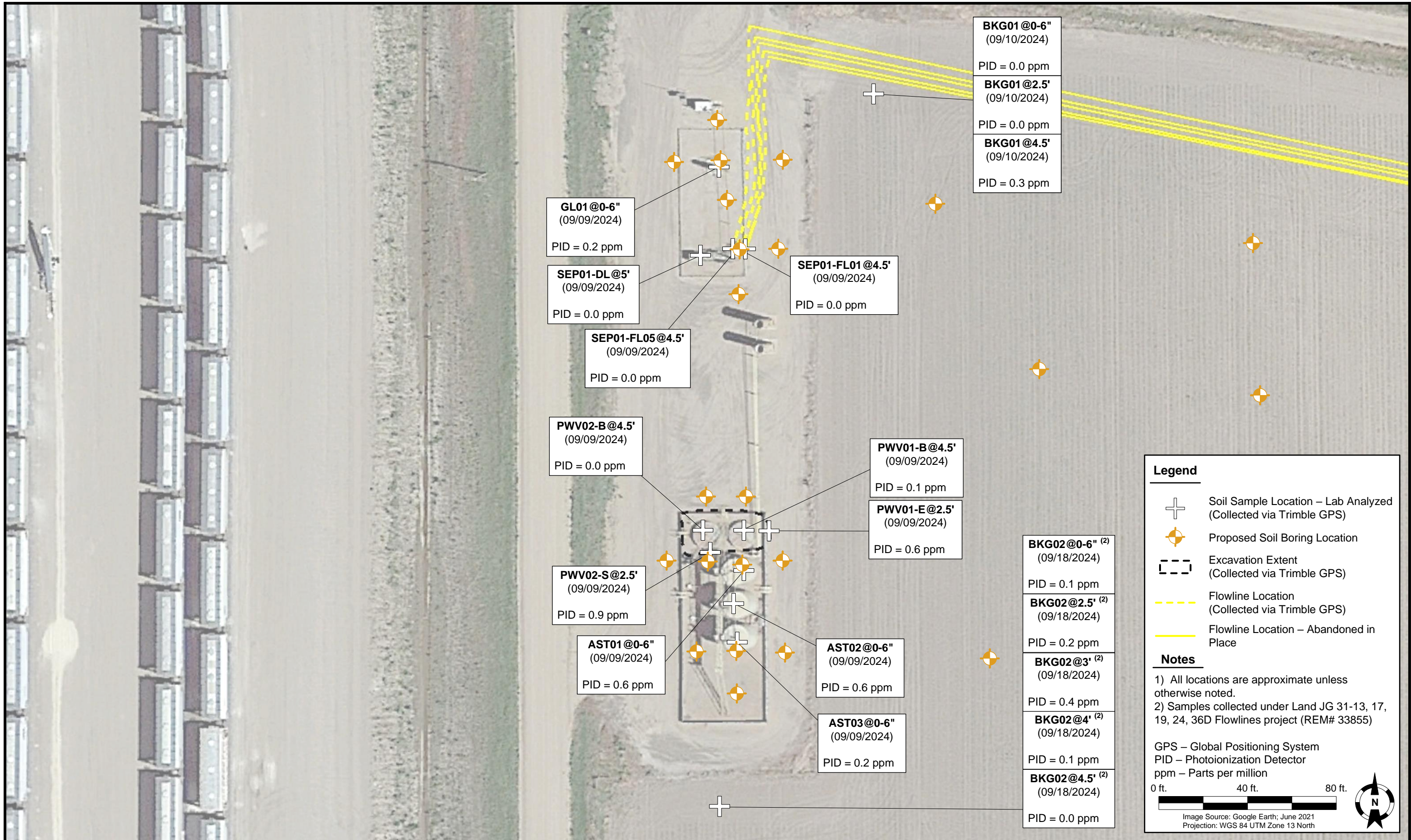


Tasman, Inc.
 6855 W. 119th Ave.
 Broomfield, CO 80020

PDC Energy, Inc. – DJ Basin
Former Land 31-13, 17, 19, 24, 36D Tank Battery
 SWSW, Section 31, Township 2 North, Range 64 West
 Weld County, Colorado

SOIL SAMPLE LOCATION MAP (TANK BATTERY)

FIGURE 1



DATE: December 4, 2024

DESIGNED BY: C. Hamlin

DRAWN BY: J. Marcus



Tasman, Inc.
 6855 W. 119th Ave.
 Broomfield, CO 80020

PDC Energy, Inc. – DJ Basin
Former Land 31-13, 17, 19, 24, 36D Tank Battery
 SWSW, Section 31, Township 2 North, Range 64 West
 Weld County, Colorado

PROPOSED SOIL BORING LOCATION MAP

FIGURE 2

TABLE 1
FIELD DATA SUMMARY TABLE
NOBLE ENERGY INC. - 100322
LAND 31-13, 17, 19, 24, 36D TANK BATTERY, WELD COUNTY, COLORADO
REM #33833



Sample ID	Sample Date	Depth (ft. bgs)	GPS Data ⁽¹⁾		PDOP Value	VOC Concentration ⁽²⁾ (ppm)
			Latitude/Longitude			
AST01@0-6"	9/9/2024	0-0.5	40.088608	-104.602359	0.9	0.6
AST02@0-6"	9/9/2024	0-0.5	40.088568	-104.602376	0.9	0.6
AST03@0-6"	9/9/2024	0-0.5	40.088519	-104.602371	0.9	0.2
PWV01-B@4.5'	9/9/2024	4.5	40.088658	-104.602359	NC	0.1
PWV01-N@2.5'	9/9/2024	2.5	40.088685	-104.602359	0.9	0.0
PWV01-E@2.5'	9/9/2024	2.5	40.088657	-104.602318	0.9	0.6
PWV01-S@2.5'	9/9/2024	2.5	40.088636	-104.602354	0.9	0.0
PWV02-B@4.5'	9/9/2024	4.5	40.088658	-104.602427	NC	0.0
PWV02-N@2.5'	9/9/2024	2.5	40.088683	-104.602416	0.9	0.0
PWV02-S@2.5'	9/9/2024	2.5	40.088631	-104.602414	0.9	0.9
PWV02-W@2.5'	9/9/2024	2.5	40.088662	-104.602465	0.9	0.0
SEP01-DL@4.5'	9/9/2024	4.5	40.088999	-104.602426	0.8	0.0
SEP01-FL01@4.5' ^[3]	9/9/2024	4.5	40.089006	-104.602355	0.8	0.0
SEP01-FL02@4.5' ^[4]	9/9/2024	4.5	40.089007	-104.602360	0.8	0.0
SEP01-FL03@4.5' ^[5]	9/9/2024	4.5	40.089006	-104.602357	0.8	0.0
SEP01-FL04@4.5' ^[6]	9/9/2024	4.5	40.089007	-104.602374	0.8	0.0
SEP01-FL05@4.5' ^[7]	9/9/2024	4.5	40.089007	-104.602368	0.8	0.0
GL01@0-6"	9/9/2024	0-0.5	40.089109	-104.602396	1.0	0.2
FLARE01@0-6"	9/9/2024	0-0.5	40.088916	-104.602320	0.8	0.0
FLARE02@0-6"	9/9/2024	0-0.5	40.088885	-104.602321	0.8	0.0
MH01@0-6"	9/9/2024	0-0.5	40.089197	-104.602416	0.9	0.2
BKG01@0-6"	9/10/2024	0-0.5	40.089198	-104.602147	0.8	0.0
BKG01@2.5'	9/10/2024	2.5	40.089198	-104.602147	0.8	0.0
BKG01@4.5'	9/10/2024	4.5	40.089198	-104.602147	0.8	0.3
BKG02@0-6" ⁽⁸⁾	9/18/2024	0-0.5	40.088319	-104.602398	0.8	0.1
BKG02@2.5' ⁽⁸⁾	9/18/2024	2.5	40.088319	-104.602398	0.8	0.2
BKG02@3' ⁽⁸⁾	9/18/2024	3	40.088319	-104.602398	0.8	0.4
BKG02@4' ⁽⁸⁾	9/18/2024	4	40.088319	-104.602398	0.8	0.1
BKG02@4.5' ⁽⁸⁾	9/18/2024	4.5	40.088319	-104.602398	0.8	0.0

Notes:

1. Global Positioning System (GPS) data is provided in decimal degrees using North American Datum (NAD) 83 UTM Zone 13 North.
2. Volatile organic compound (VOC) concentrations are measured in the field using a photoionization detector (PID).
3. SEP01-FL01 is associated with Land JG 31-36D Wellhead/Flowline (REM# 33855)
4. SEP01-FL02 is associated with Land JG 31-13D Wellhead/Flowline (REM# 33835)
5. SEP01-FL03 is associated with Land JG 31-24D Wellhead/Flowline (REM# 33835)
6. SEP01-FL04 is associated with Land JG 31-19D Wellhead/Flowline (REM# 33835)
7. SEP01-FL05 is associated with Land JG 31-17D Wellhead/Flowline (REM# 33835)
8. Samples collected under Land JG 31-13, 17, 19, 24, 36D Flowlines project (REM# 33835)

PDOP = Position Dilution of Precision

ppm = Parts per million

ft. = Feet

bgs = Below ground surface

NC = Data not collected

TABLE 2
SUMMARY OF VOLATILE ORGANIC SOIL CHEMISTRY DATA
NOBLE ENERGY INC. - 100322
LAND 31-13, 17, 19, 24, 36D TANK BATTERY, WELD COUNTY, COLORADO
REM # 33833



Sample ID	Sample Date	Depth (ft. bgs)	Benzene (mg/kg)	Toluene (mg/kg)	Ethyl-Benzene (mg/kg)	Xylenes (mg/kg)	1,2,4-Trimethyl-Benzene (mg/kg)	1,3,5-Trimethyl-Benzene (mg/kg)	Naphthalene (mg/kg)	TPH (mg/kg)	TPH GRO (mg/kg)	TPH DRO (mg/kg)	TPH ORO (mg/kg)
ECMC Table 915-1 Limits (Residential SSL)			1.2	490	5.8	58	30	27	2	500	500**		
ECMC Table 915-1 Limits (Protection of Groundwater SSL)			0.0026	0.69	0.78	9.9	0.0081	0.0087	0.0038	500	500**		
AST01@0-6"	9/9/2024	0-0.5	<0.0020	<0.0050	<0.0050	<0.010	<0.0050	<0.0050	<0.0038	<50	<0.50	<50	<50
AST02@0-6"	9/9/2024	0-0.5	<0.0020	<0.0050	<0.0050	<0.010	<0.0050	<0.0050	<0.0038	<50	<0.50	<50	<50
AST03@0-6"	9/9/2024	0-0.5	<0.0020	<0.0050	<0.0050	<0.010	<0.0050	<0.0050	<0.0038	<50	<0.50	<50	<50
PWV01-B@4.5'	9/9/2024	4.5	<0.0020	<0.0050	<0.0050	<0.010	<0.0050	<0.0050	<0.0038	<50	<0.50	<50	<50
PWV01-E@2.5'	9/9/2024	2.5	<0.0020	<0.0050	<0.0050	<0.010	<0.0050	<0.0050	<0.0038	<50	<0.50	<50	<50
PWV02-B@4.5'	9/9/2024	4.5	<0.0020	<0.0050	<0.0050	<0.010	<0.0050	<0.0050	<0.0038	<50	<0.50	<50	<50
PWV02-S@2.5'	9/9/2024	2.5	<0.0020	<0.0050	<0.0050	<0.010	<0.0050	<0.0050	<0.0038	<50	<0.50	<50	<50
SEP01-DL@4.5'	9/9/2024	4.5	<0.0020	<0.0050	<0.0050	<0.010	<0.0050	<0.0050	<0.0038	<50	<0.50	<50	<50
SEP01-FL01@4.5 ^[1]	9/9/2024	4.5	<0.0020	<0.0050	<0.0050	<0.010	<0.0050	<0.0050	<0.0038	<50	<0.50	<50	<50
SEP01-FL02@4.5 ^[2]	9/9/2024	4.5	<0.0020	<0.0050	<0.0050	<0.010	<0.0050	<0.0050	<0.0038	<50	<0.50	<50	<50
SEP01-FL03@4.5 ^[3]	9/9/2024	4.5	<0.0020	<0.0050	<0.0050	<0.010	<0.0050	<0.0050	<0.0038	<50	<0.50	<50	<50
SEP01-FL04@4.5 ^[4]	9/9/2024	4.5	<0.0020	<0.0050	<0.0050	<0.010	<0.0050	<0.0050	<0.0038	<50	<0.50	<50	<50
SEP01-FL05@4.5 ^[5]	9/9/2024	4.5	<0.0020	<0.0050	<0.0050	<0.010	<0.0050	<0.0050	<0.0038	<50	<0.50	<50	<50
GL01@0-6"	9/9/2024	0-0.5	<0.0020	<0.0050	<0.0050	<0.010	<0.0050	<0.0050	<0.0038	<50	<0.50	<50	<50

Notes:

1. SEP01-FL01 is associated with Land JG 31-36D Wellhead/Flowline (REM# 33855)
2. SEP01-FL02 is associated with Land JG 31-13D Wellhead/Flowline (REM# 33835)
3. SEP01-FL03 is associated with Land JG 31-24D Wellhead/Flowline (REM# 33835)
4. SEP01-FL04 is associated with Land JG 31-19D Wellhead/Flowline (REM# 33835)
5. SEP01-FL05 is associated with Land JG 31-17D Wellhead/Flowline (REM# 33835)

ECMC = Energy & Carbon Management Commission

(<) = Analytical result is less than the indicated laboratory reporting limit.

TPH-GRO = Total petroleum hydrocarbons - gasoline range organics

TPH-DRO = Total petroleum hydrocarbons - diesel range organics

TPH-ORO = Total petroleum hydrocarbons - oil range organics

mg/kg = Milligrams per kilogram

ft. = Feet

bgs = Below ground surface

** Summation of GRO+DRO+ORO must be less than 500 mg/kg.

TABLE 3
SUMMARY OF POLYCYCLIC AROMATIC HYDROCARBON SOIL CHEMISTRY DATA
NOBLE ENERGY INC. -100322
LAND 31-13, 17, 19, 24, 36D TANK BATTERY, WELD COUNTY, COLORADO
REM #33833



Sample ID	Sample Date	Depth (ft. bgs)	Acenaphthene (mg/kg)	Anthracene (mg/kg)	Benzo (a) Anthracene (mg/kg)	Benzo (a) Pyrene (mg/kg)	Benzo (b) Fluoranthene (mg/kg)	Benzo (k) Fluoranthene (mg/kg)	Chrysene (mg/kg)	Dibenzo (a,h) Anthracene (mg/kg)	Fluoranthene (mg/kg)	Fluorene (mg/kg)	Indeno (1,2,3-cd) Pyrene (mg/kg)	Pyrene (mg/kg)	1-Methyl - Naphthalene (mg/kg)	2-Methyl- Naphthalene (mg/kg)
ECMC Table 915-1 Limits (Residential SSL)			360	1,800	1.1	0.11	1.1	11	110	0.11	240	240	1.1	180	18	24
ECMC Table 915-1 Limits (Protection of Groundwater SSL)			0.55	5.8	0.011	0.24	0.3	2.9	9	0.096	8.9	0.54	0.98	1.3	0.006	0.019
AST01@0-6"	9/9/2024	0-0.5	<0.00500	<0.00500	<0.00500	<0.00500	<0.00500	<0.00500	<0.00500	<0.00500	<0.00500	<0.00500	<0.00500	<0.00500	<0.00500	<0.00500
AST02@0-6"	9/9/2024	0-0.5	<0.00500	<0.00500	<0.00500	<0.00500	<0.00500	<0.00500	<0.00500	<0.00500	<0.00500	<0.00500	<0.00500	<0.00500	<0.00500	<0.00500
AST03@0-6"	9/9/2024	0-0.5	<0.00500	<0.00500	<0.00500	<0.00500	<0.00500	<0.00500	<0.00500	<0.00500	<0.00500	<0.00500	<0.00500	<0.00500	<0.00500	<0.00500
PWV01-B@4.5'	9/9/2024	4.5	<0.00500	<0.00500	<0.00500	<0.00500	<0.00500	<0.00500	<0.00500	<0.00500	<0.00500	<0.00500	<0.00500	<0.00500	<0.00500	<0.00500
PWV01-E@2.5'	9/9/2024	2.5	<0.00500	<0.00500	<0.00500	<0.00500	<0.00500	<0.00500	<0.00500	<0.00500	<0.00500	<0.00500	<0.00500	<0.00500	<0.00500	<0.00500
PWV02-B@4.5'	9/9/2024	4.5	<0.00500	<0.00500	<0.00500	<0.00500	<0.00500	<0.00500	<0.00500	<0.00500	<0.00500	<0.00500	<0.00500	<0.00500	<0.00500	<0.00500
PWV02-S@2.5'	9/9/2024	2.5	<0.00500	<0.00500	<0.00500	<0.00500	<0.00500	<0.00500	<0.00500	<0.00500	<0.00500	<0.00500	<0.00500	<0.00500	<0.00500	<0.00500
SEP01-DL@4.5'	9/9/2024	4.5	<0.00500	<0.00500	<0.00500	<0.00500	<0.00500	<0.00500	<0.00500	<0.00500	<0.00500	<0.00500	<0.00500	<0.00500	<0.00500	<0.00500
SEP01-FL01@4.5 ^[1]	9/9/2024	4.5	<0.00500	<0.00500	<0.00500	<0.00500	<0.00500	<0.00500	<0.00500	<0.00500	<0.00500	<0.00500	<0.00500	<0.00500	<0.00500	<0.00500
SEP01-FL02@4.5 ^[2]	9/9/2024	4.5	<0.00500	<0.00500	<0.00500	<0.00500	<0.00500	<0.00500	<0.00500	<0.00500	<0.00500	<0.00500	<0.00500	<0.00500	<0.00500	<0.00500
SEP01-FL03@4.5 ^[3]	9/9/2024	4.5	<0.00500	<0.00500	<0.00500	<0.00500	<0.00500	<0.00500	<0.00500	<0.00500	<0.00500	<0.00500	<0.00500	<0.00500	<0.00500	<0.00500
SEP01-FL04@4.5 ^[4]	9/9/2024	4.5	<0.00500	<0.00500	<0.00500	<0.00500	<0.00500	<0.00500	<0.00500	<0.00500	<0.00500	<0.00500	<0.00500	<0.00500	<0.00500	<0.00500
SEP01-FL05@4.5 ^[5]	9/9/2024	4.5	<0.00500	<0.00500	<0.00500	<0.00500	<0.00500	<0.00500	<0.00500	<0.00500	<0.00500	<0.00500	<0.00500	<0.00500	<0.00500	<0.00500
GL01@0-6"	9/9/2024	0-0.5	<0.00500	<0.00500	<0.00500	<0.00500	<0.00500	<0.00500	<0.00500	<0.00500	<0.00500	<0.00500	<0.00500	<0.00500	<0.00500	<0.00500

Notes:

1. SEP01-FL01 is associated with Land JG 31-36D Wellhead/Flowline (REM# 33835)
2. SEP01-FL02 is associated with Land JG 31-13D Wellhead/Flowline (REM# 33835)
3. SEP01-FL03 is associated with Land JG 31-24D Wellhead/Flowline (REM# 33835)
4. SEP01-FL04 is associated with Land JG 31-19D Wellhead/Flowline (REM# 33835)
5. SEP01-FL05 is associated with Land JG 31-17D Wellhead/Flowline (REM# 33835)

ECMC = Colorado Energy & Carbon Management Commission

(<) = Analytical result is less than the indicated laboratory reporting limit.

ft. = Feet

bgs = Below ground surface

mg/kg = Milligrams per kilogram

TABLE 4
SUMMARY OF SOIL SUITABILITY FOR RECLAMATION



NOBLE ENERGY INC. - 100322
LAND 31-13, 17, 19, 24, 34 D TANK BATTERY, WELD COUNTY, COLORADO
REM #33833

Sample ID	Sample Date	Depth (ft. bgs)	pH (Standard Units)	EC (mmhos/cm)	SAR (Standard Units)	Boron (mg/L)
ECMC Table 915-1 Soil Suitability Limits			6 - 8.3	<4	<6	2
AST01@0-6"	9/9/2024	0-0.5	9.31	0.129	0.599	<2.00
AST02@0-6"	9/9/2024	0-0.5	8.62	0.0968	0.119	<2.00
AST03@0-6"	9/9/2024	0-0.5	10.7	1.38	6.66	<2.00
PWV01-B@4.5'	9/9/2024	4.5	8.45	0.611	1.45	<2.00
PWV01-E@2.5'	9/9/2024	2.5	7.82	2.84	0.550	<2.00
PWV02-B@4.5'	9/9/2024	4.5	8.16	0.748	1.16	<2.00
PWV02-S@2.5'	9/9/2024	2.5	8.86	0.103	0.0252	<2.00
SEP01-DL@4.5'	9/9/2024	4.5	8.21	0.683	1.32	<2.00
SEP01-FL01@4.5' ^[1]	9/9/2024	4.5	8.44	0.389	0.354	<2.00
SEP01-FL02@4.5' ^[2]	9/9/2024	4.5	8.24	0.694	0.360	<2.00
SEP01-FL03@4.5' ^[3]	9/9/2024	4.5	8.15	1.11	0.205	<2.00
SEP01-FL04@4.5' ^[4]	9/9/2024	4.5	8.14	1.18	0.122	<2.00
SEP01-FL05@4.5' ^[5]	9/9/2024	4.5	8.24	0.469	0.166	<2.00
GL01@0-6"	9/9/2024	0-0.5	9.56	0.171	0.570	<2.00
BKG01@0-6"	9/10/2024	0-0.5	7.58	2.36	7.64	<2.00
BKG01@2.5'	9/10/2024	2.5	7.99	2.72	2.70	<2.00
BKG01@4.5'	9/10/2024	4.5	8.45	1.59	6.72	<2.00
BKG02@0-6" ⁽⁶⁾	9/18/2024	0-0.5	8.57	0.554	2.00	<2.00
BKG02@2.5' ⁽⁶⁾	9/18/2024	2.5	7.89	4.17	1.47	<2.00
BKG02@3' ⁽⁶⁾	9/18/2024	3	8.32	1.89	3.07	<2.00
BKG02@4' ⁽⁶⁾	9/18/2024	4	8.63	0.774	2.24	<2.00
BKG02@4.5' ⁽⁶⁾	9/18/2024	4.5	7.74	0.822	3.39	<2.00
Maximum Background Concentration			8.63	4.17	7.64	-

Notes:

1. SEP01-FL01 is associated with Land JG 31-36D Wellhead/Flowline (REM# 33855)
2. SEP01-FL02 is associated with Land JG 31-13D Wellhead/Flowline (REM# 33835)
3. SEP01-FL03 is associated with Land JG 31-24D Wellhead/Flowline (REM# 33835)
4. SEP01-FL04 is associated with Land JG 31-19D Wellhead/Flowline (REM# 33835)
5. SEP01-FL05 is associated with Land JG 31-17D Wellhead/Flowline (REM# 33835)
6. Samples collected under Land JG 31-13, 17, 19, 24, 36D Flowlines project (REM# 33835)

ECMC = Colorado Energy & Carbon Management Commission

EC = Electrical conductivity

SAR = Sodium adsorption ratio

mmhos/cm = millimhos per centimeter

mg/L = milligram per liter

(<) = Analytical result is less than the indicated laboratory reporting limit.

ft. = Feet

bgs = Below ground surface

Bold faced values exceed the ECMC Table 915-1 limit(s), but are within background concentrations.

Bold faced values exceed the ECMC Table 915-1 limit(s) and native background concentrations.

Brown highlighted soil analytical values indicate a regulatory exceedance.

TABLE 5
SUMMARY OF METALS IN SOIL CHEMISTRY DATA
NOBLE ENERGY INC. - 100322
LAND 31-13, 17, 19, 24, 36 D TANK BATTERY, WELD COUNTY, COLORADO
REM #33833



Sample ID	Sample Date	Depth (ft. bgs)	Arsenic (mg/kg)	Barium (mg/kg)	Cadmium (mg/kg)	Chromium (VI) ⁽¹⁾ (mg/kg)	Copper (mg/kg)	Lead (mg/kg)	Nickel (mg/kg)	Selenium (mg/kg)	Silver (mg/kg)	Zinc (mg/kg)
ECMC Table 915-1 Limits (Residential SSL)			0.68	15,000	71	0.3	3,100	400	1,500	390	390	23,000
ECMC Table 915-1 Limits (Protection of Groundwater SSL)			0.29	82	0.38	0.00067	46	14	26	0.26	0.8	370
AST01@0-6"	9/9/2024	0-0.5	2.40	51.1	<0.200	<0.30	6.90	7.02	3.61	<0.260	0.0314	16.3
AST02@0-6"	9/9/2024	0-0.5	1.89	81.6	<0.200	<0.30	5.63	6.50	3.34	<0.260	0.0413	18.4
AST03@0-6"	9/9/2024	0-0.5	1.44	104	<0.200	<0.30	4.58	5.75	3.07	<0.260	0.0415	15.9
PWV01-B@4.5'	9/9/2024	4.5	2.71	83.4	<0.200	<0.30	5.77	7.71	4.44	<0.260	0.0293	16.2
PWV01-E@2.5'	9/9/2024	2.5	4.30	334	0.320	<0.30	8.44	11.4	6.74	<0.260	0.0571	26.7
PWV02-B@4.5'	9/9/2024	4.5	3.68	117	0.228	<0.30	6.30	10.8	5.57	<0.260	0.0402	21.1
PWV02-S@2.5'	9/9/2024	2.5	3.20	111	0.226	<0.30	5.75	7.54	4.80	<0.260	0.0385	18.4
SEP01-DL@4.5'	9/9/2024	4.5	3.30	128	0.246	<0.30	6.26	8.75	5.04	<0.260	0.0467	20.3
SEP01-FL01@4.5 ⁽¹²⁾	9/9/2024	4.5	3.42	156	0.544	<0.30	6.74	8.76	5.47	<0.260	0.0469	25.8
SEP01-FL02@4.5 ⁽¹³⁾	9/9/2024	4.5	3.25	140	0.430	<0.30	6.36	8.65	5.07	<0.260	0.0464	20.7
SEP01-FL03@4.5 ⁽¹⁴⁾	9/9/2024	4.5	3.78	183	0.311	<0.30	6.35	8.93	4.99	<0.260	0.0491	20.9
SEP01-FL04@4.5 ⁽¹⁵⁾	9/9/2024	4.5	3.86	214	0.339	<0.30	7.02	9.94	5.88	<0.260	0.0511	22.8
SEP01-FL05@4.5 ⁽¹⁶⁾	9/9/2024	4.5	6.60	117	3.80	<0.30	8.37	8.94	6.67	<0.260	0.0368	27.1
GL01@0-6"	9/9/2024	0-0.5	1.61	56.7	<0.200	<0.30	4.50	5.26	3.17	<0.260	0.0302	14.0
BKG01@0-6"	9/10/2024	0-0.5	4.03	171	0.421	<0.30	8.47	13.7	6.83	0.309	0.0705	29.3
BKG01@2.5'	9/10/2024	2.5	2.98	108	0.209	<0.30	5.77	7.91	5.35	<0.260	0.0397	20.7
BKG01@4.5'	9/10/2024	4.5	2.16	43.1	<0.180	<0.30	3.01	4.66	3.25	<0.234	0.0206	11.4
BKG02@0-6" ⁽⁷⁾	9/18/2024	0-0.5	4.85	356	0.292	<0.30	7.03	13.5	5.85	<0.260	0.0685	23.4
BKG02@2.5' ⁽⁷⁾	9/18/2024	2.5	6.13	141	0.293	<0.30	7.08	14.4	4.93	<0.236	0.0610	22.1
BKG02@3' ⁽⁷⁾	9/18/2024	3	3.80	110	<0.200	<0.30	5.03	7.49	4.35	<0.260	0.0313	17.5
BKG02@4' ⁽⁷⁾	9/18/2024	4	2.62	41.2	<0.200	<0.30	2.59	3.17	3.32	<0.260	<0.0200	7.62
BKG02@4.5' ⁽⁷⁾	9/18/2024	4.5	2.43	43.1	<0.200	<0.30	3.48	4.38	3.42	<0.260	<0.0200	11.5
Maximum Background Concentration			6.13	356	0.421	-	8.47	14.4	6.83	0.309	0.0705	29.3
Maximum Background Concentration X 1.25			7.66	445	0.526	-	10.6	18.0	8.54	0.386	0.0881	36.6
Mean Background Concentration			3.63	127	0.249	-	5.31	8.65	4.66	0.260	0.0415	17.9
Mean Background Concentration X 1.25			4.53	158	0.311	-	6.63	10.8	5.83	0.325	0.0519	22.4

TABLE 5
SUMMARY OF METALS IN SOIL CHEMISTRY DATA
NOBLE ENERGY INC. - 100322
LAND 31-13, 17, 19, 24, 36 D TANK BATTERY, WELD COUNTY, COLORADO
REM #33833

Sample ID	Sample Date	Depth (ft. bgs)	Arsenic (mg/kg)	Barium (mg/kg)	Cadmium (mg/kg)	Chromium (VI) ⁽¹⁾ (mg/kg)	Copper (mg/kg)	Lead (mg/kg)	Nickel (mg/kg)	Selenium (mg/kg)	Silver (mg/kg)	Zinc (mg/kg)
ECMC Table 915-1 Limits (Residential SSL)			0.68	15,000	71	0.3	3,100	400	1,500	390	390	23,000
ECMC Table 915-1 Limits (Protection of Groundwater SSL)			0.29	82	0.38	0.00067	46	14	26	0.26	0.8	370

Notes:

1. Compound falls within ECMC Table 915-1 Footnote 9.
2. SEP01-FL01 is associated with Land JG 31-36D Wellhead/Flowline (REM# 33855)
3. SEP01-FL02 is associated with Land JG 31-13D Wellhead/Flowline (REM# 33835)
4. SEP01-FL03 is associated with Land JG 31-24D Wellhead/Flowline (REM# 33835)
5. SEP01-FL04 is associated with Land JG 31-19D Wellhead/Flowline (REM# 33835)
6. SEP01-FL05 is associated with Land JG 31-17D Wellhead/Flowline (REM# 33835)
7. Samples collected under Land JG 31-13, 17, 19, 24, 36D Flowlines project (REM# 33835)

ECMC = Energy & Carbon Management Commission

(<) = Analytical result is less than the indicated laboratory reporting limit.

mg/kg = Milligrams per kilogram

ft. = Feet

bgs = Below ground surface

Bold faced values exceed the ECMC Table 915-1 limit(s), but are within 1.25x background concentrations.

Bold faced values exceed the ECMC Table 915-1 limit(s) and native background concentrations.

Red & blue highlighted soil analytical values indicate an exceedance of the referenced soil screening level (SSL).

Non-detect background results accounted for in the highest background concentration by using the reporting limit.