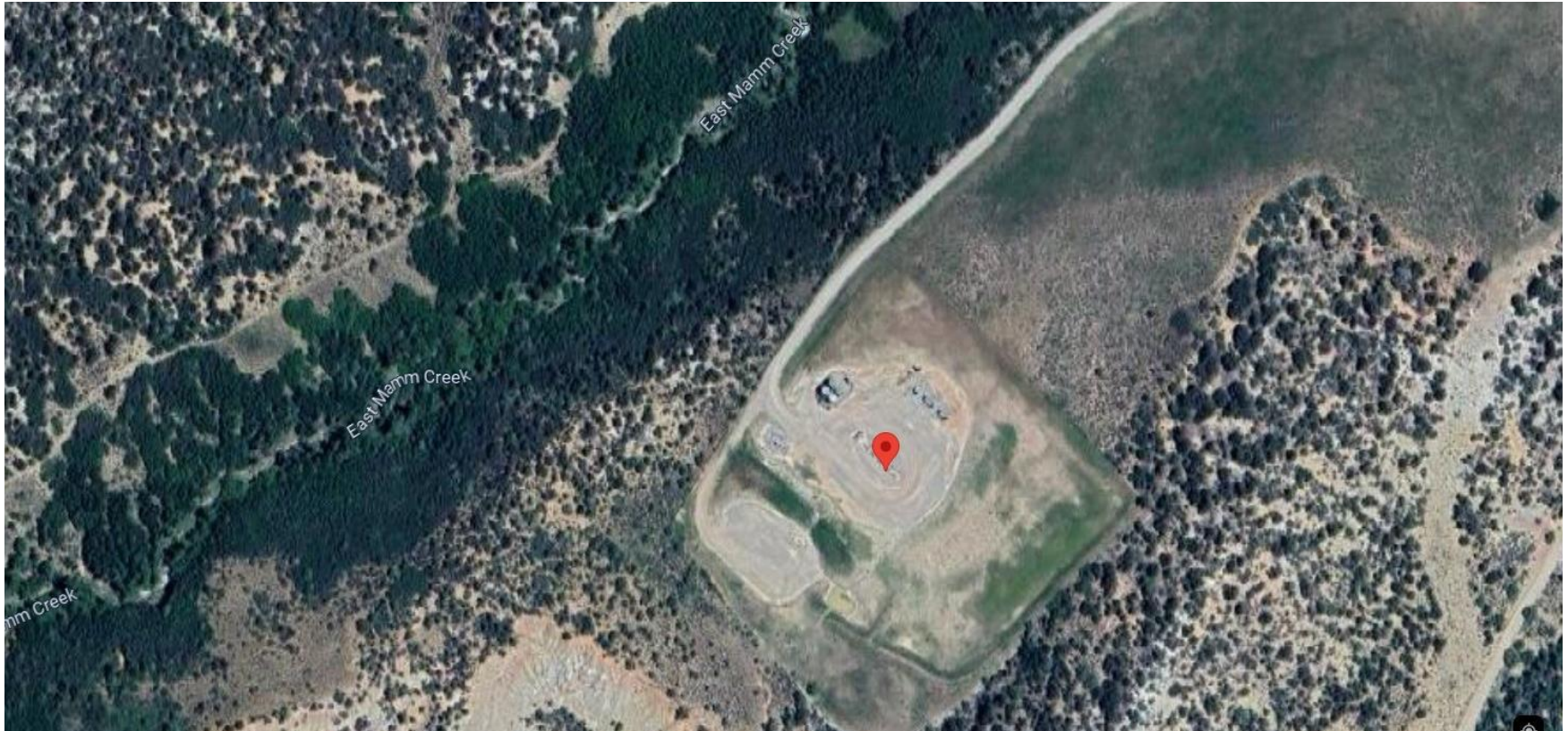


**Storm Water Management and Erosion control**  
**Location Name: QB Energy Mamm Creek J6SEB Pad**  
**Location #: 432265**



**Location Overview: Location is within High Priority/NSO/Black Bear Habitat areas. Location is approximately 135 yards from East Mamm Creek.**

**Section/Township/Range: 6 8S92W**



**COLORADO**  
Energy & Carbon Management  
Commission  
Department of Natural Resources



**Storm water Management and Erosion control**  
**Location Name: QB Energy Mamm Creek J6SEB Pad**  
**Location #: 432265**



**North West corner of location.**



**North East corner of location.**



**South West corner of location.**



**South East corner of location.**