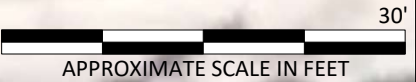


P1T	
6/5/2024	
EC	0.364
SAR	0.142
pH	8.60
Boron	0.222

P2T	
6/5/2024	
EC	0.362
SAR	0.135
pH	8.66
Boron	0.210

P4T	
6/5/2024	
EC	0.296
SAR	0.105
pH	8.57
Boron	0.174

P3T	
6/5/2024	
EC	0.302
SAR	0.116
pH	8.50
Boron	0.147



LEGEND:

 SOIL SAMPLE LOCATION

 SPILL LOCATION

NOTES:
VALUES PRESENTED IN **BOLD** EXCEED CECMC TABLE 915-1 REGULATORY LIMITS
ALL LOCATIONS ARE APPROXIMATE UNLESS NOTED OTHERWISE

CECMC Table 915-1 Soil Screening Levels	
EC	<4 mmhos/cm
SAR	<6
pH	6-8.3
Boron	2 mg/l

CECMC- Colorado Energy & Carbon Management Commission
EC- Electrical conductivity
Mmhos/cm- millimhos per centimeter
Mg/l- milligrams per liter
SAR- Sodium absorption ratio

Imagery source: Google Earth; 2016 Google

PLANCK 1-14H
SOIL SAMPLE LOCATION MAP
ECMC REM #35056
RED HAWK (#10503)

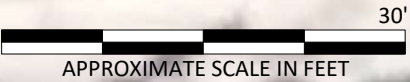
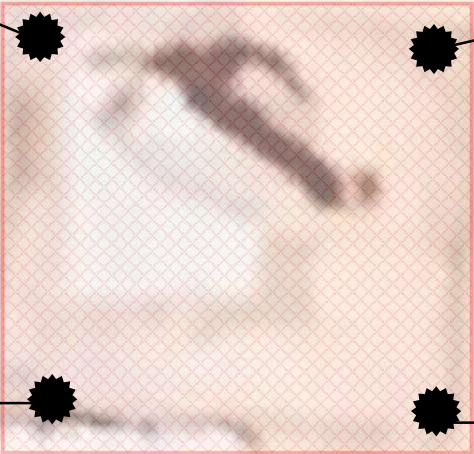


P1T	
6/5/2024	
Benzene	ND
Toluene	ND
Ethylbenzene	ND
Total Xylenes	ND
Naphthalene	ND
1,2,4 TMB	ND
1,3,5 TMB	ND
TPH	ND

P2T	
6/5/2024	
Benzene	ND
Toluene	ND
Ethylbenzene	ND
Total Xylenes	ND
Naphthalene	ND
1,2,4 TMB	ND
1,3,5 TMB	ND
TPH	ND

P4T	
6/5/2024	
Benzene	ND
Toluene	ND
Ethylbenzene	ND
Total Xylenes	ND
Naphthalene	ND
1,2,4 TMB	ND
1,3,5 TMB	ND
TPH	ND

P3T	
6/5/2024	
Benzene	ND
Toluene	ND
Ethylbenzene	ND
Total Xylenes	ND
Naphthalene	ND
1,2,4 TMB	ND
1,3,5 TMB	ND
TPH	ND



LEGEND:

 SOIL SAMPLE LOCATION

 SPILL LOCATION

NOTES:
VALUES PRESENTED IN **BOLD** EXCEED CECMC TABLE 915-1 REGULATORY LIMITS
ALL LOCATIONS ARE APPROXIMATE UNLESS NOTED OTHERWISE

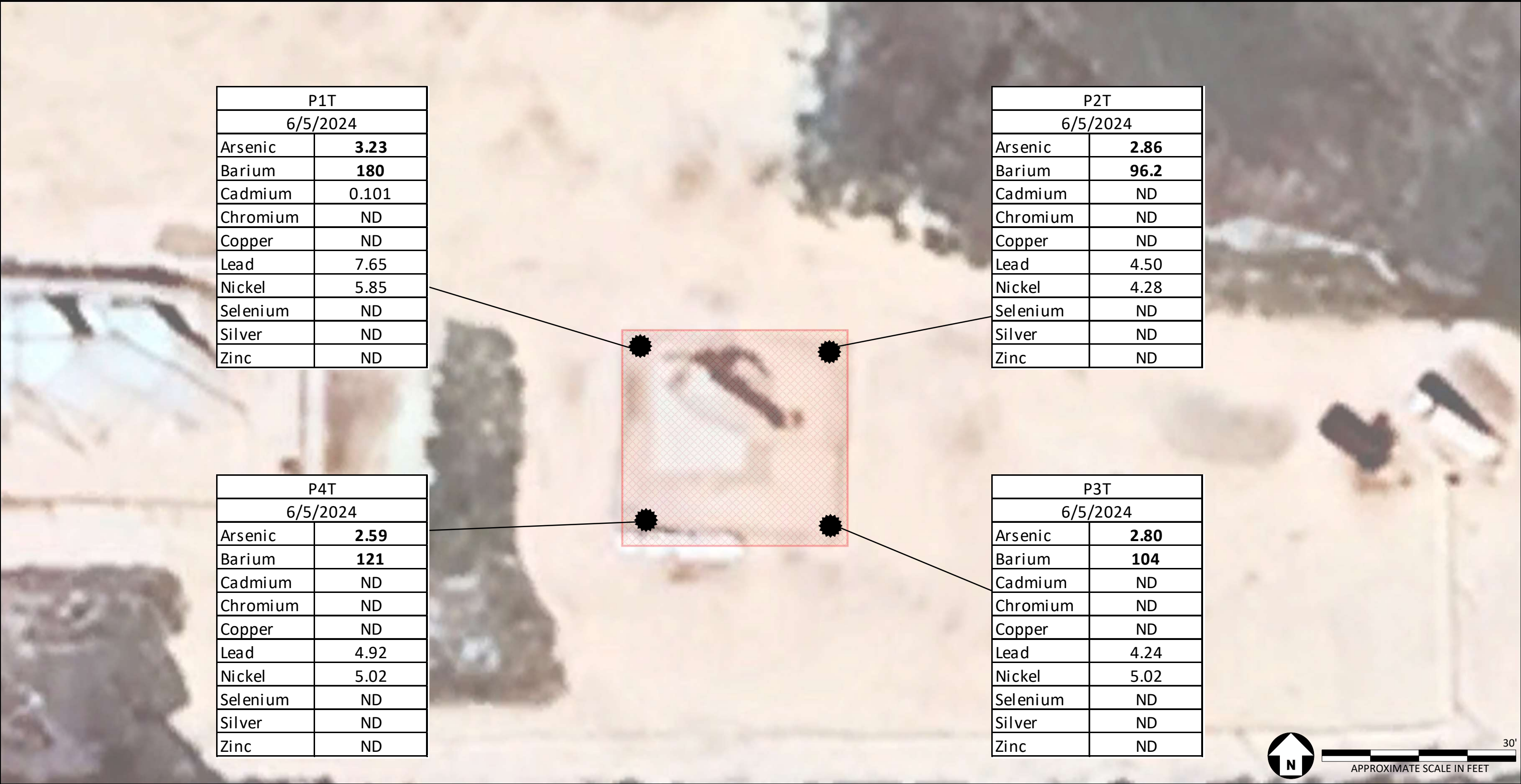
CECMC Table 915-1 Soil Standards		
Compound	Residential (mg/kg)	Protection of Groundwater (mg/kg)
Benzene	1.2	0.0026
Toluene	490	0.69
Ethylbenzene	5.8	0.78
Total Xylenes	58	9.9
Naphthalene	30	0.0081
1,2,4-Trimethylbenzene	27	0.0087
1,3,5-Trimethylbenzene	2	0.0038
TPH	500	500

mg/kg- milligrams per kilogram
TPH- Total Petroleum Hydrocarbons
CECMC- Colorado Energy & Carbon Management Commission
ND- Not detected



Imagery source: Google Earth; 2016 Google

PLANCK 1-14H
SOIL SAMPLE LOCATION MAP
ECMC REM #35056
RED HAWK (#10503)





LEGEND:

-  SOIL SAMPLE LOCATION
-  SPILL LOCATION

NOTES:
VALUES PRESENTED IN **BOLD** EXCEED CECMC TABLE 915-1 REGULATORY LIMITS
ALL LOCATIONS ARE APPROXIMATE UNLESS NOTED OTHERWISE

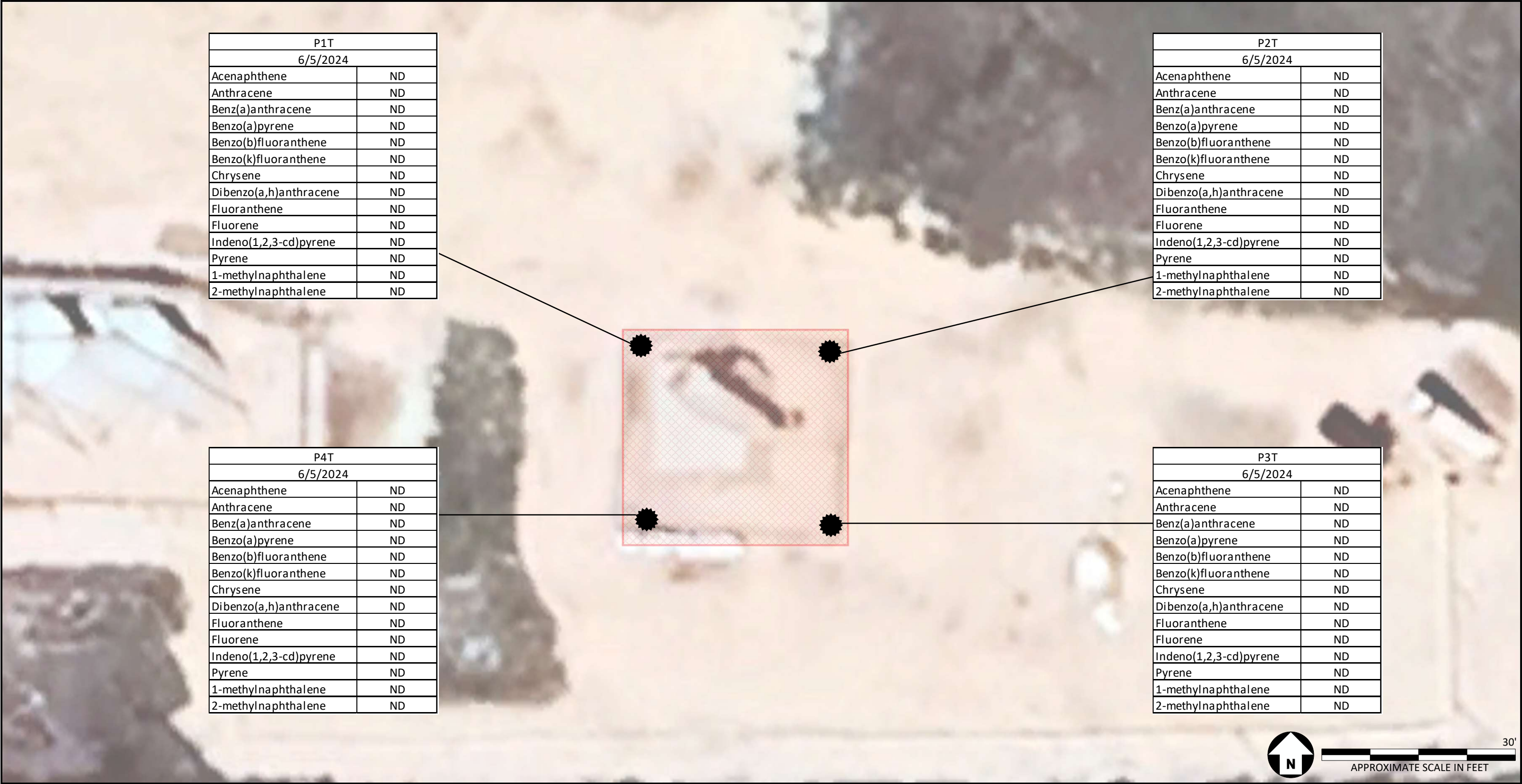
CECMC Table 915-1 Soil Screening Levels		
Compound	Residential (mg/kg)	Protection of Groundwater (mg/kg)
Arsenic	0.68	0.29 (M)
Barium	15000	82 (M)
Cadmium	71	0.38 (M)
Chromium (VI)	0.3	0.00067 (R)
Copper	3100	46 (M)
Lead	400	14 (M)
Nickel	1500	26 (R)
Selenium	390	0.26 (M)
Silver	390	0.8 (R)
Zinc	23000	370 (R)

mg/kg- milligrams per kilogram
(R)- Risk based screening level
(M)- Drinking water maximum
contaminant level
CECMC- Colorado Energy & Carbon
Management Commission

PLANCK 1-14H
SOIL SAMPLE LOCATION MAP
ECMC REM #35056
RED HAWK (#10503)



Imagery source: Google Earth; 2016 Google



LEGEND:

- SOIL SAMPLE LOCATION
- SPILL LOCATION

NOTES:
VALUES PRESENTED IN **BOLD** EXCEED CECMC TABLE 915-1 REGULATORY LIMITS
ALL LOCATIONS ARE APPROXIMATE UNLESS NOTED OTHERWISE

CECMC Table 915-1 Soil Screening Levels		
Compound	Residential (mg/kg)	Protection of Groundwater (mg/kg)
Acenaphthene	360	0.55 (R)
Anthracene	1800	5.8 (R)
Benz(a)anthracene	1.1	0.011 (R)
Benzo(b)fluoranthene	1.1	0.03 (R)
Benzo(k)fluoranthene	11	2.9 (R)
Benzo(a)pyrene	0.11	0.24 (M)
Chrysene	110	9 (R)
Dibenzo(a,h)anthracene	0.11	0.096 (R)
Fluoranthene	240	8.9 (R)
Fluorene	240	0.54 (R)
Indeno(1,2,3-cd)pyrene	1.1	0.98 (R)
Pyrene	180	1.3 (R)
1-methylnaphthalene	18	0.006 (R)
2-methylnaphthalene	24	0.019 (R)

mg/kg- milligrams per kilogram
(R)- Risk based screening level
(M)- Drinking water maximum contaminant level
CECMC- Colorado Energy & Carbon Management Commission

PLANCK 1-14H
SOIL SAMPLE LOCATION MAP
ECMC REM #35056
RED HAWK (#10503)



Imagery source: Google Earth; 2016 Google