



FORM F-106



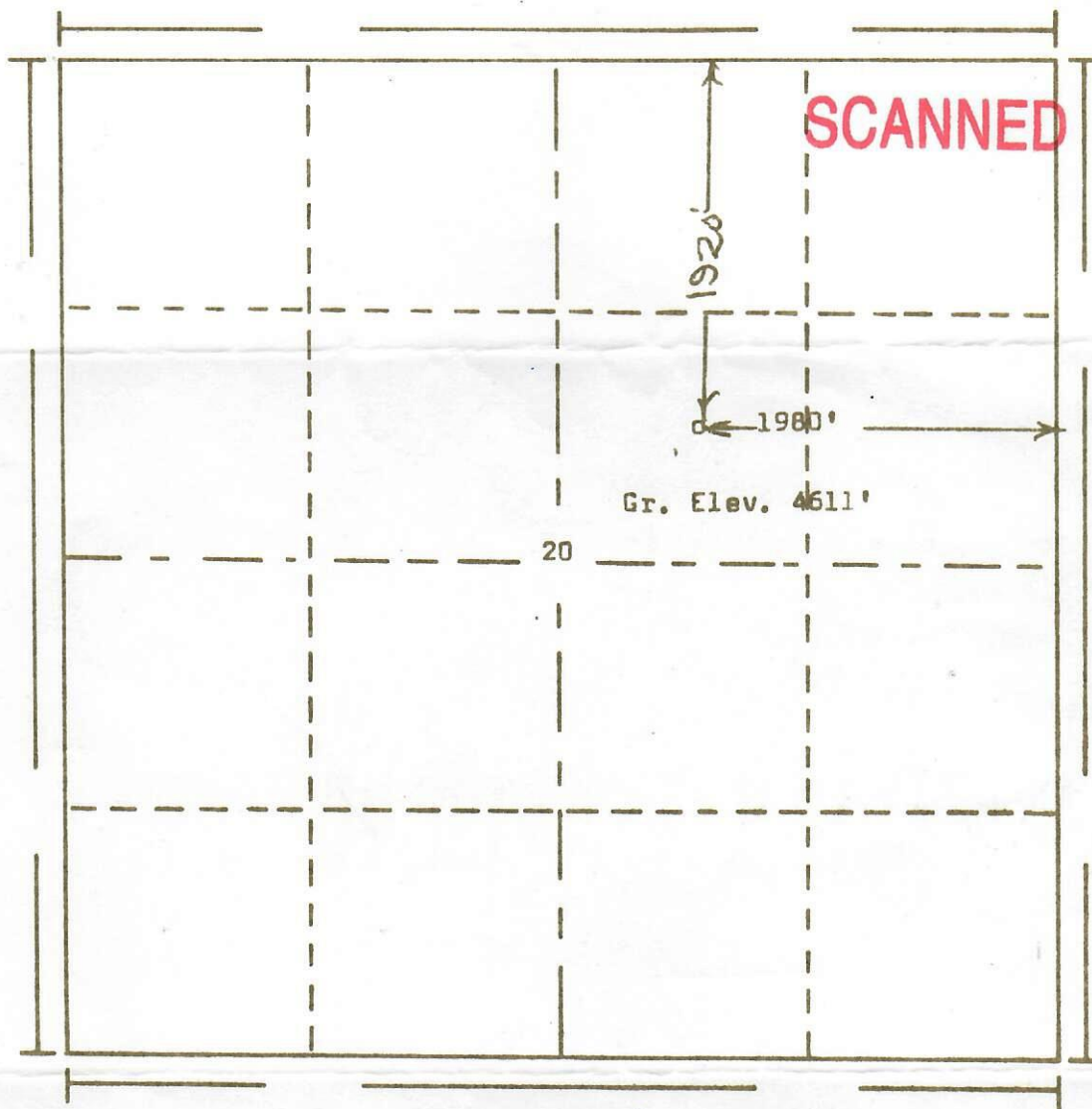
00064776

RECEIVED

MAY 22 1974

GOLD, OIL, & GAS CONS. COMM.

R. 53W



Scale... 1" = 1000'

Powers Elevation Company, Inc. of Denver, Colorado
has in accordance with a request from Mr. Rhodes
for Don Winslow

determined the location of No. 1 Mason
to be CSW NE Section 20 Township 2N
Range 53W of the 6th Principal Meridian
Washington County, Colorado

I hereby certify that this plat is an
accurate representation of a correct
survey showing the location of

Date: 5-14-74

W. D. K...
Licensed Land Surveyor No. 2853
State of Colorado