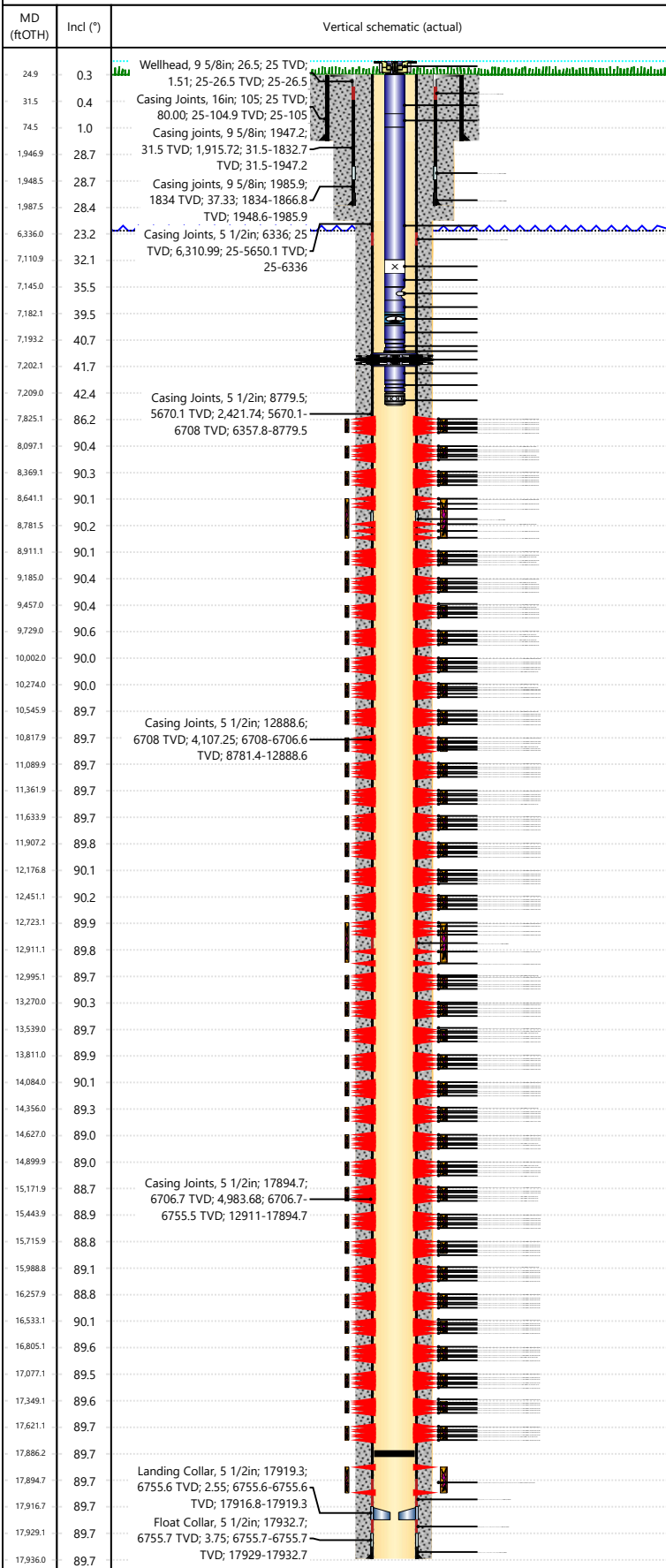




# Wellbore Schematic Input Report

Well Name: George 10N

Original Hole [Land]



Well Header			
Surface UWI 0512351767	Asset Team 10004142	Production Tree Location Land	
Original RKB Elevation (ft) 4,742.00	Original KB to Ground (ft) 25.00	Original Spud Date 4/1/2024	Abandon Date
Range 64W	Well Sub-Status PR	High Press... N	
Directions To Well WCR 42-53 East 6/10 North into. ALL traffic must arrive from and leave to the West via CR 53		Latitude (°) 40° 18' 0.112" N	Longitude (°) 104° 33' 16.499" W
Comment			

Congressional Location						
Quarter 3 SW	Quarter 4 NE	Section 21	Township 4	Twnshp N/S Dir N	Range 64	Range E/W Dir W

Rig Operator	
Rig/Unit Supervisor Shawn Johnson	

Daily Cost Summary	
Sum of Field Est (Cost)	0

Wellbore Plug Back Total Depths			
Date	PBTD (ftOTH)	Method	Com
10/29/2024		COIL TUBING	CLEANOUT DEPTH ABOVE BALL SEAT

Wellbore Sections			
Section Des	Hole Size (in)	Top Depth (ftOTH)	Btm Depth (ftOTH)
Conductor	16		
Surface	13 1/2		
Production	8 1/2		

Zone Statuses		
Zone Name	Status Date	Status
Niobrara B	11/24/2024	Open

Casing Strings						
Conductor, Actual, <DepthBtm>ftOTH						
Casing Description	Run Date	OD (in)	Wt/Len (L...)	Grade	Top Depth...	Set Depth...
Conductor	2/6/2024	16	84.00	J-55		

Surface, Actual, <DepthBtm>ftOTH						
Casing Description	Run Date	OD (in)	Wt/Len (L...)	Grade	Top Depth...	Set Depth...
Surface	2/29/2024	9 5/8	36.00	J-55		

Production, Actual, <DepthBtm>ftOTH						
Casing Description	Run Date	OD (in)	Wt/Len (L...)	Grade	Top Depth...	Set Depth...
Production	4/2/2024	5 1/2	20.00	P-110		

Cement			
Des	Start Date	Top (ftOTH)	Btm (ftOTH)
Conductor Cement	2/6/2024		
Surface	2/29/2024		
Production Casing Cement	4/3/2024		

Proposed Cement			
Des	Top (ftOTH)	Btm (ftOTH)	

Tubing Strings						
Tubing Description	Run Date	String...	ID (in)	Wt (lb/ft)	Grade	Len (ft)
Tubing	11/10/2024	4	2 3/8	1.867	L-80	7,184.90

Tubing Components							
Item Des	OD (in)	Wt (lb/ft)	Grade	Jts	Len (ft)	Btm (ftOTH)	Btm (TVD) (ftOTH)
Tubing Hanger	2 3/8			1	0.50		
SLICK JOINT	2 3/8	4.70	L-80	1	33.50		
Tubing Sub	2 3/8	4.70	L-80	2	16.00		
Tubing	2 3/8	4.70	L-80	213	7,036.28		
X-Nipple	2 3/8			1	0.93		
Tubing	2 3/8	4.70	L-80	1	33.20		
Gas Lift Mandrel	2 3/8			1	4.10		
Tubing	2 3/8	4.70	L-80	1	33.11		
Pressure / Temperature Sensor	2 3/8			1	1.24		
Tubing	2 3/8	4.70	L-80	1	9.95		





# Wellbore Schematic Input Report

Well Name: George 10N

Original Hole [Land]			Perforation Data				
MD (ftOHT)	Incl (°)	Vertical schematic (actual)	Linked Zone	Sum of Entered Shot Total	Top (ftOTH)	Btm (ftOTH)	Date
24.9	0.3	<p>Wellhead, 9 5/8in; 26.5; 25 TVD; 1.51; 25-26.5 TVD; 25-26.5</p> <p>Casing Joints, 16in; 105; 25 TVD; 80.00; 25-104.9 TVD; 25-105</p> <p>Casing joints, 9 5/8in; 1947.2; 31.5 TVD; 1,915.72; 31.5-1832.7 TVD; 31.5-1947.2</p> <p>Casing joints, 9 5/8in; 1985.9; 1834 TVD; 37.33; 1834-1866.8 TVD; 1948.6-1985.9</p> <p>Casing Joints, 5 1/2in; 6336; 25 TVD; 6,310.99; 25-5650.1 TVD; 25-6336</p> <p>Casing Joints, 5 1/2in; 8779.5; 5670.1 TVD; 2,421.74; 5670.1-6708 TVD; 6357.8-8779.5</p> <p>Casing Joints, 5 1/2in; 12888.6; 6708 TVD; 4,107.25; 6708-6706.6 TVD; 8781.4-12888.6</p> <p>Casing Joints, 5 1/2in; 17894.7; 6706.7 TVD; 4,983.68; 6706.7-6755.5 TVD; 12911-17894.7</p> <p>Landing Collar, 5 1/2in; 17919.3; 6755.6 TVD; 2.55; 6755.6-6755.6 TVD; 17916.8-17919.3</p> <p>Float Collar, 5 1/2in; 17932.7; 6755.7 TVD; 3.75; 6755.7-6755.7 TVD; 17929-17932.7</p>	Niobrara B, Original Hole	4			10/7/2024
31.5	0.4		Niobrara B, Original Hole	4			10/7/2024
74.5	1.0		Niobrara B, Original Hole	4			10/7/2024
1946.9	28.7		Niobrara B, Original Hole	4			10/6/2024
1948.5	28.7		Niobrara B, Original Hole	4			10/6/2024
1987.5	28.4		Niobrara B, Original Hole	4			10/6/2024
6336.0	23.2		Niobrara B, Original Hole	4			10/6/2024
7110.9	32.1		Niobrara B, Original Hole	4			10/6/2024
7145.0	35.5		Niobrara B, Original Hole	4			10/6/2024
7182.1	39.5		Niobrara B, Original Hole	4			10/6/2024
7193.2	40.7		Niobrara B, Original Hole	4			10/6/2024
7202.1	41.7		Niobrara B, Original Hole	4			10/6/2024
7209.0	42.4		Niobrara B, Original Hole	4			10/6/2024
7825.1	86.2		Niobrara B, Original Hole	4			10/6/2024
8097.1	90.4		Niobrara B, Original Hole	4			10/6/2024
8369.1	90.3		Niobrara B, Original Hole	4			10/6/2024
8641.1	90.1		Niobrara B, Original Hole	4			10/6/2024
8781.5	90.2		Niobrara B, Original Hole	4			10/6/2024
8911.1	90.1		Niobrara B, Original Hole	4			10/6/2024
9185.0	90.4		Niobrara B, Original Hole	4			10/6/2024
9457.0	90.4	Niobrara B, Original Hole	4			10/6/2024	
9729.0	90.6	Niobrara B, Original Hole	4			10/6/2024	
10002.0	90.0	Niobrara B, Original Hole	4			10/6/2024	
10274.0	90.0	Niobrara B, Original Hole	4			10/6/2024	
10545.9	89.7	Niobrara B, Original Hole	4			10/6/2024	
10817.9	89.7	Niobrara B, Original Hole	4			10/6/2024	
11089.9	89.7	Niobrara B, Original Hole	4			10/6/2024	
11361.9	89.7	Niobrara B, Original Hole	4			10/6/2024	
11633.9	89.7	Niobrara B, Original Hole	4			10/6/2024	
11907.2	89.8	Niobrara B, Original Hole	4			10/6/2024	
12176.8	90.1	Niobrara B, Original Hole	4			10/6/2024	
12451.1	90.2	Niobrara B, Original Hole	4			10/5/2024	
12723.1	89.9	Niobrara B, Original Hole	4			10/5/2024	
12911.1	89.8	Niobrara B, Original Hole	4			10/5/2024	
12995.1	89.7	Niobrara B, Original Hole	4			10/5/2024	
13270.0	90.3	Niobrara B, Original Hole	4			10/5/2024	
13539.0	89.7	Niobrara B, Original Hole	4			10/5/2024	
13811.0	89.9	Niobrara B, Original Hole	4			10/5/2024	
14084.0	90.1	Niobrara B, Original Hole	4			10/5/2024	
14356.0	89.3	Niobrara B, Original Hole	4			10/5/2024	
14627.0	89.0	Niobrara B, Original Hole	4			10/5/2024	
14899.9	89.0	Niobrara B, Original Hole	4			10/5/2024	
15171.9	88.7	Niobrara B, Original Hole	4			10/5/2024	
15443.9	88.9	Niobrara B, Original Hole	4			10/5/2024	
15715.9	88.8	Niobrara B, Original Hole	4			10/5/2024	
15988.8	89.1	Niobrara B, Original Hole	4			10/5/2024	
16257.9	88.8	Niobrara B, Original Hole	4			10/5/2024	
16533.1	90.1	Niobrara B, Original Hole	4			10/5/2024	
16805.1	89.6	Niobrara B, Original Hole	4			10/5/2024	
17077.1	89.5	Niobrara B, Original Hole	4			10/5/2024	
17349.1	89.6	Niobrara B, Original Hole	4			10/5/2024	
17621.1	89.7	Niobrara B, Original Hole	4			10/5/2024	
17886.2	89.7	Niobrara B, Original Hole	4			10/5/2024	
17894.7	89.7	Niobrara B, Original Hole	4			10/5/2024	
17916.7	89.7	Niobrara B, Original Hole	4			10/4/2024	
17929.1	89.7	Niobrara B, Original Hole	4			10/4/2024	
17936.0	89.7	Niobrara B, Original Hole	4			10/4/2024	



# Wellbore Schematic Input Report

Well Name: George 10N

Original Hole [Land]			Perforation Data				
MD (ftOHT)	Incl (°)	Vertical schematic (actual)	Linked Zone	Sum of Entered Shot Total	Top (ftOHT)	Btm (ftOHT)	Date
24.9	0.3	Wellhead, 9 5/8in; 26.5; 25 TVD; 1.51; 25-26.5 TVD; 25-26.5	Niobrara B, Original Hole	4			10/4/2024
31.5	0.4	Casing Joints, 16in; 105; 25 TVD; 80.00; 25-104.9 TVD; 25-105	Niobrara B, Original Hole	4			10/4/2024
74.5	1.0	Casing joints, 9 5/8in; 1947.2; 31.5 TVD; 1,915.72; 31.5-1832.7 TVD; 31.5-1947.2	Niobrara B, Original Hole	4			10/4/2024
1946.9	28.7	Casing joints, 9 5/8in; 1985.9; 1834 TVD; 37.33; 1834-1866.8 TVD; 1948.6-1985.9	Niobrara B, Original Hole	4			10/4/2024
1948.5	28.7		Niobrara B, Original Hole	4			10/4/2024
1987.5	28.4		Niobrara B, Original Hole	4			10/4/2024
6336.0	23.2	Casing Joints, 5 1/2in; 6336; 25 TVD; 6,310.99; 25-5650.1 TVD; 25-6336	Niobrara B, Original Hole	4			10/4/2024
7110.9	32.1		Niobrara B, Original Hole	4			10/4/2024
7145.0	35.5		Niobrara B, Original Hole	4			10/4/2024
7182.1	39.5		Niobrara B, Original Hole	4			10/4/2024
7193.2	40.7		Niobrara B, Original Hole	4			10/4/2024
7202.1	41.7		Niobrara B, Original Hole	4			10/4/2024
7209.0	42.4	Casing Joints, 5 1/2in; 8779.5; 5670.1 TVD; 2,421.74; 5670.1-6708 TVD; 6357.8-8779.5	Niobrara B, Original Hole	4			10/4/2024
7825.1	86.2		Niobrara B, Original Hole	4			10/4/2024
8097.1	90.4		Niobrara B, Original Hole	4			10/4/2024
8369.1	90.3		Niobrara B, Original Hole	4			10/4/2024
8641.1	90.1		Niobrara B, Original Hole	4			10/4/2024
8781.5	90.2		Niobrara B, Original Hole	4			10/4/2024
8911.1	90.1		Niobrara B, Original Hole	4			10/4/2024
9185.0	90.4		Niobrara B, Original Hole	4			10/4/2024
9457.0	90.4		Niobrara B, Original Hole	4			10/3/2024
9729.0	90.6		Niobrara B, Original Hole	4			10/3/2024
10002.0	90.0		Niobrara B, Original Hole	4			10/3/2024
10274.0	90.0		Niobrara B, Original Hole	4			10/3/2024
10545.9	89.7	Casing Joints, 5 1/2in; 12888.6; 6708 TVD; 4,107.25; 6708-6706.6 TVD; 8781.4-12888.6	Niobrara B, Original Hole	4			10/3/2024
10817.9	89.7		Niobrara B, Original Hole	4			10/3/2024
11089.9	89.7		Niobrara B, Original Hole	4			10/3/2024
11361.9	89.7		Niobrara B, Original Hole	4			10/3/2024
11633.9	89.7		Niobrara B, Original Hole	4			10/3/2024
11907.2	89.8		Niobrara B, Original Hole	4			10/3/2024
12176.8	90.1		Niobrara B, Original Hole	4			10/3/2024
12451.1	90.2		Niobrara B, Original Hole	4			10/3/2024
12723.1	89.9		Niobrara B, Original Hole	4			10/3/2024
12911.1	89.8		Niobrara B, Original Hole	4			10/3/2024
12995.1	89.7		Niobrara B, Original Hole	4			10/3/2024
13270.0	90.3		Niobrara B, Original Hole	4			10/3/2024
13539.0	89.7		Niobrara B, Original Hole	4			10/3/2024
13811.0	89.9		Niobrara B, Original Hole	4			10/3/2024
14084.0	90.1		Niobrara B, Original Hole	4			10/3/2024
14356.0	89.3		Niobrara B, Original Hole	4			10/3/2024
14627.0	89.0		Niobrara B, Original Hole	4			10/3/2024
14899.9	89.0		Niobrara B, Original Hole	4			10/3/2024
15171.9	88.7	Casing Joints, 5 1/2in; 17894.7; 6706.7 TVD; 4,983.68; 6706.7-6755.5 TVD; 12911-17894.7	Niobrara B, Original Hole	4			10/3/2024
15443.9	88.9		Niobrara B, Original Hole	4			10/3/2024
15715.9	88.8		Niobrara B, Original Hole	4			10/3/2024
15988.8	89.1		Niobrara B, Original Hole	4			10/3/2024
16257.9	88.8		Niobrara B, Original Hole	4			10/3/2024
16533.1	90.1		Niobrara B, Original Hole	4			10/3/2024
16805.1	89.6		Niobrara B, Original Hole	4			10/2/2024
17077.1	89.5		Niobrara B, Original Hole	4			10/2/2024
17349.1	89.6		Niobrara B, Original Hole	4			10/2/2024
17621.1	89.7		Niobrara B, Original Hole	4			10/2/2024
17886.2	89.7		Niobrara B, Original Hole	4			10/2/2024
17894.7	89.7	Landing Collar, 5 1/2in; 17919.3; 6755.6 TVD; 2.55; 6755.6-6755.6 TVD; 17916.8-17919.3	Niobrara B, Original Hole	4			10/2/2024
17916.7	89.7		Niobrara B, Original Hole	4			10/2/2024
17929.1	89.7	Float Collar, 5 1/2in; 17932.7; 6755.7 TVD; 3.75; 6755.7-6755.7 TVD; 17929-17932.7	Niobrara B, Original Hole	4			10/2/2024
17936.0	89.7		Niobrara B, Original Hole	4			10/2/2024



# Wellbore Schematic Input Report

Well Name: George 10N

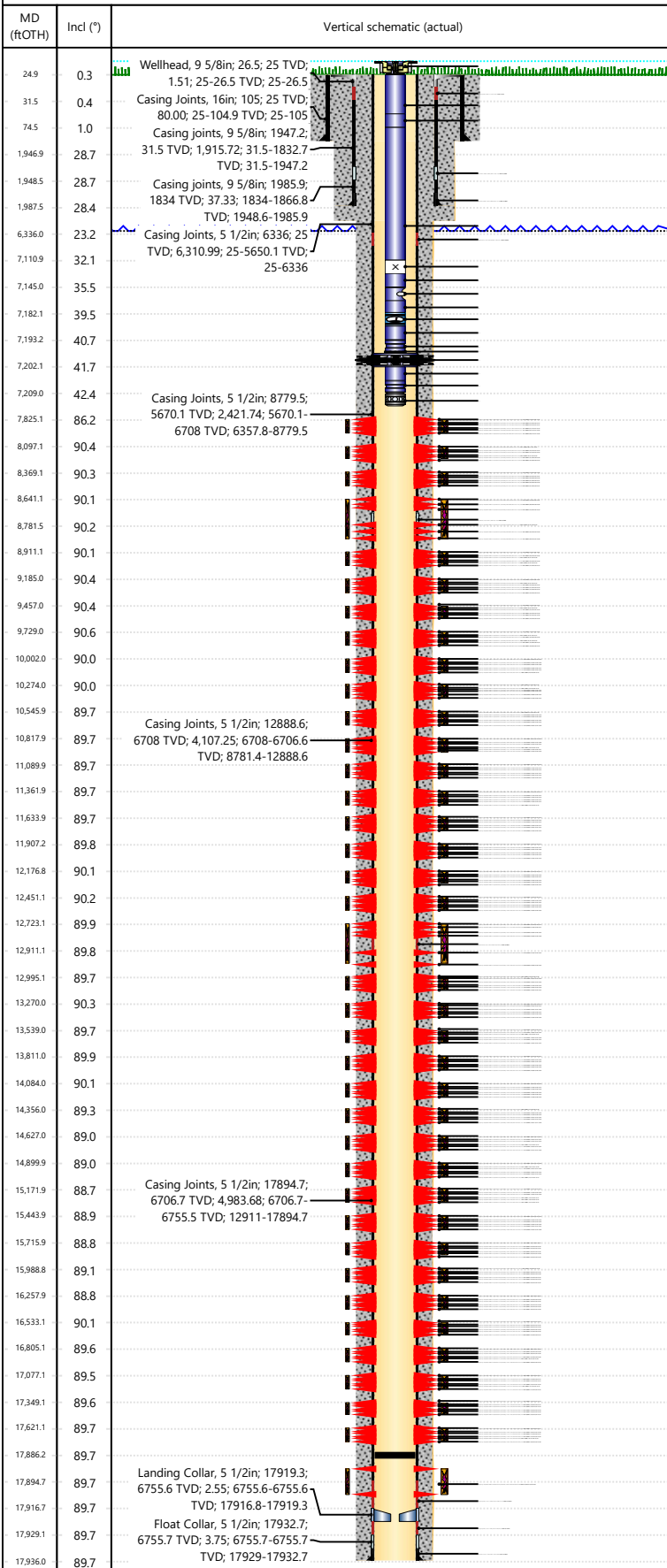
Original Hole [Land]			Perforation Data				
MD (ftOHT)	Incl (°)	Vertical schematic (actual)	Linked Zone	Sum of Entered Shot Total	Top (ftOHT)	Btm (ftOHT)	Date
24.9	0.3	<p>Wellhead, 9 5/8in; 26.5; 25 TVD; 1.51; 25-26.5 TVD; 25-26.5</p> <p>Casing Joints, 16in; 105; 25 TVD; 80.00; 25-104.9 TVD; 25-105</p> <p>Casing joints, 9 5/8in; 1947.2; 31.5 TVD; 1,915.72; 31.5-1832.7 TVD; 31.5-1947.2</p> <p>Casing joints, 9 5/8in; 1985.9; 1834 TVD; 37.33; 1834-1866.8 TVD; 1948.6-1985.9</p> <p>Casing Joints, 5 1/2in; 6336; 25 TVD; 6,310.99; 25-5650.1 TVD; 25-6336</p> <p>Casing Joints, 5 1/2in; 8779.5; 5670.1 TVD; 2,421.74; 5670.1-6708 TVD; 6357.8-8779.5</p> <p>Casing Joints, 5 1/2in; 12888.6; 6708 TVD; 4,107.25; 6708-6706.6 TVD; 8781.4-12888.6</p> <p>Casing Joints, 5 1/2in; 17894.7; 6706.7 TVD; 4,983.68; 6706.7-6755.5 TVD; 12911-17894.7</p> <p>Landing Collar, 5 1/2in; 17919.3; 6755.6 TVD; 2.55; 6755.6-6755.6 TVD; 17916.8-17919.3</p> <p>Float Collar, 5 1/2in; 17932.7; 6755.7 TVD; 3.75; 6755.7-6755.7 TVD; 17929-17932.7</p>	Niobrara B, Original Hole	4			10/2/2024
31.5	0.4		Niobrara B, Original Hole	4			10/2/2024
74.5	1.0		Niobrara B, Original Hole	4			10/2/2024
1946.9	28.7		Niobrara B, Original Hole	4			10/2/2024
1948.5	28.7		Niobrara B, Original Hole	4			10/2/2024
1987.5	28.4		Niobrara B, Original Hole	4			10/2/2024
6336.0	23.2		Niobrara B, Original Hole	4			10/2/2024
7110.9	32.1		Niobrara B, Original Hole	4			10/2/2024
7145.0	35.5		Niobrara B, Original Hole	4			10/2/2024
7182.1	39.5		Niobrara B, Original Hole	4			10/2/2024
7193.2	40.7		Niobrara B, Original Hole	4			10/2/2024
7202.1	41.7		Niobrara B, Original Hole	4			10/2/2024
7209.0	42.4		Niobrara B, Original Hole	4			10/2/2024
7825.1	86.2		Niobrara B, Original Hole	4			10/2/2024
8097.1	90.4		Niobrara B, Original Hole	4			10/1/2024
8369.1	90.3		Niobrara B, Original Hole	4			10/1/2024
8641.1	90.1		Niobrara B, Original Hole	4			10/1/2024
8781.5	90.2		Niobrara B, Original Hole	4			10/1/2024
8911.1	90.1		Niobrara B, Original Hole	4			10/1/2024
9185.0	90.4		Niobrara B, Original Hole	4			10/1/2024
9457.0	90.4	Niobrara B, Original Hole	4			10/1/2024	
9729.0	90.6	Niobrara B, Original Hole	4			10/1/2024	
10002.0	90.0	Niobrara B, Original Hole	4			10/1/2024	
10274.0	90.0	Niobrara B, Original Hole	4			10/1/2024	
10545.9	89.7	Niobrara B, Original Hole	4			10/1/2024	
10817.9	89.7	Niobrara B, Original Hole	4			10/1/2024	
11089.9	89.7	Niobrara B, Original Hole	4			10/1/2024	
11361.9	89.7	Niobrara B, Original Hole	4			10/1/2024	
11633.9	89.7	Niobrara B, Original Hole	4			10/1/2024	
11907.2	89.8	Niobrara B, Original Hole	4			10/1/2024	
12176.8	90.1	Niobrara B, Original Hole	4			10/1/2024	
12451.1	90.2	Niobrara B, Original Hole	4			10/1/2024	
12723.1	89.9	Niobrara B, Original Hole	4			10/1/2024	
12911.1	89.8	Niobrara B, Original Hole	4			10/1/2024	
12995.1	89.7	Niobrara B, Original Hole	4			10/1/2024	
13270.0	90.3	Niobrara B, Original Hole	4			10/1/2024	
13539.0	89.7	Niobrara B, Original Hole	4			10/1/2024	
13811.0	89.9	Niobrara B, Original Hole	4			9/30/2024	
14084.0	90.1	Niobrara B, Original Hole	4			9/30/2024	
14356.0	89.3	Niobrara B, Original Hole	4			9/30/2024	
14627.0	89.0	Niobrara B, Original Hole	4			9/30/2024	
14899.9	89.0	Niobrara B, Original Hole	4			9/30/2024	
15171.9	88.7	Niobrara B, Original Hole	4			9/30/2024	
15443.9	88.9	Niobrara B, Original Hole	4			9/30/2024	
15715.9	88.8	Niobrara B, Original Hole	4			9/30/2024	
15988.8	89.1	Niobrara B, Original Hole	4			9/30/2024	
16257.9	88.8	Niobrara B, Original Hole	4			9/30/2024	
16533.1	90.1	Niobrara B, Original Hole	4			9/30/2024	
16805.1	89.6	Niobrara B, Original Hole	4			9/30/2024	
17077.1	89.5	Niobrara B, Original Hole	4			9/30/2024	
17349.1	89.6	Niobrara B, Original Hole	4			9/30/2024	
17621.1	89.7	Niobrara B, Original Hole	4			9/30/2024	
17886.2	89.7	Niobrara B, Original Hole	4			9/30/2024	
17894.7	89.7	Niobrara B, Original Hole	4			9/30/2024	
17916.7	89.7	Niobrara B, Original Hole	4			9/29/2024	
17929.1	89.7	Niobrara B, Original Hole	4			9/29/2024	
17936.0	89.7	Niobrara B, Original Hole	4			9/29/2024	



# Wellbore Schematic Input Report

Well Name: George 10N

## Original Hole [Land]



Linked Zone	Sum of Entered Shot Total	Top (ftOTH)	Btm (ftOTH)	Date
Niobrara B, Original Hole	4			9/29/2024
Niobrara B, Original Hole	4			9/29/2024
Niobrara B, Original Hole	4			9/29/2024
Niobrara B, Original Hole	12			8/6/2024
<b>Total</b>	<b>900</b>			

Job Supply Amounts						
Supply Item Des	Job Supply Type	Uni...	Job Category	Total...	Total...	Total...

Daily Cost Breakdown by Category		
Field Est (Cost)	Description	Note