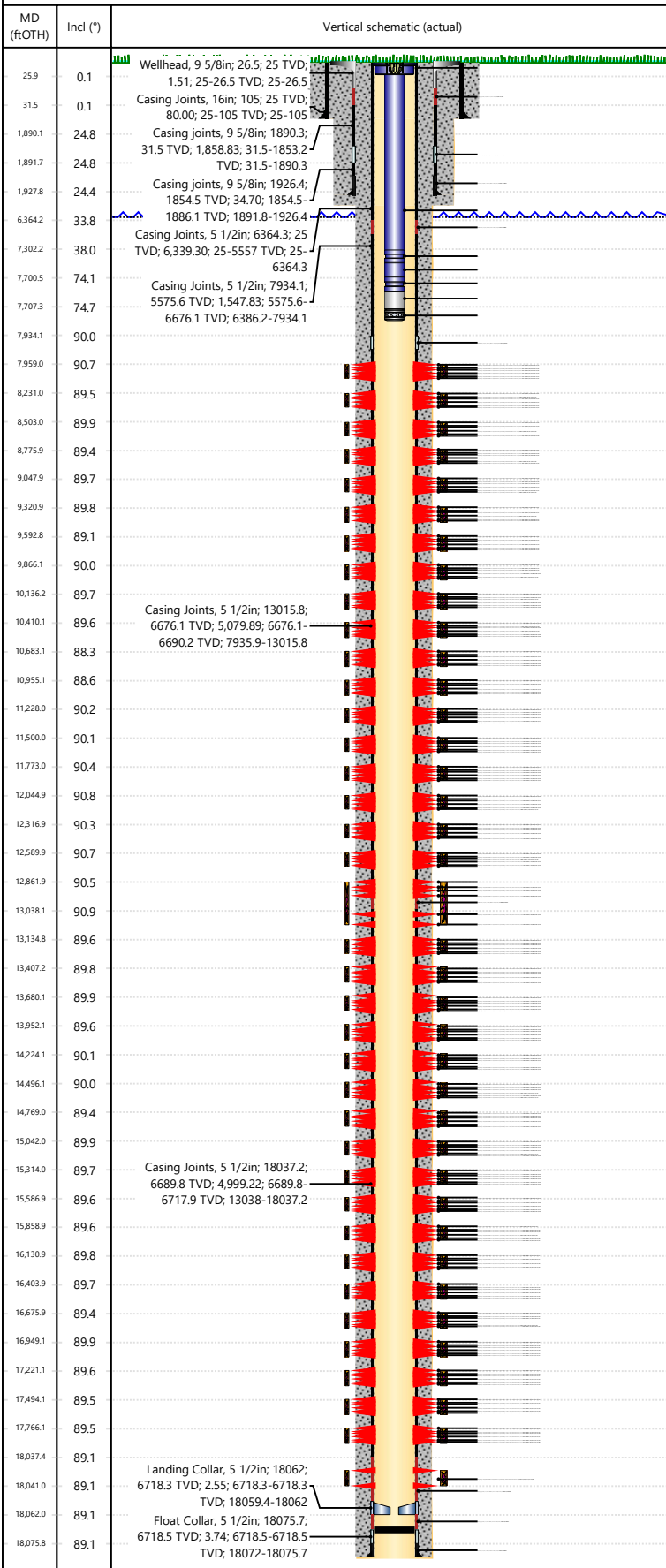




Wellbore Schematic Input Report

Well Name: George 07NA

Original Hole [Land]



Well Header						
Surface UWI 0512351774		Asset Team 10004139		Production Tree Location Land		
Original RKB Elevation (ft) 4,742.00		Original KB to Ground (ft) 25.00		Original Spud Date 3/23/2024		Abandon Date
Range 64W			Well Sub-Status PR		High Press... N	
Directions To Well				Latitude (°) 40° 18' 0.454" N		Longitude (°) 104° 33' 16.877" W
Comment						
Congressional Location						
Quarter 3 SW	Quarter 4 NE	Section 21	Township 4	Twntshp N/S Dir N	Range 64	Range E/W Dir W
Rig Operator						
Rig/Unit Supervisor Shawn Johnson						
Daily Cost Summary						
Sum of Field Est (Cost) 0						
Wellbore Plug Back Total Depths						
Date	PBTD (ftOTH)	Method		Com		
11/25/2024						
Wellbore Sections						
Section Des		Hole Size (in)	Top Depth (ftOTH)		Btm Depth (ftOTH)	
Conductor		16				
Surface		13 1/2				
Production		8 1/2				
Zone Statuses						
Zone Name		Status Date		Status		
Casing Strings						
Conductor, Actual, <DepthBtm>ftOTH						
Casing Description	Run Date	OD (in)	Wt/Len (l...)	Grade	Top Depth...	Set Depth...
Conductor	2/6/2024	16	84.00	J-55		
Surface, Actual, <DepthBtm>ftOTH						
Casing Description	Run Date	OD (in)	Wt/Len (l...)	Grade	Top Depth...	Set Depth...
Surface	3/1/2024	9 5/8	36.00	J-55		
Production, Actual, <DepthBtm>ftOTH						
Casing Description	Run Date	OD (in)	Wt/Len (l...)	Grade	Top Depth...	Set Depth...
Production	3/25/2024	5 1/2	20.00	P-110		
Cement						
Des		Start Date		Top (ftOTH)		Btm (ftOTH)
Conductor Cement		2/6/2024				
Surface		3/1/2024				
Production Casing Cement		3/26/2024				
Proposed Cement						
Des		Top (ftOTH)		Btm (ftOTH)		
Tubing Strings						
Tubing Description	Run Date	String...	ID (in)	Wt (lb/ft)	Grade	Len (ft) Set De...
Tubing - Production	11/7/2024	2 3/8	1.995	4.70	L-80	7,683.08
Tubing Components						
Item Des	OD (in)	Wt (lb/ft)	Grade	Jts	Len (ft)	Btm (ftOTH) Btm (TVD) (ftOTH)
Tubing Hanger	5	4.70		1	0.85	
Tubing	2 3/8	4.70	L-80	220	7,276.30	
X-Nipple	2 3/8	4.70	L-80	1	0.95	
Tubing	2 3/8	4.70	L-80	12	397.20	
XN - Nipple	2 3/8	4.70	L-80	1	1.03	
Tubing Pup Joint	2 3/8	4.70	L-80	1	6.05	
Ceramic disc sub	2 3/8	4.70	L-80	1	0.70	
Other In Hole						
Run Date	Des		Make	OD (in)	Top (ftOTH)	Btm (ftOTH)



Wellbore Schematic Input Report

Well Name: George 07NA

Original Hole [Land]			Perforation Data				
MD (fROTH)	Incl (°)	Vertical schematic (actual)	Linked Zone	Sum of Entered Shot Total	Top (fROTH)	Btm (fROTH)	Date
25.9	0.1	Wellhead, 9 5/8in; 26.5; 25 TVD; 1.51; 25-26.5 TVD; 25-26.5	Niobrara, Original Hole	4			10/6/2024
31.5	0.1	Casing Joints, 16in; 105; 25 TVD; 80.00; 25-105 TVD; 25-105	Niobrara, Original Hole	4			10/6/2024
1890.1	24.8	Casing joints, 9 5/8in; 1890.3; 31.5 TVD; 1,858.83; 31.5-1853.2	Niobrara, Original Hole	4			10/6/2024
1891.7	24.8	TVD; 31.5-1890.3	Niobrara, Original Hole	4			10/6/2024
1927.8	24.4	Casing joints, 9 5/8in; 1926.4; 1854.5 TVD; 34.70; 1854.5-	Niobrara, Original Hole	4			10/6/2024
6364.2	33.8	1886.1 TVD; 1891.8-1926.4	Niobrara, Original Hole	4			10/6/2024
7302.2	38.0	Casing Joints, 5 1/2in; 6364.3; 25 TVD; 6,339.30; 25-5557 TVD; 25-6364.3	Niobrara, Original Hole	4			10/6/2024
7700.5	74.1	Casing Joints, 5 1/2in; 7934.1; 5575.6 TVD; 1,547.83; 5575.6-	Niobrara, Original Hole	4			10/6/2024
7707.3	74.7	6676.1 TVD; 6386.2-7934.1	Niobrara, Original Hole	4			10/6/2024
7934.1	90.0		Niobrara, Original Hole	4			10/6/2024
7959.0	90.7		Niobrara, Original Hole	4			10/6/2024
8231.0	89.5		Niobrara, Original Hole	4			10/6/2024
8503.0	89.9		Niobrara, Original Hole	4			10/6/2024
8775.9	89.4		Niobrara, Original Hole	4			10/6/2024
9047.9	89.7		Niobrara, Original Hole	4			10/6/2024
9320.9	89.8		Niobrara, Original Hole	4			10/6/2024
9592.8	89.1		Niobrara, Original Hole	4			10/5/2024
9866.1	90.0		Niobrara, Original Hole	4			10/5/2024
10136.2	89.7		Niobrara, Original Hole	4			10/5/2024
10410.1	89.6	Casing Joints, 5 1/2in; 13015.8; 6676.1 TVD; 5,079.89; 6676.1-	Niobrara, Original Hole	4			10/5/2024
10683.1	88.3	6690.2 TVD; 7935.9-13015.8	Niobrara, Original Hole	4			10/5/2024
10955.1	88.6		Niobrara, Original Hole	4			10/5/2024
11228.0	90.2		Niobrara, Original Hole	4			10/5/2024
11500.0	90.1		Niobrara, Original Hole	4			10/5/2024
11773.0	90.4		Niobrara, Original Hole	4			10/5/2024
12044.9	90.8		Niobrara, Original Hole	4			10/5/2024
12316.9	90.3		Niobrara, Original Hole	4			10/5/2024
12589.9	90.7		Niobrara, Original Hole	4			10/5/2024
12861.9	90.5		Niobrara, Original Hole	4			10/5/2024
13038.1	90.9		Niobrara, Original Hole	4			10/5/2024
13134.8	89.6		Niobrara, Original Hole	4			10/5/2024
13407.2	89.8		Niobrara, Original Hole	4			10/5/2024
13680.1	89.9		Niobrara, Original Hole	4			10/5/2024
13952.1	89.6		Niobrara, Original Hole	4			10/5/2024
14224.1	90.1		Niobrara, Original Hole	4			10/5/2024
14496.1	90.0		Niobrara, Original Hole	4			10/5/2024
14769.0	89.4		Niobrara, Original Hole	4			10/5/2024
15042.0	89.9		Niobrara, Original Hole	4			10/5/2024
15314.0	89.7	Casing Joints, 5 1/2in; 18037.2; 6689.8 TVD; 4,999.22; 6689.8-	Niobrara, Original Hole	4			10/4/2024
15586.9	89.6	6717.9 TVD; 13038-18037.2	Niobrara, Original Hole	4			10/4/2024
15858.9	89.6		Niobrara, Original Hole	4			10/4/2024
16130.9	89.8		Niobrara, Original Hole	4			10/4/2024
16403.9	89.7		Niobrara, Original Hole	4			10/4/2024
16675.9	89.4		Niobrara, Original Hole	4			10/4/2024
16948.1	89.9		Niobrara, Original Hole	4			10/4/2024
17221.1	89.6		Niobrara, Original Hole	4			10/4/2024
17494.1	89.5		Niobrara, Original Hole	4			10/4/2024
17766.1	89.5		Niobrara, Original Hole	4			10/4/2024
18037.4	89.1		Niobrara, Original Hole	4			10/4/2024
18041.0	89.1	Landing Collar, 5 1/2in; 18062; 6718.3 TVD; 2.55; 6718.3-6718.3	Niobrara, Original Hole	4			10/4/2024
18062.0	89.1	TVD; 18059.4-18062	Niobrara, Original Hole	4			10/4/2024
18075.8	89.1	Float Collar, 5 1/2in; 18075.7; 6718.5 TVD; 3.74; 6718.5-6718.5	Niobrara, Original Hole	4			10/4/2024
		TVD; 18072-18075.7	Niobrara, Original Hole	4			10/4/2024



Wellbore Schematic Input Report

Well Name: George 07NA

Original Hole [Land]			Perforation Data				
MD (fROTH)	Incl (°)	Vertical schematic (actual)	Linked Zone	Sum of Entered Shot Total	Top (fROTH)	Btm (fROTH)	Date
25.9	0.1	Wellhead, 9 5/8in; 26.5; 25 TVD; 1.51; 25-26.5 TVD; 25-26.5	Niobrara, Original Hole	4			10/4/2024
31.5	0.1	Casing Joints, 16in; 105; 25 TVD; 80.00; 25-105 TVD; 25-105	Niobrara, Original Hole	4			10/4/2024
1890.1	24.8	Casing joints, 9 5/8in; 1890.3; 31.5 TVD; 1,858.83; 31.5-1853.2	Niobrara, Original Hole	4			10/4/2024
1891.7	24.8	TVD; 31.5-1890.3	Niobrara, Original Hole	4			10/4/2024
1927.8	24.4	Casing joints, 9 5/8in; 1926.4; 1854.5 TVD; 34.70; 1854.5-	Niobrara, Original Hole	4			10/4/2024
6364.2	33.8	1886.1 TVD; 1891.8-1926.4	Niobrara, Original Hole	4			10/4/2024
7302.2	38.0	Casing Joints, 5 1/2in; 6364.3; 25 TVD; 6,339.30; 25-5557 TVD; 25-6364.3	Niobrara, Original Hole	4			10/3/2024
7700.5	74.1	Casing Joints, 5 1/2in; 7934.1; 5575.6 TVD; 1,547.83; 5575.6-	Niobrara, Original Hole	4			10/3/2024
7707.3	74.7	6676.1 TVD; 6386.2-7934.1	Niobrara, Original Hole	4			10/3/2024
7934.1	90.0		Niobrara, Original Hole	4			10/3/2024
7959.0	90.7		Niobrara, Original Hole	4			10/3/2024
8231.0	89.5		Niobrara, Original Hole	4			10/3/2024
8503.0	89.9		Niobrara, Original Hole	4			10/3/2024
8775.9	89.4		Niobrara, Original Hole	4			10/3/2024
9047.9	89.7		Niobrara, Original Hole	4			10/3/2024
9320.9	89.8		Niobrara, Original Hole	4			10/3/2024
9592.8	89.1		Niobrara, Original Hole	4			10/3/2024
9866.1	90.0		Niobrara, Original Hole	4			10/3/2024
10136.2	89.7		Niobrara, Original Hole	4			10/3/2024
10410.1	89.6	Casing Joints, 5 1/2in; 13015.8; 6676.1 TVD; 5,079.89; 6676.1-	Niobrara, Original Hole	4			10/3/2024
10683.1	88.3	6690.2 TVD; 7935.9-13015.8	Niobrara, Original Hole	4			10/3/2024
10955.1	88.6		Niobrara, Original Hole	4			10/3/2024
11228.0	90.2		Niobrara, Original Hole	4			10/3/2024
11500.0	90.1		Niobrara, Original Hole	4			10/3/2024
11773.0	90.4		Niobrara, Original Hole	4			10/3/2024
12044.9	90.8		Niobrara, Original Hole	4			10/3/2024
12316.9	90.3		Niobrara, Original Hole	4			10/3/2024
12589.9	90.7		Niobrara, Original Hole	4			10/3/2024
12861.9	90.5		Niobrara, Original Hole	4			10/3/2024
13038.1	90.9		Niobrara, Original Hole	4			10/3/2024
13134.8	89.6		Niobrara, Original Hole	4			10/3/2024
13407.2	89.8		Niobrara, Original Hole	4			10/3/2024
13680.1	89.9		Niobrara, Original Hole	4			10/2/2024
13952.1	89.6		Niobrara, Original Hole	4			10/2/2024
14224.1	90.1		Niobrara, Original Hole	4			10/2/2024
14496.1	90.0		Niobrara, Original Hole	4			10/2/2024
14769.0	89.4		Niobrara, Original Hole	4			10/2/2024
15042.0	89.9		Niobrara, Original Hole	4			10/2/2024
15314.0	89.7	Casing Joints, 5 1/2in; 18037.2; 6689.8 TVD; 4,999.22; 6689.8-	Niobrara, Original Hole	4			10/2/2024
15586.9	89.6	6717.9 TVD; 13038-18037.2	Niobrara, Original Hole	4			10/2/2024
15858.9	89.6		Niobrara, Original Hole	4			10/2/2024
16130.9	89.8		Niobrara, Original Hole	4			10/2/2024
16403.9	89.7		Niobrara, Original Hole	4			10/2/2024
16675.9	89.4		Niobrara, Original Hole	4			10/2/2024
16948.1	89.9		Niobrara, Original Hole	4			10/2/2024
17221.1	89.6		Niobrara, Original Hole	4			10/2/2024
17494.1	89.5		Niobrara, Original Hole	4			10/2/2024
17766.1	89.5		Niobrara, Original Hole	4			10/2/2024
18037.4	89.1		Niobrara, Original Hole	4			10/2/2024
18041.0	89.1	Landing Collar, 5 1/2in; 18062; 6718.3 TVD; 2.55; 6718.3-6718.3	Niobrara, Original Hole	4			10/2/2024
18062.0	89.1	TVD; 18059.4-18062	Niobrara, Original Hole	4			10/2/2024
18075.8	89.1	Float Collar, 5 1/2in; 18075.7; 6718.5 TVD; 3.74; 6718.5-6718.5	Niobrara, Original Hole	4			10/2/2024
		TVD; 18072-18075.7	Niobrara, Original Hole	4			10/2/2024



Wellbore Schematic Input Report

Well Name: George 07NA

Original Hole [Land]			Perforation Data				
MD (ftOHT)	Incl (°)	Vertical schematic (actual)	Linked Zone	Sum of Entered Shot Total	Top (ftOTH)	Btm (ftOTH)	Date
25.9	0.1	Wellhead, 9 5/8in; 26.5; 25 TVD; 1.51; 25-26.5 TVD; 25-26.5	Niobrara, Original Hole	4			10/2/2024
31.5	0.1	Casing Joints, 16in; 105; 25 TVD; 80.00; 25-105 TVD; 25-105	Niobrara, Original Hole	4			10/1/2024
1890.1	24.8	Casing joints, 9 5/8in; 1890.3; 31.5 TVD; 1,858.83; 31.5-1853.2	Niobrara, Original Hole	4			10/1/2024
1891.7	24.8	TVD; 31.5-1890.3	Niobrara, Original Hole	4			10/1/2024
1927.8	24.4	Casing joints, 9 5/8in; 1926.4; 1854.5 TVD; 34.70; 1854.5-	Niobrara, Original Hole	4			10/1/2024
6364.2	33.8	1886.1 TVD; 1891.8-1926.4	Niobrara, Original Hole	4			10/1/2024
7302.2	38.0	Casing Joints, 5 1/2in; 6364.3; 25 TVD; 6,339.30; 25-5557 TVD; 25-6364.3	Niobrara, Original Hole	4			10/1/2024
7700.5	74.1	Casing Joints, 5 1/2in; 7934.1; 5575.6 TVD; 1,547.83; 5575.6-	Niobrara, Original Hole	4			10/1/2024
7707.3	74.7	6676.1 TVD; 6386.2-7934.1	Niobrara, Original Hole	4			10/1/2024
7934.1	90.0		Niobrara, Original Hole	4			10/1/2024
7959.0	90.7		Niobrara, Original Hole	4			10/1/2024
8231.0	89.5		Niobrara, Original Hole	4			10/1/2024
8503.0	89.9		Niobrara, Original Hole	4			10/1/2024
8775.9	89.4		Niobrara, Original Hole	4			10/1/2024
9047.9	89.7		Niobrara, Original Hole	4			10/1/2024
9320.9	89.8		Niobrara, Original Hole	4			10/1/2024
9592.8	89.1		Niobrara, Original Hole	4			10/1/2024
9866.1	90.0		Niobrara, Original Hole	4			10/1/2024
10136.2	89.7		Niobrara, Original Hole	4			10/1/2024
10410.1	89.6	Casing Joints, 5 1/2in; 13015.8; 6676.1 TVD; 5,079.89; 6676.1-	Niobrara, Original Hole	4			10/1/2024
10683.1	88.3	6690.2 TVD; 7935.9-13015.8	Niobrara, Original Hole	4			10/1/2024
10955.1	88.6		Niobrara, Original Hole	4			10/1/2024
11228.0	90.2		Niobrara, Original Hole	4			9/30/2024
11500.0	90.1		Niobrara, Original Hole	4			9/30/2024
11773.0	90.4		Niobrara, Original Hole	4			9/30/2024
12044.9	90.8		Niobrara, Original Hole	4			9/30/2024
12316.9	90.3		Niobrara, Original Hole	4			9/30/2024
12589.9	90.7		Niobrara, Original Hole	4			9/30/2024
12861.9	90.5		Niobrara, Original Hole	4			9/30/2024
13038.1	90.9		Niobrara, Original Hole	4			9/30/2024
13134.8	89.6		Niobrara, Original Hole	4			9/30/2024
13407.2	89.8		Niobrara, Original Hole	4			9/30/2024
13680.1	89.9		Niobrara, Original Hole	4			9/30/2024
13952.1	89.6		Niobrara, Original Hole	4			9/30/2024
14224.1	90.1		Niobrara, Original Hole	4			9/30/2024
14496.1	90.0		Niobrara, Original Hole	4			9/30/2024
14769.0	89.4		Niobrara, Original Hole	4			9/30/2024
15042.0	89.9		Niobrara, Original Hole	4			9/30/2024
15314.0	89.7	Casing Joints, 5 1/2in; 18037.2; 6689.8 TVD; 4,999.22; 6689.8-	Niobrara, Original Hole	4			9/30/2024
15586.9	89.6	6717.9 TVD; 13038-18037.2	Niobrara, Original Hole	4			9/30/2024
15858.9	89.6		Niobrara, Original Hole	4			9/30/2024
16130.9	89.8		Niobrara, Original Hole	4			9/30/2024
16403.9	89.7		Niobrara, Original Hole	4			9/30/2024
16675.9	89.4		Niobrara, Original Hole	4			9/30/2024
16949.1	89.9		Niobrara, Original Hole	4			9/30/2024
17221.1	89.6		Niobrara, Original Hole	4			9/30/2024
17494.1	89.5		Niobrara, Original Hole	4			9/30/2024
17766.1	89.5		Niobrara, Original Hole	4			9/30/2024
18037.4	89.1		Niobrara, Original Hole	4			9/30/2024
18041.0	89.1	Landing Collar, 5 1/2in; 18062; 6718.3 TVD; 2.55; 6718.3-6718.3	Niobrara, Original Hole	4			9/30/2024
18062.0	89.1	TVD; 18059.4-18062	Niobrara, Original Hole	4			9/30/2024
18075.8	89.1	Float Collar, 5 1/2in; 18075.7; 6718.5 TVD; 3.74; 6718.5-6718.5	Niobrara, Original Hole	4			9/30/2024
		TVD; 18072-18075.7	Niobrara, Original Hole	4			9/30/2024
Total				900			8/5/2024
Job Supply Amounts							
Supply Item Des		Job Supply Type		Uni...	Job Category	Total...	Total...
Daily Cost Breakdown by Category							
Field Est (Cost)		Description			Note		