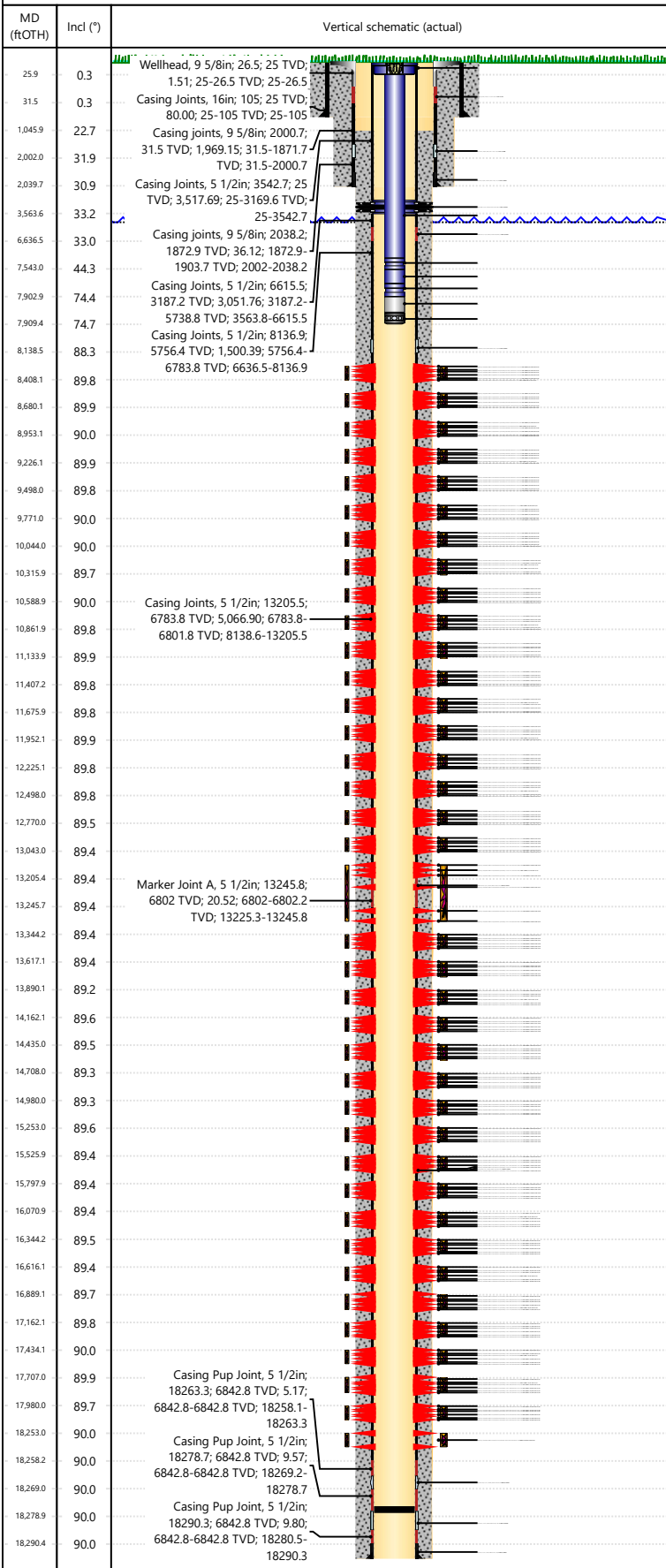




Wellbore Schematic Input Report

Well Name: George 01N

Original Hole [Land]



Well Header						
Surface UWI 0512351766		Asset Team 10004140		Production Tree Location Land		
Original RKB Elevation (ft) 4,742.00		Original KB to Ground (ft) 25.00		Original Spud Date 3/5/2024		Abandon Date
Range 64W			Well Sub-Status PR		High Press... N	
Directions To Well WCR 42-53 East 6/10 North into. ALL traffic must arrive from and leave to the West via CR 53				Latitude (°) 40° 18' 1.134" N		Longitude (°) 104° 33' 17.662" W
Comment						
Congressional Location						
Quarter 3 SW	Quarter 4 NE	Section 21	Township 4	Twnshp N/S Dir N	Range 64	Range E/W Dir W
Rig Operator						
Rig/Unit Supervisor Shawn Johnson						
Daily Cost Summary						
Sum of Field Est (Cost) 0						
Wellbore Plug Back Total Depths						
Date	PBTD (ftOTH)	Method		Com		
3/7/2024						
Wellbore Sections						
Section Des		Hole Size (in)	Top Depth (ftOTH)		Btm Depth (ftOTH)	
Conductor		16				
Surface		13 1/2				
Production		8 1/2				
Zone Statuses						
Zone Name		Status Date		Status		
Niobrara		11/12/2024		Open		
Casing Strings						
Conductor, Actual, <DepthBtm>ftOTH						
Casing Description	Run Date	OD (in)	Wt/Len (l...)	Grade	Top Depth...	Set Depth...
Conductor	2/6/2024	16	84.00	J-55		
Surface, Actual, <DepthBtm>ftOTH						
Casing Description	Run Date	OD (in)	Wt/Len (l...)	Grade	Top Depth...	Set Depth...
Surface	3/4/2024	9 5/8	36.00	J-55		
Production, Actual, <DepthBtm>ftOTH						
Casing Description	Run Date	OD (in)	Wt/Len (l...)	Grade	Top Depth...	Set Depth...
Production	3/7/2024	5 1/2	20.00	P-110		
Cement						
Des		Start Date		Top (ftOTH)		Btm (ftOTH)
Conductor Cement		2/6/2024				
Surface		3/4/2024				
Production Casing Cement		3/7/2024				
Proposed Cement						
Des		Top (ftOTH)		Btm (ftOTH)		
Tubing Strings						
Tubing Description	Run Date	String...	ID (in)	Wt (lb/ft)	Grade	Len (ft) Set De...
Tubing - Production	11/2/2024	2 3/8	1.995	4.70	L-80	7,884.57
Tubing Components						
Item Des	OD (in)	Wt (lb/ft)	Grade	Jts	Len (ft)	Btm (TVD) (ftOTH)
Tubing Hanger	5.3			1	0.85	
Tubing	2 3/8	4.70	L-80	229	7,516.21	
X-Nipple	2 3/8			1	0.95	
Tubing	2 3/8	4.70	L-80	11	358.78	
XN - Nipple	2 3/8			1	1.03	
Tubing Pup Joint	2 3/8	4.70	L-80	1	6.05	
Ceramic disc sub	2 3/8			1	0.70	
Other In Hole						
Run Date	Des		Make	OD (in)	Top (ftOTH)	Btm (ftOTH)



Wellbore Schematic Input Report

Well Name: George 01N

Original Hole [Land]			Perforation Data				
MD (ftOHT)	Incl (°)	Vertical schematic (actual)	Linked Zone	Sum of Entered Shot Total	Top (ftOTH)	Btm (ftOTH)	Date
25.9	0.3	Wellhead, 9 5/8in; 26.5; 25 TVD; 1.51; 25-26.5 TVD; 25-26.5	Niobrara, Original Hole	4			9/27/2024
31.5	0.3	Casing Joints, 16in; 105; 25 TVD; 80.00; 25-105 TVD; 25-105	Niobrara, Original Hole	4			9/26/2024
1,045.9	22.7	Casing joints, 9 5/8in; 2000.7; 31.5 TVD; 1,969.15; 31.5-1871.7 TVD; 31.5-2000.7	Niobrara, Original Hole	4			9/26/2024
2,002.0	31.9		Niobrara, Original Hole	4			9/26/2024
2,039.7	30.9	Casing Joints, 5 1/2in; 3542.7; 25 TVD; 3,517.69; 25-3169.6 TVD; 25-3542.7	Niobrara, Original Hole	4			9/26/2024
3,563.6	33.2		Niobrara, Original Hole	4			9/26/2024
6,636.5	33.0	Casing joints, 9 5/8in; 2038.2; 1872.9 TVD; 36.12; 1872.9-1903.7 TVD; 2002-2038.2	Niobrara, Original Hole	4			9/26/2024
7,543.0	44.3		Niobrara, Original Hole	4			9/26/2024
7,902.9	74.4	Casing Joints, 5 1/2in; 6615.5; 3187.2 TVD; 3,051.76; 3187.2-5738.8 TVD; 3563.8-6615.5	Niobrara, Original Hole	4			9/26/2024
7,909.4	74.7		Niobrara, Original Hole	4			9/26/2024
8,138.5	88.3	Casing Joints, 5 1/2in; 8136.9; 5756.4 TVD; 1,500.39; 5756.4-6783.8 TVD; 6636.5-8136.9	Niobrara, Original Hole	4			9/26/2024
8,408.1	89.8		Niobrara, Original Hole	4			9/26/2024
8,680.1	89.9		Niobrara, Original Hole	4			9/26/2024
8,953.1	90.0		Niobrara, Original Hole	4			9/26/2024
9,226.1	89.9		Niobrara, Original Hole	4			9/26/2024
9,498.0	89.8		Niobrara, Original Hole	4			9/26/2024
9,771.0	90.0		Niobrara, Original Hole	4			9/26/2024
10,044.0	90.0		Niobrara, Original Hole	4			9/26/2024
10,315.9	89.7		Niobrara, Original Hole	4			9/26/2024
10,588.9	90.0	Casing Joints, 5 1/2in; 13205.5; 6783.8 TVD; 5,066.90; 6783.8-6801.8 TVD; 8138.6-13205.5	Niobrara, Original Hole	4			9/26/2024
10,861.9	89.8		Niobrara, Original Hole	4			9/26/2024
11,133.9	89.9		Niobrara, Original Hole	4			9/26/2024
11,407.2	89.8		Niobrara, Original Hole	4			9/26/2024
11,675.9	89.8		Niobrara, Original Hole	4			9/26/2024
11,952.1	89.9		Niobrara, Original Hole	4			9/26/2024
12,225.1	89.8		Niobrara, Original Hole	4			9/26/2024
12,498.0	89.8		Niobrara, Original Hole	4			9/26/2024
12,770.0	89.5		Niobrara, Original Hole	4			9/26/2024
13,043.0	89.4		Niobrara, Original Hole	4			9/25/2024
13,205.4	89.4	Marker Joint A, 5 1/2in; 13245.8; 6802 TVD; 20.52; 6802-6802.2 TVD; 13225.3-13245.8	Niobrara, Original Hole	4			9/25/2024
13,245.7	89.4		Niobrara, Original Hole	4			9/25/2024
13,344.2	89.4		Niobrara, Original Hole	4			9/25/2024
13,617.1	89.4		Niobrara, Original Hole	4			9/25/2024
13,890.1	89.2		Niobrara, Original Hole	4			9/25/2024
14,162.1	89.6		Niobrara, Original Hole	4			9/25/2024
14,435.0	89.5		Niobrara, Original Hole	4			9/25/2024
14,708.0	89.3		Niobrara, Original Hole	4			9/25/2024
14,980.0	89.3		Niobrara, Original Hole	4			9/25/2024
15,253.0	89.6		Niobrara, Original Hole	4			9/25/2024
15,525.9	89.4		Niobrara, Original Hole	4			9/25/2024
15,797.9	89.4		Niobrara, Original Hole	4			9/25/2024
16,070.9	89.4		Niobrara, Original Hole	4			9/25/2024
16,344.2	89.5		Niobrara, Original Hole	4			9/25/2024
16,616.1	89.4		Niobrara, Original Hole	4			9/25/2024
16,889.1	89.7		Niobrara, Original Hole	4			9/25/2024
17,162.1	89.8		Niobrara, Original Hole	4			9/25/2024
17,434.1	90.0		Niobrara, Original Hole	4			9/25/2024
17,707.0	89.9	Casing Pup Joint, 5 1/2in; 18263.3; 6842.8 TVD; 5.17; 6842.8-6842.8 TVD; 18258.1-18263.3	Niobrara, Original Hole	4			9/25/2024
17,980.0	89.7		Niobrara, Original Hole	4			9/25/2024
18,253.0	90.0	Casing Pup Joint, 5 1/2in; 18278.7; 6842.8 TVD; 9.57; 6842.8-6842.8 TVD; 18269.2-18278.7	Niobrara, Original Hole	4			9/25/2024
18,258.2	90.0		Niobrara, Original Hole	4			9/24/2024
18,269.0	90.0		Niobrara, Original Hole	4			9/24/2024
18,278.9	90.0	Casing Pup Joint, 5 1/2in; 18290.3; 6842.8 TVD; 9.80; 6842.8-6842.8 TVD; 18280.5-18290.3	Niobrara, Original Hole	4			9/24/2024
18,290.4	90.0		Niobrara, Original Hole	4			9/24/2024



Wellbore Schematic Input Report

Well Name: George 01N

Original Hole [Land]			Perforation Data				
MD (fROTH)	Incl (°)	Vertical schematic (actual)	Linked Zone	Sum of Entered Shot Total	Top (fROTH)	Btm (fROTH)	Date
25.9	0.3	Wellhead, 9 5/8in; 26.5; 25 TVD; 1.51; 25-26.5 TVD; 25-26.5	Niobrara, Original Hole	4			9/24/2024
31.5	0.3	Casing Joints, 16in; 105; 25 TVD; 80.00; 25-105 TVD; 25-105	Niobrara, Original Hole	4			9/23/2024
1,045.9	22.7	Casing joints, 9 5/8in; 2000.7; 31.5 TVD; 1,969.15; 31.5-1871.7 TVD; 31.5-2000.7	Niobrara, Original Hole	4			9/23/2024
2,002.0	31.9		Niobrara, Original Hole	4			9/23/2024
2,039.7	30.9	Casing Joints, 5 1/2in; 3542.7; 25 TVD; 3,517.69; 25-3169.6 TVD; 25-3542.7	Niobrara, Original Hole	4			9/23/2024
3,563.6	33.2		Niobrara, Original Hole	4			9/23/2024
6,636.5	33.0	Casing joints, 9 5/8in; 2038.2; 1872.9 TVD; 36.12; 1872.9-1903.7 TVD; 2002-2038.2	Niobrara, Original Hole	4			9/23/2024
7,543.0	44.3		Niobrara, Original Hole	4			9/23/2024
7,902.9	74.4	Casing Joints, 5 1/2in; 6615.5; 3187.2 TVD; 3,051.76; 3187.2-5738.8 TVD; 3563.8-6615.5	Niobrara, Original Hole	4			9/23/2024
7,909.4	74.7		Niobrara, Original Hole	4			9/23/2024
8,138.5	88.3	Casing Joints, 5 1/2in; 8136.9; 5756.4 TVD; 1,500.39; 5756.4-6783.8 TVD; 6636.5-8136.9	Niobrara, Original Hole	4			9/23/2024
8,408.1	89.8		Niobrara, Original Hole	4			9/23/2024
8,680.1	89.9		Niobrara, Original Hole	4			9/23/2024
8,953.1	90.0		Niobrara, Original Hole	4			9/23/2024
9,226.1	89.9		Niobrara, Original Hole	4			9/23/2024
9,498.0	89.8		Niobrara, Original Hole	4			9/23/2024
9,771.0	90.0		Niobrara, Original Hole	4			9/23/2024
10,044.0	90.0		Niobrara, Original Hole	4			9/22/2024
10,315.9	89.7		Niobrara, Original Hole	4			9/22/2024
10,588.9	90.0	Casing Joints, 5 1/2in; 13205.5; 6783.8 TVD; 5,066.90; 6783.8-6801.8 TVD; 8138.6-13205.5	Niobrara, Original Hole	4			9/22/2024
10,861.9	89.8		Niobrara, Original Hole	4			9/22/2024
11,133.9	89.9		Niobrara, Original Hole	4			9/22/2024
11,407.2	89.8		Niobrara, Original Hole	4			9/22/2024
11,675.9	89.8		Niobrara, Original Hole	4			9/22/2024
11,952.1	89.9		Niobrara, Original Hole	4			9/22/2024
12,225.1	89.8		Niobrara, Original Hole	4			9/22/2024
12,498.0	89.8		Niobrara, Original Hole	4			9/22/2024
12,770.0	89.5		Niobrara, Original Hole	4			9/22/2024
13,043.0	89.4		Niobrara, Original Hole	4			9/22/2024
13,205.4	89.4	Marker Joint A, 5 1/2in; 13245.8; 6802 TVD; 20.52; 6802-6802.2 TVD; 13225.3-13245.8	Niobrara, Original Hole	4			9/22/2024
13,245.7	89.4		Niobrara, Original Hole	4			9/22/2024
13,344.2	89.4		Niobrara, Original Hole	4			9/22/2024
13,617.1	89.4		Niobrara, Original Hole	4			9/22/2024
13,890.1	89.2		Niobrara, Original Hole	4			9/22/2024
14,162.1	89.6		Niobrara, Original Hole	4			9/22/2024
14,435.0	89.5		Niobrara, Original Hole	4			9/22/2024
14,708.0	89.3		Niobrara, Original Hole	4			9/22/2024
14,980.0	89.3		Niobrara, Original Hole	4			9/22/2024
15,253.0	89.6		Niobrara, Original Hole	4			9/22/2024
15,525.9	89.4		Niobrara, Original Hole	4			9/22/2024
15,797.9	89.4		Niobrara, Original Hole	4			9/22/2024
16,070.9	89.4		Niobrara, Original Hole	4			9/22/2024
16,344.2	89.5		Niobrara, Original Hole	4			9/22/2024
16,616.1	89.4		Niobrara, Original Hole	4			9/22/2024
16,889.1	89.7		Niobrara, Original Hole	4			9/21/2024
17,162.1	89.8		Niobrara, Original Hole	4			9/21/2024
17,434.1	90.0		Niobrara, Original Hole	4			9/21/2024
17,707.0	89.9	Casing Pup Joint, 5 1/2in; 18263.3; 6842.8 TVD; 5.17; 6842.8-6842.8 TVD; 18258.1-18263.3	Niobrara, Original Hole	4			9/21/2024
17,980.0	89.7		Niobrara, Original Hole	4			9/21/2024
18,253.0	90.0	Casing Pup Joint, 5 1/2in; 18278.7; 6842.8 TVD; 9.57; 6842.8-6842.8 TVD; 18269.2-18278.7	Niobrara, Original Hole	4			9/21/2024
18,258.2	90.0		Niobrara, Original Hole	4			9/21/2024
18,269.0	90.0		Niobrara, Original Hole	4			9/21/2024
18,278.9	90.0	Casing Pup Joint, 5 1/2in; 18290.3; 6842.8 TVD; 9.80; 6842.8-6842.8 TVD; 18280.5-18290.3	Niobrara, Original Hole	4			9/21/2024
18,290.4	90.0		Niobrara, Original Hole	4			9/21/2024



Wellbore Schematic Input Report

Well Name: George 01N

Original Hole [Land]			Perforation Data				
MD (ftOHT)	Incl (°)	Vertical schematic (actual)	Linked Zone	Sum of Entered Shot Total	Top (ftOTH)	Btm (ftOTH)	Date
25.9	0.3	Wellhead, 9 5/8in; 26.5; 25 TVD; 1.51; 25-26.5 TVD; 25-26.5	Niobrara, Original Hole	4			9/21/2024
31.5	0.3	Casing Joints, 16in; 105; 25 TVD; 80.00; 25-105 TVD; 25-105	Niobrara, Original Hole	4			9/21/2024
1,045.9	22.7	Casing joints, 9 5/8in; 2000.7; 31.5 TVD; 1,969.15; 31.5-1871.7 TVD; 31.5-2000.7	Niobrara, Original Hole	4			9/21/2024
2,002.0	31.9		Niobrara, Original Hole	4			9/21/2024
2,039.7	30.9	Casing Joints, 5 1/2in; 3542.7; 25 TVD; 3,517.69; 25-3169.6 TVD; 25-3542.7	Niobrara, Original Hole	4			9/21/2024
3,563.6	33.2		Niobrara, Original Hole	4			9/21/2024
6,636.5	33.0	Casing joints, 9 5/8in; 2038.2; 1872.9 TVD; 36.12; 1872.9-1903.7 TVD; 2002-2038.2	Niobrara, Original Hole	4			9/21/2024
7,543.0	44.3		Niobrara, Original Hole	4			9/21/2024
7,902.9	74.4	Casing Joints, 5 1/2in; 6615.5; 3187.2 TVD; 3,051.76; 3187.2-5738.8 TVD; 3563.8-6615.5	Niobrara, Original Hole	4			9/21/2024
7,909.4	74.7		Niobrara, Original Hole	4			9/21/2024
8,138.5	88.3	Casing Joints, 5 1/2in; 8136.9; 5756.4 TVD; 1,500.39; 5756.4-6783.8 TVD; 6636.5-8136.9	Niobrara, Original Hole	4			9/21/2024
8,408.1	89.8		Niobrara, Original Hole	4			9/20/2024
8,680.1	89.9		Niobrara, Original Hole	4			9/20/2024
8,953.1	90.0		Niobrara, Original Hole	4			9/20/2024
9,226.1	89.9		Niobrara, Original Hole	4			9/20/2024
9,498.0	89.8		Niobrara, Original Hole	4			9/20/2024
9,771.0	90.0		Niobrara, Original Hole	4			9/20/2024
10,044.0	90.0		Niobrara, Original Hole	4			9/20/2024
10,315.9	89.7		Niobrara, Original Hole	4			9/20/2024
10,588.9	90.0	Casing Joints, 5 1/2in; 13205.5; 6783.8 TVD; 5,066.90; 6783.8-6801.8 TVD; 8138.6-13205.5	Niobrara, Original Hole	4			9/20/2024
10,861.9	89.8		Niobrara, Original Hole	4			9/20/2024
11,133.9	89.9		Niobrara, Original Hole	4			9/20/2024
11,407.2	89.8		Niobrara, Original Hole	4			9/20/2024
11,675.9	89.8		Niobrara, Original Hole	4			9/20/2024
11,952.1	89.9		Niobrara, Original Hole	4			9/20/2024
12,225.1	89.8		Niobrara, Original Hole	4			9/20/2024
12,498.0	89.8		Niobrara, Original Hole	4			9/20/2024
12,770.0	89.5		Niobrara, Original Hole	4			9/20/2024
13,043.0	89.4		Niobrara, Original Hole	4			9/20/2024
13,205.4	89.4	Marker Joint A, 5 1/2in; 13245.8; 6802 TVD; 20.52; 6802-6802.2 TVD; 13225.3-13245.8	Niobrara, Original Hole	4			9/20/2024
13,245.7	89.4		Niobrara, Original Hole	4			9/20/2024
13,344.2	89.4		Niobrara, Original Hole	4			9/20/2024
13,617.1	89.4		Niobrara, Original Hole	4			9/20/2024
13,890.1	89.2		Niobrara, Original Hole	4			9/19/2024
14,162.1	89.6		Niobrara, Original Hole	4			9/19/2024
14,435.0	89.5		Niobrara, Original Hole	4			9/19/2024
14,708.0	89.3		Niobrara, Original Hole	4			9/19/2024
14,980.0	89.3		Niobrara, Original Hole	4			9/19/2024
15,253.0	89.6		Niobrara, Original Hole	4			9/19/2024
15,525.9	89.4		Niobrara, Original Hole	4			9/19/2024
15,797.9	89.4		Niobrara, Original Hole	4			9/19/2024
16,070.9	89.4		Niobrara, Original Hole	4			9/19/2024
16,344.2	89.5		Niobrara, Original Hole	4			9/19/2024
16,616.1	89.4		Niobrara, Original Hole	4			9/19/2024
16,889.1	89.7		Niobrara, Original Hole	4			9/19/2024
17,162.1	89.8		Niobrara, Original Hole	4			9/19/2024
17,434.1	90.0		Niobrara, Original Hole	4			9/19/2024
17,707.0	89.9	Casing Pup Joint, 5 1/2in; 18263.3; 6842.8 TVD; 5.17; 6842.8-6842.8 TVD; 18258.1-18263.3	Niobrara, Original Hole	4			9/19/2024
17,980.0	89.7		Niobrara, Original Hole	4			9/19/2024
18,253.0	90.0	Casing Pup Joint, 5 1/2in; 18278.7; 6842.8 TVD; 9.57; 6842.8-6842.8 TVD; 18269.2-18278.7	Niobrara, Original Hole	4			9/19/2024
18,258.2	90.0		Niobrara, Original Hole	4			9/19/2024
18,269.0	90.0		Niobrara, Original Hole	4			9/19/2024
18,278.9	90.0	Casing Pup Joint, 5 1/2in; 18290.3; 6842.8 TVD; 9.80; 6842.8-6842.8 TVD; 18280.5-18290.3	Niobrara, Original Hole	4			9/19/2024
18,290.4	90.0		Niobrara, Original Hole	4			9/19/2024
Total				900			8/5/2024
Job Supply Amounts							
Supply Item Des		Job Supply Type		Uni...	Job Category		Total... Total... Total...
Daily Cost Breakdown by Category							
Field Est (Cost)		Description			Note		