



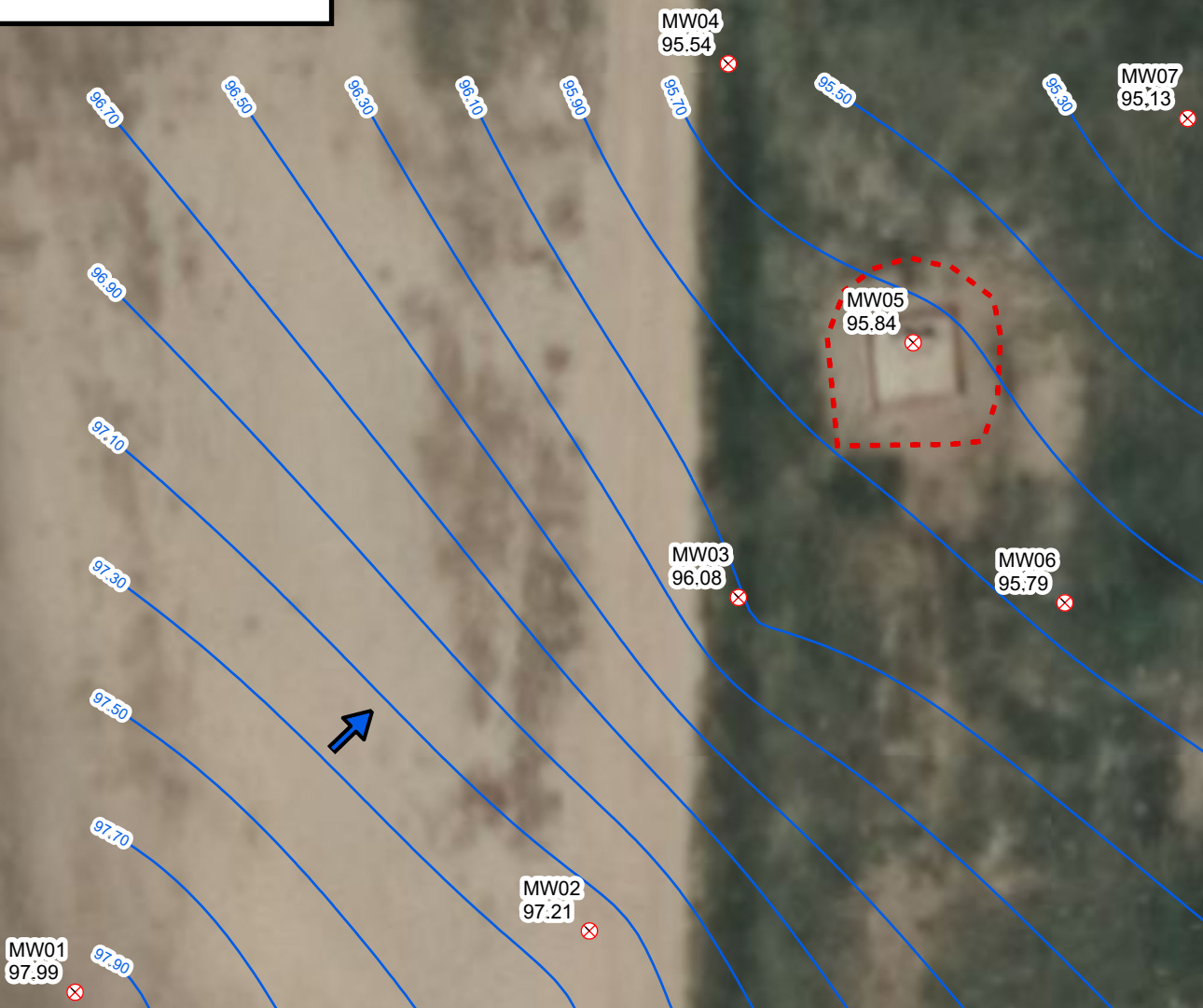


## Legend

-  Active Monitoring Well
-  Relative Groundwater Elevation Contour
-  Excavation Extent
-  Surveyed Groundwater Flow Direction

Notes  
Contour Interval = 0.2 Feet



Sources: Environmental Systems Research Institute (ESRI)



## Groundwater Elevation Contour Map (9/27/2024)

Berig UPRR 42-35 1 Wellhead  
Kerr-McGee Oil & Gas Onshore, LP  
SENE SEC 35-T4N-R66W  
Weld County, CO

Project Number: 09A1662056

FIGURE  
**2**