

Inspection Photos

Loc: 334549

Operator: **OXY USA INC**

Inspection Date: 11/25/2024

County: Huerfano



COLORADO

**Energy & Carbon Management
Commission**

Department of Natural Resources

Inspection Photos



Photo 1. Facing toward the access road. The cattleguard has filled in with sediment and will need to be cleaned out..



COLORADO
Energy & Carbon Management
Commission

Department of Natural Resources

Loc:334549 | Date: 11/25/2024

Inspection Photos



Photo 2. Facing north toward the location.



Inspection Photos



Photo 3. There are contaminate piles stored on location with a liner however material is falling over the liner berm.



Photo 4. There are contaminate piles stored on location with a liner however material is falling over the liner berm.



COLORADO
Energy & Carbon Management
Commission
Department of Natural Resources

Inspection Photos



Photo 5. There are contaminate piles stored on location with a liner however material is falling over the liner berm. There is blacken material spread off of the liner.



Photo 6. There is blacken material spread off of the liner.



COLORADO
Energy & Carbon Management
Commission
Department of Natural Resources

Inspection Photos



Photo 7. Facing northwest toward the abandoned well where remediation is in process.



Inspection Photos



Photo 8. Facing toward the pit where remediation is in process.



COLORADO
Energy & Carbon Management
Commission
Department of Natural Resources

Loc:334549 | Date: 11/25/2024

Inspection Photos



Photo 9. There appears to be impacted stained material shown at red arrows that needs to be further excavated and removed.



COLORADO
Energy & Carbon Management
Commission

Department of Natural Resources

Loc:334549 | Date: 11/25/2024

Inspection Photos

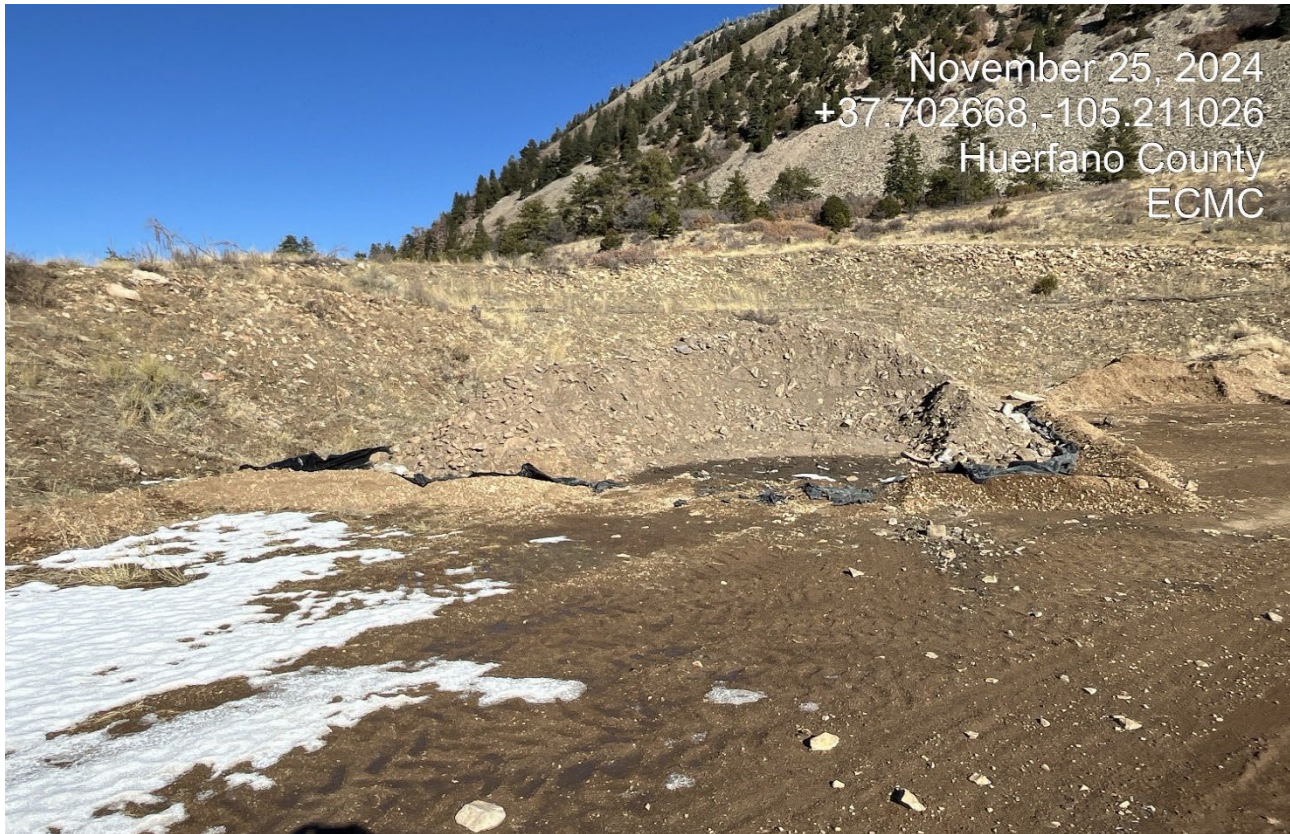


Photo 10. Facing toward contaminate material stored at the north side of the location. The berm has been knocked down and the plastic liner is torn.



Inspection Photos



Photo 11. The waste material is contained and the liner is torn.



Inspection Photos



Photo 12. Facing southeast toward the location.

