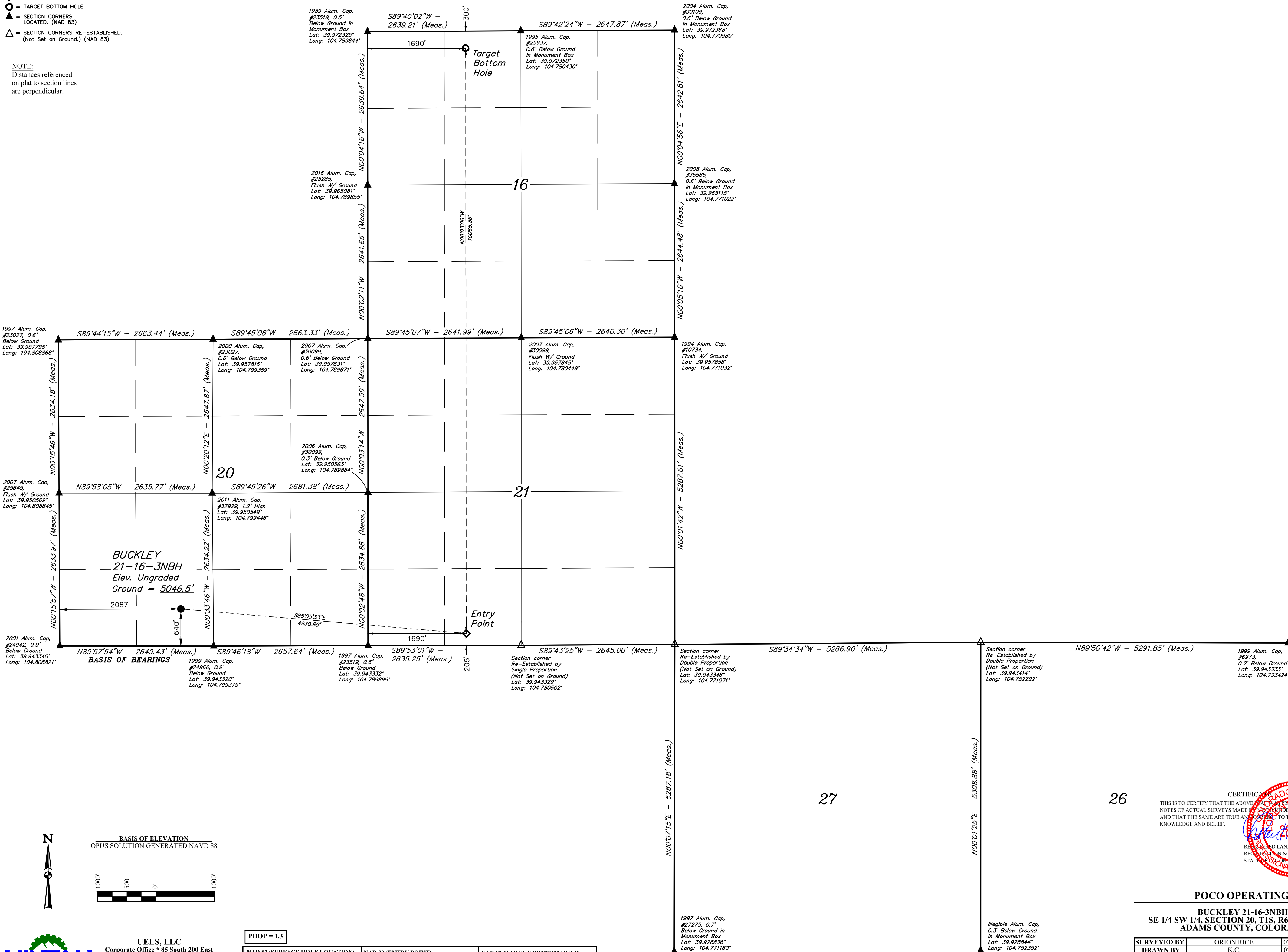


LEGEND:

- = SURFACE LOCATION.
- ◇ = ENTRY POINT.
- = TARGET BOTTOM HOLE.
- ▲ = SECTION CORNERS LOCATED. (NAD 83)
- △ = SECTION CORNERS RE-ESTABLISHED. (Not Set on Ground.) (NAD 83)

NOTE:
Distances referenced on plat to section lines are perpendicular.



BUCKLEY 21-16-3NBH
Elev. Ungraded Ground = 5046.5'

BASIS OF BEARINGS
N89°57'54"W - 2649.43' (Meas.)
S89°46'18"W - 2657.64' (Meas.)
S89°53'01"W - 2635.25' (Meas.)
S89°43'25"W - 2645.00' (Meas.)
S89°34'34"W - 5266.90' (Meas.)
N89°50'42"W - 5291.85' (Meas.)

BASIS OF ELEVATION
OPUS SOLUTION GENERATED NAVD 88

1000'
500'
0'
500'
1000'

UJINTAH
ENGINEERING & LAND SURVEYING

UELS, LLC
Corporate Office * 85 South 200 East
Vernal, UT 84078 * (435) 789-1017

PDOP = 1.3

NAD 83 (SURFACE HOLE LOCATION)	NAD 83 (ENTRY POINT)	NAD 83 (TARGET BOTTOM HOLE)
LATITUDE = 39°5642.29" (39.945081°)	LATITUDE = 39°5638.01" (39.943892°)	LATITUDE = 39°5817.46" (39.971517°)
LONGITUDE = 104°4804.99" (104.801385°)	LONGITUDE = 104°4701.94" (104.783872°)	LONGITUDE = 104°4701.74" (104.783817°)

Illegible Alum. Cap.
#27275, 0.7'
Below Ground in Monument Box
Lat: 39.928836°
Long: 104.771160°

REV: 01 11-22-24 K.C. (UPDATE EP & BH)

CERTIFICATE OF RECORDING
THIS IS TO CERTIFY THAT THE ABOVE DESCRIBED PLAT AND NOTES OF ACTUAL SURVEYS MADE BY ME UNDER MY SIGNATURE AND THAT THE SAME ARE TRUE AND CORRECT TO THE BEST OF MY KNOWLEDGE AND BELIEF.

POCO OPERATING
BUCKLEY 21-16-3NBH
SE 1/4 SW 1/4, SECTION 20, T1S, R66W, 6th P.M.
ADAMS COUNTY, COLORADO

SURVEYED BY	ORION RICE	02-24-22	SCALE
DRAWN BY	K.C.	07-18-23	1" = 1000'

WELL LOCATION PLAT