


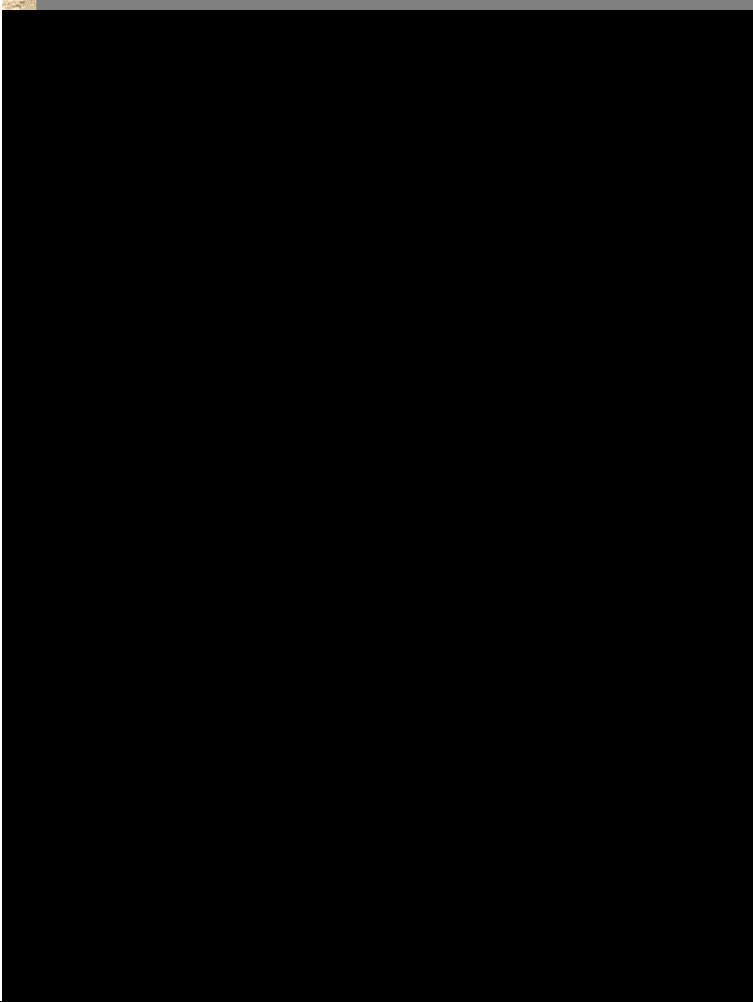


FLOWLINE ABANDONMENT FORM

SITE NAME: D. L. Phillips 24-31							DATE: 10/18/2024	REM. PROJECT #: 36818	WEATHER: Cloudy 50s		
SITE DIRECTIONS: CR 54 and 25, W .2 mi, N 1/10 into site area							CLIENT: PDC				
LEGALS AND LAT/LONG: 40.383720, -104.843140							TASMAN PERSONNEL: M. Reynolds, J.Basilotta				
SOIL TYPES: Well Graded Sand - SW							SURFACE GRADIENT:				
SOIL SAMPLING							FACILITY INFRASTRUCTURE				
Date/Time	Soil Sample ID	PID (ppm)	Visual	Olfactory	Photo?	Grab or Lab Sample?	EQUIPMENT	Quantity	Photo?		
							Above Ground Storage Tank (AST)				
10-18-2024 11:09	FL01R-S@3'	0.1	No Staining	No Odor	Yes	Lab	Buried or Partially Buried Vessel				
10-18-2024 11:55	FL01R-W@3'	0.1	No Staining	No Odor	Yes	Lab	Separator				
10-18-2024 12:52	BKG01@3'	0.0	No Staining	No Odor	Yes	Lab	Emission Control Device (ECD)				
							Dump Line				
							Wellhead				
							Flowline	1			
							Other:				
							Soil Loads Removed				
							IMPACTED SOIL IDENTIFIED?				
							ESTIMATED VOLUME OF IMPACTS:				
							Date	Number	CY		
							Total Removed	0	0		
							Disposal Facility:				
							Groundwater Recovery				
							DATE GW ENCOUNTERED:			DEPTH:	
							GROUNDWATER IN CONTACT WITH IMPACTED SOIL?				
							LNAPL OR SHEEN OBSERVED ON GW?				
GROUNDWATER SAMPLING							Date	BBLs			
Date/Time	Groundwater Sample ID	Depth Collected	Turbid?	Sheen?	Odor?	Photo?					
							Total Removed	0			
							Disposal Facility:				



Photographic Log

					
Material: Steel	Volume:	Contents: Oil/Gas/Water	Material: Steel	Volume:	Contents: Oil/Gas/Water
Notes/Conditions: Facing east			Notes/Conditions: Facing east		


							
Equipment ID: BKG01@3'		Equipment Type:		Equipment ID:		Equipment Type:	
Material:		Volume:		Material:		Volume:	
Contents:				Contents:			
Notes/Conditions: Facing east				Notes/Conditions:			

TABLE 1
FIELD DATA SUMMARY TABLE
PDC ENERGY, INC. - 69175
FORMER D. L. PHILLIPS 24-31 WELLHEAD, WELD COUNTY, COLORADO
REM # 36818

Sample ID	Sample Date	Depth (ft. bgs)	GPS Data Latitude/Longitude		PDOP Value	VOC Concentration (ppm)
FL01R-W@3'	10/18/24	3	40.383701	-104.843133	0.9	0.1
FL01R-S@3'	10/18/24	3	40.378429	-104.841703	0.9	0.1
BKG01@3'	10/18/24	3	40.383850	-104.843454	0.8	0.0

Notes:

1. Global Positioning System (GPS) data is provided in decimal degrees using North American Datum (NAD) 83 UTM Zone 13 North.

2. Volatile organic compound (VOC) concentrations are measured in the field using a photoionization detector (PID).

PDOP = Position Dilution of Precision

ppm = Parts per million

ft. = Feet

bgs = Below ground surface

TABLE 2
SUMMARY OF VOLATILE ORGANIC SOIL CHEMISTRY DATA
PDC ENERGY, INC. - 69175
FORMER D. L. PHILLIPS 24-31 WELLHEAD, WELD COUNTY, COLORADO
REM # 36818

Sample ID	Sample Date	Depth (ft. bgs)	Benzene (mg/kg)	Toluene (mg/kg)	Ethyl-Benzene (mg/kg)	Xylenes (mg/kg)	1,2,4-Trimethyl-Benzene (mg/kg)	1,3,5-Trimethyl-Benzene (mg/kg)	Naphthalene (mg/kg)	TPH (mg/kg)	TPH GRO (mg/kg)	TPH DRO (mg/kg)	TPH ORO (mg/kg)
ECMC Table 915-1 Limits (Residential SSL)			1.2	490	5.8	58	30	27	2	500	500**		
ECMC Table 915-1 Limits (Protection of Groundwater SSL)			0.0026	0.69	0.78	9.9	0.0081	0.0087	0.0038	500	500**		
FL01R-S@3'	10/18/24	3	<0.0020	<0.0050	<0.0050	<0.010	<0.0050	<0.0050	<0.0038	<50	<0.50	<50	<500
FL01R-W@3'	10/18/24	3	<0.0020	<0.0050	<0.0050	<0.010	<0.0050	<0.0050	<0.0038	<50	<0.50	<50	<500

Notes:

1. **Bold** values exceed the ECMC Table 915-1 limit(s).
2. Pink & blue highlighted soil analytical values indicate an exceedance of the referenced soil screening level (SSL).
3. ** Summation of GRO+DRO+ORO must be less than 500 mg/kg.

ECMC = Energy & Carbon Management Commission

(<) = Analytical result is less than the indicated laboratory reporting limit.

TPH-GRO = Total petroleum hydrocarbons - gasoline range organics

TPH-DRO = Total petroleum hydrocarbons - diesel range organics

TPH-ORO = Total petroleum hydrocarbons - oil range organics

mg/kg = Milligrams per kilogram

ft. = Feet

bgs = Below ground surface

TABLE 3
SUMMARY OF POLYCYCLIC AROMATIC HYDROCARBON SOIL CHEMISTRY DATA
PDC ENERGY, INC. - 69175
FORMER D. L. PHILLIPS 24-31 WELLHEAD, WELD COUNTY, COLORADO
REM # 36818

Sample ID	Sample Date	Depth (ft. bgs)	Acenaphthene (mg/kg)	Anthracene (mg/kg)	Benzo (a) Anthracene (mg/kg)	Benzo (a) Pyrene (mg/kg)	Benzo (b) Fluoranthene (mg/kg)	Benzo (k) Fluoranthene (mg/kg)	Chrysene (mg/kg)	Dibenzo (a,h) Anthracene (mg/kg)	Fluoranthene (mg/kg)	Fluorene (mg/kg)	Indeno (1,2,3-cd) Pyrene (mg/kg)	Pyrene (mg/kg)	1-Methyl - Naphthalene (mg/kg)	2-Methyl- Naphthalene (mg/kg)
ECMC Table 915-1 Limits (Residential SSL)			360	1,800	1.1	0.11	1.1	11	110	0.11	240	240	1.1	180	18	24
ECMC Table 915-1 Limits (Protection of Groundwater SSL)			0.55	5.8	0.011	0.24	0.3	2.9	9	0.096	8.9	0.54	0.98	1.3	0.006	0.019
FL01R-S@3'	10/18/24	3	<0.00500	<0.00500	<0.00500	<0.00500	<0.00500	<0.00500	<0.00500	<0.00500	<0.00500	<0.00500	<0.00500	<0.00500	<0.00500	<0.00500
FL01R-W@3'	10/18/24	3	<0.00500	<0.00500	<0.00500	<0.00500	<0.00500	<0.00500	<0.00500	<0.00500	<0.00500	<0.00500	<0.00500	<0.00500	<0.00500	<0.00500

Notes:

1. **Bold** values exceed the ECMC Table 915-1 limit(s).
2. Pink & blue highlighted soil analytical values indicate an exceedance of the referenced soil screening level (SSL).

ECMC = Colorado Energy & Carbon Management Commission

(<) = Analytical result is less than the indicated laboratory reporting limit.

ft. = Feet

bgs = Below ground surface

mg/kg = Milligrams per kilogram

TABLE 4
SUMMARY OF SOIL SUITABILITY FOR RECLAMATION
PDC ENERGY, INC. - 69175
FORMER D. L. PHILLIPS 24-31 WELLHEAD, WELD COUNTY, COLORADO
REM # 36818

Sample ID	Sample Date	Depth (ft. bgs)	pH (Standard Units)	EC (mmhos/cm)	SAR (Standard Units)	Boron (mg/L)
ECMC Table 915-1 Soil Suitability Limits			6 - 8.3	<4	<6	2
FL01R-S@3'	10/18/24	3	8.94	0.160	0.202	<2.00
FL01R-W@3'	10/18/24	3	8.54	0.260	0.392	<2.00
BKG01@3'	10/18/24	3	8.66	0.234	0.165	<2.00
Maximum Root Background Concentration (0 - 3 ft)			8.66	-	-	-
Mean Root Background Concentration (0 - 3 ft)			-	-	-	-

Notes:

1. **Bold** faced values exceed the ECMC Table 915-1 limit(s), but are within background concentrations.
2. **Bold** faced values exceed the ECMC Table 915-1 limit(s) and native background concentrations.
3. Brown highlighted soil analytical values indicate a regulatory exceedance.

ECMC = Colorado Energy & Carbon Management Commission

EC = Electrical conductivity

SAR = Sodium adsorption ratio

mmhos/cm = millimhos per centimeter

mg/L = milligram per liter

(<) = Analytical result is less than the indicated laboratory reporting limit.

ft. = Feet

bgs = Below ground surface

TABLE 5
SUMMARY OF METALS IN SOIL CHEMISTRY DATA
PDC ENERGY, INC. - 69175
FORMER D. L. PHILLIPS 24-31 WELLHEAD, WELD COUNTY, COLORADO
REM # 36818

Sample ID	Sample Date	Depth (ft. bgs)	Arsenic (mg/kg)	Barium (mg/kg)	Cadmium (mg/kg)	Chromium (VI) ^[4] (mg/kg)	Copper (mg/kg)	Lead (mg/kg)	Nickel (mg/kg)	Selenium (mg/kg)	Silver (mg/kg)	Zinc (mg/kg)
ECMC Table 915-1 Limits (Residential SSL)			0.68	15,000	71	0.3	3,100	400	1,500	390	390	23,000
ECMC Table 915-1 Limits (Protection of Groundwater SSL)			0.29	82	0.38	0.00067	46	14	26	0.26	0.8	370
FL01R-S@3'	10/18/2024	3	4.72	128	0.214	<0.30	5.77	7.88	7.10	<0.260	0.0655	22.4
FL01R-W@3'	10/18/2024	3	5.00	124	<0.200	<0.30	5.53	12.8	6.93	<0.260	0.0347	22.5
BKG01@3'	10/18/2024	3	4.64	118	<0.200	<0.30	5.88	8.25	6.81	<0.260	0.0412	21.6
Maximum Background Concentration			4.64	118	-	-	-	-	-	-	-	-
Maximum Background Concentration X 1.25			5.80	148	-	-	-	-	-	-	-	-
Mean Background Concentration			-	-	-	-	-	-	-	-	-	-
Mean Background Concentration X 1.25			-	-	-	-	-	-	-	-	-	-

Notes:

- Bold** faced values exceed the ECMC Table 915-1 limit(s), but are within 1.25x background concentrations.
- Bold** faced values exceed the ECMC Table 915-1 limit(s) and native background concentrations.
- Red & blue highlighted soil analytical values indicate an exceedance of the referenced soil screening level (SSL).
- Compound falls within ECMC Table 915-1 Footnote 9.
- Non-detect background results accounted for in the highest background concentration by using the reporting limit.

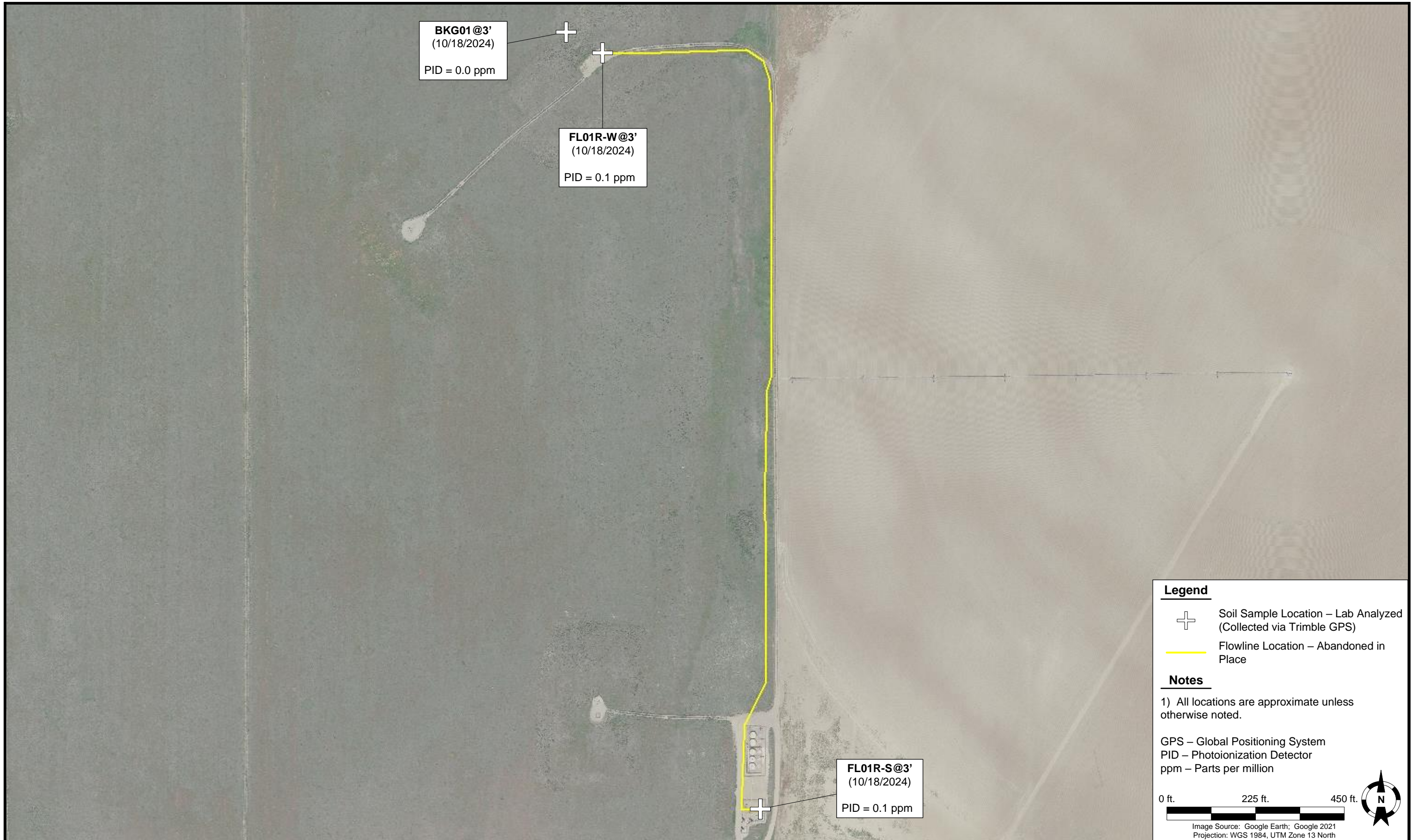
ECMC = Energy & Carbon Management Commission

(<) = Analytical result is less than the indicated laboratory reporting limit.



mg/kg = Milligrams per kilogram

ft. = Feet

bgs = Below ground surface



Legend

-  Soil Sample Location – Lab Analyzed (Collected via Trimble GPS)
-  Flowline Location – Abandoned in Place


Notes

1) All locations are approximate unless otherwise noted.

GPS – Global Positioning System
 PID – Photoionization Detector
 ppm – Parts per million

0 ft. 225 ft. 450 ft.

Image Source: Google Earth; Google 2021
 Projection: WGS 1984, UTM Zone 13 North



DATE:	October 18, 2024
DESIGNED BY:	B. Nelson
DRAWN BY:	L. Reed



TASMAN Tasman, Inc.
 6855 W 119th Avenue
 Broomfield, CO 80020

PDC Energy, Inc. – 69175 – DJ Basin
Former D. L. Phillips 24-31 Flowline
 NESW, Section 24, Township 5 North, Range 67 West
 Weld County, Colorado

SOIL SAMPLE
 LOCATION MAP
 (FLOWLINE)

FIGURE
 1