

## Inspection Photos

Location: LARAMIE ENERGY LLC Wagon Track Federal/12-8 Pad

Location ID: 312668

Date: 11/20/2024



Photo # 9354 Entrance to location

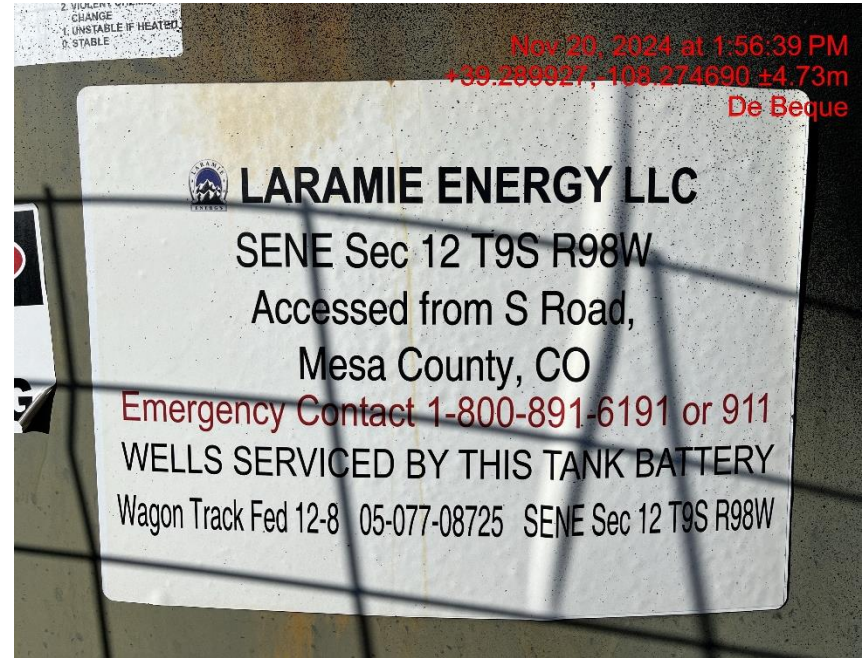


Photo # 9373 Location

## Inspection Photos

Location: LARAMIE ENERGY LLC Wagon Track Federal/12-8 Pad

Location ID: 312668

Date: 11/20/2024



Photo # 9356 Location



Photo # 9360 Location



## Inspection Photos

Location: LARAMIE ENERGY LLC Wagon Track Federal/12-8 Pad

Location ID: 312668

Date: 11/20/2024



Photo # 9367 Location



Photo # 9371 Location

## Inspection Photos

Location: LARAMIE ENERGY LLC Wagon Track Federal/12-8 Pad

Location ID: 312668

Date: 11/20/2024



Nov 20, 2024 at 2:26:08 PM  
+39.289984,-108.275127 ±4.74m  
De Beque



Nov 20, 2024 at 2:27:46 PM  
+39.289794,-108.275061 ±4.73m  
De Beque

Photo # 9401 NW corner of location

Photo # 9402 SW corner of location



## Inspection Photos

Location: LARAMIE ENERGY LLC Wagon Track Federal/12-8 Pad

Location ID: 312668

Date: 11/20/2024



Photo # 9403 SE corner of location



Photo # 9406 NE corner of location



## Inspection Photos

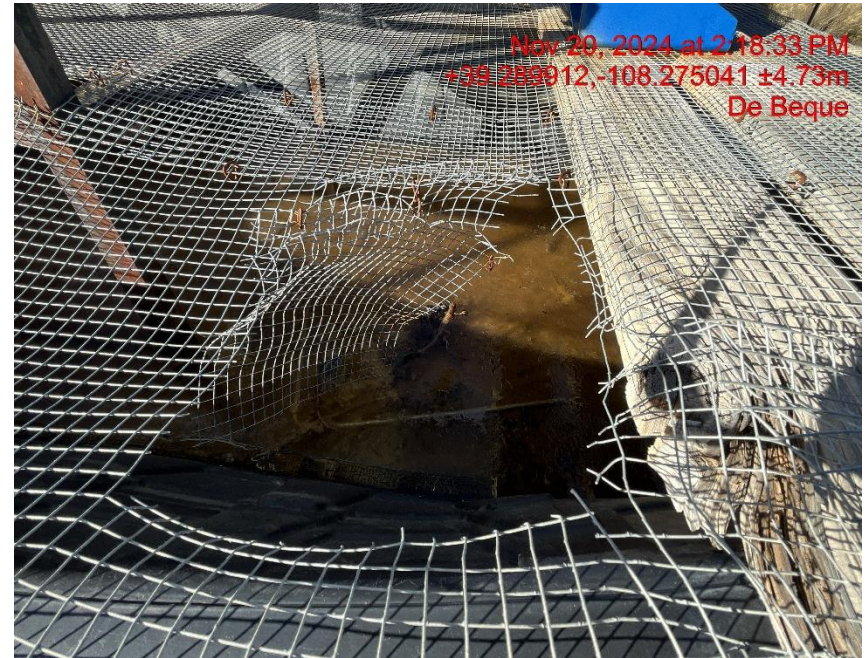
Location: LARAMIE ENERGY LLC Wagon Track Federal/12-8 Pad

Location ID: 312668

Date: 11/20/2024



**Photo # 9391 Wildlife protection for chemical containment needs maintenance/screen is damaged and open to wildlife**



**Photo # 9393 Wildlife protection for chemical containment needs maintenance/screen is damaged and open to wildlife**



## Inspection Photos

Location: LARAMIE ENERGY LLC Wagon Track Federal/12-8 Pad

Location ID: 312668

Date: 11/20/2024



Photo # 9397 Dead wildlife in chemical containment



Photo # 9398 Dead wildlife in chemical containment



## Inspection Photos

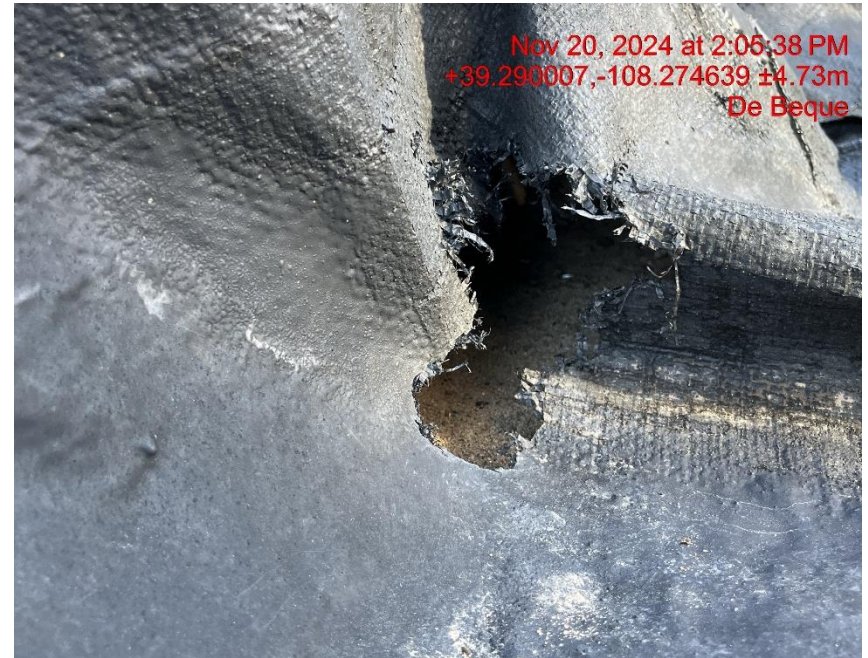
Location: LARAMIE ENERGY LLC Wagon Track Federal/12-8 Pad

Location ID: 312668

Date: 11/20/2024



**Photo # 9400 Dead wildlife in chemical containment**



**Photo # 9380 Multiple holes and tears in secondary containment liner/liner needs maintenance, also the liner is deteriorating and lacks integrity**

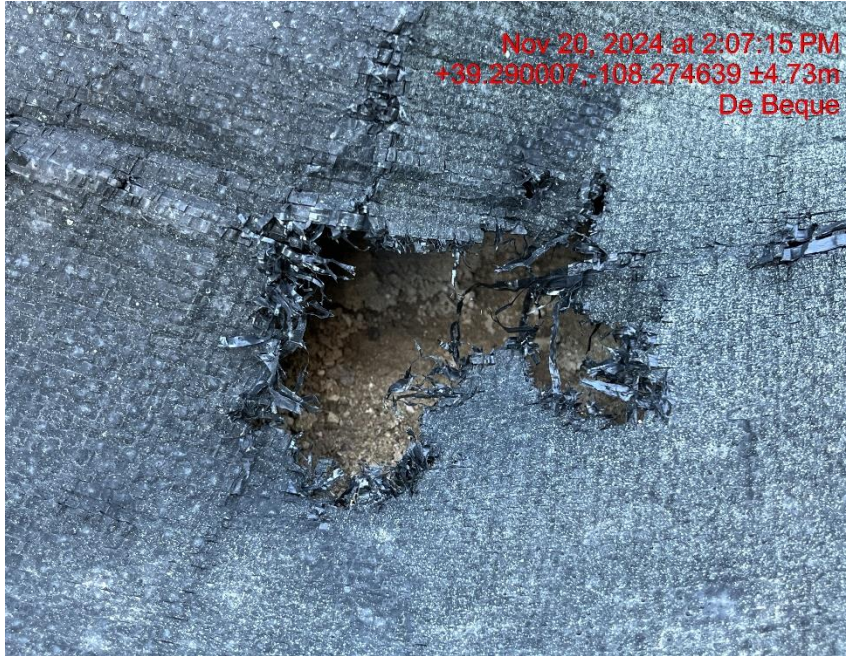


## Inspection Photos

Location: LARAMIE ENERGY LLC Wagon Track Federal/12-8 Pad

Location ID: 312668

Date: 11/20/2024



**Photo # 9381 Multiple holes and tears in secondary containment liner/liner needs maintenance, also the liner is deteriorating and lacks integrity**



**Photo # 9382 Multiple holes and tears in secondary containment liner/liner needs maintenance, also the liner is deteriorating and lacks integrity**

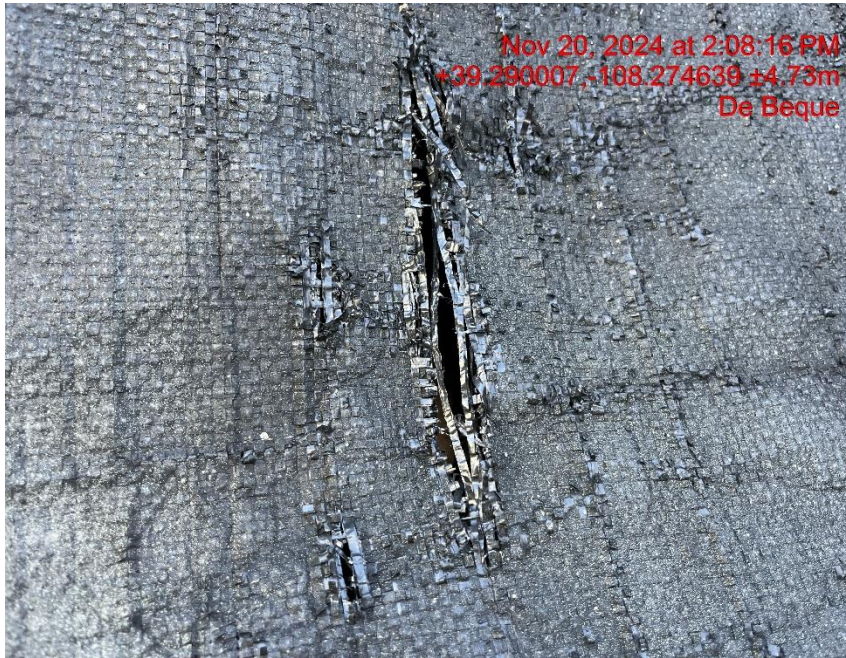


## Inspection Photos

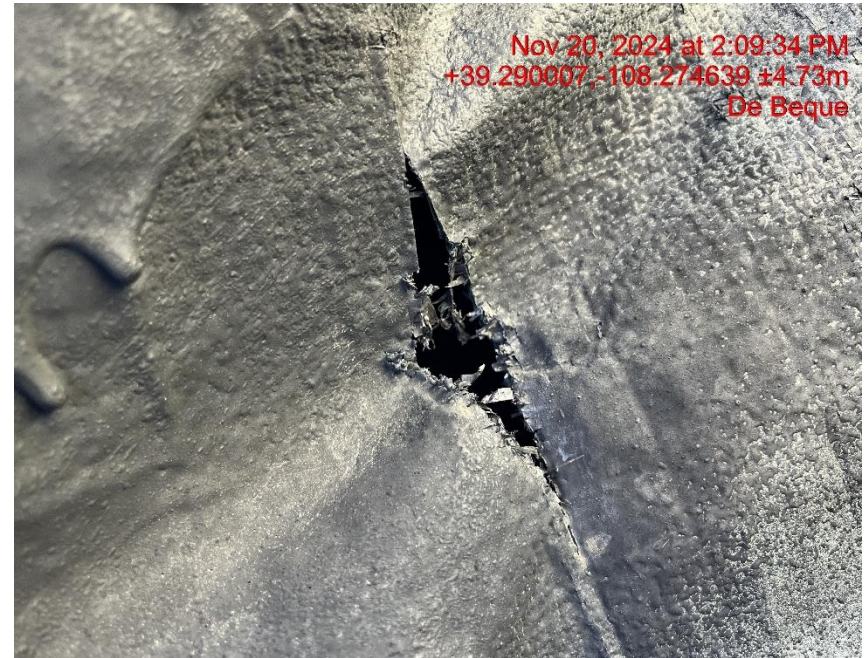
Location: LARAMIE ENERGY LLC Wagon Track Federal/12-8 Pad

Location ID: 312668

Date: 11/20/2024



**Photo # 9383 Multiple holes and tears in secondary containment liner/liner needs maintenance, also the liner is deteriorating and lacks integrity**



**Photo # 9384 Multiple holes and tears in secondary containment liner/liner needs maintenance, also the liner is deteriorating and lacks integrity**



## Inspection Photos

Location: LARAMIE ENERGY LLC Wagon Track Federal/12-8 Pad

Location ID: 312668

Date: 11/20/2024



Photo # 9385 Multiple holes and tears in secondary containment liner/liner needs maintenance, also the liner is deteriorating and lacks integrity



Photo # 9387 Multiple holes and tears in secondary containment liner/liner needs maintenance, also the liner is deteriorating and lacks integrity