

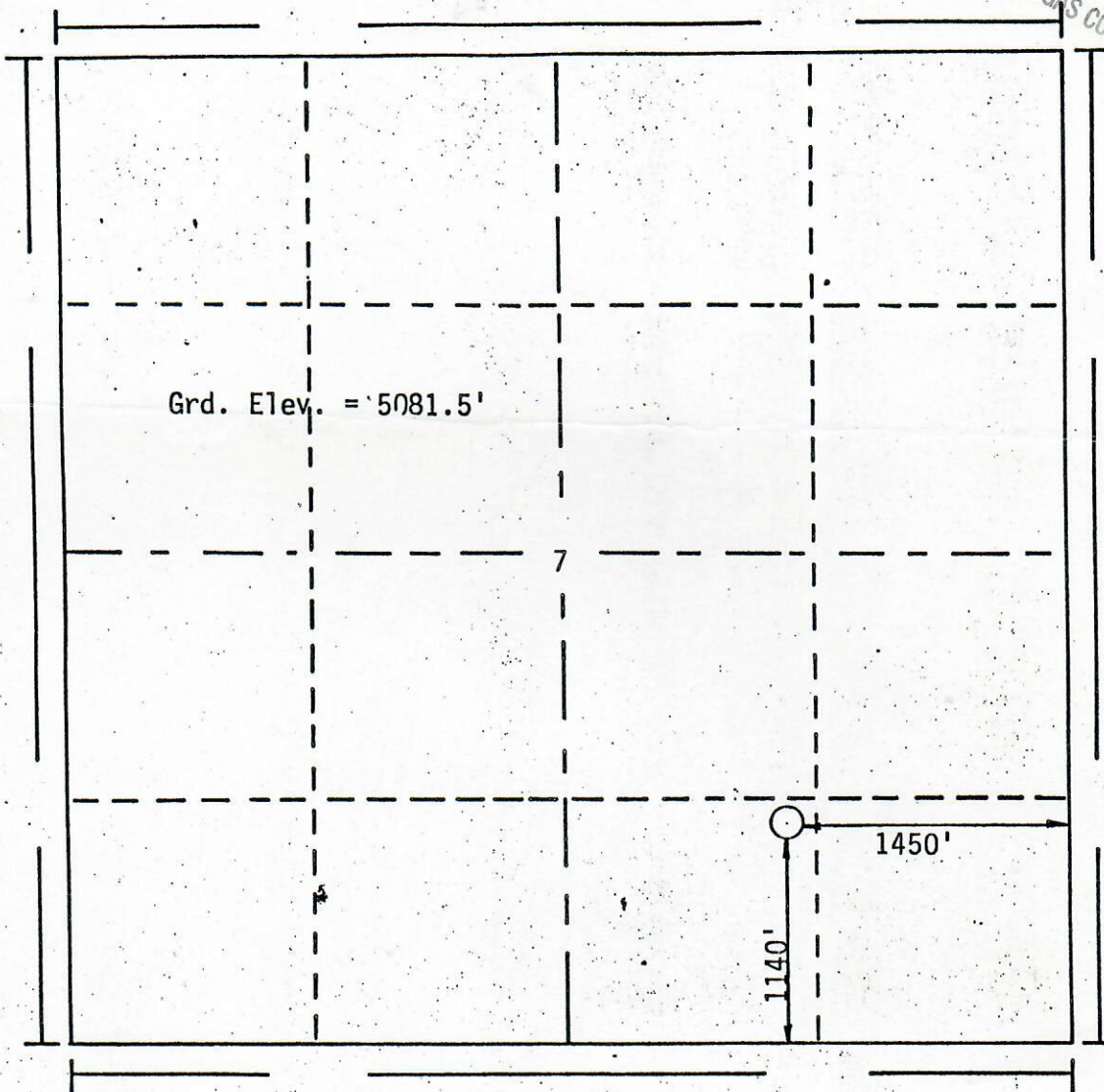


FORM F-106



00051040

R. 68 W

RECEIVED
JAN 6 1986
COLO. OIL & GAS CONS. COMM.

T. 1 N

Scale... 1" = 1000'

Powers Elevation of Denver, Colorado
has in accordance with a request from Cathy Pennington
for Vessels Oil & Gas Co.
determined the location of #2 THOMAS
to be 1140' fS 1450' fE Section 7 Township 1 N
Range 68 W of the Sixth Principal Meridian
Weld County, Colorado

I hereby certify that this plot is an
accurate representation of a correct
survey showing the location of
#2 THOMAS

Date: 16 March 85

Roy A. Rush
Licensed Land Surveyor No. 20693
State of Colorado

