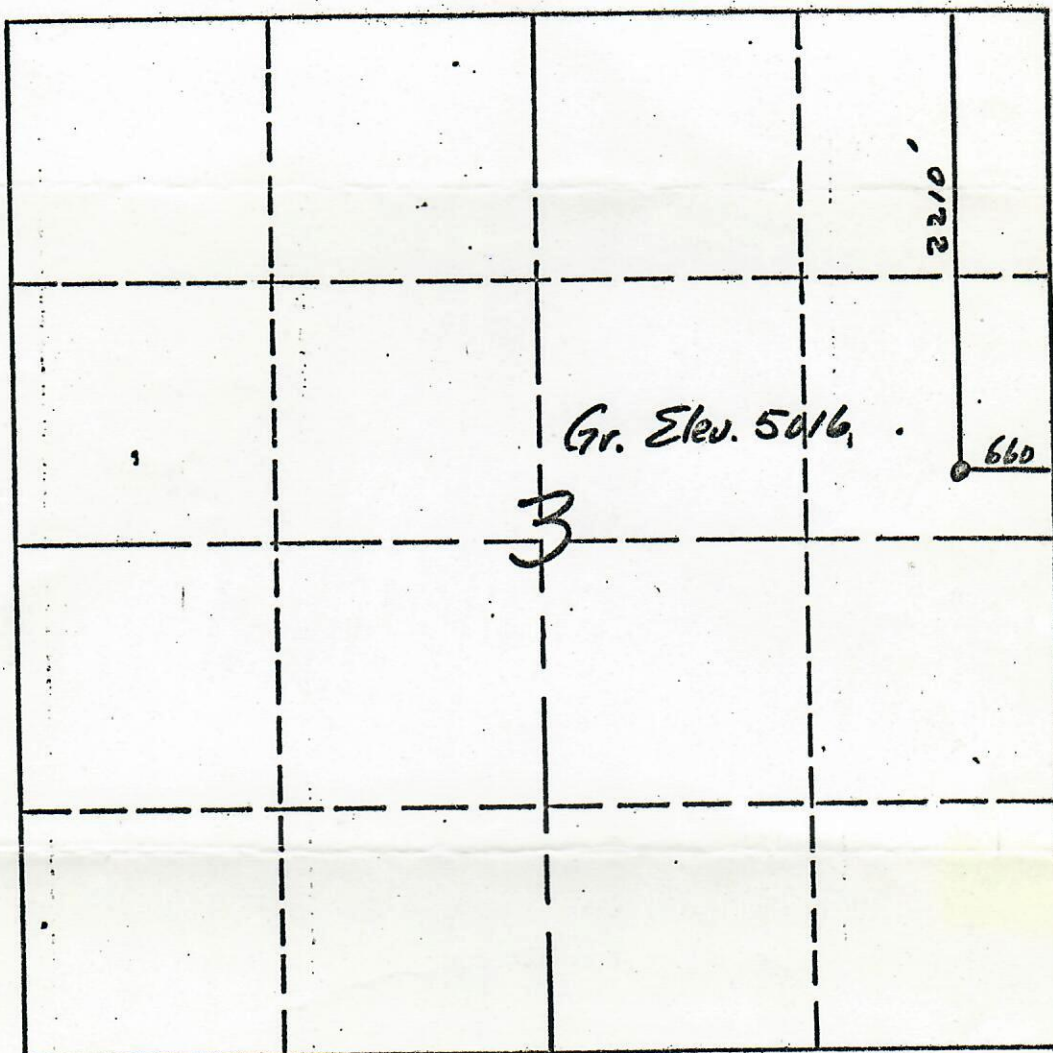


78-647

JUL 14 1978

R. 68



SCALE: 1"=1000



SAGE ENGINEERS, INC. of FORT LUPTON, COLORADO  
has in accordance with a request from *Bob Coldiron*  
for *AMOCO Production Co*  
determined the location of *Futura Horse Village 41-3 24*  
to be *2210' FNL, 660' FEL Sec 3, T1N, R68W*

I do hereby certify that this plat is a  
true and correct representation of a  
survey made under my direct supervision.

DATE: 7/7/78

SIGNED: *Gail A Bagley*  
LICENSED LAND SURVEYER NO. *12224*  
STATE OF COLORADO