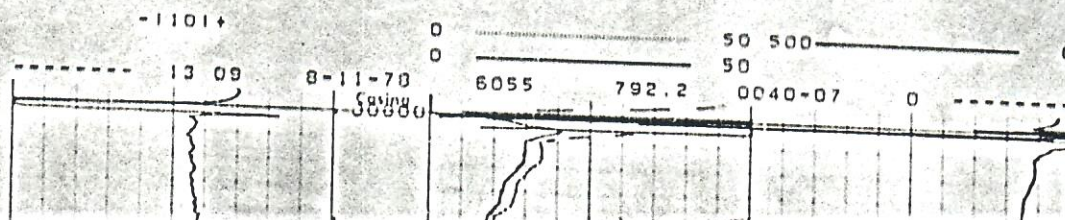




SPONTANEOUS POTENTIAL millivolts	RESISTIVITY ohms m ² /m	CONDUCTIVITY 1000 millimhos m ohms m ² /m
	16" NORMAL AMP. NORMAL	40" INDUCTION
	40" INDUCTION	



	0	
	0	

-1101+

0 50 500 0
 0 50
 6055 792.2 0040-07 0

