



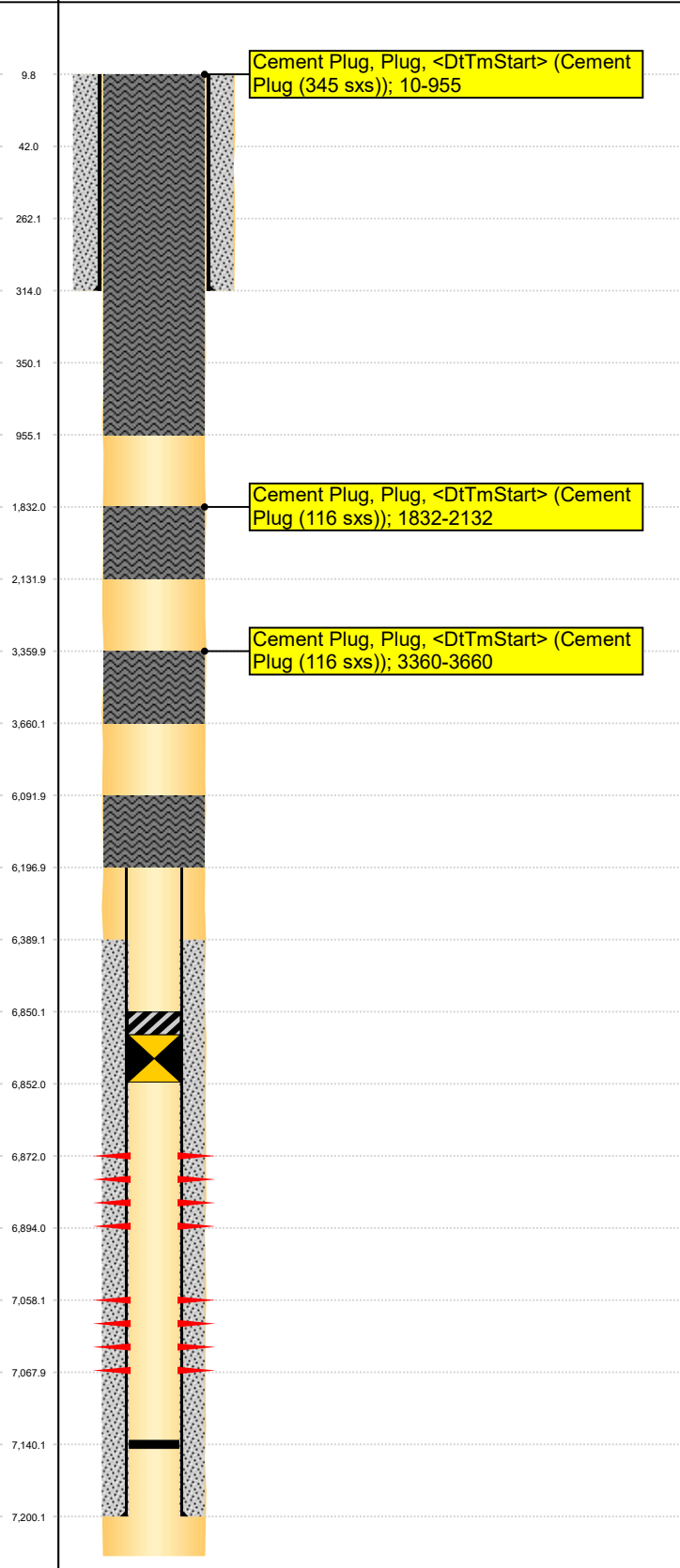
# Proposed PA WBD - Vertical

Well Name: Law 1

Original Hole

MD  
(ftKB  
)

Vertical schematic (proposed)



Well Header				
Surface UWI 0512312001	Business Unit Rockies	Gov Auth Dist	Prod Tree Loc	
Orig. KB to Gnd (ft) 10.00	Original Spud Date 9/11/1984	Abandon Date	Well Sub-Status DA	High... N
Comment				

Geologic Horizons	
Formation Name	Final Top MD (ftKB)

Wellbore Sections			
Section Des	Hole Size (in)	Top Depth (ftKB)	Btm Depth (ftKB)
Surface	12 1/4	10.0	314.0
Production	7 7/8	314.0	7,680.0

Casing Strings						
Csg Des	Run Date	OD (in)	Wt/Len (lb/ft)	Grade	Top Depth (MD) (ftKB)	Set Depth (MD) (ftKB)
Surface	9/11/1984	8 5/8	24.00		10	314
Production Casing	9/19/1984	4 1/2	11.60		10	7200

Cement			
Des	Start Date	Top (ftKB)	Btm (ftKB)
Surface Casing Cement	9/11/1984	10.0	314.0
Production Casing Cement (250 sxs)	9/19/1984	6,389.0	7,200.0
Surface Plug (10 sxs)	11/10/1992	10.0	42.0
Cement Plug (35 sxs)	11/10/1992	262.0	350.0
Cement Plug (40 sxs)	11/10/1992	6,092.0	6,197.0

Zones		
Niobrara, Original Hole		
Zone Name	Top Depth (ftKB)	Bottom Depth (ftKB)
Niobrara	6,872.0	6,894.0

Zone Statuses					
Zone Name	Status Date	Status	Fluid Type	Job	Prod Method

Codell, Original Hole		
Zone Name	Top Depth (ftKB)	Bottom Depth (ftKB)
Codell	7,058.0	7,068.0

Zone Statuses					
Zone Name	Status Date	Status	Fluid Type	Job	Prod Method

Stim/Frac Summary	
Min Top Depth (ftKB)	Max Btm Depth (ftKB)

Perforations		
Date	Top Depth (ftKB)	Bottom Depth (ftKB)
9/30/1984 00:00	6,872.0	6,894.0
9/30/1984 00:00	7,058.0	7,068.0

Other In Hole					
Run Date	Des	Make	OD (in)	Top (ftKB)	Btm (ftKB)
11/10/1992	Cast Iron Bridge Plug w/ 2 SX Cement		4	6,850.0	6,852.0

Logs			
Date	Type	Depth Top (MD) (ftKB)	Btm (ftKB)

Wellbore Plug Back Total Depths			
Date	Type	Com	PBTD (ftKB)
9/19/1984	Float Collar		7,140