



**PDC Energy, Inc.**  
**Fourth Quarter 2024 Groundwater Monitoring Summary**

October 9, 2024

Former Stephens 7-11, 12 Tank Battery  
NENE Section 7 T5N R66W  
Remediation # 11394

This groundwater monitoring summary has been prepared by Tasman, Inc. for the former Stephens 7-11, 12 tank battery.

### **Site History and Background**

On April 17, 2018, during decommissioning activities, a historic hydrocarbon release was discovered beneath the produced water vault. Following the discovery, mitigation efforts were initiated by SRC Energy and approximately 35 cubic yards of hydrocarbon impacted material were removed from location. During excavation activities, groundwater was encountered within the excavation at approximately 15 feet below ground surface (bgs). Between September 2017 and August 2018, 22 monitoring wells were installed to delineate dissolved-phase hydrocarbon impacts and establish point of compliance (POC). PDC took over operation of this location during the first quarter 2020. Per the approved Supplemental Form 27 (Document No. 402778883), inorganic parameters were removed from the quarterly sampling and analysis plan following the second quarter 2021. Per the approved Supplemental Form 27 (Document No. 403225463) monitoring wells BH18R, BH19, BH20R, BH21R, and BH22 were removed from sampling plan due to four consecutive quarters of organic compounds in compliance with the applicable regulatory standards. On August 30, 2023, source mass removal activities were re-initiated at the Stephens 7-11, 12 tank battery location to delineate and remove remaining hydrocarbon impacted material. Monitoring wells BH03 – BH12, BH14, BH15R, and BH16 were destroyed during supplemental source mass removal activities. Between August 30, and September 14, 2023, approximately 2,490 cubic yards of impacted soil was removed from the site for disposal. Between April 9, 2024, and April 19, 2024, 13 monitoring wells (BH23 – BH35) were installed to confirm the absence of dissolved-phase hydrocarbon impacts and establish POC within and surrounding the former excavation extent. Monitoring wells BH05 and BH07 were destroyed during excavation activities. Per the COA issued in the approved Supplemental Form 27 (Document No. 403555133), monitoring well BH21R was added back to the monitoring well network during the second quarter 2024 to establish POC south of the former excavation extent. In addition, Per the approved Supplemental Form 27s (Document Nos. 403807312 and 403879093) monitoring wells BH01, BH02, BH13, and BH17 were removed from sampling plan due to previous shallow installation depth, dry conditions on site, and the new monitoring well network satisfying sufficient POC.

## Groundwater Monitoring Activities

On October 1, 2024, groundwater monitoring was conducted at all 14 monitoring well locations (BH21R, BH23 – BH35). Fourteen groundwater samples were submitted to Summit Scientific Laboratory (Summit) for analysis of benzene, toluene, ethylbenzene, total xylenes (BTEX), naphthalene, 1,2,4-trimethylbenzene (TMB), and 1,3,5-TMB by EPA Method 8260B, chloride and sulfate anions by EPA Method 300.0 and total dissolved solids (TDS) by Method SM 2540C.

Fourth quarter 2024 analytical results indicated that organic compound concentrations were in compliance with the applicable ECMC Table 915-1 regulatory standards in all 14 monitoring well locations. TDS, chloride, and sulfate anion concentrations were in compliance with the applicable regulatory standards or within 1.25x the background concentrations of the cross-gradient monitoring wells (BH29, BH31, and BH35) in all 14 monitoring well locations. Sample locations and corresponding analytical results are illustrated on Figures 1 and 2. Groundwater elevation data is illustrated on Figure 3. Analytical results are summarized in Tables 1 and 2. The laboratory report is attached to the Supplemental Form 27.

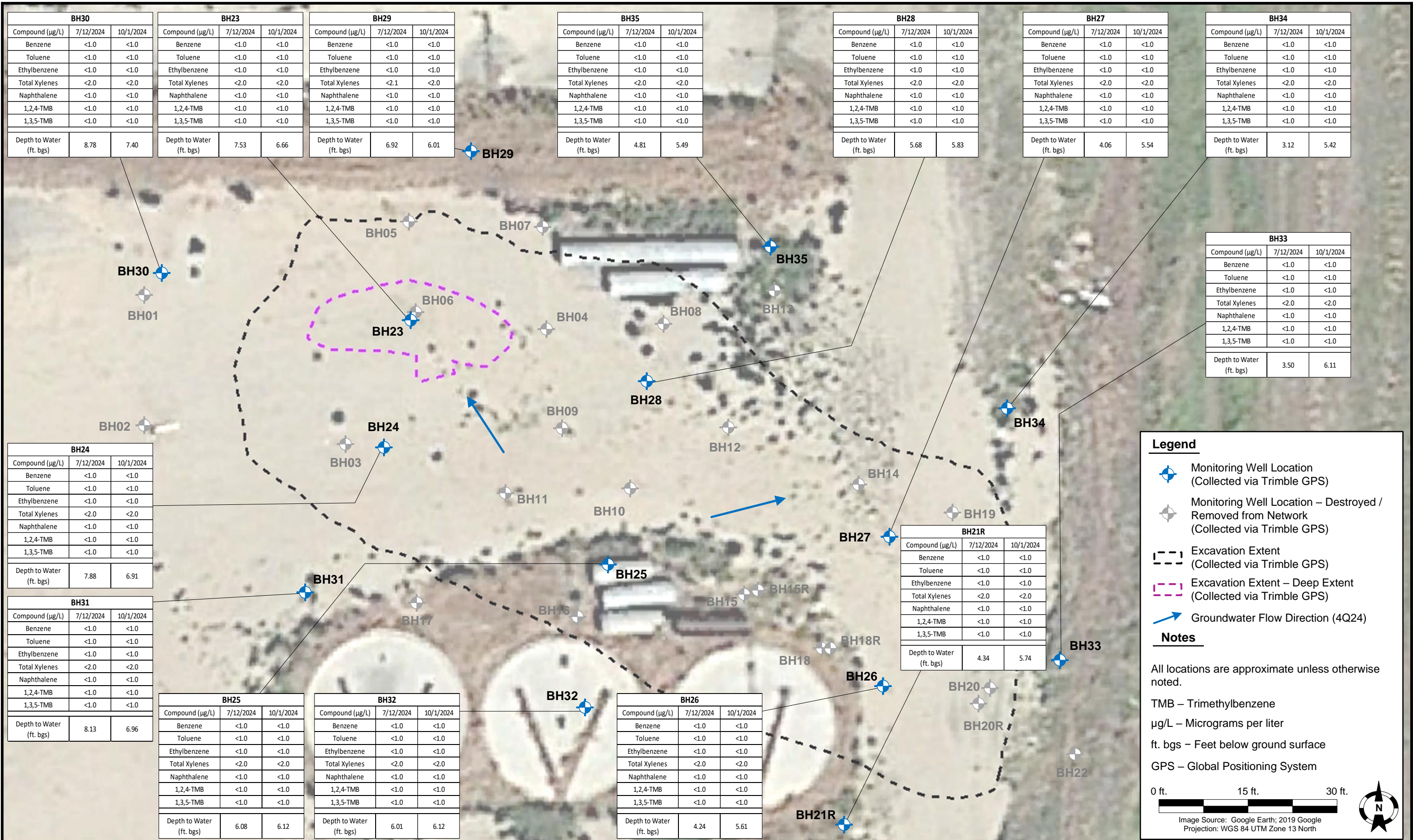
## Historic Remediation Activities and Path Forward

Enhanced fluid recovery (EFR) and air sparge (AS) were initiated during the fourth quarter 2018 and continued as the selected remediation strategy through the first quarter 2020. Based on the evaluation of soil boring logs and historic groundwater data, EFR/AS activities were re-initiated in the second quarter 2020 following PDC's acquisition of this location and continued through the fourth quarter 2022. Based on analytical results collected during the third and fourth quarters of 2022, monitored natural attenuation (MNA) was initiated as the selected remediation strategy for this location beginning in the first quarter 2023 through the second quarter 2023. Following September 2023 source mass removal activities, MNA will remain the selected remediation strategy for the first quarter 2025.

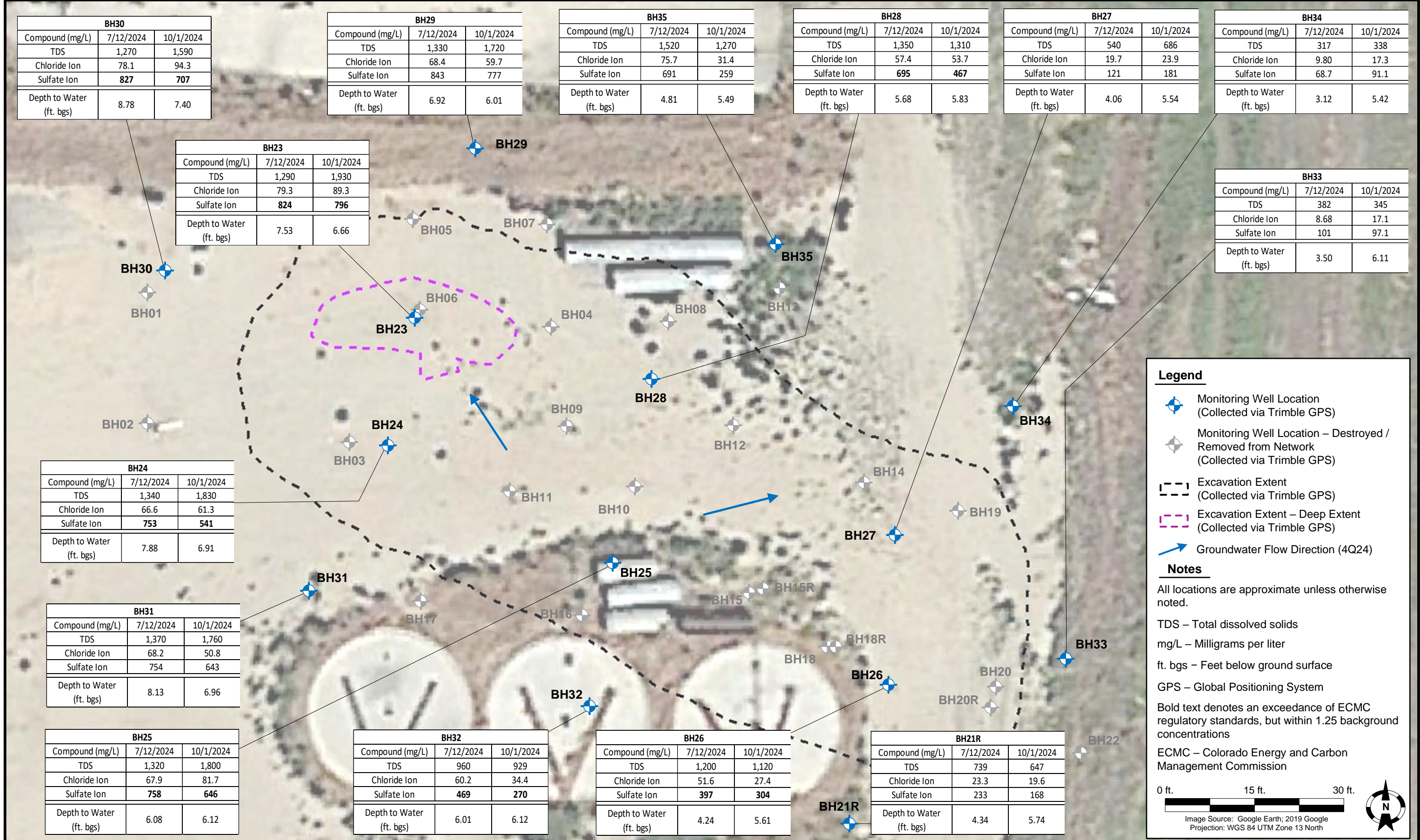
Following the fourth quarter 2024 groundwater monitoring event, monitoring well BH30 was abandoned due to developer work activities and land access agreements. A monitoring well will be temporarily re-installed via hand auger in the vicinity of BH30 during the first quarter 2025 groundwater monitoring event.

A supplemental site investigation will be conducted to assess Table 915-1 compliance on site. The proposed soil boring locations are illustrated on Figure 4.

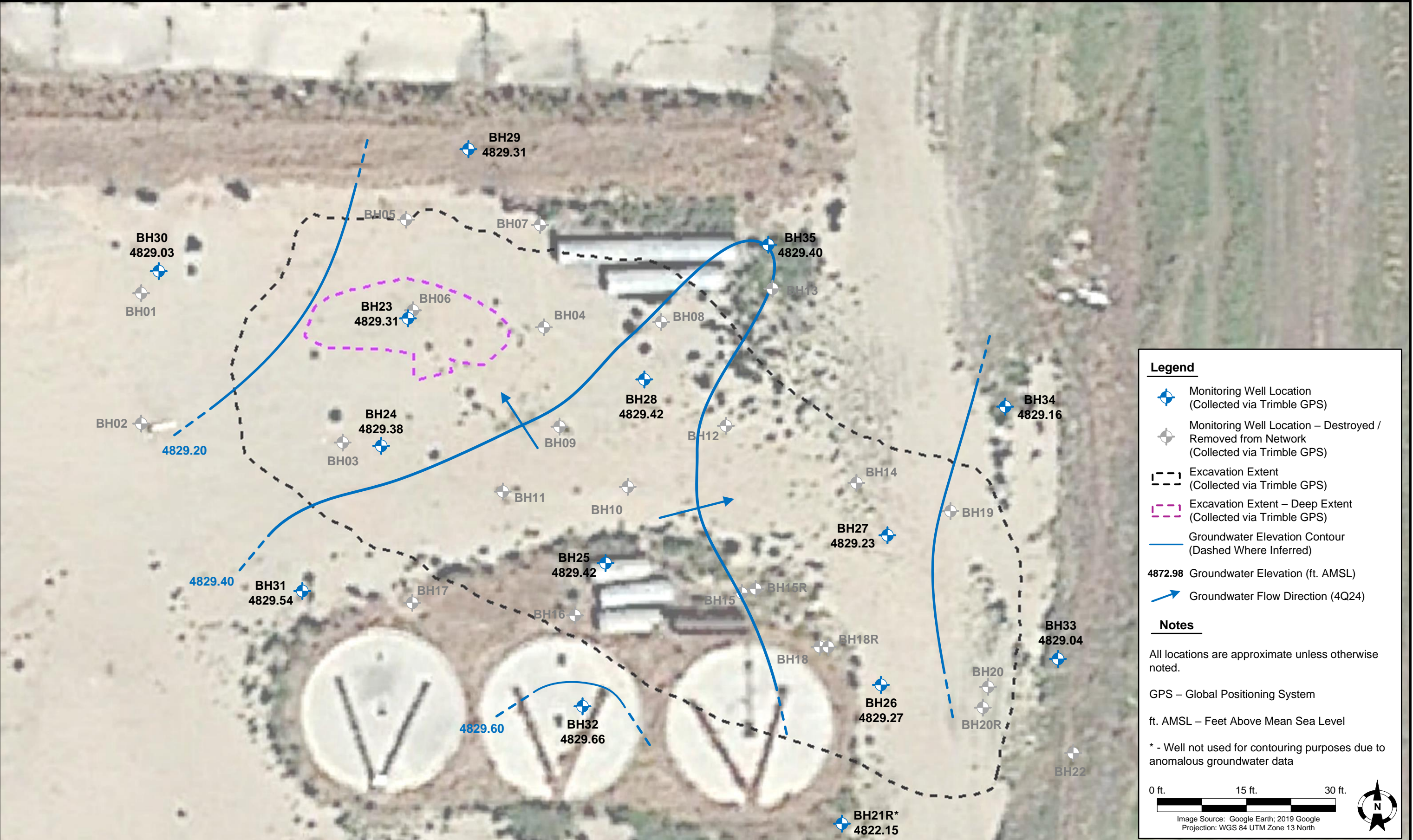
First quarter 2025 groundwater sampling will be conducted during January 2025.











DATE:	October 03, 2024
DESIGNED BY:	C. Hamlin
DRAWN BY:	J. Woffinden



**Tasman, Inc.**  
6855 W. 119<sup>th</sup> Ave  
Broomfield, CO 80020


**PDC Energy, Inc. – 69175 – DJ Basin**  
**Former Stephens 7-11, 12 Tank Battery**  
NENE, Section 7, Township 5 North, Range 68 West  
Weld County, Colorado

**GROUNDWATER  
ELEVATION CONTOUR  
MAP (10/01/2024)**

**FIGURE  
3**





DATE: October 10, 2023	 <b>Tasman, Inc.</b> 6855 W. 119 <sup>th</sup> Ave Broomfield, CO 80020	<b>PDC Energy, Inc. – DJ Basin</b> <b>Former Stephens 7-11, 12 Tank Battery</b> NENE, Section 7, Township 5 North, Range 66 West Weld County, Colorado	<b>PROPOSED SOIL BORING LOCATION MAP</b>	<b>FIGURE 4</b>
DESIGNED BY: C. Hamlin				
DRAWN BY: J. Marcus				



**TABLE 1**  
**FORMER STEPHENS 7-11, 12 TANK BATTERY**  
**GROUNDWATER ANALYTICAL RESULTS SUMMARY TABLE**  
**ORGANIC COMPOUNDS**

Sample ID	Date Sampled	Benzene (µg/L)	Toluene (µg/L)	Ethylbenzene (µg/L)	Total Xylenes (µg/L)	Naphthalene (µg/L)	1,2,4-TMB (µg/L)	1,3,5-TMB (µg/L)	Depth to Water <sup>(2)</sup> (ft.)	Groundwater Elevation (ft. AMSL)
ECMC Table 915-1 Groundwater Standard (µg/L) <sup>(1)</sup>		5	560	700	1,400	140	67	67	-	-
BH01	3/9/2021	<1.0	<1.0	<1.0	<2.0	<1.0	<1.0	<1.0	10.37	4818.89
BH01	6/9/2021	<1.0	<1.0	<1.0	<2.0	<1.0	<1.0	<1.0	10.13	4819.13
BH01	9/7/2021	<1.0	<1.0	<1.0	<2.0	<1.0	<1.0	<1.0	7.48	4821.78
BH01	12/30/2021	<1.0	<1.0	<1.0	<2.0	<1.0	<1.0	<1.0	9.23	4820.03
BH01	3/28/2022	<1.0	<1.0	<1.0	<2.0	<1.0	<1.0	<1.0	11.03	4818.23
BH01	6/3/2022	<1.0	<1.0	<1.0	<2.0	<1.0	<1.0	<1.0	9.89	4819.37
BH01	9/27/2022	<1.0	<1.0	<1.0	<2.0	<1.0	<1.0	<1.0	8.56	4820.70
BH01	12/6/2022	<1.0	<1.0	<1.0	<2.0	<1.0	<1.0	<1.0	10.05	4819.21
BH01	3/17/2023	<1.0	<1.0	<1.0	<2.0	<1.0	<1.0	<1.0	10.85	4818.41
BH01	6/5/2023	<1.0	<1.0	<1.0	<2.0	<1.0	<1.0	<1.0	10.22	4819.04
BH01	Monitoring Well Removed From Network									
BH02	3/9/2021	Not Sampled - Dry							Dry	Dry
BH02	6/9/2021	Not Sampled - Dry							Dry	Dry
BH02	9/7/2021	<1.0	<1.0	<1.0	<2.0	<1.0	<1.0	<1.0	7.10	4821.82
BH02	12/30/2021	Not Sampled - Dry							Dry	Dry
BH02	3/28/2022	Not Sampled - Dry							Dry	Dry
BH02	6/3/2022	Not Sampled - Dry							Dry	Dry
BH02	9/27/2022	<1.0	<1.0	<1.0	<2.0	<1.0	<1.0	<1.0	8.21	4820.71
BH02	12/6/2022	Not Sampled - Dry							Dry	Dry
BH02	3/17/2023	Not Sampled - Dry							Dry	Dry
BH02	6/5/2023	Not Sampled - Dry							Dry	Dry
BH02	Monitoring Well Removed From Network									
BH03	12/6/2022	Not Sampled - Dry							Dry	Dry
BH03	6/9/2021	Not Sampled - Dry							Dry	Dry
BH03	9/7/2021	<1.0	<1.0	<1.0	<2.0	<1.0	<1.0	<1.0	6.13	4822.35
BH03	12/30/2021	Not Sampled - Dry							Dry	Dry
BH03	3/28/2022	Not Sampled - Dry							Dry	Dry
BH03	6/3/2022	Not Sampled - Dry							Dry	Dry
BH03	9/7/2021	<1.0	<1.0	<1.0	<2.0	<1.0	<1.0	<1.0	7.46	4821.02
BH03	12/6/2022	Not Sampled - Dry							Dry	Dry
BH03	3/17/2023	Not Sampled - Dry							Dry	Dry
BH03	6/5/2023	Not Sampled - Dry							Dry	Dry
BH03	Monitoring Well Destroyed During Supplemental Source Mass Removal Activities									
BH04	3/9/2021	Not Sampled - Dry							Dry	Dry
BH04	6/9/2021	Not Sampled - Dry							Dry	Dry
BH04	9/7/2021	<1.0	<1.0	<1.0	<2.0	<1.0	<1.0	<1.0	5.21	4822.88
BH04	12/30/2021	Not Sampled - Dry							Dry	Dry
BH04	3/28/2022	Not Sampled - Dry							Dry	Dry
BH04	6/3/2022	Not Sampled - Dry							Dry	Dry
BH04	9/27/2022	<1.0	<1.0	<1.0	<2.0	<1.0	<1.0	<1.0	6.93	4821.16
BH04	12/6/2022	Not Sampled - Dry							Dry	Dry
BH04	3/17/2023	Not Sampled - Dry							Dry	Dry
BH04	6/5/2023	Not Sampled - Dry							Dry	Dry
BH04	Monitoring Well Destroyed During Supplemental Source Mass Removal Activities									
BH05	3/9/2021	<1.0	<1.0	<1.0	<2.0	<1.0	<1.0	<1.0	10.98	4818.57
BH05	6/9/2021	<1.0	<1.0	<1.0	<2.0	<1.0	<1.0	<1.0	10.69	4818.86
BH05	9/7/2021	<1.0	<1.0	<1.0	<2.0	<1.0	<1.0	<1.0	7.12	4822.43
BH05	12/30/2021	<1.0	<1.0	<1.0	<2.0	<1.0	<1.0	<1.0	9.87	4819.68
BH05	3/28/2022	<1.0	<1.0	<1.0	<2.0	<1.0	<1.0	<1.0	10.68	4818.87
BH05	6/3/2022	<1.0	<1.0	<1.0	<2.0	<1.0	<1.0	<1.0	10.22	4819.33





**TABLE 1**  
**FORMER STEPHENS 7-11, 12 TANK BATTERY**  
**GROUNDWATER ANALYTICAL RESULTS SUMMARY TABLE**  
**ORGANIC COMPOUNDS**

Sample ID	Date Sampled	Benzene (µg/L)	Toluene (µg/L)	Ethylbenzene (µg/L)	Total Xylenes (µg/L)	Naphthalene (µg/L)	1,2,4-TMB (µg/L)	1,3,5-TMB (µg/L)	Depth to Water <sup>(2)</sup> (ft.)	Groundwater Elevation (ft. AMSL)
ECMC Table 915-1 Groundwater Standard (µg/L) <sup>(1)</sup>		5	560	700	1,400	140	67	67	-	-
BH10	6/9/2021	Not Sampled - Dry							Dry	Dry
BH10	9/7/2021	<1.0	<1.0	<1.0	<2.0	<1.0	<1.0	<1.0	4.63	4823.28
BH10	12/30/2021	<1.0	<1.0	<1.0	<2.0	<1.0	<1.0	<1.0	9.41	4818.50
BH10	3/28/2022	Not Sampled - Insufficient Water Column							9.57	4818.34
BH10	6/3/2022	<1.0	<1.0	<1.0	<2.0	<1.0	<1.0	<1.0	8.58	4819.33
BH10	9/27/2022	<1.0	<1.0	<1.0	<2.0	<1.0	<1.0	<1.0	6.62	4821.29
BH10	12/6/2022	<1.0	<1.0	<1.0	<2.0	<1.0	<1.0	<1.0	9.17	4818.74
BH10	3/17/2023	Not Sampled - Dry							Dry	Dry
BH10	6/5/2023	<1.0	<1.0	<1.0	<2.0	<1.0	<1.0	<1.0	9.41	4818.50
BH10	Monitoring Well Destroyed During Supplemental Source Mass Removal Activities									
BH11	3/9/2021	Not Sampled - Dry							Dry	Dry
BH11	6/9/2021	Not Sampled - Dry							Dry	Dry
BH11	9/7/2021	<1.0	<1.0	<1.0	<2.0	<1.0	<1.0	<1.0	5.23	4822.93
BH11	12/30/2021	Not Sampled - Dry							Dry	Dry
BH11	3/28/2022	Not Sampled - Dry							Dry	Dry
BH11	6/3/2022	Not Sampled - Insufficient Water Column							8.84	4819.32
BH11	9/27/2022	<1.0	<1.0	<1.0	<2.0	<1.0	<1.0	<1.0	6.97	4821.19
BH11	12/6/2022	Not Sampled - Dry							Dry	Dry
BH11	3/17/2023	Not Sampled - Dry							Dry	Dry
BH11	6/5/2023	Not Sampled - Dry							Dry	Dry
BH11	Monitoring Well Destroyed During Supplemental Source Mass Removal Activities									
BH12	3/9/2021	Not Sampled - Dry							Dry	Dry
BH12	6/9/2021	Not Sampled - Dry							Dry	Dry
BH12	9/7/2021	<1.0	<1.0	<1.0	<2.0	<1.0	<1.0	<1.0	4.08	4823.42
BH12	12/30/2021	Not Sampled - Dry							Dry	Dry
BH12	3/28/2022	Not Sampled - Dry							Dry	Dry
BH12	6/3/2022	Not Sampled - Dry							Dry	Dry
BH12	9/7/2021	<1.0	<1.0	<1.0	<2.0	<1.0	<1.0	<1.0	6.36	4821.14
BH12	12/6/2022	Not Sampled - Dry							Dry	Dry
BH12	3/17/2023	Not Sampled - Dry							Dry	Dry
BH12	6/5/2023	Not Sampled - Dry							Dry	Dry
BH12	Monitoring Well Destroyed During Supplemental Source Mass Removal Activities									
BH13	3/9/2021	<1.0	<1.0	<1.0	<2.0	<1.0	<1.0	<1.0	9.69	4817.84
BH13	6/9/2021	<1.0	<1.0	<1.0	<2.0	<1.0	<1.0	<1.0	9.46	4818.07
BH13	9/7/2021	<1.0	<1.0	<1.0	<2.0	<1.0	<1.0	<1.0	4.03	4823.50
BH13	12/30/2021	<1.0	<1.0	<1.0	<2.0	<1.0	<1.0	<1.0	8.60	4818.93
BH13	3/28/2022	<1.0	<1.0	<1.0	<2.0	<1.0	<1.0	<1.0	9.34	4818.19
BH13	6/3/2022	<1.0	<1.0	<1.0	<2.0	<1.0	<1.0	<1.0	8.24	4819.29
BH13	6/3/2022	<1.0	<1.0	<1.0	<2.0	<1.0	<1.0	<1.0	6.28	4821.25
BH13	12/6/2022	<1.0	<1.0	<1.0	<2.0	<1.0	<1.0	<1.0	8.91	4818.62
BH13	3/17/2023	Not Sampled - Dry							Dry	Dry
BH13	6/5/2023	<1.0	<1.0	<1.0	<2.0	<1.0	<1.0	<1.0	9.20	4818.33
BH13	Monitoring Well Removed From Network									
BH14	3/9/2021	<1.0	<1.0	<1.0	<2.0	<1.0	<1.0	<1.0	9.85	4817.57
BH14	6/9/2021	<1.0	<1.0	<1.0	<2.0	<1.0	<1.0	<1.0	9.72	4817.70
BH14	9/7/2021	<1.0	<1.0	<1.0	<2.0	<1.0	<1.0	<1.0	3.45	4823.97
BH14	12/30/2021	<1.0	<1.0	<1.0	<2.0	<1.0	<1.0	<1.0	8.69	4818.73
BH14	3/28/2022	<1.0	<1.0	<1.0	<2.0	<1.0	<1.0	<1.0	9.50	4817.92
BH14	6/3/2022	<1.0	<1.0	<1.0	<2.0	<1.0	<1.0	<1.0	8.09	4819.33
BH14	9/27/2022	<1.0	<1.0	<1.0	<2.0	<1.0	<1.0	<1.0	6.22	4821.20





**TABLE 1**  
**FORMER STEPHENS 7-11, 12 TANK BATTERY**  
**GROUNDWATER ANALYTICAL RESULTS SUMMARY TABLE**  
**ORGANIC COMPOUNDS**

Sample ID	Date Sampled	Benzene (µg/L)	Toluene (µg/L)	Ethylbenzene (µg/L)	Total Xylenes (µg/L)	Naphthalene (µg/L)	1,2,4-TMB (µg/L)	1,3,5-TMB (µg/L)	Depth to Water <sup>(2)</sup> (ft.)	Groundwater Elevation (ft. AMSL)
ECMC Table 915-1 Groundwater Standard (µg/L) <sup>(1)</sup>		5	560	700	1,400	140	67	67	-	-
BH19	6/3/2022	Not Sampled - Dry							Dry	Dry
BH19	9/27/2022	<1.0	<1.0	<1.0	<2.0	<1.0	<1.0	<1.0	6.58	4821.06
BH19	Monitoring Well Removed From Network									
BH20R	3/9/2021	<1.0	<1.0	<1.0	<2.0	<1.0	<1.0	<1.0	10.45	4817.03
BH20R	6/9/2021	<1.0	<1.0	<1.0	<2.0	<1.0	<1.0	<1.0	10.51	4816.97
BH20R	9/7/2021	<1.0	<1.0	<1.0	<2.0	<1.0	<1.0	<1.0	3.04	4824.44
BH20R	12/30/2021	<1.0	<1.0	<1.0	<2.0	<1.0	<1.0	<1.0	9.20	4818.28
BH20R	3/28/2022	<1.0	<1.0	<1.0	<2.0	<1.0	<1.0	<1.0	10.09	4817.39
BH20R	6/3/2022	<1.0	<1.0	<1.0	<2.0	<1.0	<1.0	<1.0	8.23	4819.25
BH20R	9/27/2022	<1.0	<1.0	<1.0	<2.0	<1.0	<1.0	<1.0	7.35	4820.13
BH20R	Monitoring Well Removed From Network									
BH21R	3/9/2021	<1.0	<1.0	<1.0	<2.0	<1.0	<1.0	<1.0	10.59	4817.30
BH21R	6/9/2021	<1.0	<1.0	<1.0	<2.0	<1.0	<1.0	<1.0	10.58	4817.31
BH21R	9/7/2021	<1.0	<1.0	<1.0	<2.0	<1.0	<1.0	<1.0	3.97	4823.92
BH21R	12/30/2021	<1.0	<1.0	<1.0	<2.0	<1.0	<1.0	<1.0	9.33	4818.56
BH21R	3/28/2022	<1.0	<1.0	<1.0	<2.0	<1.0	<1.0	<1.0	10.19	4817.70
BH21R	6/3/2022	<1.0	<1.0	<1.0	<2.0	<1.0	<1.0	<1.0	8.58	4819.31
BH21R	9/27/2022	<1.0	<1.0	<1.0	<2.0	<1.0	<1.0	<1.0	6.85	4821.04
BH21R	4/30/2024	<1.0	<1.0	<1.0	<2.0	<1.0	<1.0	<1.0	NM	NM
BH21R	7/12/2024	<1.0	<1.0	<1.0	<2.0	<1.0	<1.0	<1.0	4.34	4823.55
BH21R	10/1/2024	<1.0	<1.0	<1.0	<2.0	<1.0	<1.0	<1.0	5.74	4822.15
BH22	3/9/2021	Not Sampled - Dry							Dry	Dry
BH22	6/9/2021	Not Sampled - Dry							Dry	Dry
BH22	9/7/2021	<1.0	<1.0	<1.0	<2.0	<1.0	<1.0	<1.0	0.69	4827.84
BH22	12/30/2021	Not Sampled - Dry							Dry	Dry
BH22	3/28/2022	Not Sampled - Dry							Dry	Dry
BH22	6/3/2022	<1.0	<1.0	<1.0	<2.0	<1.0	<1.0	<1.0	6.24	4822.29
BH22	9/27/2022	Not Sampled - Dry							Dry	Dry
BH22	Monitoring Well Removed From Network									
BH23	4/23/2024	<1.0	<1.0	<1.0	<2.0	<1.0	<1.0	<1.0	10.27	4825.70
BH23	7/12/2024	<1.0	<1.0	<1.0	<2.0	<1.0	<1.0	<1.0	7.53	4828.44
BH23	10/1/2024	<1.0	<1.0	<1.0	<2.0	<1.0	<1.0	<1.0	6.66	4829.31
BH24	4/23/2024	<1.0	<1.0	<1.0	<2.0	<1.0	<1.0	<1.0	10.54	4825.75
BH24	7/12/2024	<1.0	<1.0	<1.0	<2.0	<1.0	<1.0	<1.0	7.88	4828.41
BH24	10/1/2024	<1.0	<1.0	<1.0	<2.0	<1.0	<1.0	<1.0	6.91	4829.38
BH25	4/23/2024	<1.0	<1.0	<1.0	<2.0	<1.0	<1.0	<1.0	10.41	4825.13
BH25	7/12/2024	<1.0	<1.0	<1.0	<2.0	<1.0	<1.0	<1.0	6.08	4829.46
BH25	10/1/2024	<1.0	<1.0	<1.0	<2.0	<1.0	<1.0	<1.0	6.12	4829.42
BH26	4/23/2024	<1.0	<1.0	<1.0	<2.0	<1.0	<1.0	<1.0	10.25	4824.63
BH26	7/12/2024	<1.0	<1.0	<1.0	<2.0	<1.0	<1.0	<1.0	4.24	4830.64
BH26	10/1/2024	<1.0	<1.0	<1.0	<2.0	<1.0	<1.0	<1.0	5.61	4829.27
BH27	4/23/2024	<1.0	<1.0	<1.0	<2.0	<1.0	<1.0	<1.0	10.06	4824.71
BH27	7/12/2024	<1.0	<1.0	<1.0	<2.0	<1.0	<1.0	<1.0	4.06	4830.71
BH27	10/1/2024	<1.0	<1.0	<1.0	<2.0	<1.0	<1.0	<1.0	5.54	4829.23
BH28	4/23/2024	<1.0	<1.0	<1.0	<2.0	<1.0	<1.0	<1.0	9.98	4825.27
BH28	7/12/2024	<1.0	<1.0	<1.0	<2.0	<1.0	<1.0	<1.0	5.68	4829.57
BH28	10/1/2024	<1.0	<1.0	<1.0	<2.0	<1.0	<1.0	<1.0	5.83	4829.42

**TABLE 1**  
**FORMER STEPHENS 7-11, 12 TANK BATTERY**  
**GROUNDWATER ANALYTICAL RESULTS SUMMARY TABLE**  
**ORGANIC COMPOUNDS**

Sample ID	Date Sampled	Benzene (µg/L)	Toluene (µg/L)	Ethylbenzene (µg/L)	Total Xylenes (µg/L)	Naphthalene (µg/L)	1,2,4-TMB (µg/L)	1,3,5-TMB (µg/L)	Depth to Water <sup>(2)</sup> (ft.)	Groundwater Elevation (ft. AMSL)
ECMC Table 915-1 Groundwater Standard (µg/L) <sup>(1)</sup>		5	560	700	1,400	140	67	67	-	-
BH29	4/23/2024	<1.0	<1.0	<1.0	<2.0	<1.0	<1.0	<1.0	9.59	4825.73
BH29	7/12/2024	<1.0	<1.0	<1.0	<2.0	<1.0	<1.0	<1.0	6.92	4828.40
BH29	10/1/2024	<1.0	<1.0	<1.0	<2.0	<1.0	<1.0	<1.0	6.01	4829.31
BH30	4/23/2024	<1.0	<1.0	<1.0	<2.0	<1.0	<1.0	<1.0	10.29	4826.14
BH30	7/12/2024	<1.0	<1.0	<1.0	<2.0	<1.0	<1.0	<1.0	8.78	4827.65
BH30	10/1/2024	<1.0	<1.0	<1.0	<2.0	<1.0	<1.0	<1.0	7.40	4829.03
BH31	4/23/2024	<1.0	<1.0	<1.0	<2.0	<1.0	<1.0	<1.0	10.64	4825.86
BH31	7/12/2024	<1.0	<1.0	<1.0	<2.0	<1.0	<1.0	<1.0	8.13	4828.37
BH31	10/1/2024	<1.0	<1.0	<1.0	<2.0	<1.0	<1.0	<1.0	6.96	4829.54
BH32	4/23/2024	<1.0	<1.0	<1.0	<2.0	<1.0	<1.0	<1.0	10.57	4825.21
BH32	7/12/2024	<1.0	<1.0	<1.0	<2.0	<1.0	<1.0	<1.0	6.01	4829.77
BH32	10/1/2024	<1.0	<1.0	<1.0	<2.0	<1.0	<1.0	<1.0	6.12	4829.66
BH33	4/23/2024	<1.0	<1.0	<1.0	<2.0	<1.0	<1.0	<1.0	10.88	4824.27
BH33	7/12/2024	<1.0	<1.0	<1.0	<2.0	<1.0	<1.0	<1.0	3.50	4831.65
BH33	10/1/2024	<1.0	<1.0	<1.0	<2.0	<1.0	<1.0	<1.0	6.11	4829.04
BH34	4/23/2024	<1.0	<1.0	<1.0	<2.0	<1.0	<1.0	<1.0	9.96	4824.62
BH34	7/12/2024	<1.0	<1.0	<1.0	<2.0	<1.0	<1.0	<1.0	3.12	4831.46
BH34	10/1/2024	<1.0	<1.0	<1.0	<2.0	<1.0	<1.0	<1.0	5.42	4829.16
BH35	4/23/2024	<1.0	<1.0	<1.0	<2.0	<1.0	<1.0	<1.0	9.73	4825.16
BH35	7/12/2024	<1.0	<1.0	<1.0	<2.0	<1.0	<1.0	<1.0	4.81	4830.08
BH35	10/1/2024	<1.0	<1.0	<1.0	<2.0	<1.0	<1.0	<1.0	5.49	4829.40

**Notes:**

1. Groundwater standards referenced from 2 CCR 404-1, Table 915-1, January 15, 2021.

2. Depth to water measurements were measured from ground surface for excavation samples. Monitoring well measurements were collected from top of casing and adjusted using survey data to reflect depth of water from ground surface.

\*Due to a clerical error, monitoring well BH21R was sampled on April 30, 2024.

TMB = Trimethylbenzene

ECMC = Colorado Energy and Carbon Management Commission

µg/L = Micrograms per liter

(<) = Analytical result is less than the indicated laboratory reporting limit.

ft. = Feet

AMSL = Above Mean Sea Level

**BOLD** = Analytical result is in exceedance of applicable standard.



**TABLE 2**  
**FORMER STEPHENS 7-11, 12 TANK BATTERY**  
**GROUNDWATER ANALYTICAL RESULTS SUMMARY TABLE**  
**INORGANIC PARAMETERS**

Sample ID	Date Sampled	TDS (mg/L)	Chloride Ion (mg/L)	Sulfate Ion (mg/L)	Depth to Water <sup>(2)</sup> (ft.)	Groundwater Elevation (ft. AMSL)
<b>ECMC Table 915-1 Groundwater Standard (mg/L) <sup>(1)</sup></b>		<b>&lt;1.25 x BCKG</b>	<b>250 or &lt;1.25 x BCKG</b>	<b>250 or &lt;1.25 x BCKG</b>	<b>-</b>	<b>-</b>
BH21R*	4/30/2024	940	47.5	342	NM	NM
BH21R	7/12/2024	739	23.3	233	4.34	4823.55
BH21R	10/1/2024	647	19.6	168	5.74	4822.15
BH23	4/23/2024	1,270	9.75	83.0	10.27	4825.70
BH23	7/12/2024	1,290	79.3	824	7.53	4828.44
BH23	10/1/2024	1,930	89.3	796	6.66	4829.31
BH24	4/23/2024	1,380	9.18	87.3	10.54	4825.75
BH24	7/12/2024	1,340	66.6	753	7.88	4828.41
BH24	10/1/2024	1,830	61.3	541	6.91	4829.38
BH25	4/23/2024	1,390	8.38	85.8	10.41	4825.13
BH25	7/12/2024	1,320	67.9	758	6.08	4829.46
BH25	10/1/2024	1,800	81.7	646	6.12	4829.42
BH26	4/23/2024	1,330	9.10	54.5	10.25	4824.63
BH26	7/12/2024	1,200	51.6	397	4.24	4830.64
BH26	10/1/2024	1,120	27.4	304	5.61	4829.27
BH27	4/23/2024	1,230	7.25	59.0	10.06	4824.71
BH27	7/12/2024	540	19.7	121	4.06	4830.71
BH27	10/1/2024	686	23.9	181	5.54	4829.23
BH28	4/23/2024	1,290	8.22	78.5	9.98	4825.27
BH28	7/12/2024	1,350	57.4	695	5.68	4829.57
BH28	10/1/2024	1,310	53.7	467	5.83	4829.42
BH29	4/23/2024	1,390	7.21	91.2	9.59	4825.73
BH29	7/12/2024	1,330	68.4	843	6.92	4828.40
BH29	10/1/2024	1,720	59.7	777	6.01	4829.31
BH30	4/23/2024	1,300	9.03	90.7	10.29	4826.14
BH30	7/12/2024	1,270	78.1	827	8.78	4827.65
BH30	10/1/2024	1,590	94.3	707	7.40	4829.03
BH31	4/23/2024	1,420	9.18	78.7	10.64	4825.86
BH31	7/12/2024	1,370	68.2	754	8.13	4828.37
BH31	10/1/2024	1,760	50.8	643	6.96	4829.54
BH32	4/23/2024	1,010	5.76	45.6	10.57	4825.21
BH32	7/12/2024	960	60.2	469	6.01	4829.77
BH32	10/1/2024	929	34.4	270	6.12	4829.66

**TABLE 2**  
**FORMER STEPHENS 7-11, 12 TANK BATTERY**  
**GROUNDWATER ANALYTICAL RESULTS SUMMARY TABLE**  
**INORGANIC PARAMETERS**

Sample ID	Date Sampled	TDS (mg/L)	Chloride Ion (mg/L)	Sulfate Ion (mg/L)	Depth to Water <sup>(2)</sup> (ft.)	Groundwater Elevation (ft. AMSL)
<b>ECMC Table 915-1 Groundwater Standard (mg/L) <sup>(1)</sup></b>		<b>&lt;1.25 x BCKG</b>	<b>250 or &lt;1.25 x BCKG</b>	<b>250 or &lt;1.25 x BCKG</b>	<b>-</b>	<b>-</b>
BH33	4/23/2024	871	3.62	40.8	10.88	4824.27
BH33	7/12/2024	382	8.68	101	3.50	4831.65
BH33	10/1/2024	345	17.1	97.1	6.11	4829.04
BH34	4/23/2024	774	3.22	28.9	9.96	4824.62
BH34	7/12/2024	317	9.80	68.7	3.12	4831.46
BH34	10/1/2024	338	17.3	91.1	5.42	4829.16
BH35	4/23/2024	1,580	9.77	99.5	9.73	4825.16
BH35	7/12/2024	1,520	75.7	691	4.81	4830.08
BH35	10/1/2024	1,270	31.4	259	5.49	4829.40

**Notes:**

1. Groundwater standards referenced from 2 CCR 404-1, Table 915-1, January 15, 2021.

2. Depth to water measurements were measured from ground surface for excavation samples. Monitoring well measurements were collected from top of casing and adjusted using survey data to reflect depth of water from ground surface.

\*Due to a clerical error, monitoring well BH21R was sampled on April 30, 2024.

TDS = Total dissolved solids

ECMC = Colorado Energy and Carbon Management Commission

BCKG = Background

mg/L = Milligrams per liter

(<) = Analytical result is less than the indicated laboratory reporting limit.

NM = Not measured

**BOLD** = Analytical result is in exceedance of applicable standard.

  = Historical up- / cross-gradient well location used for background concentration.

  = Up- / Cross-gradient well location used for background concentration.